



CELEBRATING
EDUCATIONAL
EXCELLENCE

1972 - 2022

MEASURE E

Citizens Oversight Committee Quarterly Meeting

October 24, 2022

Board of Education

Paul Bokota
Lauren Brooks
Ira Glasky, President
Sharon Wallin
Cyril Yu



AGENDA

Budget

State Funding

Schedule

Project Updates

- Series 2018B (Series 2)
- Series 2021C (Series 3)
- Augmented Funds to Accelerate Projects (AFAP)



BUDGET

PROGRAM BUDGET

MEASURE E

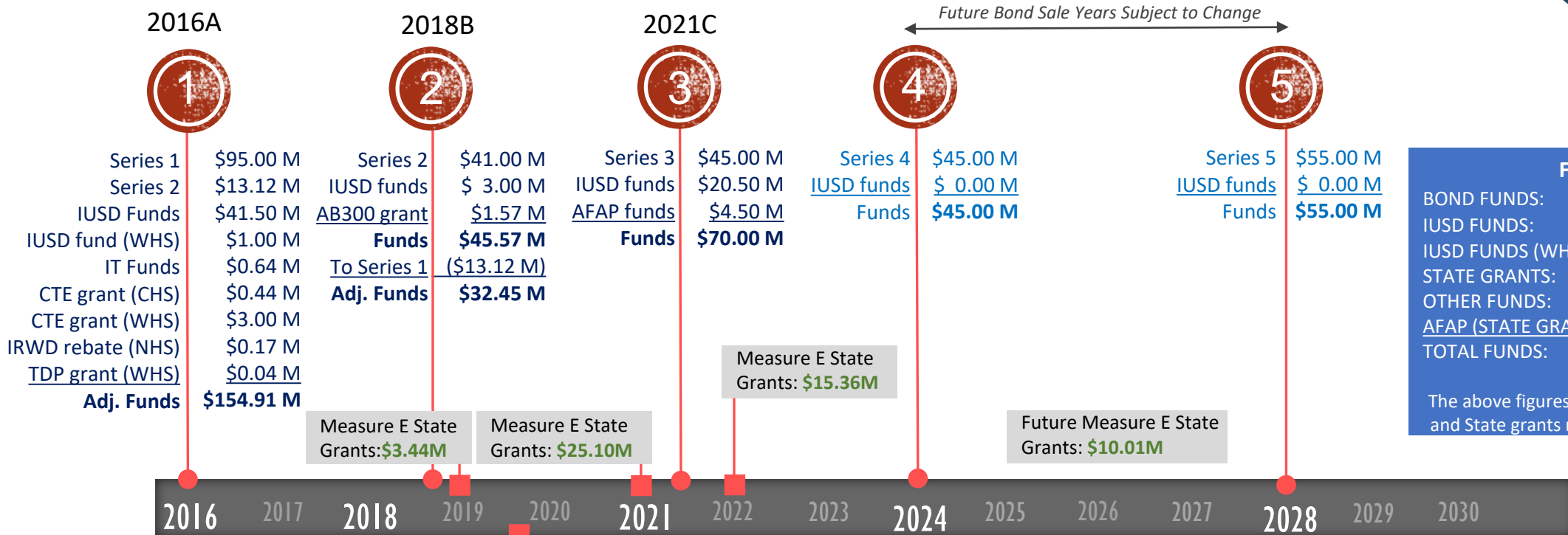
REVISED BOND SERIES

- Series 1 funds received October 26, 2016
- Series 2 funds received September 13, 2018
- Series 3 funds received April 7, 2021

<u>ORIGINAL</u>		<u>ISSUED/PROPOSED</u>	
2016 (Series 1)	\$ 95.0M	2016 (Series 1)	\$ 95.0M
2021 (Series 2)	\$ 51.9M	2018 (Series 2)	\$ 41.0M
2025 (Series 3)	\$ 49.4M	2021 (Series 3)	\$ 45.0M
2029 (Series 4)	\$ 54.5M	2024 (Series 4)	\$ 45.0M
<u>TOTAL</u>	<u>\$ 250.8M *</u>	<u>2028 (Series 5)</u>	<u>\$ 55.0M</u>
		<u>TOTAL</u>	<u>\$281.0M*</u>

*Maximum Bond Capacity is \$319.0M

MEASURE E FUNDING TIMELINE



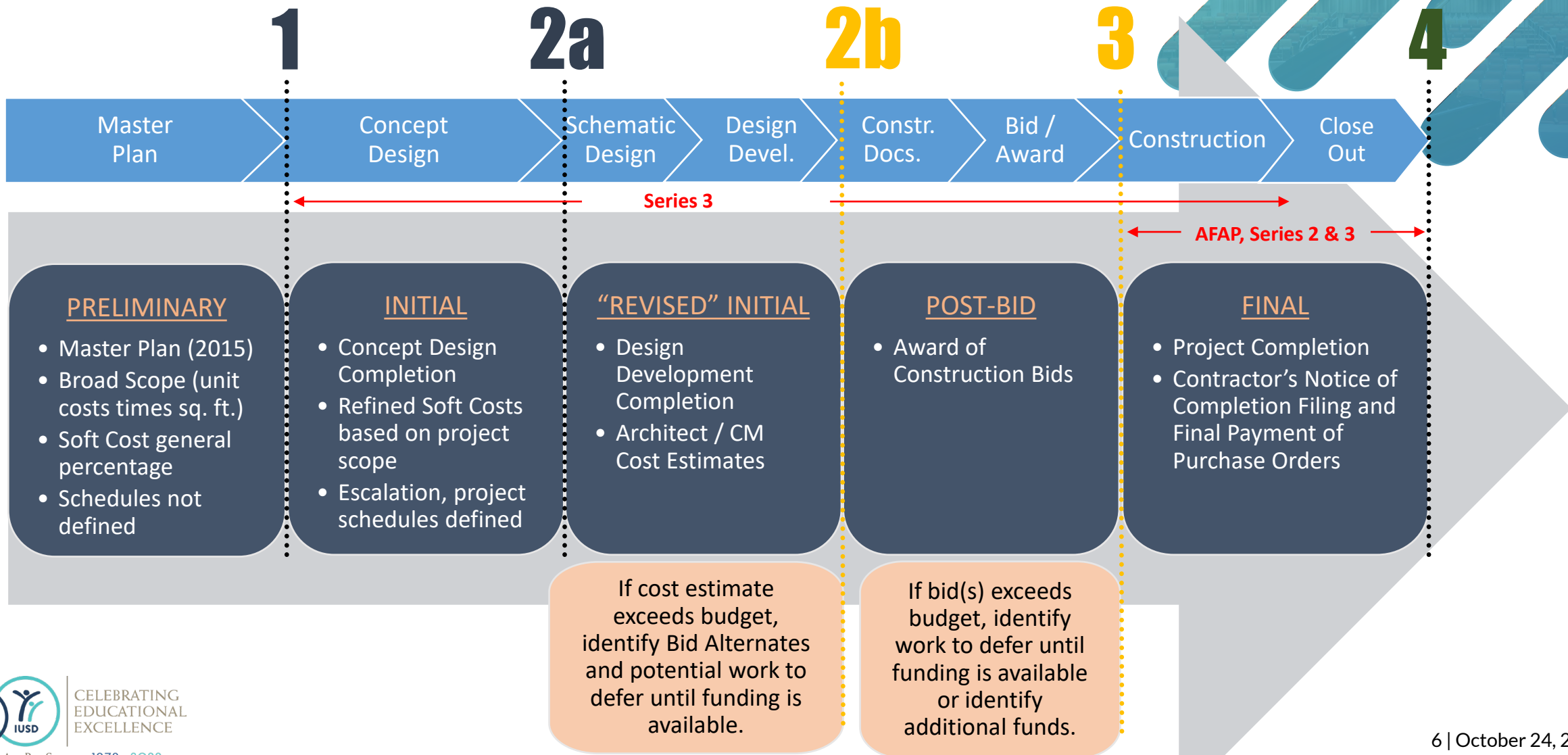
FUNDING	
BOND FUNDS:	\$ 281.0 M
IUSD FUNDS:	\$ 65.0 M
IUSD FUNDS (WHS):	\$ 1.0 M
STATE GRANTS:	\$ 5.0 M
OTHER FUNDS:	\$ 0.9 M
<u>AFAP (STATE GRANTS):</u>	<u>\$ 30.0 M</u>
TOTAL FUNDS:	\$ 382.9 M

The above figures exclude future State grant and State grants not assigned to Measure E.

AFAP \$30.0 M
To Series 3 (\$4.50 M)
Funds to AFAP Projects \$25.50 M
Augmented Funds to Accelerate Projects (AFAP)

MEASURE E

BUDGET VERSIONS



MEASURE E

UPCOMING BUDGETARY CHALLENGES

Projects Affected

- Irvine HS Performing Arts Center (Increment 2) – Bids in fall/winter 2022
- Culverdale ES, Greentree ES, and Santiago Hills ES Expansions – Bids in spring/summer 2023

Impacts

- Cost escalation on materials at a 35-year high (concrete, steel, lumber, aluminum, roofing)
- Limited material inventory (less warehoused materials)
- Supply chain issues (delayed material deliveries and longer lead times on orders)
- Reduction in construction workforce (industry wide)
- Difficulty in retaining professional services staff (architects and construction managers)

What are we doing?

- Monitoring the economy
- Developing bid alternates for upcoming projects
- Making budget adjustments, as necessary

MEASURE E

BUDGET SUMMARY

Series	Bond Sale Year	Funds Available								Total Funds Authorized	Project Expenditures or Budgeted	Funds Available / (Deficit)
		[A]	[B]	[C]	[D]	[E]	[F]	[G]	[H]	[I]	[J]	[K]
		Bonds	District			State Grants Received (Fund 35)	Other Grants / Rebates	Other Funds	Committed Funds to AFAP (Fund 35)	[Sum of A thru H]		[I-J]
Fund 01 (CFD 86-1)	Fund 25		Fund 40									
Series 1	2016	\$ 108,115,495	\$ 23,000,000	\$ 13,500,000	\$ 6,000,000	\$ 3,439,400	\$ 219,031	\$ 643,875	\$ -	\$ 154,917,801	\$ 151,498,946	\$ 3,418,855
Series 2	2018	\$ 27,884,505	\$ -	\$ -	\$ 3,000,000	\$ 1,565,006	\$ -	\$ -	\$ -	\$ 32,449,511	\$ 32,290,186	\$ 159,325
Series 3	2021	\$ 45,000,000	\$ -	\$ -	\$ 20,500,000	\$ -	\$ -	\$ -	\$ 4,500,000	\$ 70,000,000	\$ 71,563,206	\$ (1,563,206)
Series 4	2024	\$ 45,000,000	\$ -	\$ -	\$ -	\$ -	\$ -	\$ -	\$ -	\$ 45,000,000	\$ 38,600,000	\$ 6,400,000
Series 5	2028	\$ 55,000,000	\$ -	\$ -	\$ -	\$ -	\$ -	\$ -	\$ -	\$ 55,000,000	\$ 31,200,000	\$ 23,800,000
SUBTOTALS		\$ 281,000,000	\$ 23,000,000	\$ 13,500,000	\$ 29,500,000	\$ 5,004,406	\$ 219,031	\$ 643,875	\$ 4,500,000	\$ 357,367,312	\$ 325,152,338	\$ 32,214,974
AFAP	2019	\$ -	\$ -	\$ -	\$ -	\$ -	\$ -	\$ -	\$ 25,500,000	\$ 25,500,000	\$ 23,321,759	\$ 2,178,241
TOTALS		\$ 281,000,000	\$ 23,000,000	\$ 13,500,000	\$ 29,500,000	\$ 5,004,406	\$ 219,031	\$ 643,875	\$ 30,000,000	\$ 382,867,312	\$ 348,474,097	\$ 34,393,215

MEASURE E

POST-BID BUDGET vs FINAL BUDGET

Completed Projects	Post-Bid Budget	Final Budget	Post-Bid & Final Budget Variance
1 Bonita Canyon ES - Enclose Classrooms	\$ 912,184	\$ 868,451	\$ 43,733
2 College Park ES - Enclose Classrooms	\$ 3,424,255	\$ 3,248,271	\$ 175,984
3 Creekside HS - Expansion	\$ 5,032,263	\$ 4,843,117	\$ 189,146
4 Culverdale ES - Enclose Classrooms	\$ 1,633,772	\$ 1,601,117	\$ 32,655
5 Eastshore ES - Expansion	\$ 6,132,736	\$ 6,080,570	\$ 52,166
6 Greentree ES - Enclose Classrooms	\$ 2,042,302	\$ 1,913,892	\$ 128,410
7 Irvine HS - Modernization	\$ 7,143,636	\$ 6,922,265	\$ 221,371
8 Lakeside MS - Science Labs	\$ 2,972,572	\$ 2,892,181	\$ 80,391
9 Northwood HS - Field Improvements	\$ 3,815,212	\$ 3,692,908	\$ 122,304
10 Rancho San Joaquin MS - Science Labs	\$ 5,680,277	\$ 5,289,332	\$ 390,945
11 Santiago Hills ES - Enclose Classrooms	\$ 1,498,668	\$ 1,427,186	\$ 71,482
12 Sierra Vista MS - Science Lab	\$ 4,871,155	\$ 4,588,557	\$ 282,598
13 South Lake MS - Science Labs	\$ 3,759,011	\$ 3,557,805	\$ 201,206

14 Stone Creek ES - Enclose Classrooms/Expansion	\$ 4,423,481	\$ 4,295,488	\$ 127,993
15 University HS - Modernization	\$ 5,002,422	\$ 4,628,058	\$ 374,364
16 Venado MS - Science Labs	\$ 5,318,603	\$ 5,184,530	\$ 134,073
17 Westwood Basics Interim	\$ 509,966	\$ 411,938	\$ 98,028
18 Westpark ES - Modernization	\$ 10,519,152	\$ 10,634,410	\$ (115,258)
19 Brywood ES - Modernization	\$ 10,678,948	\$ 11,306,486	\$ (627,538)
20 Brywood ES - Music Classroom	\$ 3,073,480	\$ 2,919,341	\$ 154,139
21 Meadow Park ES - Modernization	\$ 13,056,650	\$ 13,043,246	\$ 13,404
22 Meadow Park ES - Music Classroom	\$ 3,122,369	\$ 2,984,289	\$ 138,080
23 Springbrook ES - Modernization	\$ 12,105,298	\$ 11,965,170	\$ 140,128
24 Springbrook ES - Music Classroom	\$ 3,561,804	\$ 3,318,008	\$ 243,796
25 Woodbridge HS - Field Improvements	\$ 2,974,100	\$ 3,163,725	\$ (189,625)
26 Woodbridge HS - Performing Arts Center	\$ 27,120,257	\$ 28,881,980	\$ (1,761,723)
27 El Camino School - Interim Campus	\$ 1,807,102	\$ 1,260,683	\$ 546,419
TOTALS	\$152,191,674	\$150,923,004	\$ 1,268,670

Percentage below Post-Bid Budget

0.83%



BUDGET

CHANGE ORDERS



MEASURE E CHANGE ORDERS

“A ‘change order’ refers to an official change of any kind in the original scope of work or terms of a construction contract agreed to by the owner, contractor, and project designer.” Associated General Contractors of America

Measure E construction change orders are often the result of (1) District changes, (2) Design revisions, (3) Unforeseen conditions, and (4) Building code clarifications.

Final Change Order Percentages (All Series)					
School		Original Contract	Final Contract	Change Orders	Change Order %
1	Series 1 (complete)	\$ 113,606,920	\$ 113,852,871	\$ 245,951	0.22%
2	Series 2 (in progress)	\$ 9,346,452	\$ 9,117,793	\$ (228,659)	-2.45%
TOTALS		\$ 122,953,372	\$ 122,970,664	\$ 17,292	0.01%

MEASURE E

FINAL CHANGE ORDERS (SERIES 1)

Final Change Order Percentages (Series 1)

School	Original Contract	Final Contract	Change Orders	Change Order %	School	Original Contract	Final Contract	Change Orders	Change Order %
1 Bonita Canyon ES	\$ 687,833	\$ 661,920	\$ (25,913)	-3.77%	14 Westpark ES	\$ 7,535,025	\$ 7,612,852	\$ 77,827	1.03%
2 College Park ES	\$ 1,947,472	\$ 1,997,707	\$ 50,235	2.58%	15 Brywood ES - Mod	\$ 8,022,047	\$ 8,634,679	\$ 612,632	7.64%
3 Culverdale ES	\$ 1,004,045	\$ 1,020,602	\$ 16,557	1.65%	16 Brywood ES - Music	\$ 2,842,214	\$ 2,773,341	\$ (68,873)	-2.42%
4 Greentree ES	\$ 1,263,711	\$ 1,240,335	\$ (23,376)	-1.85%	17 Meadow Park ES - Mod	\$ 9,640,387	\$ 9,856,858	\$ 216,471	2.25%
5 Santiago Hills ES	\$ 1,053,407	\$ 1,050,915	\$ (2,492)	-0.24%	18 Meadow Park ES - Music	\$ 2,889,679	\$ 2,838,289	\$ (51,390)	-1.78%
6 Stone Creek ES	\$ 3,155,560	\$ 3,113,229	\$ (42,331)	-1.34%	19 Eastshore ES	\$ 4,522,529	\$ 4,597,990	\$ 75,461	1.67%
7 Northwood HS	\$ 2,946,419	\$ 3,055,203	\$ 108,784	3.69%	20 Venado MS	\$ 3,798,615	\$ 3,813,274	\$ 14,659	0.39%
8 Irvine HS	\$ 4,704,255	\$ 4,843,227	\$ 138,972	2.95%	21 Creekside HS	\$ 3,681,144	\$ 3,598,072	\$ (83,072)	-2.26%
9 University HS	\$ 3,533,004	\$ 3,519,126	\$ (13,878)	-0.39%	22 Springbrook ES- Mod	\$ 8,110,543	\$ 8,413,410	\$ 302,867	3.73%
10 Sierra Vista MS	\$ 3,643,560	\$ 3,526,896	\$ (116,664)	-3.20%	23 Springbrook ES- Music	\$ 3,387,188	\$ 3,245,008	\$ (142,180)	-4.20%
11 South Lake MS	\$ 2,753,376	\$ 2,688,937	\$ (64,439)	-2.34%	24 Woodbridge HS-Field Imp	\$ 2,568,204	\$ 2,651,706	\$ 83,502	3.25%
12 Lakeside MS	\$ 2,279,702	\$ 2,214,866	\$ (64,836)	-2.84%	25 Woodbridge HS-PAC	\$ 23,435,033	\$ 22,782,163	\$ (652,870)	-2.79%
13 Rancho San Joaquin MS	\$ 4,201,968	\$ 4,102,266	\$ (99,702)	-2.37%	TOTALS	\$ 113,606,920	\$ 113,852,871	\$ 245,951	0.22%

MEASURE E

FINAL CHANGE ORDERS (SERIES 2)

Final Change Order Percentages (Series 2)					
School		Original Contract	Final Contract	Change Orders	Change Order %
1	Bonita Canyon ES	\$ 5,223,926	\$ 5,197,335	\$ (26,591)	-0.51%
2	Turtle Rock ES	\$ 4,122,526	\$ 3,920,458	\$ (202,068)	-4.90%
TOTALS		\$ 9,346,452	\$ 9,117,793	\$ (228,659)	-2.45%



BUDGET

UPDATE BY SERIES



MEASURE E

SERIES 1 UPDATE

Adjustment (10/26/2016)		Adjustment (06/05/2018)		Current (10/24/2022)	
Bond Series 1	\$ 95,000,000	Bond Series 1	\$ 95,000,000	Bond Series 1	\$ 95,000,000
IUSD Funds	\$ 29,600,000	IUSD Funds	\$ 29,600,000	IUSD Funds	\$ 29,600,000
IUSD Funds 1st Adj.	\$ 6,800,000	IUSD Funds 1st Adj.	\$ 6,800,000	IUSD Funds 1st Adj.	\$ 6,800,000
FUNDS	\$ 131,400,000	IUSD Funds 2nd Adj.	\$ 5,100,000	IUSD Funds 2nd Adj.	\$ 5,100,000
		IUSD IT Infrastructure	\$ 643,875	IUSD IT Infrastructure	\$ 643,875
		CTE Grant (CHS)	\$ 348,920	CTE Grant (CHS)	\$ 439,400
		Bond Series 2	\$ 13,115,495	Bond Series 2	\$ 13,115,495
		FUNDS Approved	\$ 150,608,290	IRWD Rebate (NHS)	\$ 174,591
				Fund 40 to WHS Field	\$ 1,000,000
				CTE Grant (WHS)	\$ 3,000,000
				TDP Grant (WHS)	\$ 44,440
				FUNDS Available	\$ 154,917,801
				CURRENT EXPENDITURES	\$ 151,498,946
				SURPLUS FUNDS	\$ 3,418,855

MEASURE E

SERIES 2 UPDATE

Initial Budget (01/19/2019)		Adjustment (12/01/2020)		Current (10/24/2022)	
Bond Series 2	\$ 41,000,000	Bond Series 2	\$ 41,000,000	Bond Series 2	\$ 41,000,000
Bond Funds to Series 1	\$ (13,115,495)	Bond Funds to Series 1	\$ (13,115,495)	Bond Funds to Series 1	\$ (13,115,495)
IUSD Funds	\$ -	IUSD Funds	\$ 3,000,000	IUSD Funds	\$ 3,000,000
FUNDS	\$ 27,884,505	FUNDS Approved	\$ 30,884,505	FUNDS Approved	\$ 32,449,511
				PROJECT BUDGETS	\$ 32,290,186
				SURPLUS	\$ 159,325
				Series 1 Surplus	\$ 3,418,855
				SURPLUS FUNDS	\$ 3,578,180

MEASURE E

SERIES 3 UPDATE

Initial Budget (01/06/2021)		Adjustment (06/02/2021)		Current (10/24/2022)	
Bond Series 3	\$ 30,800,000	Bond Series 3	\$ 45,000,000	Bond Series 3	\$ 45,000,000
IUSD Funds	\$ 23,500,000	IUSD Funds	\$ 23,500,000	IUSD Funds	\$ 23,500,000
IUSD Funds to Series 2	\$ (3,000,000)	IUSD Funds to Series 2	\$ (3,000,000)	IUSD Funds to Series 2	\$ (3,000,000)
FUNDS	\$ 51,300,000	AFAP Made Available	\$ 4,500,000	AFAP Made Available	\$ 4,500,000
		FUNDS Approved	\$ 70,000,000	FUNDS Approved	\$ 70,000,000
				PROJECT BUDGETS	\$ 71,563,206
				DEFICIT	\$ (1,563,206)
				Series 2 Surplus	\$ 3,578,180
				SURPLUS FUNDS	\$ 2,014,974

MEASURE E

AFAP UPDATE

Initial Budget (11/19/2019)		Current Post-Bid Budget (10/24/2022)	
Fund 35	\$ 30,000,000	Fund 35	\$ 30,000,000
		Funds Made Available Series 3	\$ (4,500,000)
FUNDS	\$ 30,000,000	FUNDS	\$ 25,500,000
CURRENT BUDGET	\$ 26,474,790	CURRENT BUDGET	\$ 25,500,000
<i>SURPLUS FUNDS</i> *	\$ 3,525,210	<i>SURPLUS FUNDS</i> *	\$ -

** Any surplus funds will go back to Fund 35, not into Measure E funds.*



MEASURE E **STATE FUNDING**



SCHOOL FACILITY PROGRAM – Funding Sources

- Prop. 51
 - Passed by CA Voters in 2016
 - Authorized \$6 billion in General Bond Funds to K-12 Construction (New Construction, Modernization, CTEFP)
 - Requires Priority Funding Letter semi-annually
 - Current: Bond Funds have been allocated and the State is tracking projects on the Beyond Authority List for future funding opportunities
- Other: State General Fund
 - State Budget
 - Governor Newsom
 - Allocated \$1.3 billion of State One-Time General Funds to K-12 Construction (New Construction, Modernization) for 2022-2023; Additional Funds Allocated for 2023-2025
 - Provides Direct Apportionment for projects funded under this allocation
 - Once Projects have been submitted to SAB for approval, they are immediately eligible for an Apportionment



State Grants Received for Measure E

- State Grants Received for Measure E from Proposition 51 Bond funds

STATE FUNDED PROJECTS (Prop. 51)	
Site Name	Amount Received
Creekside High School (Series 1 CTEFP: Const. Tech.)	\$439,400
Woodbridge High School (Series 1 CTEFP: Perf. Arts)	\$3,000,000
College Park ES (Series 1: MOD)	\$527,914
Culverdale ES (Series 1: MOD)	\$784,679
Santiago Hills ES (Series 1: MOD)	\$625,105
Stone Creek ES (Series 1: MOD)	\$896,562
Stone Creek ES (Series 1: NC)	\$727,603
Irvine HS (Series 1: MOD)	\$4,256,129

The State grants funds are through the State School Facility Program currently under Proposition 51.

STATE FUNDED PROJECTS (Cont'd.)	
Site Name	Amount Received
University HS (Series 1: MOD)	\$735,286
Creekside HS (Series 1: NC)	\$1,166,945
Sierra Vista MS (Series 1: NC)	\$1,671,605
South Lake MS (Series 1: NC)	\$919,005
Eastshore ES (Series 1: MOD)	\$757,980
Eastshore ES (Series 1: NC)	\$833,174
Venado MS (Series 1: NC)	\$2,249,063
Rancho San Joaquin MS (Series 1: MOD)	\$570,899
Rancho San Joaquin MS (Series 1: NC)	\$1,176,896
Springbrook ES (Series 1: MOD)	\$3,472,248
Westpark ES (Series 1: MOD)	\$3,729,015
Brywood ES (Series 1: MOD)	\$3,133,957
Woodbridge HS (Series 1: NC)	\$3,219,613
Springbrook ES (Series 1: NC)	\$1,211,516
Meadow Park ES (Series 1: NC)	\$1,358,675
Meadow Park ES (Series 1: MOD)	\$3,529,201
Brywood ES (Series 1: NC)	\$1,343,490
University Park ES (Series 2: MOD)	\$1,565,006
Total State Funds Received	\$43,900,966



Step 1a: “Acknowledged” List

When no State Funding is available

- Project applications submitted beyond the Proposition 51 Bond Authority
- Subject to IUSD Board Resolution acknowledging exhaustion of funds
- Waiting for future State Bond (potentially in 2024)

Step 1b: “Workload” List

When State Funding is available

- Project applications submitted to OPSC, waiting for staff review
- Anticipate funding under Prop. 51 and General Fund Allocation

STEP 1a: ACKNOWLEDGED LIST

Site Name	Estimated Funding
Turtle Rock ES (Series 2: NC)	\$1,392,800
Northwood ES (Series 2: NC)	\$1,304,500
South Lake MS (Series 3A: NC)	\$447,200
South Lake MS (Series 3A: MOD)	\$5,557,000
Oak Creek ES (Series AFAP: NC)	\$469,100
Total State Funding Acknowledged	\$9,170,660

STEP 1b: OPSC WORKLOAD LIST

Site Name	Anticipated Funding
Bonita Canyon ES (Series 1: MOD)	\$152,700
Greentree ES (Series 1: MOD)	\$249,000
Lakeside MS (Series 1: MOD)	\$435,300
Total State Funding Anticipated	\$837,000



Step 2: “Unfunded (Lack of AB 55)” List

- Project applications have been fully reviewed by OPSC staff
- Subject to bi-annual Priority Funding Letter
- Projects funded with General Fund Allocation not subject to Unfunded List or Priority Funding Letter

Step 3: “Apportioned” List

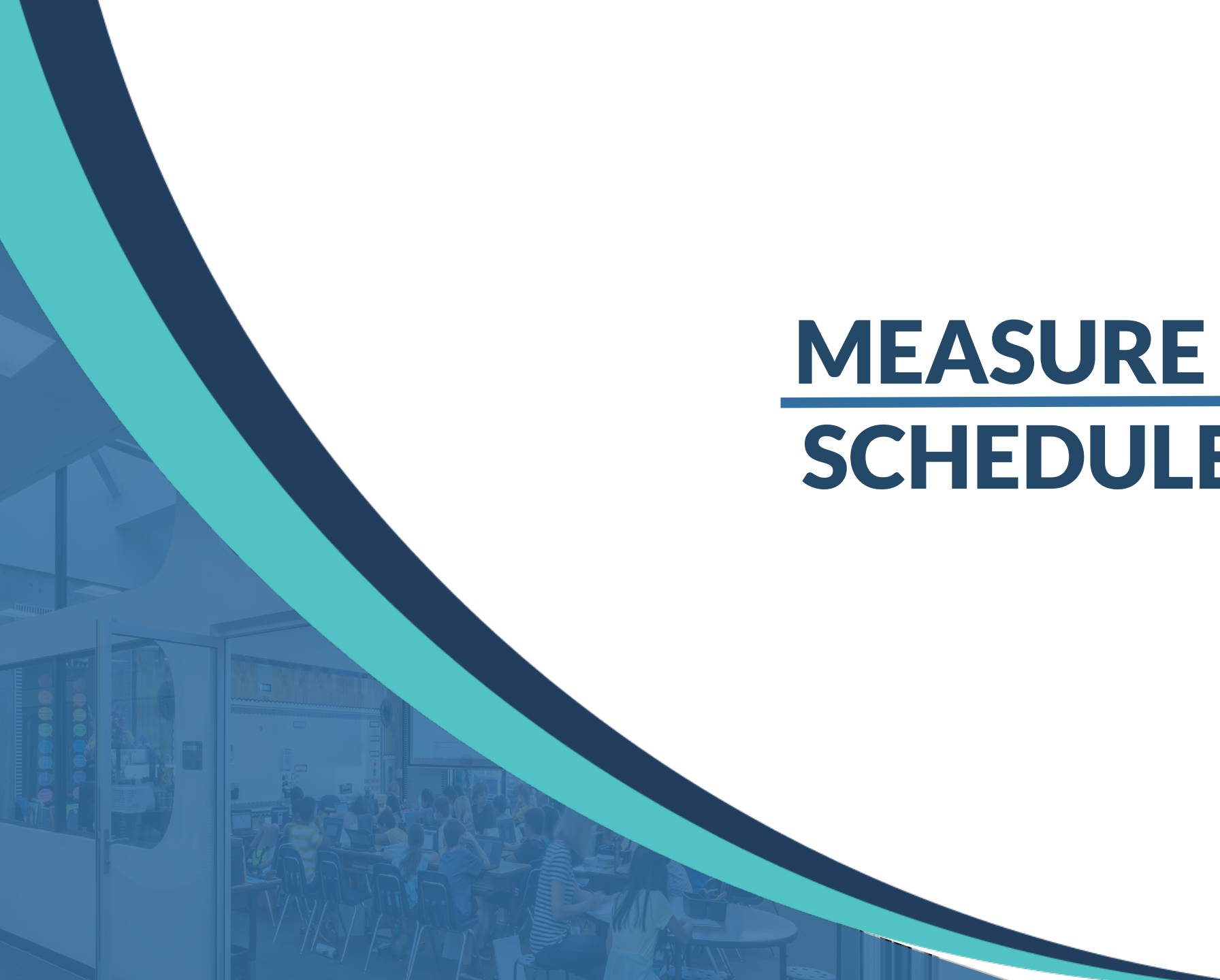
- Project applications that were previously on the Unfunded (Lack of AB 55) list
- Submitted bi-annual Priority Funding Letter
- Shovel-Ready within 90 days of moving to Apportioned list
- Ready for fund Release request funding under Proposition 51 and General Fund

STEP 2: OPSC UNFUNDED LIST

Site Name	Amount Approved
Total State Funded Applications	\$0

STEP 3: APPORTIONED LIST

Site Name	Amount Approved
Total State Funded Applications	\$0



MEASURE E **SCHEDULE**

CURRENT SCHEDULE (Series 2, Series 3 & AFAP)



Woodbridge HS (Series 3)



Irvine HS - Increment No. 1 Deep Foundation Work (Series 3)



Irvine HS - Increment No. 2 Building/Site Improvements (Series 3)



Culverdale ES, Greentree ES, and Santiago Hills ES (Series 3)





MEASURE E

COMPLETED PROJECTS



Criteria for Implementing Projects

- Leverage IUSD Funds in the first 6 years of the Bond to construct projects at 24 of the 28 schools
- Address safety and security
 - Enclose open classrooms at Elementary Schools
- Address older school facilities
 - Modernize facilities over 25 years of age
 - Optimize submittal of potential State funding
- Construct projects at all high schools
 - Impacts a broad range of students
 - Sequence new theaters to minimize impact on VAPA program
- Upgrade/New Science Labs at Middle Schools





Leverage Funds within First Six Years to Construction Projects on 24 of 28 Schools

- By August 18, 2022
 - All 28 schools received improvements
 - One school received second round of improvements
 - Six schools are in the process (design or construction) of receiving second round of improvements





Enclose Open Classrooms

- From 2017 through 2020
 - Ten schools received interior classroom doors
 - Student collaboration spaces



Santiago Hills ES



Greentree ES



Culverdale ES

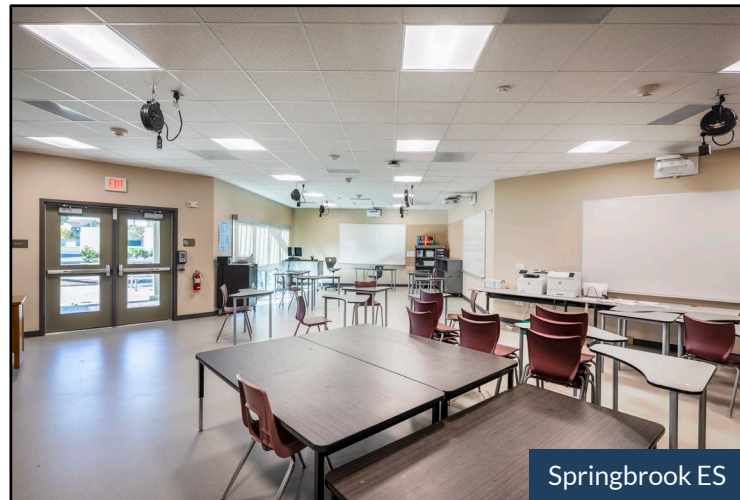


Address Older School Facilities

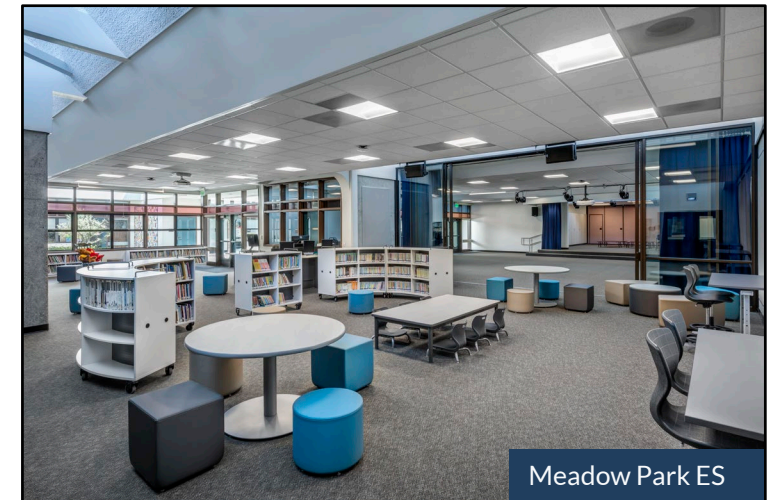
- Summer of 2018 through summer 2020
 - Four elementary schools received campus wide modernizations
 - Expanded nutrition services facilities, student collaboration spaces
 - New music classroom buildings and new Design Labs / Innovation Lab
 - One elementary school received kindergarten expansion
 - One middle school received modernization and new music classroom
 - Two high schools received improvements (modernized eligible classrooms)



Westpark ES



Springbrook ES

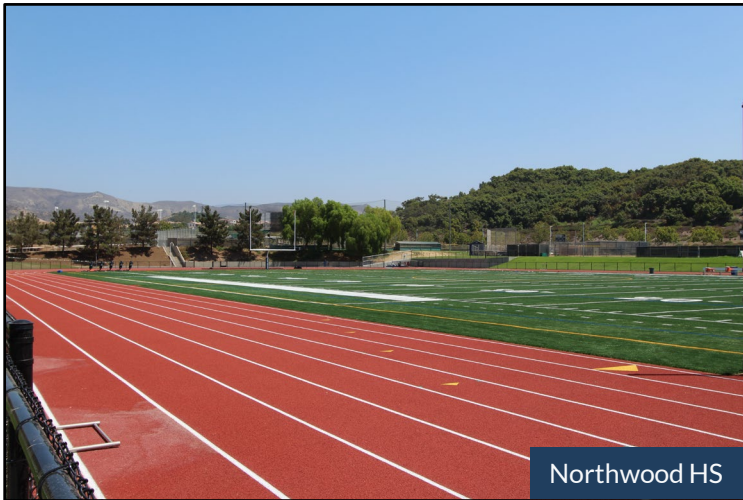


Meadow Park ES



Construct Projects at all High Schools

- By August 18, 2021
 - All five high schools received improvements



Northwood HS



Creekside HS



Woodbridge HS



New or Upgraded Science Classrooms

- By August 18, 2022
- All five middle schools received improvements





MEASURE E

PROJECT UPDATES

NORTHWOOD ES (ICCP Relocation)



Relocation of ICCP relocatable classroom building



Restoration of playfield



New control booth in Multipurpose Room



New connection between MPR and music classroom

SOUTH LAKE MS (Expansion)



Exterior of music classroom expansion



Interior of music classroom expansion



- **Building J and Building K (two-story buildings)**
 - New heat pumps in classrooms and on roof (40)
 - New exhaust fans (11), new cooling tower (1), new boiler (1), and suction pumps (2)
 - New plumbing for units and equipment
 - New ductwork and ductwork replacement in select areas
 - Construction tentatively scheduled for summer 2023 and completed by start of 2023/2024 school year
 - Update HVAC system to current code - more energy efficient and improve classroom environment
- **Phase 1 of Building J and Building K Modernization (HVAC only)**
 - Phase 1 will focus on replacing HVAC system installed with original construction over 30 years ago
 - Phase 2 will focus on modernizing the interior of buildings in Series 5

Series 3 Project



CULVERDALE ES (New MPR Building/Nutrition Services Exp.)



Exterior of new Multipurpose Building



Interior of new Multipurpose Building

CULVERDALE ES (Proposed Site Plan)



Aerial rendering of final site configuration

GREENTREE ES (New MPR Building/Nutrition Services Exp.)



Exterior of new Multipurpose Building



Exterior of new Multipurpose Building



GREENTREE ES (New MPR Building/Nutrition Services Exp.)



Interior of new Multipurpose Building



Interior of new Multipurpose Building

GREENTREE ES (PLANNING)

3



Interior of new Innovation Lab



Interior of new Innovation Lab

GREENTREE ES (PLANNING)



New Multipurpose Building

← Administration Office

Aerial View of new Multipurpose Building

Series 3 Project



SANTIAGO HILLS ES (New MPR Building/Nutrition Services Exp.)



Exterior of new Multipurpose Building



Exterior of new Multipurpose Building

Series 3 Project



CELEBRATING
EDUCATIONAL
EXCELLENCE

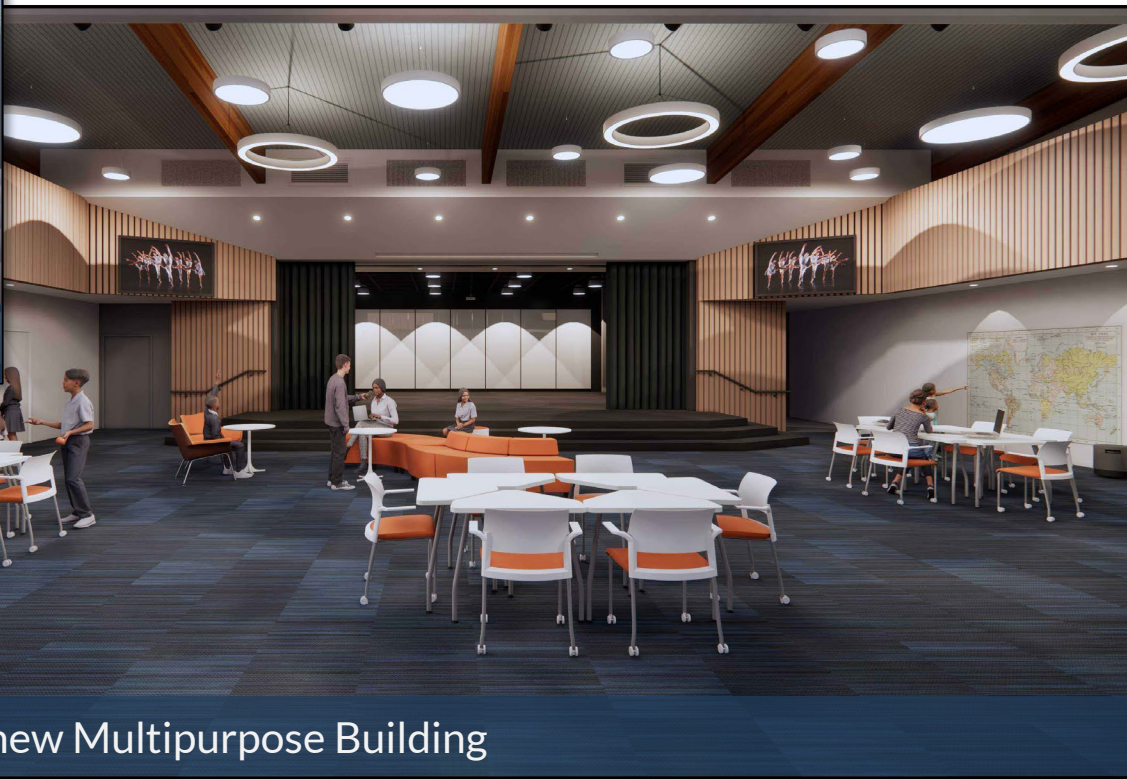
Y E A R S

1972 - 2022

SANTIAGO HILLS ES (New MPR Building/Nutrition Services Exp.)



Interior of new Multipurpose Building



Interior of new Multipurpose Building

Series 3 Project



CELEBRATING
EDUCATIONAL
EXCELLENCE

1972 - 2022

SANTIAGO HILLS ES (PLANNING)

3



Interior of new Innovation Lab



Proposed Nutrition Service canopy

SANTIAGO HILLS ES (PLANNING)

3



Aerial View of New Multipurpose Building

Series 3 Project

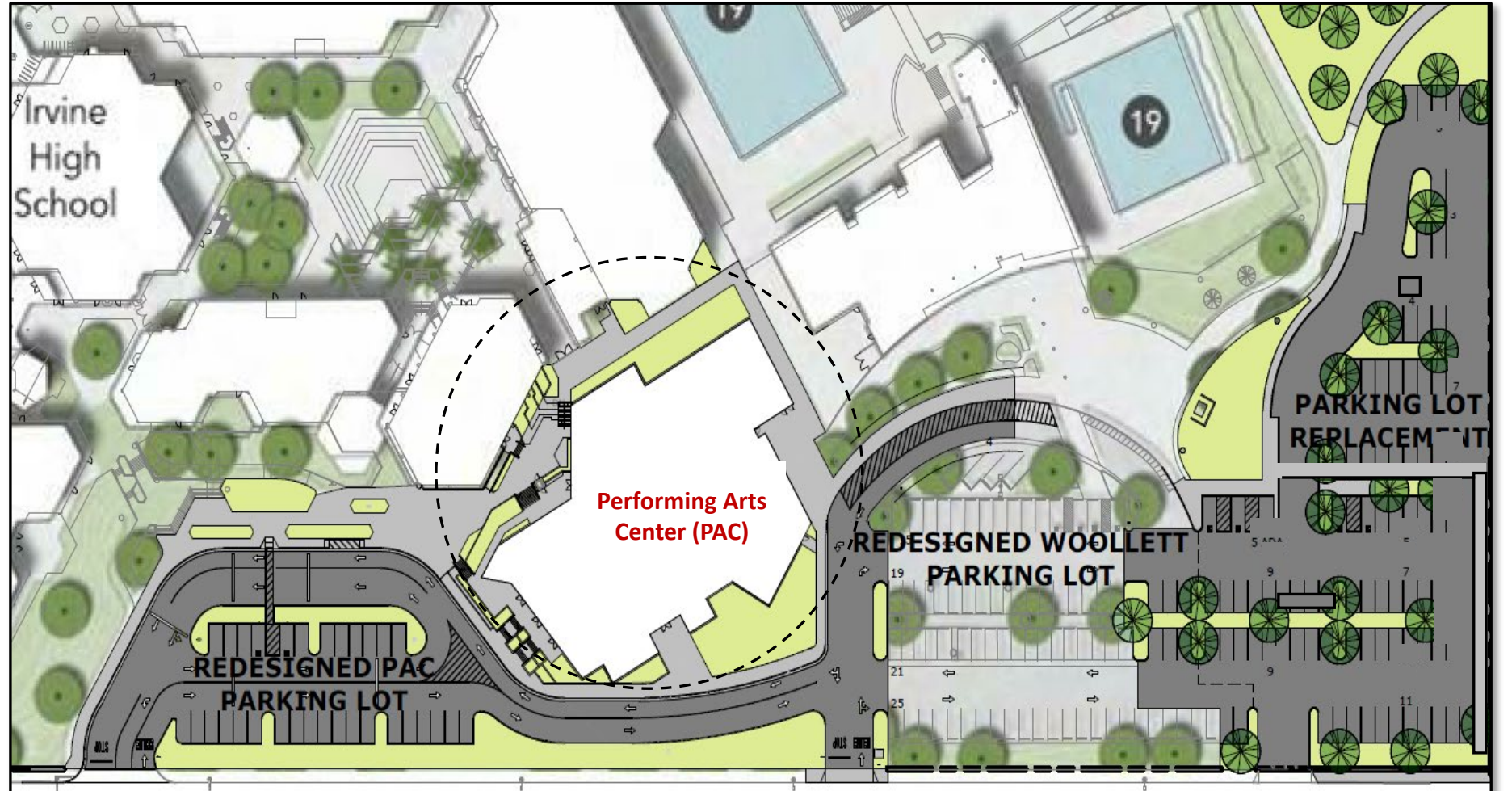




IRVINE HS (PLANNING)

Scope of Work

- Replacement Parking Lot
- Modifications to drop-off
- Redesigned parking lots
- New Performing Arts Center
 - Single level seating
 - 650 seats
 - Scene shop
 - Orchestra pit
 - Lobby
 - Black Box Theater



Series 3 Project



CELEBRATING
EDUCATIONAL
EXCELLENCE

1972 - 2022



IRVINE HS (New Performing Arts Center)

3



Increment No. 1: Ground improvements



Increment No. 1: Ground improvements

Series 3 Project



CELEBRATING
EDUCATIONAL
EXCELLENCE

1972 - 2022



IRVINE HS (New Performing Arts Center)



Street View (Walnut Avenue) of new Performing Arts Center



Performance courtyard of new Performing Arts Center



IRVINE HS (New Performing Arts Center)

3



Main lobby



Entrance into Black Box Theater



IRVINE HS (New Performing Arts Center)



House seating and stage



House seating and stage

CANYON VIEW ES (Innovation /Design Labs)



Outside of Innovation Lab



Inside of Design Lab

Accelerated Funds to Augment Projects



OAK CREEK ES (Lunch Shelter)



Lunch shelter



Lunch shelter adjacent to Nutrition Services

Accelerated Funds to Augment Projects



DEERFIELD ES (Nutrition Services Expansion)



Expansion and site improvements



New speed line and entrance into food service

Accelerated Funds to Augment Projects



PLAZA VISTA SCHOOL (Kindergarten Renovation)



Kindergarten classroom renovation



New kindergarten shade structure

Accelerated Funds to Augment Projects



QUESTIONS

NEXT MEETING

January 30, 2023 at 6:30pm

Location: South Lake Middle School