



MEASURE E

Citizens Oversight Committee Quarterly Meeting

January 30, 2023

Board of Education

Paul Bokota
Lauren Brooks, President
Jeff Kim
Katie McEwen
Cyril Yu



AGENDA

Budget

State Funding

Schedule

Project Updates

- Series 2018B (Series 2)
- Series 2021C (Series 3)
- Augmented Funds to Accelerate Projects (AFAP)





BUDGET

PROGRAM BUDGET

MEASURE E

REVISED BOND SERIES

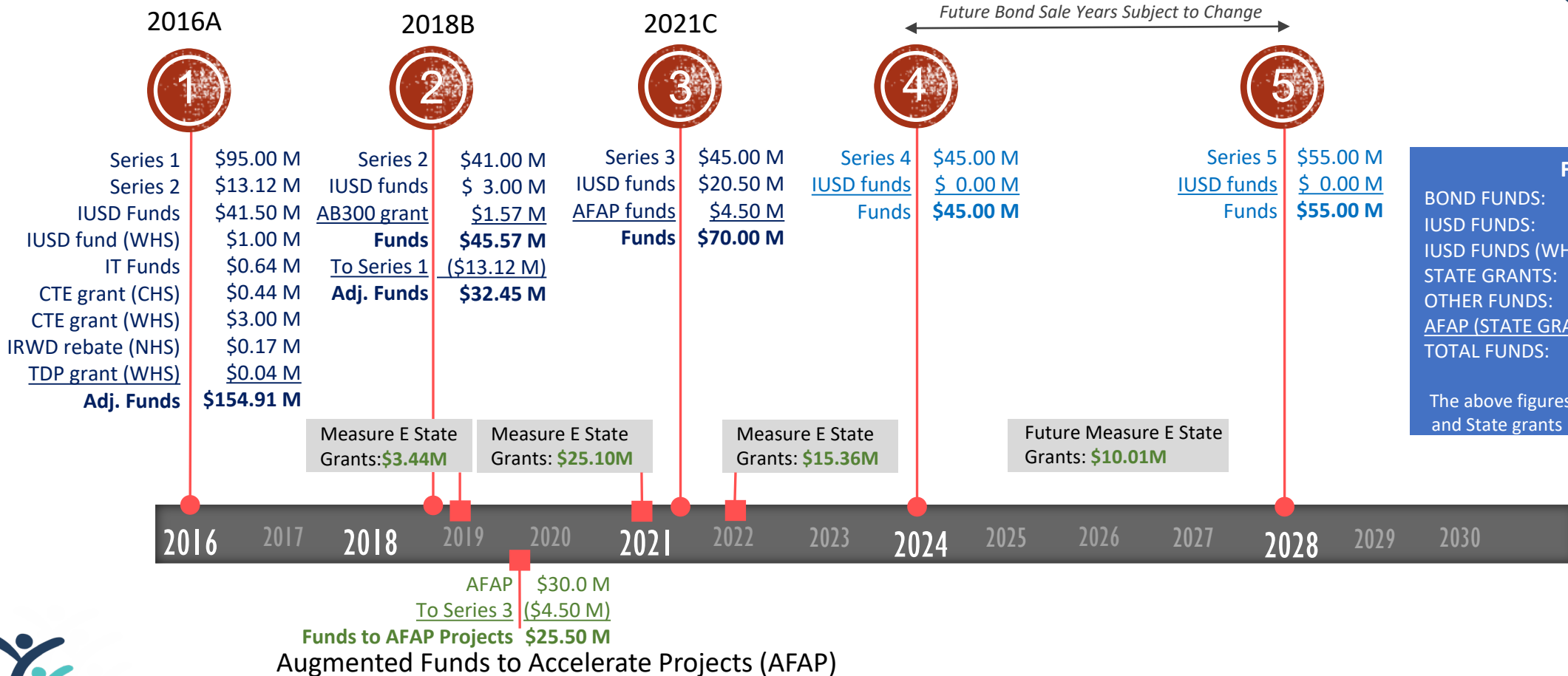
- Series 1 funds received October 26, 2016
- Series 2 funds received September 13, 2018
- Series 3 funds received April 7, 2021

<u>ORIGINAL</u>		<u>ISSUED/PROPOSED</u>	
2016 (Series 1)	\$ 95.0M	2016 (Series 1)	\$ 95.0M
2021 (Series 2)	\$ 51.9M	2018 (Series 2)	\$ 41.0M
2025 (Series 3)	\$ 49.4M	2021 (Series 3)	\$ 45.0M
2029 (Series 4)	\$ 54.5M	2024 (Series 4)	\$ 45.0M
<u>TOTAL</u>	<u>\$ 250.8M *</u>	<u>2028 (Series 5)</u>	<u>\$ 55.0M</u>
		TOTAL	\$281.0M*

*Maximum Bond Capacity is \$319.0M

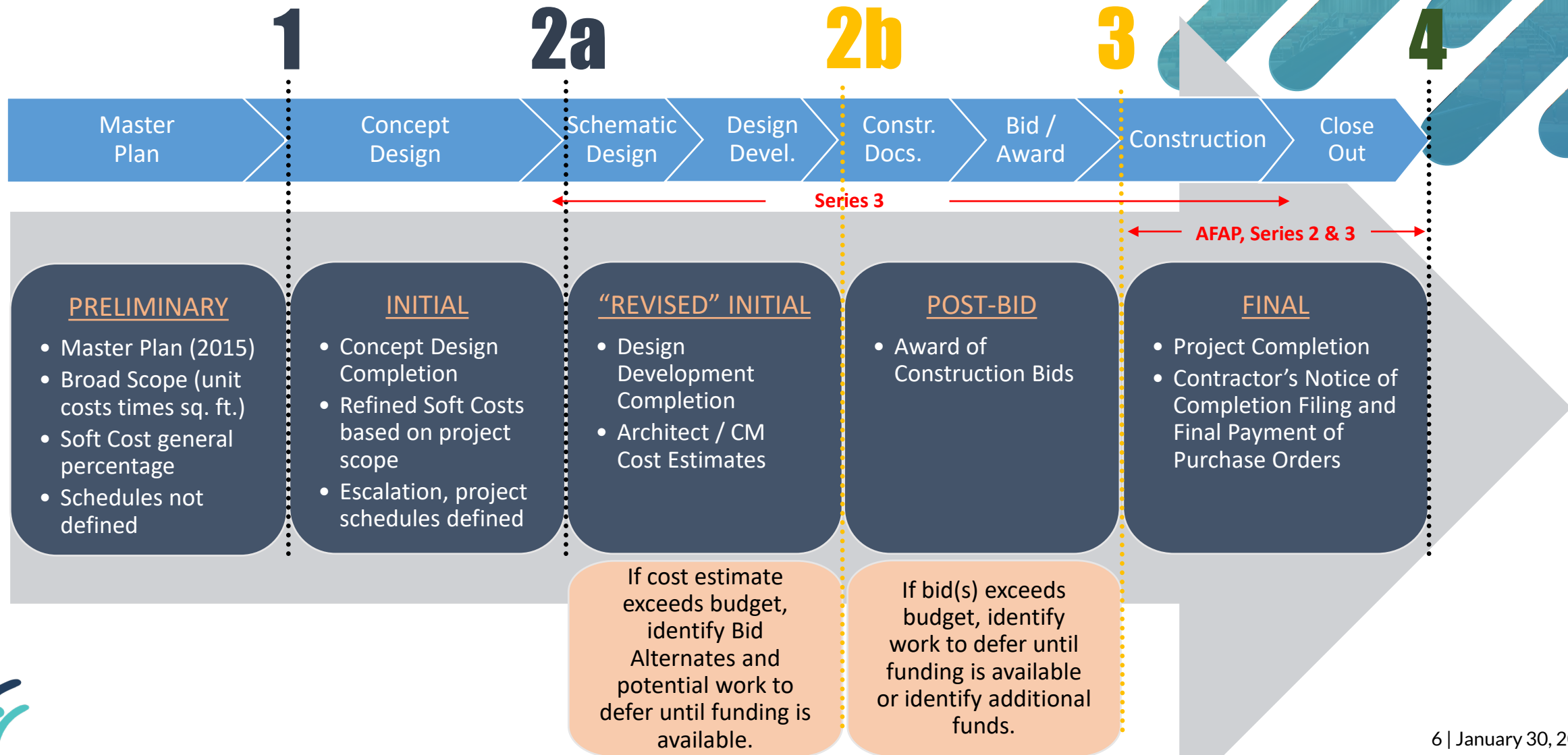


MEASURE E FUNDING TIMELINE



MEASURE E

BUDGET VERSIONS



MEASURE E

BUDGET SUMMARY

Series	Bond Sale Year	Funds Available								Total Funds Authorized [I] [Sum of A thru H]	Project Expenditures or Budgeted [J]	Funds Available / (Deficit) [K] [I-J]	CUMULATIVE TOTALS [L]
		[A]	[B]	[C]	[D]	[E]	[F]	[G]	[H]				
		Bonds	District			State Grants Received (Fund 35)	Other Grants / Rebates	Other Funds	Committed Funds to AFAP (Fund 35)				
Fund 01 (CFD 86-1)	Fund 25		Fund 40										
Series 1	2016	\$ 108,115,495	\$ 23,000,000	\$ 12,231,276	\$ 6,000,000	\$ 3,439,400	\$ 219,031	\$ 643,875	\$ -	\$ 153,649,077	\$ 151,523,846	\$ 2,125,231	\$ 2,125,231
Series 2	2018	\$ 27,884,505	\$ -	\$ 1,268,724	\$ 3,000,000	\$ 1,565,006	\$ -	\$ -	\$ -	\$ 33,718,235	\$ 32,290,186	\$ 1,428,049	\$ 3,553,280
Series 3	2021	\$ 45,000,000	\$ 16,400,000	\$ -	\$ 4,100,000	\$ -	\$ -	\$ -	\$ 4,500,000	\$ 70,000,000	\$ 71,563,206	\$ (1,563,206)	\$ 1,990,074
Series 4	2024	\$ 45,000,000	\$ -	\$ -	\$ -	\$ -	\$ -	\$ -	\$ -	\$ 45,000,000	\$ 38,600,000	\$ 6,400,000	\$ 8,390,074
Series 5	2028	\$ 55,000,000	\$ -	\$ -	\$ -	\$ -	\$ -	\$ -	\$ -	\$ 55,000,000	\$ 31,200,000	\$ 23,800,000	\$ 32,190,074
SUBTOTALS		\$ 281,000,000	\$ 39,400,000	\$ 13,500,000	\$ 13,100,000	\$ 5,004,406	\$ 219,031	\$ 643,875	\$ 4,500,000	\$ 357,367,312	\$ 325,177,238	\$ 32,190,074	
AFAP	2019	\$ -	\$ -	\$ -	\$ -	\$ -	\$ -	\$ -	\$ 25,500,000	\$ 25,500,000	\$ 23,321,759	\$ 2,178,241	
TOTALS		\$ 281,000,000	\$ 39,400,000	\$ 13,500,000	\$ 13,100,000	\$ 5,004,406	\$ 219,031	\$ 643,875	\$ 30,000,000	\$ 382,867,312	\$ 348,498,997	\$ 34,368,315	



MEASURE E

POST-BID BUDGET vs FINAL BUDGET

Completed Projects		Post-Bid Budget	Final Budget	Post-Bid & Final Budget Variance
1	Bonita Canyon ES - Enclose Classrooms	\$ 912,184	\$ 868,451	\$ 43,733
2	College Park ES - Enclose Classrooms	\$ 3,424,255	\$ 3,248,271	\$ 175,984
3	Creekside HS - Expansion	\$ 5,032,263	\$ 4,843,117	\$ 189,146
4	Culverdale ES - Enclose Classrooms	\$ 1,633,772	\$ 1,601,117	\$ 32,655
5	Eastshore ES - Expansion	\$ 6,132,736	\$ 6,080,570	\$ 52,166
6	Greentree ES - Enclose Classrooms	\$ 2,042,302	\$ 1,913,892	\$ 128,410
7	Irvine HS - Modernization	\$ 7,143,636	\$ 6,922,265	\$ 221,371
8	Lakeside MS - Science Labs	\$ 2,972,572	\$ 2,892,181	\$ 80,391
9	Northwood HS - Field Improvements	\$ 3,815,212	\$ 3,692,908	\$ 122,304
10	Rancho San Joaquin MS - Science Labs	\$ 5,680,277	\$ 5,289,332	\$ 390,945
11	Santiago Hills ES - Enclose Classrooms	\$ 1,498,668	\$ 1,427,186	\$ 71,482
12	Sierra Vista MS - Science Lab	\$ 4,871,155	\$ 4,588,557	\$ 282,598
13	South Lake MS - Science Labs	\$ 3,759,011	\$ 3,557,805	\$ 201,206

14	Stone Creek ES - Enclose Classrooms/Expansion	\$ 4,423,481	\$ 4,295,488	\$ 127,993
15	University HS - Modernization	\$ 5,002,422	\$ 4,628,058	\$ 374,364
16	Venado MS - Science Labs	\$ 5,318,603	\$ 5,184,530	\$ 134,073
17	Westwood Basics Interim	\$ 509,966	\$ 411,938	\$ 98,028
18	Westpark ES - Modernization	\$ 10,519,152	\$ 10,634,410	\$ (115,258)
19	Brywood ES - Modernization	\$ 10,678,948	\$ 11,306,486	\$ (627,538)
20	Brywood ES - Music Classroom	\$ 3,073,480	\$ 2,919,341	\$ 154,139
21	Meadow Park ES - Modernization	\$ 13,056,650	\$ 13,043,246	\$ 13,404
22	Meadow Park ES - Music Classroom	\$ 3,122,369	\$ 2,984,289	\$ 138,080
23	Springbrook ES - Modernization	\$ 12,105,298	\$ 11,965,170	\$ 140,128
24	Springbrook ES - Music Classroom	\$ 3,561,804	\$ 3,318,008	\$ 243,796
25	Woodbridge HS - Field Improvements	\$ 2,974,100	\$ 3,163,725	\$ (189,625)
26	Woodbridge HS - Performing Arts Center	\$ 27,120,257	\$ 28,881,980	\$ (1,761,723)
27	El Camino School - Interim Campus	\$ 1,807,102	\$ 1,260,683	\$ 546,419
TOTALS		\$152,191,674	\$150,923,004	\$ 1,268,670

Percentage below Post-Bid Budget

0.83%



MEASURE E

PROJECT COSTS (TYPICAL)

Project costs are separated into Hard Costs and Soft Costs:

- **Hard Costs**
 - Construction costs
 - Contractors, subcontractors, vendors, material suppliers
 - Labor, equipment, materials
 - Construction Management services, Labor Compliance oversight, staff administration costs
 - Furniture, Furnishings and Equipment (FF&E)
 - Contingency (change orders)
- **Softs Costs**
 - Architect, engineers, consultants, attorney, land surveyor
 - Testing and inspection (materials testing, special inspections, geotechnical testing & inspection, and Division of State Architect inspection)
 - Fees/Permits
 - Administrative expenses
 - Contingency (additional services, unexpected costs)



MEASURE E

PROJECT COSTS

Enclosed Open Classrooms

• Bonita Canyon ES (S1)	\$868,451
• College Park ES (S1)*	\$3,307,161
• Culverdale ES (S1)	\$1,601,117
• Greentree ES (S1)	\$1,913,892
• Stone Creek ES (S1)	\$4,295,488
• Santiago Hills ES (S1)	\$1,427,186

Modernization – campus wide

• Brywood ES (S1)	\$11,306,486
• Meadow Park ES (S1)	\$13,043,246
• Springbrook ES (S1)	\$11,965,170
• Westpark ES (S1)*	\$10,644,010
• South Lake MS (S2/S3)**	\$9,631,422

Modernization - partial

• Irvine HS (S1)	\$6,922,265
• University HS (S1)*	\$4,664,703
• Woodbridge HS (S2)**	\$4,956,477

New/Modernized Science Classrooms

• Lakeside MS (S1)	\$2,892,181
• Rancho San Joaquin MS (S1)	\$5,289,332
• Sierra Vista MS (S1)	\$4,588,557
• South Lake MS (S1)	\$3,557,805
• Venado MS (S1)	\$5,184,530

New Performing Arts Center

• Woodbridge HS (S1)	\$28,875,350
• Irvine HS (S3/AFAP)**	\$34,152,250

*Indicates Series 1 Budget amounts with slight cost overages.

**Indicates current Budget amount with ongoing expenditures.



MEASURE E

PROJECT COSTS

New Music Classrooms

- Brywood ES (S1) \$2,919,341
- Meadow Park ES (S1) \$2,984,289
- Springbrook ES (S1) \$3,318,008

New Synthetic Track and Field

- Northwood HS (S1) \$3,692,908
- Woodbridge HS (S1) \$3,163,725

New Multipurpose Building

- Bonita Canyon ES (S2)** \$6,670,497

New Classroom Bldg/Renovations

- University Park ES (S2)** \$10,467,030

Expansion/Renovations

- Eastshore ES (S1) \$6,080,570
- South Lake MS (S2/S3)** \$3,680,114
- Creekside HS (S1) \$4,843,117

New Music Classroom Bldg/Renovations

- Canyon View ES (AFAP)** \$4,931,967
- Deerfield ES (AFAP)** \$5,559,134
- Northwood ES (S2)** \$7,345,102
- Oak Creek ES (AFAP)** \$3,833,428
- Turtle Rock ES (S2)** \$5,365,179
- Plaza Vista School (AFAP)** \$6,193,428

*Indicates Series 1 Budget amounts with slight cost overages.

**Indicates current Budget amount with ongoing expenditures.



MEASURE E

PROJECT COSTS (EXPENDITURES)*

Multipurpose Bldg/Renovations

- Culverdale ES (S3)** \$8,379,125
- Greentree ES (S3)** \$7,665,179
- Santiago Hills ES (S3)** \$7,581,818

Interim Housing

- El Camino School (S1) \$411,938
- Westwood Basics (S1) \$1,260,683

Program Costs – All Series

- Series 1* \$502,337
- Series 2** \$113,513
- Series 3 \$0
- AFAP \$0

*Indicates Series 1 Budget amounts with slight cost overages.

**Indicates current Budget amount with ongoing expenditures.





BUDGET

CHANGE ORDERS



MEASURE E

CHANGE ORDERS (SUMMARY)

“A ‘change order’ refers to an official change of any kind in the original scope of work or terms of a construction contract agreed to by the owner, contractor, and project designer.” Associated General Contractors of America

Measure E construction change orders are often the result of (1) District changes, (2) Design revisions, (3) Unforeseen conditions, and (4) Building code clarifications.

Final Change Order Percentages (All Series)					
School		Original Contract	Final Contract	Change Orders	Change Order %
1	Series 1 (complete)	\$ 113,606,920	\$ 113,852,871	\$ 245,951	0.22%
2	Series 2 (in progress)	\$ 9,346,452	\$ 9,117,793	\$ (228,659)	-2.45%
TOTALS		\$ 122,953,372	\$ 122,970,664	\$ 17,292	0.01%



MEASURE E

FINAL CHANGE ORDERS (SERIES 1)

Final Change Order Percentages (Series 1)

School	Original Contract	Final Contract	Change Orders	Change Order %	School	Original Contract	Final Contract	Change Orders	Change Order %
1 Bonita Canyon ES	\$ 687,833	\$ 661,920	\$ (25,913)	-3.77%	14 Westpark ES	\$ 7,535,025	\$ 7,612,852	\$ 77,827	1.03%
2 College Park ES	\$ 1,947,472	\$ 1,997,707	\$ 50,235	2.58%	15 Brywood ES - Mod	\$ 8,022,047	\$ 8,634,679	\$ 612,632	7.64%
3 Culverdale ES	\$ 1,004,045	\$ 1,020,602	\$ 16,557	1.65%	16 Brywood ES - Music	\$ 2,842,214	\$ 2,773,341	\$ (68,873)	-2.42%
4 Greentree ES	\$ 1,263,711	\$ 1,240,335	\$ (23,376)	-1.85%	17 Meadow Park ES - Mod	\$ 9,640,387	\$ 9,856,858	\$ 216,471	2.25%
5 Santiago Hills ES	\$ 1,053,407	\$ 1,050,915	\$ (2,492)	-0.24%	18 Meadow Park ES - Music	\$ 2,889,679	\$ 2,838,289	\$ (51,390)	-1.78%
6 Stone Creek ES	\$ 3,155,560	\$ 3,113,229	\$ (42,331)	-1.34%	19 Eastshore ES	\$ 4,522,529	\$ 4,597,990	\$ 75,461	1.67%
7 Northwood HS	\$ 2,946,419	\$ 3,055,203	\$ 108,784	3.69%	20 Venado MS	\$ 3,798,615	\$ 3,813,274	\$ 14,659	0.39%
8 Irvine HS	\$ 4,704,255	\$ 4,843,227	\$ 138,972	2.95%	21 Creekside HS	\$ 3,681,144	\$ 3,598,072	\$ (83,072)	-2.26%
9 University HS	\$ 3,533,004	\$ 3,519,126	\$ (13,878)	-0.39%	22 Springbrook ES- Mod	\$ 8,110,543	\$ 8,413,410	\$ 302,867	3.73%
10 Sierra Vista MS	\$ 3,643,560	\$ 3,526,896	\$ (116,664)	-3.20%	23 Springbrook ES- Music	\$ 3,387,188	\$ 3,245,008	\$ (142,180)	-4.20%
11 South Lake MS	\$ 2,753,376	\$ 2,688,937	\$ (64,439)	-2.34%	24 Woodbridge HS-Field Imp	\$ 2,568,204	\$ 2,651,706	\$ 83,502	3.25%
12 Lakeside MS	\$ 2,279,702	\$ 2,214,866	\$ (64,836)	-2.84%	25 Woodbridge HS-PAC	\$ 23,435,033	\$ 22,782,163	\$ (652,870)	-2.79%
13 Rancho San Joaquin MS	\$ 4,201,968	\$ 4,102,266	\$ (99,702)	-2.37%	TOTALS	\$ 113,606,920	\$ 113,852,871	\$ 245,951	0.22%



MEASURE E

FINAL CHANGE ORDERS (SERIES 2)

Final Change Order Percentages (Series 2)					
School		Original Contract	Final Contract	Change Orders	Change Order %
1	Bonita Canyon ES	\$ 5,223,926	\$ 5,197,335	\$ (26,591)	-0.51%
2	Turtle Rock ES	\$ 4,122,526	\$ 3,920,458	\$ (202,068)	-4.90%
TOTALS		\$ 9,346,452	\$ 9,117,793	\$ (228,659)	-2.45%





BUDGET

UPDATE BY SERIES



MEASURE E

BUDGET ITERATIONS (SERIES 1)

Adjustment (10/26/2016)

Fund Source	Funding
Bond Series 1	\$ 95,000,000
IUSD Funds	\$ 29,600,000
IUSD Funds 1st Adj.	\$ 6,800,000
FUNDS	\$ 131,400,000

Adjustment (06/05/2018)

Fund Source	Funding
Bond Series 1	\$ 95,000,000
IUSD Funds	\$ 29,600,000
IUSD Funds 1st Adj.	\$ 6,800,000
IUSD Funds 2nd Adj.	\$ 5,100,000
IUSD IT Infrastructure	\$ 643,875
CTE Grant (CHS)	\$ 348,920
Bond Series 2	\$ 13,115,495
FUNDS	\$ 150,608,290

Current (01/30/2023)

Fund Source	Funding
Bond Series 1	\$ 95,000,000
IUSD Funds	\$ 29,600,000
IUSD Funds 1st Adj.	\$ 6,800,000
IUSD Funds 2nd Adj.	\$ 5,100,000
IUSD IT Infrastructure	\$ 643,875
CTE Grant (CHS)	\$ 439,400
Bond Series 2	\$ 13,115,495
IRWD Rebate (NHS)	\$ 174,591
Fund 40 to WHS Field	\$ 1,000,000
CTE Grant (WHS)	\$ 3,000,000
TDP Grant (WHS)	\$ 44,440
FUNDS	\$ 154,917,801



MEASURE E

BUDGET ITERATIONS (SERIES 2)

Initial Budget (01/19/2019)		Adjustment (12/01/2020)		Current (01/30/2023)	
Fund Source	Funding	Fund Source	Funding	Fund Source	Funding
Bond Series 2	\$ 41,000,000	Bond Series 2	\$ 41,000,000	Bond Series 2	\$ 41,000,000
Bond Funds to Series 1	\$ (13,115,495)	Bond Funds to Series 1	\$ (13,115,495)	Bond Funds to Series 1	\$ (13,115,495)
IUSD Funds	\$ -	IUSD Funds	\$ 3,000,000	IUSD Funds	\$ 3,000,000
FUNDS	\$ 27,884,505	FUNDS	\$ 30,884,505	AB300 Grant (UPES)	\$ 1,565,006
				FUNDS	\$ 32,449,511



MEASURE E

BUDGET ITERATIONS (SERIES 3)

Initial Budget (01/06/2021)

Fund Source	Funding
Bond Series 3	\$ 30,800,000
IUSD Funds	\$ 23,500,000
IUSD Funds to Series 2	\$ (3,000,000)
FUNDS	\$ 51,300,000

Adjustment (06/02/2021)

Fund Source	Funding
Bond Series 3	\$ 45,000,000
IUSD Funds	\$ 23,500,000
IUSD Funds to Series 2	\$ (3,000,000)
AFAP Made Available	\$ 4,500,000
FUNDS	\$ 70,000,000

Current (01/30/2023)

Fund Source	Funding
Bond Series 3	\$ 45,000,000
IUSD Funds	\$ 23,500,000
IUSD Funds to Series 2	\$ (3,000,000)
AFAP Made Available	\$ 4,500,000
FUNDS	\$ 70,000,000



MEASURE E

BUDGET ITERATIONS (AFAP)

Initial Budget (11/19/2019)	
Fund 35	\$ 30,000,000
FUNDS	\$ 30,000,000

Current Post-Bid Budget (01/30/2023)	
Fund 35	\$ 30,000,000
Funds Made Available Series 3	\$ (4,500,000)
FUNDS	\$ 25,500,000





MEASURE E **STATE FUNDING**

OFFICE OF PUBLIC SCHOOL CONSTRUCTION: STATE GRANTS

State Grants Received

➤ State Grants Received from Proposition 51 Bond funds

STATE FUNDED PROJECTS (Prop. 51) – Measure E Only	
Site Name	Amount Received
Creekside High School (Series 1 CTEFP: Const. Tech.)	\$439,400
Woodbridge High School (Series 1 CTEFP: Perf. Arts)	\$3,000,000
College Park ES (Series 1: MOD)	\$527,914
Culverdale ES (Series 1: MOD)	\$784,679
Santiago Hills ES (Series 1: MOD)	\$625,105
Stone Creek ES (Series 1: MOD)	\$896,562
Stone Creek ES (Series 1: NC)	\$727,603
Irvine HS (Series 1: MOD)	\$4,256,129

The State grants funds are through the State School Facility Program currently under Proposition 51.

STATE FUNDED PROJECTS – Measure E Only (Cont'd.)	
Site Name	Amount Received
University HS (Series 1: MOD)	\$735,286
Creekside HS (Series 1: NC)	\$1,166,945
Sierra Vista MS (Series 1: NC)	\$1,671,605
South Lake MS (Series 1: NC)	\$919,005
Eastshore ES (Series 1: MOD)	\$757,980
Eastshore ES (Series 1: NC)	\$833,174
Venado MS (Series 1: NC)	\$2,249,063
Rancho San Joaquin MS (Series 1: MOD)	\$570,899
Rancho San Joaquin MS (Series 1: NC)	\$1,176,896
Springbrook ES (Series 1: MOD)	\$3,472,248
Westpark ES (Series 1: MOD)	\$3,729,015
Brywood ES (Series 1: MOD)	\$3,133,957
Woodbridge HS (Series 1: NC)	\$3,219,613
Springbrook ES (Series 1: NC)	\$1,211,516
Meadow Park ES (Series 1: NC)	\$1,358,675
Meadow Park ES (Series 1: MOD)	\$3,529,201
Brywood ES (Series 1: NC)	\$1,343,490
University Park ES (Series 2: MOD)	\$1,565,006
Total State Funds Received	\$43,900,966



OFFICE OF PUBLIC SCHOOL CONSTRUCTION: STATE GRANTS

Step 1a: “Acknowledged” List

When no State Funding is available

- Project applications submitted beyond the Proposition 51 Bond Authority
- Subject to IUSD Board Resolution acknowledging exhaustion of funds
- Waiting for future State Bond (potentially in 2024)

Step 1b: “Workload” List

When State Funding is available

- Project applications submitted to OPSC, waiting for staff review
- Anticipate funding under Prop. 51 and General Fund Allocation

STEP 1a: ACKNOWLEDGED LIST – Measure E Only

Site Name	Estimated Funding
Turtle Rock ES (Series 2: NC)	\$1,392,800
Northwood ES (Series 2: NC)	\$1,304,500
South Lake MS (Series 3A: NC)	\$447,200
South Lake MS (Series 3A: MOD)	\$5,557,000
Oak Creek ES (Series AFAP: NC)	\$469,100
Total State Funding Acknowledged	\$9,170,660

STEP 1b: OPSC WORKLOAD LIST – Measure E Only

Site Name	Anticipated Funding
Bonita Canyon ES (Series 1: MOD)	\$152,700
Greentree ES (Series 1: MOD)	\$249,000
Lakeside MS (Series 1: MOD)	\$435,300
Total State Funding Anticipated	\$837,000



OFFICE OF PUBLIC SCHOOL CONSTRUCTION: STATE GRANTS

Step 2: “Unfunded (Lack of AB 55)” List

- Project applications have been fully reviewed by OPSC staff
- Subject to bi-annual Priority Funding Letter
- Projects funded with General Fund Allocation not subject to Unfunded List or Priority Funding Letter

Step 3: “Apportioned” List

- Project applications that were previously on the Unfunded (Lack of AB 55) list
- Submitted bi-annual Priority Funding Letter
- Shovel-Ready within 90 days of moving to Apportioned list
- Ready for fund Release request funding under Proposition 51 and General Fund

STEP 2: OPSC UNFUNDED LIST – Measure E Only

Site Name	Amount Approved
Total State Funded Applications	\$0

STEP 3: APPORTIONED LIST – Measure E Only

Site Name	Amount Approved
Total State Funded Applications	\$0





MEASURE E

PROGRAM SCHEDULE

MEASURE E PROGRAM SCHEDULE*



Woodbridge HS (Series 3)



Irvine HS - Increment No. 1 Deep Foundation Work (Series 3)



Irvine HS - Increment No. 2 Building/Site Improvements (Series 3)



Culverdale ES, Greentree ES, and Santiago Hills ES (Series 3)



**Series 1, Series 2, and AFAP projects are all complete. Series 2 and AFAP projects are in the close-out phase.*



MEASURE E

UPCOMING BID DATES

Project	Bid Date
Irvine HS PAC Inc. 2	February 16, 2023
Culverdale ES Expansion	March 2, 2023
Woodbridge HS HVAC	March 23, 2023
Greentree ES & Santiago Hills ES Expansions	April 13, 2023

Current Construction Market Impacts

- Materials are leveling off from their peak price from 2022 with exception of ready mix concrete, copper and aluminum, and paint and roof coatings.
- Labor shortages remain a challenge for the construction industry.
- Supply chains are improving, however there continue to be impacts to material and equipment procurement.





MEASURE E

PROJECT UPDATES

WOODBIDGE HS (HVAC Upgrades)



- Building J and Building K (two-story buildings)
 - New heat pumps in classrooms and on roof (40)
 - New exhaust fans (11), new cooling tower (1), new boiler (1), and suction pumps (2)
 - New plumbing for units and equipment
 - New ductwork and ductwork replacement in select areas
 - Construction tentatively scheduled for summer 2024 and completed by start of 2024/2025 school year
 - Update HVAC system to current code - more energy efficient and improve classroom environment
- Phase 1 of Building J and Building K Modernization (HVAC only)
 - Phase 1 will focus on replacing HVAC system installed with original construction over 30 years ago
 - Phase 2 will focus on modernizing the interior of buildings in Series 5

Measure E
Series 3 Project



CULVERDALE ES (Aerial Rendering)



Aerial rendering of final site configuration

Measure E
Series 3 Project



CULVERDALE ES (New MPR Building/Nutrition Services Exp.)



Exterior of new Multipurpose Building



Interior of new Multipurpose Building

Measure E
Series 3 Project



GREENTREE ES (Aerial Rendering)



New Multipurpose Building

← Administration Office

Aerial View of new Multipurpose Building

Measure E
Series 3 Project



GREENTREE ES (New MPR Building/Nutrition Services Exp.)

3



Exterior of new Multipurpose Building



Interior of new Multipurpose Building

**Measure E
Series 3 Project**



GREENTREE ES (Innovation Lab)

3



Interior of new Innovation Lab



Interior of new Innovation Lab

Measure E
Series 3 Project



SANTIAGO HILLS ES (Aerial Rendering)



Measure E
Series 3 Project

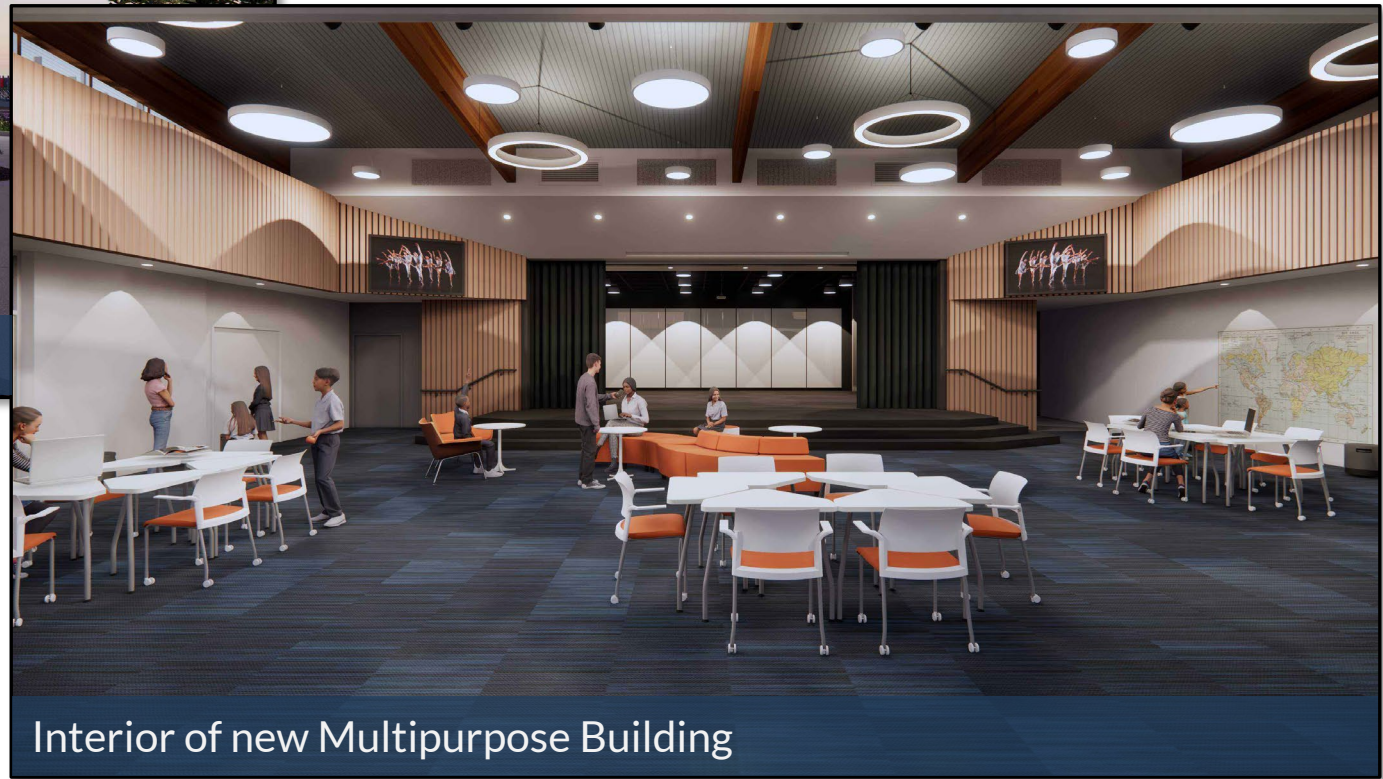


SANTIAGO HILLS ES (New MPR Building/Nutrition Services Exp.)

3



Exterior of new Multipurpose Building



Interior of new Multipurpose Building

Measure E
Series 3 Project



SANTIAGO HILLS ES (Innovation Lab/Shade Structure)



Interior of new Innovation Lab



Proposed Nutrition Service canopy

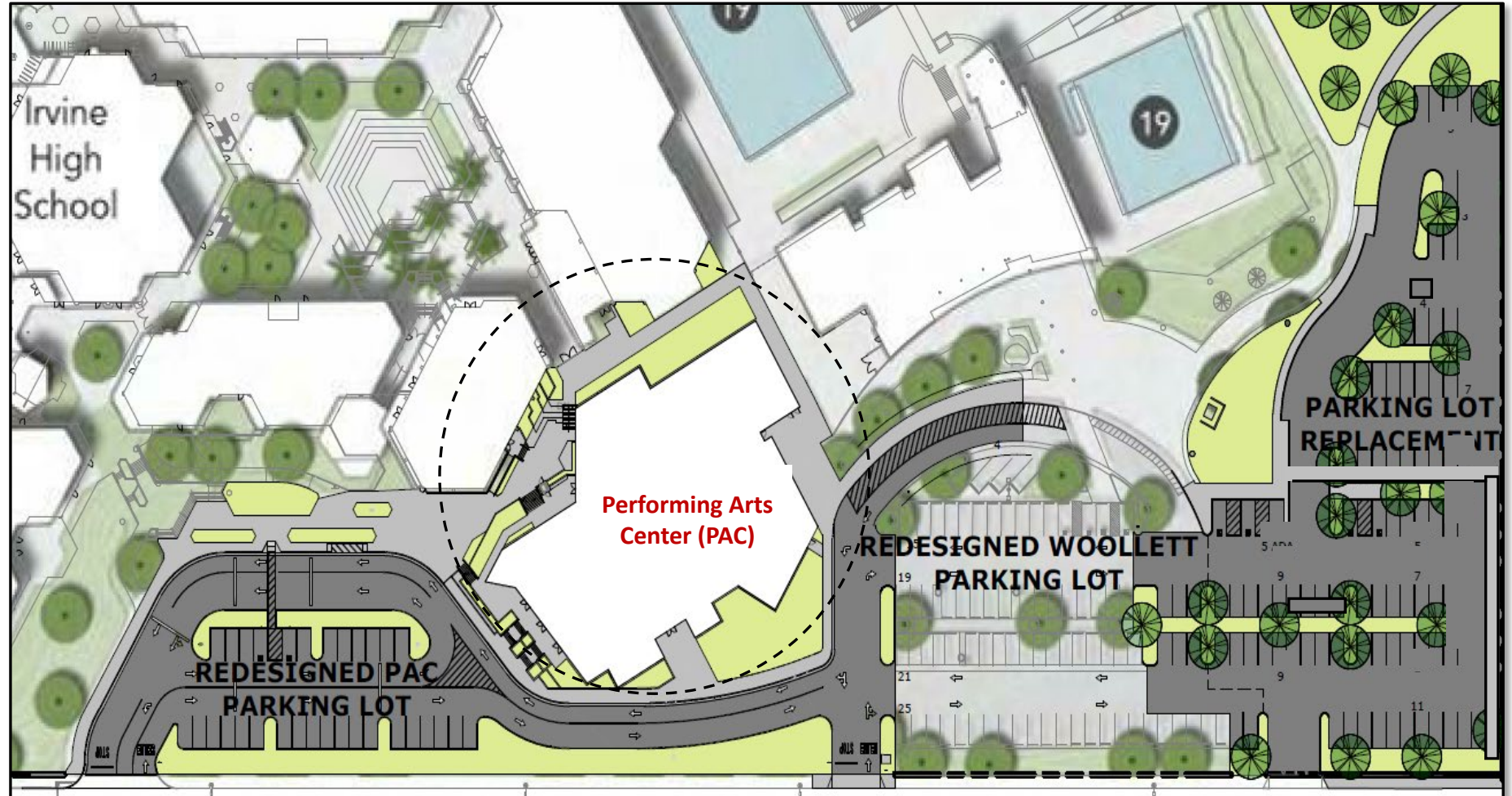
**Measure E
Series 3 Project**



IRVINE HS (Plan View)

Scope of Work

- Replacement Parking Lot
- Modifications to drop-off
- Redesigned parking lots
- New Performing Arts Center
 - Single level seating
 - 650 seats
 - Scene shop
 - Orchestra pit
 - Lobby
 - Black Box Theater



**Measure E
Series 3 Project**



IRVINE HS (New Performing Arts Center)

3



Increment No. 1: Ground improvements



Increment No. 1: Ground improvements

Measure E
Series 3 Project



IRVINE HS (New Performing Arts Center)

3



Street View (Walnut Avenue) of new Performing Arts Center



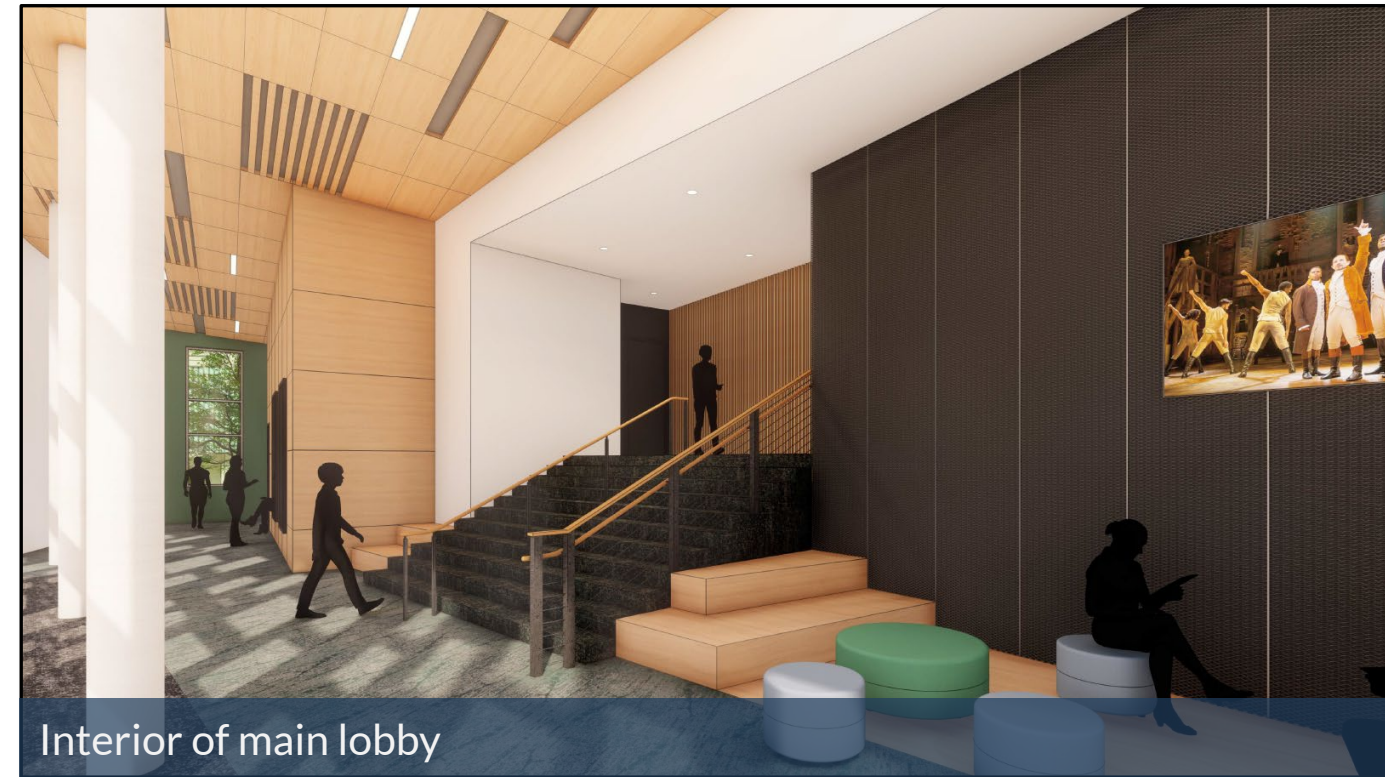
Performance courtyard of new Performing Arts Center

**Measure E
Series 3 Project**



IRVINE HS (New Performing Arts Center)

3



Interior of main lobby



Interior of house seating and stage

**Measure E
Series 3 Project**



QUESTIONS

NEXT MEETING

April 24, 2023 at 6:30pm

Location: to be determined