



CELEBRATING
EDUCATIONAL
EXCELLENCE

1972 - 2022

MEASURE E

Citizens Oversight Committee Quarterly Meeting

July 25, 2022

Board of Education

Ira Glasky, President

Paul Bokota

Lauren Brooks

Sharon Wallin

Cyril Yu



AGENDA

Budget

State Funding

Schedule

Project Updates

- Series 1
- Series 2
- Series 3
- Augmented Funds to Accelerate Projects



BUDGET

PROGRAM BUDGET

MEASURE E

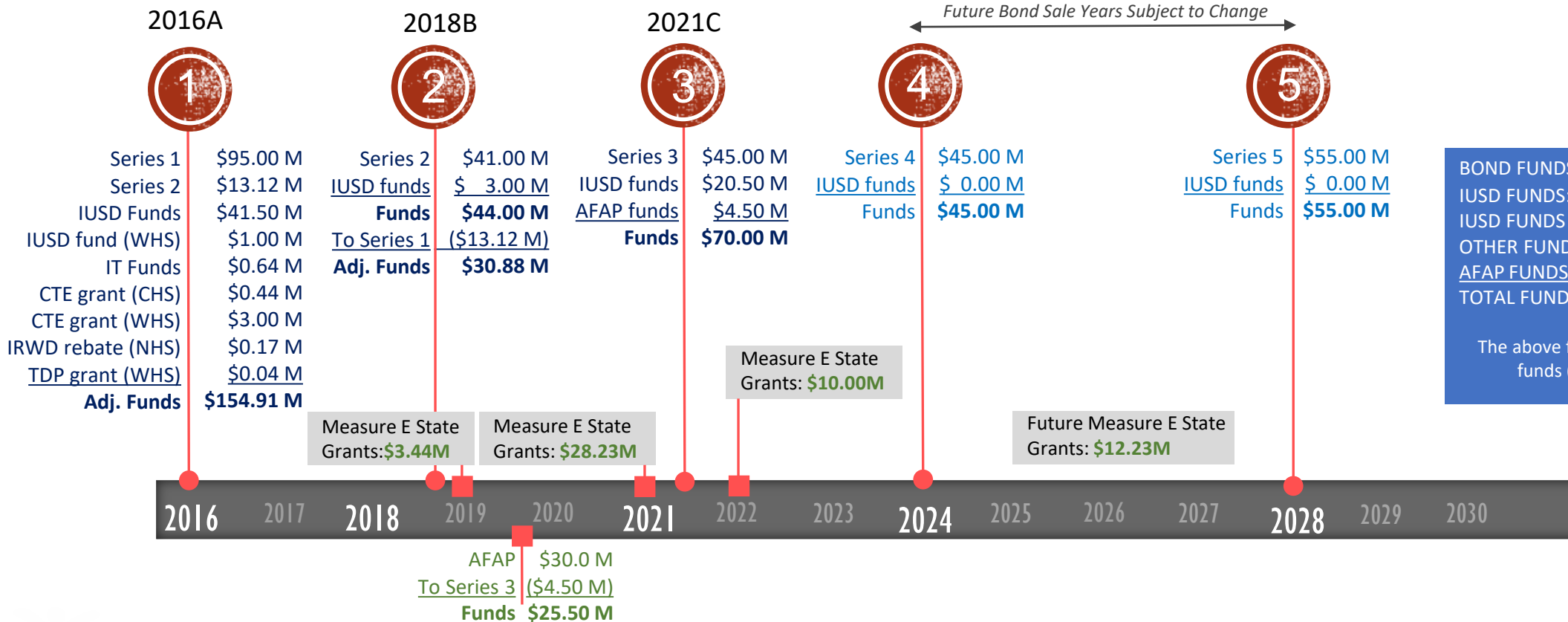
REVISED BOND SERIES

- Series 1 funds received October 26, 2016
- Series 2 funds received September 13, 2018
- Series 3 funds received April 7, 2021

<u>ORIGINAL</u>		<u>ISSUED/PROPOSED</u>	
2016 (Series 1)	\$ 95.0M	2016 (Series 1)	\$ 95.0M
2021 (Series 2)	\$ 51.9M	2018 (Series 2)	\$ 41.0M
2025 (Series 3)	\$ 49.4M	2021 (Series 3)	\$ 45.0M
2029 (Series 4)	\$ 54.5M	2024 (Series 4)	\$ 45.0M
<u>TOTAL</u>	<u>\$ 250.8M *</u>	<u>2028 (Series 5)</u>	<u>\$ 55.0M</u>
		TOTAL	\$281.0M*

*Maximum Bond Capacity is \$319.0M

MEASURE E FUNDING TIMELINE



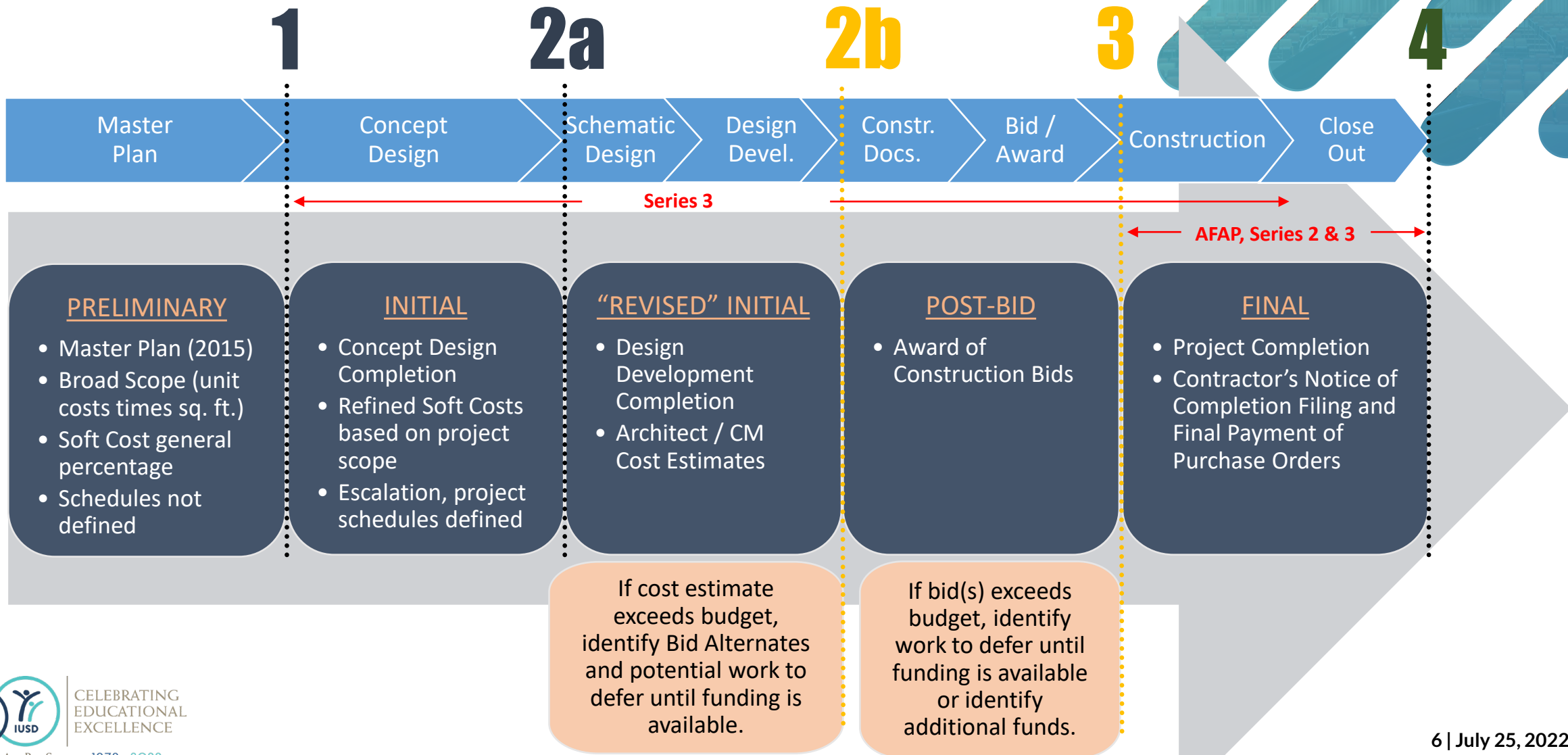
BOND FUNDS:	\$ 281.0 M
IUSD FUNDS:	\$ 65.0 M
IUSD FUNDS (WHS):	\$ 1.0 M
OTHER FUNDS:	\$ 4.3 M
AFAP FUNDS:	\$ 30.0 M
TOTAL FUNDS:	\$ 381.3 M

The above figures exclude State grant funds (received and future).

Augmented Funds to Accelerate Projects (AFAP)

MEASURE E

BUDGET VERSIONS



MEASURE E

UPCOMING BUDGETARY CHALLENGES

Projects Affected

- Irvine HS Performing Arts Center (Increment 2) – Bids in fall/winter 2022
- Culverdale ES, Greentree ES, and Santiago Hills ES Expansions – Bids in spring/summer 2023

Impacts

- Cost escalation on materials at a 35-year high (concrete, steel, lumber, aluminum, roofing)
- Limited material inventory (less warehoused materials)
- Supply chain issues (delayed material deliveries and longer lead times on orders)
- Reduction in construction workforce (industry wide)
- Difficulty in retaining professional services staff (architects and construction managers)

What are we doing?

- Monitoring the economy
- Developing bid alternates for upcoming projects
- Making budget adjustments, as necessary

MEASURE E

BUDGET SUMMARY

Series	Bond Sale Year	Funds Available								Total Funds Authorized	Project Expenditures or Budgeted	Funds Available / (Deficit)
		[A]	[B]	[C]	[D]	[E]	[F]	[G]	[H]	[I]	[J]	[K]
		Bonds	District			State Grants Received (Fund 35)	Other Grants / Rebates	Other Funds	Committed Funds to AFAP (Fund 35)	[Sum of A thru H]		[I-J]
Fund 01 (CFD 86-1)	Fund 25		Fund 40									
Series 1	2016	\$ 108,115,495	\$ 23,000,000	\$ 13,500,000	\$ 6,000,000	\$ 3,439,400	\$ 219,031	\$ 643,875	\$ -	\$ 154,917,801	\$ 151,505,574	\$ 3,412,227
Series 2	2018	\$ 27,884,505	\$ -	\$ -	\$ 3,000,000	\$ -	\$ -	\$ -	\$ -	\$ 30,884,505	\$ 32,290,186	\$ (1,405,681)
Series 3	2021	\$ 45,000,000	\$ -	\$ -	\$ 20,500,000	\$ -	\$ -	\$ -	\$ 4,500,000	\$ 70,000,000	\$ 71,563,206	\$ (1,563,206)
Series 4	2024	\$ 45,000,000	\$ -	\$ -	\$ -	\$ -	\$ -	\$ -	\$ -	\$ 45,000,000	\$ 38,600,000	\$ 6,400,000
Series 5	2028	\$ 55,000,000	\$ -	\$ -	\$ -	\$ -	\$ -	\$ -	\$ -	\$ 55,000,000	\$ 31,200,000	\$ 23,800,000
SUBTOTALS		\$ 281,000,000	\$ 23,000,000	\$ 13,500,000	\$ 29,500,000	\$ 3,439,400	\$ 219,031	\$ 643,875	\$ 4,500,000	\$ 355,802,306	\$ 325,158,966	\$ 30,643,340
AFAP	2019	\$ -	\$ -	\$ -	\$ -	\$ -	\$ -	\$ -	\$ 25,500,000	\$ 25,500,000	\$ 23,321,759	\$ 2,178,241
TOTALS		\$ 281,000,000	\$ 23,000,000	\$ 13,500,000	\$ 29,500,000	\$ 3,439,400	\$ 219,031	\$ 643,875	\$ 30,000,000	\$ 381,302,306	\$ 348,480,725	\$ 32,821,581

MEASURE E

POST-BID BUDGET vs FINAL BUDGET

Completed Projects		Post-Bid Budget	Final Budget	Post-Bid & Final Budget Variance
1	Bonita Canyon ES - Enclose Classrooms	\$ 912,184	\$ 868,451	\$ 43,733
2	College Park ES - Enclose Classrooms	\$ 3,424,255	\$ 3,248,271	\$ 175,984
3	Creekside HS - Expansion	\$ 5,032,263	\$ 4,843,117	\$ 189,146
4	Culverdale ES - Enclose Classrooms	\$ 1,633,772	\$ 1,601,117	\$ 32,655
5	Eastshore ES - Expansion	\$ 6,132,736	\$ 6,080,570	\$ 52,166
6	Greentree ES - Enclose Classrooms	\$ 2,042,302	\$ 1,913,892	\$ 128,410
7	Irvine HS - Modernization	\$ 7,143,636	\$ 6,922,265	\$ 221,371
8	Lakeside MS - Science Labs	\$ 2,972,572	\$ 2,892,181	\$ 80,391
9	Northwood HS - Field Improvements	\$ 3,815,212	\$ 3,692,908	\$ 122,304
10	Rancho San Joaquin MS - Science Labs	\$ 5,680,277	\$ 5,289,332	\$ 390,945
11	Santiago Hills ES - Enclose Classrooms	\$ 1,498,668	\$ 1,427,186	\$ 71,482
12	Sierra Vista MS - Science Lab	\$ 4,871,155	\$ 4,588,557	\$ 282,598
13	South Lake MS - Science Labs	\$ 3,759,011	\$ 3,557,805	\$ 201,206

14	Stone Creek ES - Enclose Classrooms/Expansion	\$ 4,423,481	\$ 4,295,488	\$ 127,993
15	University HS - Modernization	\$ 5,002,422	\$ 4,628,058	\$ 374,364
16	Venado MS - Science Labs	\$ 5,318,603	\$ 5,184,530	\$ 134,073
17	Westwood Basics Interim	\$ 509,966	\$ 411,938	\$ 98,028
18	Westpark ES - Modernization	\$ 10,519,152	\$ 10,634,410	\$ (115,258)
19	Brywood ES - Modernization	\$ 10,678,948	\$ 11,306,486	\$ (627,538)
20	Brywood ES - Music Classroom	\$ 3,073,480	\$ 2,919,341	\$ 154,139
21	Meadow Park ES - Modernization	\$ 13,056,650	\$ 13,043,246	\$ 13,404
22	Meadow Park ES - Music Classroom	\$ 3,122,369	\$ 2,984,289	\$ 138,080
23	Springbrook ES - Modernization	\$ 12,105,298	\$ 11,965,170	\$ 140,128
24	Springbrook ES - Music Classroom	\$ 3,561,804	\$ 3,318,008	\$ 243,796
25	Woodbridge HS - Field Improvements	\$ 2,974,100	\$ 3,163,725	\$ (189,625)
26	Woodbridge HS - Performing Arts Center	\$ 27,120,257	\$ 28,881,980	\$ (1,761,723)
27	El Camino School - Interim Campus	\$ 1,807,102	\$ 1,260,683	\$ 546,419
TOTALS		\$152,191,674	\$150,923,004	\$ 1,268,670

Percentage below Post-Bid Budget

0.83%

9 | July 25, 2022



BUDGET

CHANGE ORDERS



MEASURE E CHANGE ORDERS

“A ‘change order’ refers to an official change of any kind in the original scope of work or terms of a construction contract agreed to by the owner, contractor, and project designer.” Associated General Contractors of America

Measure E construction change orders are often the result of (1) District changes, (2) Design revisions, (3) Unforeseen conditions, and (4) Building code clarifications.

Final Change Order Percentages (All Series)					
School		Original Contract	Final Contract	Change Orders	Change Order %
1	Series 1 (complete)	\$ 113,606,920	\$ 113,852,871	\$ 245,951	0.22%
2	Series 2 (in progress)	\$ 9,346,452	\$ 9,117,793	\$ (228,659)	-2.45%
TOTALS		\$ 122,953,372	\$ 122,970,664	\$ 17,292	0.01%

MEASURE E

FINAL CHANGE ORDERS (SERIES 1)

Final Change Order Percentages (Series 1)

School	Original Contract	Final Contract	Change Orders	Change Order %	School	Original Contract	Final Contract	Change Orders	Change Order %
1 Bonita Canyon ES	\$ 687,833	\$ 661,920	\$ (25,913)	-3.77%	14 Westpark ES	\$ 7,535,025	\$ 7,612,852	\$ 77,827	1.03%
2 College Park ES	\$ 1,947,472	\$ 1,997,707	\$ 50,235	2.58%	15 Brywood ES - Mod	\$ 8,022,047	\$ 8,634,679	\$ 612,632	7.64%
3 Culverdale ES	\$ 1,004,045	\$ 1,020,602	\$ 16,557	1.65%	16 Brywood ES - Music	\$ 2,842,214	\$ 2,773,341	\$ (68,873)	-2.42%
4 Greentree ES	\$ 1,263,711	\$ 1,240,335	\$ (23,376)	-1.85%	17 Meadow Park ES - Mod	\$ 9,640,387	\$ 9,856,858	\$ 216,471	2.25%
5 Santiago Hills ES	\$ 1,053,407	\$ 1,050,915	\$ (2,492)	-0.24%	18 Meadow Park ES - Music	\$ 2,889,679	\$ 2,838,289	\$ (51,390)	-1.78%
6 Stone Creek ES	\$ 3,155,560	\$ 3,113,229	\$ (42,331)	-1.34%	19 Eastshore ES	\$ 4,522,529	\$ 4,597,990	\$ 75,461	1.67%
7 Northwood HS	\$ 2,946,419	\$ 3,055,203	\$ 108,784	3.69%	20 Venado MS	\$ 3,798,615	\$ 3,813,274	\$ 14,659	0.39%
8 Irvine HS	\$ 4,704,255	\$ 4,843,227	\$ 138,972	2.95%	21 Creekside HS	\$ 3,681,144	\$ 3,598,072	\$ (83,072)	-2.26%
9 University HS	\$ 3,533,004	\$ 3,519,126	\$ (13,878)	-0.39%	22 Springbrook ES- Mod	\$ 8,110,543	\$ 8,413,410	\$ 302,867	3.73%
10 Sierra Vista MS	\$ 3,643,560	\$ 3,526,896	\$ (116,664)	-3.20%	23 Springbrook ES- Music	\$ 3,387,188	\$ 3,245,008	\$ (142,180)	-4.20%
11 South Lake MS	\$ 2,753,376	\$ 2,688,937	\$ (64,439)	-2.34%	24 Woodbridge HS-Field Imp	\$ 2,568,204	\$ 2,651,706	\$ 83,502	3.25%
12 Lakeside MS	\$ 2,279,702	\$ 2,214,866	\$ (64,836)	-2.84%	25 Woodbridge HS-PAC	\$ 23,435,033	\$ 22,782,163	\$ (652,870)	-2.79%
13 Rancho San Joaquin MS	\$ 4,201,968	\$ 4,102,266	\$ (99,702)	-2.37%	TOTALS	\$ 113,606,920	\$ 113,852,871	\$ 245,951	0.22%

MEASURE E

FINAL CHANGE ORDERS (SERIES 2)

Final Change Order Percentages (Series 2)					
School		Original Contract	Final Contract	Change Orders	Change Order %
1	Bonita Canyon ES	\$ 5,223,926	\$ 5,197,335	\$ (26,591)	-0.51%
2	Turtle Rock ES	\$ 4,122,526	\$ 3,920,458	\$ (202,068)	-4.90%
TOTALS		\$ 9,346,452	\$ 9,117,793	\$ (228,659)	-2.45%



BUDGET

UPDATE BY SERIES



MEASURE E

SERIES 1 UPDATE

Adjustment (10/26/2016)	
Bond Series 1	\$ 95,000,000
IUSD Funds	\$ 29,600,000
IUSD Funds 1st Adj.	\$ 6,800,000
FUNDS	\$ 131,400,000

Adjustment (06/05/2018)	
Bond Series 1	\$ 95,000,000
IUSD Funds	\$ 29,600,000
IUSD Funds 1st Adj.	\$ 6,800,000
IUSD Funds 2nd Adj.	\$ 5,100,000
IUSD IT Infrastructure	\$ 643,875
CTE Grant (CHS)	\$ 348,920
Bond Series 2	\$ 13,115,495
FUNDS Approved	\$ 150,608,290

Current (07/25/2022)	
Bond Series 1	\$ 95,000,000
IUSD Funds	\$ 29,600,000
IUSD Funds 1st Adj.	\$ 6,800,000
IUSD Funds 2nd Adj.	\$ 5,100,000
IUSD IT Infrastructure	\$ 643,875
CTE Grant (CHS)	\$ 439,400
Bond Series 2	\$ 13,115,495
IRWD Rebate (NHS)	\$ 174,591
Fund 40 to WHS Field	\$ 1,000,000
CTE Grant (WHS)	\$ 3,000,000
TDP Grant (WHS)	\$ 44,440
FUNDS Available	\$ 154,917,801
CURRENT EXPENDITURES	\$ 151,505,574
SURPLUS FUNDS	\$ 3,412,227

MEASURE E

SERIES 2 UPDATE

Initial Budget (01/19/2019)		Adjustment (12/01/2020)		Current (07/25/2022)	
Bond Series 2	\$ 41,000,000	Bond Series 2	\$ 41,000,000	Bond Series 2	\$ 41,000,000
Bond Funds to Series 1	\$ (13,115,495)	Bond Funds to Series 1	\$ (13,115,495)	Bond Funds to Series 1	\$ (13,115,495)
IUSD Funds	\$ -	IUSD Funds	\$ 3,000,000	IUSD Funds	\$ 3,000,000
FUNDS \$ 27,884,505		FUNDS Approved \$ 30,884,505		FUNDS Approved \$ 30,884,505	
				PROJECT BUDGETS \$ 32,290,186	
				DEFICIT \$ (1,405,681)	
				Series 1 Surplus \$ 3,412,227	
				SURPLUS FUNDS \$ 2,006,546	

MEASURE E

SERIES 3 UPDATE

Initial Budget (01/06/2021)		Adjustment (06/02/2021)		Current (07/25/2022)	
Bond Series 3	\$ 30,800,000	Bond Series 3	\$ 45,000,000	Bond Series 3	\$ 45,000,000
IUSD Funds	\$ 23,500,000	IUSD Funds	\$ 23,500,000	IUSD Funds	\$ 23,500,000
IUSD Funds to Series 2	\$ (3,000,000)	IUSD Funds to Series 2	\$ (3,000,000)	IUSD Funds to Series 2	\$ (3,000,000)
FUNDS	\$ 51,300,000	AFAP Made Available	\$ 4,500,000	AFAP Made Available	\$ 4,500,000
		FUNDS Approved	\$ 70,000,000	FUNDS Approved	\$ 70,000,000
				PROJECT BUDGETS	\$ 71,563,206
				DEFICIT	\$ (1,563,206)
				Series 2 Surplus	\$ 2,006,546
				SURPLUS FUNDS	\$ 443,340

MEASURE E AFAP UPDATE

Initial Budget (11/19/2019)

Fund 35	\$	30,000,000
FUNDS		\$ 30,000,000
CURRENT BUDGET		\$ 26,474,790
SURPLUS FUNDS*		\$ 3,525,210

Current Post-Bid Budget (07/25/2022)

Fund 35	\$	30,000,000
Funds Made Available Series 3	\$	(4,500,000)
FUNDS		\$ 25,500,000
CURRENT BUDGET		\$ 25,500,000
SURPLUS FUNDS*		\$ -

* Any surplus funds will go back to Fund 35, not into Measure E funds.



MEASURE E **STATE FUNDING**



SCHOOL FACILITY PROGRAM

- **New Construction: State Grant Eligibility**
 - New construction (entire school or single/multiple facilities)
 - Grant is based on number of pupils assigned to project
 - Funding based on total project cost: District contributes 50% and State contributes 50%
- **Modernization: State Grant Eligibility**
 - Buildings 25 years or older and Relocatable Buildings 20 years or older
 - Grant is based on number of pupils assigned to project
 - Funding based on total project cost: District contributes 40% and State contributes 60%
- **Career Technical Education (CTE) Facilities Program: State Grant Eligibility**
 - Project must be within one of 15 CTE sectors to be eligible
 - Grant is based a point system and evaluation by the State
 - Funding based on dollar amount requested: District contributes 50% and State contributes 50%



State Grants Received for Measure E

➤ State Grants Received for Measure E from Proposition 51 Bond funds

The State grants funds are through the State School Facility Program currently under Proposition 51.

STATE FUNDED PROJECTS (Prop. 51)	
Site Name	Amount Received
Creekside High School (Series 1 CTEFP: Const. Tech.)	\$439,400
Woodbridge High School (Series 1 CTEFP: Perf. Arts)	\$3,000,000
College Park ES (Series 1: MOD)	\$527,914
Culverdale ES (Series 1: MOD)	\$784,679
Santiago Hills ES (Series 1: MOD)	\$625,105
Stone Creek ES (Series 1: MOD)	\$896,562
Stone Creek ES (Series 1: NC)	\$727,603
Irvine HS (Series 1: MOD)	\$4,256,129
University HS (Series 1: MOD)	\$735,286
Creekside HS (Series 1: NC)	\$1,166,945
Sierra Vista MS (Series 1: NC)	\$1,671,605
South Lake MS (Series 1: NC)	\$919,005
Eastshore ES (Series 1: MOD)	\$757,980
Eastshore ES (Series 1: NC)	\$833,174
Venado MS (Series 1: NC)	\$2,249,063
Rancho San Joaquin MS (Series 1: MOD)	\$570,899
Rancho San Joaquin MS (Series 1: NC)	\$1,176,896
Springbrook ES (Series 1: MOD)	\$3,472,248
Westpark ES (Series 1: MOD)	\$3,729,015
Brywood ES (Series 1: MOD)	\$3,133,957
Total State Funds Received	\$ 31,673,465



Step 1a: “Acknowledged” List

When no State Funding is available

- Project applications submitted beyond the Proposition 51 Bond Authority
- Subject to IUSD Board Resolution acknowledging exhaustion of funds
- Waiting for future State Bond (potentially in 2022)

Step 1b: “Workload” List

When State Funding is available

- Project applications submitted to OPSC, waiting for staff review
- Anticipate funding under Proposition 51

STEP 1a: ACKNOWLEDGED LIST

Site Name	Estimated Funding
Bonita Canyon ES (Series 1: MOD)	\$152,700
Greentree ES (Series 1: MOD)	\$249,000
Lakeside MS (Series 1: MOD)	\$435,300
Turtle Rock ES (Series 2: NC)	\$1,392,800
Northwood ES (Series 2: NC)	\$1,304,500
South Lake MS (Series 3A: NC)	\$447,200
South Lake MS (Series 3A: MOD)	\$5,557,000
Oak Creek ES (Series AFAP: NC)	\$469,100
Total State Funding Acknowledged	\$10,007,600

STEP 1b: OPSC WORKLOAD LIST

Site Name	Anticipated Funding
Total State Funding Anticipated	\$0



Step 2: “Unfunded (Lack of AB 55)” List

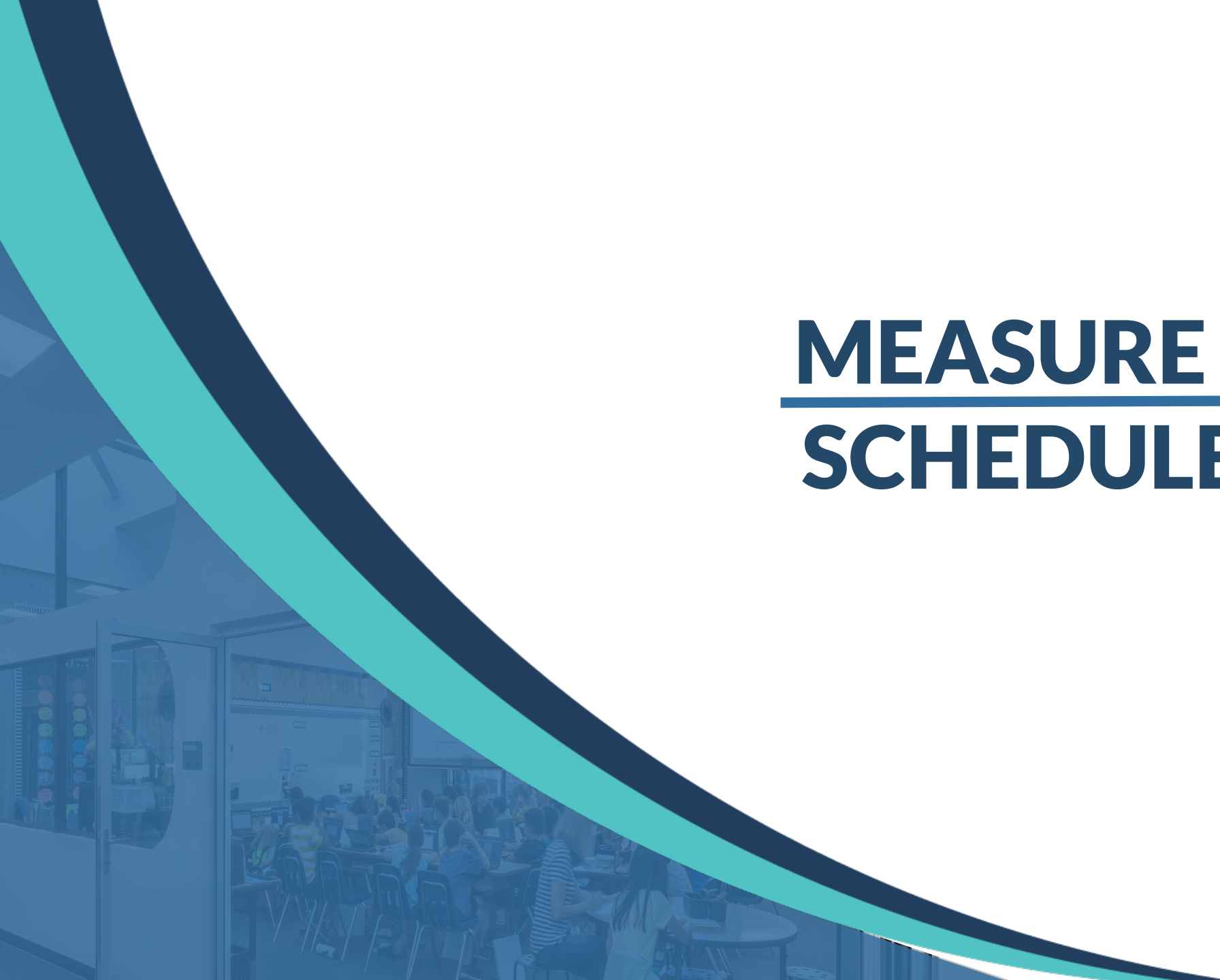
- Project applications have been fully reviewed by OPSC staff
- Subject to bi-annual Priority Funding Letter

Step 3: “Apportioned” List

- Project applications that were previously on the Unfunded (Lack of AB 55) list
- Submitted bi-annual Priority Funding Letter
- Shovel-Ready within 90 days of moving to Apportioned list
- Ready for fund Release request funding under Proposition 51

STEP 2: OPSC UNFUNDED LIST	
Site Name	Amount Approved
Total State Funded Applications	\$0

STEP 3: APPORTIONED LIST	
Site Name	Amount Approved
Woodbridge HS (Series 1: NC)	\$3,219,613
Springbrook ES (Series 1: NC)	\$1,211,516
Meadow Park ES (Series 1: NC)	\$1,358,675
Meadow Park ES (Series 1: MOD)	\$3,529,201
Brywood ES (Series 1: NC)	\$1,343,490
University Park ES (Series 2: MOD)	\$1,565,006
Total State Funded Applications	\$12,227,501



MEASURE E **SCHEDULE**

CURRENT SCHEDULE (Series 2, Series 3 & AFAP)



Northwood ES (Series 2) / South Lake MS (Series 3) / Canyon View ES, Deerfield ES, Oak Creek ES, & Plaza Vista School (AFAP)

Construction Summer 2022

Woodbridge HS (Series 3)

Scoping Bid Procure **Construction** Summer 2023

Irvine HS - Increment No. 1 Deep Foundation Work (Series 3)


Construction Winter 2023

Irvine HS - Increment No. 2 Building/Site Improvements (Series 3)

Pending Incr. No. 1 / DSA Bid **Construction** Summer 2024

Culverdale ES, Greentree ES, and Santiago Hills ES (Series 3)

Design / DSA Bid **Construction** Summer 2024



MEASURE E

PROJECT UPDATES

NORTHWOOD ES (New Classroom Building)



Relocation of ICCP relocatable classroom building



Restoration of playfield (hydroseed)

SOUTH LAKE MS (Modernization)



New control booth in Multipurpose Room



New connection between MPR and music classroom

SOUTH LAKE MS (Expansion)



Exterior of music classroom expansion



Interior of music classroom expansion



- **Building J and Building K (two-story buildings)**
 - New heat pumps in classrooms and on roof (40)
 - New exhaust fans (11), new cooling tower (1), new boiler (1), and suction pumps (2)
 - New plumbing for units and equipment
 - New ductwork and ductwork replacement in select areas
 - Construction scheduled for summer 2023 and completed by start of 2023/2024 school year
 - Update HVAC system to current code - more energy efficient and improve classroom environment
- **Phase 1 of Building J and Building K Modernization (HVAC only)**
 - Phase 1 will focus on replacing HVAC system installed with original construction over 30 years ago
 - Phase 2 will focus on modernizing the interior of buildings in Series 5

Series 3 Project



CULVERDALE ES (New MPR Building/Nutrition Services Exp.)



Exterior of new Multipurpose Building



Interior of new Multipurpose Building

CULVERDALE ES (Proposed Site Plan)



Aerial rendering of final site configuration

Series 3 Project



GREENTREE ES (New MPR Building/Nutrition Services Exp.)



Exterior of new Multipurpose Building



Exterior of new Multipurpose Building

Series 3 Project



CELEBRATING
EDUCATIONAL
EXCELLENCE

1972 - 2022

GREENTREE ES (New MPR Building/Nutrition Services Exp.)



Interior of new Multipurpose Building



Interior of new Multipurpose Building

GREENTREE ES (PLANNING)

3



Interior of new Innovation Lab



Interior of new Innovation Lab

GREENTREE ES (PLANNING)



Aerial View of new Multipurpose Building

Series 3 Project

SANTIAGO HILLS ES (New MPR Building/Nutrition Services Exp.)



Exterior of new Multipurpose Building



Exterior of new Multipurpose Building

Series 3 Project



CELEBRATING
EDUCATIONAL
EXCELLENCE

1972 - 2022

SANTIAGO HILLS ES (New MPR Building/Nutrition Services Exp.)



Interior of new Multipurpose Building



Interior of new Multipurpose Building

Series 3 Project



SANTIAGO HILLS ES (PLANNING)

3



Interior of new Innovation Lab



Proposed Nutrition Service canopy

Series 3 Project



SANTIAGO HILLS ES (PLANNING)

3



Aerial View of New Multipurpose Building

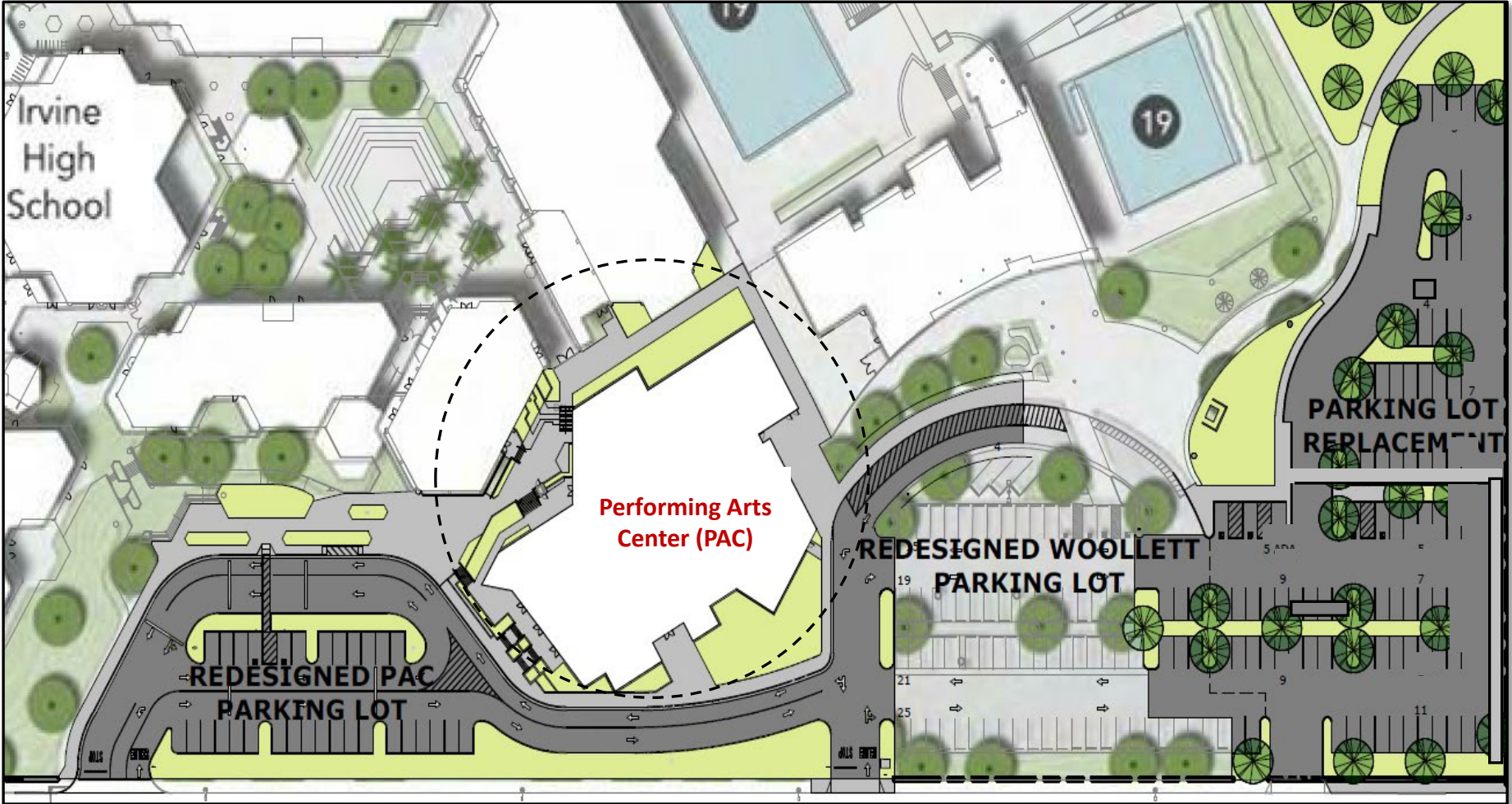
Series 3 Project





Scope of Work

- Replacement Parking Lot
- Modifications to drop-off
- Redesigned parking lots
- New Performing Arts Center
 - Single level seating
 - 650 seats
 - Scene shop
 - Orchestra pit
 - Lobby
 - Black Box Theater



IRVINE HS (New Performing Arts Center)



Relocation and installation of underground utilities



Relocation and installation of underground utilities

Series 3 Project



CELEBRATING
EDUCATIONAL
EXCELLENCE

YEARS 1972 - 2022



IRVINE HS (New Performing Arts Center)



Street View (Walnut Avenue) of new Performing Arts Center



Performance courtyard of new Performing Arts Center



IRVINE HS (New Performing Arts Center)

3



Main lobby



Entrance into Black Box Theater

Series 3 Project



CELEBRATING
EDUCATIONAL
EXCELLENCE

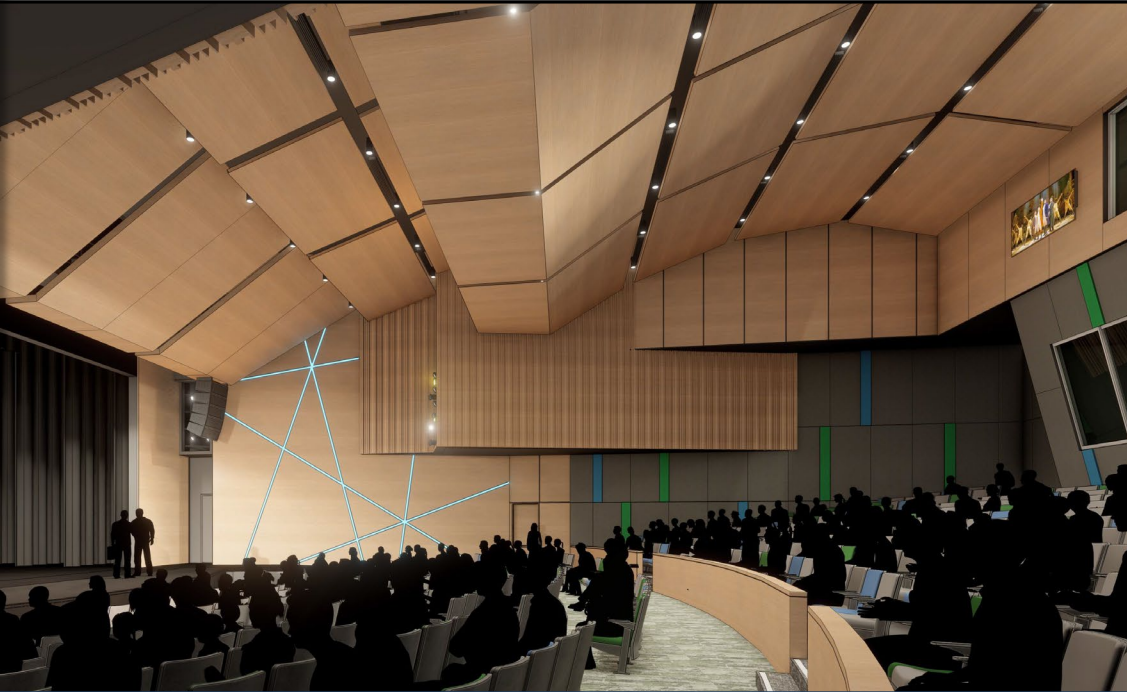
1972 - 2022



IRVINE HS (New Performing Arts Center)



House seating and stage



House seating and stage

Series 3 Project



CELEBRATING
EDUCATIONAL
EXCELLENCE

1972 - 2022

CANYON VIEW ES (Innovation /Design Labs)



Outside of Innovation Lab



Inside of Design Lab

Accelerated Funds to Augment Projects



OAK CREEK ES (Lunch Shelter)



Lunch shelter

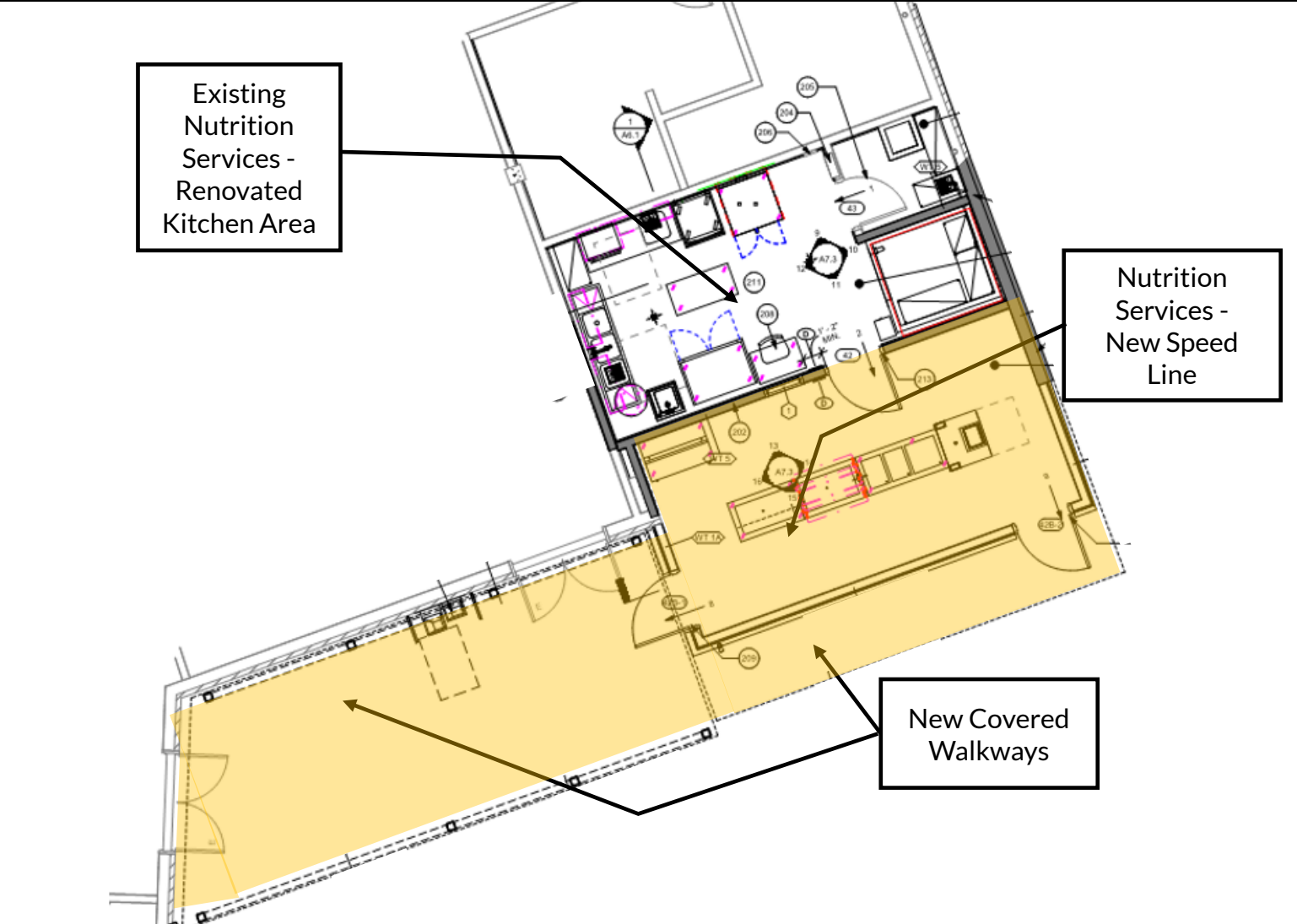


Lunch shelter adjacent to Nutrition Services

Accelerated Funds to Augment Projects



DEERFIELD ES (Nutrition Services Expansion)



Drawing of expanded Nutrition Services

Accelerated Funds to Augment Projects



DEERFIELD ES (Nutrition Services Expansion)



Expansion and site improvements



New speed line and entrance into food service

Accelerated Funds to Augment Projects



PLAZA VISTA SCHOOL (Kindergarten Renovation)



Kindergarten classroom renovation



New kindergarten classroom (former staff lounge)

Accelerated Funds to Augment Projects



QUESTIONS

NEXT MEETING

October 24, 2022 at 6:30pm

Location: Northwood Elementary School