

IRVINEUSD

Heritage Fields 2nd School

July 12, 2016

Board of Education

Paul Bokota, President

Lauren Brooks

Ira Glasky

Michael Parham

Sharon Wallin



Agenda

- Projected Enrollment
- Projected Timeline
- Option A Considerations
- Option B Considerations
- Recommendation



Projected Enrollment

Heritage Fields 2nd School

Developer Geographic Projected Enrollment (Updated May 6, 2016)

“Notwithstanding anything herein to the contrary, the District may elect, with the reasonable approval of Heritage, to convert the second K–8 School to a District elementary school (K–6) facility, and to accommodate Project Students in grades 7–8 in existing District middle school facilities at no additional cost to Heritage.”

– Section 2.15 of Heritage Fields School Mitigation Agreement

Grades K through 8th

	2015 (Actual)	2016 (1 Year Projection)	2017	2018	2019	2020 (5 Year Projection)	2025 (10 Year Projection)
Beacon Park K-8 Capacity	-	1,000	1,000	1,000	1,000	1,000	1,000
Heritage Fields # 2 K-8 Capacity	-	-	-	-	1,000	1,000	1,000
K-8 Projection	200	306	551	864	1,232	1,609	1,985
Open Seats	-200	649	449	136	768	391	15



Heritage Fields 2nd School

Moderate Geographic Projected Enrollment (**Updated May 6, 2016**)

Grades TK through 8th

	2015 (Actual)	2016 (1 Year Projection)	2017	2018	2019	2020 (5 Year Projection)	2025 (10 Year Projection)
Beacon Park K-8 Capacity	-	1,000	1,000	1,000	1,000	1,000	1,000
Heritage Fields # 2 K-8 Capacity	-	-	-	-	1,000	1,000	1,000
K-8 Projection	200	339	654	1,074	1,581	2,093	2,689
Open Seats	-200	661	346	-74	419	-93	-689



Heritage Fields 2nd School

Middle School Enrollment Projections

Heritage Fields Projection	2015 (Actual)	2016 (1 Year Projection)	2017	2018	2019	2020 (5 Year Projection)	2025 (10 Year Projection)
Developer Projection	68	93	147	212	287	359	472
Moderate Projection	68	95	156	237	329	425	626
Jeffrey Trail MS Moderate Projection	997	1,064	1,124	1,209	1,331	1,422	1,641
Capacity	1,200	1,200	1,200	1,200	1,200	1,200	1,200
Open Seats	203	136	76	-9	-131	-222	-441
Sierra Vista MS Moderate Projection	857	872	985	904	909	920	989
Capacity	939	939	939	939	939	939	939
Open Seats	82	67	44	35	30	19	-50



Heritage Fields 2nd School

K-6 or K-8

- No capacity at existing middle schools to accommodate 472 – 626 additional middle school students from Heritage Fields Communities
- Do not generate enough students for a comprehensive middle school enrollment of 900–1200 students
- No provisions to fund a comprehensive middle school

Heritage Fields 2nd School

K-6 or K-8

School Grade Configuration Recommendation:

- Design school for grades Kindergarten through 8th grade
- Design gymnasium facility and permanent daycare facility

Projected Timeline

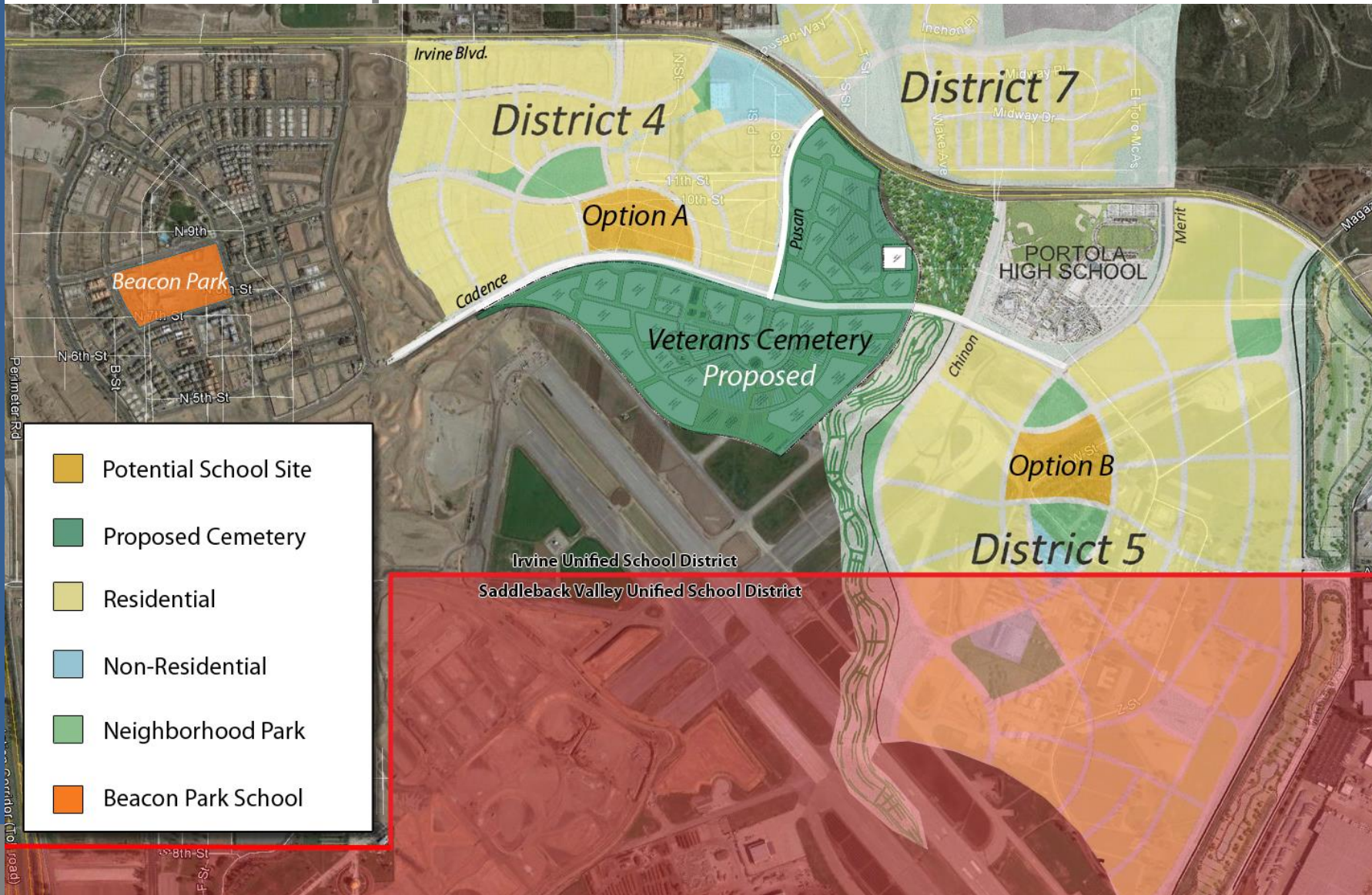
Heritage Fields 2nd School

Projected Timeline



Heritage Fields 2nd School

Site Location Map



Option A



Irvine Blvd.

Residential

Non-Residential

District 4

Park

Residential

Option A

Residential

Cadence

Pusan

Veterans Cemetery
Proposed

Chinon

Heritage Fields 2nd School

Site Considerations Option A

- Proposed school site rough graded, minimal work to obtain final grade
- District 4 building pads rough graded and utilities are being installed
- Street (Cadence) south of school site has been constructed
- Utilities are installed in street (Cadence)
- Proposed school site less than one mile from Beacon Park School
- Adjacencies to the proposed school site:
 - Tract homes planned (west and east)
 - Park planned (north)
 - Proposed Veterans cemetery – city property (south)



Option B



PORTOLA
HIGH SCHOOL

Merit

Chinon

Park

Residential

Residential

Option B

Park

District 5

Heritage Fields 2nd School

Site Considerations Option B

- Proposed school site requires relocation of tree boxes, construction trailers
- District 5 has not started demolition or rough grade
- Streets not constructed
- Utilities not installed
- Proposed school site less than two miles from Beacon Park School
- Distance from Portola High School approximately 450 yards
- Adjacencies to the proposed school site:
 - Tract homes planned (west, south, and east)
 - Park planned (north and south)



Heritage Fields 2nd School

Staff recommendation:

- Select Site A
- Design School Facility for Grade K–8
- Plan to Open School in August 2019

