



IUSD LEADERSHIP



LAUREN BROOKS
President of the Board



BETTY CARROLL
Board Clerk



PAUL BOKOTA
Board Member



IRA GLASKY
Board Member



SHARON WALIN
Board Member



TERRY WALKER
Superintendent
of Schools



JOHN FOGARTY
Assistant
Superintendent,
Business Services



BRIANNE FORD
Chief Technology
Officer



EAMONN O'DONOVAN
Assistant
Superintendent,
Human Resources



CASSIE PARHAM
Assistant
Superintendent,
Education Services



CITY OF IRVINE



DONALD P. WAGNER
Mayor



CHRISTINA L. SHEA
Mayor Pro Tem



MELISSA FOX
Councilmember



FARRAH N. KHAN
Councilmember



ANTHONY KUO
Councilmember



JOHN RUSSO
City Manager



MIKE HAMEL
Chief of Police



PARTNERS





DISTRICT OVERVIEW

IUSD IS ONE OF THE FASTEST GROWING
AND HIGHEST PERFORMING
SCHOOL DISTRICTS IN THE NATION.



1,684 TEACHERS

177 ADMINISTRATORS

1,873 SUPPORT STAFF

EARLY CHILDHOOD **1**

ELEMENTARY **23**

K-8 **4**

MIDDLE **6**

HIGH **5**

ALTERNATIVE HIGH **1**



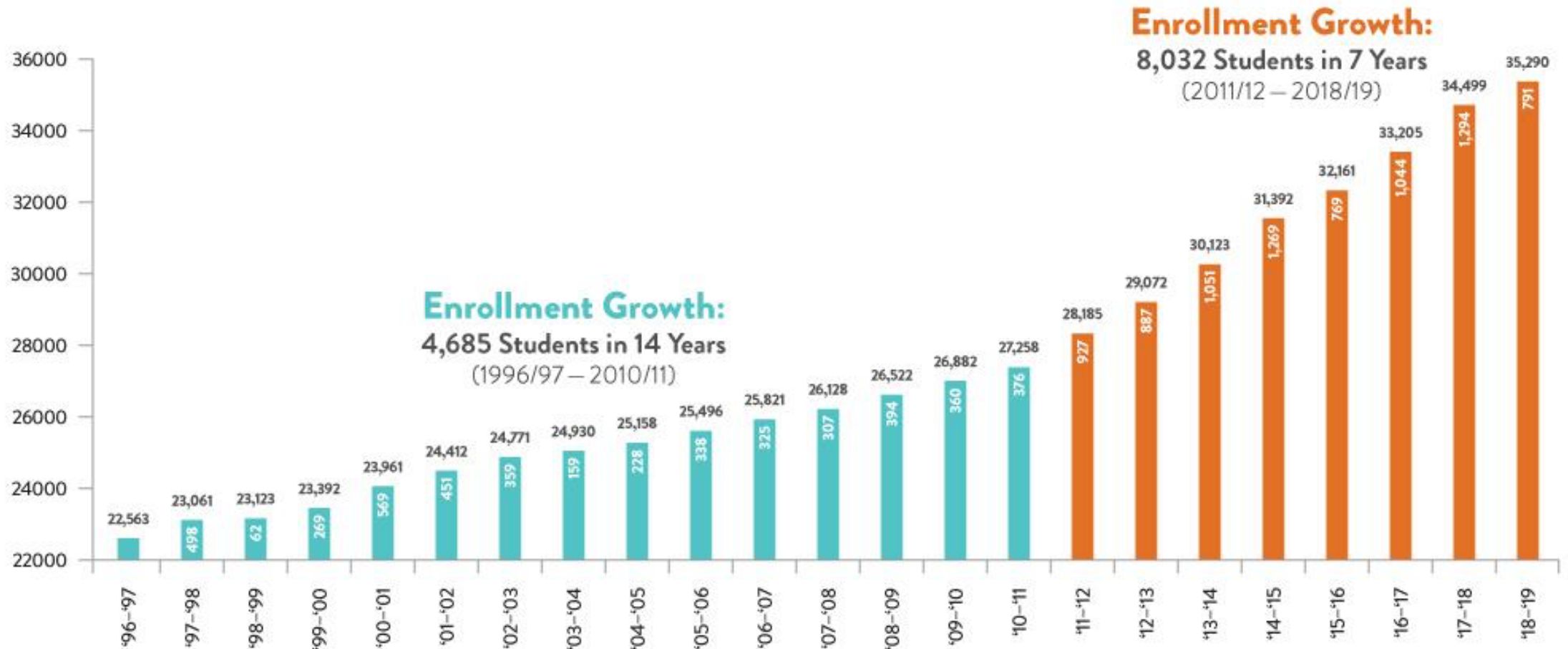
35,000+
STUDENTS ENROLLED





ENROLLMENT OVERVIEW

ENROLLMENT GROWTH (TK-12 STUDENTS)





ENROLLMENT OVERVIEW

ENROLLMENT GROWTH (TK-12 STUDENTS)





RECOGNITION



IUSD is Consistently
Ranked High on Newsweek's
*List of America's Top
High Schools.*



IUSD Sent the Most
Orange County Students
to National History Day
National Competition.



National Merit

IUSD Students Received the Most
National Merit Scholarships
in Orange County and
Second in State.



IUSD 2017 SAT Scores
Out Performed State Averages.



IUSD Ranked No. 1
in Orange County by Niche.



RECOGNITION



*Best Community
for Music Education
by the Highly Regarded
NAMM Foundation.*



More than Half of the
Pacific Symphony Youth
Ensemble Musicians are
IUSD Students (142 of 243),
More than Any Other
District in the State.



WalletHub

IUSD Ranked No. 3
in the Nation for Education
by WalletHub.



RECOGNITION



More than 60%
of Juniors and Seniors
are Enrolled in
AP Courses.

Source: AP—Equity and Excellence
Report

More than 56%
of Seniors Scored
A 3 or Higher on
Their AP Exams.

Source: AP—Equity and Excellence
Report

Nearly 70%
of Seniors Have
Taken an AP Course

Source: AP—Equity and Excellence
Report



17

Blue Ribbon
School
Awards



7

Gold Ribbon
School
Awards



63

California
Distinguished
School
Awards



ELA/LITERACY

2018

IUSD RANKED #2 IN THE STATE FOR THE THIRD YEAR

Percent Standard Met or Standard Exceeded

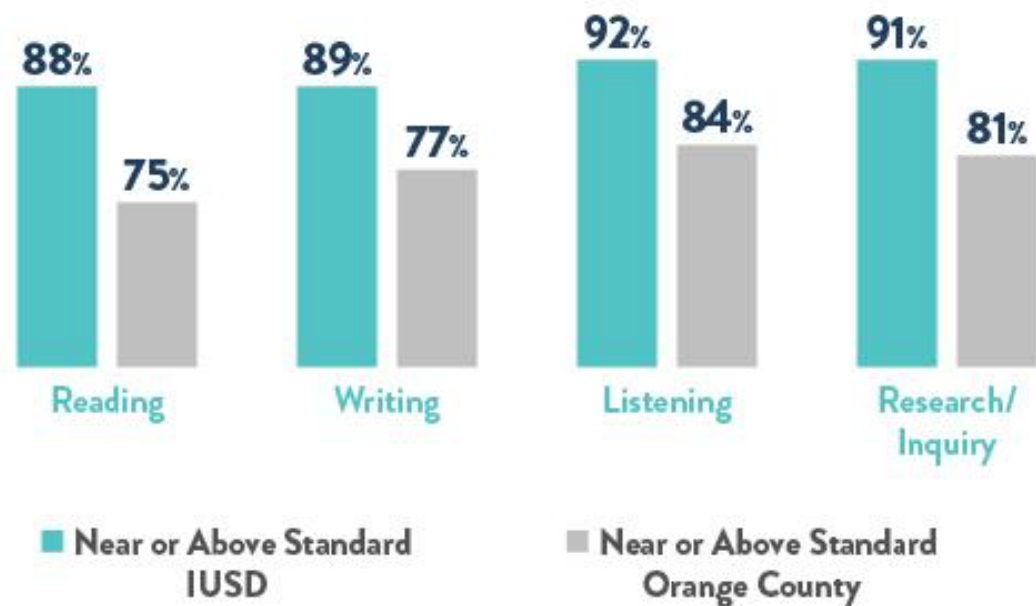


77%

58%

50%

Skill Areas





MATHEMATICS

2018

IUSD RANKED #2 IN THE STATE FOR THE THIRD YEAR

Percent Standard Met or Standard Exceeded

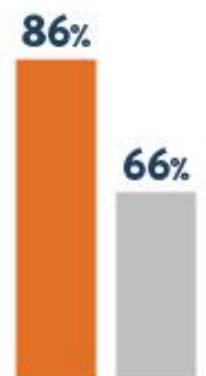


74%

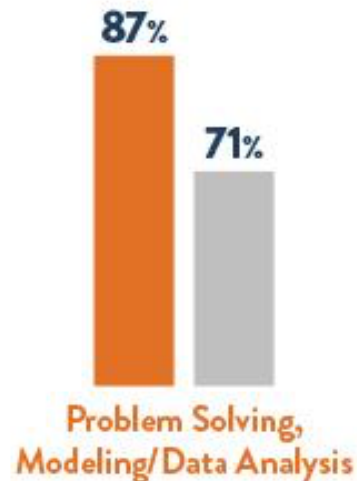
49%

39%

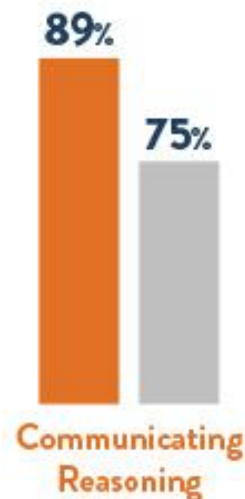
Skill Areas



Concepts
& Procedures



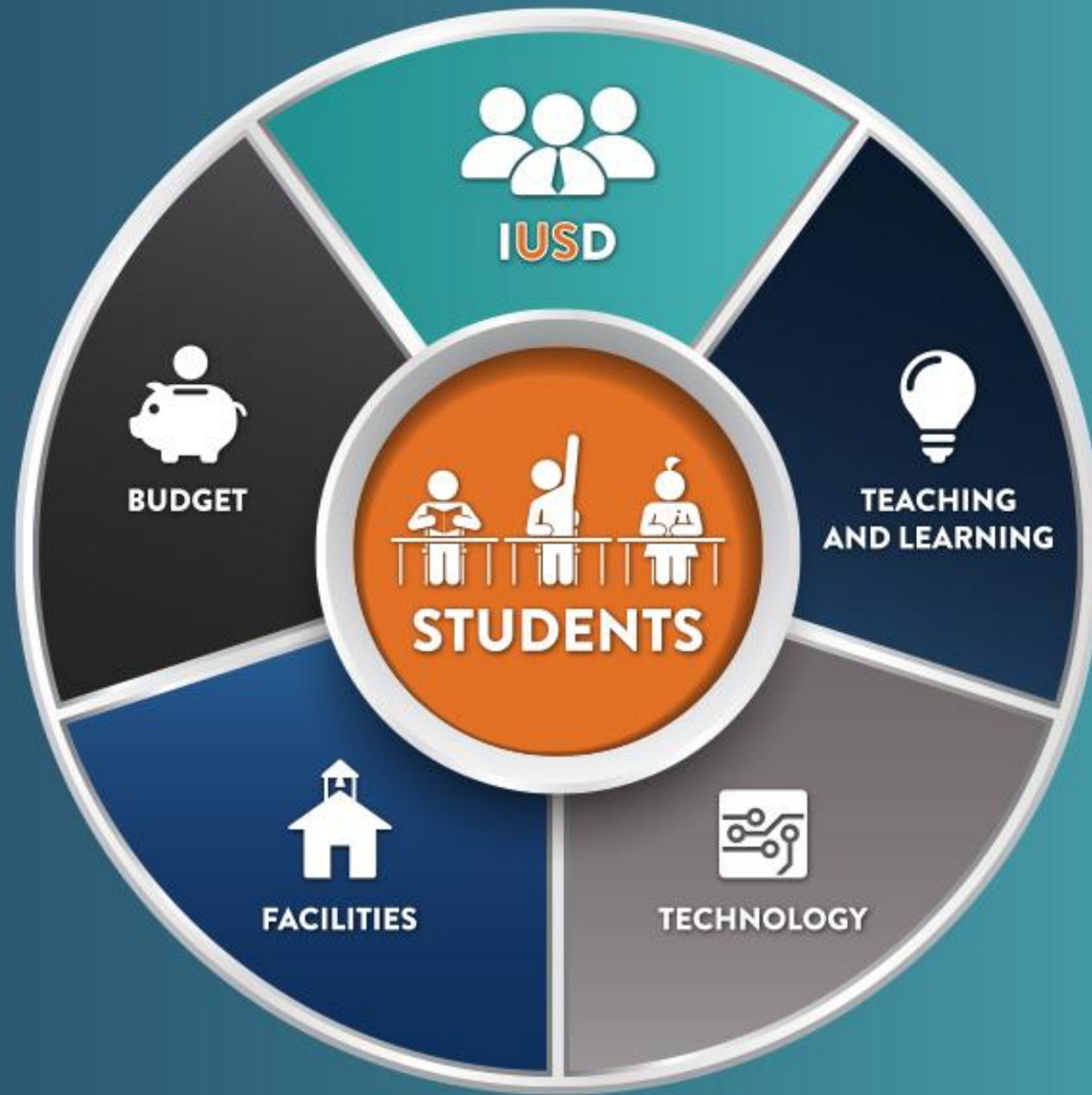
Problem Solving,
Modeling/Data Analysis

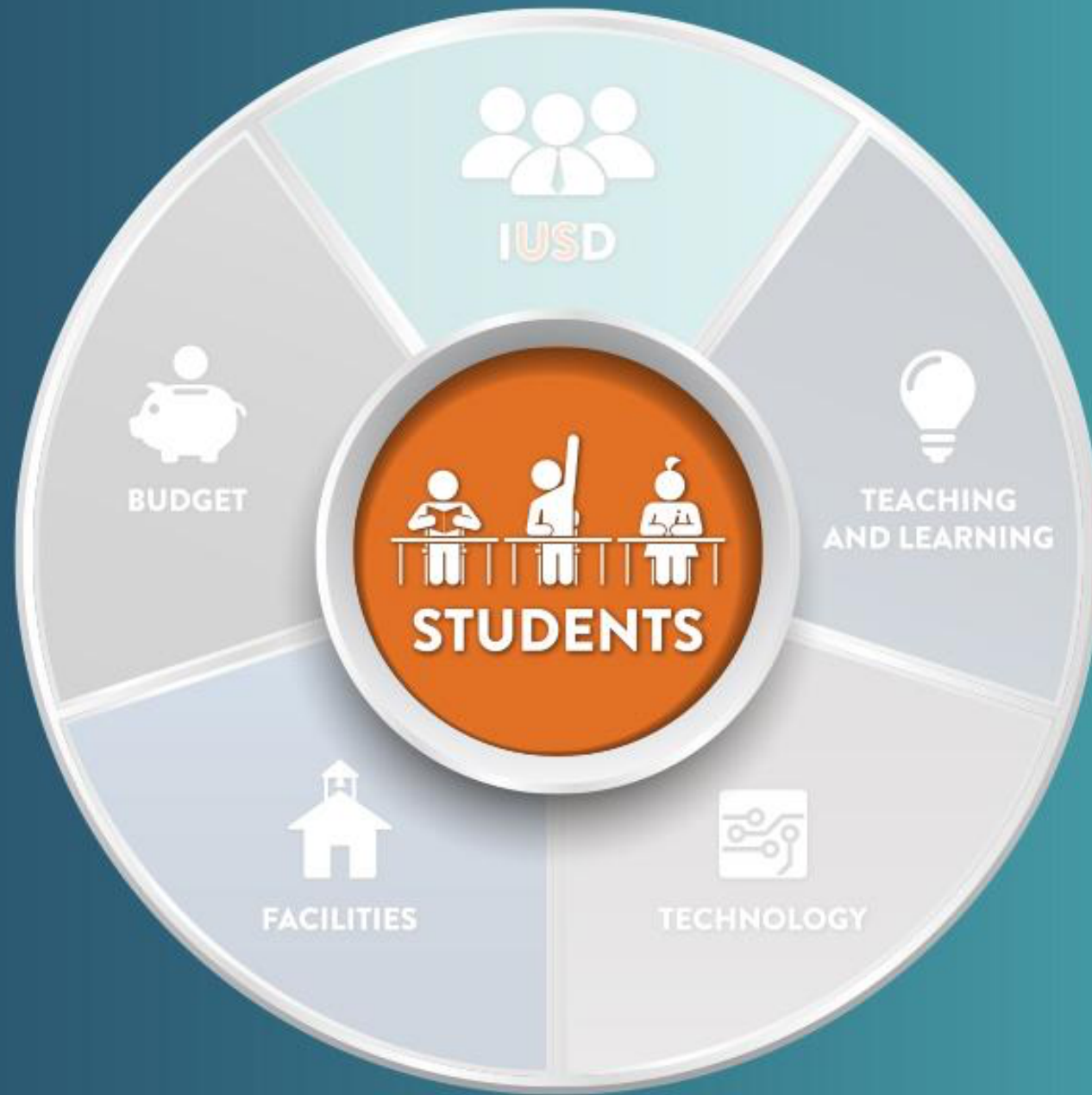


Communicating
Reasoning

■ Near or Above Standard
IUSD

■ Near or Above Standard
Orange County





STUDENTS

• EMPOWERED • INSPIRED • PREPARED







INVEST IN I“US”D

Our Continuous Improvement Efforts illustrate our core mission to develop essential capacities within our students and our staff, and to evaluate, each day, the impact of our teaching on student learning.



UTILIZE ESSENTIAL CAPACITIES

Knowledge

- Access and navigate large quantities of information and evaluate the validity and relevancy of this information
- Make broad connections between topics and identify relationships across disciplines
- Operate safely within the cyberspace community and demonstrate digital citizenship
- Engage in meta-cognition to understand and improve capacity for learning
- Reflect to anchor learning and to gain self-knowledge

Communication

- Communicate effectively when both speaking and writing
- Articulate a position persuasively and support it with evidence
- Present a message with a compelling voice and demonstrate effective presentation skills
- Collaborate effectively in diverse groups and communicate appropriately with an audience

Problem Solving

- Demonstrate flexibility and resiliency
- Apply acquired skills and strategies
- Think critically and creatively
- Take intellectual risks
- Recognize and utilize mistakes as key learning opportunities
- Ask questions to promote understanding

Relationship/Interpersonal Skills

- Accept responsibility
- Collaborate effectively and work in a team productively
- Cultivate meaningful relationships and demonstrate respect and empathy for others
- Demonstrate a passion for learning and a desire to excel
- Demonstrate ethical behavior
- Model the IUSD core values of integrity, trust, collaboration, empowerment, and learning



STUDY TEACHING AND LEARNING

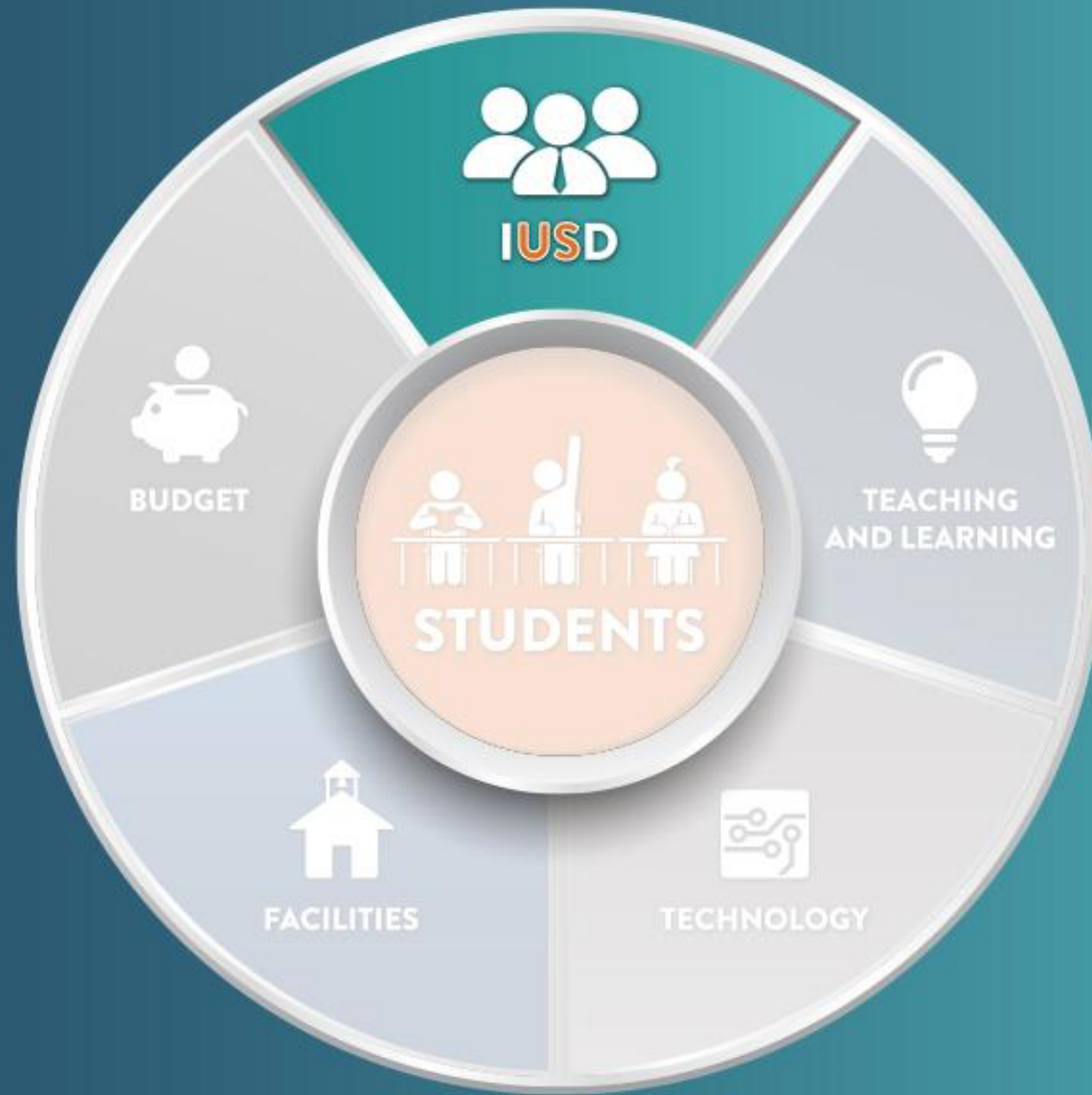
As educators, we should consider our teaching primarily in terms of its impact on student learning. In seeking to understand our effect, we must see learning through the eyes of our students and shape our instruction to meet their needs.



DRIVE CONTINUOUS IMPROVEMENT

Learning Communities are our primary vehicle for improving teaching and learning. Within our learning communities, educators are gathering evidence, engaging in collaborative discussions about this evidence, and continuously evaluating the effect that we have on student learning.





IUSD

• DEDICATED • TALENTED • PASSIONATE

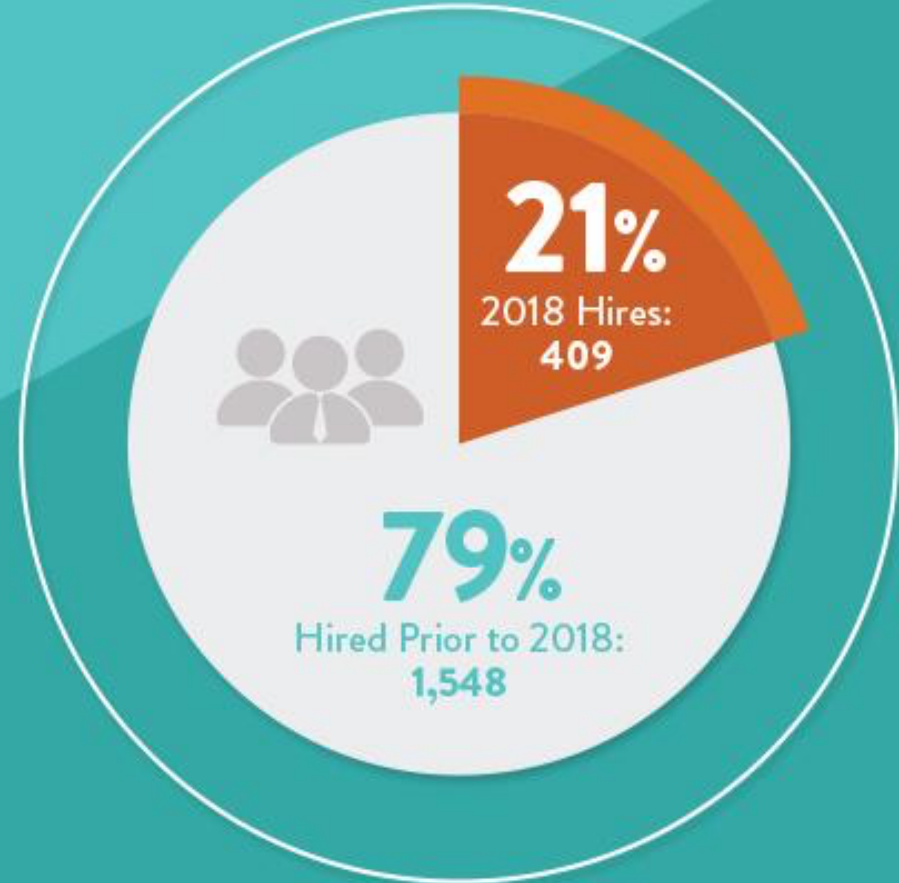




IUUSD



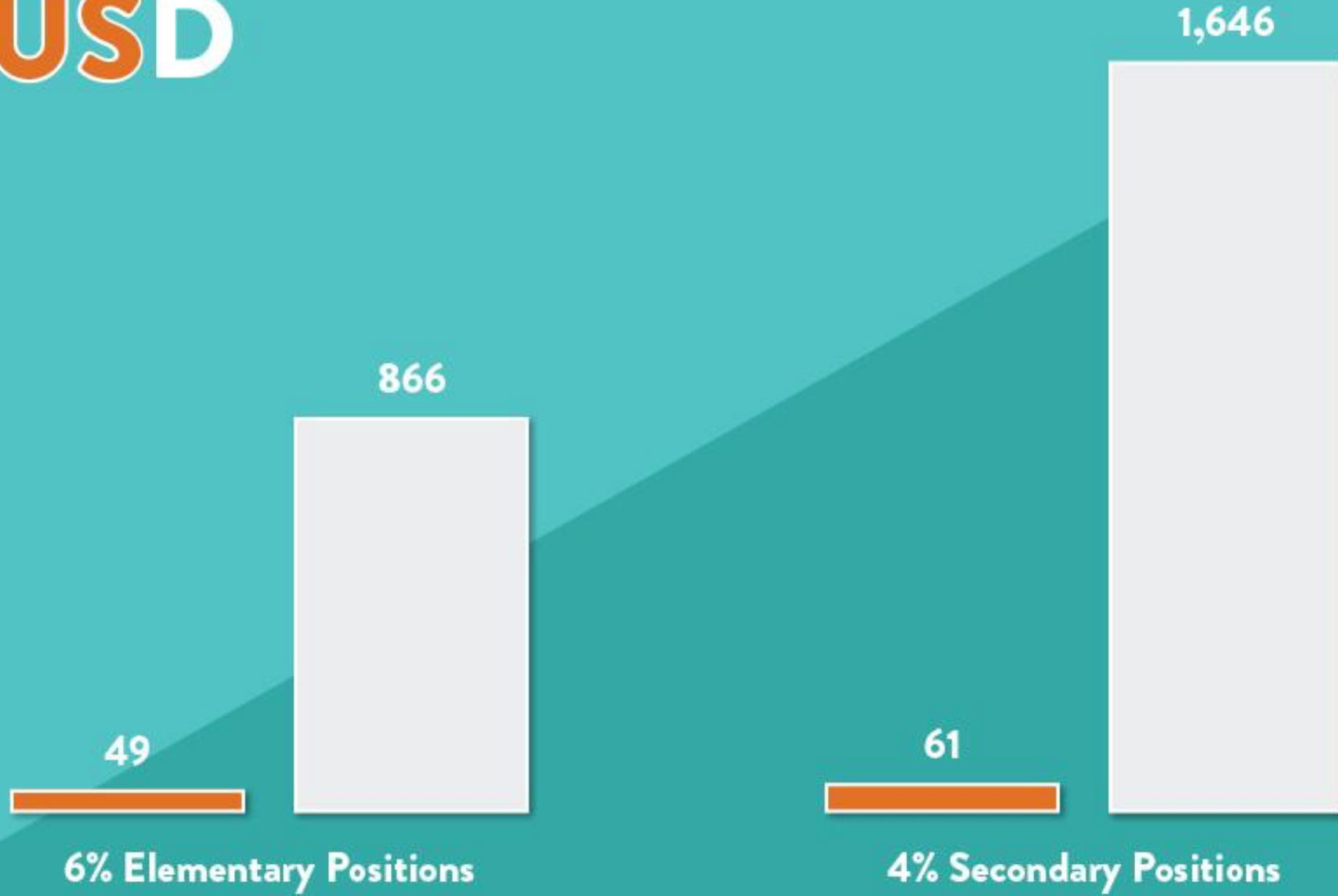
1,715 Teachers Overall
(Hired Over Past 6 Years)

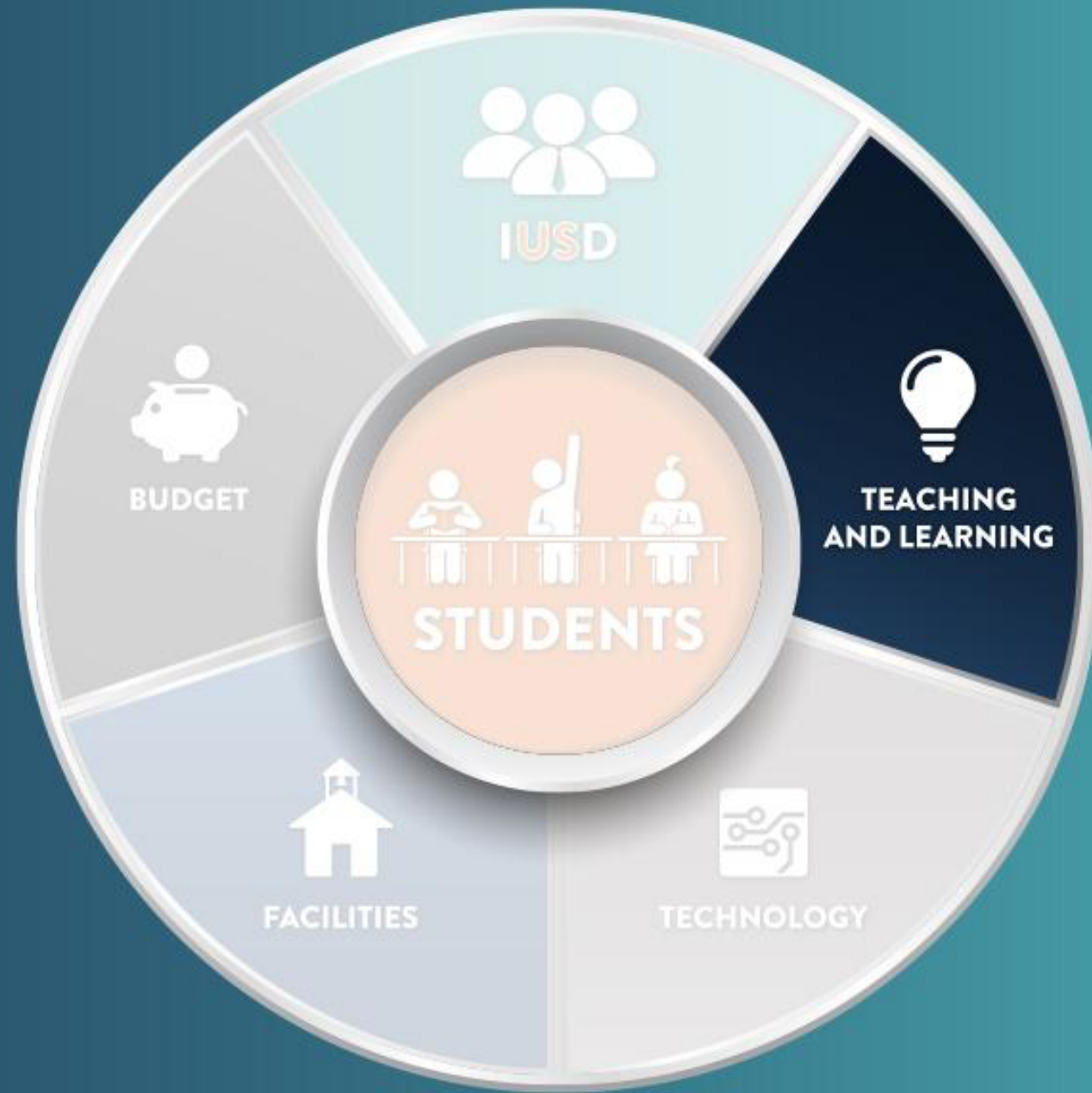


1,957 Classified Staff



IUUSD






TEACHING AND LEARNING

• REFLECTIVE • COLLABORATIVE • ADAPTIVE




Dr. Batty's




For Your Health
ASTHMA CIGARETTES
SINCE 1882
*For the temporary relief of
paroxysms of asthma*
EFFECTIVELY TREATS:
ASTHMA, HAY FEVER, FOUL BREATH
ALL DISEASES OF THE THROAT,
HEAD COLDS, CANKER SORES
BRONCHIAL IRRITATIONS
NOT RECOMMENDED FOR CHILDREN UNDER 6.



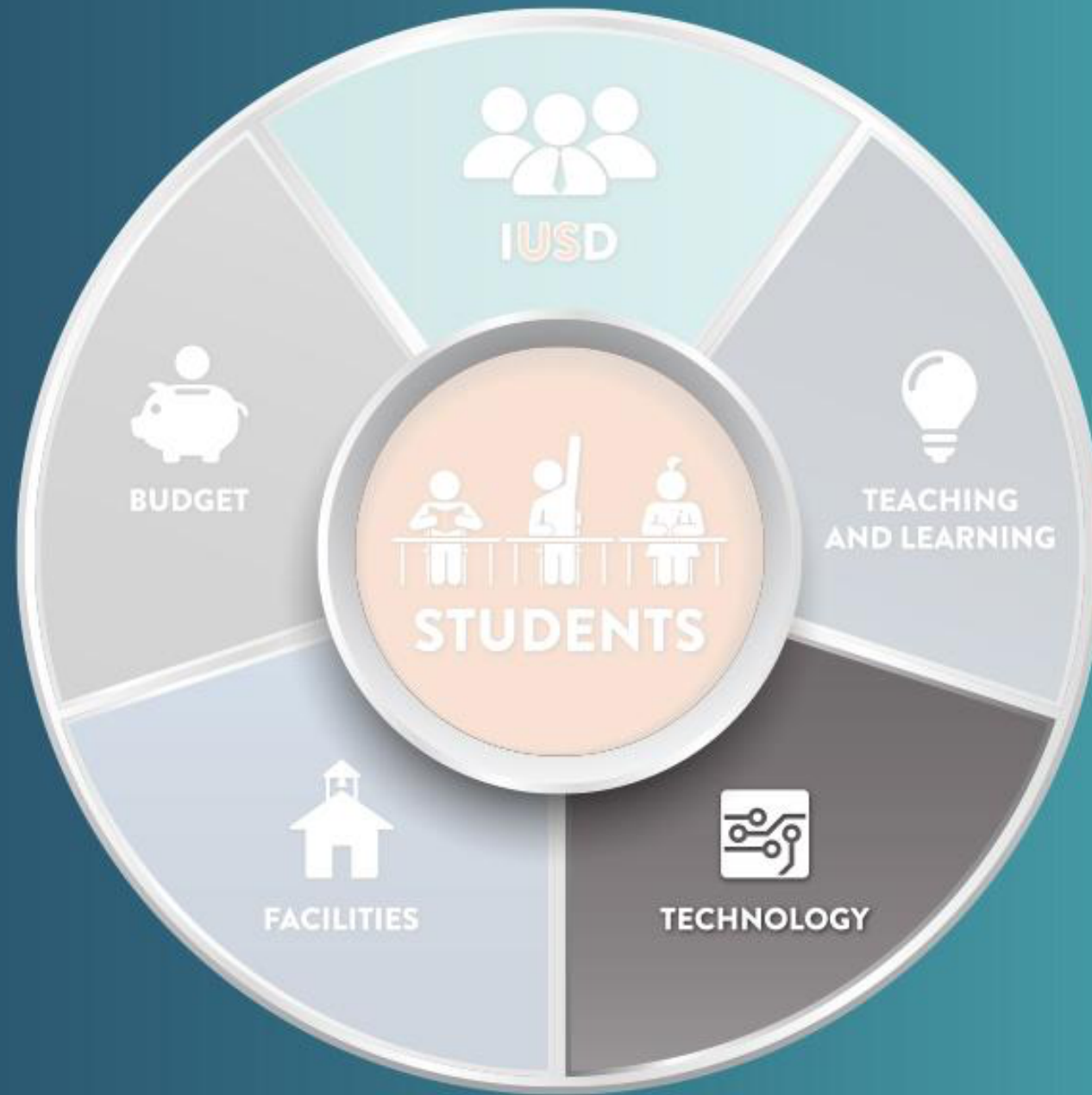
*For
PEP and VIGOR-*



**VITAMIN
DONUTS**

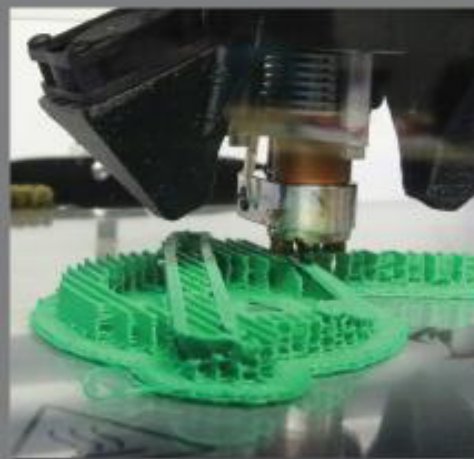
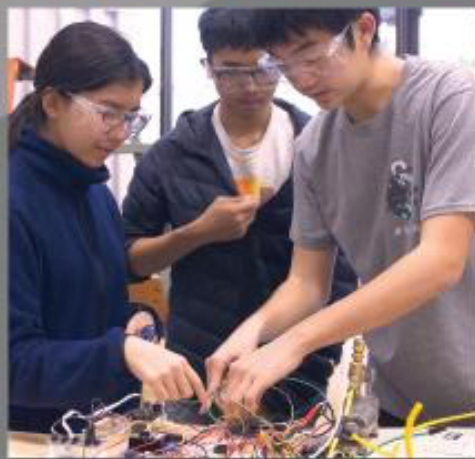


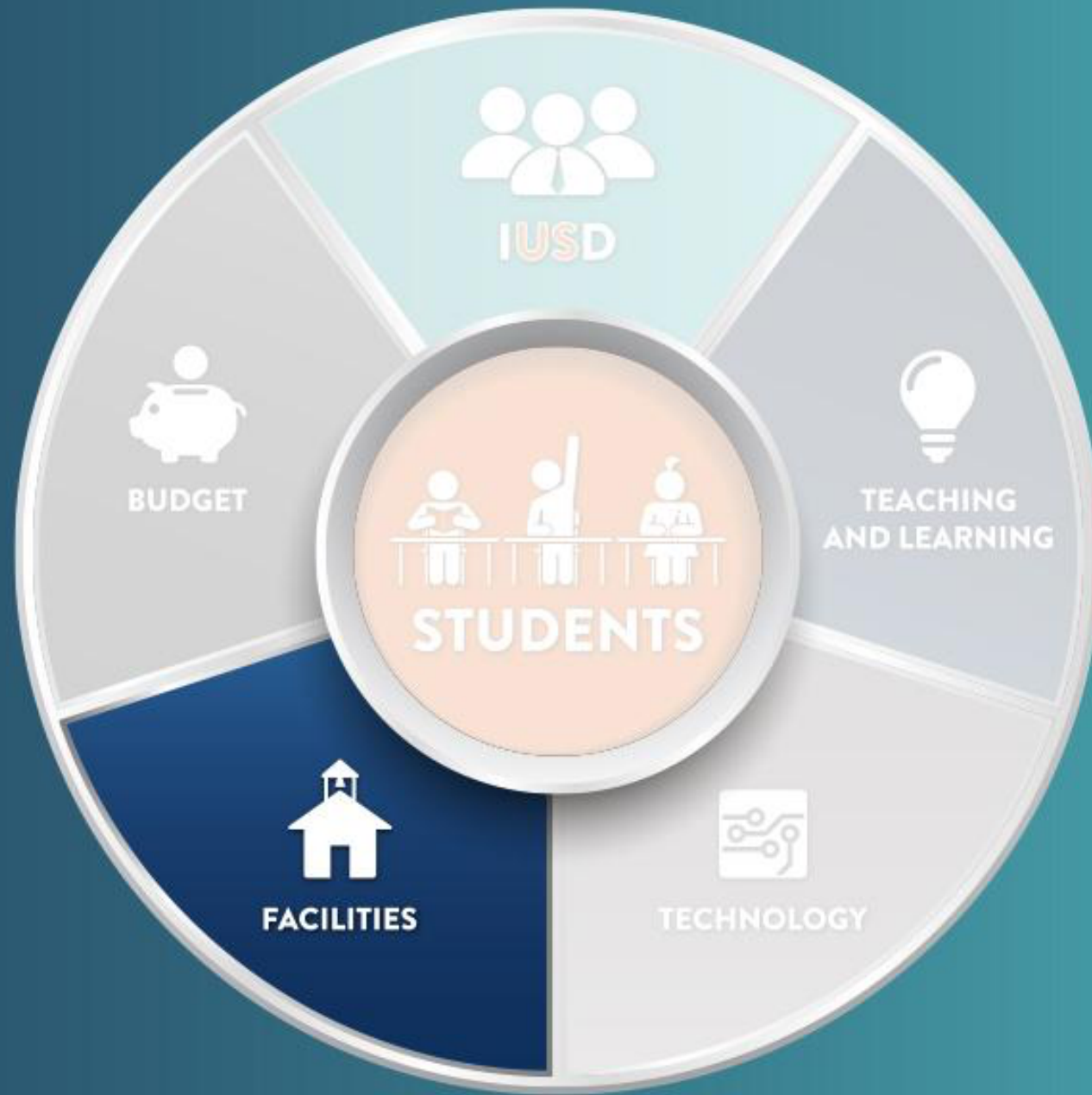
Each Donut Fortified with a minimum of 25 units of Vitamin B1



TECHNOLOGY

• CONNECTED • INNOVATIVE • LEVERAGED





FACILITIES

• PROGRESSIVE • DYNAMIC • AMBITIOUS





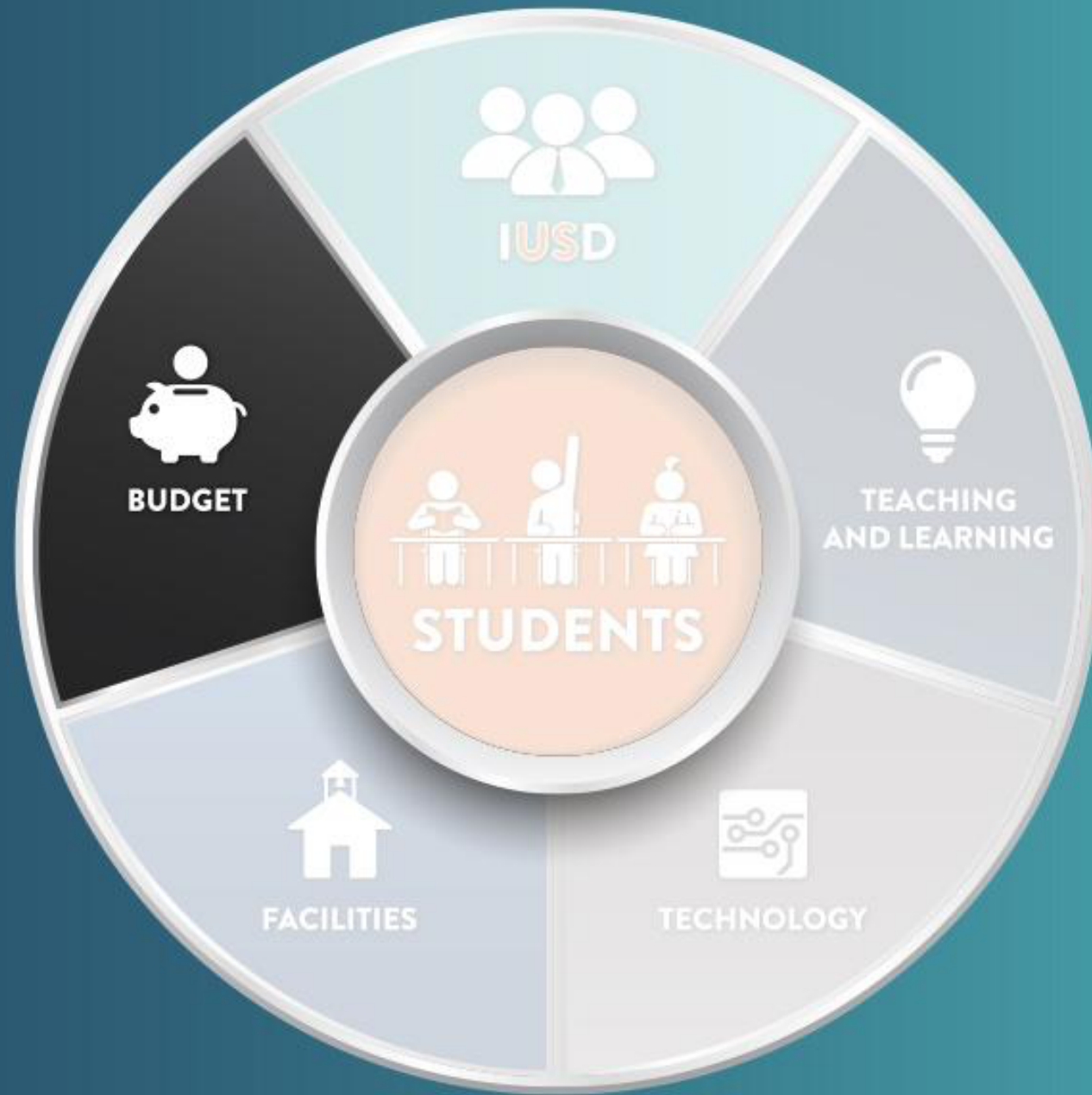
NEW CONSTRUCTION





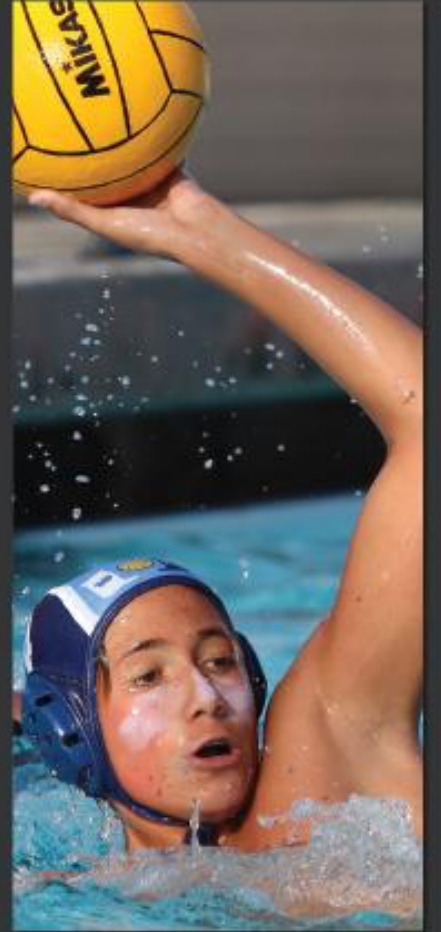
MEASURE E UPDATE





BUDGET

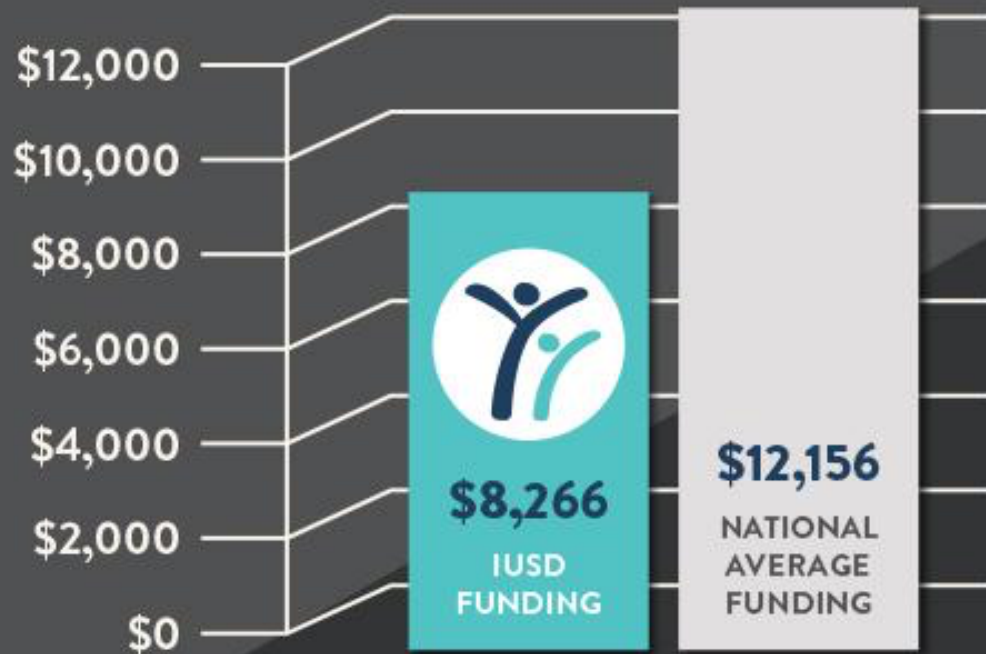
• STRATEGIC • BALANCED • MAXIMIZED



FUNDING GAP

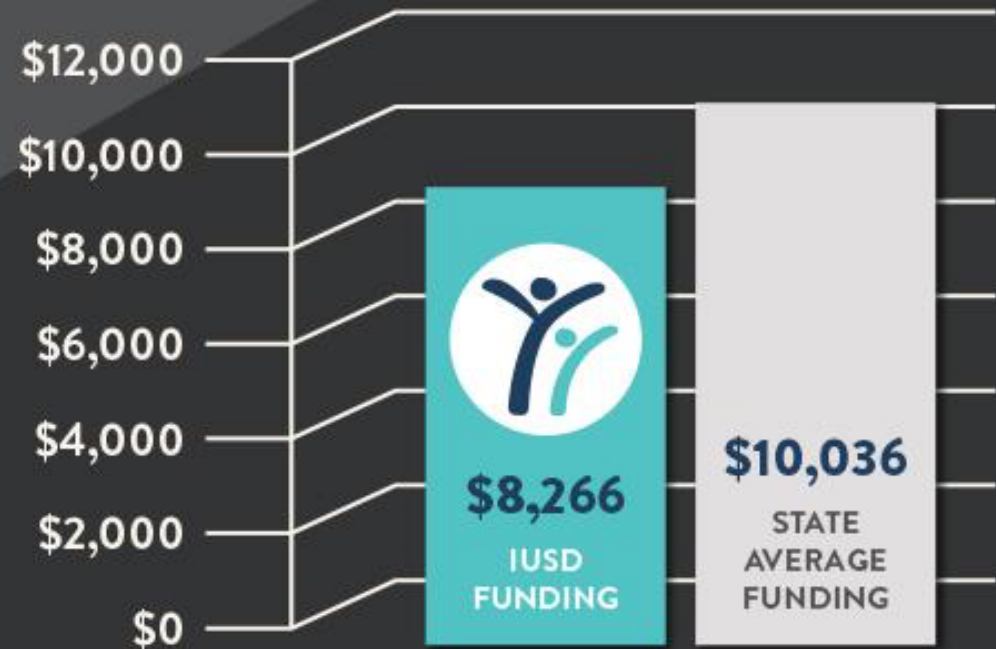
NATIONAL & STATE PER PUPIL FUNDING COMPARISON

NATIONAL AVERAGE FUNDING GAP



IMPACT: IUSD LOSES \$139 MILLION PER YEAR

STATE AVERAGE FUNDING GAP



IMPACT: IUSD LOSES \$59.6 MILLION PER YEAR

