

Adjusting Trustee Area Boundaries

January 18, 2022

Irvine Unified School District

PRESENTED BY:

Ronald D. Wenkart, Partner

David Lopez, Cooperative Strategies



Trustee Areas

- The five members of the Board of Education of the Irvine Unified School District are elected by trustee area.
- Each board member must reside in their trustee area and only the voters who reside in their trustee area may vote for the board member representing that trustee area.
- The elections are staggered with three board members elected in one election and two board members elected at the next election.

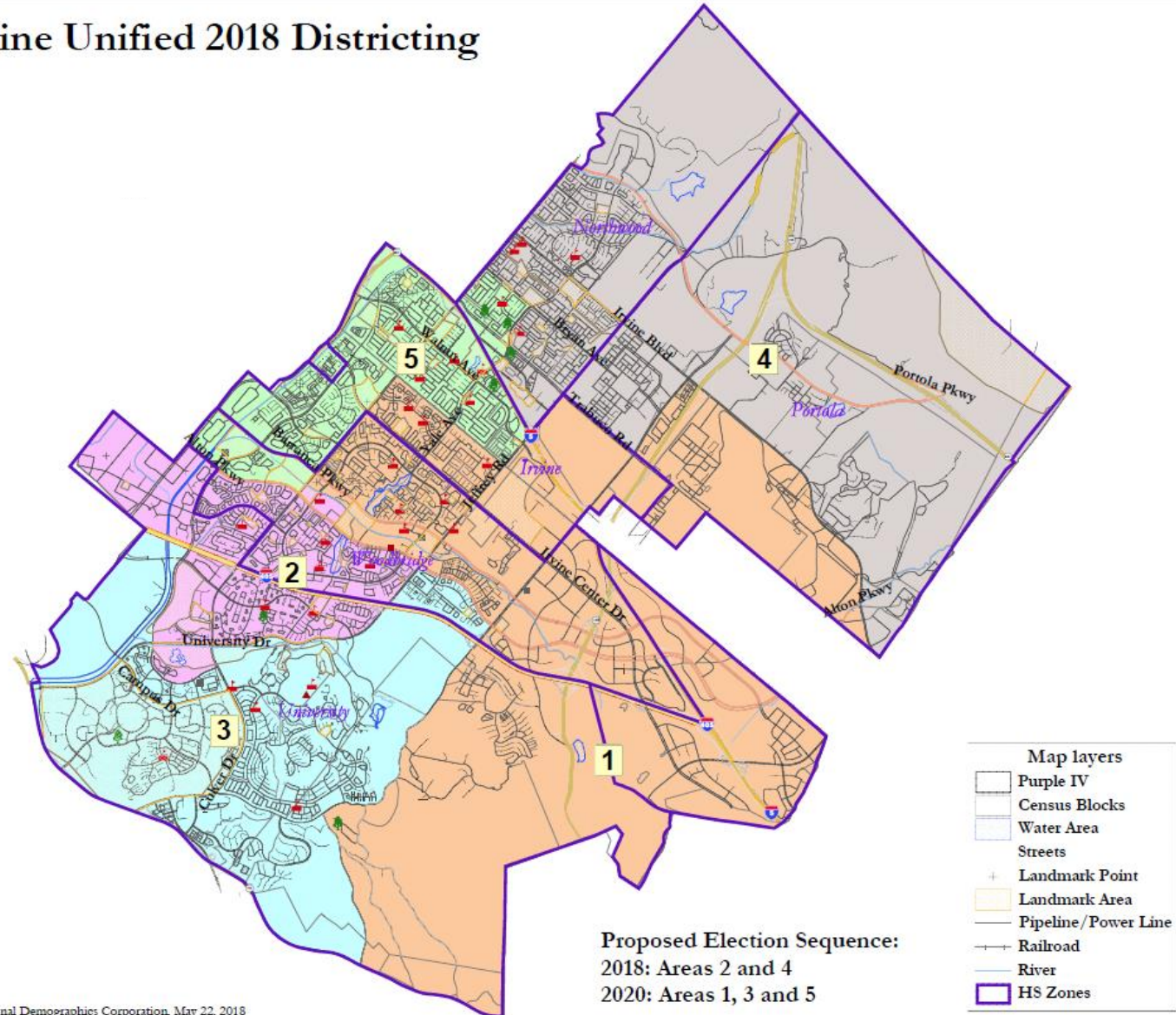


Population of Trustee Areas

- Federal and state law requires that the trustee areas must be equal in population.
- The trustee areas cannot vary in population by more than 10 percent.
- Due to growth or shifts in population over a ten year period, the trustee areas may vary in population by more than 10 percent after ten years.
- Education Code section 5019.5 requires school districts to adjust the boundaries of their trustee areas every ten years following the release of census data.
- The 2020 census data was released in September, 2021.

IUSD Current Trustee Areas

Irvine Unified 2018 Districting



National Demographics Corporation, May 22, 2018

DISTRICT DEMOGRAPHICS

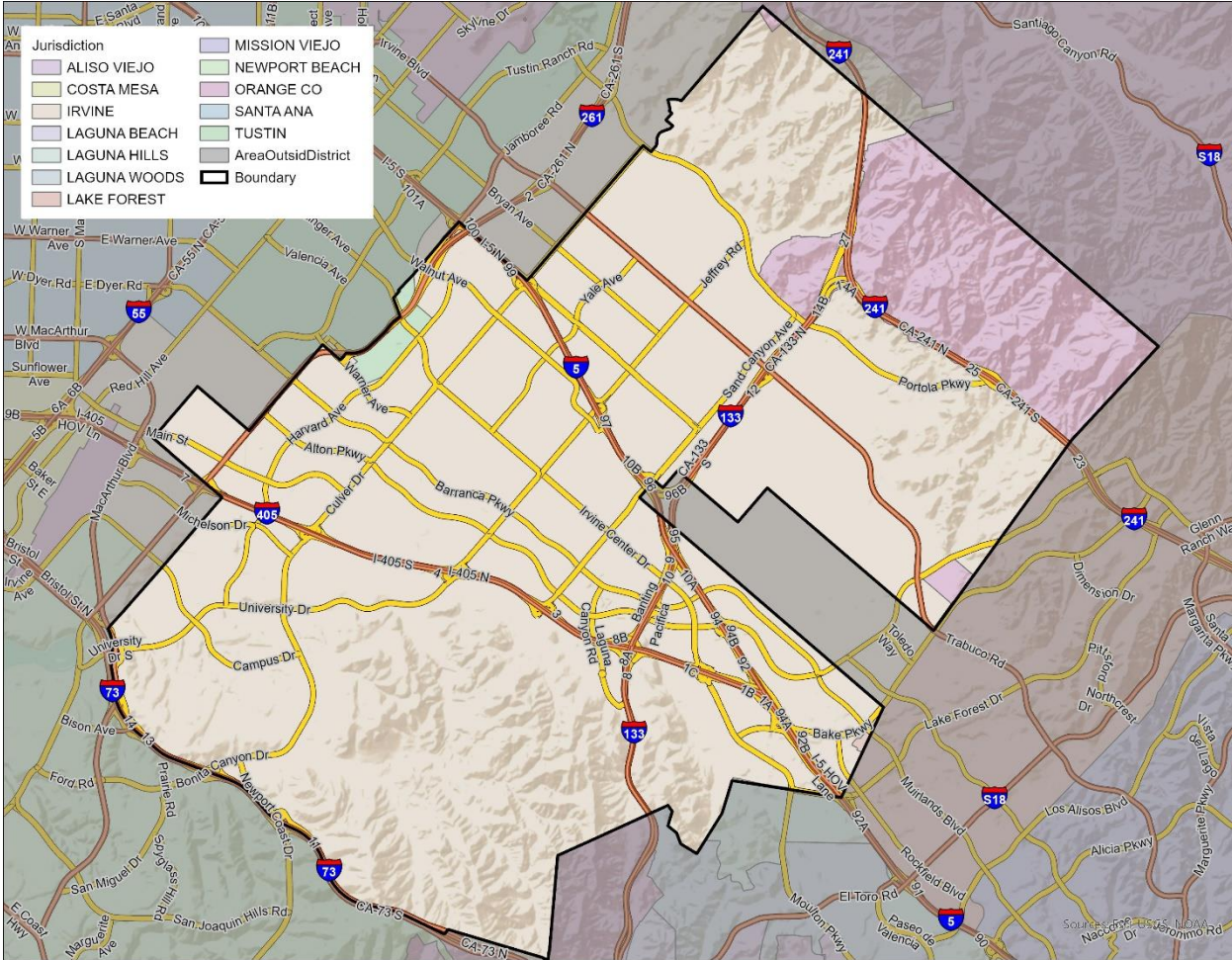
2020 CENSUS DATA



- This data showed substantial changes in the area served by Irvine Unified School District (Irvine USD) from 2010 to 2020, including:
 - Overall population growth of over 86,000 (46.5%)
 - Changes in the demographic composition, most notably, increases in the proportional share of Two or More Races and Hispanic/Latino populations.
- Validated redistricting data was released by the California Department of Finance on September 20.

Population (Within Irvine USD)	Total Population			
	2010 Census	2020 Census	Total Change	Percent Change
Trustee Area 1	35,395	71,979	36,584	103.4%
Trustee Area 2	38,264	40,466	2,202	5.8%
Trustee Area 3	38,287	51,197	12,910	33.7%
Trustee Area 4	36,148	70,603	34,455	95.3%
Trustee Area 5	38,097	38,596	499	1.3%
Total Population	186,191	272,841	86,650	46.5%

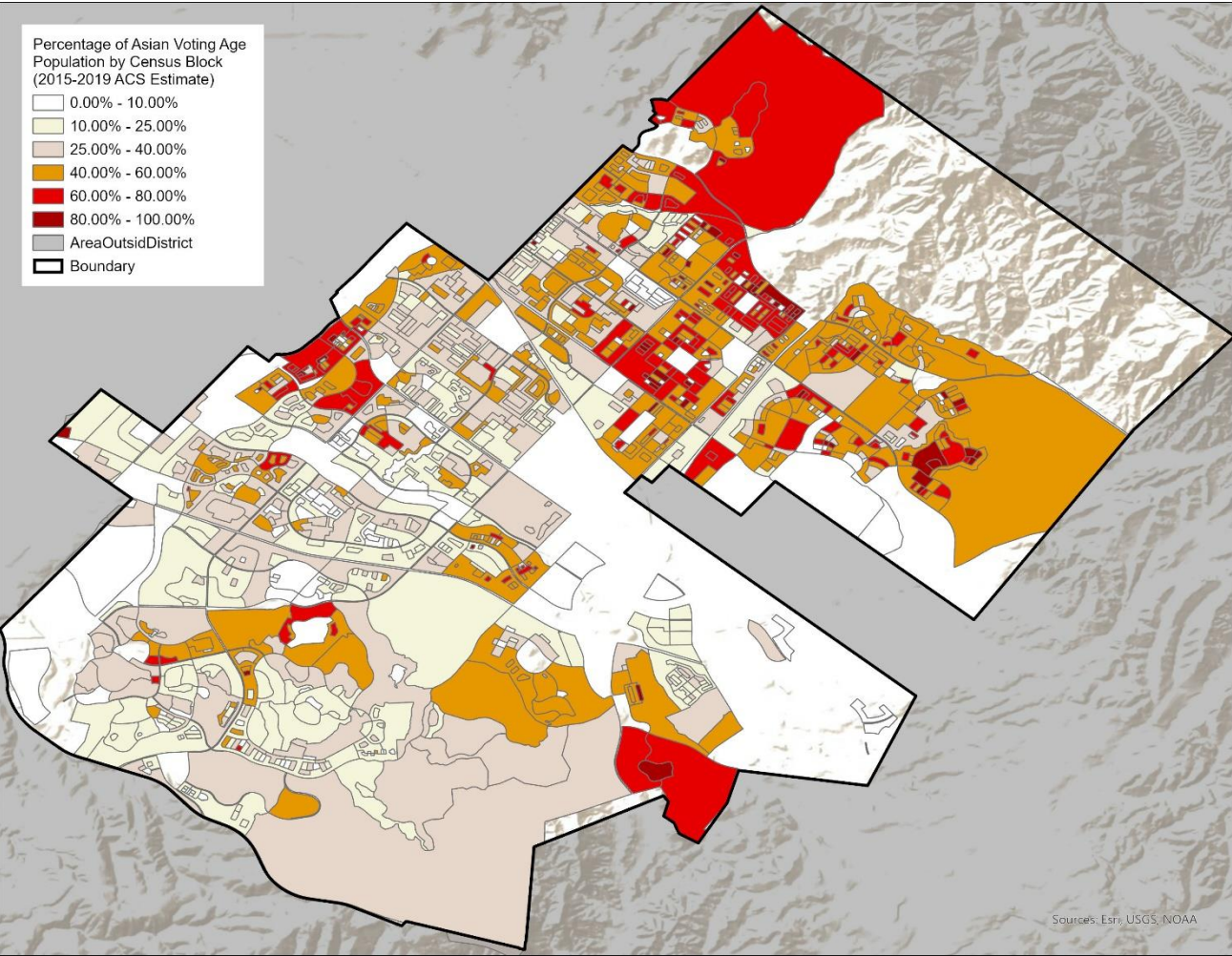
2020 CENSUS DATA



Population	Total Population		Age 18 +	
	Total	%	Total	%
Hispanic/Latino	32,187	11.8%	25,473	11.8%
White	93,840	34.4%	78,393	36.5%
Black/ African American	5,852	2.1%	4,786	2.2%
American Indian/Alaska Native	265	0.1%	169	0.1%
Asian	123,668	45.3%	95,169	44.3%
Native Hawaiian/ Pacific Islander	293	0.1%	226	0.1%
Other	1,623	0.6%	1,184	0.6%
Two or More Races	15,113	5.5%	9,633	4.5%
Total Population	272,841	100%	215,033	100%

DISTRICT DEMOGRAPHICS

ASIAN CITIZEN VOTING AGE POPULATION ESTIMATES



Population	2015-2019	
	Total	%
Hispanic/Latino	17,064	11.5%
White	73,366	49.6%
Black/ African American	2,666	1.8%
American Indian/Alaska Native	341	0.2%
Asian	49,578	33.5%
Native Hawaiian/ Pacific Islander	162	0.1%
Two or More Races	4,777	3.2%
Total Population	147,954	100%

CURRENT IUSD TRUSTEE AREAS

	Census 2020 Total Population:		272,841		Ideal Trustee Area Size:		54,568		Total Variance:		61.2%	
TRUSTEE AREA			Trustee Area 1		Trustee Area 2		Trustee Area 3		Trustee Area 4		Trustee Area 5	
TP* vs. CVAP**			TP	CVAP	TP	CVAP	TP	CVAP	TP	CVAP	TP	CVAP
Population			71,979	35,731	40,466	25,770	51,197	29,051	70,603	32,999	38,596	24,403
Population Variance			31.9%	N/A	-25.8%	N/A	-6.2%	N/A	29.4%	N/A	-29.3%	N/A
Hispanic/Latino			9.5%	9.9%	11.8%	12.4%	19.6%	17.9%	8.0%	7.2%	12.7%	11.1%
White			38.0%	54.0%	42.9%	57.3%	34.9%	47.3%	26.9%	42.9%	31.9%	46.7%
Black/African American			1.7%	1.7%	2.3%	1.7%	3.5%	1.9%	1.6%	1.5%	2.0%	2.3%
American Indian/Alaska Native			0.1%	0.1%	0.1%	0.3%	0.1%	0.4%	0.1%	0.3%	0.1%	0.0%
Asian			44.5%	31.1%	36.5%	25.2%	34.7%	28.4%	58.1%	46.0%	46.8%	35.0%
Native Hawaiian/Other Pacific Islander			0.1%	0.0%	0.1%	0.1%	0.0%	0.1%	0.1%	0.0%	0.2%	0.4%
Other			0.7%	N/A	0.7%	N/A	0.5%	N/A	0.4%	N/A	0.7%	N/A
Two or More Races			5.4%	3.1%	5.6%	2.9%	6.5%	4.1%	4.8%	2.0%	5.7%	4.4%

*Total Population; Source: Redistricting Database for California, Published by Statewide Database on September 20, 2021

**Citizen Voting Age Population (CVAP); Source: American Community Survey, 2015-2019 Data

Adjustment of Trustee Areas

- The statutory deadline for making any adjustments in trustee area boundaries, if necessary, is March 1, 2022.
- If the school district does not meet the deadline, the Orange County Committee on School District Organization makes the adjustments.
- The process for adjusting trustee area boundaries requires the school district to retain the services of a demographer.
- The demographer will review the census data to see if there has been population growth or a shift in population in the trustee areas of the District.



Adjustment of Trustee Areas

- If the trustee areas are all within a 10% range in population, no boundary adjustments are required and the Board can adopt a Resolution confirming the trustee area boundaries for the next ten years.
- If the trustee areas are not within a 10% range in population, the demographer will prepare two or three maps to adjust the boundaries.
- A review of the 2020 census data indicates that the trustee areas of the school district exceed the 10% range in population.
- Therefore, it will be necessary to adjust the school district's trustee area boundaries.

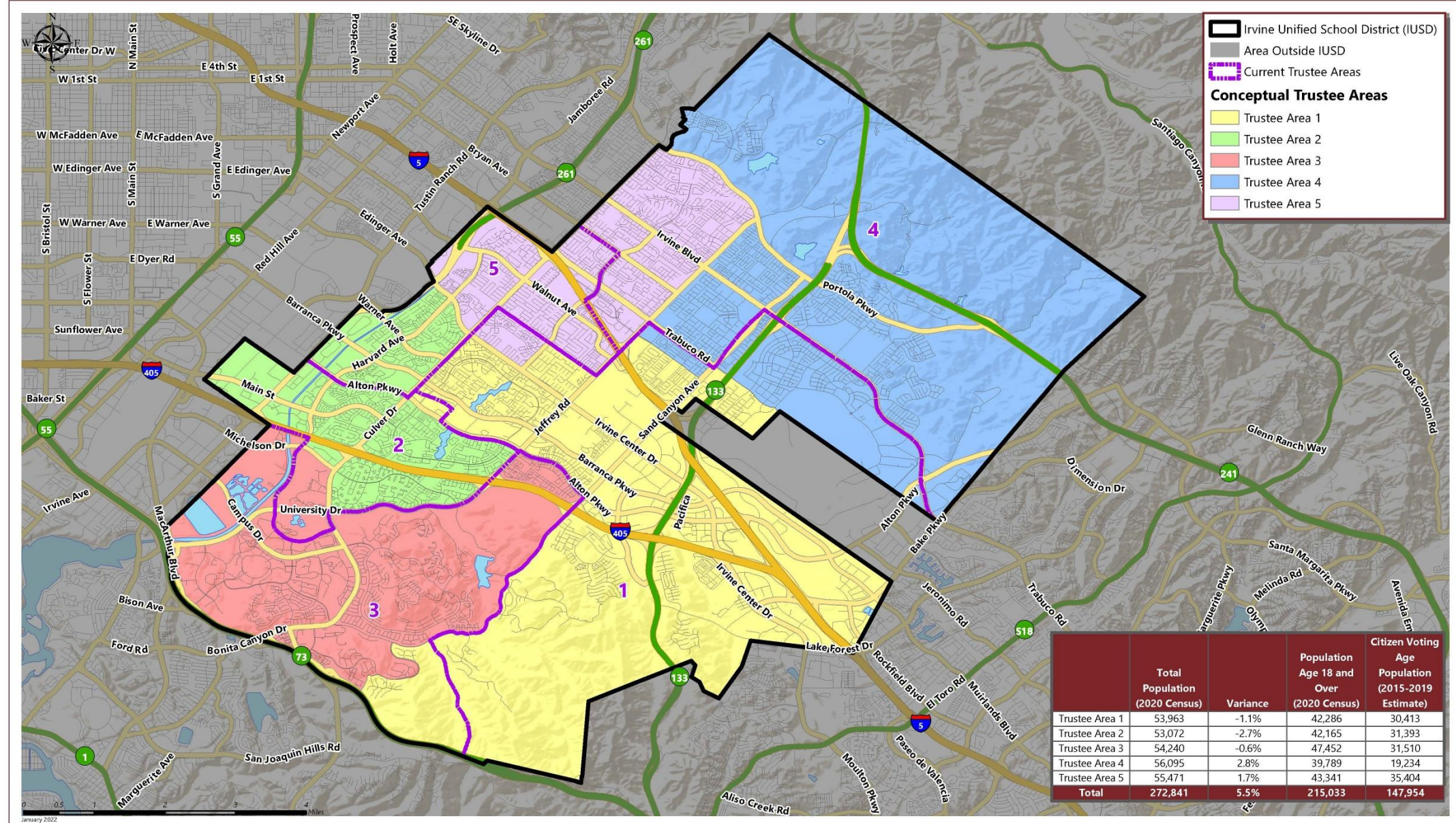
Criteria for Adjustment of Trustee Areas

- The process for adjusting trustee area boundaries requires the Board to adopt a Resolution Establishing Criteria for Adjusting Trustee Area Boundaries.
- The criteria in a proposed Resolution customarily states that each trustee area contain a nearly equal number of inhabitants, shall be drawn in a manner that complies with the Federal Voting Rights Act, shall consist of contiguous territory in as compact a form as possible, shall respect communities of interest as much as possible, and shall take into consideration school attendance zone boundaries, and other jurisdictional boundaries.



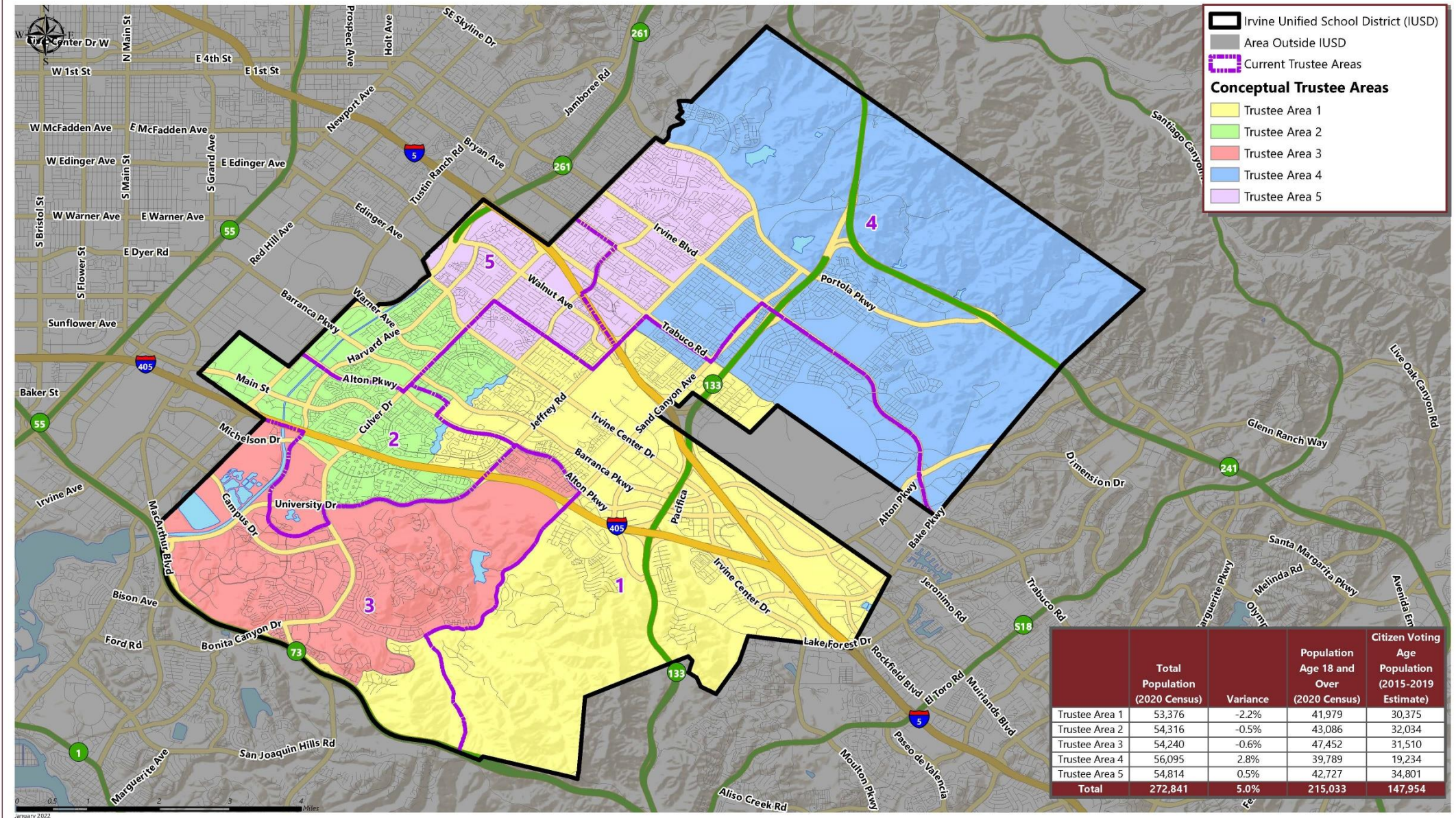
IRVINE UNIFIED SCHOOL DISTRICT

CONCEPTUAL TRUSTEE AREAS - SCENARIO 1



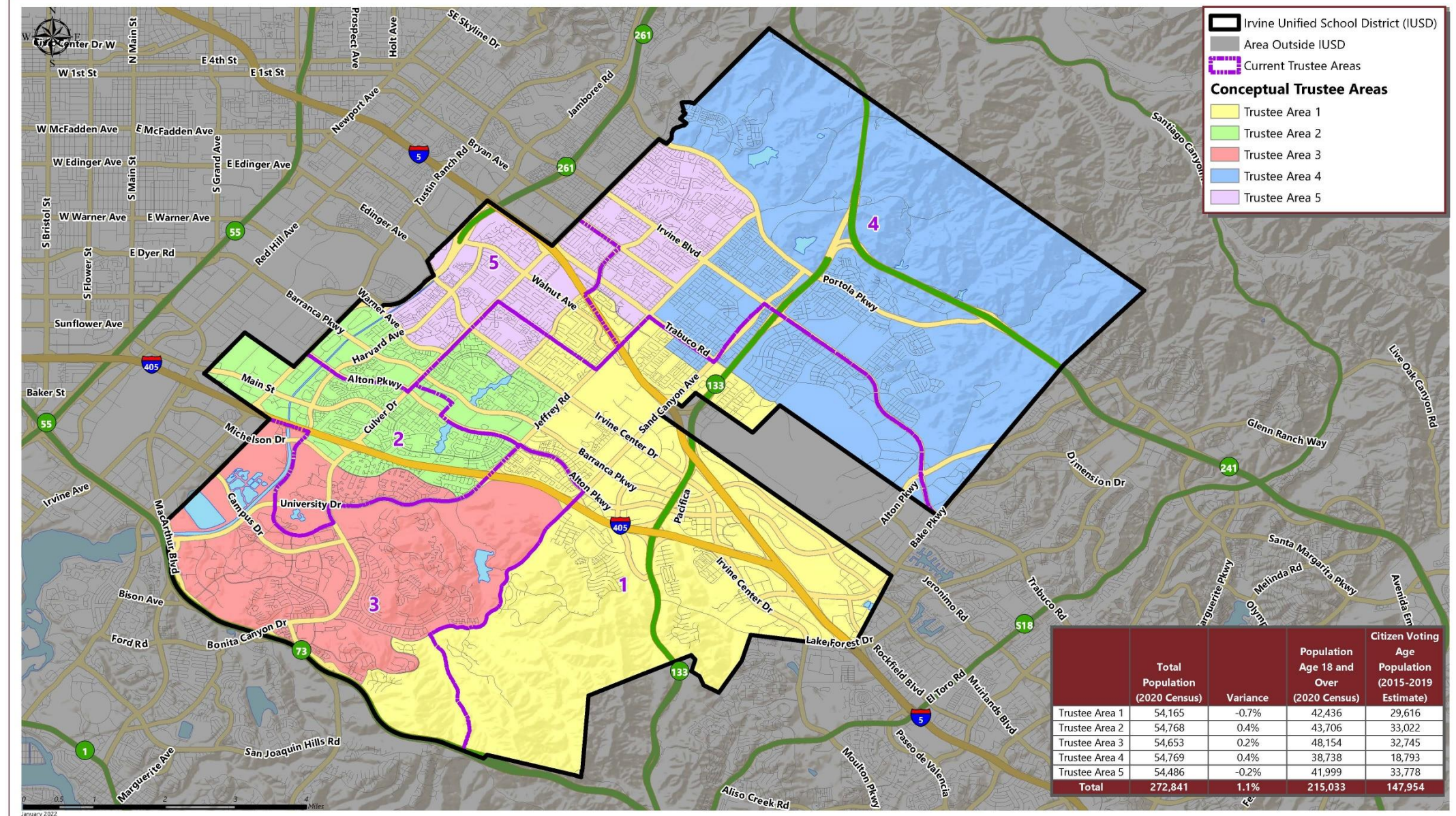
IRVINE UNIFIED SCHOOL DISTRICT

CONCEPTUAL TRUSTEE AREAS - SCENARIO 2



IRVINE UNIFIED SCHOOL DISTRICT

CONCEPTUAL TRUSTEE AREAS - SCENARIO 3



Thank You

For questions or comments, please contact:

{ Ronald D. Wenkart
(949) 536-2220
Ronald.Wenkart@aalrr.com }

aalrr

Atkinson, Andelson
Loya, Ruud & Romo

A Professional Law Corporation

Disclaimer

This AALRR presentation is intended for informational purposes only and should not be relied upon in reaching a conclusion in a particular area of law. Applicability of the legal principles discussed may differ substantially in individual situations. Receipt of this or any other AALRR presentation/publication does not create an attorney-client relationship. The Firm is not responsible for inadvertent errors that may occur in the publishing process.

©2022 Atkinson, Andelson, Loya, Ruud & Romo

