



# **Irvine Unified School District**

## **Facilities Study Session**

### **Measure E (Series 1 & Series 2)**

**June 4, 2019**

#### **Board of Education**

Paul Bokota

Lauren Brooks, President

Betty Carroll

Ira Glasky

Sharon Wallin



# MEASURE E TEAM

Facilities Planning	Construction Services	Fiscal Services	Measure E
Kim Coffeen Director	Joe Chapin Director	Sherry McGrew Analyst, Financial Construction Analysis	Christa DeBoer Supervisor, Facilities/Construction
Jesse Barron Assistant Director	Ed Hernandez Supervisor, Construction Services	Jenny Chau Accountant, Facilities Projects	
Dana Grudem Supervisor, Facilities Planning	Bruce Monroe Supervisor, Construction Projects	Caroline Kim Technician, Accounting	
Ymisserah Eddington Supervisor, Facilities Planning	Freddy Medina Supervisor, Construction Projects		
Jo Ann Cisneros Supervisor, Facilities Purchasing	Bethany Short Specialist, Construction Services		
Robert Ramirez Facilities Planner	Cathie Rain Administrative Assistant II		



# COC MEMBERS

Citizens Oversight Committee (COC)		
Todd Cope Parent Active in Parent Teacher Org.	Roza Mansouri Parent / Guardian	Connie Stone Parent Active in Parent Teacher Org.
Richard Knowland* Business Org. Rep.	Patti Ragland Bona-fide Taxpayers Assoc. Rep.	Kenric Stone Member of Community At-Large
Adele Heuer (Chair) Member of Community At-Large	Jeffrey Schmeh Parent / Guardian	Betty Jo Woollett Senior Citizen Org. Rep.
Ryan Larson Parent Active in Parent Teacher Org.	Kristi Smemoe (Vice Chair) Parent / Guardian	

\* Appointed March 26, 2019

- **Meet Quarterly (next meeting July 22, 2019)**
- **COC webpage** [iusd.org/COC](https://iusd.org/COC)



# AGENDA

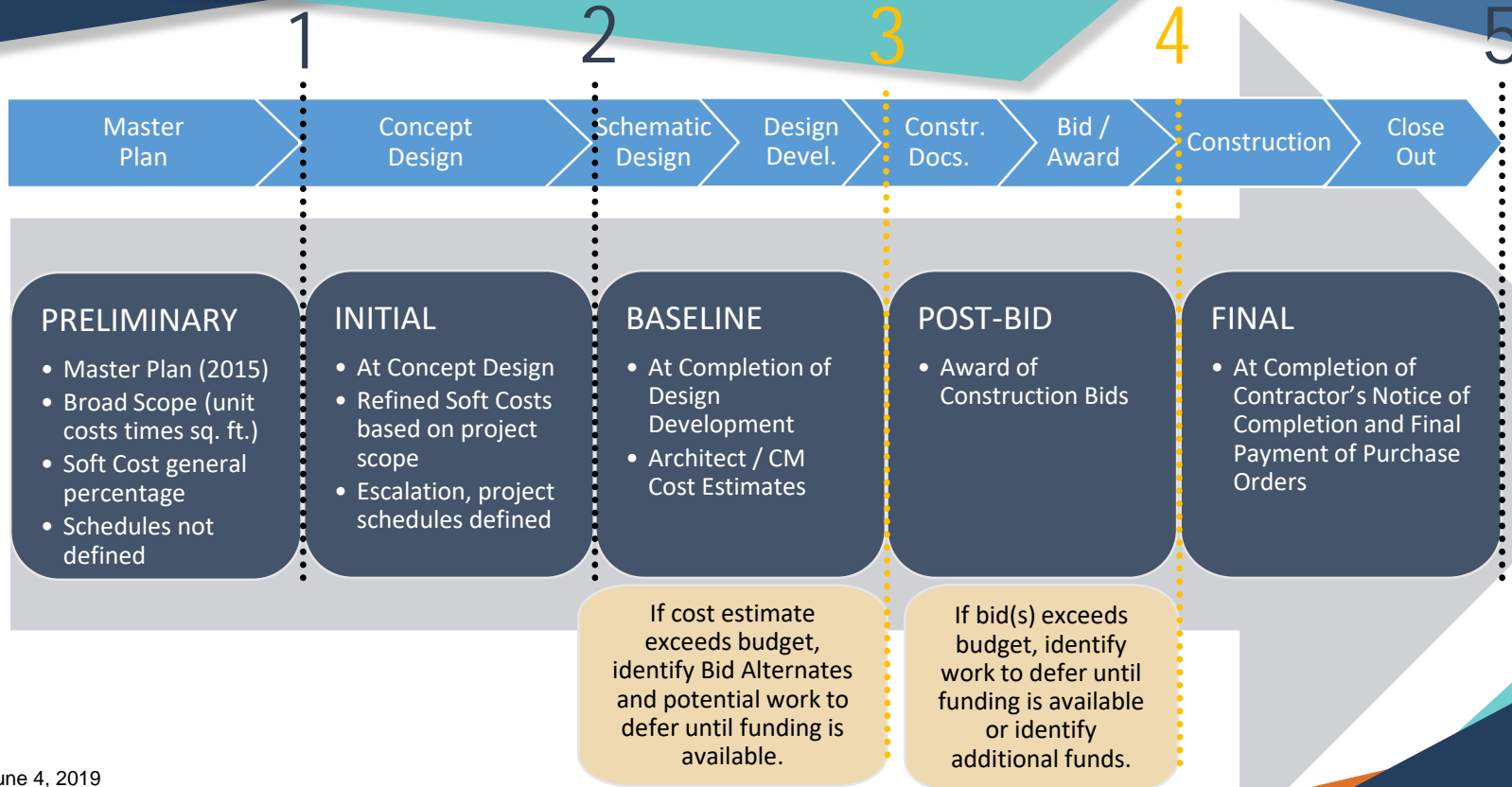
- **Budget**
- **Financing**
- **State Funding**
- **Facilities Master Plan Vision**
- **Series 2 Projects**
- **Series 1 Projects**
- **Communications**



# Budget



# BUDGET PROCESS



# CURRENT BOND FUNDS

<b><u>BOND FUNDS COMMITTED (Series 1 and 2)</u></b>	<b><u>\$136,000,000</u></b>
---	-----------------------------

- |  |                      |
|--|----------------------|
| • <b>Series 1 Bond 2016A (received 10/26/2016)</b> | <b>\$ 95,000,000</b> |
| • <b>Series 2 Bond 2018B (received 09/13/2018)</b> | <b>\$ 41,000,000</b> |



# CURRENT BOND AND DISTRICT FUNDS

<b>FUNDS COMMITTED (Series 1 and 2)</b>	<b>\$179,682,881</b>
• <b>Series 1 Funds</b>	<b>\$151,873,361</b>
Bond Series 2016A (Series 1)	\$ 95,000,000
Bond Series 2018B (Series 2)	\$ 13,115,495
District Funds (Funds 35, 40, 86-1, and LAN project)	\$ 42,143,875
State Grant (CTEFP)*	\$ 439,400
Rebate (IRWD)*	\$ 174,591
Fund 40 (Woodbridge HS Field Improvements)*	\$ 1,000,000
• <b>Series 2 Funds</b>	<b>\$ 27,884,505</b>
Bond Series 2018B (Series 2)*	\$ 27,884,505

\*Funds adjusted or added since June 5, 2018



# FUND SUMMARY / FORECASTED BUDGET (Series 1)

## Adjustment (10/26/2016)

Bond Series 1	\$ 95,000,000
IUSD Funds	\$ 29,600,000
IUSD Funds 1st Adj.	\$ 6,800,000
<b>FUNDS</b>	<b>\$ 131,400,000</b>

## Adjustment (06/05/2018)

Bond Series 1	\$ 95,000,000
IUSD Funds	\$ 29,600,000
IUSD Funds 1st Adj.	\$ 6,800,000
IUSD Funds 2nd Adj.	\$ 5,100,000
IUSD IT Infrastructure	\$ 643,875
CTE Grant (CHS)	\$ 348,920
Bond Series 2	\$ 13,115,495
<b>FUNDS Approved</b>	<b>\$ 150,608,290</b>

## Current (06/04/2019)

Bond Series 1	\$ 95,000,000
IUSD Funds	\$ 29,600,000
IUSD Funds 1st Adj.	\$ 6,800,000
IUSD Funds 2nd Adj.	\$ 5,100,000
IUSD IT Infrastructure	\$ 643,875
CTE Grant (CHS)	\$ 439,400
Bond Series 2	\$ 13,115,495
IRWD Rebate	\$ 174,591
Fund 40 to WHS Field	\$ 1,000,000
<b>FUNDS Available</b>	<b>\$ 151,873,361</b>
<b>CURRENT BUDGET</b>	<b>\$ 152,629,021</b>
<b>OVER FUNDS Available</b>	<b>\$ (755,660) *</b>

\* Amount will reduce as projects are completed and surplus funds are identified.

**OVER FUNDS Available \$ (755,660) \***



# CURRENT BUDGETED COSTS (Series 1)

- **Enclose Classrooms (6 schools)** **\$ 13,658,383**  
Bonita Canyon ES, College Park ES, Culverdale ES,  
Greentree ES, Santiago Hills ES, Stone Creek ES
- **High School Modernizations (2 schools)** **\$ 12,146,058**  
Irvine HS, University HS
- **Expansions (2 schools)** **\$ 11,164,999**  
Eastshore ES, Creekside HS
- **Elementary School Modernizations (4 schools)** **\$ 46,360,048**  
Brywood ES, Meadow Park ES, Springbrook ES, Westpark ES
- **High School Field Improvements (2 schools)** **\$ 6,789,312**  
Northwood HS, Woodbridge HS



# CURRENT BUDGETED COSTS (Series 1)

*-continued-*

• <b>Middle School Science Classrooms (5 schools)</b> Lakeside MS, Rancho San Joaquin MS, Sierra Vista MS, South Lake MS, Venado MS	<b>\$ 22,601,618</b>
• <b>New Theater (1 school)</b> Woodbridge HS	<b>\$ 27,910,257</b>
• <b>Music Classroom Buildings (3 schools)</b> Brywood ES, Meadow Park ES, Springbrook ES	<b>\$ 9,757,653</b>
• <b>Interim Campuses (2 schools)</b> El Camino, Westwood Basics	<b>\$ 1,740,693</b>
• <b>Program Costs</b>	<b>\$ 500,000</b>
<hr/>	
<b>TOTAL</b>	<b>\$152,629,021</b>



# CHANGE ORDERS (Series 1)

School	Original Contract	Final Contract*	Change Orders	Change Order %
Bonita Canyon ES	\$ 687,833	\$ 661,920	\$ (25,913)	-3.77%
College Park ES	\$ 1,947,472	\$ 1,997,707	\$ 50,235	2.58%
Culverdale ES	\$ 1,004,045	\$ 1,020,602	\$ 16,557	1.65%
Greentree ES	\$ 1,263,711	\$ 1,240,335	\$ (23,376)	-1.85%
Santiago Hills ES	\$ 1,053,407	\$ 1,050,915	\$ (2,492)	-0.24%
Stone Creek ES	\$ 3,155,560	\$ 3,113,229	\$ (42,331)	-1.34%
Northwood HS	\$ 2,946,419	\$ 3,055,203	\$ 108,784	3.69%
Irvine HS	\$ 4,704,255	\$ 4,843,227	\$ 138,972	2.95%
University HS	\$ 3,533,004	\$ 3,519,126	\$ (13,878)	-0.39%
<b>TOTALS</b>	<b>\$ 20,295,706</b>	<b>\$ 20,502,264</b>	<b>\$ 206,558</b>	<b>1.02%</b>

\*Change Order percentages for completed projects.



# Financing



# MEASURE E FINANCING

- Original Measure E Bond capacity based on annual Assessed Valuation growth within the SFID of 3% - 4.5% to be issued in four (4) Series
  - Yielding projected project funding of \$250.8 Million up to \$319.0 Million
  - Measure E initial budget set at \$250.8 Million
- Annually review Assessed Valuation to determine growth and potential impact to bonding capacity
- Based on growth within the SFID, assumptions increased to annual Assessed Valuation growth of 3.5%
  - Yielding projected project funding of \$272.3 Million
  - Increase number and frequency of Series from four (4) to five (5)



# REVISED MEASURE E BOND SERIES (3.5% GROWTH)

- Series 1 funds received October 26, 2016
- Series 2 funds received September 13, 2018

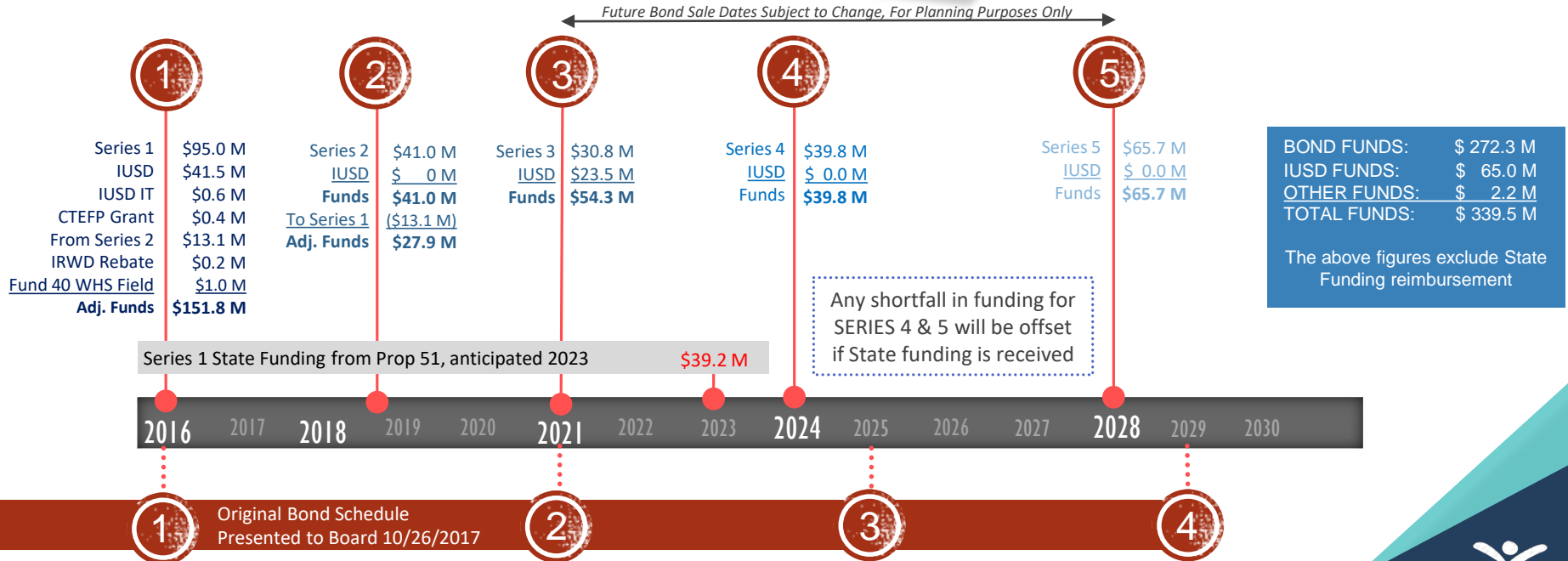
<u>ORIGINAL</u>	
2016 (Series 1)	\$ 95.0 M
2021 (Series 2)	\$ 51.9 M
2025 (Series 3)	\$ 49.4 M
2029 (Series 4)	\$ 54.5 M
TOTAL	\$250.8 M

<u>ISSUED/PROPOSED</u>	
2016 (Series 1)	\$ 95.0 M
2018 (Series 2)	\$ 41.0 M
2021 (Series 3)	\$ 30.8 M
2024 (Series 4)	\$ 39.8 M
2028 (Series 5)	\$ 65.7 M
TOTAL	\$272.3 M*

\*Maximum Bond Capacity is \$319.0M



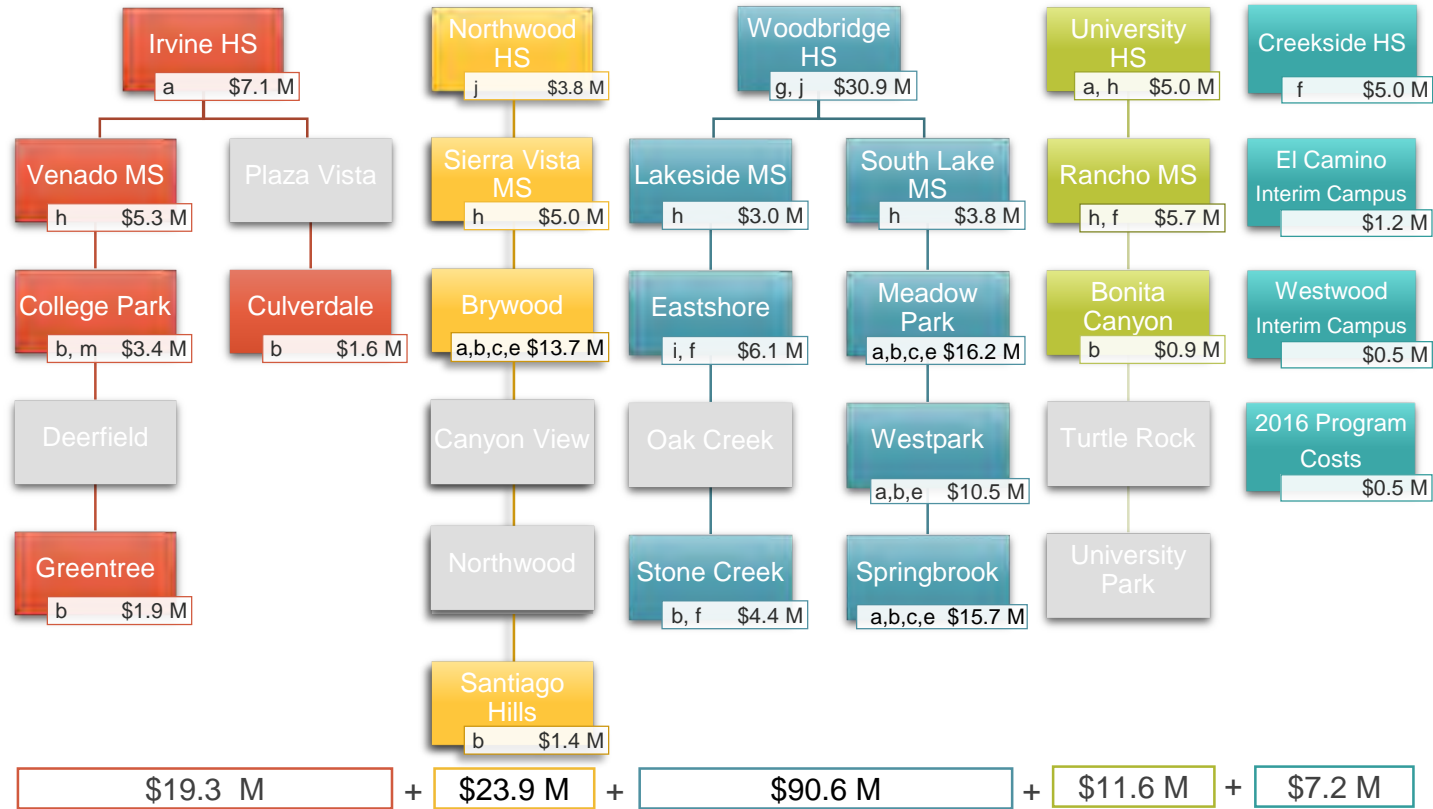
# BOND ISSUANCE UPDATE





## PROJECT TYPES

- a. Modernize facilities over 25 yrs of age
- b. Enclose open classrooms
- c. Construct Music Classrooms
- d. Construct Multipurpose Room
- e. Construct/Upgrade Food Service
- f. Construct Career Tech and Innovation/Design Labs
- g. Construct Visual and Performing Arts, Media Arts Elective Labs and New/Upgrade Theaters
- h. Construct/upgrade science labs and Elective Spaces
- i. Construct/Upgrade Kinder Classroom
- j. Construct all weather track and field
- k. Construct Classrooms to replace portables
- l. Construct Practice Gym
- m. Construct/Upgrade Site Specific Support Facilities



PROJECT COSTS

FUNDING

$$\$19.3 \text{ M} + \$23.9 \text{ M} + \$90.6 \text{ M} + \$11.6 \text{ M} + \$7.2 \text{ M} = \$152.6 \text{ M} \quad \text{vs} \quad \$151.8 \text{ M}$$

# Measure E Series 1 Projects and Costs

Bond Sale in 2016A

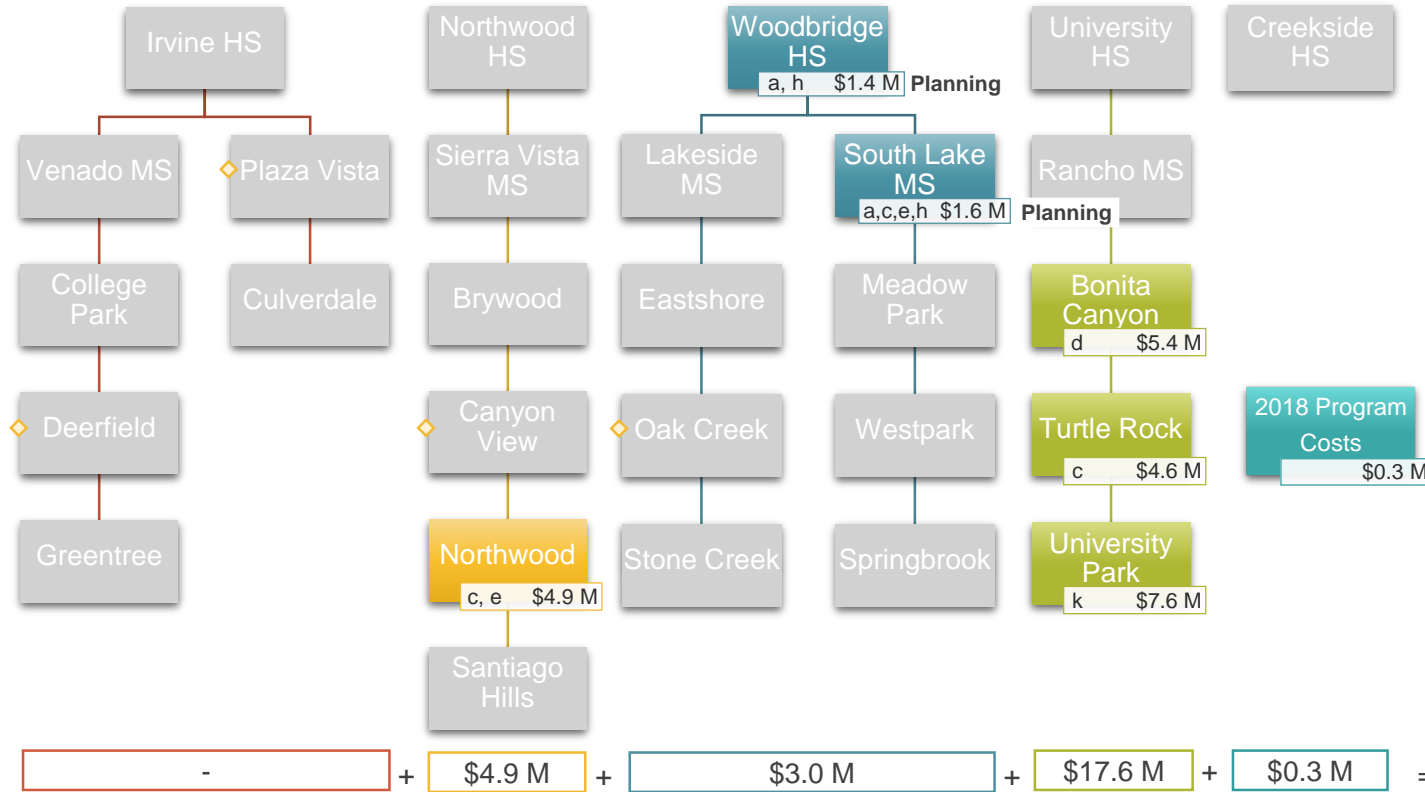
17 | June 4, 2019



## PROJECT TYPES

- a. Modernize facilities over 25 years of age
- b. Enclose open classrooms
- c. Construct Music Classrooms
- d. Construct Multipurpose Room
- e. Construct/Upgrade Food Service
- f. Construct Career Tech and Innovation/Design Labs
- g. Construct Visual and Performing Arts, Media Arts Elective Labs and New/Upgrade Theaters
- h. Construct/upgrade science labs and Elective Spaces
- i. Construct/Upgrade Kinder Classrooms
- j. Construct all weather track and field
- k. Construct Classrooms to replace portables
- l. Construct Practice Gym
- m. Construct/Upgrade Site Specific Support Facilities

◆ Sites that are not part of the first and second bond series



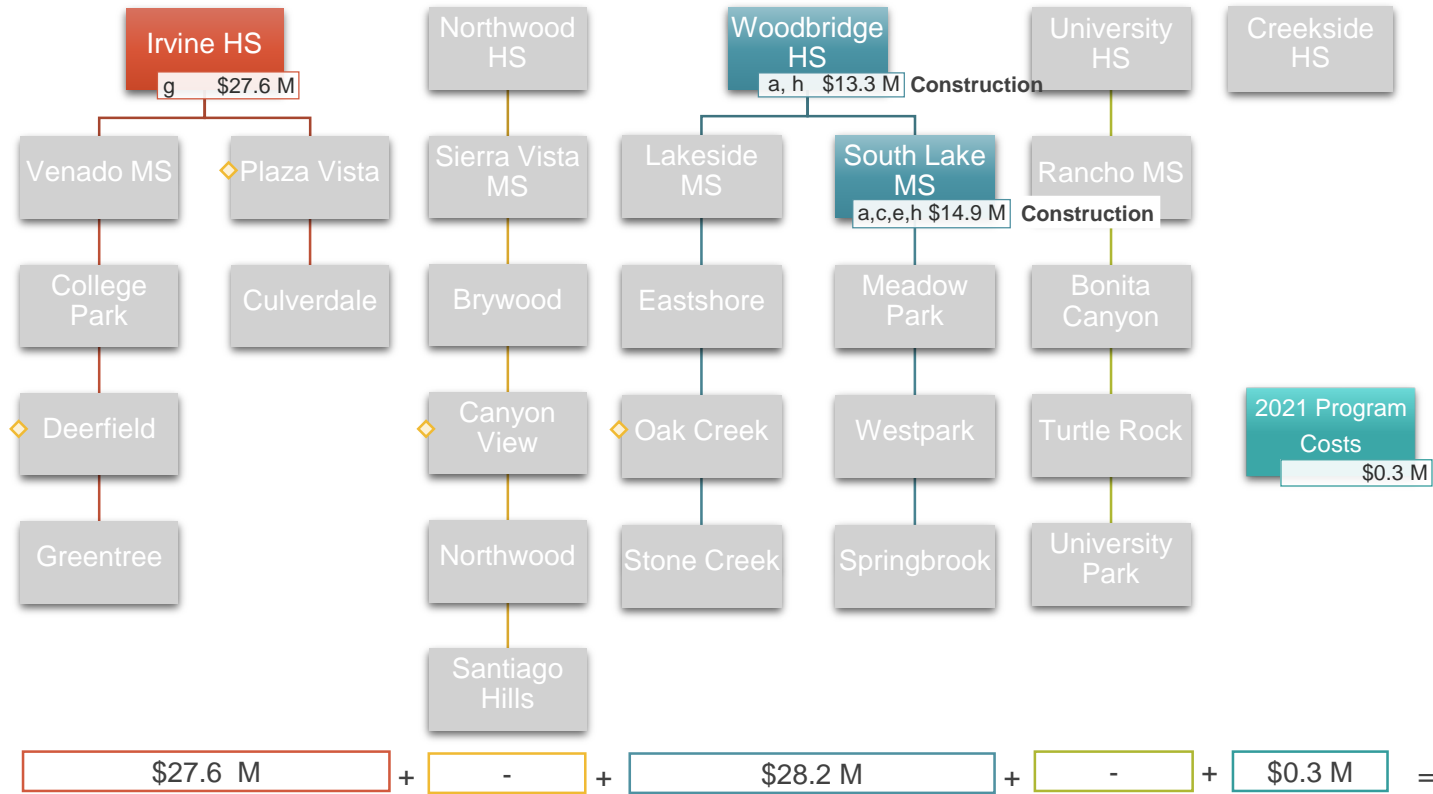
# Measure E Series **2** Projects and Costs

Bond Sale in 2018B



## PROJECT TYPES

- a. Modernize facilities over 25 years of age
  - b. Enclose open classrooms
  - c. Construct Music Classrooms
  - d. Construct Multipurpose Room
  - e. Construct/Upgrade Food Service
  - f. Construct Career Tech and Innovation/Design Labs
  - g. Construct Visual and Performing Arts, Media Arts Elective Labs and New/Upgrade Theaters
  - h. Construct/upgrade science labs and Elective Spaces
  - i. Construct/Upgrade Kinder Classrooms
  - j. Construct all weather track and field
  - k. Construct Classrooms to replace portables
  - l. Construct Practice Gym
  - m. Construct/Upgrade Site Specific Support Facilities
- ◆ Sites that are not part of the previous bond series



PROJECT COSTS

FUNDING

\$56.1 M

\$54.3 M

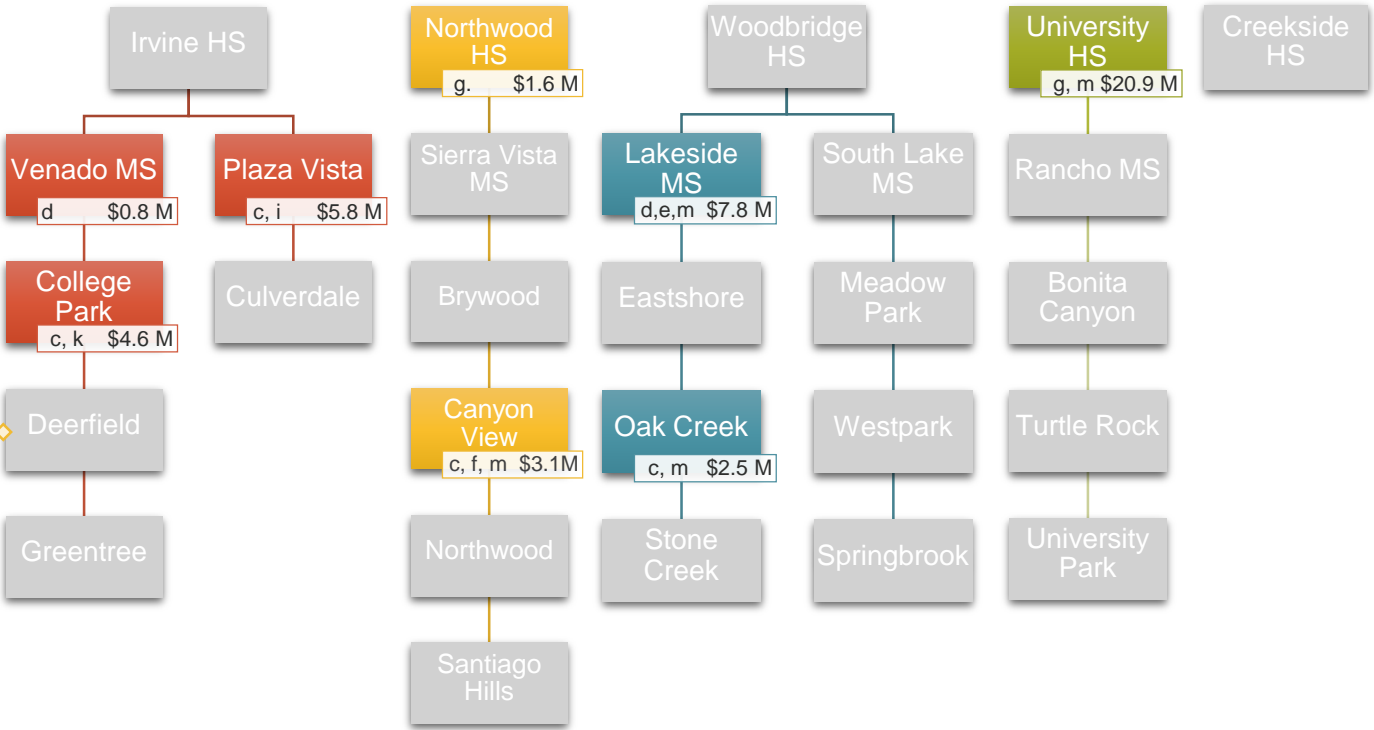
# Measure E Series 3 Projects and Costs

Pending Bond Sale Projected 2021



PROJECT TYPES

- a. Modernize facilities over 25 years of age
  - b. Enclose open classrooms
  - c. Construct Music Classrooms
  - d. Upgrade/Construct Multipurpose Room
  - e. Construct/Upgrade Food Service
  - f. Construct Career Tech and Innovation/Design Labs
  - g. Construct Visual and Performing Arts, Media Arts Elective Labs and New/Upgrade Theaters
  - h. Construct/upgrade science labs and Elective Spaces
  - i. Construct/Upgrade Kinder Classrooms
  - j. Construct all weather track and field
  - k. Construct Classrooms to replace portables
  - l. Construct Practice Gym at NHS \$3.9 M deferred at Board Meeting June 5, 2018
  - m. Construct/Upgrade Site Specific Support Facilities
- ◆ Site that is not part of the previous bond series

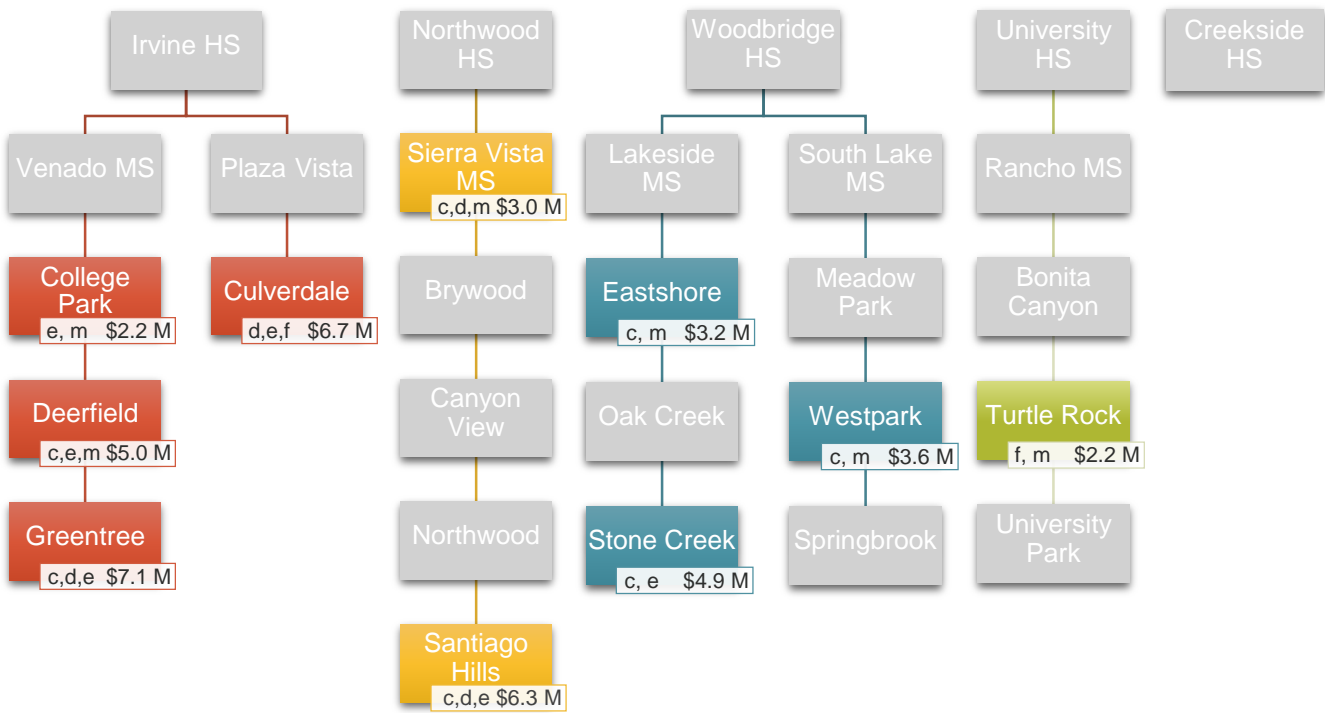


\$11.2 M	+	\$4.7 M	+	\$10.3 M	+	\$20.9 M	+	-	=	\$47.1 M	PROJECT COSTS	\$39.8 M	FUNDING
											Program Escalation +	\$11.0 M	
											Total Program Cost	\$58.1 M	



## PROJECT TYPES

- a. Modernize facilities over 25 yrs of age
- b. Enclose open classrooms
- c. Construct Music Classrooms
- d. Construct/Upgrade Multipurpose Room
- e. Construct/Upgrade Food Service
- f. Construct Career Tech and Innovation/Design Labs
- g. Construct Visual and Performing Arts, Media Arts Elective Labs and New/Upgrade Theaters
- h. Construct/upgrade science labs and Elective Spaces
- i. Construct/Upgrade Kinder Classrooms
- j. Construct all weather track and field
- k. Construct Classrooms to replace portables
- l. Construct Practice Gym
- m. Construct/Upgrade Site Specific Support Facilities CHS Project \$1.2 M deferred at Board Meeting June 5, 2018

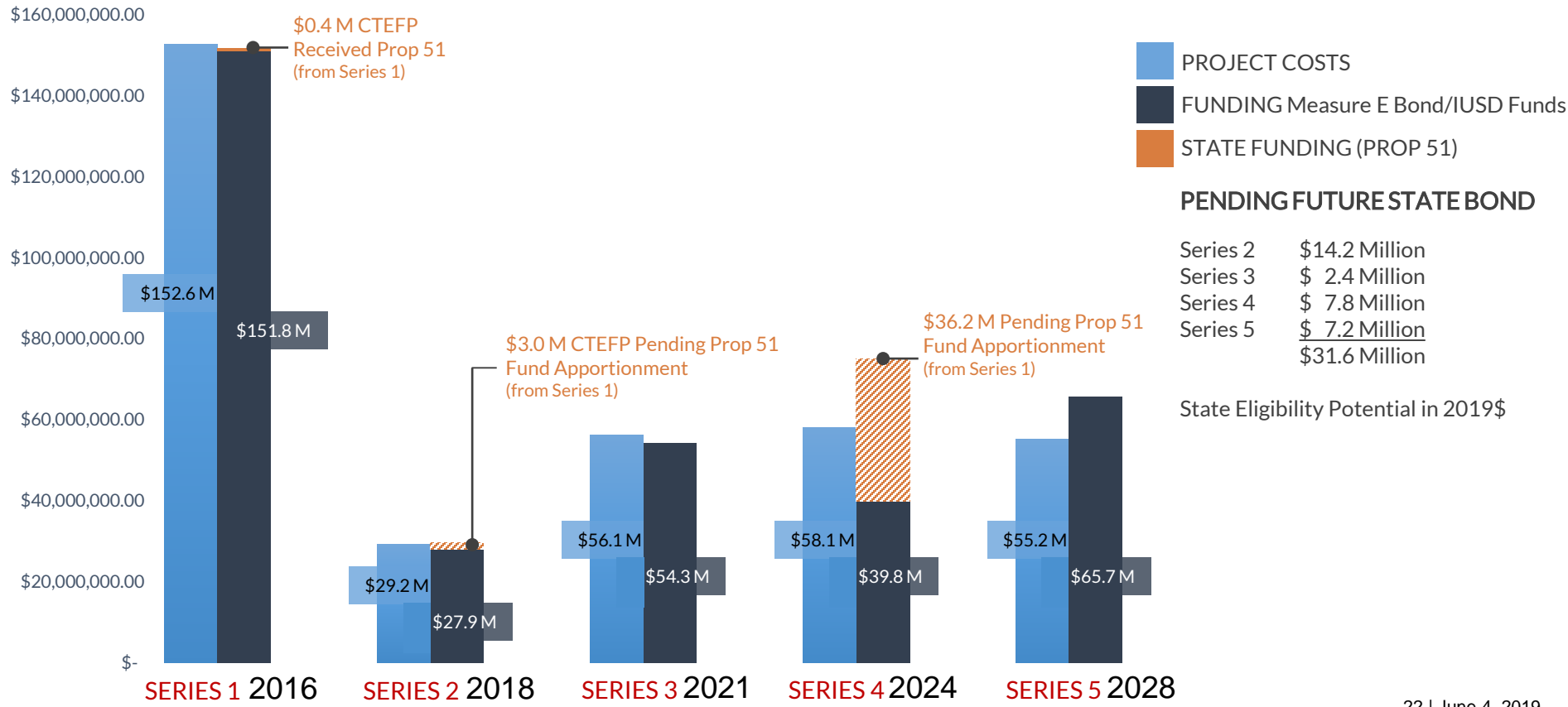


\$21.0 M	+	\$9.3 M	+	\$11.7 M	+	\$2.2 M	+	-	=	\$44.2 M	◀	\$65.7 M	
										Program Escalation +	\$11.0 M		
										Total Program Cost	\$55.2 M		

# Measure E Series Projects and Costs

Pending Bond Sale Projected 2028

# MEASURE E BY SERIES: PROJECT COST VS FUNDING



# MEASURE E SERIES 1 RESULTS

## ELEMENTARY SCHOOL

- |   |                      |
|---|----------------------|
| • Doors installed on open classrooms                    | 157 Classrooms       |
| • Modernized Building Square footage (sf)               | 178,000 sf           |
| • Student Collaboration Commons with Flexible Furniture | 41 Spaces/11 Schools |
| • New Design and Innovation Labs                        | 11 Labs              |
| • New Music / Flex Labs                                 | 10 Labs              |



# MEASURE E SERIES 1 RESULTS

## MIDDLE SCHOOL

- Modernized / New Science Labs 24 Labs

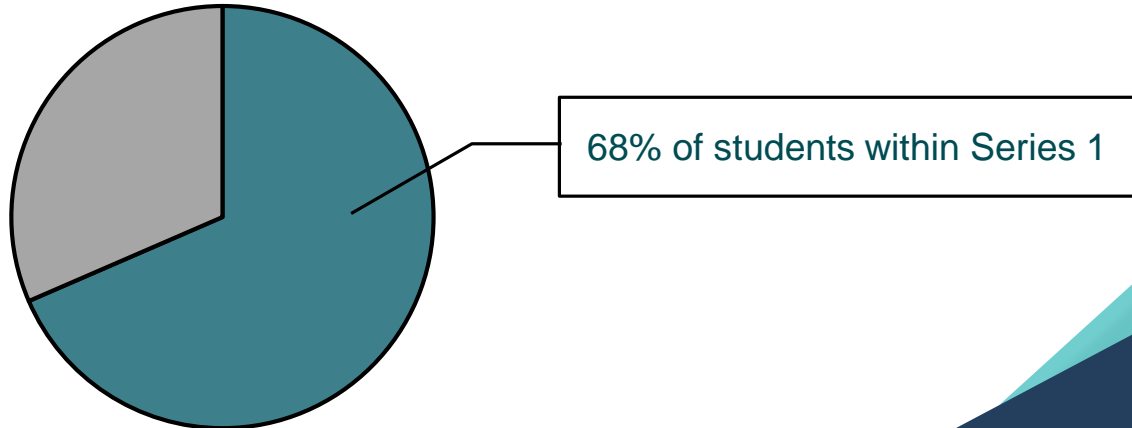
## HIGH SCHOOL

- Modernized / New Science and CTE Labs 21 Labs
- Modernized Building Square footage (sf) 50,000 sf
- New Synthetic Track & Field 2 Schools
- New Performing Arts Complex/Theater 1 School



# MEASURE E SERIES 1 RESULTS

- School Facilities Improvement District includes 25,000 IUSD students
  - Series 1 will serve 17,000 students
  - Series 2 through 5 will serve the remaining 8,000 students



# State Funding



# OFFICE OF PUBLIC SCHOOL CONSTRUCTION: LISTS DEFINED

## Step 1a: “Acknowledged” List

*When no State Funding is available*

- Project applications submitted beyond the Prop. 51 Bond Authority
- Subject to IUSD Board Resolution acknowledging exhaustion of funds
- *Waiting for future State Bond (2020/2022)*

**Series 2 projects start here**

## Step 1b: “Workload” List

*When State Funding is available*

- Project applications submitted to OPSC, waiting for staff review
- *Anticipate funding under Prop. 51*

**Series 1 has 23 projects on this list totaling \$36,282,404**



# OFFICE OF PUBLIC SCHOOL CONSTRUCTION: LISTS DEFINED

## Step 2: “Unfunded (Lack of AB 55)” List

- Project applications have been fully reviewed by OPSC staff
- Subject to bi-annual Priority Funding Letter
- *Project waiting for State Bond sale (Fall/Spring)*

**Series 1 has 1 project on this list totaling \$3,000,000**

## Step 3: “Apportioned” List

- Project applications that were previously on the Unfunded (Lack of AB 55) list
- Submitted bi-annual Priority Funding Letter
- Shovel-Ready within 90 days of moving to Apportioned list
- *Ready for Fund Release request*

**Series 1 has 0 projects on this list**



# STATE FUNDING – MEASURE E PROJECTS

## Step 1a: FUTURE SUBMITTALS (Future State Bond)

Site Name	Estimated Funding
Bonita Canyon ES (Series I: MOD)	\$255,335
Greentree ES (Series I: MOD)	\$277,787
Lakeside MS (Series I: MOD)	\$271,370
Northwood ES (Series II: NC)	\$914,775
Northwood ES (Series II: MOD)	\$1,062,530
South Lake MS (Series II: MOD)	\$3,772,153
South Lake MS (Series II: NC)	\$348,327
Turtle Rock (Series II: NC)	\$914,775
University Park ES (Series II: MOD)	\$503,767
Woodbridge HS (Series II: MOD)	\$6,736,026
<b>Total State Funding Applications</b>	<b>\$15,086,494</b>

## STEP 2: OPSC UNFUNDED APPROVAL LIST (Prop. 51)

Site Name	SAB Approval Date	Amount Approved
Woodbridge HS (CTEFP: PAC)	05.22.2019	\$3,000,000
<b>Total State Funded Applications</b>		<b>\$3,000,000</b>

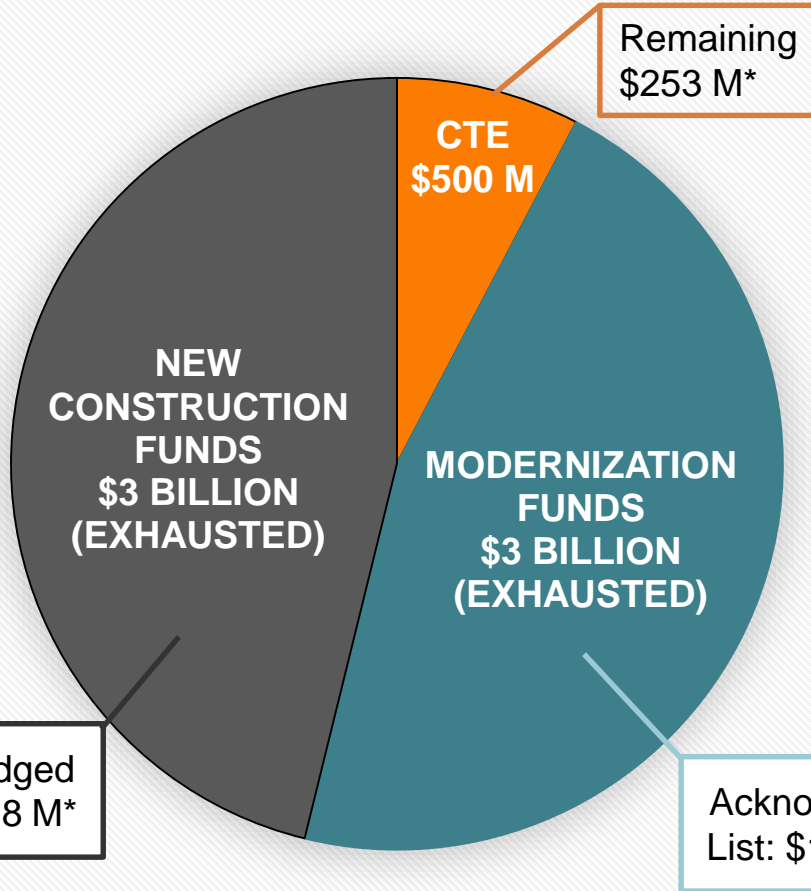
## STATE FUNDED PROJECTS (Prop. 51)

Site Name	Fund Release Date	Amount Received
Creekside High School (CTEFP: Construction Technology)	01.16.2019	\$439,400
<b>Total State Funded Applications</b>		<b>\$439,400</b>

## STEP 1b: OPSC WORKLOAD LIST (Prop. 51)

Site Name	Estimated Funding
Santiago Hills ES (MOD)	\$335,448
College Park ES (MOD)	\$470,630
Culverdale ES (MOD)	\$597,498
Stone Creek ES (MOD)	\$1,411,210
Stone Creek ES (NC)	\$681,602
Irvine HS (MOD)	\$3,874,257
University HS (MOD)	\$654,092
Creekside HS (NC)	\$1,579,717
Sierra Vista MS (NC)	\$1,572,100
South Lake MS (NC)	\$870,227
Eastshore ES (MOD)	\$694,305
Springbrook ES (MOD)	\$3,097,577
Westpark ES (MOD)	\$3,415,758
Eastshore ES (NC)	\$835,854
Venado MS (NC)	\$2,231,969
Rancho San Joaquin MS (MOD)	\$543,617
Rancho San Joaquin MS (NC)	\$1,108,967
Brywood ES (MOD)	\$2,870,668
Woodbridge HS (NC)	\$3,041,419
Springbrook ES (NC)	\$1,626,156
Meadow Park ES (NC)	\$1,149,109
Brywood ES (NC)	\$1,094,082
Meadow Park ES (MOD)	\$2,526,142
<b>Total State Funding Applications</b>	<b>\$36,282,404</b>

# STATE SCHOOL FACILITY PROGRAM – PROP. 51



APPROVED BY CALIFORNIA VOTERS  
NOVEMBER 8, 2016

OTHER  
PROP 51

- \$500.0 M CHARTER SCHOOLS
- \$2.0 B COMMUNITY COLLEGE

Future State Bond:

- AB48: March 2020 (\$13B) & November 2022 (\$TBD) Ballots; Currently in review with Senate



# AB48 (O'DONNELL): FUTURE STATE BONDS

## Kindergarten – Community College Public Education Facilities Bond Acts of 2020 and 2022

- Highlights
  - Replacement of school buildings at least 75 years old
  - Specified assistance for small school districts
  - Testing and remediation of lead levels in water fountains and sinks (drinking and food prep)
  - Financial Hardship eligibility raised to \$10M in bond authority capacity
  - Specified assistance to districts and county offices impacted by natural disaster (requires Governor to declare state of emergency)
- Adjusts requirements for joint-use projects that serve K-12
- Adjusts provisions for community college facilities funding



# FUTURE FUNDING OPPORTUNITIES

- State Facilities Bond of 2020 (tentative \$13B)
- State Facilities Bond of 2022 (\$TBD)
- Career Technical Education Facilities Program (CTEFP)
- CalRecycle Tire-Derived Program Grant (TDP Grant)
- Irvine Ranch Water District Rebates



# Facilities Master Plan Vision



# FACILITIES MASTER PLAN PRINCIPLES



Respond to the needs of each student



Empower students to succeed



Support professional development



Nurture healthy people & healthy, safe environments



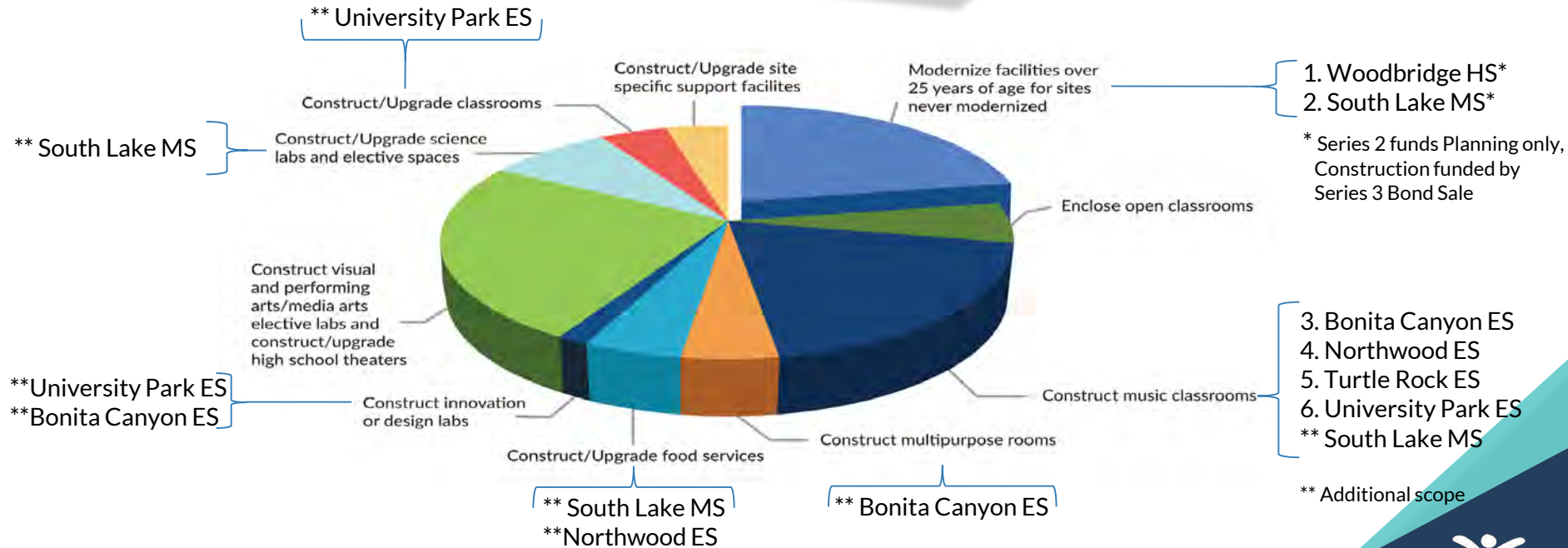
Establish the highest quality programs



Celebrate the uniqueness of Irvine's communities



# PROJECT CATEGORIES - SERIES 2 / 6 SCHOOLS



# SERIES 2 PROJECTS BY PRIORITIES

- Address older school facilities (modernize State Eligible Buildings)
  - (2) Schools Woodbridge HS, South Lake MS
- New/Upgrade Science, Design Labs
  - (3) Schools University Park ES, Bonita Canyon ES  
(Repurpose existing MPR), South Lake MS
- New/Upgrade Classrooms with Student Collaboration Spaces
  - (1) School University Park ES
- New Music Classrooms
  - (5) Schools South Lake MS, University Park ES, Northwood ES,  
Turtle Rock ES, Bonita Canyon ES (Includes new MPR)



# Series 2 Projects



# SERIES 2 IMPLEMENTATION / BUDGET



## PLANNING AND CONSTRUCTION

**BONITA CANYON ES** *New MPR*

**UNIVERSITY PARK ES**

*New Classrooms*

**TURTLE ROCK ES** *New Music*

**NORTHWOOD ES**

*New Music / Food Service*

## PLANNING AND CONSTRUCTION



## PLANNING ONLY (Up to DSA Approval)

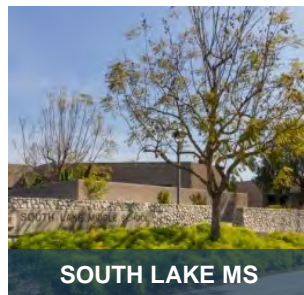
**WOODBIDGE HS**

*Modernize Two Buildings / Interim Housing*

**SOUTH LAKE MS**

*Modernize Entire Campus / Interim Housing*

## PLANNING ONLY (Up to DSA Approval)



## INITIAL BUDGET

Current (06/04/2019)	
Bond Series 2	\$ 41,000,000
Bond Series 1	\$ (13,115,495)
<b>FUNDS Available</b>	<b>\$ 27,884,505</b>
<b>CURRENT BUDGET</b>	<b>\$ 25,861,065</b>
<b>UNDER FUNDS Available</b>	<b>\$ 2,023,440</b>



# BONITA CANYON ES New MPR

Stage and MPR

Storage

Student and Staff  
Restrooms



# BONITA CANYON ES New MPR



Stage and MPR

Storage

Student and Staff  
Restrooms





# BONITA CANYON ES Reconfigure MPR into Design Lab

New Interior Finishes

AV Upgrades

New Casework





# UNIVERSITY PARK ES New Classroom Building, Replace Some Portables, Reconfigure Design Lab/Student Support

New "Villa" Classroom Building

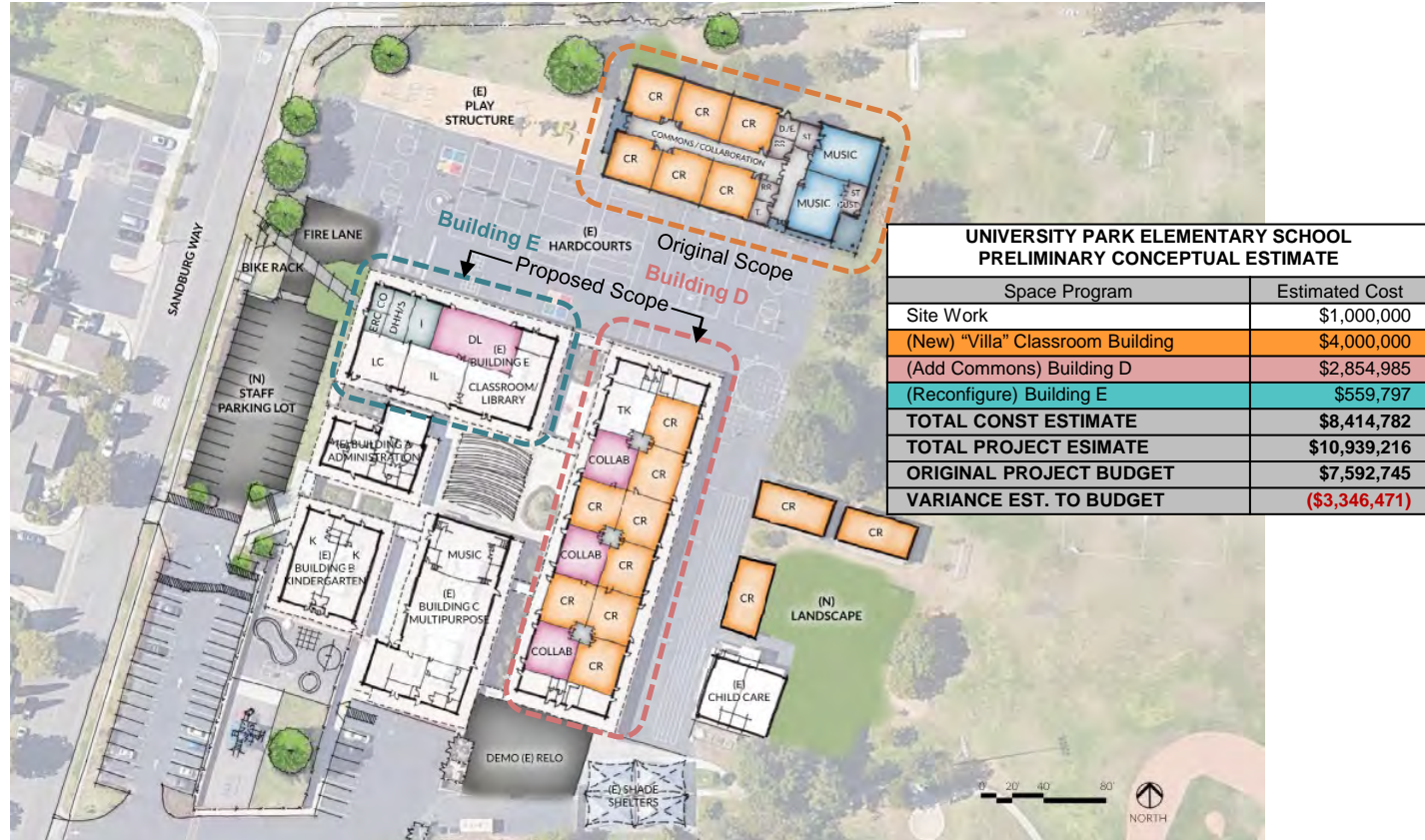
Add Commons in Existing Classroom Building/Acoustic Walls

Reconfigure Design Lab/Student Support

Remove Some Portables

Furniture Allocation

New Fire Access and Upgraded Parking





# WOODBIDGE HS Modernization

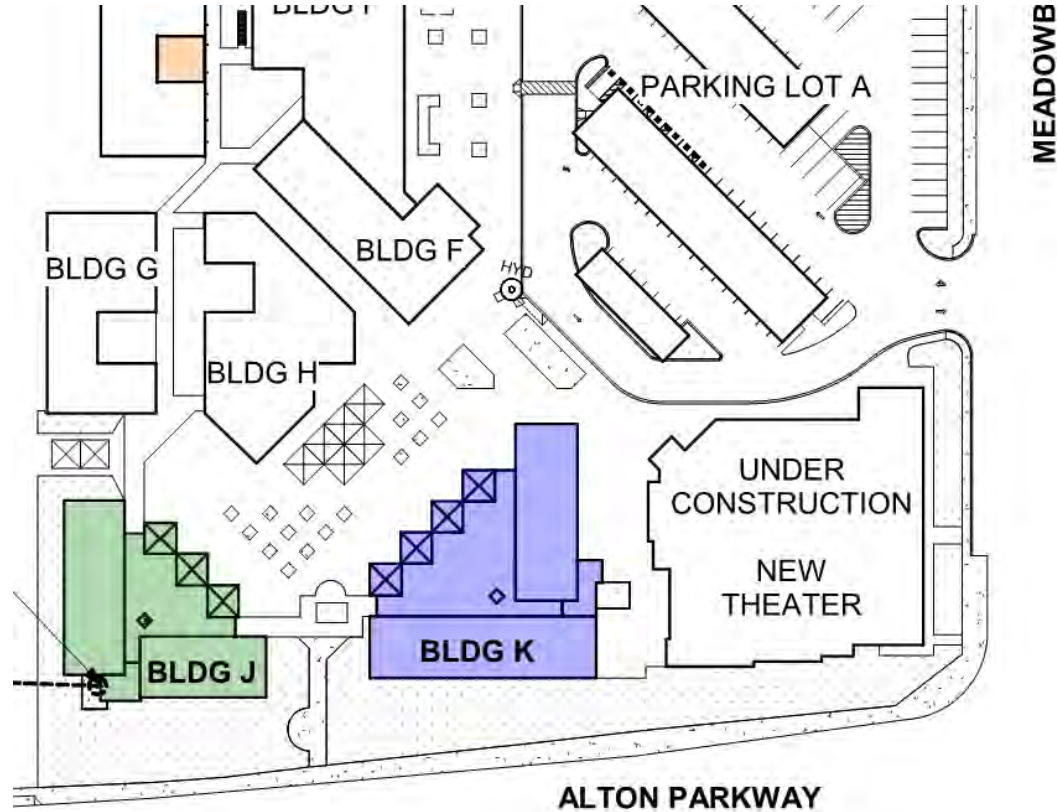
Heating and AC System  
Upgrades

New Interior Finishes,  
Audio Visual System

New Lighting and  
Controls

Reconfigure Teacher  
Walls

Furniture Allocation





# SOUTH LAKE MS Modernization

Heating and AC System  
Upgrades

New Interior Finishes,  
Audio Visual System

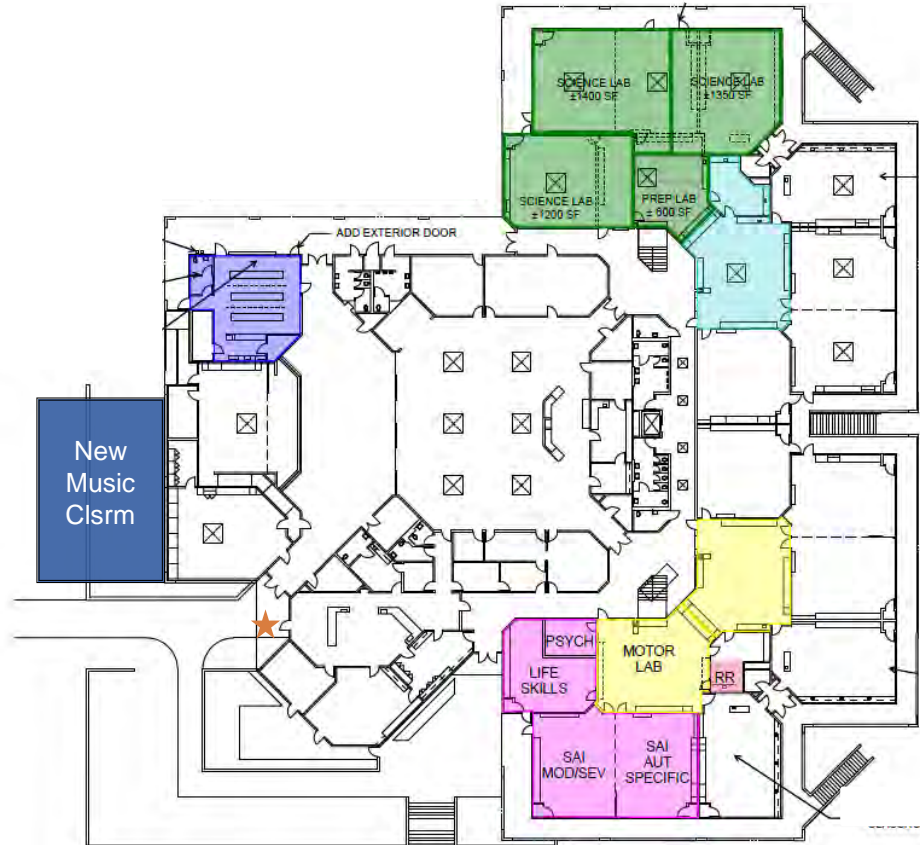
Reconfigure (4) Clrms  
to (3) Science Labs

Reconfigure/Upgrade  
Food Service

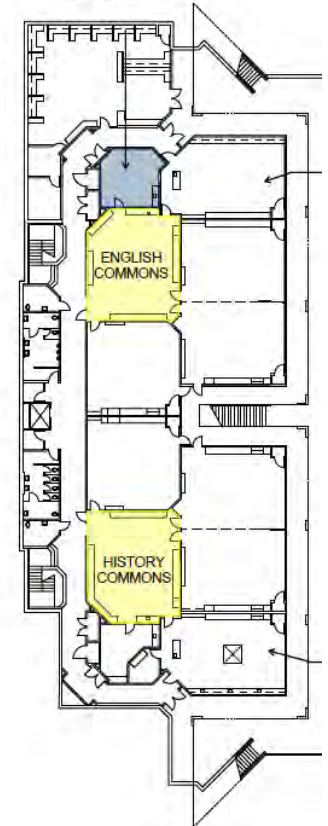
Special Education Life  
Skills Space

Code Upgrades: Fire  
Alarm, Accessibility

Furniture Allocation



First Level



Lower Level



# SOUTH LAKE MS New Music Building

Music Classroom  
Addition

Instrument Storage

Meets Ed Spec Size of  
Room and Acoustics

Curb Appeal and  
Landscaping

Furniture Allocation





# TURTLE ROCK ES New Classroom Building

New Music / Classroom  
Addition

Located Near Upper  
Grade Students /  
Restrooms

Meets Ed Spec Size of  
Room and Acoustics

Instrument Storage

Code Upgrades: Fire  
Alarm, Accessibility

All Gender Restrooms

Furniture Allocation



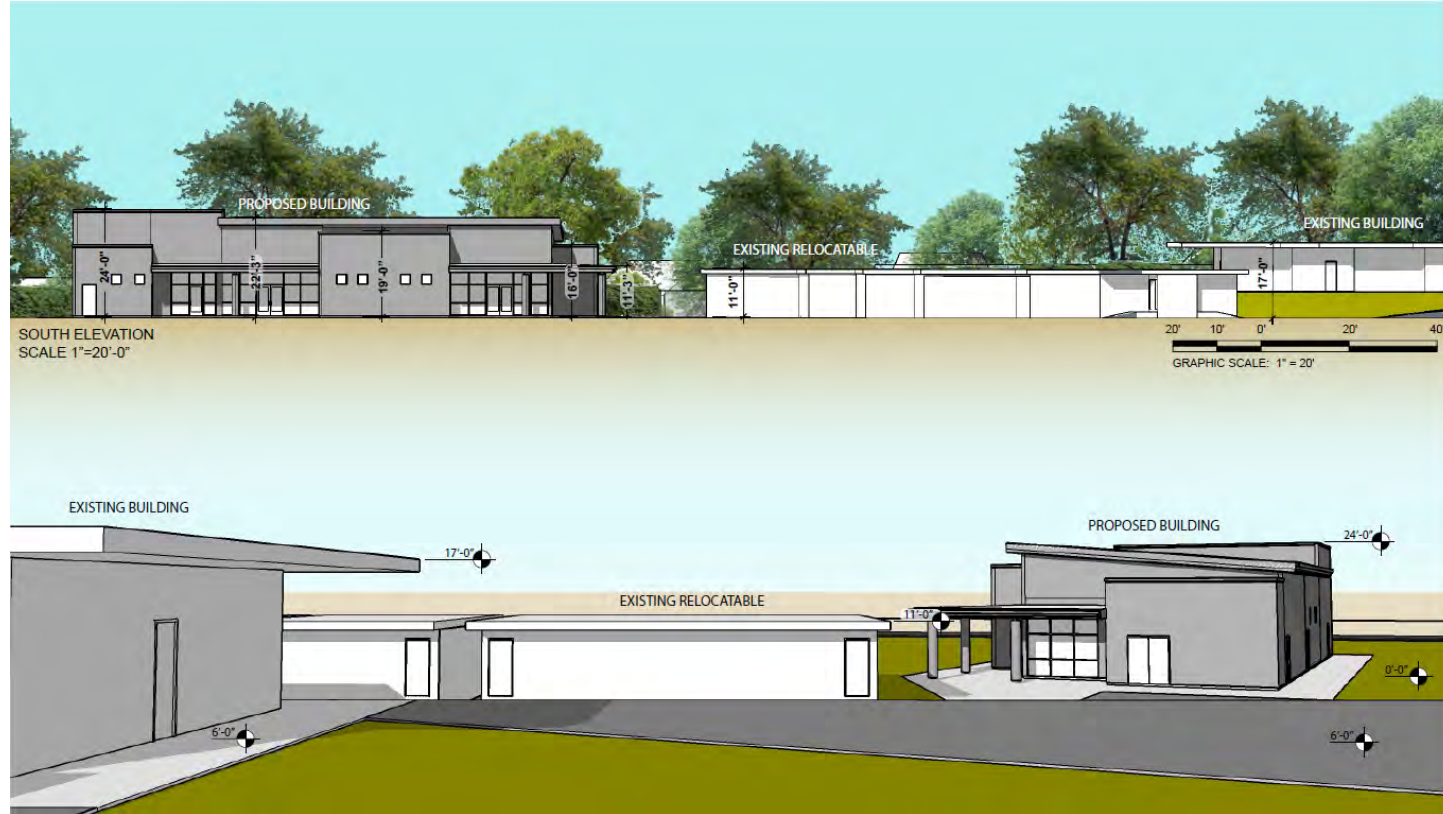


# TURTLE ROCK ES New Classroom Building

Landscaping Screening  
Backside of Building

Lower Level Placement  
Minimizes Height  
Difference

Measure E Series 5  
Design/Innovation Lab,  
Replaces Some Portables





# NORTHWOOD ES New Classroom Building

New Music / Classroom  
Addition

Located Near Upper  
Grade Students

Meets Ed Spec Size of  
Room and Acoustics

Instrument Storage and  
All Gender Restroom

Code Upgrades: Fire  
Alarm, Accessibility

Furniture Allocation





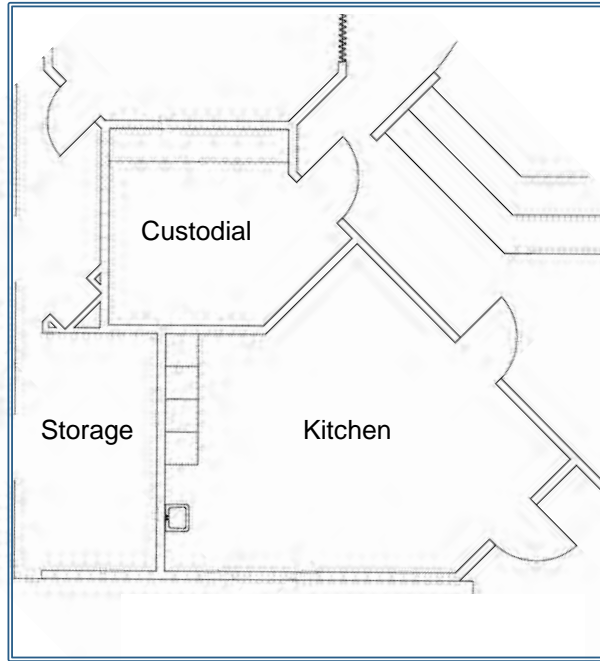
# NORTHWOOD ES New Classroom Building

Replace One Aging  
Relos with New Relo

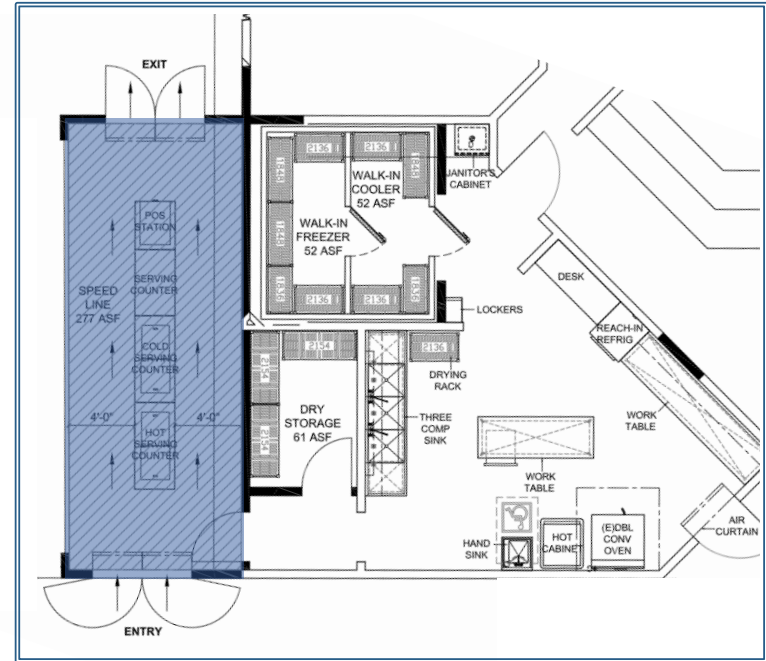
Expand/Reconfigure  
Food Services



# NORTHWOOD ES Expand and Reconfigure Food Service



EXISTING FLOOR PLAN



PROPOSED EXPANSION/RECONFIG. FLOOR PLAN

# Series 1 and 2 Projects: Schedule



# SERIES 1 AND 2 PROJECTS

2019

2020

2021

## SERIES 1

Woodbridge HS – Performing Arts Center

Construction

Spring 2020

Springbrook ES – Modernization / Music Classroom

Construction

Late Summer 2020

Woodbridge HS – Field Improvement

Design

Bid

Construction

Spring 2020

## SERIES 2

Bonita Canyon ES, Northwood ES, Turtle Rock ES, and University Park ES

Design/DSA

Bid

Construction

Late Summer 2021

South Lake ES and Woodbridge HS

Design/DSA

Winter 2019



# Series 1 Projects: Relocated Schools

- Brywood ES
- Meadow Park ES
- Springbrook ES








# RELOCATED SCHOOLS

- **Brywood ES: Westwood Basics**
  - Staff and students will return to Brywood ES for 2019/2020 school year
  - Westwood Basics will resume providing District support spaces
- **Meadow Park ES: El Camino School**
  - Staff and students will return to Meadow Park ES for 2019/2020 school year
- **Springbrook ES: El Camino School**
  - Staff and students will relocate to El Camino School for 2019/2020 school year
  - Transportation will be offered to students





# MEADOW PARK ES 2018 to 2019 Comparison

Pick-up / Drop-off Locations	Bus Passes Distributed May 2018	Bus Passes Distributed May 2019	Student Ridership as of 5/15/19*
Windjammer Park 	51	54	40
Smokestone Park 	51	74	46
Meadow Park ES 	174	193	98
Clearbrook Park 	42	57	55
Blue Lake Park 	118	152	108
<b>Total</b>	<b>436</b>	<b>530</b>	<b>347</b>
			7 buses in use

**63%** of the student population\*\*

\*Three (3) day average of AM Ridership (from 5/13/19 - 5/15/2019)

\*\* 553 Student Enrollment as of 5/3/2019 sans SDC

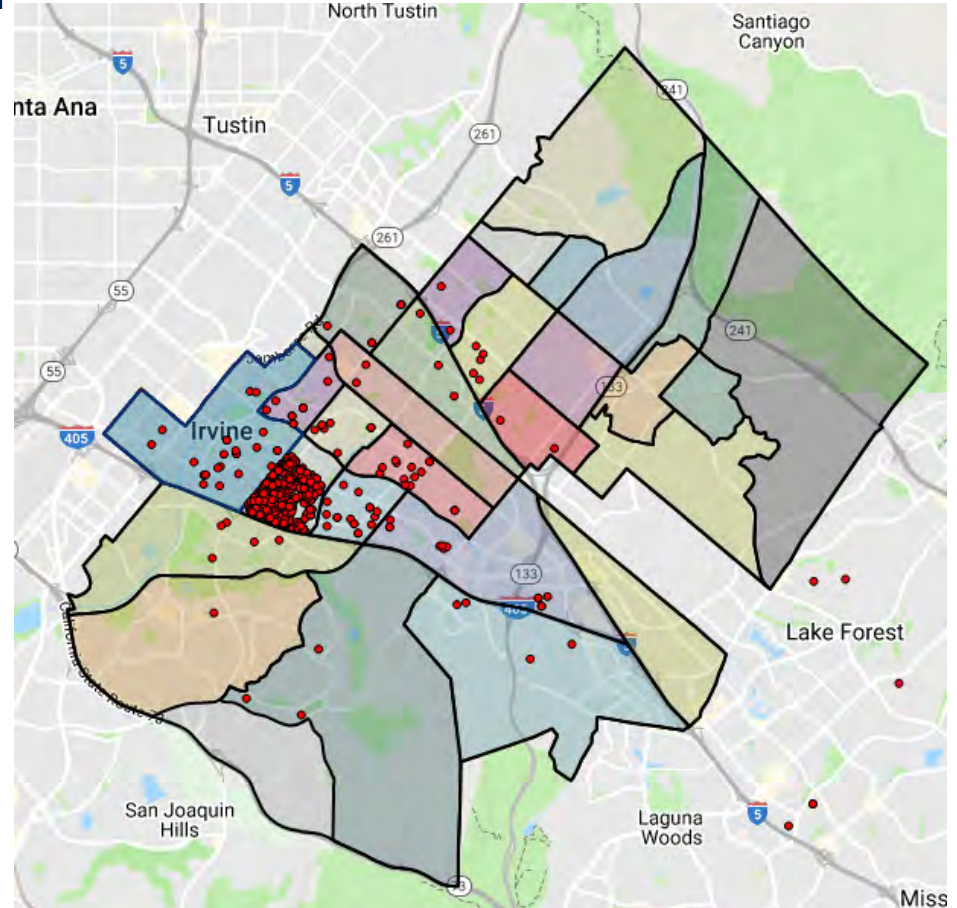




# MEADOW PARK ES Student plot

## 2018/2019 Student Plot

ES Attendance Area	Students
Meadow Park	458
Springbrook	20
Culverdale/Westpark	19
Eastshore	12
Oak Creek	7
Stone Creek	7
Out of District	7
College Park	6
Plaza Vista	4
University Park	2
Brywood	2
Deerfield	2
Northwood	2
Alderwood	1
Canyon View	1
Greentree	1
Turtle Rock	1
Vista Verde	1
<b>Total Students</b>	<b>553</b>





# SPRINGBROOK ES Bus passes projected in May 2019

Pick-up / Drop-off Locations*	# of Bus Passes
-------------------------------	-----------------

Springbrook ES ★	254
------------------	-----

Wintermist Park ★	16
-------------------	----

Total	270
-------	-----

5-6 Buses estimated

**49%** of the student population\*

\*Additional after school drop-off at Boys and Girls Club

\*\*547 Student Enrollment as of 5/3/2019 sans SDC

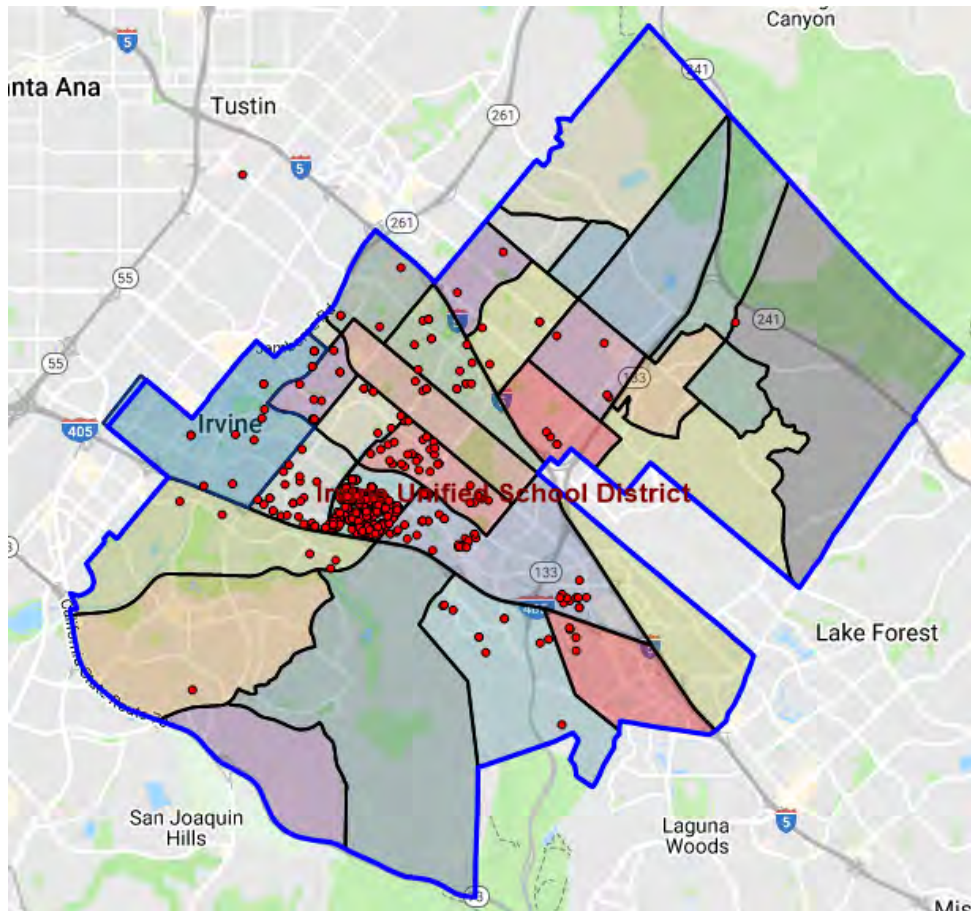




# SPRINGBROOK ES Student plot

## 2018/2019 Student Plot

ES Attendance Area	Students
Springbrook	362
Oak Creek	39
Meadow Park	31
Eastshore	28
Culverdale/Westpark	18
Greentree	15
Plaza Vista	12
Stone Creek	6
Alderwood	5
College Park	5
Cypress Village	4
Deerfield	4
Northwood	4
Out of District	4
Woodbury	3
Brywood	2
Loma Ridge	2
Eastwood	1
Santiago Hills	1
University Park	1
<b>Total Students</b>	<b>547</b>



# Series 1 Projects: Recently Completed

- Northwood HS
- Irvine HS
- University HS
- Lakeside MS
- Rancho San Joaquin MS
- Sierra Vista MS
- South Lake MS



# OVERVIEW (Series 1)



## **COMPLETED: Thirteen schools**

- Bonita Canyon ES, Culverdale ES, Greentree ES, Santiago Hills ES, College Park ES, Stone Creek ES, Lakeside MS, Rancho San Joaquin MS, Sierra Vista MS, South Lake MS, Irvine HS, University HS, Northwood HS

## **SCHEDULED TO COMPLETE AUGUST 2019: Six schools**

- Brywood ES, Meadow Park ES, Eastshore ES, Westpark ES, Venado MS, Creekside HS

## **SCHEDULED TO COMPLETE SPRING 2020: One school**

- Woodbridge HS (Performing Arts Center and Field Improvements)

## **SCHEDULED TO COMPLETE AUGUST 2020: One school**

- Springbrook ES





# NORTHWOOD HS Field Improvements



## PROJECT INCLUDES:

- New synthetic track & field
- New sports equipment for track & field
- Site and ADA improvements
- New portable bleachers



# IRVINE HS Classroom Modernization



## PROJECT INCLUDES:

- Upgraded classrooms/science lab
- New interior finishes
- Upgraded audiovisual systems
- New fire alarm, public address
- New lighting



# UNIVERSITY HS Science Lab Upgrades

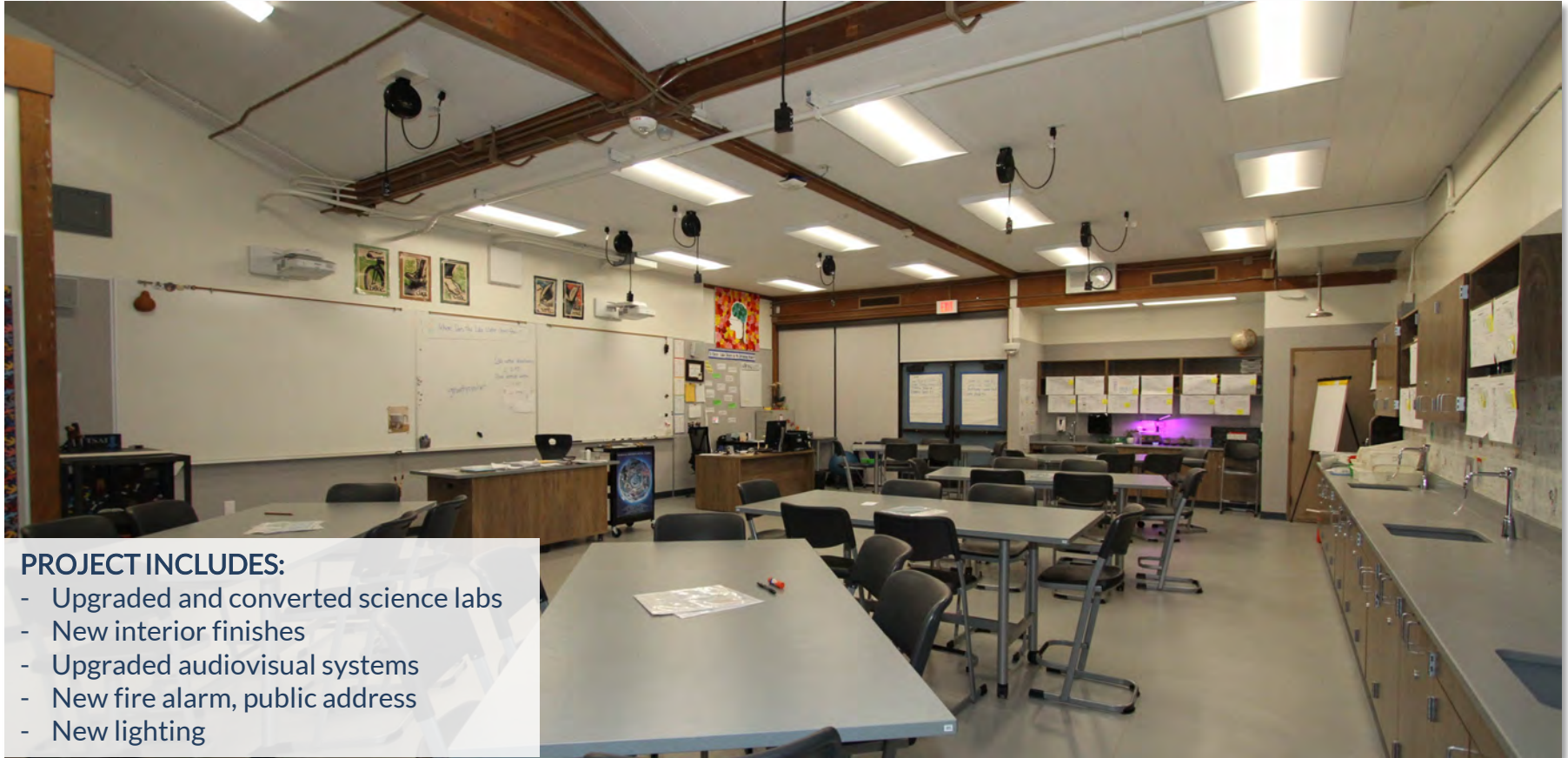


## PROJECT INCLUDES:

- Upgraded science labs
- New interior finishes
- Upgraded audiovisual systems
- New fire alarm, public address
- New lighting

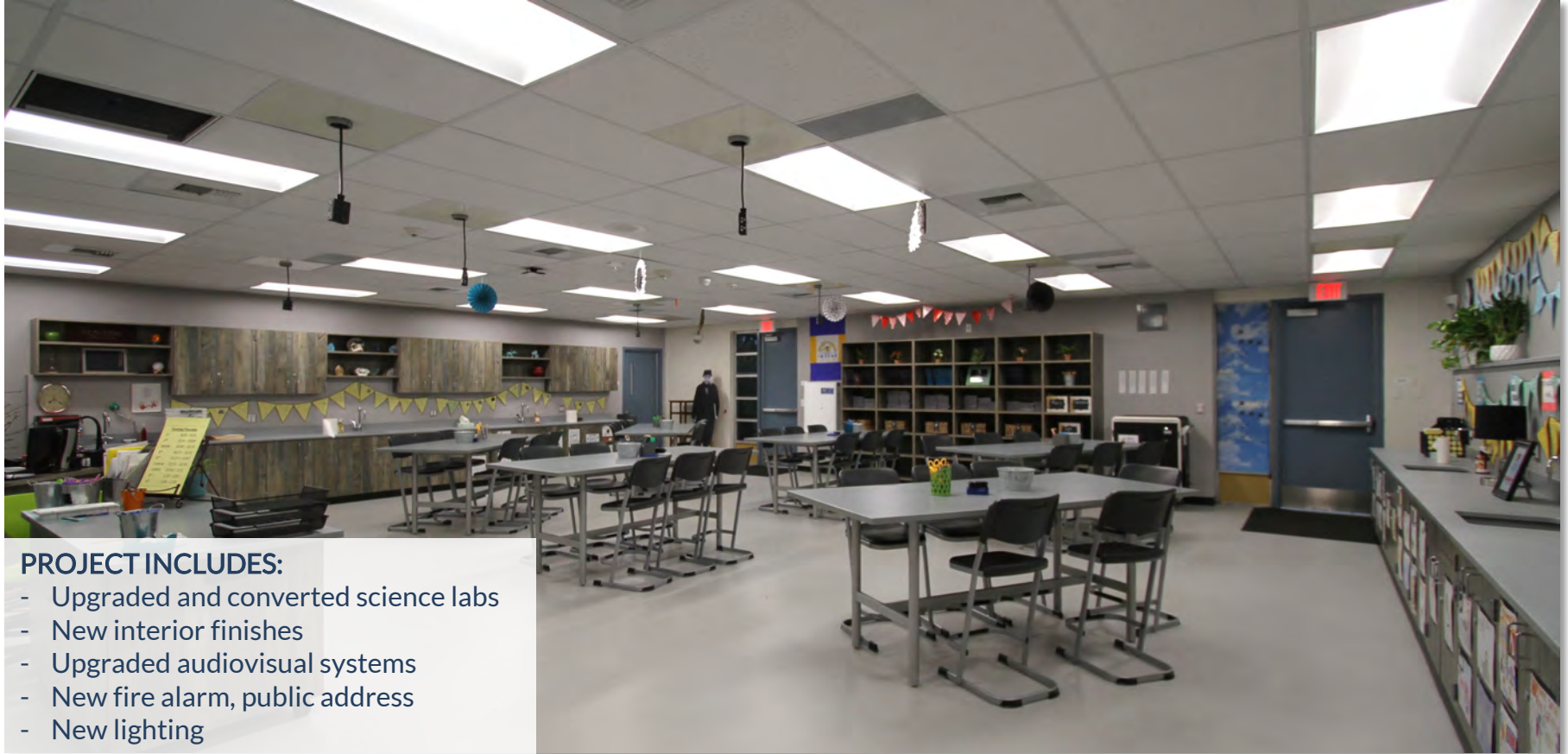


# LAKESIDE MS Science Lab Upgrades and Conversions





# RANCHO SAN JOAQUIN MS Science Labs Upgrades



## PROJECT INCLUDES:

- Upgraded and converted science labs
- New interior finishes
- Upgraded audiovisual systems
- New fire alarm, public address
- New lighting



# RANCHO SAN JOAQUIN MS New Science Labs



New science classroom building

New science lab



## PROJECT INCLUDES:

- Two (2) new science classrooms
- New teachers' workroom
- Sitework and ADA improvements



# SIERRA VISTA MS New Science Labs



New science classroom building (right)

New science lab



## PROJECT INCLUDES:

- Four (4) new science classrooms
- New teachers' workroom
- Sitework and ADA improvements



# SOUTH LAKE MS New Science Labs



New science classroom building

New science lab



## PROJECT INCLUDES:

- Two (2) new science classrooms
- New teachers' workroom
- Sitework and ADA improvements

# Series 1 Projects: Under Construction

- Creekside HS
- Eastshore ES
- Venado MS
- Brywood ES
- Meadow Park ES
- Westpark ES
- Woodbridge HS





# CREEKSIDE HS Expansion and Renovation



New science lab

Video production classroom



## PROJECT INCLUDES:

- Three (3) new classrooms
  - Building & Construction Trades (CTE pathway)
  - Health Science & Medical Technology (CTE pathway)
- One (1) renovated classroom
  - Video Production (CTE Pathway)



# CREEKSIDE HS Expansion and Renovation



View from Harvard Avenue and Barranca Parkway

New classroom buildings / Outdoor work area





# EASTSHORE ES Expansion and Renovation



New classroom

New kindergarten play area



## PROJECT INCLUDES:

- Two (2) new classrooms / collaboration area
- Two (2) kindergarten classrooms / activity center
- New staff offices
- New Design Lab
- New kinder play / Site & ADA improvements

# EASTSHORE ES Expansion and Renovation



New kindergarten activity area

Classroom expansion





# VENADO MS New Science Classrooms



New science classroom building

New science classroom



## PROJECT INCLUDES:

- Five (5) new science classrooms
- New teachers' workroom
- New student restrooms
- Site & ADA improvements



# BRYWOOD ES Modernization



Modernized classroom

Collaboration area



## PROJECT INCLUDES:

- Enclose classrooms
- Modernize classrooms
- New collaboration areas
- New Design Lab and Innovation Lab
- Expand nutrition services



# BRYWOOD ES New Music Classrooms



New music classroom building

New music classrooms

## PROJECT INCLUDES:

- Three (3) new classrooms
- Instrument storage
- PE Storage
- Restroom
- Site & ADA improvements





# MEADOW PARK ES Modernization



Collaboration area

Modernized classroom



## PROJECT INCLUDES:

- Enclose classrooms
- Modernize classrooms
- New collaboration areas
- New Design Lab and Innovation Lab
- Expand nutrition services



# MEADOW PARK ES New Music Classrooms



New music classroom building

New music classroom



## PROJECT INCLUDES:

- Three (3) new classrooms
- Instrument storage
- PE Storage
- Restroom
- Site & ADA improvements



# WESTPARK ES Modernization



New nutrition services building

New collaboration area



## PROJECT INCLUDES:

- Enclose classrooms
- Modernize classrooms
- New collaboration areas
- Expand nutrition services
- Site & ADA improvements

# WESTPARK ES Modernization



Classroom modernization

New collaboration area





# WOODBIDGE HS Performing Arts Center



# WOODBIDGE HS Performing Arts Center



# WOODBIDGE HS Performing Arts Center



# WOODBIDGE HS Performing Arts Center



Concrete placement for footings

Concrete placement for footings



# Series 1 Projects: Scheduled to Start

- Springbrook ES
- Woodbridge HS





# SPRINGBROOK ES Modernization

Upgrade Heating and  
AC Systems

New Interior Finishes  
Paint / Flooring

New Fire Alarm, Public  
Address Systems

New Light Fixtures

Accessibility Upgrades:  
Restrooms, Signage

New Audio Visual Sys,  
Network Upgrades





# SPRINGBROOK ES Modernization

Enclose Classrooms,  
Upgraded Commons

New Whiteboards,  
Tackable Surfaces

Flexible Furniture  
Allocation

Renovated Design Lab,  
Innovation Lab

Renovated Student  
Support Services Area

Expanded Kitchen





# SPRINGBROOK ES Music Classroom

Three (3) New  
Classrooms

Instrument Storage

Restroom

Custodial Room

PE Storage

Site Improvements



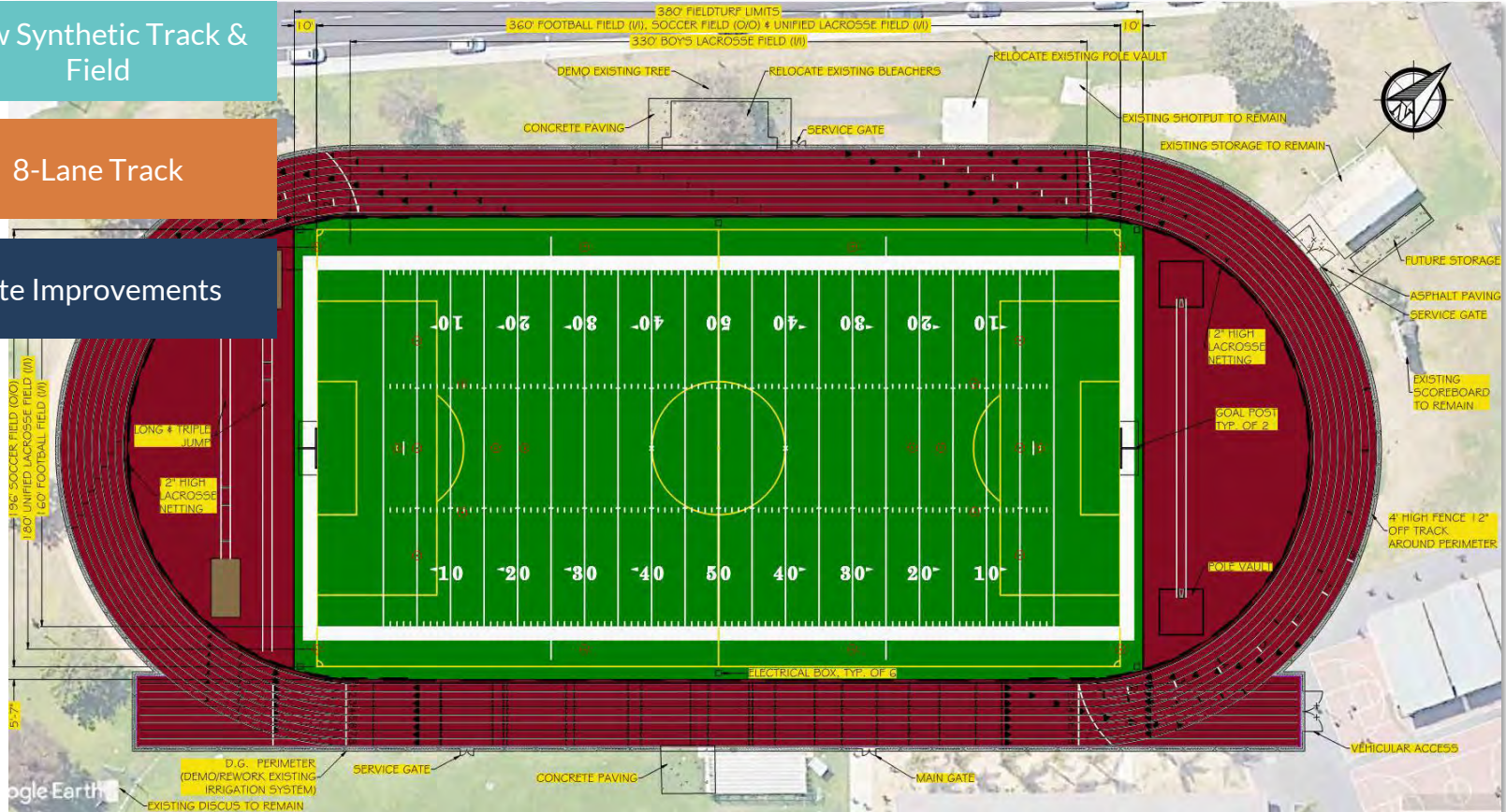


# WOODBIDGE HS Field Improvements

New Synthetic Track & Field

8-Lane Track

Site Improvements



# Communications



# COMMUNICATIONS

- Project Updates      Proposed Project Graphics Showing Series 1-5  
Posted on each Measure E School Micro-site
- Annual Newsletter      August 2018, sent to Community Members
- COC      Annual Report – January 28, 2019, Audit Findings
- Completed Stakeholder Outreach Series 2 Projects
  - 4 Community Meetings
  - 22 School Site Planning Meetings
  - 22 Department Reviews: M&O, IT, Security, Food Service





*QUESTIONS?*