

Irvine Unified School District

Facilities Study Session

Measure E

Series 1, Series 2 and AFAP

Board of Education

Paul Bokota
Lauren Brooks
Betty Carroll, President
Ira Glasky
Sharon Wallin

June 2, 2020



AGENDA

- **Introductions**
- **Financing / Funding**
- **Budget**
 - Series 1, Series 2 and Bond Series Overview
- **State Funding**
- **Master Schedule**
- **Projects In Design**
 - Augmented Funds to Accelerate Projects (AFAP) and Series 2
- **Projects Under Construction**
 - Series 2 and Series 1
- **Non-Measure E Improvements - Update**
 - Learning Environment Enhancement Projects (LEEP)



MEASURE E TEAM

Facilities Planning and Construction Services			Fiscal Services
Joe Chapin* Director, Construction Services	Dana Grudem* Supervisor, Facilities Planning	Christa DeBoer** Supervisor, Facilities/Construction	Sherry McGrew Analyst, Financial Construction Analysis
Jesse Barron* Assistant Director, Facilities Planning	Robert Ramirez* Facilities Planner	Spencer Jordan** Building Inspector, DSA Class 1	Jenny Chau Accountant, Facilities Projects
Ed Hernandez* Supervisor, Construction Services	Dee Mitchell* Specialist, Construction Services	Bethany Short** Specialist, Construction Services	Caroline Kim Technician, Accounting
Bruce Monroe* Supervisor, Construction Projects	Cathie Rain* Administrative Assistant II	** Indicates full-time assignment during 2019/20 Fiscal Year on Measure E projects. Full-time assignments will continue in 2020/21 Fiscal Year.	
Freddy Medina* Supervisor, Construction Projects	* Indicates part-time assignment during 2019/20 Fiscal Year due to increase in Measure E projects. Part-time assignments will decrease in 2020/21 Fiscal Year.		



COC MEMBERS

Citizens Oversight Committee (COC)		
Todd Cope (Vice Chair) Parent Active in Parent Teacher Org.	Patti Ragland Bona-fide Taxpayers Assoc. Rep.	Kenric Stone Member of Community At-Large
Adele Heuer Member of Community At-Large	Jeffrey Schmeh Parent / Guardian	Betty Jo Woollett Senior Citizen Org. Rep.
Richard Knowland Business Org. Rep.	Kristi Smemoe (Chair) Parent / Guardian	
Ryan Larson Parent Active in Parent Teacher Org.	Connie Stone Parent Active in Parent Teacher Org.	

- **Meet Quarterly (next meeting July 27, 2020)**
- **COC webpage iusd.org/COC**



Financing / Funding



MEASURE E FINANCING

- Original Measure E Bond capacity based on annual Assessed Valuation growth within the SFID of 3% - 4.5% to be issued in four (4) Series
 - Yielding projected project funding of \$250.8 Million up to \$319.0 Million
 - Measure E initial budget set at \$250.8 Million
- Annually review Assessed Valuation to determine growth and potential impact to bonding capacity
- Based on growth within the SFID, assumptions increased to annual Assessed Valuation growth of 3.5%
 - Yielding projected project funding of \$272.3 Million
 - Increase number and frequency of Series from four (4) to five (5)



REVISED MEASURE E BOND SERIES (3.5% GROWTH)

- Series 1 funds received October 26, 2016
- Series 2 funds received September 13, 2018

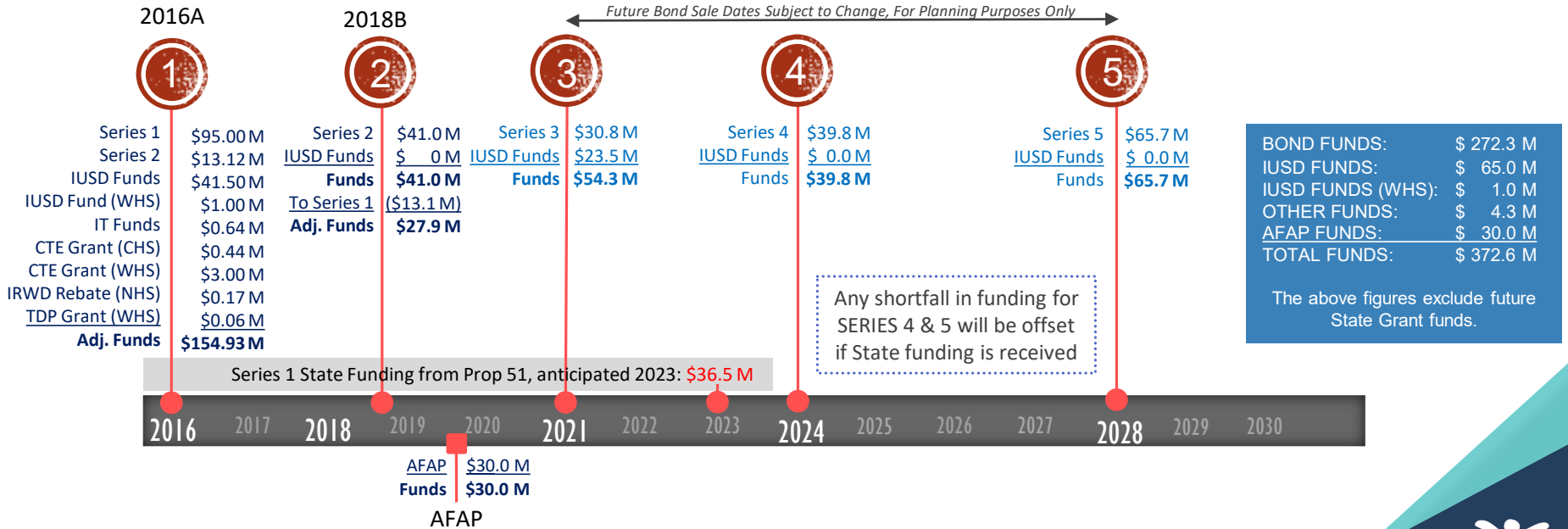
<u>ORIGINAL</u>	
2016 (Series 1)	\$ 95.0M
2021 (Series 2)	\$ 51.9M
2025 (Series 3)	\$ 49.4M
2029 (Series 4)	\$ 54.5M
<u>TOTAL</u>	<u>\$ 250.8M</u>

<u>ISSUED/PROPOSED</u>	
2016 (Series 1)	\$ 95.0M
2018 (Series 2)	\$ 41.0M
2021 (Series 3)	\$ 30.8M
2024 (Series 4)	\$ 39.8M
2028 (Series 5)	\$ 65.7M
<u>TOTAL</u>	<u>\$272.3M*</u>

*Maximum Bond Capacity is \$319.0M



FUNDING TIMELINE



CURRENT BONDS AND DISTRICT FUNDS



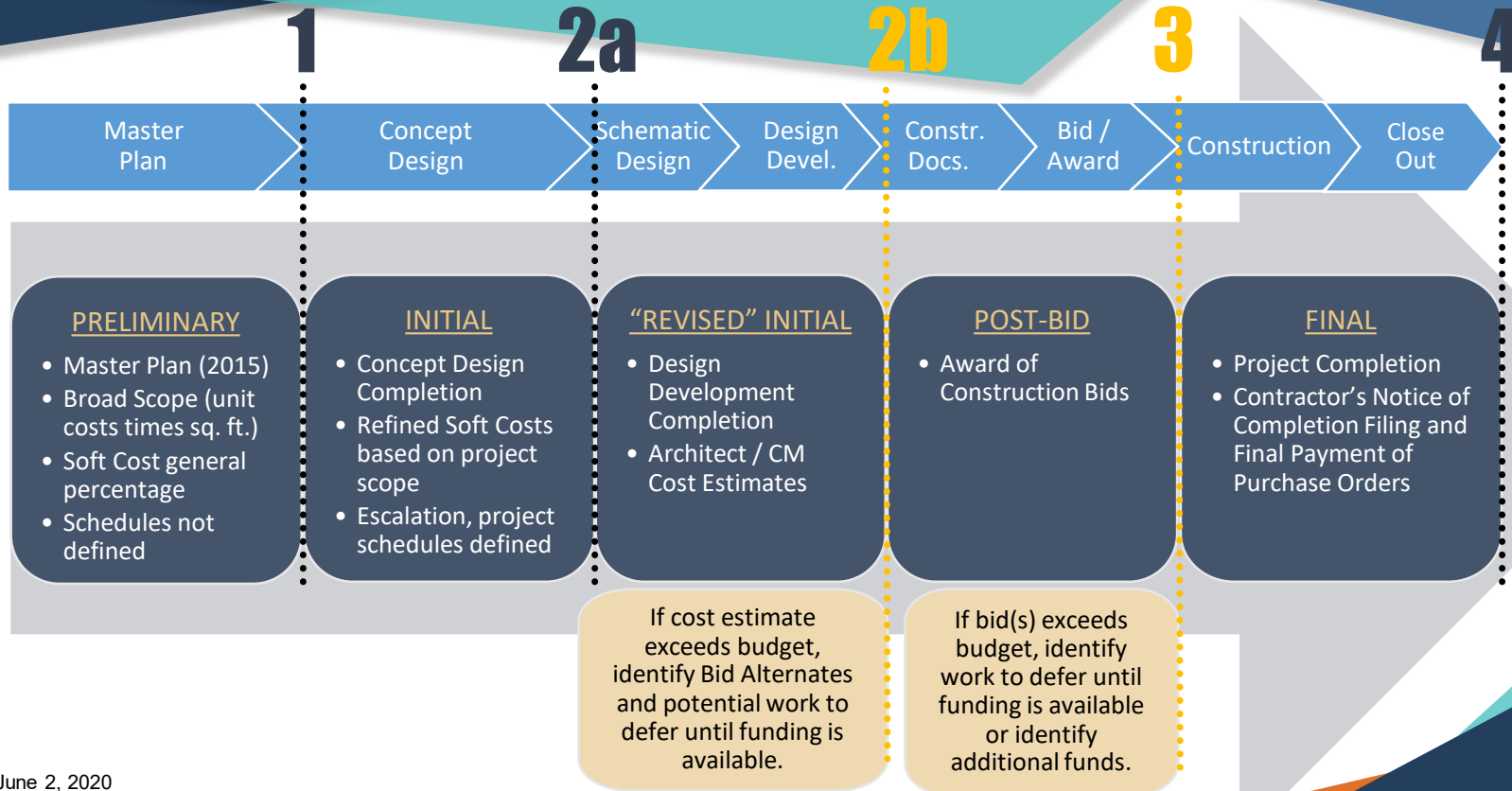
FUNDS COMMITTED (Series 1 , 2 and AFAP)	\$ 212,814,764
Series 1 Funds	\$ 154,930,259
Bond Series 2016A (Series 1)	\$ 95,000,000
Bond Series 2018B (Series 2)	\$ 13,115,495
District Funds (Funds 35, 40, and 86-1)	\$ 41,500,000
District Fund 40 (WHS Field Improvements)	\$ 1,000,000
IT Infrastructure (LAN Project)	\$ 643,875
State Grant (CTEFP ¹ - CHS)	\$ 439,400
State Grant (CTEFP ¹ - WHS)	\$ 3,000,000
Rebate (IRWD)	\$ 174,591
CalRecycle TDP ² Grant (WHS Field Improvements)	\$ 56,898
Series 2 Funds	\$ 27,884,505
Bond Series 2018B (Series 2)	\$ 27,884,505
AFAP Funds	\$ 30,000,000

Notes: 1. CTEFP - Career Technical Education Facilities Program | 2. TDP - Tire-Derived Product

Budget



BUDGET PROCESS



POST-BID BUDGET VERSUS FINAL BUDGET



Completed Projects*		Post-Bid Budget	Final Budget	Post-Bid & Final Budget Variance
1	Bonita Canyon ES - Enclose Classrooms	\$ 912,184	\$ 868,451	\$ 43,733
2	College Park ES - Enclose Classrooms	\$ 3,424,255	\$ 3,248,271	\$ 175,984
3	Culverdale ES - Enclose Classrooms	\$ 1,633,772	\$ 1,601,117	\$ 32,655
4	Greentree ES - Enclose Classrooms	\$ 2,042,302	\$ 1,913,892	\$ 128,410
5	Irvine HS - Modernizaton	\$ 7,143,636	\$ 6,922,265	\$ 221,371
6	Lakeside MS - Science Labs	\$ 2,972,572	\$ 2,892,181	\$ 80,391
7	Northwood HS - Field Improvements	\$ 3,815,212	\$ 3,692,908	\$ 122,304
8	Rancho San Joaquin MS - Science Labs	\$ 5,680,277	\$ 5,289,332	\$ 390,945
9	Santiago Hills ES - Enclose Classrooms	\$ 1,498,668	\$ 1,427,186	\$ 71,482
10	South Lake MS - Science Labs	\$ 3,759,011	\$ 3,557,805	\$ 201,206
11	Stone Creek ES - Enclose Classrooms/Expansion	\$ 4,423,481	\$ 4,295,488	\$ 127,993
12	University HS - Modernization	\$ 5,002,422	\$ 4,628,058	\$ 374,364
13	Westwood Basics Interim	\$ 509,966	\$ 411,938	\$ 98,028
TOTALS		\$ 42,817,757	\$ 40,748,892	\$ 2,068,865

*Represents 13 of the 32 current Measure E projects



Budget

Series 1 Projects



FUND SUMMARY / FORECASTED BUDGET (Series 1)

Adjustment (10/26/2016)	
Bond Series 1	\$ 95,000,000
IUSD Funds	\$ 29,600,000
IUSD Funds 1st Adj.	\$ 6,800,000
FUNDS	\$ 131,400,000

Adjustment (06/05/2018)	
Bond Series 1	\$ 95,000,000
IUSD Funds	\$ 29,600,000
IUSD Funds 1st Adj.	\$ 6,800,000
IUSD Funds 2nd Adj.	\$ 5,100,000
IUSD IT Infrastructure	\$ 643,875
CTE Grant (CHS)	\$ 348,920
Bond Series 2	\$ 13,115,495
FUNDS Approved	\$ 150,608,290

Current (04/27/2020)	
Bond Series 1	\$ 95,000,000
IUSD Funds	\$ 29,600,000
IUSD Funds 1st Adj.	\$ 6,800,000
IUSD Funds 2nd Adj.	\$ 5,100,000
IUSD IT Infrastructure	\$ 643,875
CTE Grant (CHS)	\$ 439,400
Bond Series 2	\$ 13,115,495
IRWD Rebate (NHS)	\$ 174,591
Fund 40 to WHS Field	\$ 1,000,000
CTE Grant (WHS)	\$ 3,000,000
TDP Grant (WHS)	\$ 56,898
FUNDS Available	\$ 154,930,259
CURRENT BUDGET	\$ 150,836,437
<i>SURPLUS FUNDS</i>	<i>\$ 4,093,822</i>



CURRENT PROJECT BUDGETS (Series 1)

✓ Enclose Classrooms (6 schools)	\$ 13,354,406
Bonita Canyon ES, College Park ES, Culverdale ES, Greentree ES, Santiago Hills ES, Stone Creek ES	
✓ High School Modernizations (2 schools)	\$ 11,550,323
Irvine HS, University HS	
✓ Expansions (2 schools)	\$ 11,164,999
Eastshore ES, Creekside HS	
• Elementary School Modernizations (4 schools)	\$ 46,360,048
✓ Brywood ES, ✓ Meadow Park ES, Springbrook ES, ✓ Westpark ES	
✓ High School Field Improvements (2 schools)	\$ 6,667,008
Northwood HS, Woodbridge HS	



CURRENT PROJECT BUDGETS (Series 1)

-continued-

✓ Middle School Science Classrooms (5 schools) Lakeside MS, Rancho San Joaquin MS, Sierra Vista MS, South Lake MS, Venado MS	\$ 21,929,077
• New Theater (1 school) Woodbridge HS	\$ 27,910,257
• Music Classroom Buildings (3 schools) ✓Brywood ES, ✓Meadow Park ES, Springbrook ES	\$ 9,757,653
• Interim Campuses (2 schools) El Camino, ✓Westwood Basics	\$ 1,642,666
• Program Costs	\$ 500,000
<hr/>	
TOTAL PROGRAM BUDGET	\$ 150,836,437



CONSTRUCTION CHANGE ORDERS (Series 1)



Final Change Order Percentages

School		Original Contract	Final Contract	Change Orders	Change Order %	School		Original Contract	Final Contract	Change Orders	Change Order %
1	Bonita Canyon ES	\$ 687,833	\$ 661,920	\$ (25,913)	-3.77%	12	Lakeside MS	\$ 2,279,702	\$ 2,214,866	\$ (64,836)	-2.84%
2	College Park ES	\$ 1,947,472	\$ 1,997,707	\$ 50,235	2.58%	13	Rancho San Joaquin MS	\$ 4,201,968	\$ 4,102,266	\$ (99,702)	-2.37%
3	Culverdale ES	\$ 1,004,045	\$ 1,020,602	\$ 16,557	1.65%	14	Westpark ES	\$ 7,535,025	\$ 7,612,852	\$ 77,827	1.03%
4	Greentree ES	\$ 1,263,711	\$ 1,240,335	\$ (23,376)	-1.85%	15	Brywood ES - Mod	\$ 8,022,047	\$ 8,634,679	\$ 612,632	7.64%
5	Santiago Hills ES	\$ 1,053,407	\$ 1,050,915	\$ (2,492)	-0.24%	16	Brywood ES - Music	\$ 2,842,214	\$ 2,773,341	\$ (68,873)	-2.42%
6	Stone Creek ES	\$ 3,155,560	\$ 3,113,229	\$ (42,331)	-1.34%	17	Meadow Park ES - Mod	\$ 9,640,387	\$ 9,856,858	\$ 216,471	2.25%
7	Northwood HS	\$ 2,946,419	\$ 3,055,203	\$ 108,784	3.69%	18	Meadow Park ES - Music	\$ 2,889,679	\$ 2,838,289	\$ (51,390)	-1.78%
8	Irvine HS	\$ 4,704,255	\$ 4,843,227	\$ 138,972	2.95%	19	Eastshore ES	\$ 4,522,529	\$ 4,597,990	\$ 75,461	1.67%
9	University HS	\$ 3,533,004	\$ 3,519,126	\$ (13,878)	-0.39%	20	Venado MS	\$ 3,798,615	\$ 3,813,274	\$ 14,659	0.39%
10	Sierra Vista MS	\$ 3,643,560	\$ 3,526,896	\$ (116,664)	-3.20%	21	Creekside HS	\$ 3,681,144	\$ 3,598,072	\$ (83,072)	-2.26%
11	South Lake MS	\$ 2,753,376	\$ 2,688,937	\$ (64,439)	-2.34%	TOTALS		\$76,105,952	\$76,760,584	\$ 654,632	0.86%



Budget

Series 2 Projects



FUND SUMMARY / FORECASTED BUDGET (Series 2)

- **Series 2 Projects**

- Group 1 (Bonita Canyon ES and Turtle Rock ES) Bids received 5/14/2020
- Group 1 Post-Bid Budgets will be complete late June 2020
- Group 2 (Northwood ES and University Park ES) Bids due late 2020 / early 2021

Initial Budget (01/09/2019)		
Bond Series 2	\$	41,000,000
Funds Transferred to Series 1	\$	(13,115,495)
IUSD Funds	\$	-
FUNDS	\$	27,884,505
CURRENT BUDGET	\$	25,600,730
SURPLUS	\$	2,283,775

Current Initial Budget (07/22/2019)		
Bond Series 2	\$	41,000,000
Funds Transferred to Series 1	\$	(13,115,495)
IUSD Funds	\$	-
FUNDS	\$	27,884,505
CURRENT BUDGET	\$	29,203,295
DEFICIT	\$	(1,318,790)
SURPLUS (Series 1)	\$	4,093,822
SURPLUS	\$	2,775,032





Budget Bond Series Overview



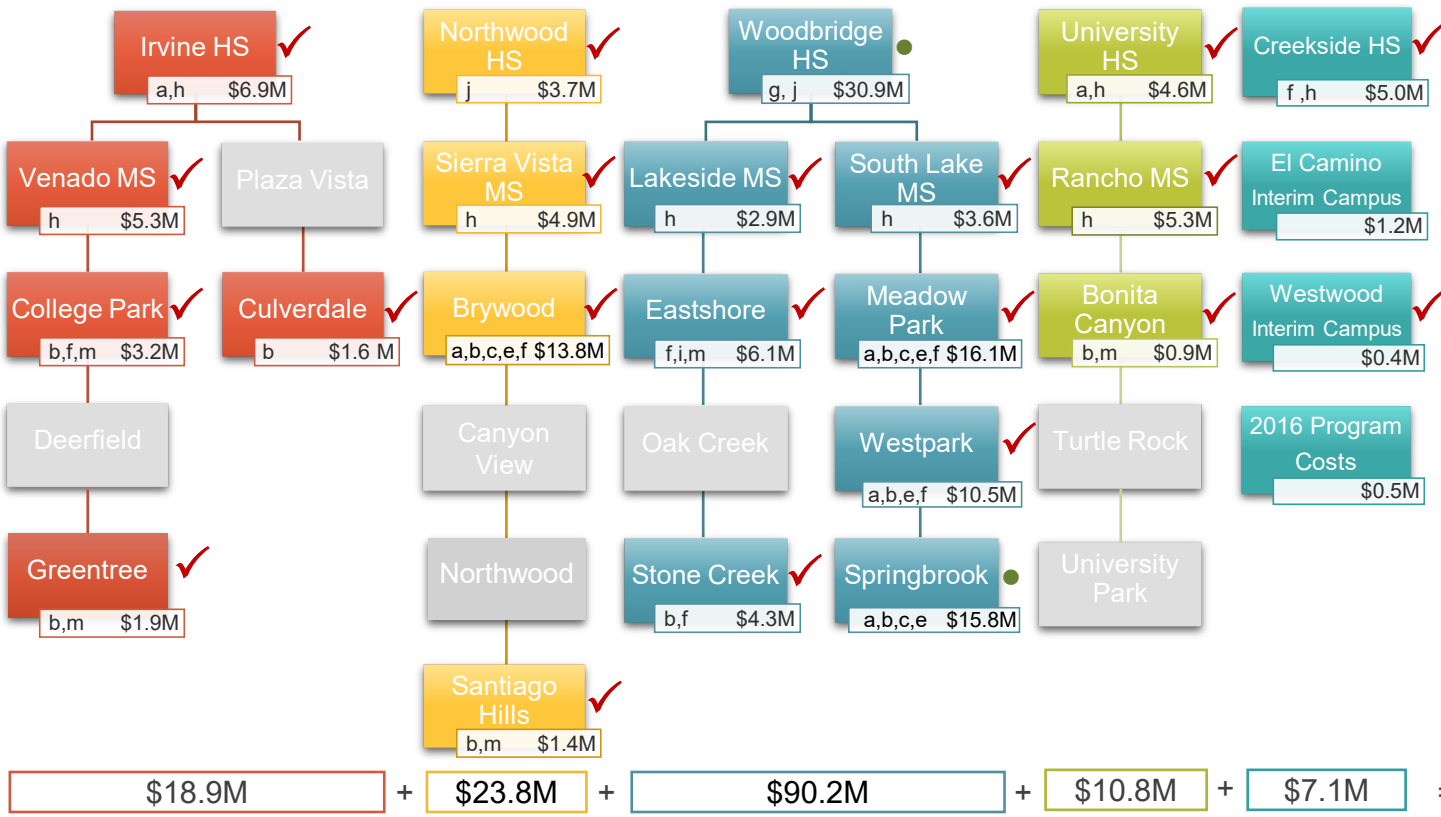


PROJECT TYPES

- a. Modernize facilities over 25 yrs of age
- b. Enclose open classrooms
- c. Construct Music Classrooms
- d. Construct Multipurpose Room
- e. Construct/Upgrade Food Service
- f. Construct Career Tech and Innovation/Design Labs
- g. Construct Visual and Performing Arts, Media Arts Elective Labs and New/Upgrade Theaters
- h. Construct/upgrade science labs and Elective Spaces
- i. Construct/Upgrade Kinder Classroom
- j. Construct all weather track and field
- k. Construct Classrooms to replace portables
- l. Construct Practice Gym
- m. Construct/Upgrade Site Specific Support Facilities

- Under construction
- In design
- ◆ Waiting for Bond sale

Series 1 Funds	\$154.9M
Series 1 Costs	\$150.8M
Surplus	\$4.1M



NOTE: Schools organized by region, not by feeder schools

Measure E Series 1 Projects and Costs

Bond Sale in 2016A



PROJECT TYPES

- Modernize facilities over 25 years of age
 - Enclose open classrooms
 - Construct Music Classrooms
 - Construct Multipurpose Room
 - Construct/Upgrade Food Service
 - Construct Career Tech and Innovation/Design Labs
 - Construct Visual and Performing Arts, Media Arts Elective Labs and New/Upgrade Theaters
 - Construct/upgrade science labs and Elective Spaces
 - Construct/Upgrade Kinder Classrooms
 - Construct all weather track and field
 - Construct Classrooms to replace portables
 - Construct Practice Gym
 - Construct/Upgrade Site Specific Support Facilities
- Under construction
 - In design
 - ◆ Waiting for Bond sale

Series 2 Funds \$27.9M

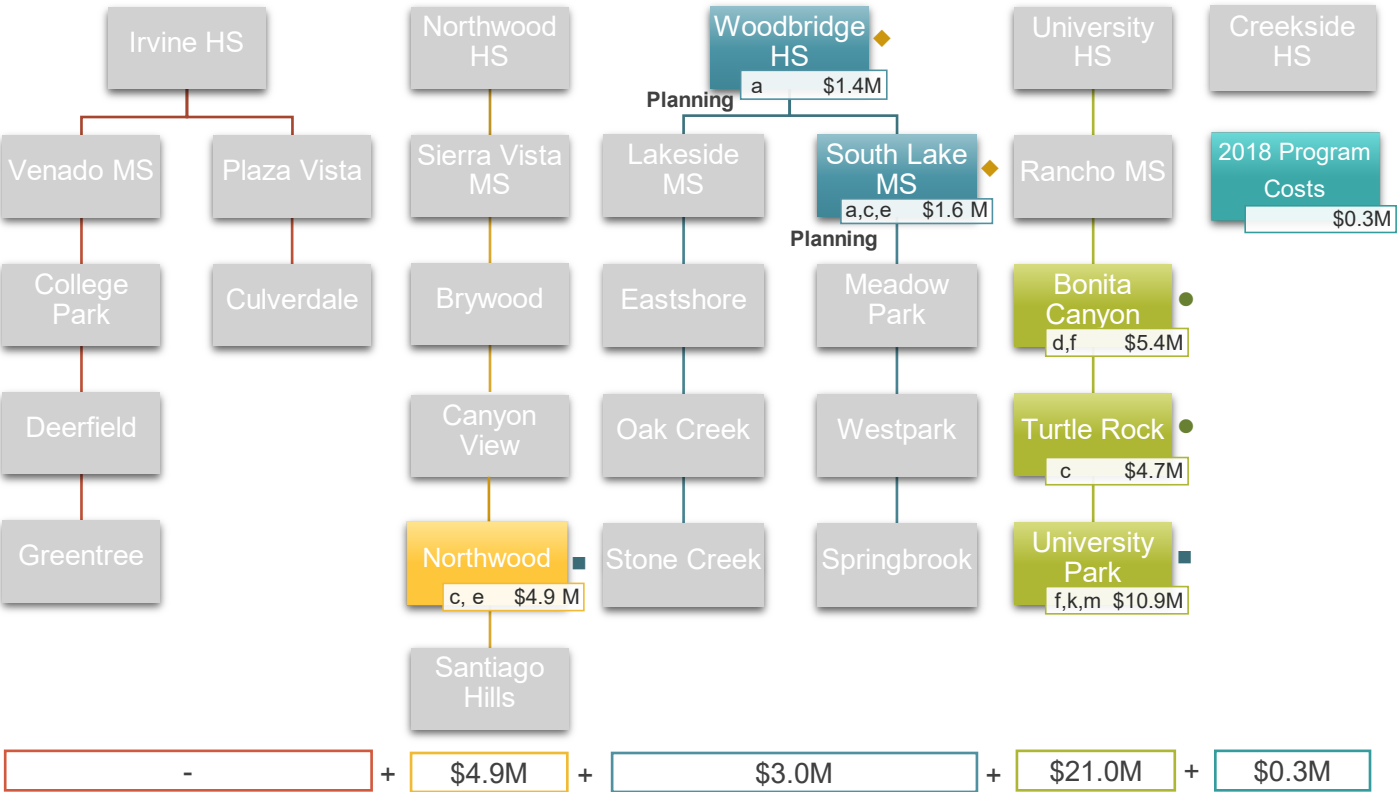
Series 2 Costs \$29.2M

Deficit (\$1.3M)

Surplus (Series 1) \$4.1M

Surplus \$2.8M

22 | June 2, 2020



NOTE: Schools organized by region, not by feeder schools

Measure E Series 2 Projects and Costs

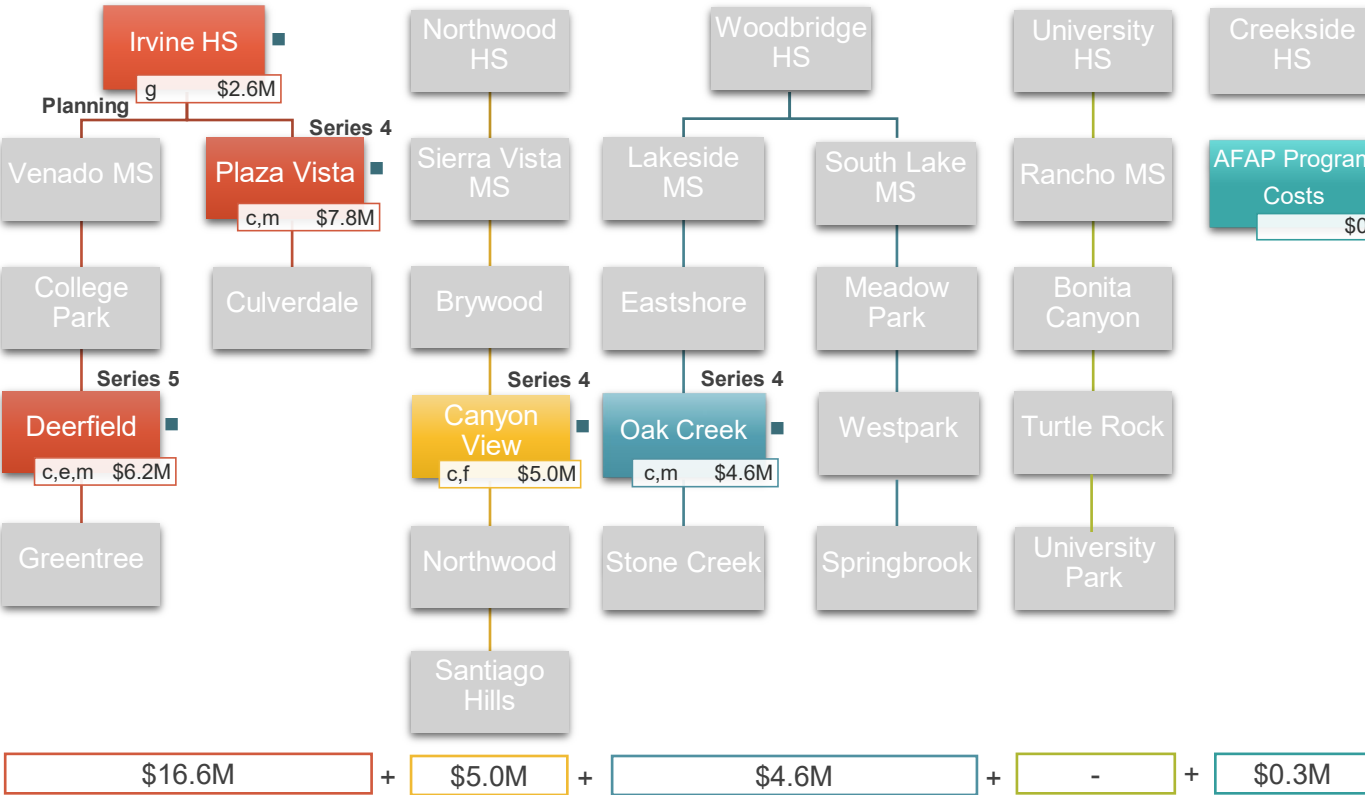
Bond Sale in 2018B



PROJECT TYPES

- a. Modernize facilities over 25 years of age
 - b. Enclose open classrooms
 - c. Construct Music Classrooms
 - d. Construct Multipurpose Room
 - e. Construct/Upgrade Food Service
 - f. Construct Career Tech and Innovation/Design Labs
 - g. Construct Visual and Performing Arts, Media Arts Elective Labs and New/Upgrade Theaters
 - h. Construct/upgrade science labs and Elective Spaces
 - i. Construct/Upgrade Kinder Classrooms
 - j. Construct all weather track and field
 - k. Construct Classrooms to replace portables
 - l. Construct Practice Gym
 - m. Construct/Upgrade Site Specific Support Facilities
- Under construction
 - In design
 - ◆ Waiting for Bond sale

AFAP Program
Costs
\$0.3M



AFAP Funds	\$30.0M
AFAP Costs	\$26.5M
Surplus	\$3.5M

NOTE: Schools organized by region, not by feeder schools

Measure E AFAP Projects and Costs

AFAP Funds 2019



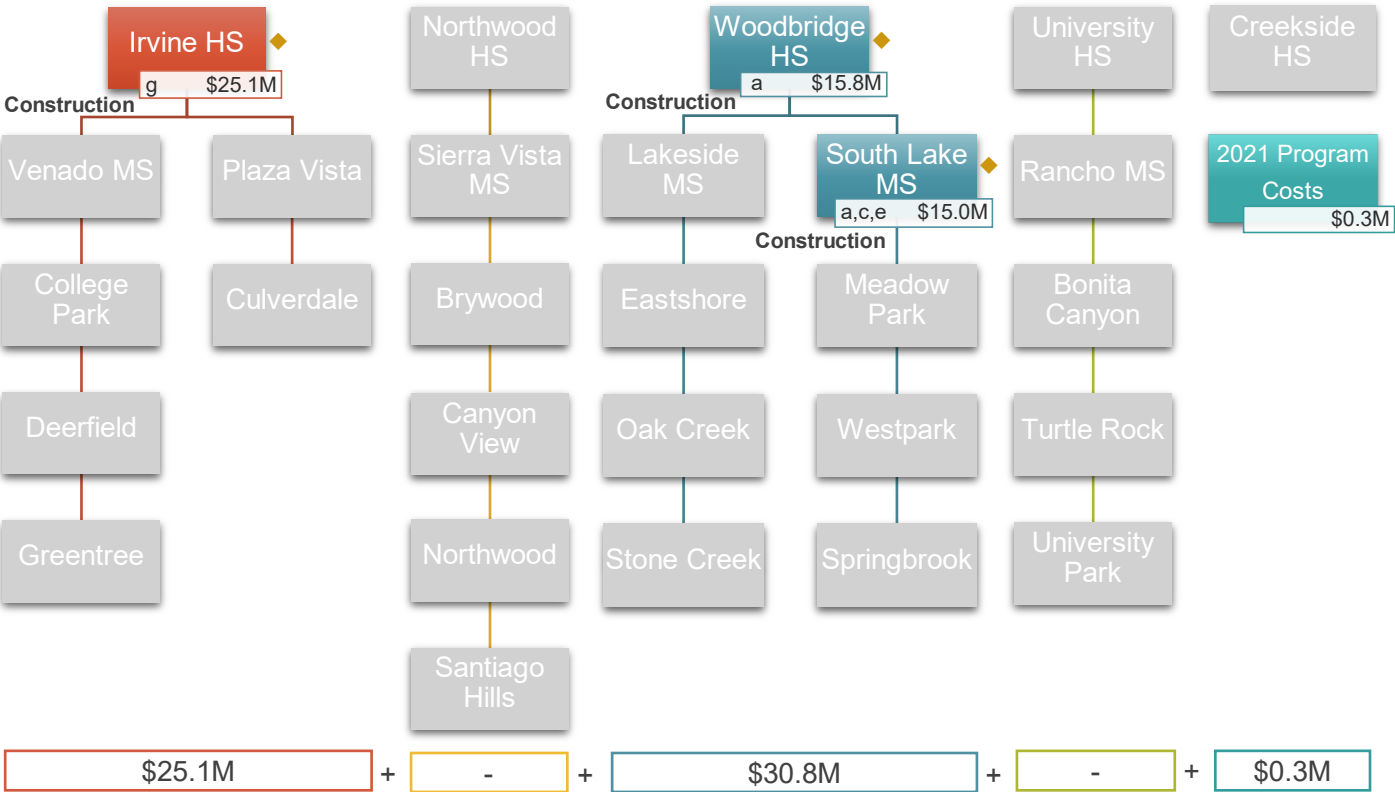


PROJECT TYPES

- Modernize facilities over 25 years of age
- Enclose open classrooms
- Construct Music Classrooms
- Construct Multipurpose Room
- Construct/Upgrade Food Service
- Construct Career Tech and Innovation/Design Labs
- Construct Visual and Performing Arts, Media Arts Elective Labs and New/Upgrade Theaters
- Construct/upgrade science labs and Elective Spaces
- Construct/Upgrade Kinder Classrooms
- Construct all weather track and field
- Construct Classrooms to replace portables
- Construct Practice Gym
- Construct/Upgrade Site Specific Support Facilities

- Under construction
- In design
- ◆ Waiting for Bond sale

Series 3 Funds	\$54.3M
Series 3 Costs	\$56.2M
Deficit	<\$1.9M>



NOTE: Schools organized by region, not by feeder schools

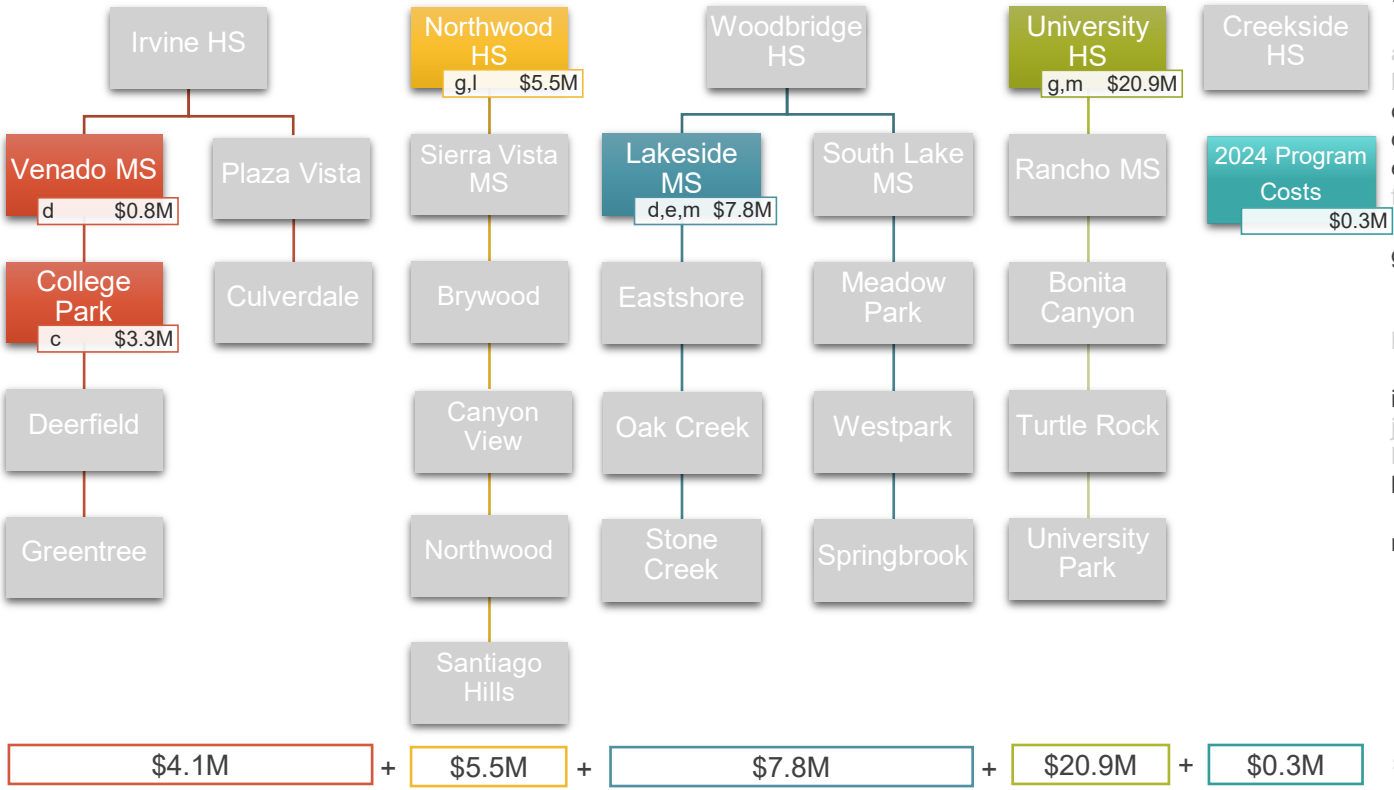
Measure E Series 3 Projects and Costs

Pending Bond Sale Projected 2021



PROJECT TYPES

- a. Modernize facilities over 25 years of age
- b. Enclose open classrooms
- c. Construct Music Classrooms
- d. Upgrade/Construct Multipurpose Room
- e. Construct/Upgrade Food Service
- f. Construct Career Tech and Innovation/Design Labs
- g. Construct Visual and Performing Arts, Media Arts Elective Labs and New/Upgrade Theaters
- h. Construct/upgrade science labs and Elective Spaces
- i. Construct/Upgrade Kinder Classrooms
- j. Construct all weather track and field
- k. Construct Classrooms to replace portables
- l. Construct Practice Gym at NHS \$3.9 M deferred at Board Meeting June 5, 2018
- m. Construct/Upgrade Site Specific Support Facilities



NOTE: Schools organized by region, not by feeder schools

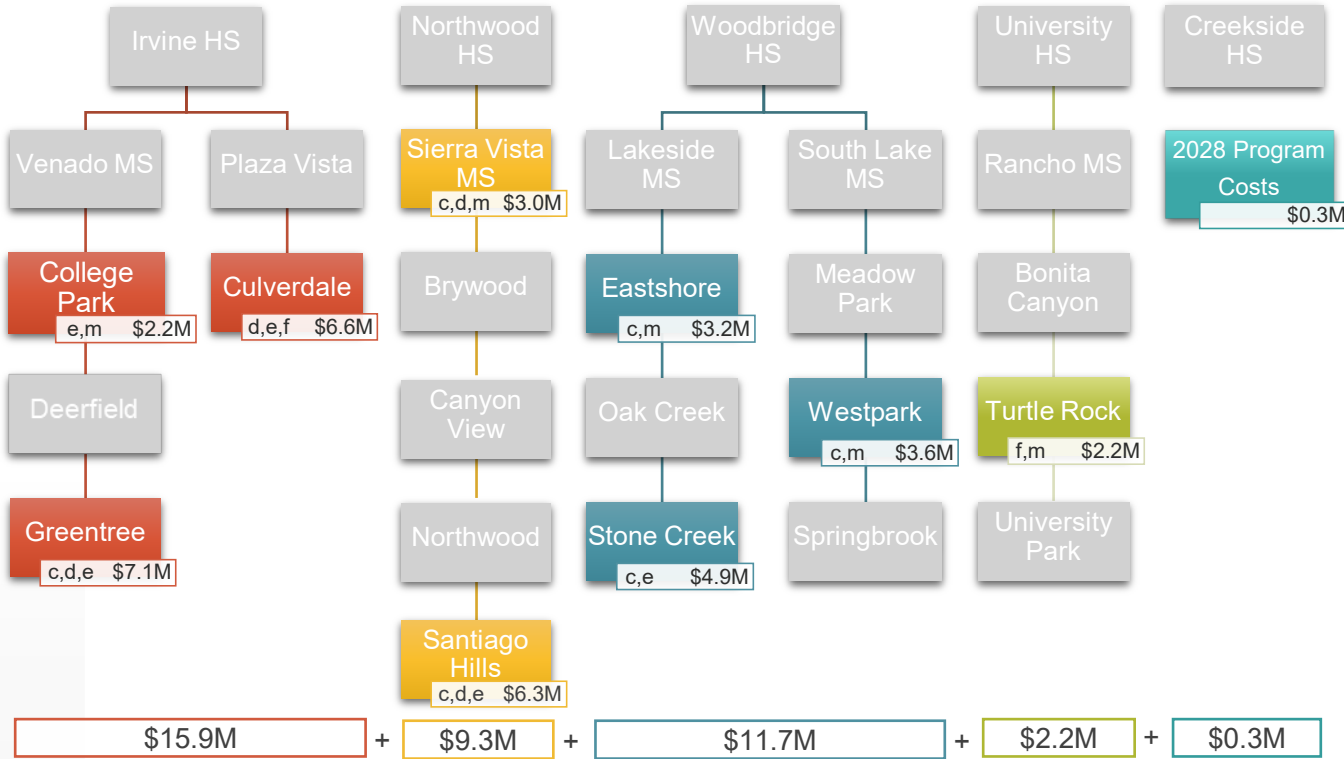
Measure E Series 4 Projects and Costs

Pending Bond Sale Projected 2024



PROJECT TYPES

- a. Modernize facilities over 25 yrs of age
- b. Enclose open classrooms
- c. Construct Music Classrooms
- d. Construct/Upgrade Multipurpose Room
- e. Construct/Upgrade Food Service
- f. Construct Career Tech and Innovation/Design Labs
- g. Construct Visual and Performing Arts, Media Arts Elective Labs and New/Upgrade Theaters
- h. Construct/upgrade science labs and Elective Spaces
- i. Construct/Upgrade Kinder Classrooms
- j. Construct all weather track and field
- k. Construct Classrooms to replace portables
- l. Construct Practice Gym
- m. Construct/Upgrade Site Specific Support Facilities CHS Project \$1.2 M deferred at Board Meeting June 5, 2018



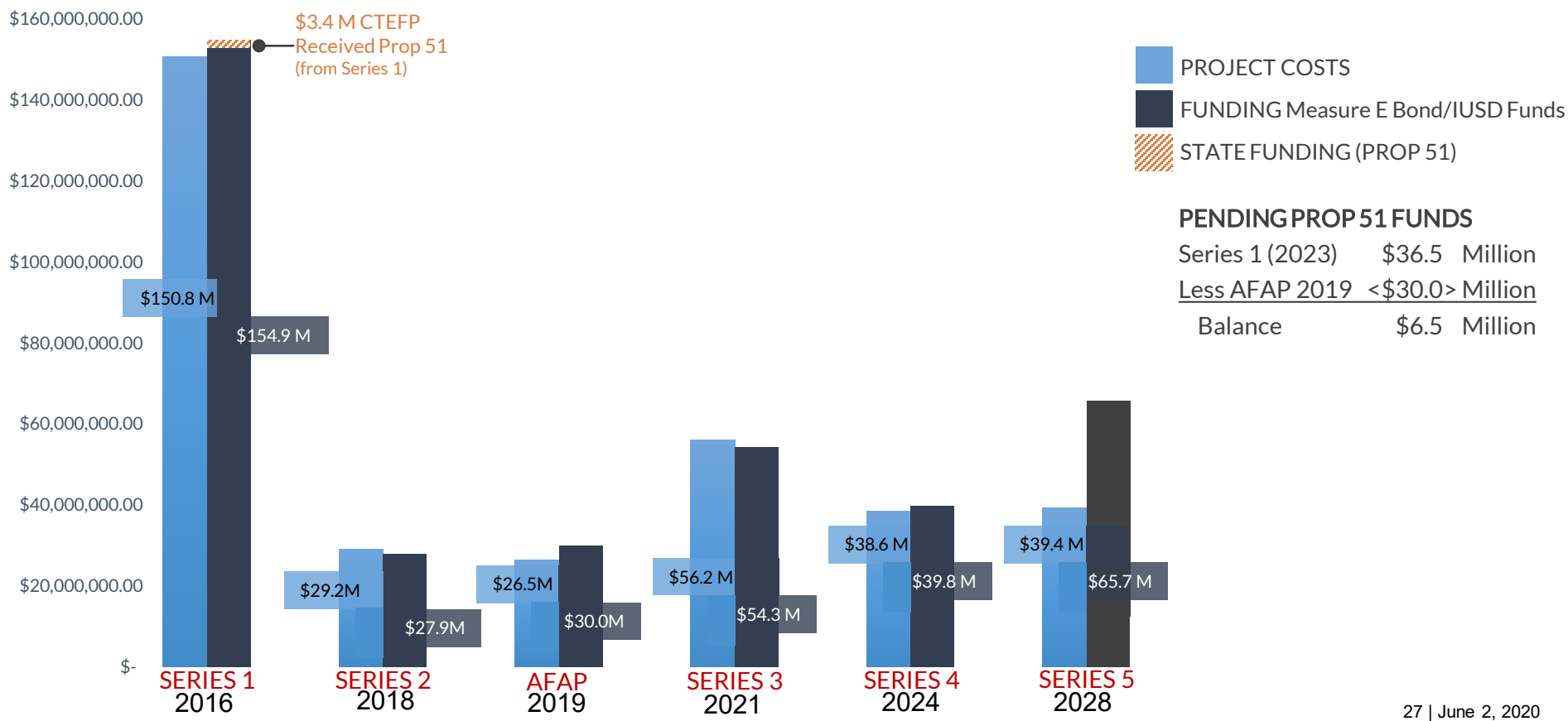
Series 5 Funds	\$65.7M
Series 5 Costs	\$39.4M
Surplus	\$26.3M

NOTE: Schools organized by region, not by feeder schools

Measure E Series 5 Projects and Costs

Pending Bond Sale Projected 2028

MEASURE E BY SERIES: PROJECT COST VS FUNDING



State Funding



OFFICE OF PUBLIC SCHOOL CONSTRUCTION: LISTS DEFINED

Step 1a: “Acknowledged” List

When no State Funding is available

- Project applications submitted beyond the Proposition 51 Bond Authority
- Subject to IUSD Board Resolution acknowledging exhaustion of funds
- *Waiting for future State Bond*

Series 1 has 3 projects on this list totaling \$837,116

Step 1b: “Workload” List

When State Funding is available

- Project applications submitted to OPSC, waiting for staff review
- *Anticipate funding under Proposition 51*

Series 1 has 21 projects on this list totaling \$35,214,276



OFFICE OF PUBLIC SCHOOL CONSTRUCTION: LISTS DEFINED

Step 2: “Unfunded (Lack of AB 55)” List

- Project applications have been fully reviewed by OPSC staff
- Subject to bi-annual Priority Funding Letter
- *Project waiting for State Bond sale (Fall/Spring)*

Series 1 has 2 projects on this list totaling \$1,312,593

Step 3: “Apportioned” List

- Project applications that were previously on the Unfunded (Lack of AB 55) list
- Submitted bi-annual Priority Funding Letter
- Shovel-Ready within 90 days of moving to Apportioned list
- *Ready for Fund Release request*

Series 1 has 0 projects on this list



STATE FUNDING – MEASURE E PROJECTS



STEP 1A: ACKNOWLEDGED LIST

Site Name	Estimated Funding
Bonita Canyon ES (Series I: MOD)	\$152,715
Greentree ES (Series I: MOD)	\$249,055
Lakeside MS (Series I: MOD)	\$435,346
Total State Funding Applications	\$837,116

STEP 2: OPSC UNFUNDED LIST

Site Name	Estimated Funding
College Park ES (Series 1: MOD)	\$527,914
Culverdale ES (Series 1: MOD)	\$784,679
Total State Funding Applications	\$1,312,593

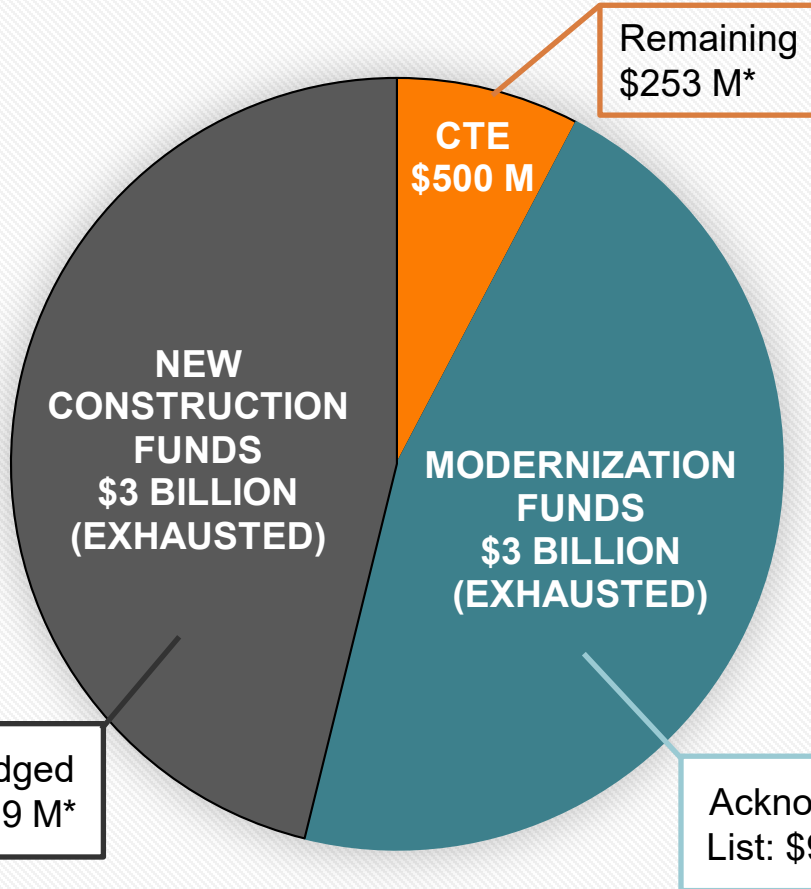
STATE FUNDED PROJECTS (Prop. 51)

Site Name	Amount Received
Creekside High School (Series 1 CTEFP: Construction Technology)	\$439,400
Woodbridge High School (Series 1 CTEFP: Performing Arts Center)	\$3,000,000
Total State Funded Applications	\$3,439,400

STEP 1B: OPSC WORKLOAD LIST

Site Name	Estimated Funding
Santiago Hills ES (Series 1: MOD)	\$335,448
Stone Creek ES (Series 1: MOD)	\$1,411,210
Stone Creek ES (Series 1: NC)	\$681,602
Irvine HS (Series 1: MOD)	\$3,874,257
University HS (Series 1: MOD)	\$654,092
Creekside HS (Series 1: NC)	\$1,579,717
Sierra Vista MS (Series 1: NC)	\$1,572,100
South Lake MS (Series 1: NC)	\$870,227
Eastshore ES (Series 1: MOD)	\$694,305
Springbrook ES (Series 1: MOD)	\$3,097,577
Westpark ES (Series 1: MOD)	\$3,415,758
Eastshore ES (Series 1: NC)	\$835,854
Venado MS (Series 1: NC)	\$2,231,969
Rancho San Joaquin MS (Series 1: MOD)	\$543,617
Rancho San Joaquin MS (Series 1: NC)	\$1,108,967
Brywood ES (Series 1: MOD)	\$2,870,668
Woodbridge HS (Series 1: NC)	\$3,041,419
Springbrook ES (Series 1: NC)	\$1,626,156
Meadow Park ES (Series 1: NC)	\$1,149,109
Brywood ES (Series 1: NC)	\$1,094,082
Meadow Park ES (Series 1: MOD)	\$2,526,142
Total State Funding Applications	\$35,214,276

STATE SCHOOL FACILITY PROGRAM – PROPOSITION 51



APPROVED BY CALIFORNIA VOTERS
NOVEMBER 8, 2016

OTHER PROP 51	• \$500.0M CHARTER SCHOOLS
	• \$2.0B COMMUNITY COLLEGE

Future State Bond:

- Proposition 13 did not pass 3/3/2020
- to be determined



Master Schedule



MASTER SCHEDULE (Series 1, Series 2, AFAP)



2020

2021

2022

Woodbridge HS – Performing Arts Center

Construction

Summer 2020

SERIES 1

Springbrook ES – Modernization / Music Classroom

Construction

Summer 2020

Woodbridge HS – Field Improvements

Spring 2020

Bonita Canyon ES and Turtle Rock ES

Bid

Construction

Summer 2021

SERIES 2

Northwood ES and University Park ES

Design / DSA

Bid

Construction

Summer 2022

South Lake MS and Woodbridge HS

DSA approved, waiting on Series 3 Bond Sale

Canyon View ES, Deerfield ES, Oak Creek ES and Plaza Vista School

Design / DSA

Bid

Construction

Summer 2022

AFAP

Irvine HS

Design / DSA

Once approved by DSA, wait on Series 3 Bond Sale

COMPLETED PROJECTS (Series 1)

2017 (4 sites)	2018 (6 sites)	2019 (9 sites)	2020 (2 sites)
<ul style="list-style-type: none">• Bonita Canyon ES• Culverdale ES• Greentree ES• Santiago Hills ES	<ul style="list-style-type: none">• College Park ES• Stone Creek ES• Lakeside MS• Irvine HS• Northwood HS• University HS	<ul style="list-style-type: none">• Brywood ES• Eastshore ES• Meadow Park ES• Westpark ES• Rancho San Joaquin MS• Sierra Vista MS• South Lake MS• Venado MS• Creekside HS	<ul style="list-style-type: none">• Woodbridge HS (Field Improvements)• <i>Springbrook ES*</i>• <i>Woodbridge HS (PAC)*</i>

* Under construction, complete summer 2020



Projects In Design

**Augmented Funds to Accelerate Projects (AFAP)
and
Series 2 Projects**

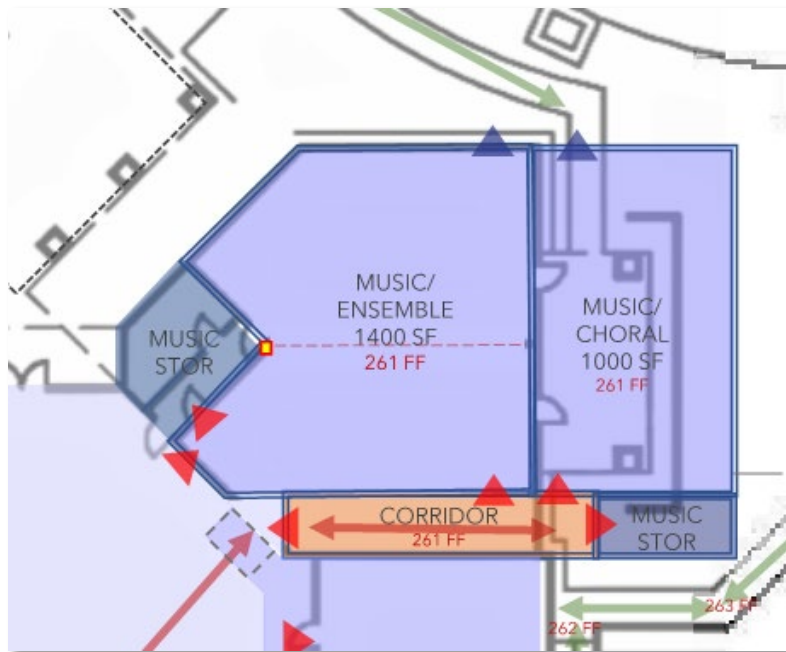


Projects In Design

Augmented Funds to Accelerate Projects (AFAP)

- Canyon View ES
- Oak Creek ES
- Deerfield ES
- Plaza Vista School
- Irvine HS





Music Classroom Expansion – Plan View



Interior Renovations – Plan View

CANYON VIEW ES (Music Classroom Expansion)



Music Classroom Expansion – Front View

Music Classroom Expansion – Back View



CANYON VIEW ES (Innovation Lab and Design Lab)

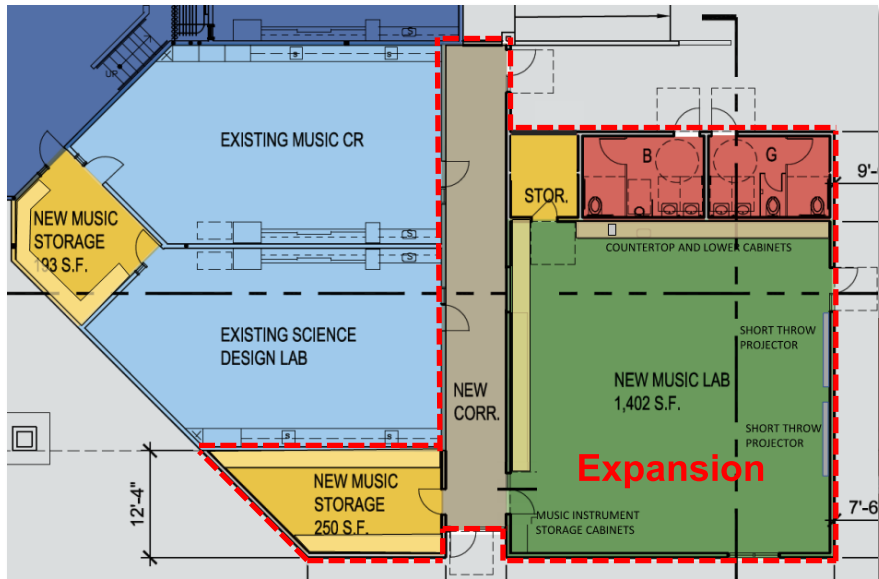


Innovation Lab (left) and Design Lab (right)

Design and Innovation Labs (left) / Conf. Room (right)



OAK CREEK ES (New Music Classroom)



Music Classroom Expansion – Plan View

New Music Lab - Interior



OAK CREEK ES (New Music Classroom)



Music Classroom Expansion – Front View

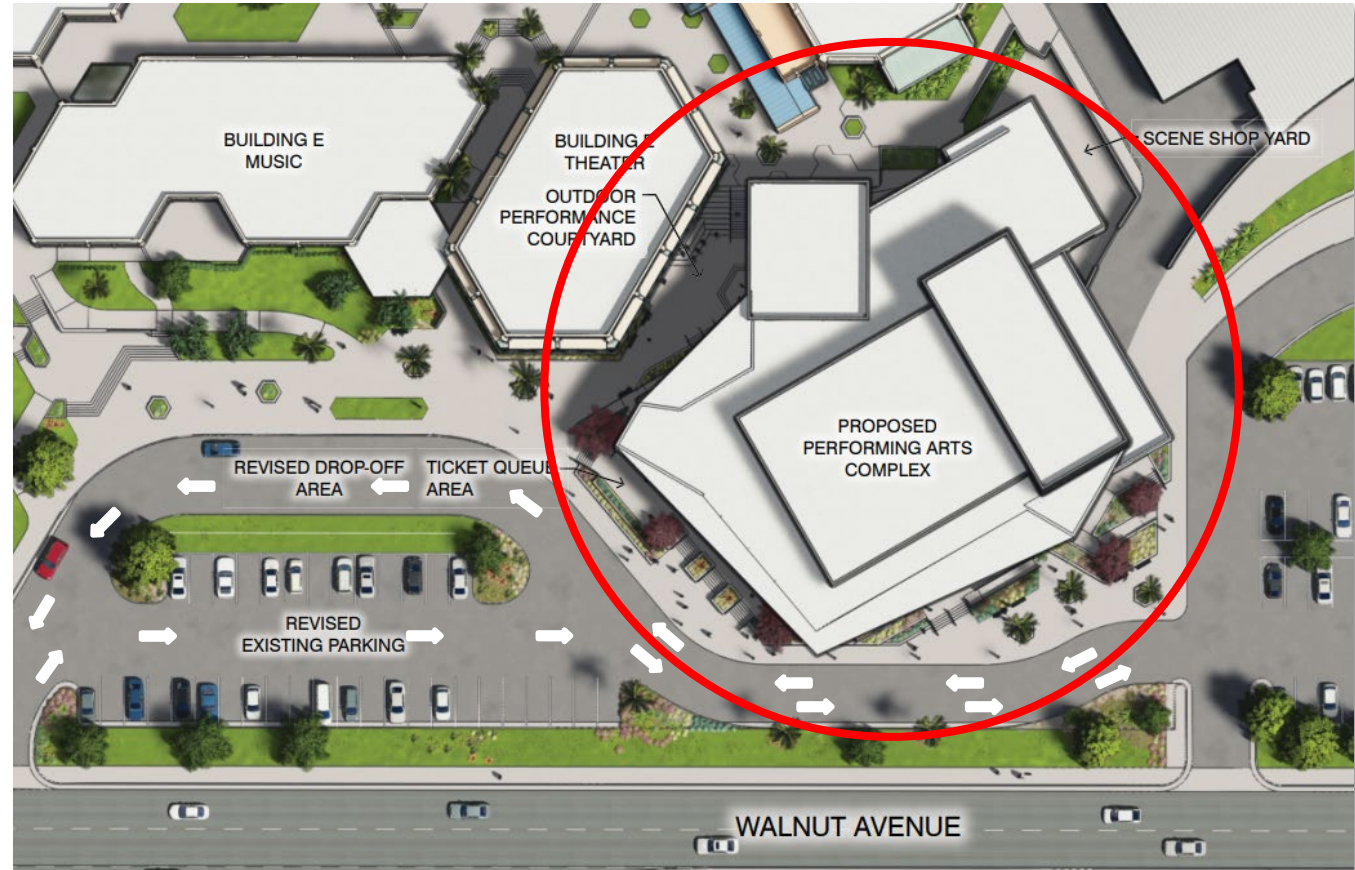
Music Classroom Expansion - Back View





Feasibility Study

- Proposed placement of new Performing Arts Complex
- Realignment of drive aisles
- Modification of parking



IRVINE HS (New Performing Arts Complex)



Feasibility Study

- Proposed placement of new Performing Arts Complex
- Realignment of drive aisles
- Building massing



DEERFIELD ES (New Music Classroom)



Site Overview

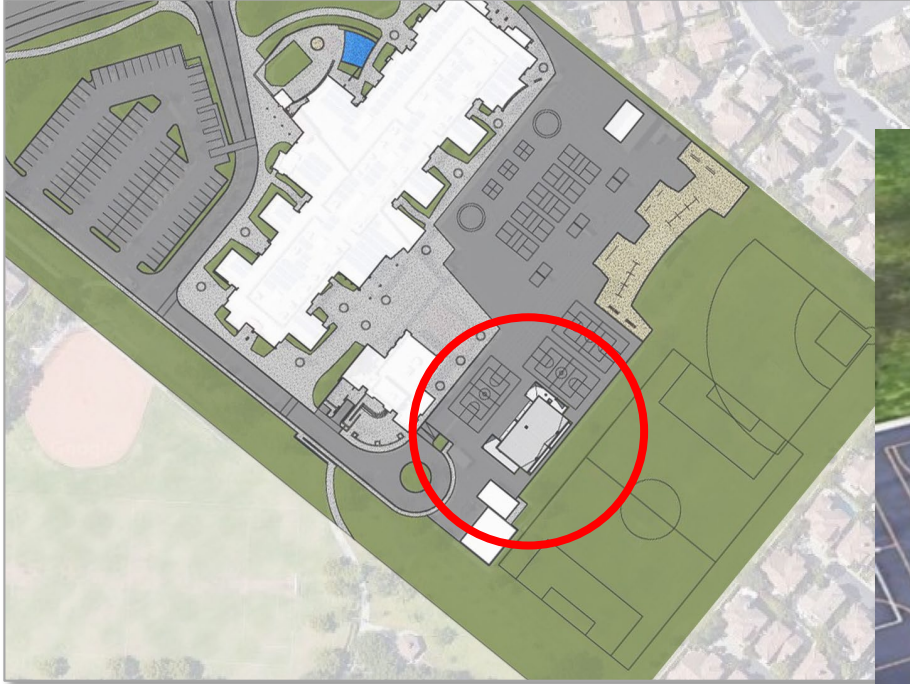


New Music Classroom Building

PLAZA VISTA SCHOOL (New Music Classroom)



Site Overview



New Music Classroom Building

Projects In Design

Series 2 Projects

- University Park ES
- Northwood ES

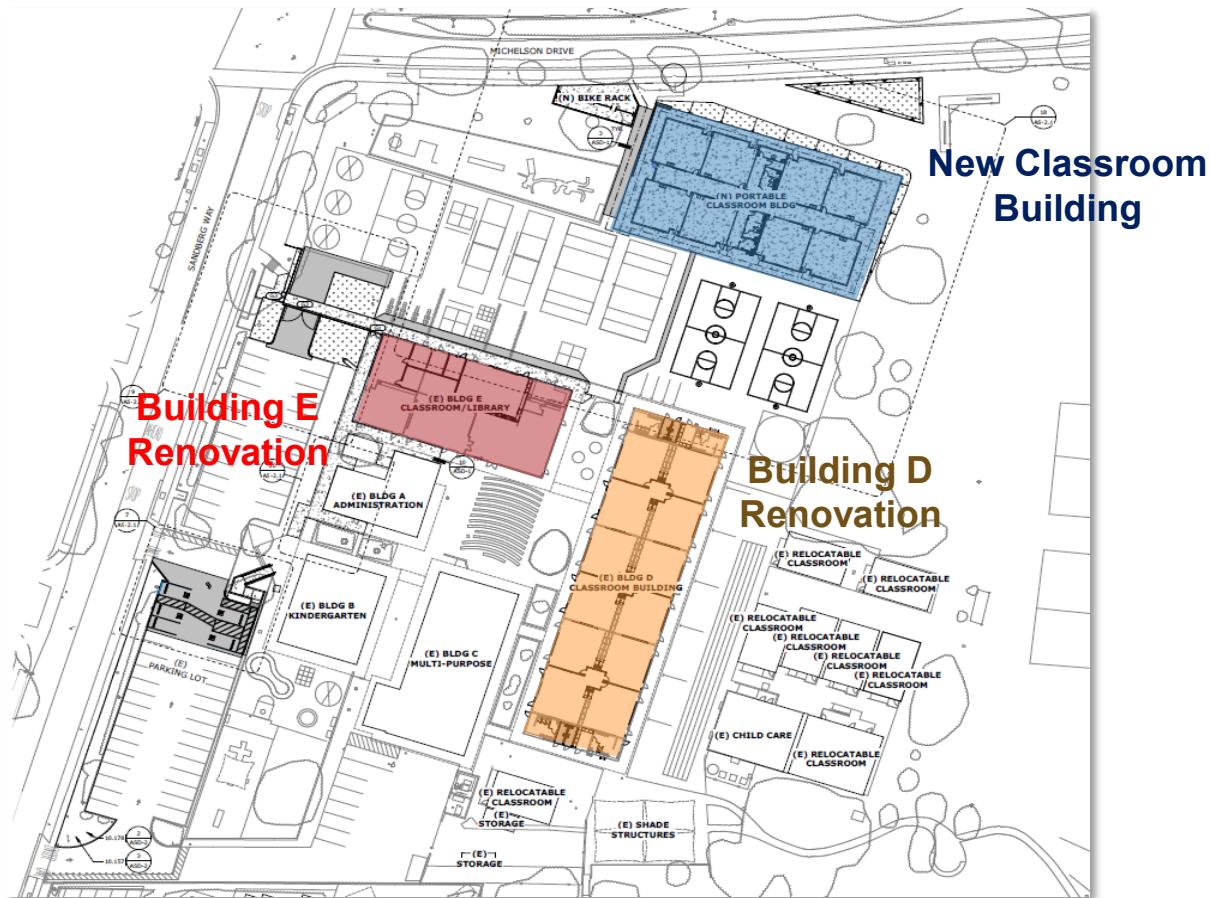
DSA APPROVED

- South Lake MS
- Woodbridge HS





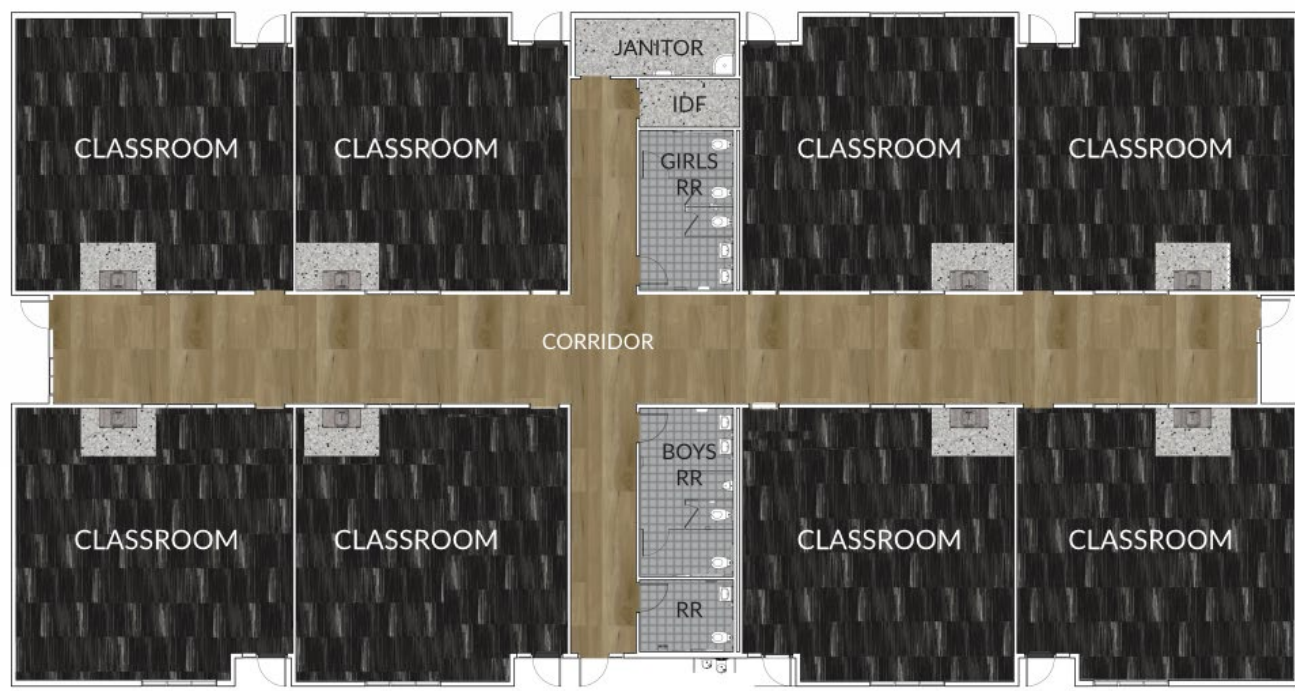
Site Overview



UNIVERSITY PARK ES (New Classroom Building)



Plan view



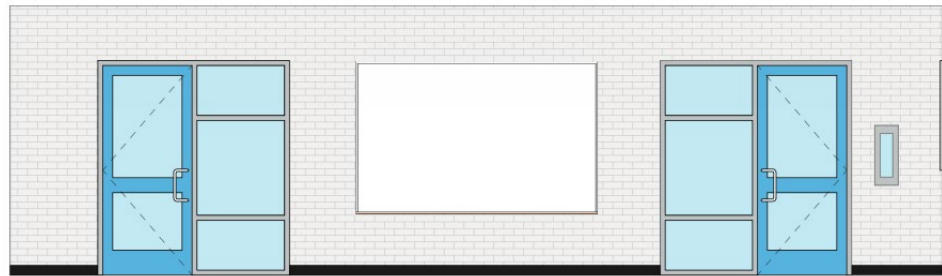
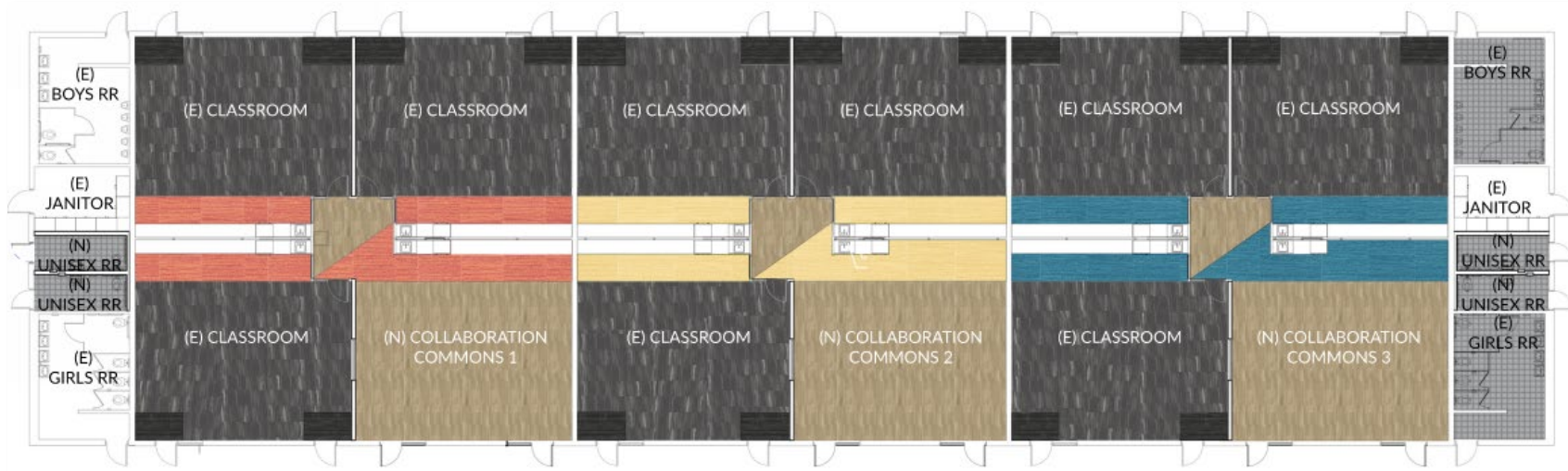
Elevation view



UNIVERSITY PARK ES (Building D Collaboration Spaces)



Plan View

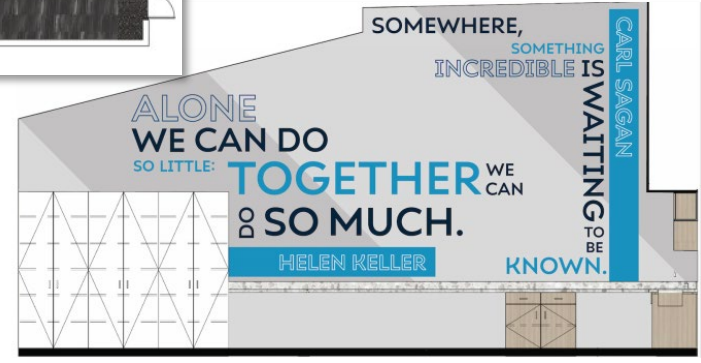
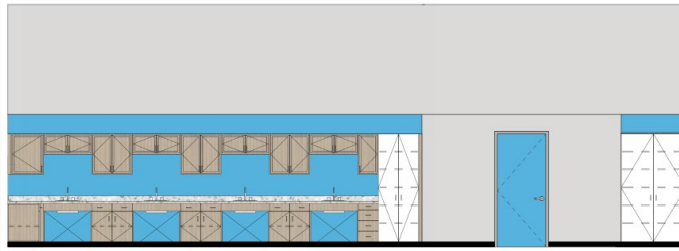
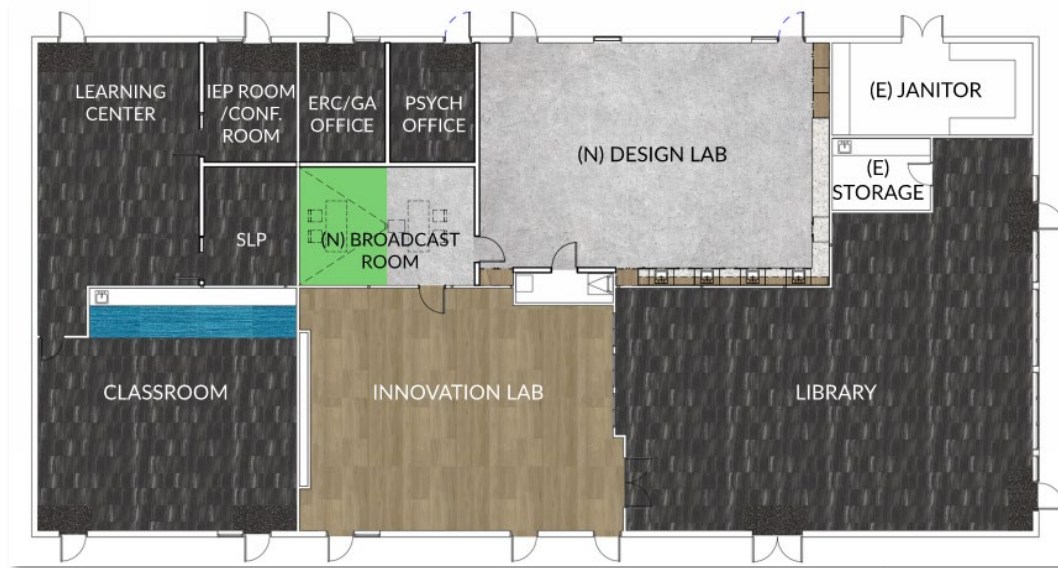


Interior Elevations

UNIVERSITY PARK ES (Building E Design Lab)



Plan View

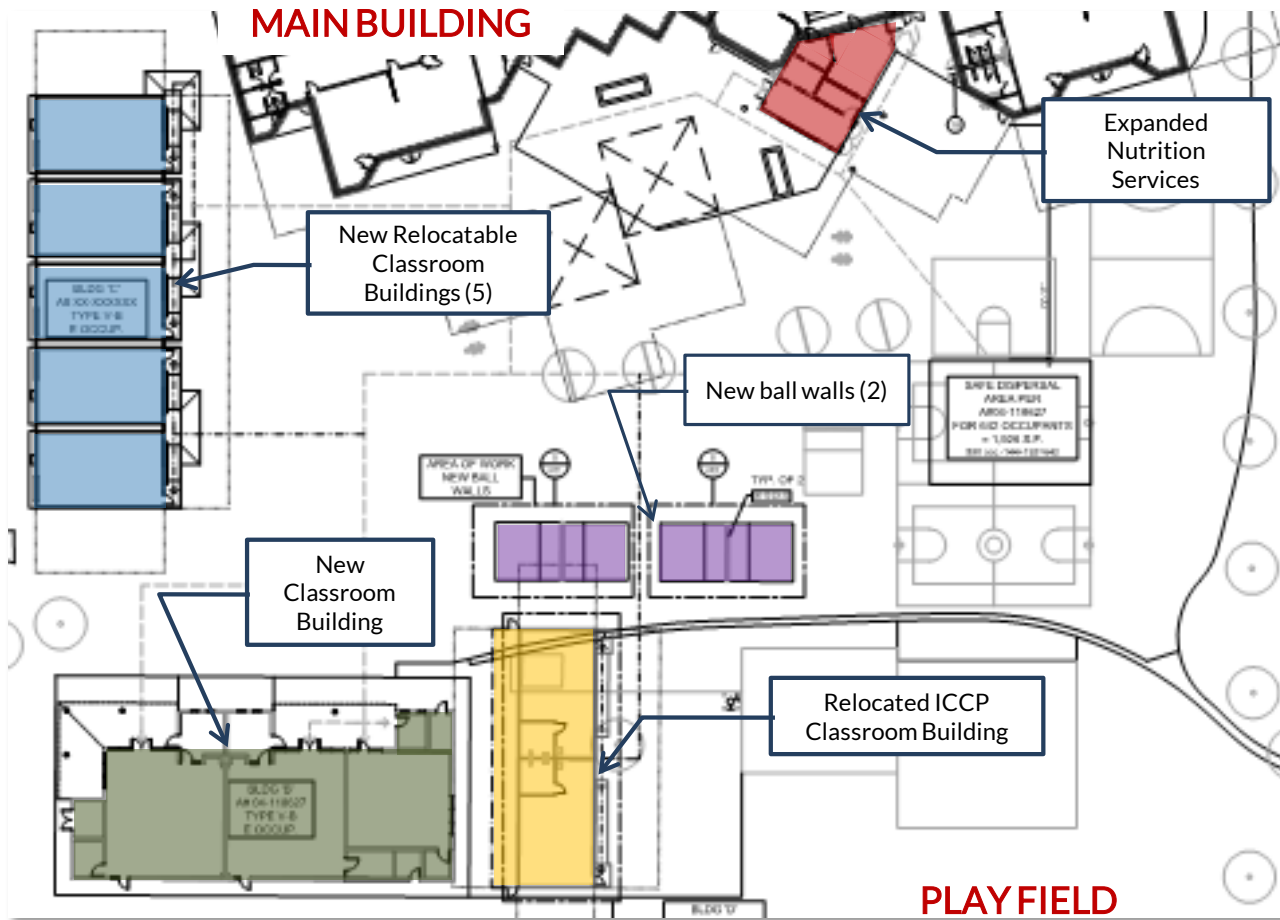


Interior Elevations

NORTHWOOD ES (Campus Improvements)



[Site Overview](#)



NORTHWOOD ES (New Classroom Building)*



Music Classroom Building - Exterior

Choral Room - Interior



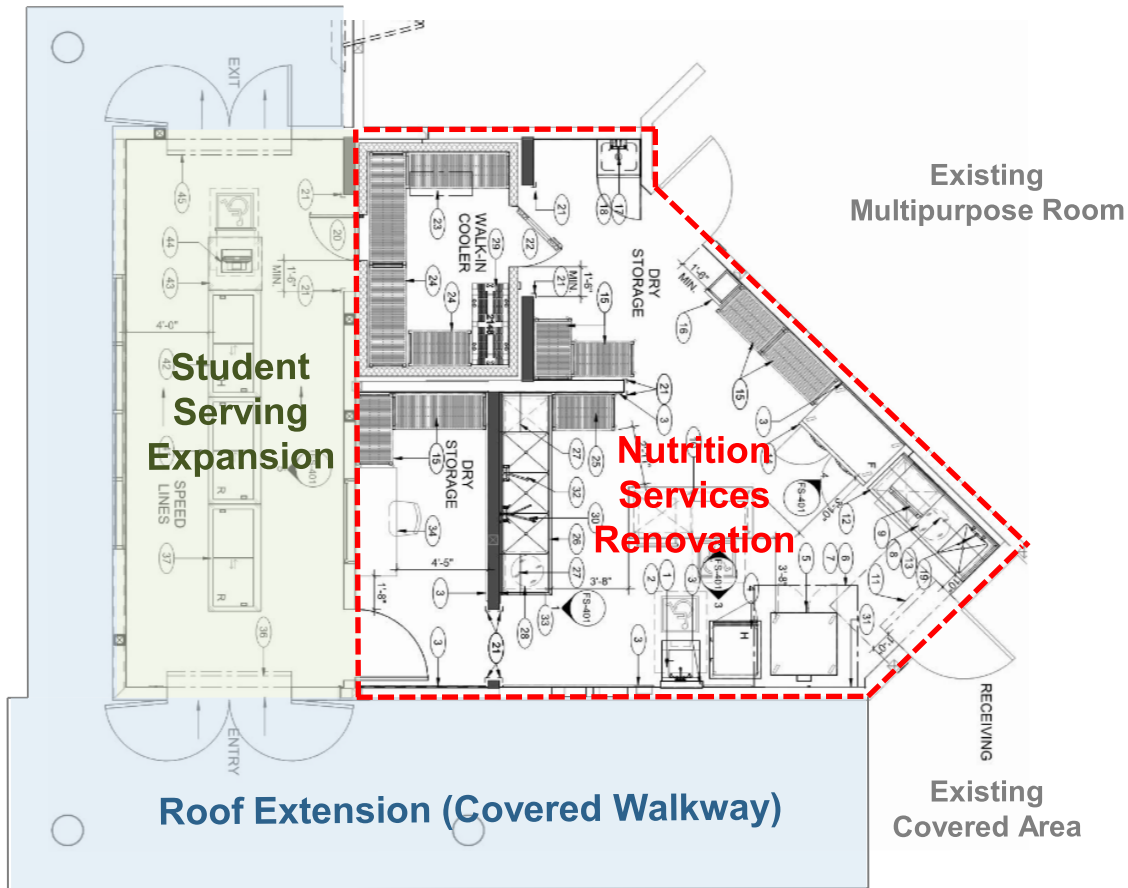
Flexible Choral Environment

- Similar design as Springbrook ES new classroom building

NORTHWOOD ES (Expanded Nutrition Services)



Partial plan view



Projects Under Construction

Series 2 Projects
and
Series 1 Projects



Projects Under Construction

Series 2 Projects

- Bonita Canyon ES
- Turtle Rock ES



BONITA CANYON ES (New Multipurpose Building)



Multipurpose Building - Exterior



Multipurpose Room - Interior

BONITA CANYON ES (New Design Lab)



Design lab

Design lab



TURTLE ROCK ES (New Classroom Building)*

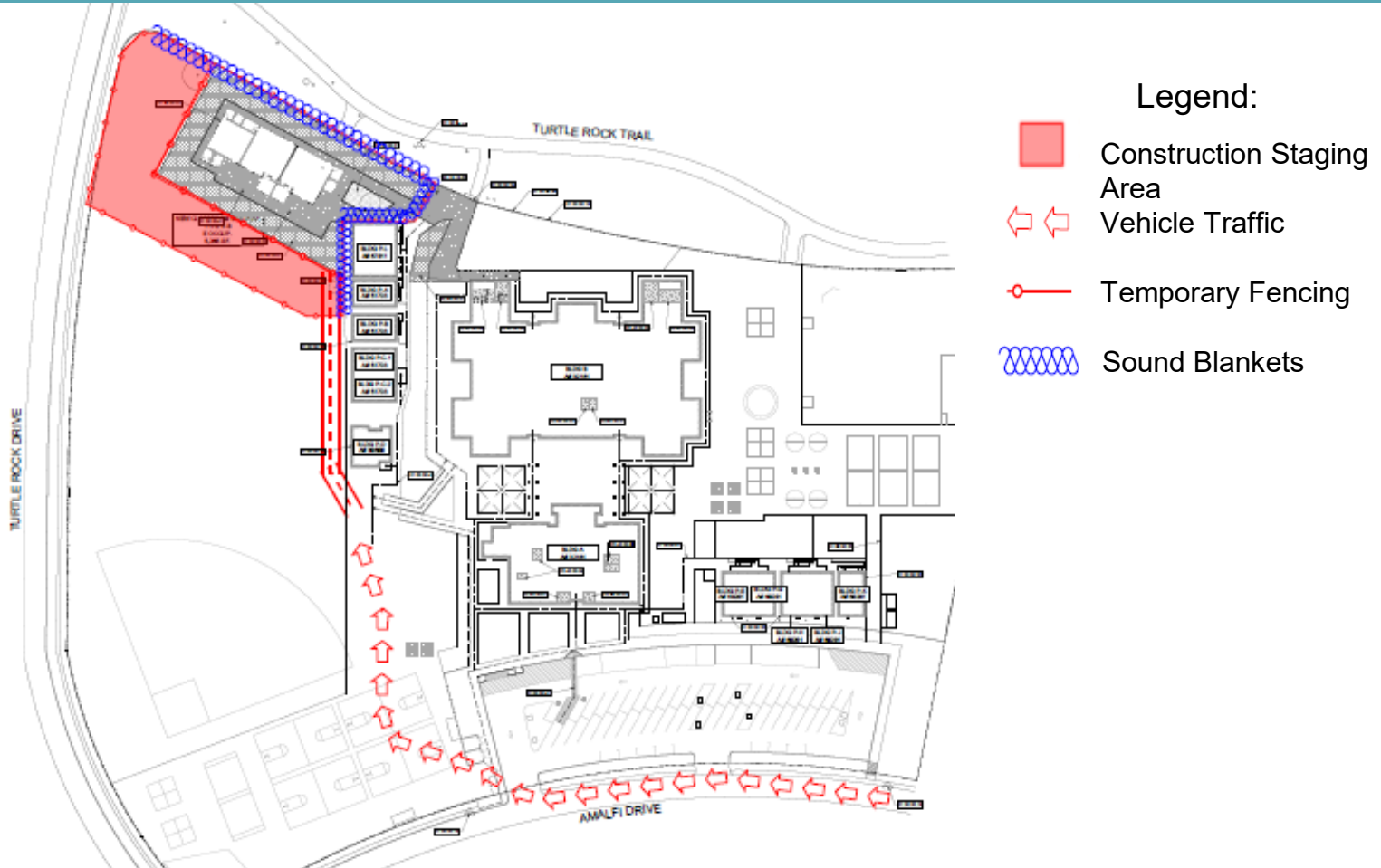


Music Classroom Building - Exterior

Music Classroom - Interior



- Similar design as Springbrook ES new classroom building



Projects Under Construction

Series 1 Projects

- Springbrook ES
- Woodbridge HS



SPRINGBROOK ES (Modernization)



Classroom (typical)



Collaboration Space

SPRINGBROOK ES (Modernization)



Corridor to Innovation (right) and Kindergarten (beyond)



Innovation Lab

SPRINGBROOK ES (New Classroom Building)



Music Classroom Building



Music Classroom Building



SPRINGBROOK ES (New Classroom Building)



Music Classrooms

Music Classroom



WOODBRIIDGE HS (Performing Arts Complex)



Main Entrance, Ticket Booth in Foreground

Main Entrance



WOODBRIIDGE HS (Performing Arts Complex)



First Floor Lobby

Second Floor Seating (stage in foreground)





Mid-Field (towards Legacy Creekside)

Visitor Team Side (towards Alton Parkway)



WOODBIDGE HS (Field Improvements)



Visitor Team Side (towards school)

Home Team Side (towards Alton Parkway)



LEARNING ENVIRONMENT ENHANCEMENT PROJECTS (LEEP) UPDATE





LEARNING ENVIRONMENT ENHANCEMENT PROJECTS UPDATE

Funding

- Approximately \$2.0 million has been set aside from a facilities budget to provide the improvements over the 2020 summer

Improvement Types

- Create Outdoor Learning Areas
- Create Outdoor Collaboration Area w/Shade Structure
- Enhance Outdoor Courtyard Learning Area
- Create Indoor Collaboration Area within Commons
- Improve Multipurpose Rooms
- Enhance Learning Support Spaces
- Incorporate Flexible Furniture
- Create Learning Gardens

Schedule

- Improvements are scheduled to start in early June and complete by late August
- Improvements and budgets are being finalized

**CURRENT
PROJECTS IN
PLANNING**

LEARNING ENVIRONMENT ENHANCEMENT PROJECTS

Outdoor Collaboration Area w/ Shade Structure

Current



Cypress Village Elementary School

- Add shade for outside collaboration area
- Add furniture

Enhancement



LEARNING ENVIRONMENT ENHANCEMENT PROJECTS

Outdoor Learning Areas

Current



Turtle Rock Elementary School

- Introduce synthetic turf
- Add outdoor seating/umbrellas
- Install writable surfaces on exterior walls

Enhancement



IRVINE UNIFIED
SCHOOL DISTRICT

LEARNING ENVIRONMENT ENHANCEMENT PROJECTS

Outdoor Courtyard Learning Area

Current



Alderwood Elementary School

- Introduce synthetic turf

Enhancement



LEARNING ENVIRONMENT ENHANCEMENT PROJECTS

Indoor Collaboration Area within Commons

Current



Vista Verde School

- Remove casework
- Repair finishes
- Add flexible furniture

Enhancement





QUESTIONS?