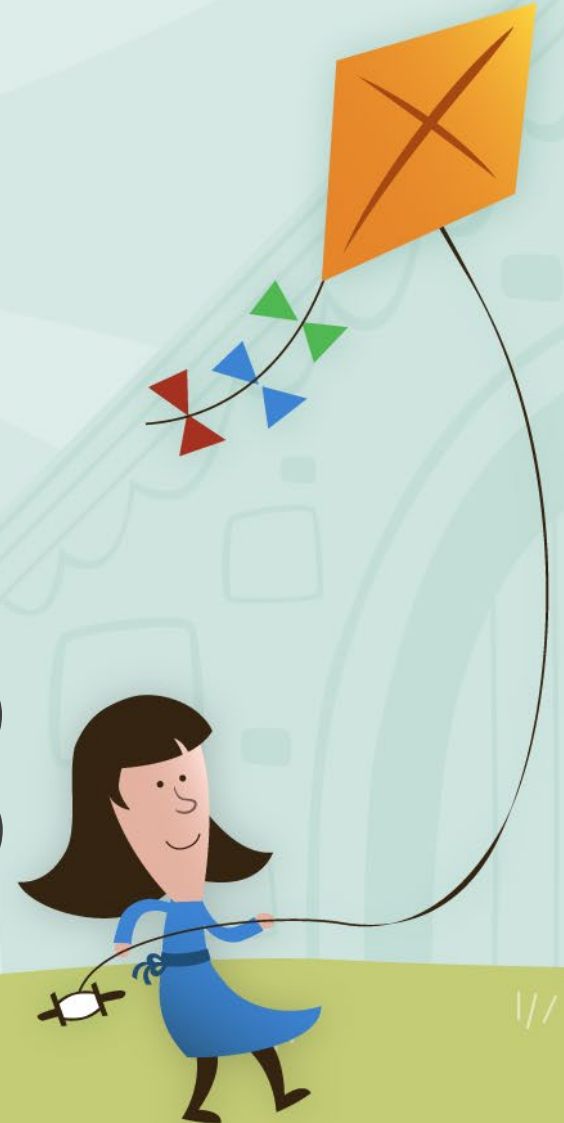


Irvine USD Special Education Local Planning Agency (SELPA) 2021-2022

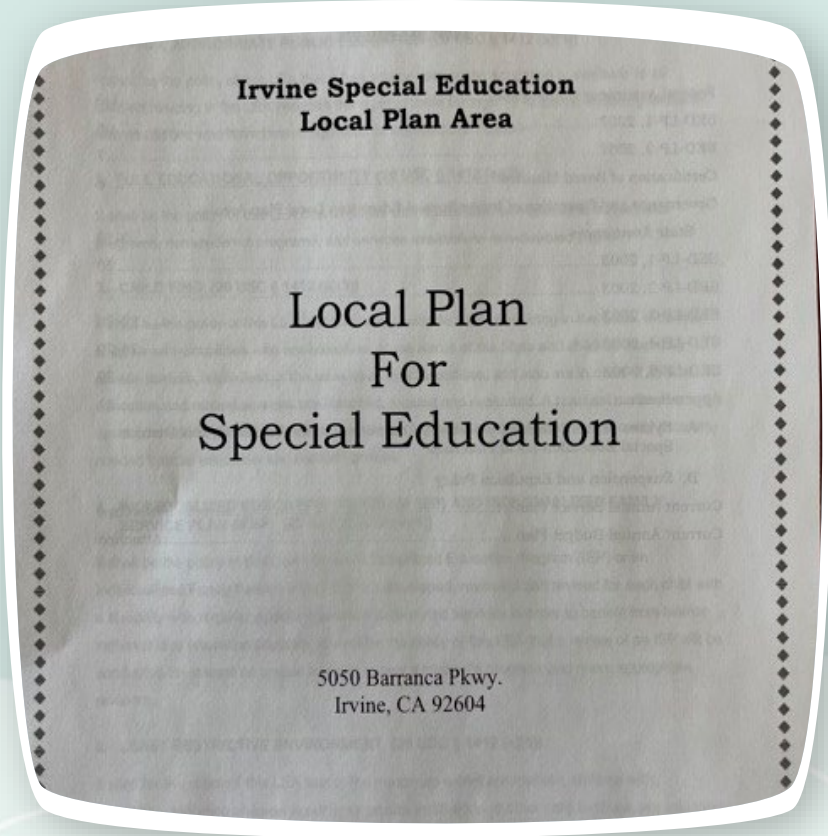
*Local Plan Revision
Annual Budget Plan (ABP)
Annual Service Plan (ASP)*



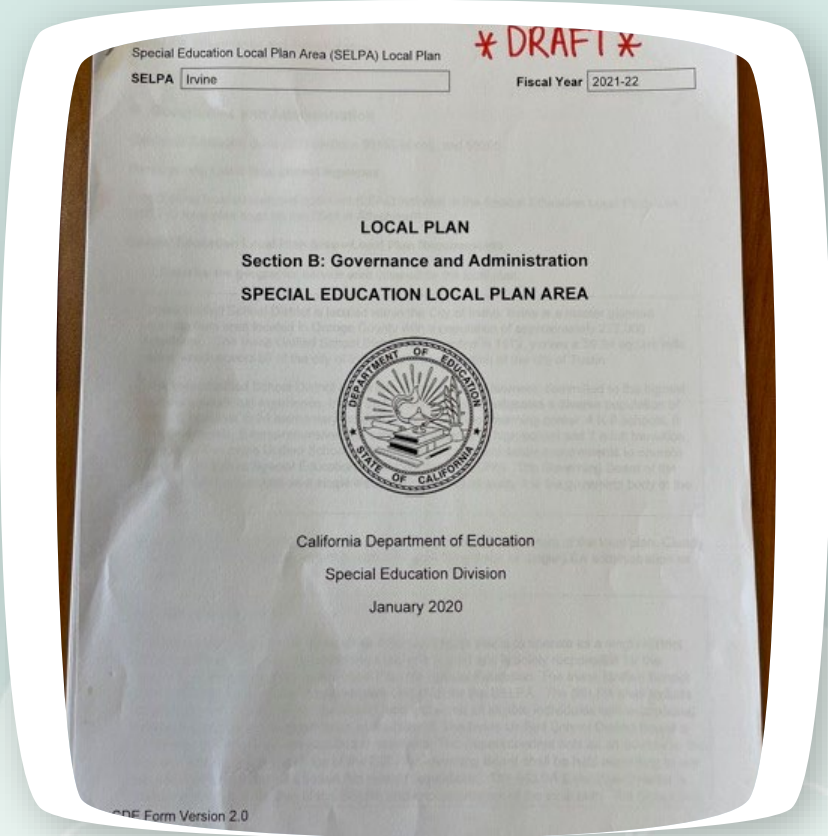
2021-22 Local Plan Revision

- 2018 Assembly Bill 1808 required all SELPA's in the State to submit revised Local Plans.
- The SELPA's must utilize the template provided by the CDE.
- ALL SELPA's are now required to submit a Local Plan every three years.





Irvine 2010 Local Plan



Irvine 2021-2022 Local Plan



2010 Local Plan

- A. Federal Law (IDEA) Assurance Statements
- B. Literacy (California Reading Initiative)
- C. Behavior Plan/Hughes Bill
- D. Annual Service Plan
- E. Annual Budget Plan
- F. Joint Powers/Contracts n/a
- G. Coordination w/other Agencies
- H. Policymaking
- I. Hospital, LCI, Agencies, Juvenile Courts
- J. Non-Public School Monitoring
- K. Specialized Equipment & Services
- L. Community Advisory Committee
- M. Consideration of General Education Resources
- N. Identification, Referral, Assessment, Planning, Implementation
- O. Early Childhood Education Programs



2021-2022 Local Plan

- Section A: Contacts & Certifications
 - Certification 1: Section B: Governance & Administration
 - Certification 2: Local Plan Section D & E
 - Certification 3: County Office of Education Superintendent
 - Certification 4: Community Advisory Committee
 - Certification 5: Participating Local Educational Agency
- Section B: Governance & Administration
- Section D: Annual Budget Plan
- Section E: Annual Service Plan
- Attachments: Participating LEA's revenue and expenditures.



Section B: Governance & Administration EC 56195 & 56205

Geographic Area Covered by Local Plan
Regional Governance Administrative Structure
Responsibilities of Governance & SELPA Staff
Policy Making Process
Role of County Office of Education
Charter School Participation
CAC Representation & Participation
Identify the Administrative Unit
Contractual Agreements with other Service Providers
Roles of the Responsible Local Agency
Specialized Equipment



Section B: Policies Procedures & Programs EC 56122 & 56205 and Title 34 CFR 300.201

- Free Appropriate Public Education
- Full Educational Opportunity
 - Child Find
- Individualized Education Program & Individualized family Service Plan
- Least Restrictive Environment
- Procedural Safeguards
- Evaluation
- Confidentiality
- Part C to B Transitions
- Private Schools
- Local Compliance Assurances
- Interagency
- Governance
- Personal Qualifications
- Performance Goals & Indicators
- Participation in Assessments
- Supplementation of State, Local, and Federal Funds
- Maintenance of Effort
- Public Participation
- Suspension & Expulsion
- Access to Instructional Materials
- Over-identification and Disproportionality
- Prohibition on Mandatory Medicine
- **Administration of Regionalized Operations and Services**



Local Plan Requirements: ABP & ASP

- California *Education Code (EC)* Section 56205 requires the submission of **Annual Budget** and **Service Plans** that are adopted at public hearings held by the special education local plan area (SELPA). These plans must identify expected expenditures and include a description of services, the physical location of the services, and must demonstrate that all individuals with exceptional needs have access to services and instruction appropriate to meet their needs as specified in their individualized education program.



Annual Service Plan (ASP) Codes

The ASP identifies Special Education services and locations where these services may be provided.

Service Codes & Descriptions:

200 codes: Infant & Toddlers/Part C

300 codes: Specialized Instruction

400 codes: Related Services

500 codes: Psychological Services

600 & 700 codes: Low Incidence Services

800 codes: Transition Services

900 codes: Other



Annual Budget Plan (ABP)

- Table 1: Special Education Revenue by Source
- Table 2: Total Budget by Object Codes
- Table 3: Federal, State, and Local Revenue Summary
- Table 4: Special Education Local Plan Areas Operating Expenditures
- Table 5: Projected Expenditures for Supplemental Aids and Services in the Regular Classroom for Students with Low Incidence & Severe Disabilities



Table 1 & 3: Revenue

State Total:	\$26,137,774	27.73%
Federal Total:	\$ 6,532,762	6.93%
<u>Local Contribution:</u>	<u>\$61,571,790</u>	<u>65.33%</u>
Total:	\$94,242,326	100%

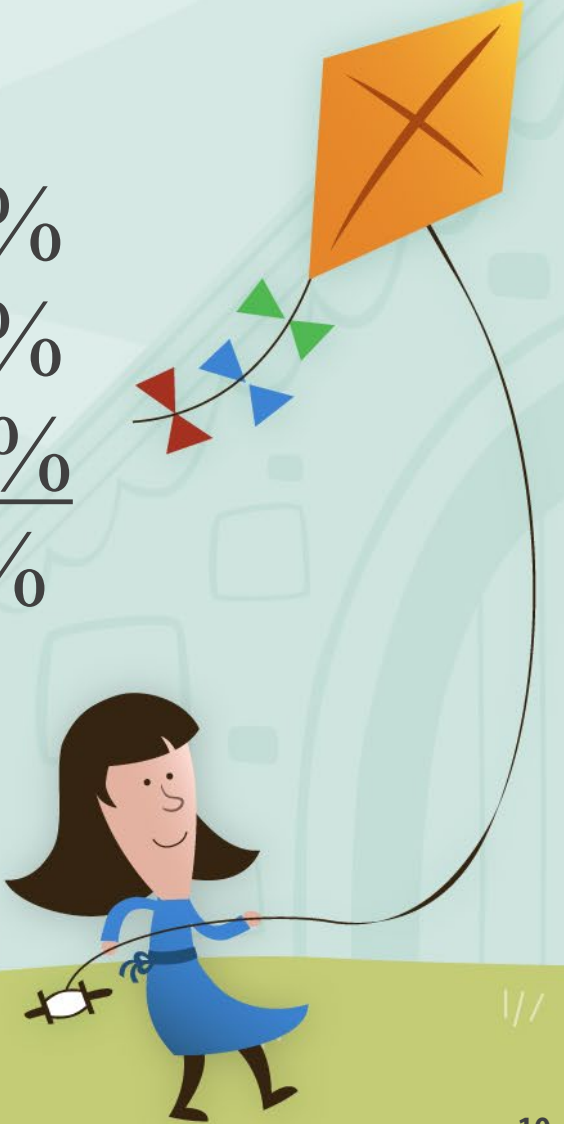


Table 2 & 4: Budget by Object Codes

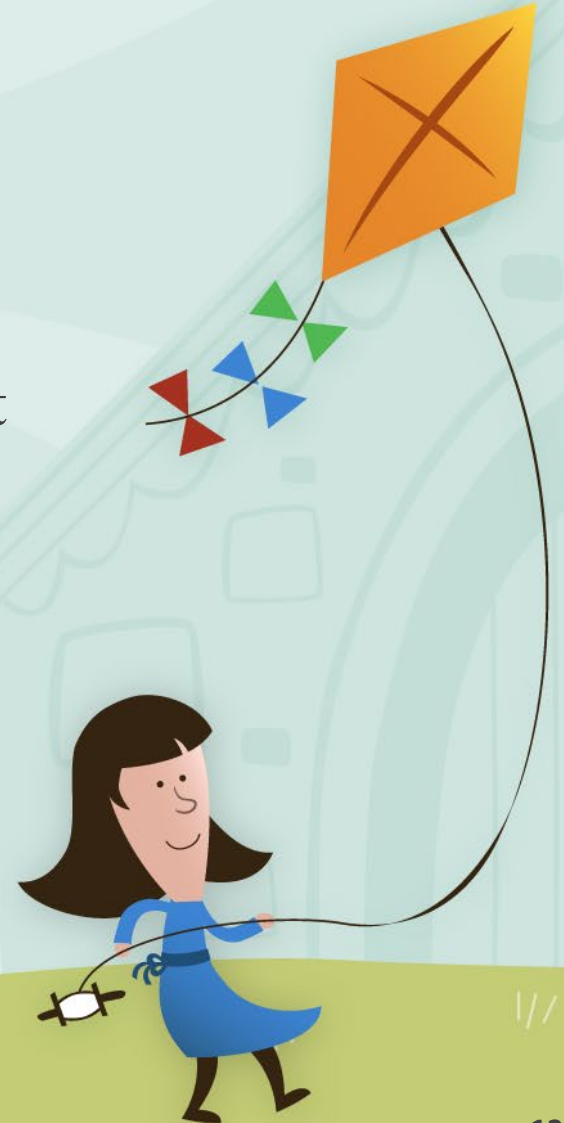
<u>Object Code</u>	<u>Amount</u>	<u>Percentage</u>
1000: Certificated Salaries	\$32,566,487	34.56 %
2000: Classified Salaries	\$22,140,692	23.49 %
3000: Employee Benefits	\$21,700,124	23.03 %
4000: Supplies	\$ 688,075	.73 %
5000: Services & Operations	\$13,199,709	14.01 %
6000: Capital Outlay		0 %
7000: Indirect Costs & OCDE	\$ 3,947,239	4.19 %
Total:		
	\$94,242,326	



Community Advisory Committee (CAC)

CAC 21-22 Goals

- Increased CAC membership and participation
- CAC Parent Handbook to be available on the District's website
- Connecting Parents through collaboration and individual support
- Promote and enhance inclusive practices
- Advocate for inclusive playgrounds



Thank You

