



► TRUSTEE AREA SCENARIOS

IRVINE UNIFIED SCHOOL DISTRICT

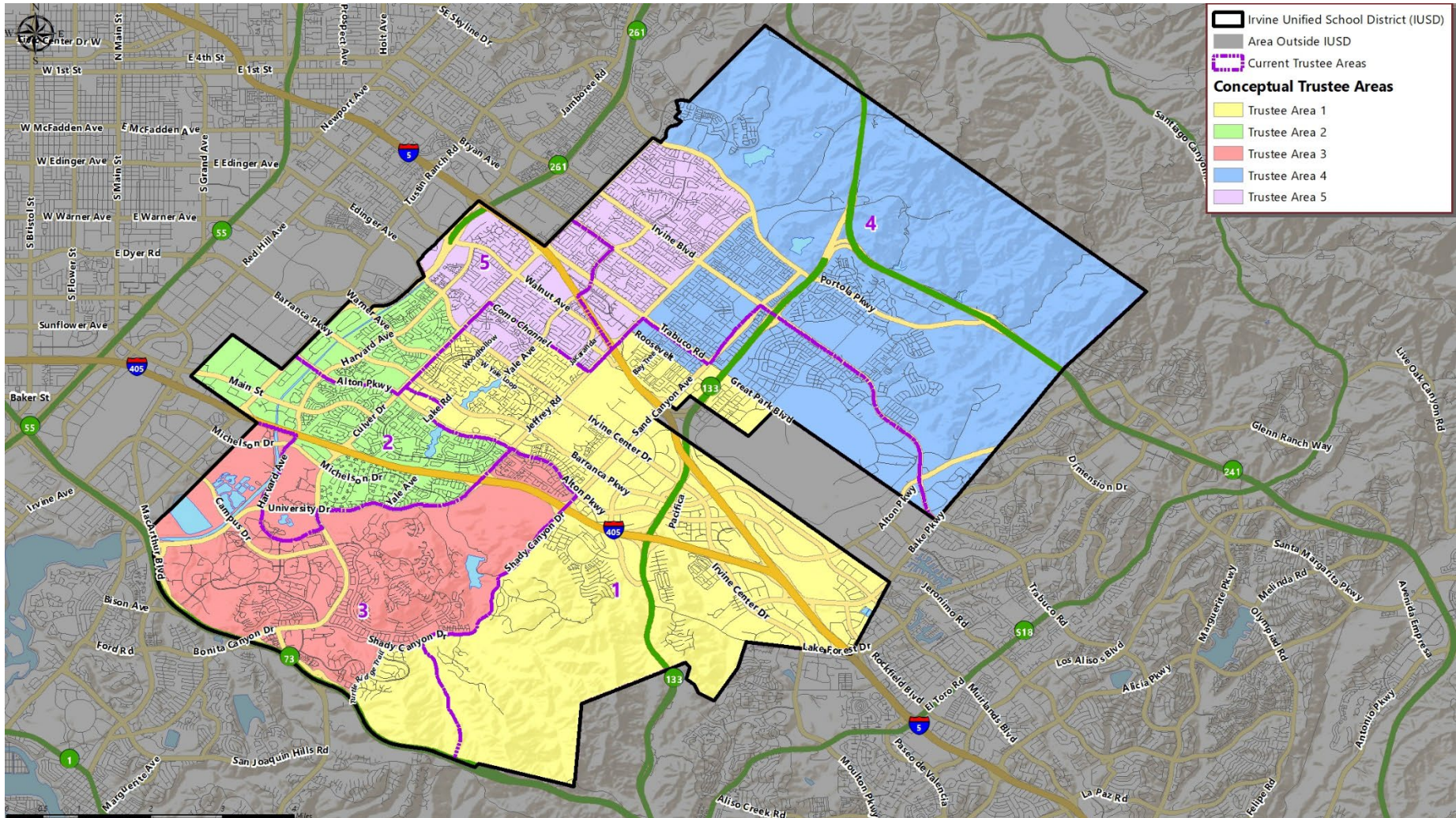
FEBRUARY 16, 2022



COOPERATIVE
STRATEGIES
ASSESS • PLAN • FUND • BUILD

► CONCEPTUAL TRUSTEE AREAS

SCENARIO 1A



► **DEMOGRAPHICS**
SCENARIO 1A

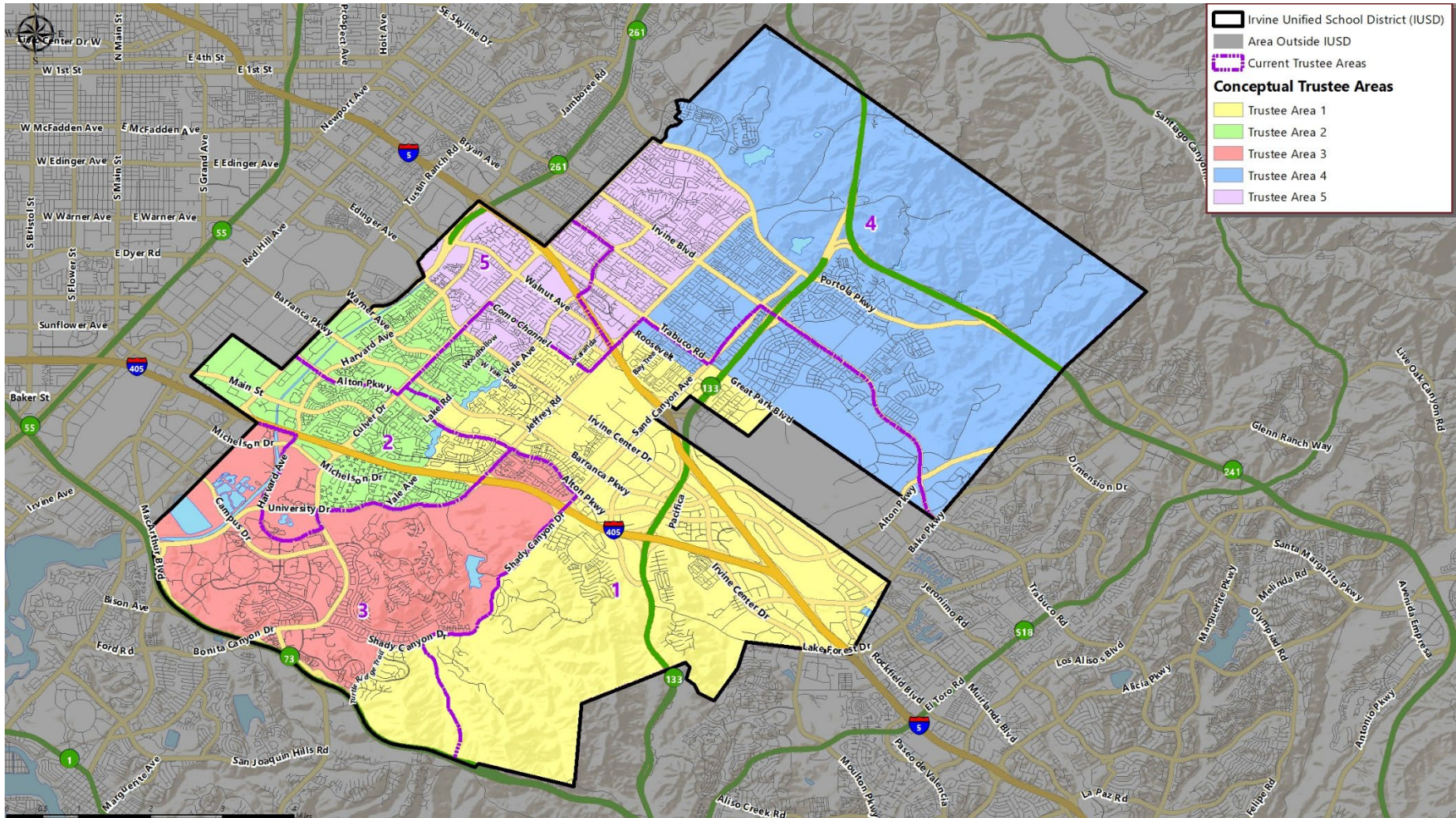
Total Population:	272,841		Ideal Trustee Area Size:		54,568		Variance:		5.5%	
TRUSTEE AREA	Trustee Area 1		Trustee Area 2		Trustee Area 3		Trustee Area 4		Trustee Area 5	
TP* vs. CVAP**	TP	CVAP	TP	CVAP	TP	CVAP	TP	CVAP	TP	CVAP
Population	54,306	30,626	53,072	31,393	53,897	31,297	56,095	19,234	55,471	35,404
Population Variance	-0.5%	N/A	-2.7%	N/A	-1.2%	N/A	2.8%	N/A	1.7%	N/A
Hispanic/Latino	9.8%	9.1%	12.1%	12.1%	19.2%	17.6%	7.7%	6.6%	10.5%	10.5%
White	42.1%	55.4%	38.9%	54.5%	35.9%	48.4%	23.5%	39.2%	32.2%	46.9%
Black/African American	1.6%	1.6%	2.4%	1.8%	3.4%	1.8%	1.7%	1.3%	1.7%	2.2%
American Indian/Alaska Native	0.1%	0.1%	0.1%	0.2%	0.1%	0.3%	0.1%	0.6%	0.1%	0.0%
Asian	40.1%	30.6%	40.0%	27.6%	34.4%	28.0%	61.6%	50.1%	49.6%	37.1%
Native Hawaiian/Other Pacific Islander	0.1%	0.0%	0.1%	0.2%	0.1%	0.1%	0.1%	0.1%	0.1%	0.2%
Other	0.8%	0.0%	0.7%	0.0%	0.6%	0.0%	0.4%	0.0%	0.5%	0.0%
Two or More Races	5.4%	3.1%	5.7%	3.6%	6.4%	3.8%	5.0%	2.1%	5.3%	3.1%

*Total Population; Source: Redistricting Database for California, Published by Statewide Database on September 20, 2021

**Citizen Voting Age Population (CVAP); Source: American Community Survey, 2015-2019 Data

► CONCEPTUAL TRUSTEE AREAS

SCENARIO 2A



► DEMOGRAPHICS

SCENARIO 2A

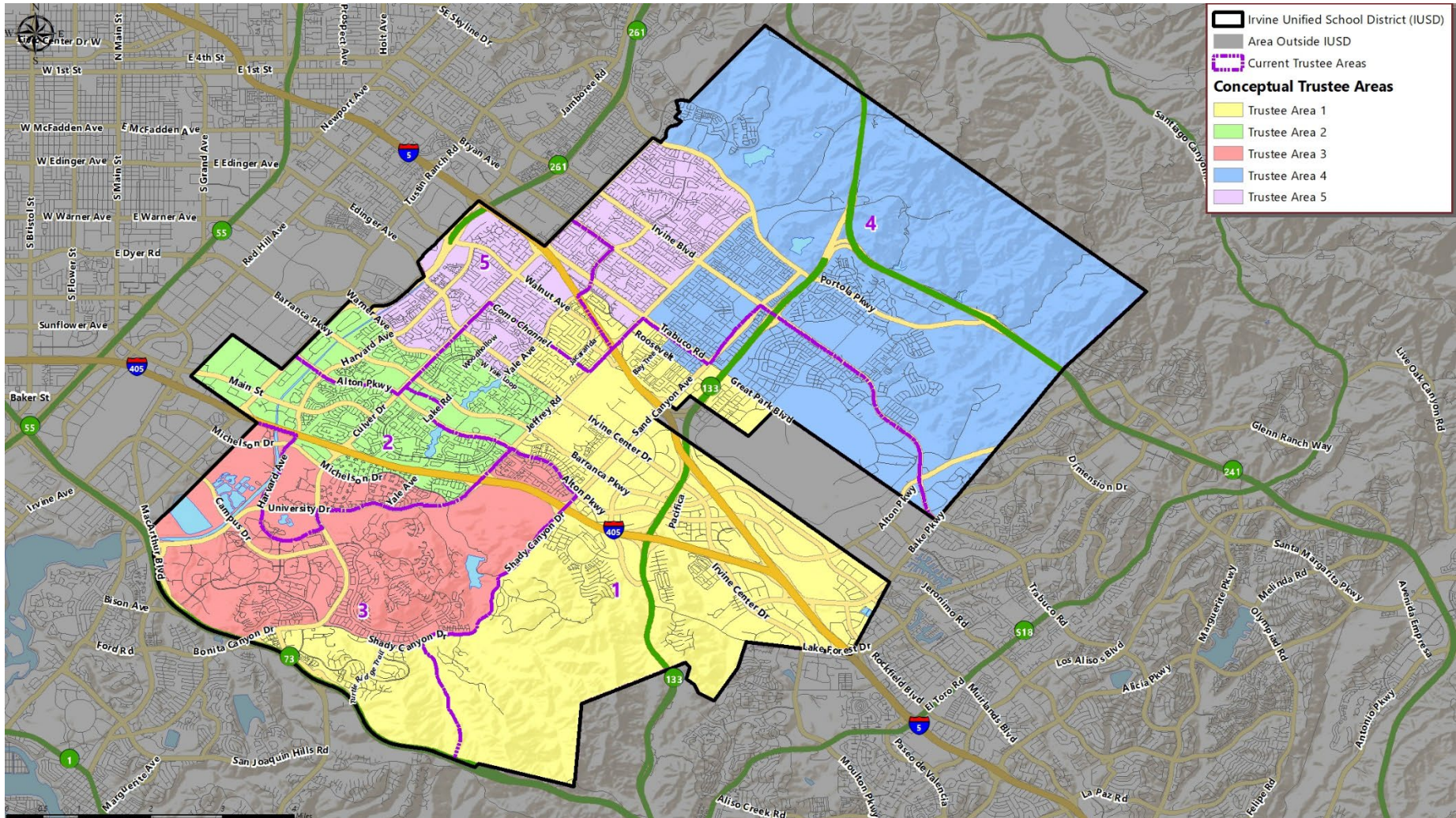
Total Population:	272,841		Ideal Trustee Area Size:		54,568		Variance:		4.4%	
TRUSTEE AREA	Trustee Area 1		Trustee Area 2		Trustee Area 3		Trustee Area 4		Trustee Area 5	
TP* vs. CVAP**	TP	CVAP	TP	CVAP	TP	CVAP	TP	CVAP	TP	CVAP
Population	53,719	30,588	54,316	32,034	53,897	31,297	56,095	19,234	54,814	34,801
Population Variance	-1.6%	N/A	-0.5%	N/A	-1.2%	N/A	2.8%	N/A	0.5%	N/A
Hispanic/Latino	10.4%	9.9%	11.5%	11.3%	19.2%	17.6%	7.7%	6.6%	10.4%	10.5%
White	41.6%	55.6%	39.6%	54.7%	35.9%	48.4%	23.5%	39.2%	31.9%	46.5%
Black/African American	1.6%	1.5%	2.3%	1.9%	3.4%	1.8%	1.7%	1.3%	1.7%	2.2%
American Indian/Alaska Native	0.1%	0.1%	0.1%	0.2%	0.1%	0.3%	0.1%	0.6%	0.1%	0.0%
Asian	40.0%	29.9%	39.9%	28.1%	34.4%	28.0%	61.6%	50.1%	50.0%	37.5%
Native Hawaiian/Other Pacific Islander	0.1%	0.0%	0.1%	0.2%	0.1%	0.1%	0.1%	0.1%	0.1%	0.2%
Other	0.8%	0.0%	0.7%	0.0%	0.6%	0.0%	0.4%	0.0%	0.5%	0.0%
Two or More Races	5.5%	3.1%	5.6%	3.6%	6.4%	3.8%	5.0%	2.1%	5.4%	3.1%

*Total Population; Source: Redistricting Database for California, Published by Statewide Database on September 20, 2021

**Citizen Voting Age Population (CVAP); Source: American Community Survey, 2015-2019 Data

► CONCEPTUAL TRUSTEE AREAS

SCENARIO 3A



► DEMOGRAPHICS
SCENARIO 3A

Total Population:	272,841		Ideal Trustee Area Size:		54,568		Variance:		4.0%	
TRUSTEE AREA	Trustee Area 1		Trustee Area 2		Trustee Area 3		Trustee Area 4		Trustee Area 5	
TP* vs. CVAP**	TP	CVAP	TP	CVAP	TP	CVAP	TP	CVAP	TP	CVAP
Population	53,311	28,534	54,768	33,022	55,507	33,827	54,769	18,793	54,486	33,778
Population Variance	-2.3%	N/A	0.4%	N/A	1.7%	N/A	0.4%	N/A	-0.2%	N/A
Hispanic/Latino	10.5%	10.1%	12.2%	11.9%	19.1%	16.8%	7.7%	6.5%	9.4%	10.0%
White	39.0%	50.8%	42.0%	56.7%	36.1%	50.3%	23.4%	39.1%	31.6%	46.8%
Black/African American	2.0%	2.3%	2.3%	1.7%	3.4%	1.8%	1.7%	1.2%	1.3%	1.8%
American Indian/Alaska Native	0.1%	0.2%	0.1%	0.2%	0.1%	0.3%	0.1%	0.6%	0.1%	0.0%
Asian	42.1%	33.0%	37.1%	25.9%	34.3%	27.1%	61.7%	50.4%	51.5%	38.4%
Native Hawaiian/Other Pacific Islander	0.1%	0.0%	0.1%	0.2%	0.1%	0.1%	0.1%	0.1%	0.1%	0.2%
Other	0.8%	0.0%	0.7%	0.0%	0.6%	0.0%	0.4%	0.0%	0.5%	0.0%
Two or More Races	5.4%	3.6%	5.5%	3.5%	6.4%	3.7%	5.0%	2.1%	5.4%	2.7%

*Total Population; Source: Redistricting Database for California, Published by Statewide Database on September 20, 2021

**Citizen Voting Age Population (CVAP); Source: American Community Survey, 2015-2019 Data



QUESTIONS

A row of yellow school buses is parked in a grassy field under a cloudy sky. The buses are slightly out of focus, and the overall image has a dark, moody tone. A large, stylized, semi-transparent letter 'E' graphic is overlaid on the image, serving as a background for the text.