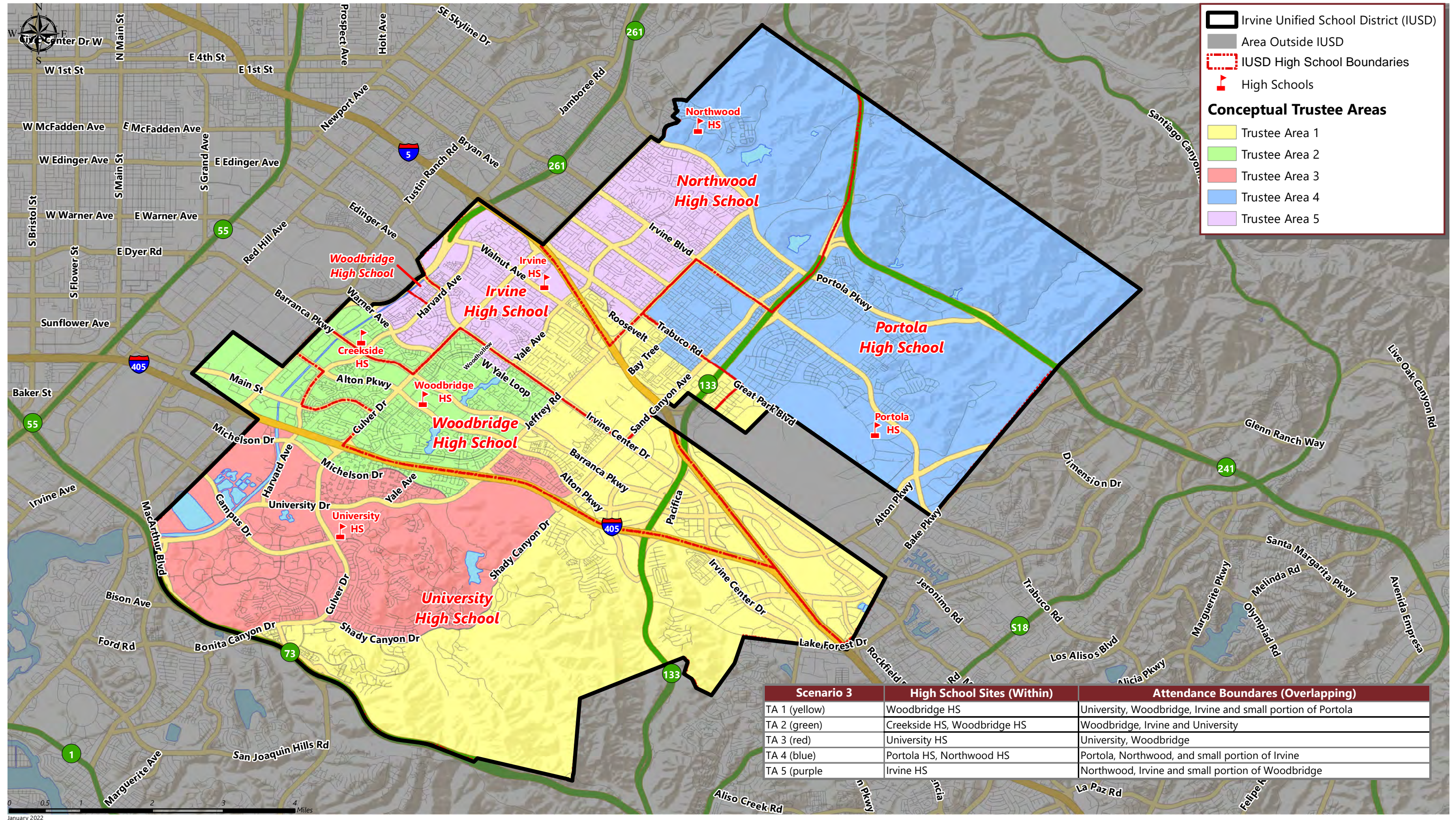


January 2022



Legend

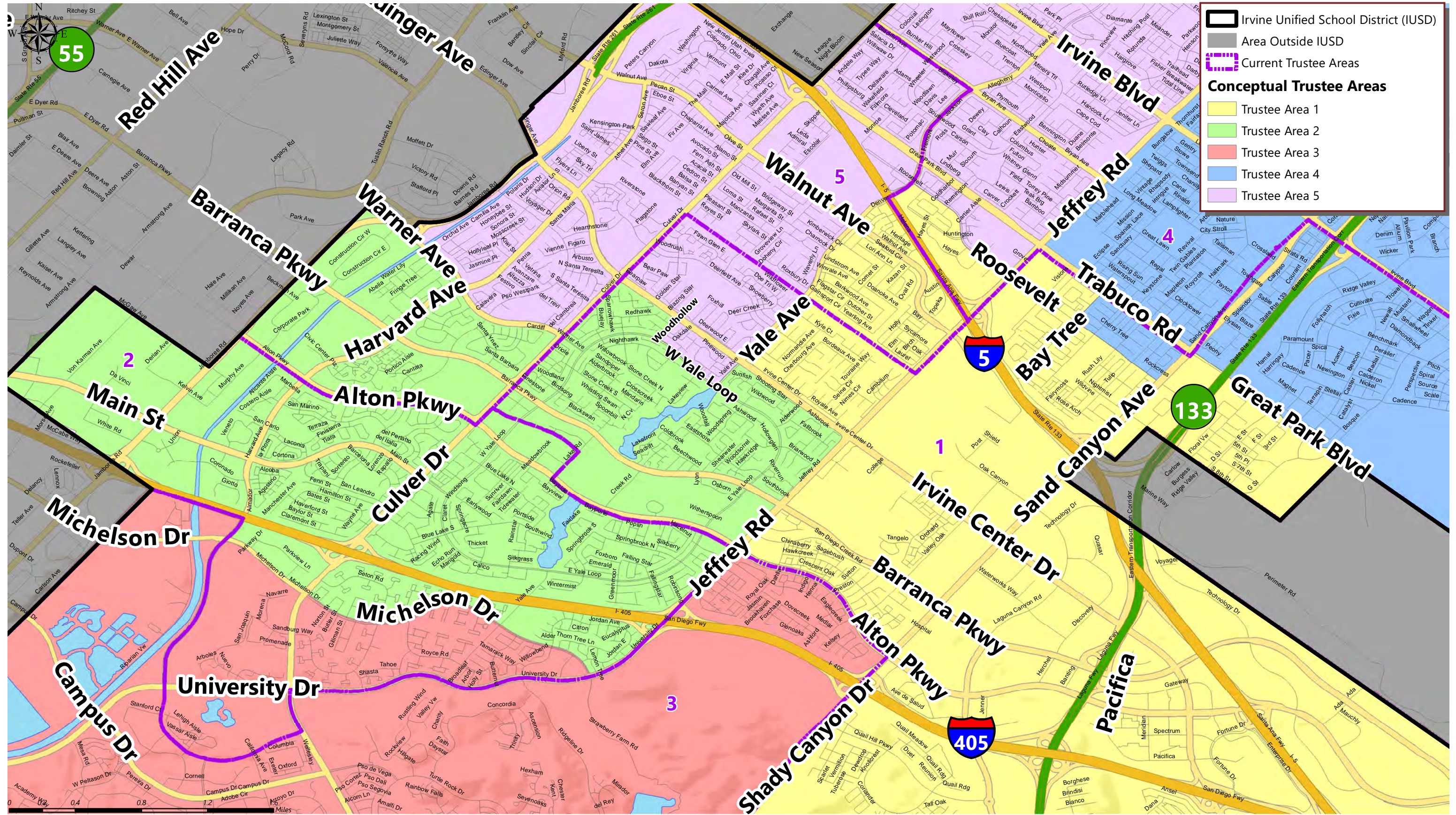
- Irvine Unified School District (IUSD)
- Area Outside IUSD
- IUSD High School Boundaries
- High Schools

Conceptual Trustee Areas

- Trustee Area 1 (Yellow)
- Trustee Area 2 (Green)
- Trustee Area 3 (Red)
- Trustee Area 4 (Blue)
- Trustee Area 5 (Purple)

Scenario 3	High School Sites (Within)	Attendance Boundares (Overlapping)
TA 1 (yellow)	Woodbridge HS	University, Woodbridge, Irvine and small portion of Portola
TA 2 (green)	Creekside HS, Woodbridge HS	Woodbridge, Irvine and University
TA 3 (red)	University HS	University, Woodbridge
TA 4 (blue)	Portola HS, Northwood HS	Portola, Northwood, and small portion of Irvine
TA 5 (purple)	Irvine HS	Northwood, Irvine and small portion of Woodbridge

January 2022

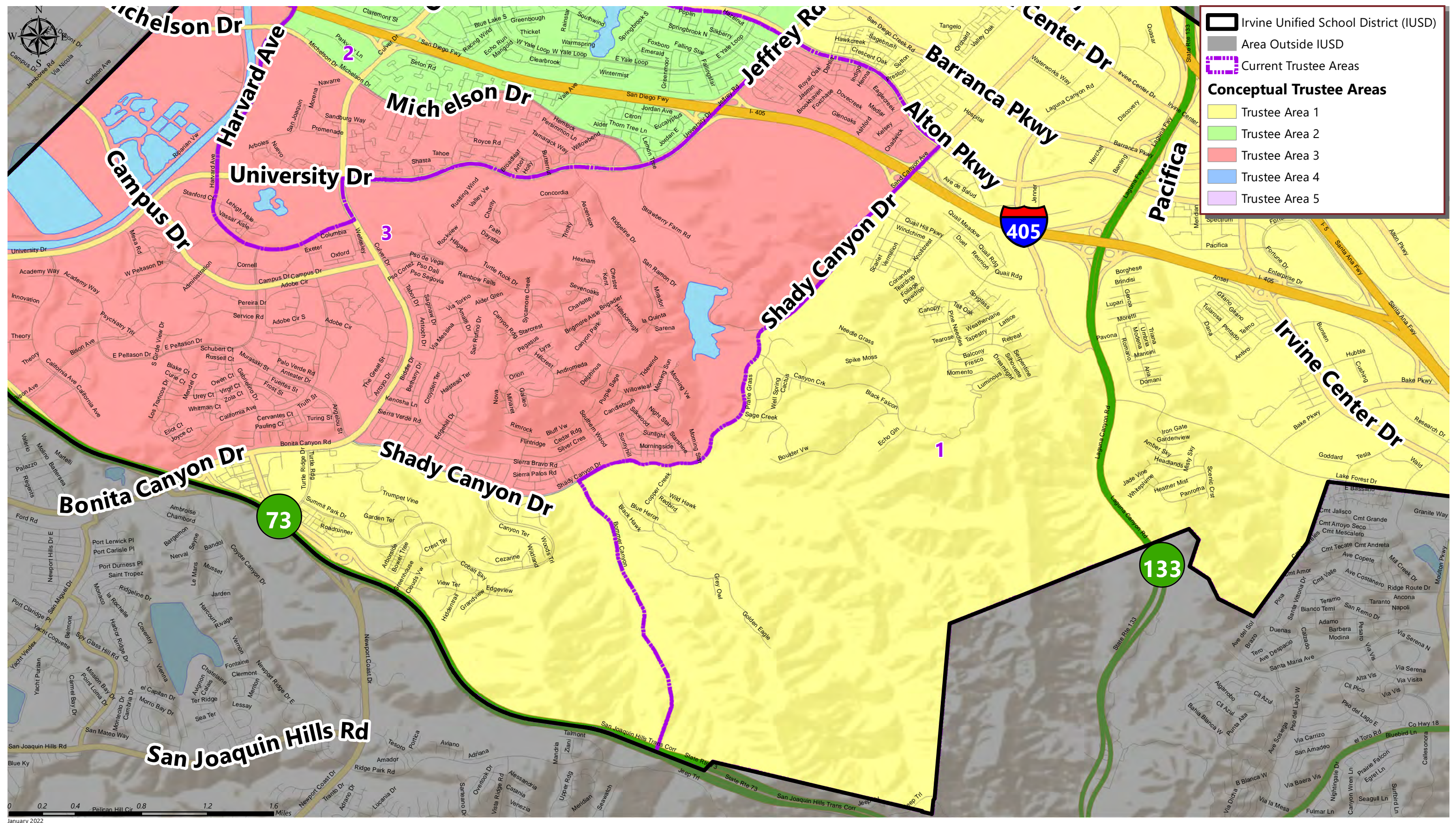


Irvine Unified School District (IUSD)

- Irvine Unified School District (IUSD)
- Area Outside IUSD
- Current Trustee Areas

Conceptual Trustee Areas

- Trustee Area 1
- Trustee Area 2
- Trustee Area 3
- Trustee Area 4
- Trustee Area 5



January 2022

IRVINE UNIFIED SCHOOL DISTRICT

CONCEPTUAL TRUSTEE AREAS - SCENARIO 3

Total Population:	272,841	Ideal Population:	54,568	Variance:	4.0%
--------------------------	----------------	--------------------------	---------------	------------------	-------------

Total Population (2020 Census)					
	Trustee Area 1	Trustee Area 2	Trustee Area 3	Trustee Area 4	Trustee Area 5
Population	53,311	54,768	55,507	54,769	54,486
Population Variance	-1,257	200	939	201	-82
	-2.3%	0.4%	1.7%	0.4%	-0.2%
Hispanic/Latino	10.5%	12.2%	19.1%	7.7%	9.4%
White	39.0%	42.0%	36.1%	23.4%	31.6%
Black/ African American	2.0%	2.3%	3.4%	1.7%	1.3%
American Indian/ Alaska Native	0.1%	0.1%	0.1%	0.1%	0.1%
Asian	42.1%	37.1%	34.3%	61.7%	51.5%
Native Hawaiian/ Other Pacific Islander	0.1%	0.1%	0.1%	0.1%	0.1%
Other	0.8%	0.7%	0.6%	0.4%	0.5%
Two or More Races	5.4%	5.5%	6.4%	5.0%	5.4%

Population 18 and Over (2020 Census)					
	Trustee Area 1	Trustee Area 2	Trustee Area 3	Trustee Area 4	Trustee Area 5
Population	41,852	43,706	48,738	38,738	41,999
Hispanic/Latino	10.2%	11.3%	20.0%	7.3%	8.8%
White	41.4%	43.9%	36.2%	25.4%	34.3%
Black/ African American	1.9%	2.2%	3.7%	1.8%	1.3%
American Indian/ Alaska Native	0.1%	0.1%	0.1%	0.1%	0.1%
Asian	41.1%	37.3%	33.7%	61.6%	51.0%
Native Hawaiian/ Other Pacific Islander	0.1%	0.1%	0.0%	0.1%	0.1%
Other	0.7%	0.7%	0.5%	0.4%	0.4%
Two or More Races	4.5%	4.4%	5.8%	3.4%	4.0%

Citizens by Voting Age Population Estimate (2015-2019)					
	Trustee Area 1	Trustee Area 2	Trustee Area 3	Trustee Area 4	Trustee Area 5
Population	28,534	33,022	33,827	18,793	33,778
Hispanic/Latino	10.1%	11.9%	16.8%	6.5%	10.0%
White	50.8%	56.7%	50.3%	39.1%	46.8%
Black/ African American	2.3%	1.7%	1.8%	1.2%	1.8%
American Indian/ Alaska Native	0.2%	0.2%	0.3%	0.6%	0.0%
Asian	33.0%	25.9%	27.1%	50.4%	38.4%
Native Hawaiian/ Other Pacific Islander	0.0%	0.2%	0.1%	0.1%	0.2%
Other	0.0%	0.0%	0.0%	0.0%	0.0%
Two or More Races	3.6%	3.5%	3.7%	2.1%	2.7%