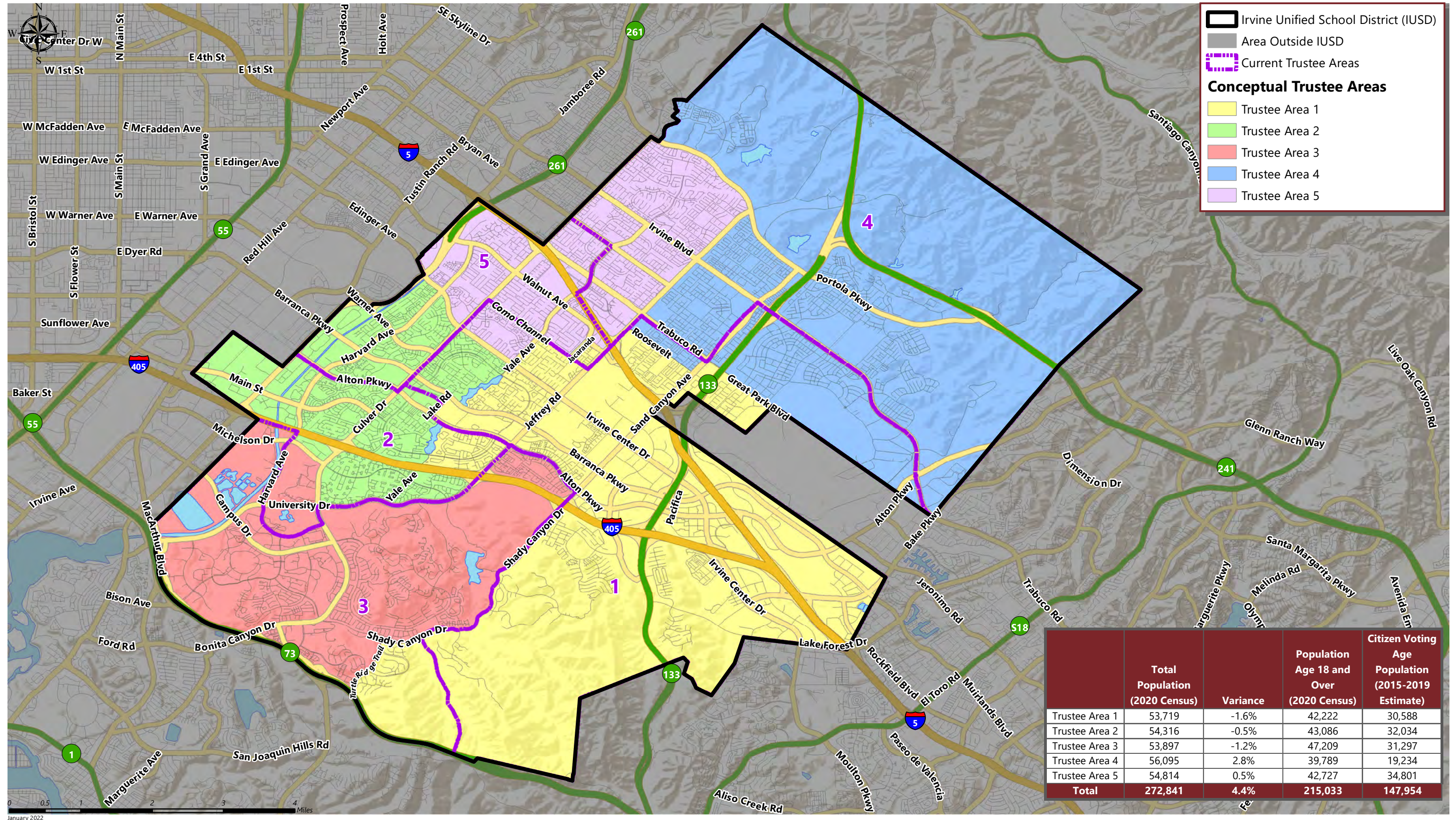
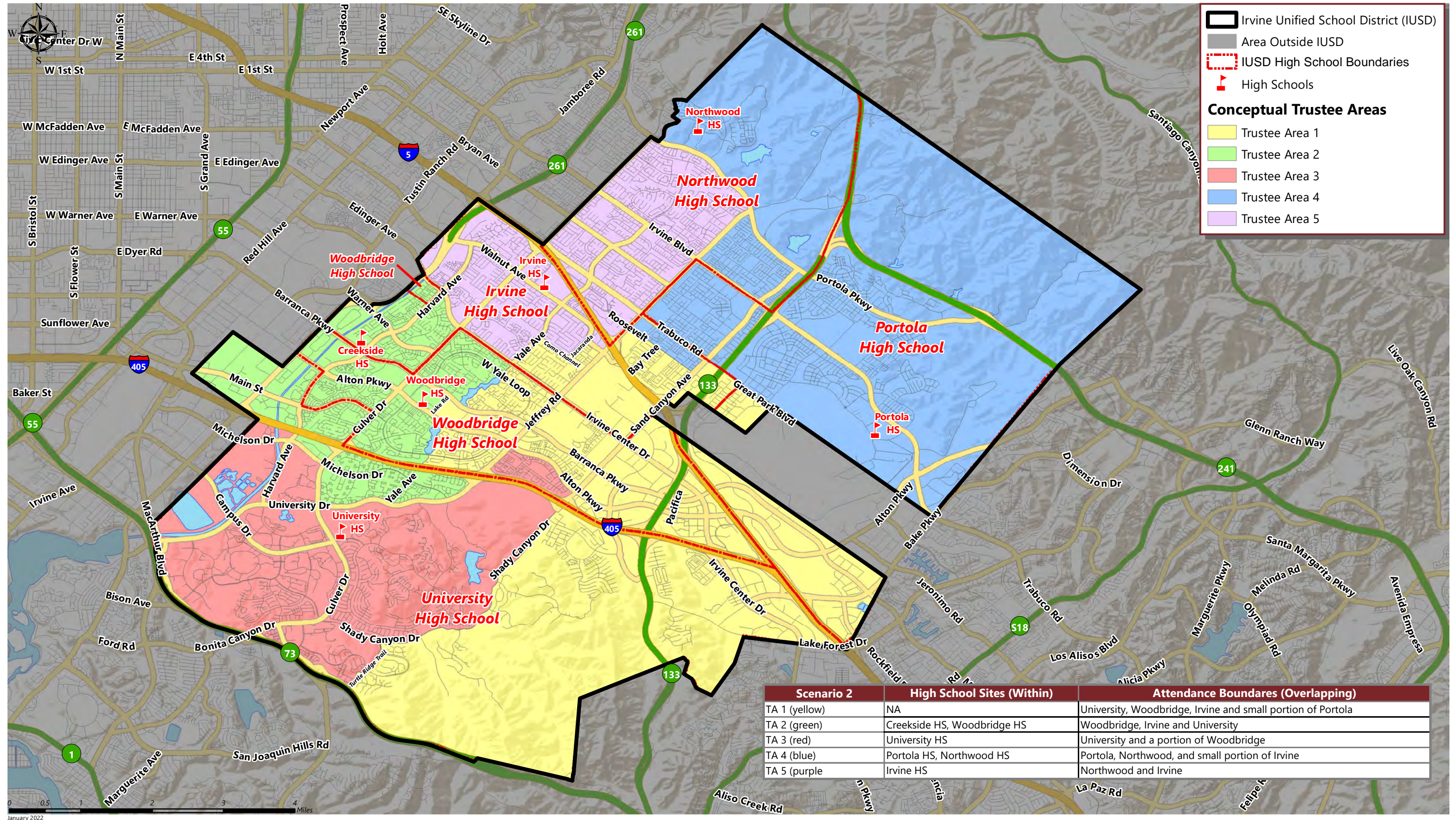


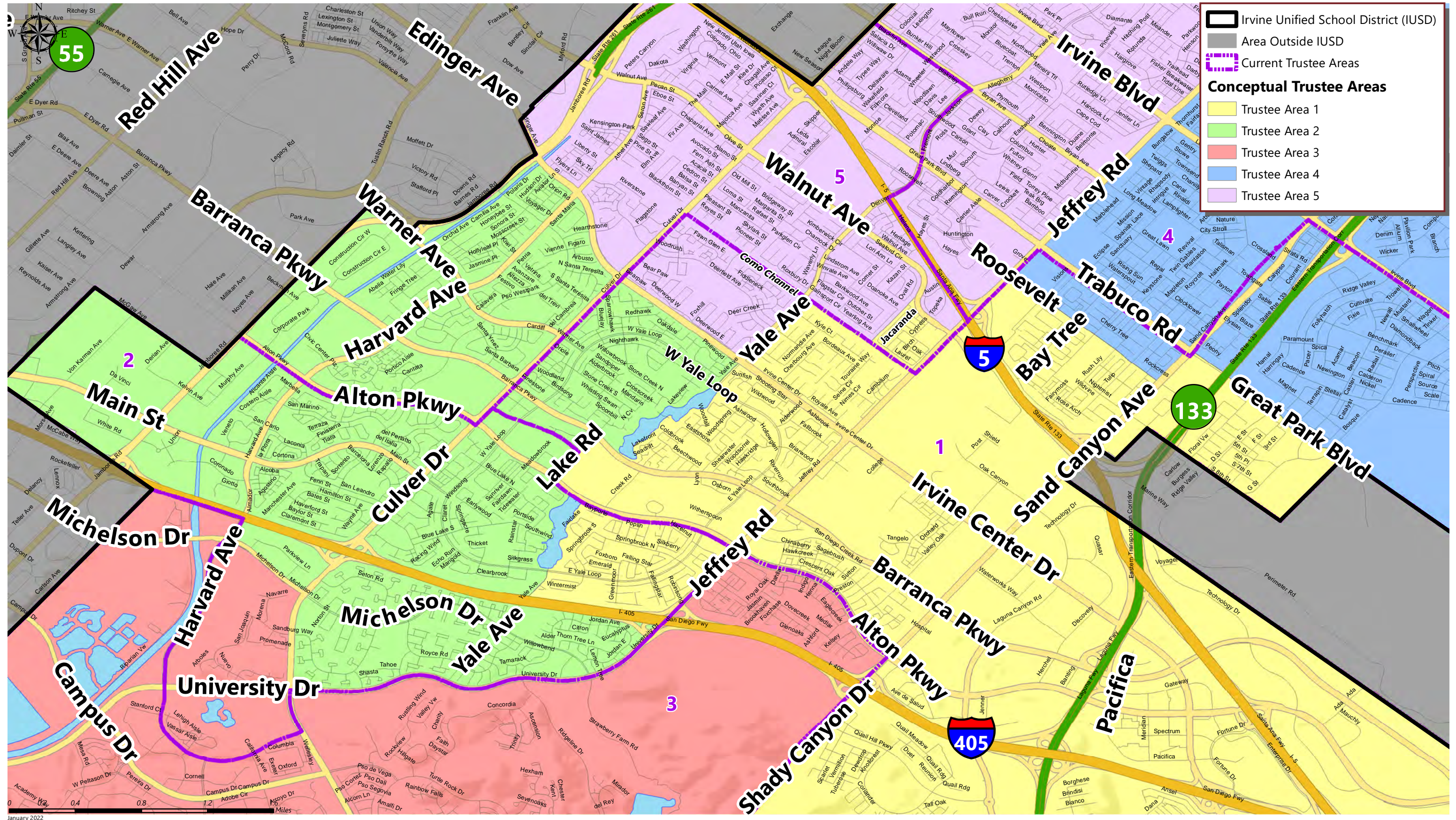
IRVINE UNIFIED SCHOOL DISTRICT

CONCEPTUAL TRUSTEE AREAS - SCENARIO 2

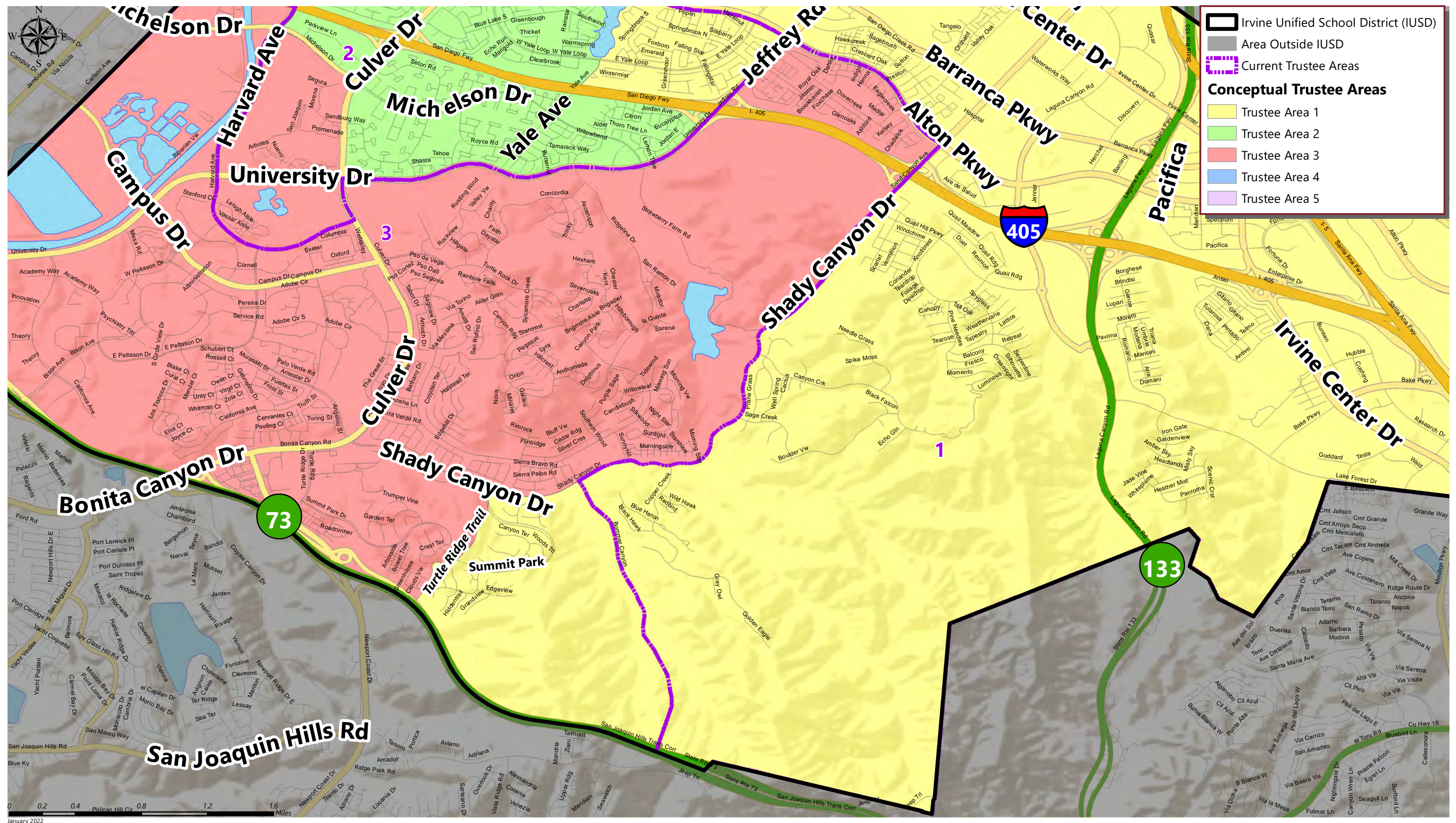


January 2022





January 2022



January 2022

IRVINE UNIFIED SCHOOL DISTRICT

CONCEPTUAL TRUSTEE AREAS - SCENARIO 2

Total Population:	272,841	Ideal Population:	54,568	Variance:	4.4%
--------------------------	----------------	--------------------------	---------------	------------------	-------------

Total Population (2020 Census)					
	Trustee Area 1	Trustee Area 2	Trustee Area 3	Trustee Area 4	Trustee Area 5
Population	53,719	54,316	53,897	56,095	54,814
Population Variance	-849	-252	-671	1,527	246
	-1.6%	-0.5%	-1.2%	2.8%	0.5%
Hispanic/Latino	10.4%	11.5%	19.2%	7.7%	10.4%
White	41.6%	39.6%	35.9%	23.5%	31.9%
Black/ African American	1.6%	2.3%	3.4%	1.7%	1.7%
American Indian/ Alaska Native	0.1%	0.1%	0.1%	0.1%	0.1%
Asian	40.0%	39.9%	34.4%	61.6%	50.0%
Native Hawaiian/ Other Pacific Islander	0.1%	0.1%	0.1%	0.1%	0.1%
Other	0.8%	0.7%	0.6%	0.4%	0.5%
Two or More Races	5.5%	5.6%	6.4%	5.0%	5.4%

Population 18 and Over (2020 Census)					
	Trustee Area 1	Trustee Area 2	Trustee Area 3	Trustee Area 4	Trustee Area 5
Population	42,222	43,086	47,209	39,789	42,727
Hispanic/Latino	9.9%	10.7%	20.2%	7.3%	9.8%
White	44.3%	41.7%	35.8%	25.5%	34.4%
Black/ African American	1.7%	2.2%	3.7%	1.8%	1.6%
American Indian/ Alaska Native	0.1%	0.1%	0.1%	0.1%	0.1%
Asian	38.7%	40.0%	33.9%	61.5%	49.5%
Native Hawaiian/ Other Pacific Islander	0.1%	0.1%	0.0%	0.1%	0.1%
Other	0.7%	0.7%	0.5%	0.4%	0.5%
Two or More Races	4.6%	4.4%	5.7%	3.4%	4.0%

Citizens by Voting Age Population Estimate (2015-2019)					
	Trustee Area 1	Trustee Area 2	Trustee Area 3	Trustee Area 4	Trustee Area 5
Population	30,588	32,034	31,297	19,234	34,801
Hispanic/Latino	9.9%	11.3%	17.6%	6.6%	10.5%
White	55.6%	54.7%	48.4%	39.2%	46.5%
Black/ African American	1.5%	1.9%	1.8%	1.3%	2.2%
American Indian/ Alaska Native	0.1%	0.2%	0.3%	0.6%	0.0%
Asian	29.9%	28.1%	28.0%	50.1%	37.5%
Native Hawaiian/ Other Pacific Islander	0.0%	0.2%	0.1%	0.1%	0.2%
Other	0.0%	0.0%	0.0%	0.0%	0.0%
Two or More Races	3.1%	3.6%	3.8%	2.1%	3.1%