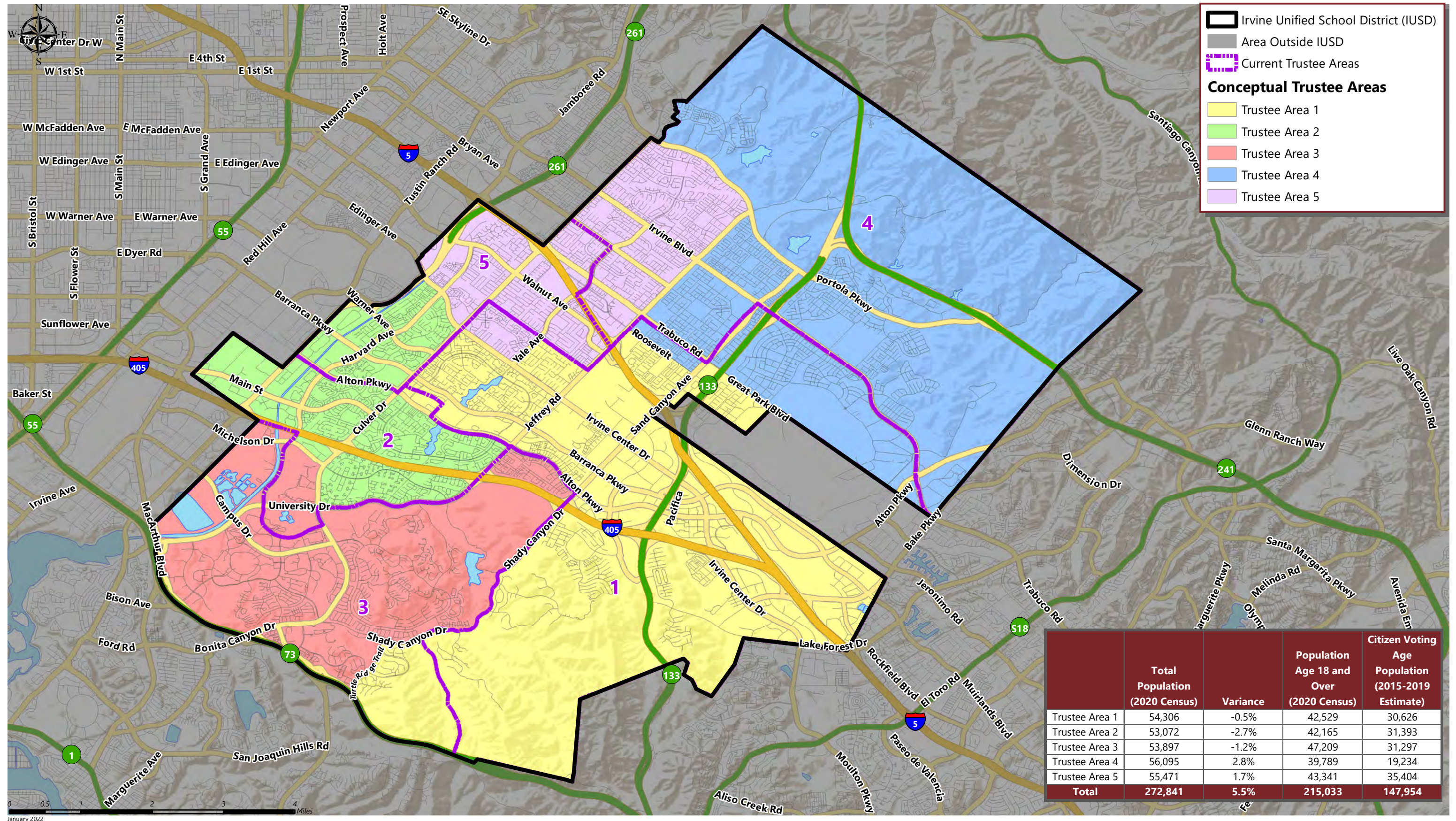


IRVINE UNIFIED SCHOOL DISTRICT

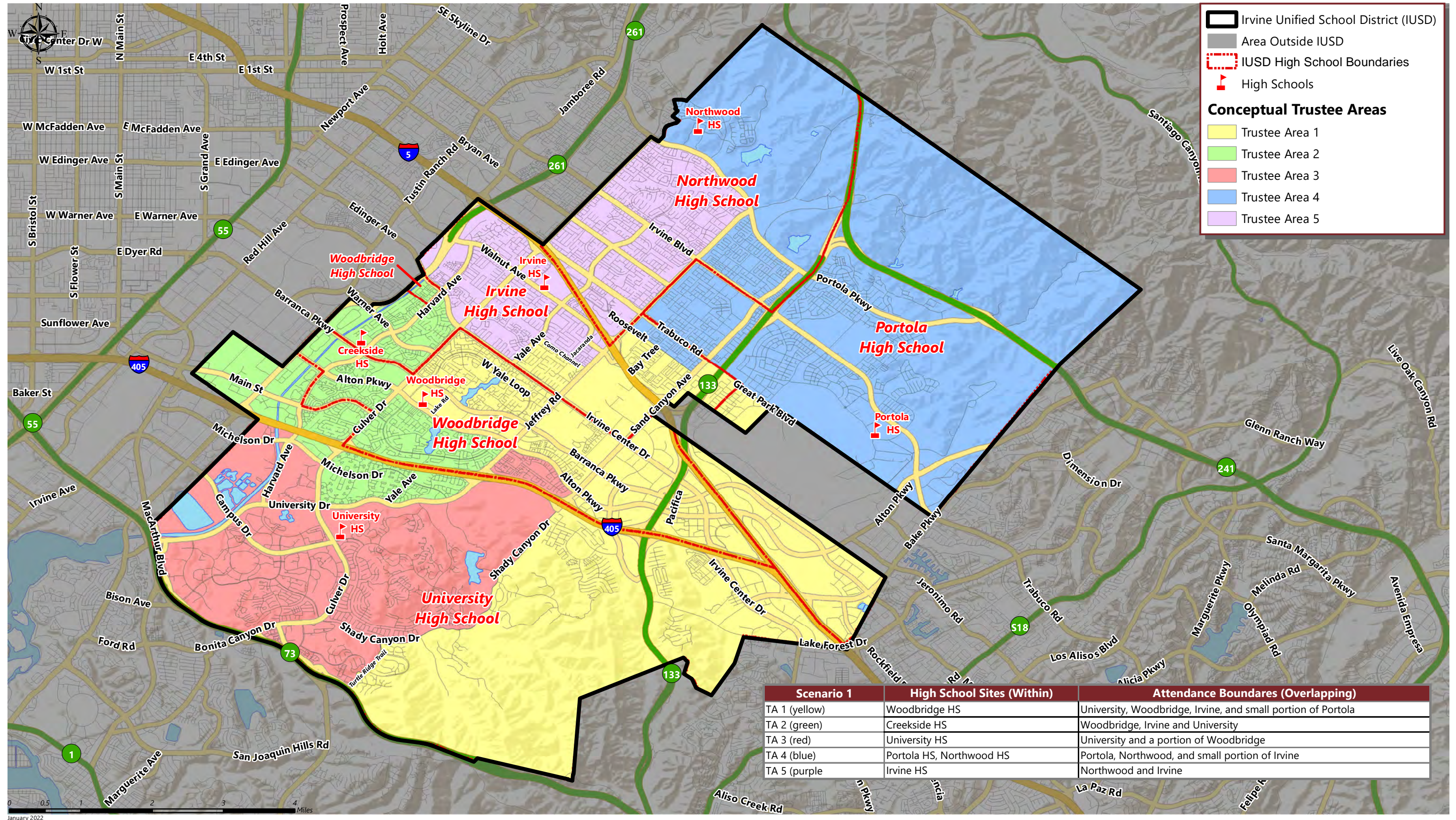
CONCEPTUAL TRUSTEE AREAS - SCENARIO 1A



January 2022

IRVINE UNIFIED SCHOOL DISTRICT

CONCEPTUAL TRUSTEE AREAS - SCENARIO 1A



Legend

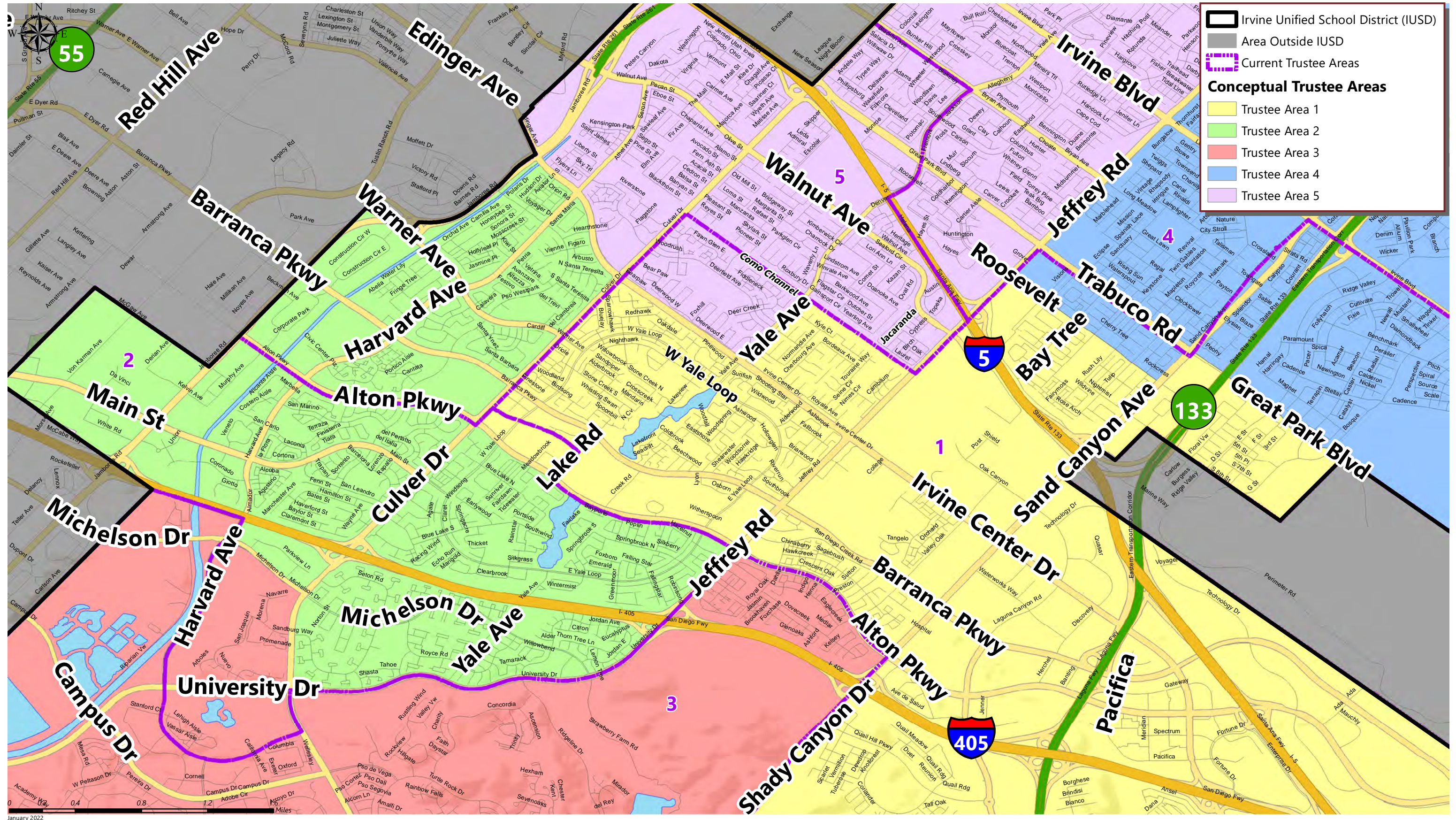
- Irvine Unified School District (IUSD)
- Area Outside IUSD
- IUSD High School Boundaries
- High Schools

Conceptual Trustee Areas

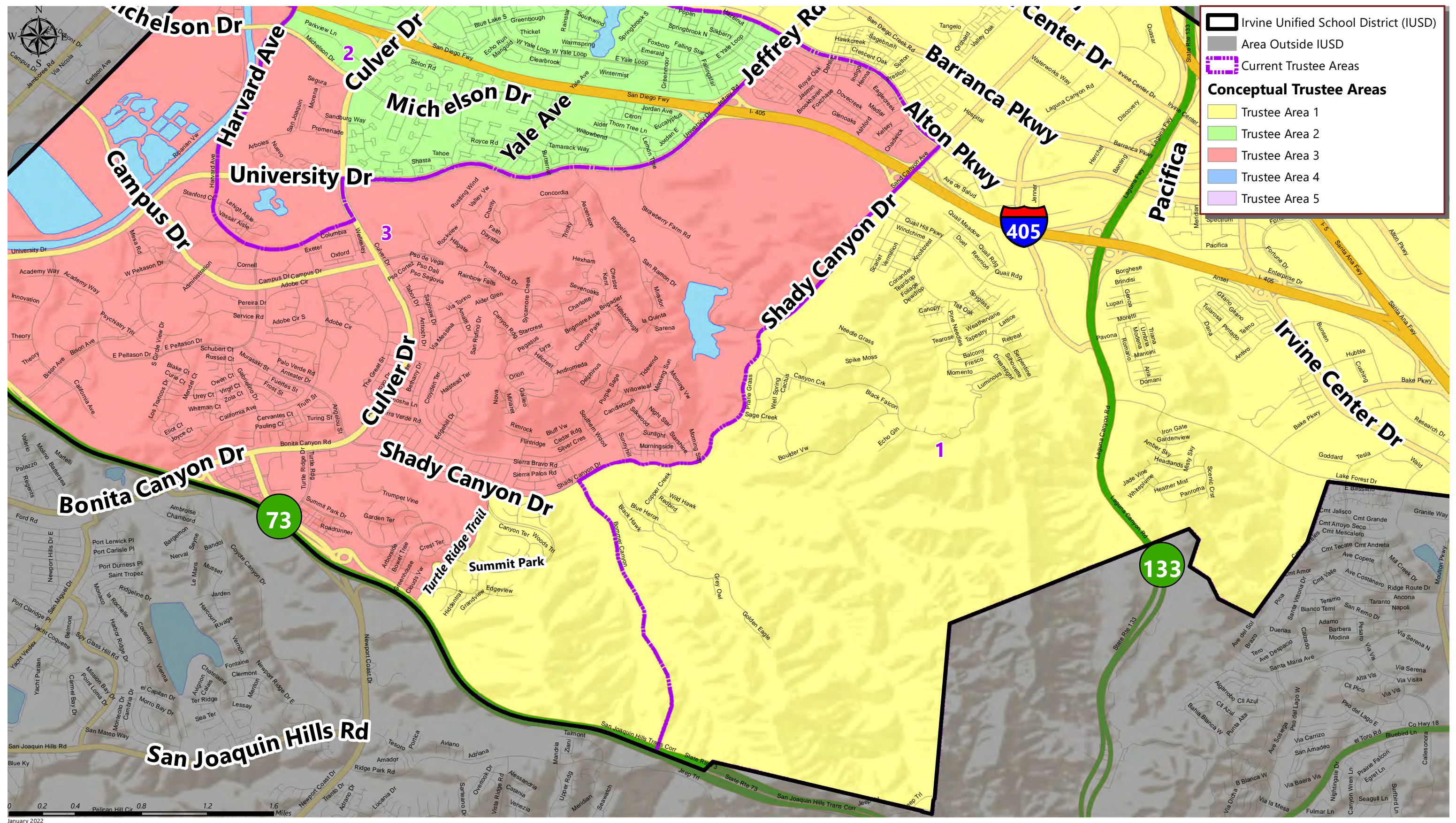
- Trustee Area 1 (Yellow)
- Trustee Area 2 (Green)
- Trustee Area 3 (Red)
- Trustee Area 4 (Blue)
- Trustee Area 5 (Purple)

Scenario 1	High School Sites (Within)	Attendance Boundares (Overlapping)
TA 1 (yellow)	Woodbridge HS	University, Woodbridge, Irvine, and small portion of Portola
TA 2 (green)	Creekside HS	Woodbridge, Irvine and University
TA 3 (red)	University HS	University and a portion of Woodbridge
TA 4 (blue)	Portola HS, Northwood HS	Portola, Northwood, and small portion of Irvine
TA 5 (purple)	Irvine HS	Northwood and Irvine

January 2022



January 2022



January 2022

IRVINE UNIFIED SCHOOL DISTRICT

CONCEPTUAL TRUSTEE AREAS - SCENARIO 1A

Total Population:	272,841	Ideal Population:	54,568	Variance:	5.5%
--------------------------	----------------	--------------------------	---------------	------------------	-------------

Total Population (2020 Census)					
	Trustee Area 1	Trustee Area 2	Trustee Area 3	Trustee Area 4	Trustee Area 5
Population	54,306	53,072	53,897	56,095	55,471
Population Variance	-262	-1,496	-671	1,527	903
	-0.5%	-2.7%	-1.2%	2.8%	1.7%
Hispanic/Latino	9.8%	12.1%	19.2%	7.7%	10.5%
White	42.1%	38.9%	35.9%	23.5%	32.2%
Black/ African American	1.6%	2.4%	3.4%	1.7%	1.7%
American Indian/ Alaska Native	0.1%	0.1%	0.1%	0.1%	0.1%
Asian	40.1%	40.0%	34.4%	61.6%	49.6%
Native Hawaiian/ Other Pacific Islander	0.1%	0.1%	0.1%	0.1%	0.1%
Other	0.8%	0.7%	0.6%	0.4%	0.5%
Two or More Races	5.4%	5.7%	6.4%	5.0%	5.3%

Population 18 and Over (2020 Census)					
	Trustee Area 1	Trustee Area 2	Trustee Area 3	Trustee Area 4	Trustee Area 5
Population	42,529	42,165	47,209	39,789	43,341
Hispanic/Latino	9.4%	11.2%	20.2%	7.3%	9.9%
White	44.7%	40.9%	35.8%	25.5%	34.8%
Black/ African American	1.6%	2.3%	3.7%	1.8%	1.6%
American Indian/ Alaska Native	0.1%	0.1%	0.1%	0.1%	0.1%
Asian	39.0%	40.1%	33.9%	61.5%	49.0%
Native Hawaiian/ Other Pacific Islander	0.1%	0.1%	0.0%	0.1%	0.1%
Other	0.8%	0.7%	0.5%	0.4%	0.5%
Two or More Races	4.4%	4.6%	5.7%	3.4%	4.0%

Citizens by Voting Age Population Estimate (2015-2019)					
	Trustee Area 1	Trustee Area 2	Trustee Area 3	Trustee Area 4	Trustee Area 5
Population	30,626	31,393	31,297	19,234	35,404
Hispanic/Latino	9.1%	12.1%	17.6%	6.6%	10.5%
White	55.4%	54.5%	48.4%	39.2%	46.9%
Black/ African American	1.6%	1.8%	1.8%	1.3%	2.2%
American Indian/ Alaska Native	0.1%	0.2%	0.3%	0.6%	0.0%
Asian	30.6%	27.6%	28.0%	50.1%	37.1%
Native Hawaiian/ Other Pacific Islander	0.0%	0.2%	0.1%	0.1%	0.2%
Other	0.0%	0.0%	0.0%	0.0%	0.0%
Two or More Races	3.1%	3.6%	3.8%	2.1%	3.1%