

Parent Workshop: Dyslexia 101

Workshop Presented by:
Angela Weedn, PsyD., ABSNP and
Giselle Eaton, M.S.

Parent Workshop:
Dyslexia 101
Q & A

Ask a question
at...

Q and A

<https://goo.gl/ur1PJg>



Q & A

1. Type a question
2. Select "Submit"

Agenda

Parent Workshop: Dyslexia 101

- 3 Types of Dyslexia
- Supporting Emotional Well-being
- Strategies, Tools & Resources



“You can’t overcome it (dyslexia); you can work around it and make it work for you, but it never goes away. That’s probably a good thing, because if dyslexia went away, then the other gifts would go away too.”

Beryl Benacerraf, M.D., Physician. World-renowned radiologist and expert in ultrasound.



“Dyslexia is a specific learning disability that is neurobiological in origin. It is characterized by difficulties with accurate and/or fluent word recognition and by poor spelling and decoding abilities. These difficulties typically result from a deficit in the phonological component of language that is often unexpected in relation to other cognitive abilities and the provision of effective classroom instruction. Secondary consequences may include problems in reading comprehension and reduced reading experience that can impede growth of vocabulary and background knowledge.”

-International Dyslexia Association (2002)



Dyslexia Facts

DYSLEXIA is...

A brain based issue that makes it hard to learn and read accurately

A lifelong condition. Kids don't outgrow dyslexia, but with the right support, key skills can improve

A common learning issue. Many successful people have it, and researchers have been studying it for over a century

DYSLEXIA is *not*...

A problem of intelligence. Kids with dyslexia are just as smart as their peers.

A problem of vision. The core issue involves understanding how the *sounds* in words are represented by letters.


A problem of laziness. Kids with dyslexia are already trying hard.

Adapted from Dyslexia Fact Sheet from [Understood u.org/dyslexia](https://www.understood.org/dyslexia)





Kids with dyslexia
may have trouble
with...

- 
- Reading smoothly
 - Decoding (sounding out words)
 - Spelling
 - Recognizing common sight words
 - Rhyming
 - Solving word problems in math
 - Understanding what they read
 - Learning a foreign language.



Three Subtypes

Dysphonetic Dyslexia

Surface Dyslexia

Mixed Dyslexia



Dysphonetic Dyslexia

- Difficulty using the **phonological** route to reading
- Overcompensate using visual route
- Overly rely on visual cues rather than letter to sound conversions



Surface Dyslexia

- Slow reading due to poor **orthographic** processing
- Over reliance on sound symbol relationships
- Intact phoneme awareness and other phonological skills
- Specific weakness with speed of word recognition and automatic recall of word spellings.



The Importance of Orthographic Processing on Reading Fluency

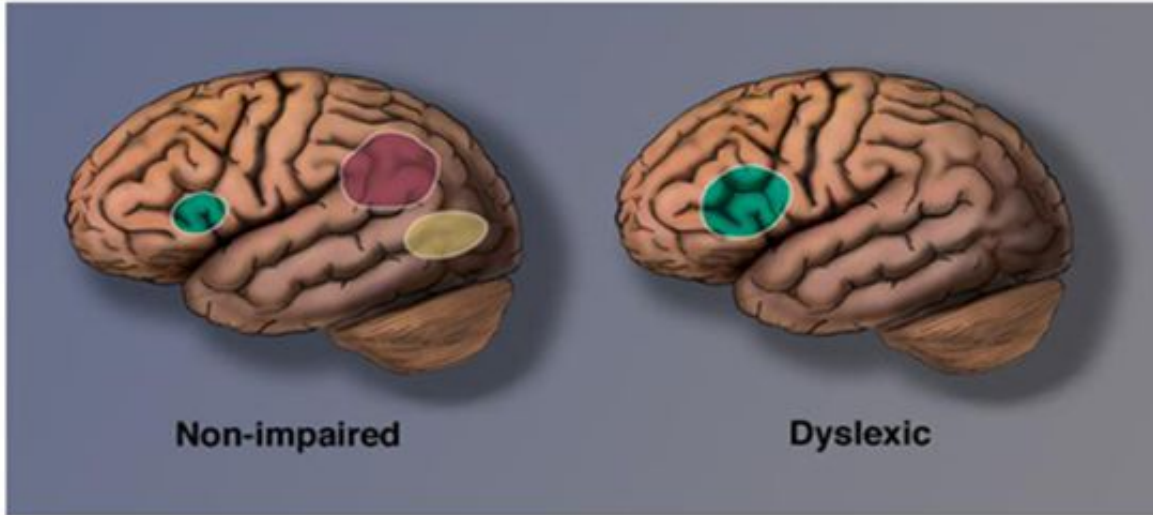
According to a research at an English university, it doesn't matter in what order the letters in a word are, the only important thing is that first an initial letter is at the right place. The rest can be a total mess and you can still read it without problem. This is because we do not read every letter by itself but the word as a whole.



Mixed Dyslexia

- Characteristics of both **phonological** and **orthographic** processing deficits.
- These readers have no usable key to the reading and spelling code.
- There are multiple breakdowns along many cognitive pathways modulating the entire reading process

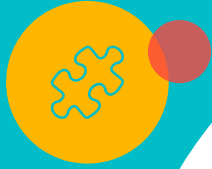
Neural Signature for Dyslexia: Disruption of Posterior Reading Systems



© Sally Shaywitz, *Overcoming Dyslexia*, 2003



The Importance of Early Intervention





What About
Special
Education?

Reasons why students who are dyslexic may not require special education services

- Student is not demonstrating “statistically significant underachievement” compared to general population
- Learning difficulties can be addressed with intervention within general education

When it's not dyslexia...

Other factors that frequently contribute to reading difficulties include

- Executive functioning deficits
- Global language delays
- Memory
- Processing speed
- Fluid reasoning difficulties

Parent Workshop:
Dyslexia 101
Q & A

Ask a question
at...

Q and A

<https://goo.gl/ur1PJg>



Q & A

1. Type a question
2. Select "Submit"

Supporting Emotional Well-Being

- Look for signs of emotional distress
- Give praise and support
- Focus on strengths
- Pick your battles

<https://www.nessy.com/us/parents/dyslexia-information/6-ways-parents-can-help-dyslexia/>



Dyslexiaville



Dyslexiaville.com



Parent/Teacher Guide to Super d!

- The SEL Company produces research-based, original programming, such as the Super d! Show, that builds social and emotional learning
- Short-form narrative series feature real kids with learning differences sharing real-life strategies for home and school
- Kids feel a sense of belonging in a community of other kids with learning differences
- Content helps to de-stigmatize learning differences, providing an antidote to the loneliness and low-self esteem

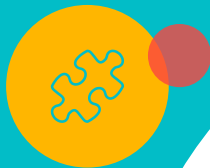
Supporting Emotional Well-Being



Super d! Show



Multisensory



Spelling Strategies

does



does **Oliver** eat spaghetti? - he **does**

<https://www.nessy.com/us/parents/dyslexia-information/6-ways-parents-can-help-dyslexia/>

Writing Strategies

- Graphic organizers
- Wordbank
- Keywords

<https://www.nessy.com/us/parents/dyslexia-information/6-ways-parents-can-help-dyslexia/>

Memory Strategies



<https://www.nessy.com/us/parents/dyslexia-information/6-ways-parents-can-help-dyslexia/>

Reading Tools & Strategies

- Index card
- Ruler /Bookmark
- Finger
- Short bursts
- Fluency practice
- Active Reading

<https://www.nessy.com/us/parents/dyslexia-information/6-ways-parents-can-help-dyslexia/>

Strengths of Dyslexia




- Seeing the bigger picture
- Finding the odd one out
- Good spatial knowledge
- Picture Thinkers
- Sharper peripheral vision
- Thinking outside the box- problem solving





Outcomes

Parent Workshop: Dyslexia 101

- 3 Types of Dyslexia
 - Supporting Emotional Well-being
 - Strategies, Tools & Resources
- 

Share Something **New** or **Interesting**
You Learned in Today's
Presentation...

<https://tinyurl.com/y8nfupbj>



Padlet

A white line-art icon of a lit lightbulb is centered within a red circle in the top-left corner of the slide. Other smaller circles in teal, orange, and pink are scattered around it.

Thanks!

Any questions?

You can contact us at

angelaweedn@iusd.org and giselleeaton@iusd.org

