

# Springbrook ES Modernization Public Information Meeting

November 29, 2018



# MEETING AGENDA

- Introductions
- Overview of Measure E Program
- Project Overview
- Resources
- Questions and Answers



# INTRODUCTIONS

- Kim Coffeen – IUSD, Director Facilities Planning
- Christa DeBoer – IUSD Supervisor, Facilities/Construction
- Tom Haney – CW Driver, Construction Manager

## Additional Team Members:

- Kelvin Okino – IUSD, Executive Director, Facilities Planning and Construction
- Sunny Shen – IUSD, Principal of Springbrook ES
- Annie Brown – IUSD, Public Information Officer
- Joe Kelly – Sprotte Watson Architect



# Overview of Measure E Program



# HISTORY OF MEASURE E

- **Comprehensive plan created in 2012**
- **Refined in 2015 with current cost estimates**
  - Districtwide improvement needs over **\$800.0** million
  - Districtwide needs include:
    - facilities improvements
    - enrollment growth
    - site upgrades
    - upgrades to non-school site facilities
- **Determined the need for a General Obligation Bond**



# SFID BOND MEASURE

- **Schools Facility Improvement District (SFID)**
  - Carved out newer schools under a Mitigation Agreement (Mello-Roos)
  - Focused on 28 schools of the 38 schools
- **June 7, 2016 Ballot**
  - \$319.0 million Bond Measure (Measure E)
  - \$29 / \$100,000 assessed value tax increase
  - Four bond series sales
  - Proposition 39 (School Facilities Local Vote Act of 2000)
  - Passed at 60.2% (55% required)

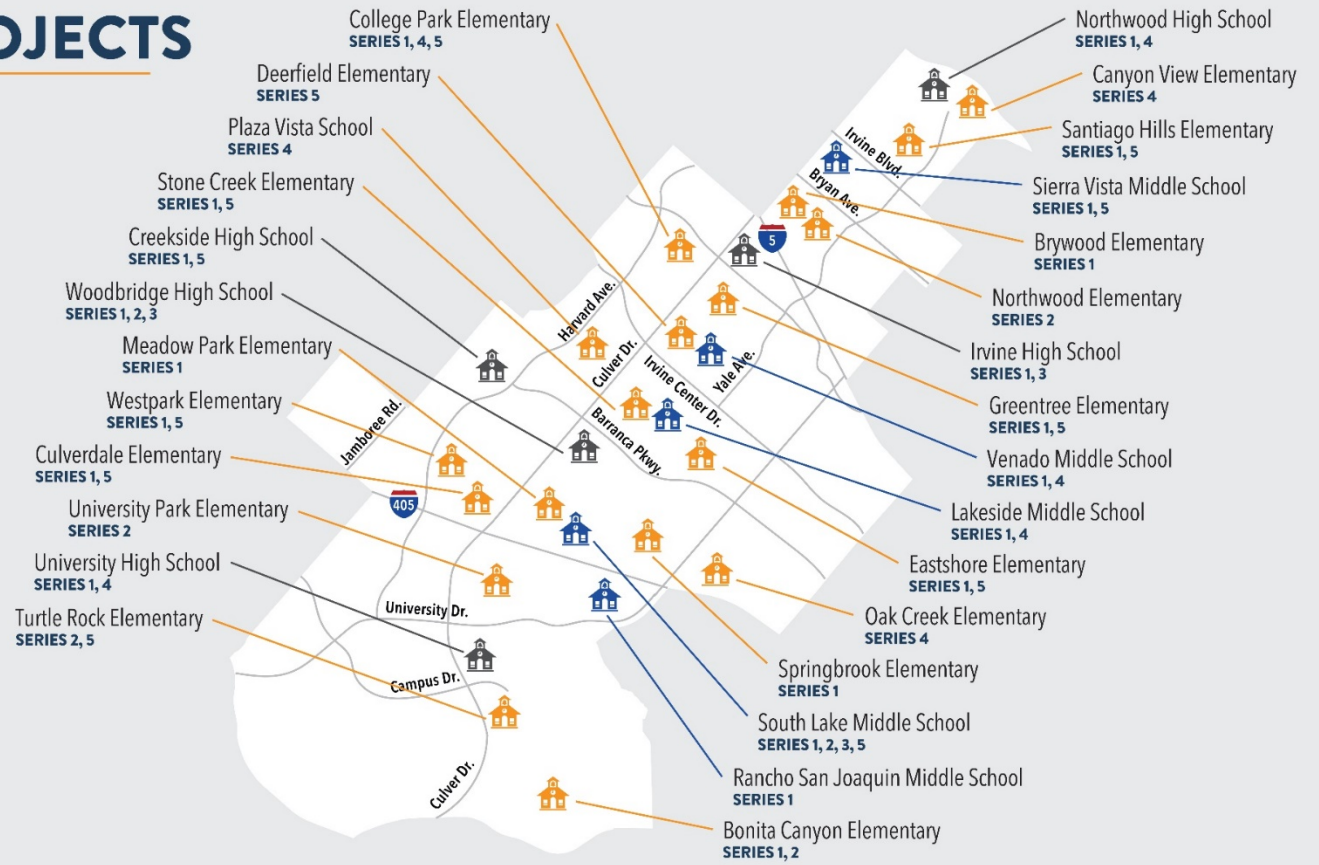
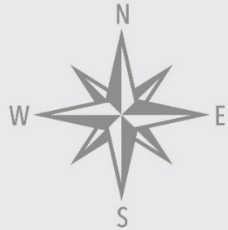


# MEASURE E PROJECTS

 - High Schools

 - Middle Schools

 - Elementary Schools



**SERIES 1**  
**2016**  
21 schools

**SERIES 2**  
**2018**  
6 schools  
(3 repeats)

**SERIES 3**  
**2021**  
1 school  
(1 repeat)

**SERIES 4**  
**2024**  
8 schools  
(5 repeats)

**SERIES 5**  
**2028**  
12 schools  
(11 repeats)

FOR MORE INFORMATION:

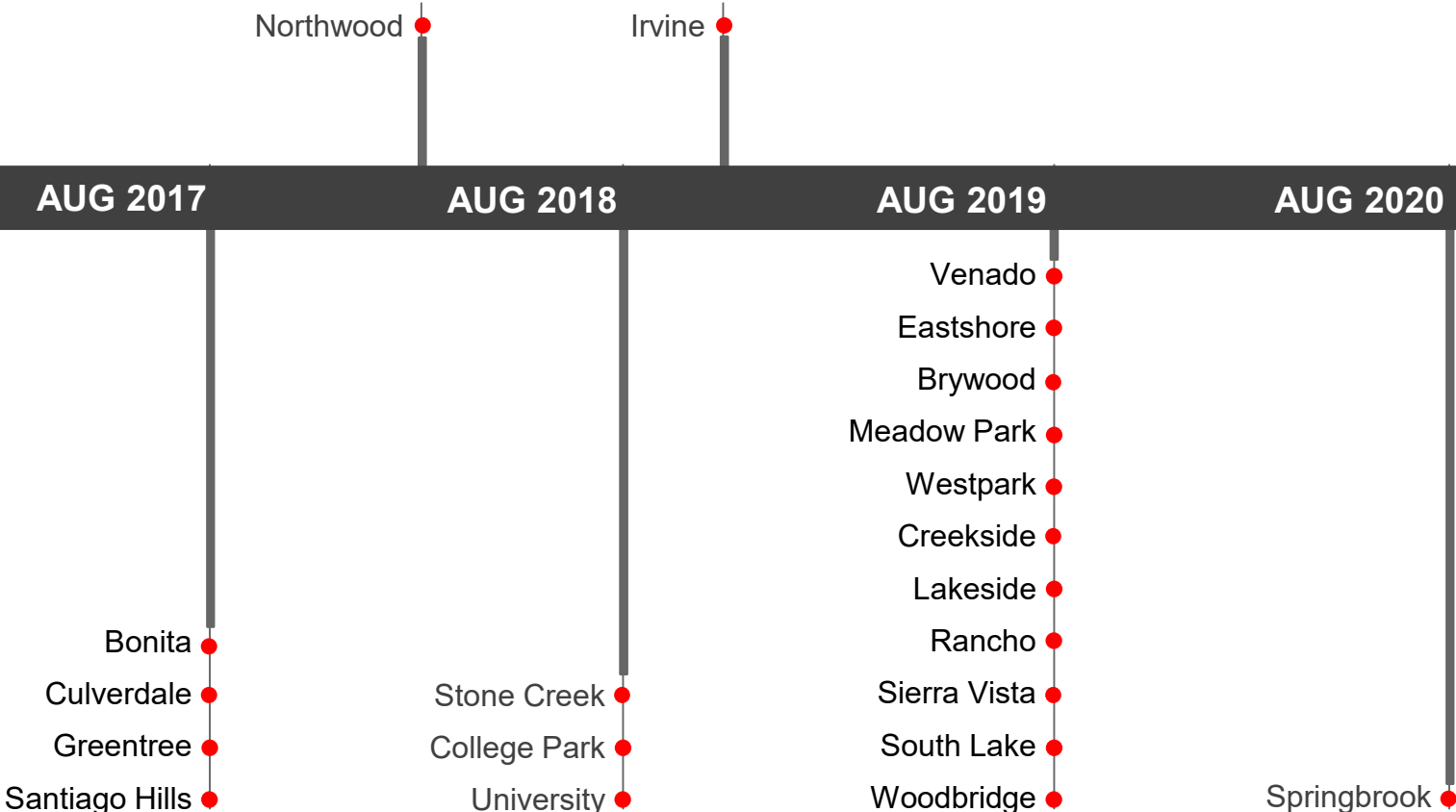


[IUSD.org/MeasureE](https://www.iusd.org/MeasureE)



(949) 936-5000

# PROJECT COMPLETION DATE





# SERIES 1 PRIORITIES

- **Safety and security**
  - Install interior doors at elementary school classrooms
- **Age of the school site**
  - Modernize eligible schools over 25 years old
- **Projects that will impact the greatest amount of students**
  - Projects for high schools and middle schools, which benefit most Irvine USD students, who will attend these schools
- **Upgrade Science Labs at middle schools**



# DESIGN & CONSTRUCTION PROCESS

## ACRONYMS

**RFP**  
Request for Proposal

**A/E**  
Architect / Engineer

**CDE**  
California Department of Education

**DSA**  
Division of State Architect

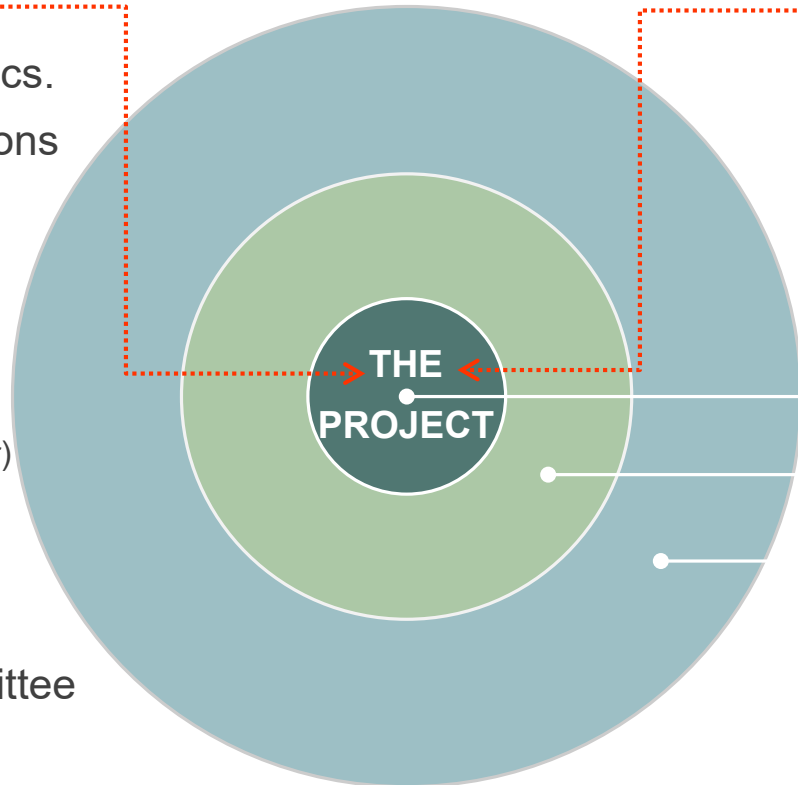
**OPSC**  
Office of Public School Construction



# STAKEHOLDERS

## INTERNAL REVIEWS

- Ed. Specs./Technical Specs.
- Maintenance and Operations
- IT: network, data, AV
- Security
- Ed. Services
- Milestone Meetings (Architect & Construction Manager)
- Schools Facilities Improvement Measure Committee
- Citizens Oversight Committee
- Board of Education Study Sessions



## AGENCY APPROVALS

- California Dept. of Ed.
- Div. of State Architect
- Fire Authority
- State Funding

Planning Committee

Staff Logistics/Impacts

Community Outreach

- Parents /Students
- H.O.A
- Neighbors
- City of Irvine



# Project Overview



# MODERNIZATION SCOPE

## A. CODE REQUIREMENTS

- A01 Accessible parking / passenger loading zone
- A02 Accessible path of travel from public street and within campus
- A03 Door thresholds and hardware
- A04 Accessible signage
- A05 Accessible restroom upgrades
- A06 Accessible drinking fountains and (2) bottle filling stations
- A07 Lift at MPR Stage
- A08 Fire alarm upgrades
- A09 *Revise existing sprinklers*
- A10 Add fire rated walls
- A11 Structural upgrades for reconfigured spaces
- A12 Add restrooms
- A13 Reconfigure old Food Service to Restrooms
- A14 New Fire Hydrant to New Classroom Building

## B. MAINTENANCE ESSENTIAL NEEDS

- B01 Replace/upgrade heating, ventilation, air conditioning, and energy management systems
- B02 Replace roof
- B03 *Replace skylights*
- B04 Replace deteriorated exterior siding
- B05 Portable upgrades, as required

## C. MODERNIZATION BASIC NEEDS

- C01 Upgrade public address system
- C02 Replace floor finishes
- C03 Paint interiors and graphics
- C04 Upgrade plumbing fixtures in select locations (low flow toilets, faucets)
- C05 *Main electrical service/panel upgrades*
- C06 Maintain existing security system
- C07 Replace select doors (interior/exterior)
- C08 Replace water heaters, seismic strapping



# EDUCATIONAL SPECIFICATIONS GUIDELINE SCOPE

## D. ED. SPEC. GUIDELINE - CLASSROOMS

- D01 Enclose Classrooms, new interior doors
- D02 Upgrade student common areas; sliders, if budget allows into classrooms, technology, presentation surfaces, new flexible furniture, if site choose to use allocated funds, branding/way finding
- D03 Tackable walls
- D04 New audio/visual system and controls
- D05 New phone system (VOIP)
- D06 Refurbish existing casework
- D07 Replace floor finishes
- D08 New whiteboards
- D09 New LED lighting and ceilings
- D10 Furniture allocation, areas to be determined by site
- D11 Add (3) additional flexible classrooms

## E. ED. SPEC. GUIDELINE - CORE SPACES

- E01 Renovate/expand food service to approx. 600-700 Square Feet, new equipment
- E02 Create new Innovation Lab
- E03 Create Design Lab (Science)
- E04 Modernize Library
- E05 Modernize MPR: finishes, lighting, sound systems
- E06 Create Student Support Services/Learning Center
- E07 Modernize Administration Minimal
- E08 Furniture allocation, areas to be determined by site

## F. OUTDOOR IMPROVEMENTS

- F01 Exterior wireless access points
- F02 Add shade and seating areas
- F03 Other Outdoor Improvements



# SITE PLAN





# INNOVATION LAB





# COMMONS



# LIBRARY





# TYPICAL CLASSROOM

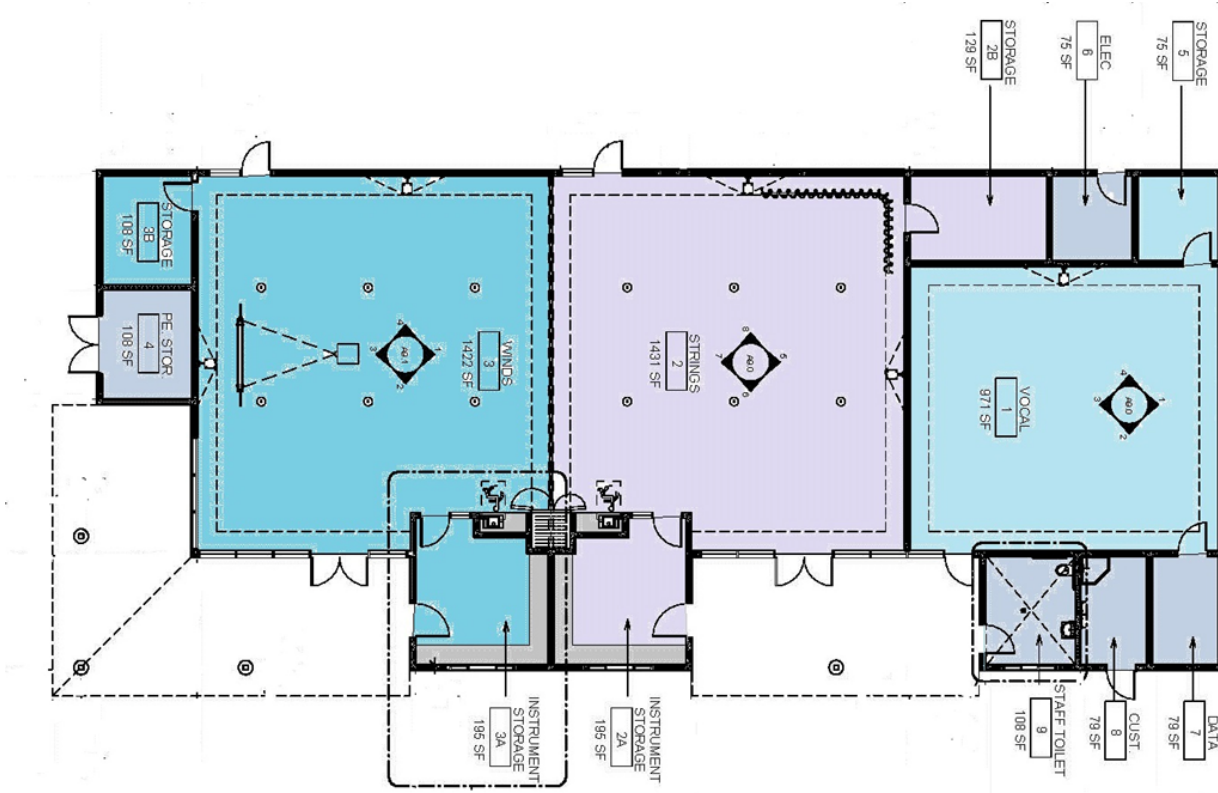


# MUSIC BUILDING

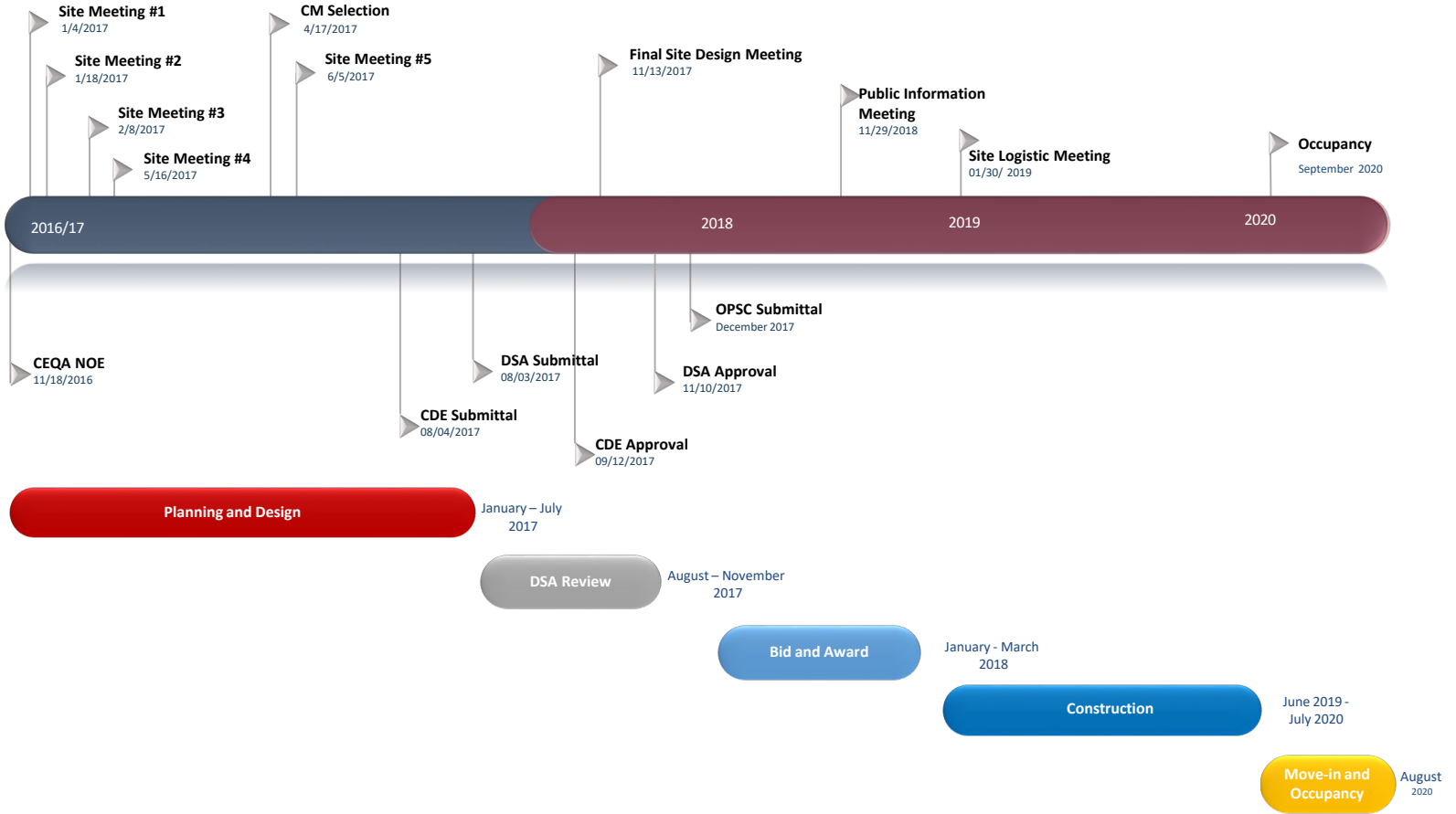




# MUSIC BUILDING FLOOR PLAN



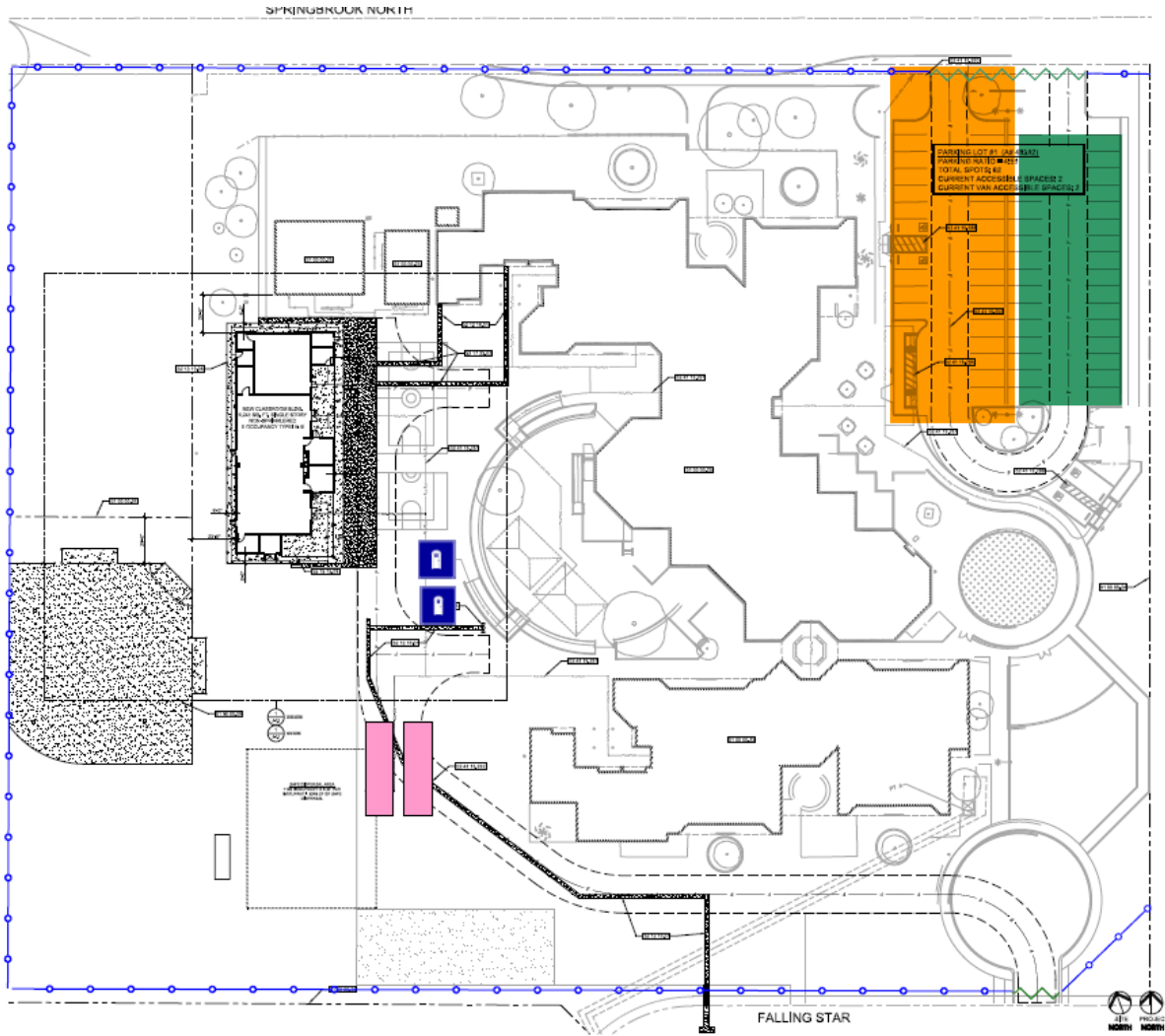
# PROJECT SCHEDULE



# SITE LOGISTIC / PHASING PLAN

**LEGEND**

- CWD & AOR/IOR TRAILERS
- JOBSITE PARKING
- 8FT HIGH CHAIN LINK FENCE
- JOBSITE ENTRY / EXIT
- MUD SHAKER RUMBLE PLATES
- TRADE STORAGE CONTAINER AREA
- MATERIAL LAYDOWN AREA
- OCHA FIRE LANE
- TRASH DUMPSTERS
- PORTA POTTIES



# MEASURE E RESOURCES

- Measure E Webpage  
[iusd.org/MeasureE](https://iusd.org/MeasureE)
- Springbrook Measure E Webpage – school site updates  
[iusd.org/MeasureEsp](https://iusd.org/MeasureEsp)
- Citizens Oversight Committee Webpage  
[iusd.org/COC](https://iusd.org/COC)
- Contact Email for Questions/Concerns  
[MeasureE@iusd.org](mailto:MeasureE@iusd.org)







# *QUESTIONS and ANSWERS*