

TRANSLUCENT PANEL REPLACEMENT

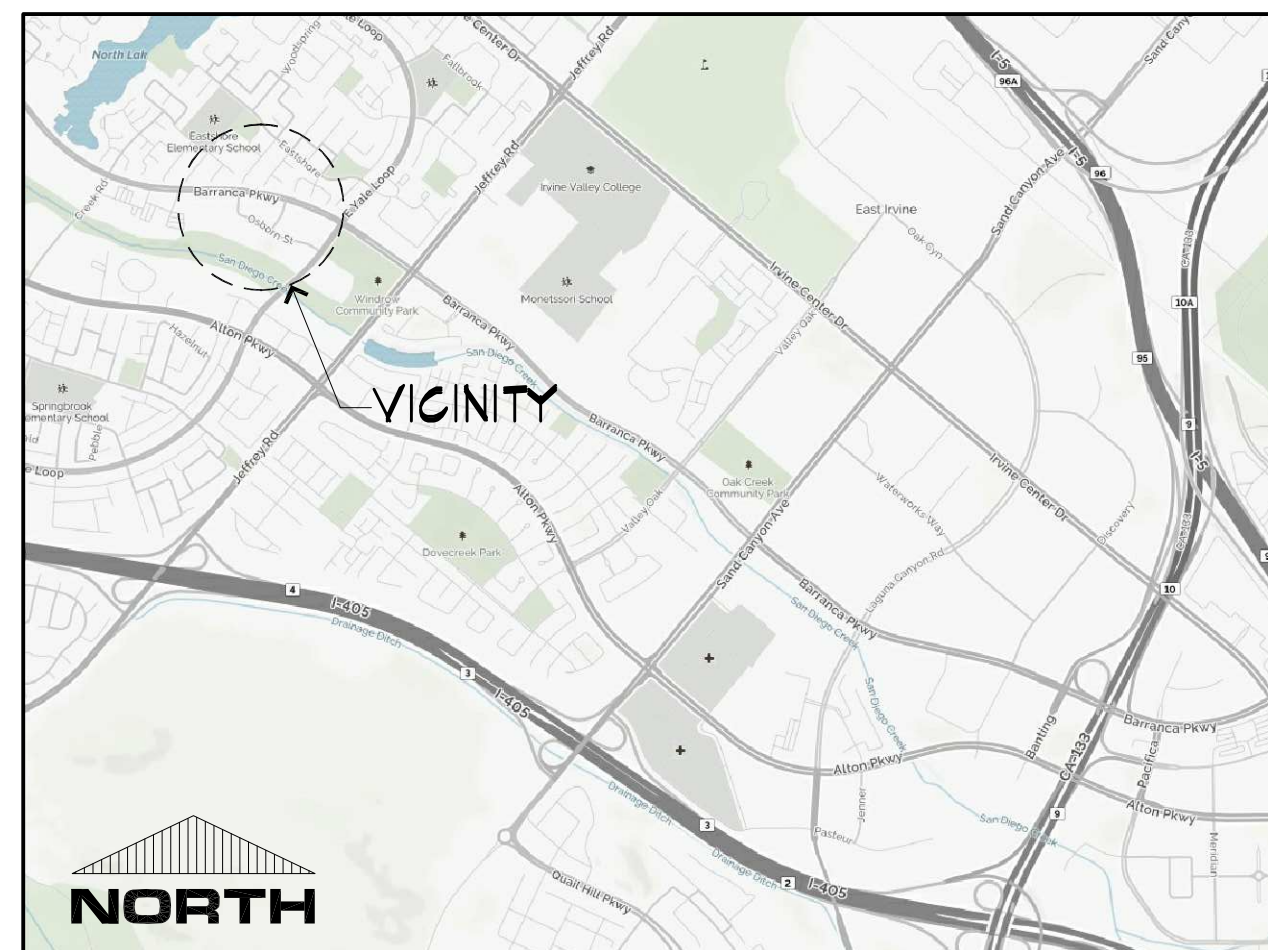
DISTRICT ADMINISTRATION OFFICE

IRVINE UNIFIED SCHOOL DISTRICT

AB	ANCHOR BOLT	MACH	MACHINE
ABS	ABSOLUTE	MAX	MAXIMUM
AC	ASPHALTIC CONCRETE	MCB	METAL CORNER BEAD
ACG	ACCESSIBLE	MCHG	MECHANICAL
ACP	ACOUSTIC PANEL	MFR	MANUFACTURER
ACT	ACOUSTIC TILE	MH	MANHOLE
ATF	ABOVE FINISHED FLOOR	MIN	MINIMUM
ALUM	ALUMINUM	MISC	MISCELLANEOUS
AN	ANGORIZED	MO	MASONRY OPENING
ANP	ACOUSTIC WALL PANEL	MTL	METAL
BD	BOARD	MBS	MEMBERS
BLDG	BUILDING	NIC	NOT IN CONTRACT
BLKG	BLOCKING	NTS	NOT TO SCALE
BM	BENCH MARK	OH	OPPOSITE HAND
BUR	BUILT-UP ROOFING	ON	ON CENTER
CAB	CABINET	OD	OUTSIDE DIAMETER
CJ	CAST IRON	OFI	OWNER FURNISHED/
CL	CONSTRUCTION/COLD JOINT	OFI	CONTRACTOR INSTALLED
CLR	CENTERLINE	O	OVER
CMU	CONCRETE MASONRY UNIT	OH	OPPOSITE HAND
COL	COLUMN	P	PAINT
CONC	CONCRETE	PA	PLANTER AREA
CPL	CEMENT PLASTER	PCPL	PORTLAND CEMENT PLASTER
CPT	CARPET	PFH	PREFINISHED
CT	CERAMIC TILE	PH	PANIC HARDWARE
DET	DETAIL	PI	PAINTED INSULATION FACINGS
DF	DRINKING FOUNTAIN	PLAS	PLASTER
DG	DECOMPOSED GRANITE	PLAM	PLASTIC LAMINATE
DIA	DIAMETER	PL	PLATE/PROPERTY LINE
DM	DIMENSION	PLND	PLYWOOD
DN	DOWN	PR	PAIR
DR	DOOR	PSM	PAINTED SHEET METAL
DSD	DIVISION OF STATE ARCHITECT	QT	QUARRY TILE
EA	EACH	R	RADIUS/RISER/REMOVABLE MILLION
EJ	EXPANSION JOINT	RB	RUBBER BASE
ELEC	ELECTRIC	RD	ROOF DRAIN
ELEV	ELEVATION	REF	REFERENCE
ENCL	ENCLOSURE	REIN	REINFORCING
EQ	EQUAL	REIN	REINFORCING
ES	EXPOSED STRUCTURE	REG'D	REQUIRED
ESP	EGG-SHELL PAINT	RM	ROOM
EXP	EXPANSION/EXPOSED	RO	ROUGH OPENING
EXT	EXTERIOR	RSLB	RESILIENT BASE
EXC	ELECTRIC WATER COOLER	REF	REFRIGERATOR
FD	FLOOR DRAIN	SB	SPLASH BLOCK
FE	FIRE EXTINGUISHER CABINET	SC	SCUD CORE
FF	FINISH FLOOR	SCHED	SCHEDULE
FG	FINISH GRADE	SD	STORM DRAIN
FHS	FIRE HOSE CABINET	SGP	SEMI GLOSS PAINT
FL	FLAT HEAD WOOD SCREWS	SHT	SHEET
FIN	FINISH	SHT	SHEATHING
FLR	FLOORLINE	SIM	SIMILAR
FLR	FLOOR	SPEC	SPECIFICATIONS
FOC	FACE OF CONCRETE	SQ	SQUARE
FOF	FACE OF FINISH	SRF	SEAMLESS RESILIENT FLOORING
FOM	FACE OF MASONRY	ST	STAINLESS STEEL
FOS	FACE OF STUD	STC	SOUND TRANSMISSION CLASS
FRA	FIRE RATED ASSEMBLY	STD	STANDARD
FRP	FIBERGLASS REINFORCED PANEL	STL	STEEL
FRT	FIRE RESISTANT TREATED	STN	STAIN
FURN	FURNITURE	STR	STRUCTURAL/STRUCTURE
FW	FACE OF WINDOW	SUSP	SUSPENDED
TD	FACE OF DOOR	TB	TACKBOARD
GA	GAUGE	TC	TOP OF CURB
GALV	GALVANIZED	TER	TERRAZZO
G1	GALVANIZED IRON	TS	TOP OF GRATE
GLLAM	GLUE LAMINATED	TJ	TOOLED JOINT
GFL	GYPSSUM PLASTER	TM	TOP OF MASONRY
GSM	GALVANIZED SHEET METAL	TOP	TOP OF PARAPET
GWB	GYPSSUM WALLBOARD	TOP	TOP OF WALL
GWM	WATER RESISTANT GWB	TOSHT	TOP OF SHEATHING
HB	HOSE BIBB	TOS	TOP OF STEEL
HDP	HARDWARE	TYP	TYPICAL
HWD	HARDWOOD	TY	TEMPERED GLASS
HC	HOLLOW CORE	UC	UNDER CUT
HM	HOLLOW METAL	UNO	UNLESS NOTED OTHERWISE
HORIZ	HORIZONTAL	VAR	VARIABLE
HR	HOUR	VERT	VERTICAL
INSUL	INSULATION	YCT	VINYL COMPOSITION TILE
INT	INTERIOR	VT	VINYL TILE
INV	INVERT	VSE	VINYL SHEET FLOORING
JT	JOINT	VVC	VINYL WALL COVERING
JST	JOIST	W	WITH
KCPL	KEENES CEMENT PLASTER	WC	WATERCLOSET
LAB	LABORATORY	WD	WOOD
LAV	LAVATORY	WGL	WIREGLASS
LMB	LAMINATED MARKER BOARD	WH	WATER HEATER
LP	LAMINATED PLASTIC	WV	WOOD VENEER
		WVF	WELDED WIRE FABRIC
		X	FACTORY FINISHED PREFINISHED

- CONTRACTOR TO VERIFY ALL DIMENSIONS AND LOCATIONS OF EXISTING CONDITIONS ON THE JOB SITE PRIOR TO THE START OF THIS CONTRACT. NOTIFY THE ARCHITECT IMMEDIATELY OF ANY DISCREPANCIES BETWEEN ACTUAL FIELD CONDITIONS AND INFORMATION SHOWN ON THE CONSTRUCTION DOCUMENTS. EXISTING CONDITIONS ARE INDICATED BASED ON INFORMATION SHOWN ON AVAILABLE DOCUMENTS. ANY DAMAGE TO EXISTING CONDITIONS IS THE SOLE RESPONSIBILITY OF THE APPLICABLE CATEGORY CONTRACTOR.
- THE EXISTENCE OR LOCATION OF ANY UNDERGROUND UTILITIES, PIPES, AND/OR STRUCTURE SHOWN ON THESE PLANS WERE OBTAINED BY A SEARCH OF AVAILABLE RECORDS. TO THE BEST OF OUR KNOWLEDGE, EXISTING UTILITIES ARE AS SHOWN ON THESE PLANS. THE APPLICABLE CATEGORY CONTRACTOR SHALL ASCERTAIN THE TRUE VERTICAL AND HORIZONTAL LOCATION AND SIZE OF ALL UNDERGROUND UTILITIES AND SHALL BE RESPONSIBLE FOR ANY DAMAGE TO PUBLIC OR PRIVATE UTILITIES, SHOWN OR NOT SHOWN HEREIN.
- CONTRACTOR SHALL NOTIFY THE ARCHITECT IMMEDIATELY OF ANY DISCREPANCIES, ERRORS, OMISSIONS, OR INCONSISTENCIES IN THE CONTRACT DOCUMENTS. THE APPLICABLE CATEGORY CONTRACTOR SHALL NOT PROCEED WITH THE WORK UNTIL NOTIFICATION HAS BEEN ISSUED BY THE ARCHITECT.
- IN NO CASE SHALL WORKING DIMENSIONS BE SCALED FROM THE PLANS, SECTIONS OR DETAILS ON THE DRAWINGS.
- ALL STANDARDS, MATERIALS AND WORKMANSHIP SHALL COMPLY WITH THE STATE BUILDING CODE AND ALL OTHER GOVERNING CODES, ORDINANCES, REGULATIONS AND LAWS.
- OCCUPATIONAL SAFETY AND HEALTH, THESE DOCUMENTS, AND THE CONSTRUCTION HEREBY CONTEMPLATED SHALL BE GOVERNED AT ALL TIMES BY THE APPLICABLE PROVISIONS OF THE CALIFORNIA OCCUPATIONAL SAFETY AND HEALTH ACT OF 1973, (CAL/OSHA) AND ALL UPDATES SINCE.
- DETAILS MARKED "TYPICAL" SHALL APPLY IN ALL CASES UNLESS SPECIFICALLY INDICATED OTHERWISE.
- NOT ALL ITEMS OF DEMOLITION ARE SHOWN OR INDICATED. THE CONTRACTOR IS RESPONSIBLE FOR VERIFICATION OF EXISTING CONDITIONS AND COMPARISON WITH NEW CONSTRUCTION TO BE EXECUTED UNDER THIS CONTRACT PRIOR TO SUBMISSION OF BID. NO ADDITIONAL COSTS WILL BE APPROVED FOR ITEMS READILY VISIBLE WHICH WERE REQUIRED TO BE REMOVED OR REMORKED TO FACILITATE FINISHED CONDITIONS.
- THE QUALITY OF INTERIOR LIGHT FIXTURES AS SHOWN ON THE ELECTRICAL DRAWINGS SHALL TAKE PRECEDENCE OVER QUANTITIES SHOWN ELSEWHERE IN THE DOCUMENTS.
- ALL WORK SHALL COMPLY WITH TITLE 24, CALIFORNIA CODE OF REGULATIONS, (CCR)
- WHERE CONFLICTS EXIST IN THE DRAWINGS PERTAINING TO QUANTITIES OF EQUIPMENT OR DEVICES SHOWN, THE LARGER QUANTITY SHALL GOVERN.
- ALL WORK SHALL COMPLY WITH TITLE 24, CALIFORNIA CODE OF REGULATIONS, (CCR)
- FIRE SAFETY DURING DEMOLITION AND CONSTRUCTION SHALL COMPLY WITH CFC 2016, CHAPTER 33
- THIS COVER SHEET CONTAINS A LIST OF DRAWINGS WHICH COMPRISE A FULL SET OF DRAWINGS FOR THIS PROJECT. THIS FULL DRAWING SET ALONG WITH THE SPECIFICATIONS COMPRISE A SINGLE BIDDING PACKAGE THAT IS NEVER TO BE SPLIT AND BID IN PARTS OR SECTIONS. ANY CONTRACTOR, SUB-CONTRACTOR, VENDOR OR ANY OTHER PERSON PARTICIPATING IN OR BIDDING ON THIS DRAWING SET AND SPECIFICATIONS, IF ANY PERSON, PARTY OR ENTITY ELECTS TO SUBMIT BIDS FOR ANY PORTION, OR ALL OF THIS PROJECT, THAT PERSON, PARTY OR ENTITY SHALL BE RESPONSIBLE FOR ANY AND ALL INFORMATION CONTAINED IN THESE DRAWINGS AND SPECIFICATIONS, BUT NOT LIMITED TO, ANY SUBSEQUENT ADDENDUMS OR CLARIFICATIONS THAT MAY BE ISSUED IN RELATION TO THE RESPECTIVE BIDDERS DISCIPLINE.
- ANY SYMBOL OR LEGEND ITEM SHOWN IN THIS DRAWING SET REPRESENTS A COMPLETE FUNCTIONAL SYSTEM INCLUDING NEEDED HEAD, END, SUPPLY, AND CONNECTIONS TO SHOWN FIXTURES

NOTIFY ARCHITECT OF ALL DISCREPANCIES!
(SEE GENERAL NOTE #9, THIS SHEET)



VICINITY MAP (ORANGE COUNTY, CA)



PROJECT SITE MAP (IRVINE, CA)

STATE OF CALIFORNIA
CITY OF IRVINE
ORANGE COUNTY FIRE AUTHORITY
1 FIRE AUTHORITY
IRVINE CA 92602
Tel: (714) 573-6000

OWNER
IRVINE UNIFIED SCHOOL DISTRICT
2015 Roseville
Irvine, CA 92620
Tel: (949) 436-5000
Contact:
Joe Hoffman

ARCHITECT
RUHNAU RUHNAU CLARKE
3715 Tenth Street
Riverside, CA 92501
Tel: (951) 684-4664
Contact:
Roger Clarke, Principal
Matthew Nicholson, Project Manager

TITLE SHEET

T-1 TITLE SHEET

ARCHITECTURAL

A-11 ENLARGED ROOF PLAN - DEMO, NEW & DETAILS

PROJECT TEAM

PARTIAL LIST OF APPLICABLE CODES AS OF JANUARY 1, 2017

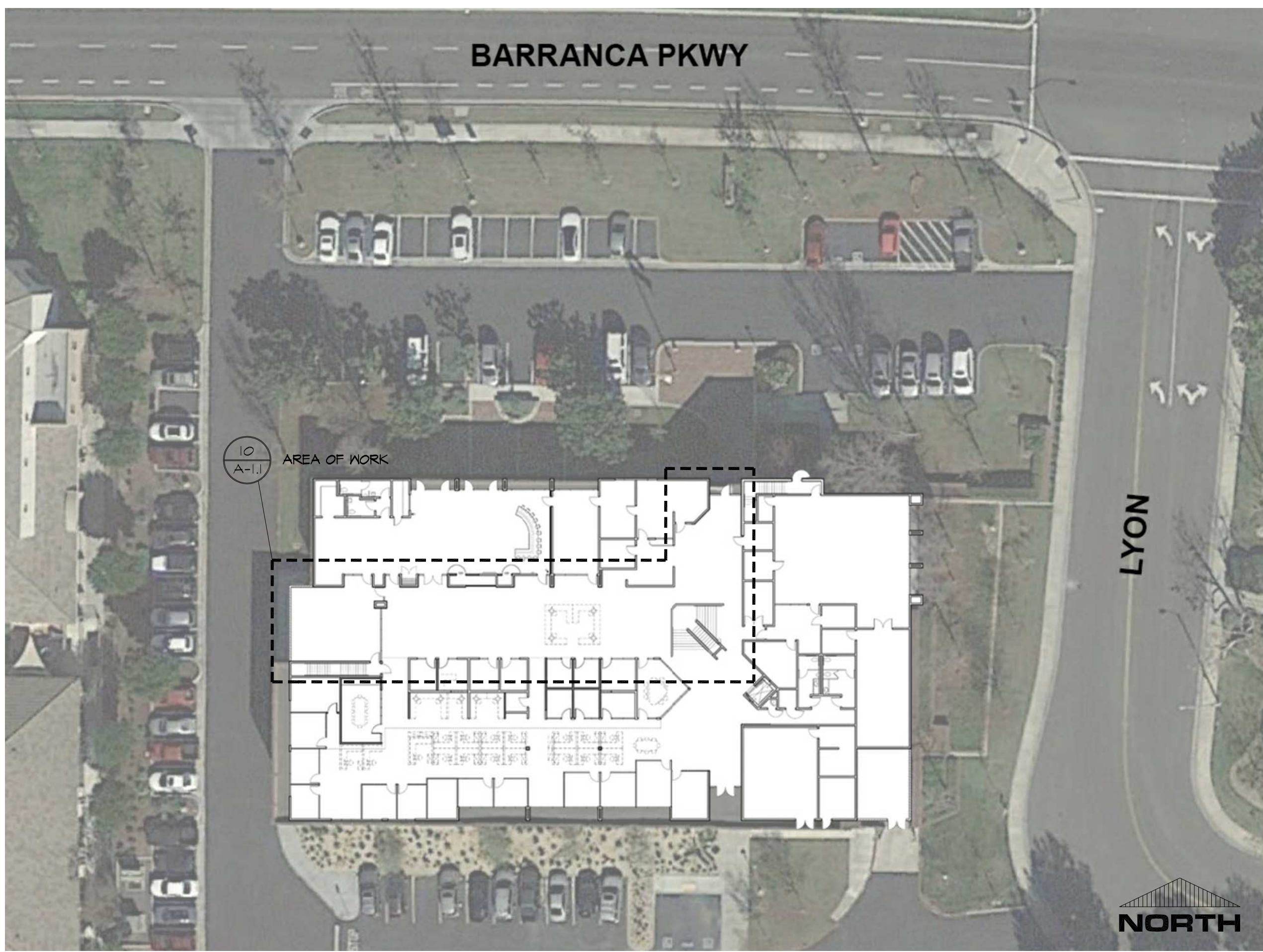
- 2016 BUILDING ADMINISTRATIVE CODE PART 1, TITLE 24 C.C.R.*
- 2016 CALIFORNIA BUILDING CODE (CBC), PART 2, TITLE 24 C.C.R.
- (2015 INTERNATIONAL BUILDING CODE VOLUMES 1-2 AND 2016 CALIFORNIA AMENDMENTS)
- 2016 CALIFORNIA ELECTRICAL CODE (CEC), PART 3, TITLE 24 C.C.R.
- (2014 NATIONAL ELECTRICAL CODE AND 2016 CALIFORNIA AMENDMENTS)
- 2016 CALIFORNIA MECHANICAL CODE (CMC) PART 4, TITLE 24 C.C.R.
- (2015 UNIFORM MECHANICAL CODE AND 2016 CALIFORNIA AMENDMENTS)
- 2016 CALIFORNIA PLUMBING CODE (CPC), PART 5, TITLE 24 C.C.R.
- (2015 UNIFORM PLUMBING CODE AND 2016 CALIFORNIA AMENDMENTS)
- 2016 CALIFORNIA ENERGY CODE, PART 6, TITLE 24 C.C.R.*
- 2016 CALIFORNIA FIRE CODE, PART 7, TITLE 24 C.C.R.
- (2015 INTERNATIONAL FIRE CODE AND 2016 CALIFORNIA AMENDMENTS)
- 2016 CALIFORNIA GREEN BUILDING STANDARDS CODE, PART 11, TITLE 24 C.C.R.
- 2016 CALIFORNIA REFERENCED STANDARDS, PART 12, TITLE 24 C.C.R.
- TITLE 19 C.C.R., PUBLIC SAFETY, STATE FIRE MARSHAL REGULATIONS, 2013 ASME A17.1 SAFETY CODE FOR ELEVATORS AND ESCALATORS

PARTIAL LIST OF APPLICABLE STANDARDS

- NFPA 13 AUTOMATIC SPRINKLER SYSTEMS 2016 EDITION
- NFPA 14 STANDPIPE SYSTEMS AND HOSE SYSTEMS 2013 EDITION
- NFPA 17 DRY CHEMICAL EXTINGUISHING SYSTEMS 2013 EDITION
- NFPA 17A WET CHEMICAL SYSTEMS 2013 EDITION
- NFPA 20 STATIONARY PUMPS 2016 EDITION
- NFPA 22 WATER TANKS FOR PRIVATE FIRE PROTECTION 2013 EDITION
- NFPA 24 PRIVATE FIRE MANS 4 THEIR APPURTENANCES 2016 EDITION
- NFPA 25 STANDARD FOR INSPECTION, TESTING AND MAINTENANCE OF WATER-BASED FIRE PROTECTION SYSTEMS 2013 EDITION
- NFPA 72 NATIONAL FIRE ALARM 1 SIGNALING CODE 2016 EDITION
- NFPA 80 FIRE DOOR AND OTHER OPENING PROTECTIVES 2016 EDITION
- NFPA 92 STANDARD FOR SMOKE CONTROL SYSTEMS 2013 EDITION
- NFPA 255 CRITICAL RADIANT FLUX OF FLOOR COVERINGS SYSTEMS 2013 EDITION
- NFPA 2001 CLEAN AGENT FIRE EXTINGUISHING SYSTEMS 2012 EDITION
- ICC 300 ICG STANDARDS ON BLEACHERS, FOLDING AND TELESCOPING SEATING AND GRAND STANDS 2012 EDITION
- UL 300 FIRE TESTING OF FIRE EXTINGUISHING SYSTEMS OF RESTAURANT AND COOKING AREAS 2005 EDITION
- UL 464 AUDIBLE SIGNAL APPLIANCES 2009 EDITION
- UL 521 HEAT DETECTORS FOR FIRE PROTECTIVE SIGNALING SYSTEMS 1994 EDITION

REFERENCE CODE SECTION FOR NFPA STANDARDS - 2016 CBC (SFM) CHAPTER 35. SEE CHAPTER 35 FOR STATE OF CALIFORNIA AMENDMENTS TO NFPA STANDARDS.

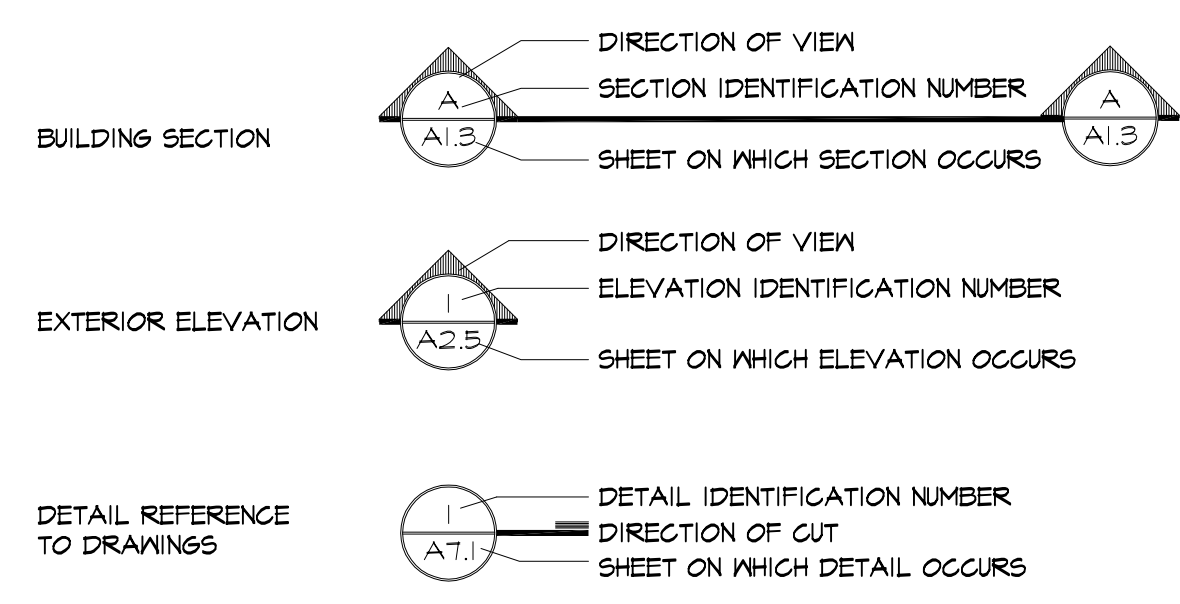
SHEET INDEX



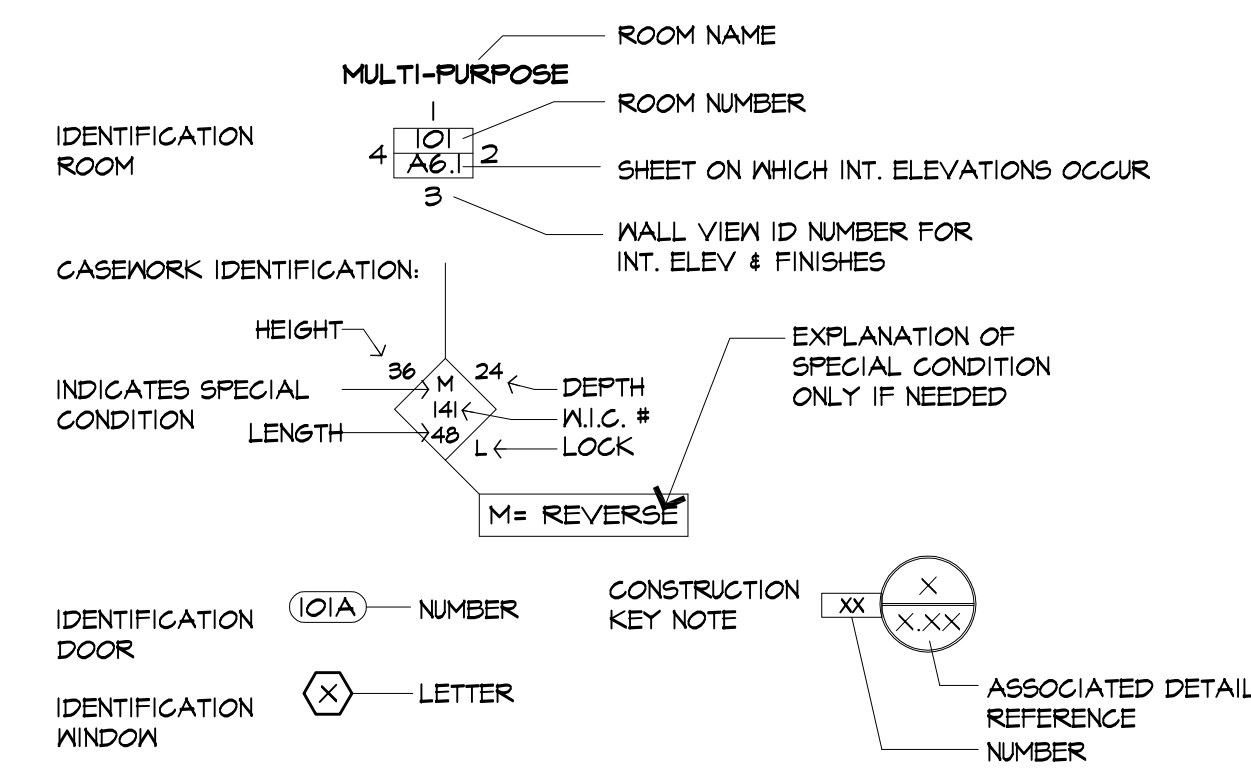
SITE PLAN

SCALE: 1/32" = 1'-0"

ARCHITECTURAL ABBREVIATIONS



GENERAL NOTES



APPLICABLE AGENCIES

- Remove and Replace Existing Translucent Panels
- Remove and Repair Flashing and Roofing

APPLICABLE CODES

SITE PLAN

ARCHITECTURAL SYMBOLS

SCOPE OF WORK

RRC PROJECT No. : 1-34-26

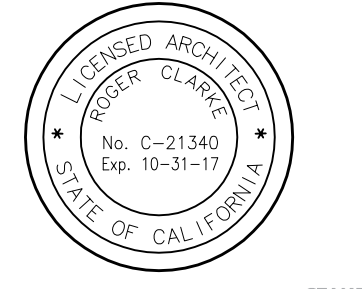
DRAWN BY:	CHECKED BY:	REVISION No.:	DATE:	DESCRIPTION:	
ISSUE No.:	DATE:	DESCRIPTION:	REVISION No.:	DATE:	DESCRIPTION:
ISSUE No.:	DATE:	DESCRIPTION:	REVISION No.:	DATE:	DESCRIPTION:
ISSUE No.:	DATE:	DESCRIPTION:	REVISION No.:	DATE:	DESCRIPTION:

RRCARCH.COM

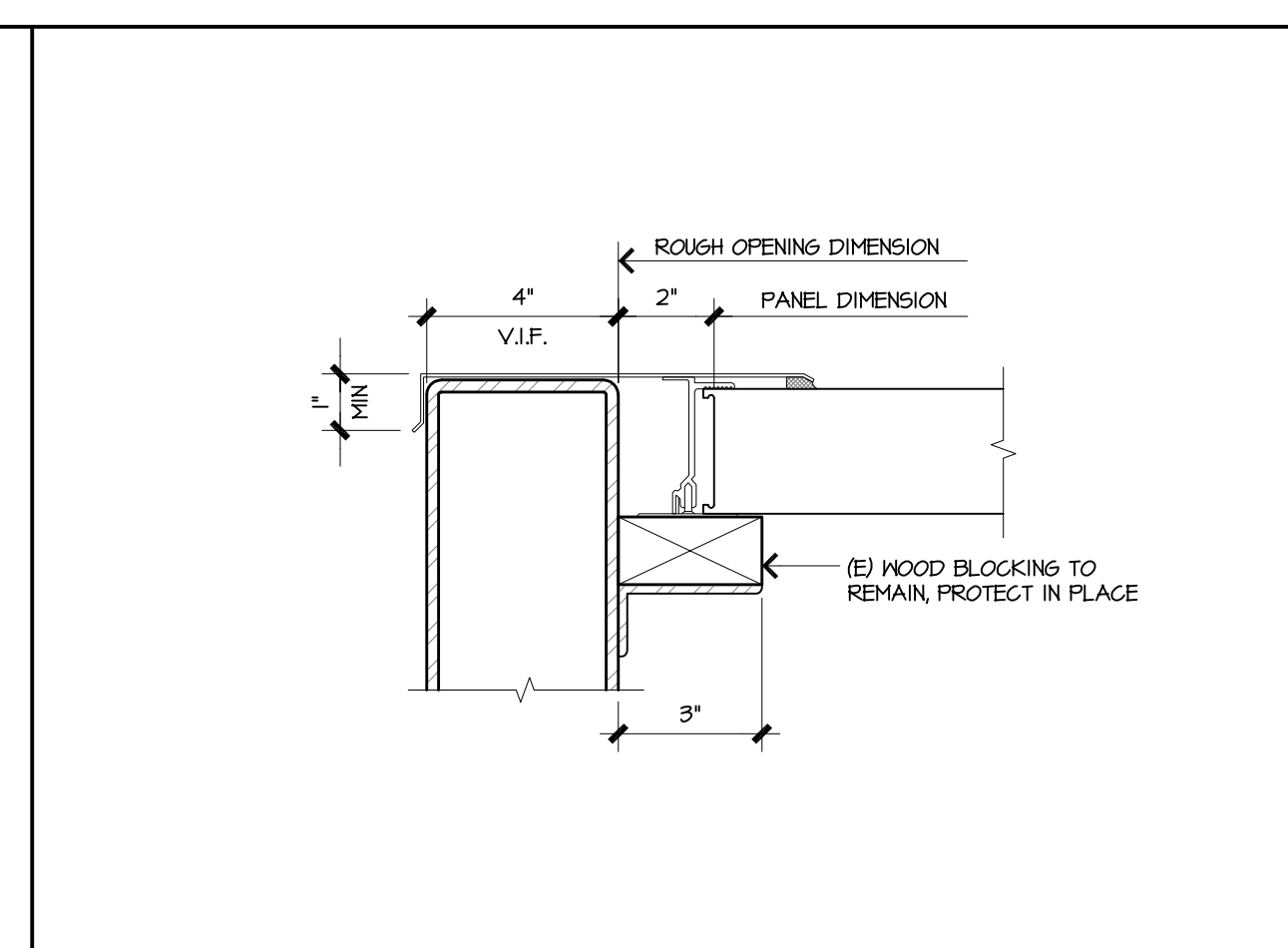
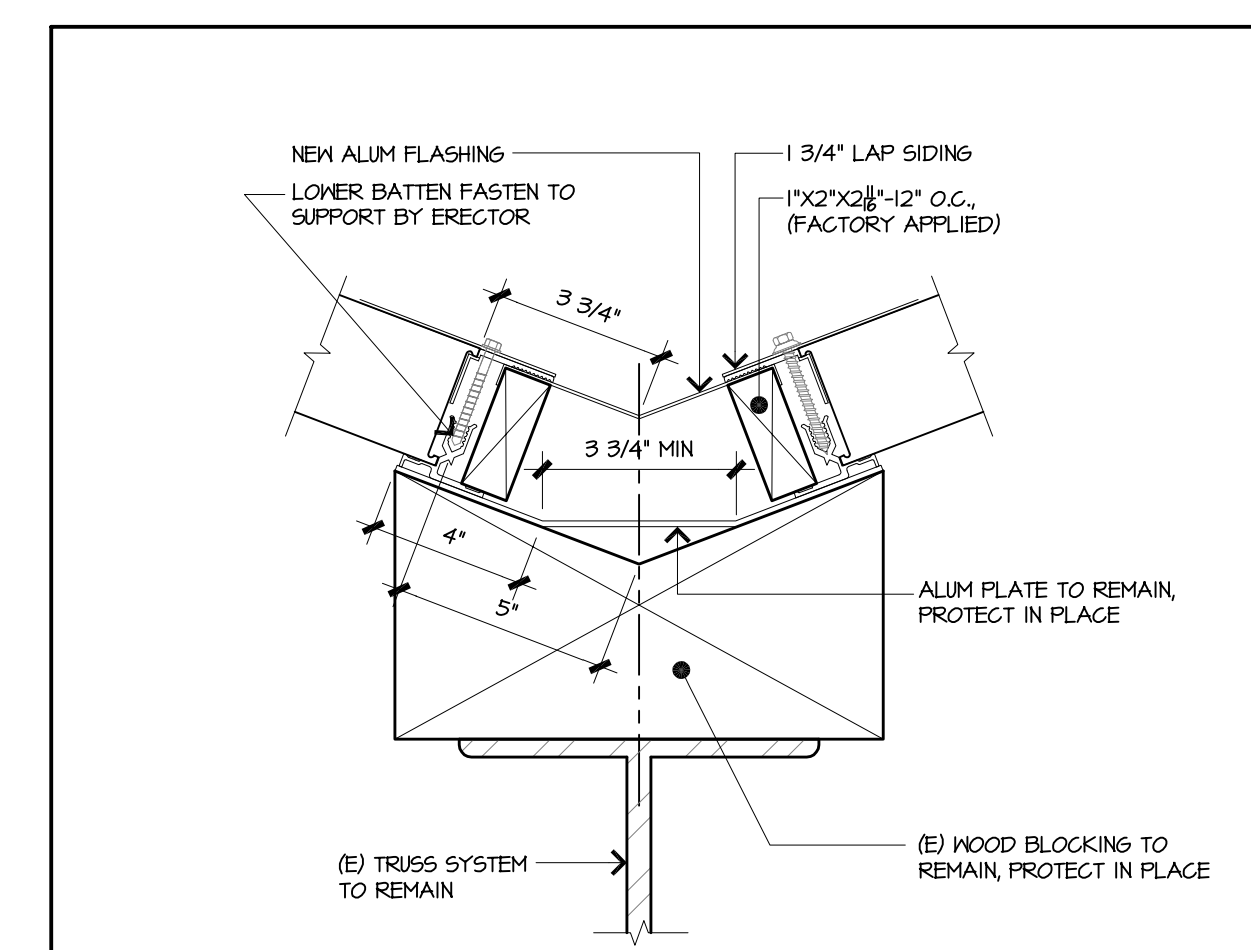
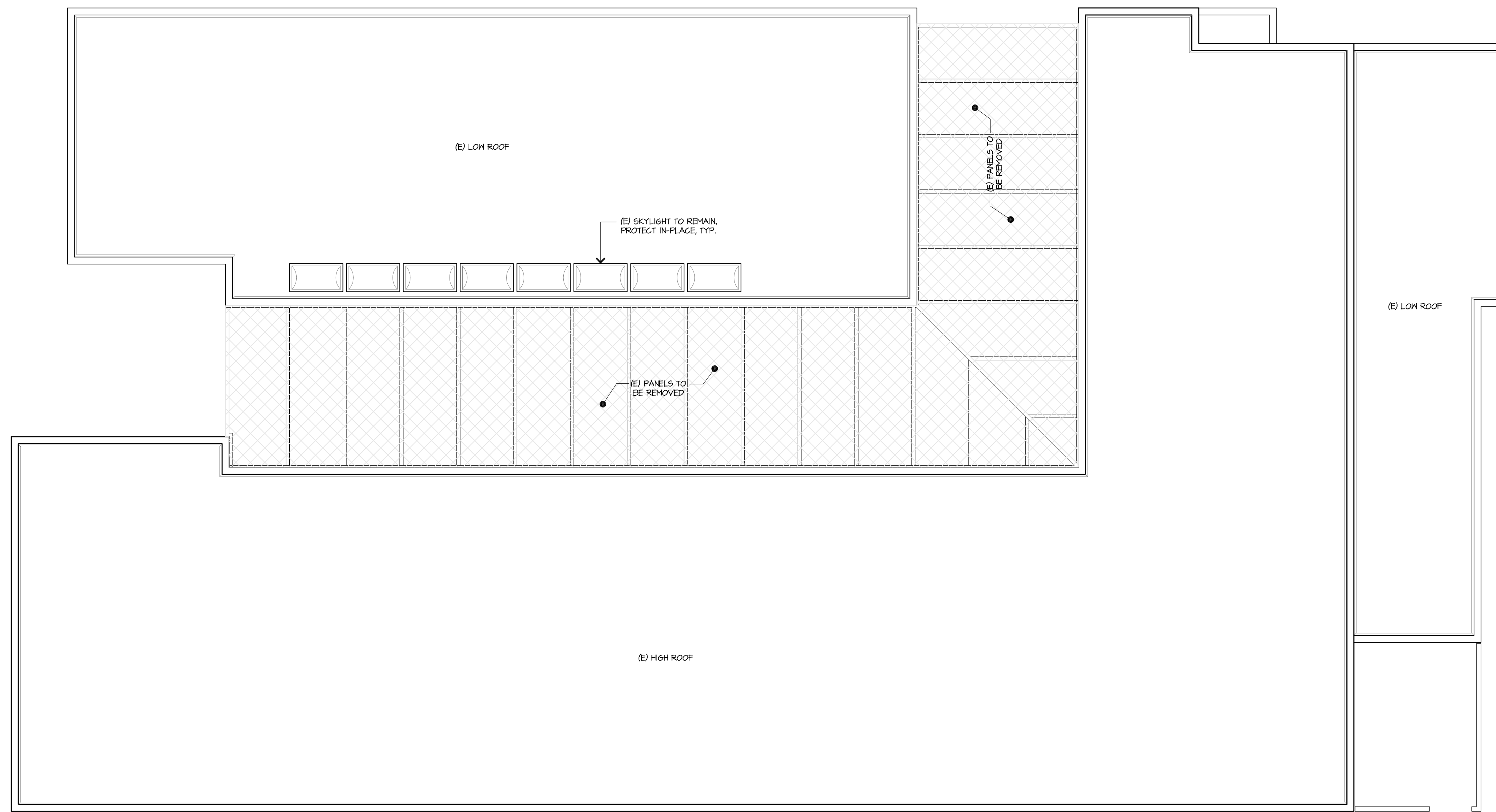
TITLE SHEET

T-1

TRANSLUCENT PANEL REPLACEMENT
District Administration Office
5050 Barranca Parkway, Irvine, CA 92604
Irvine Unified School District

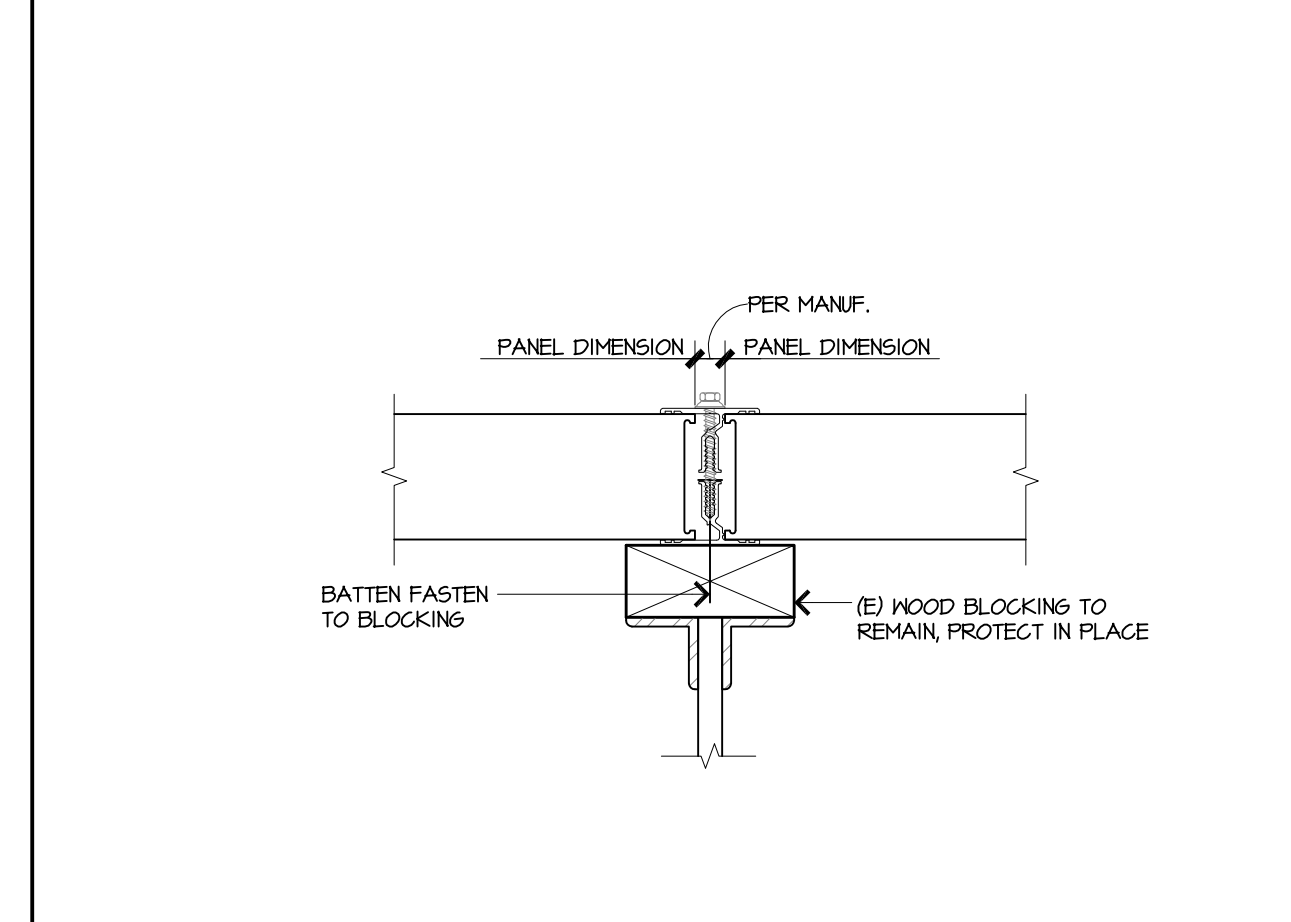
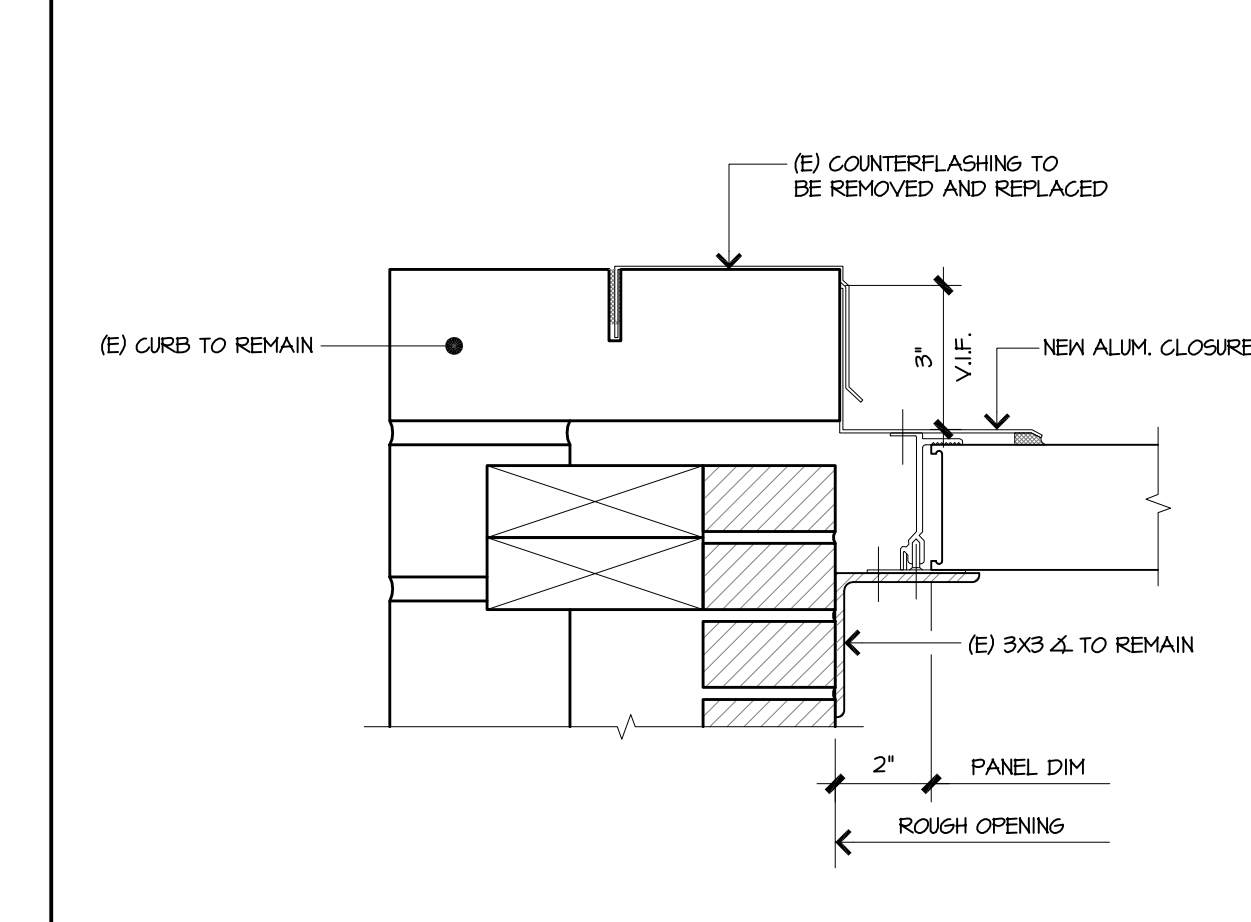


**RUHNAU
RUHNAU
CLARKE**
ARCHITECTS PLANNERS



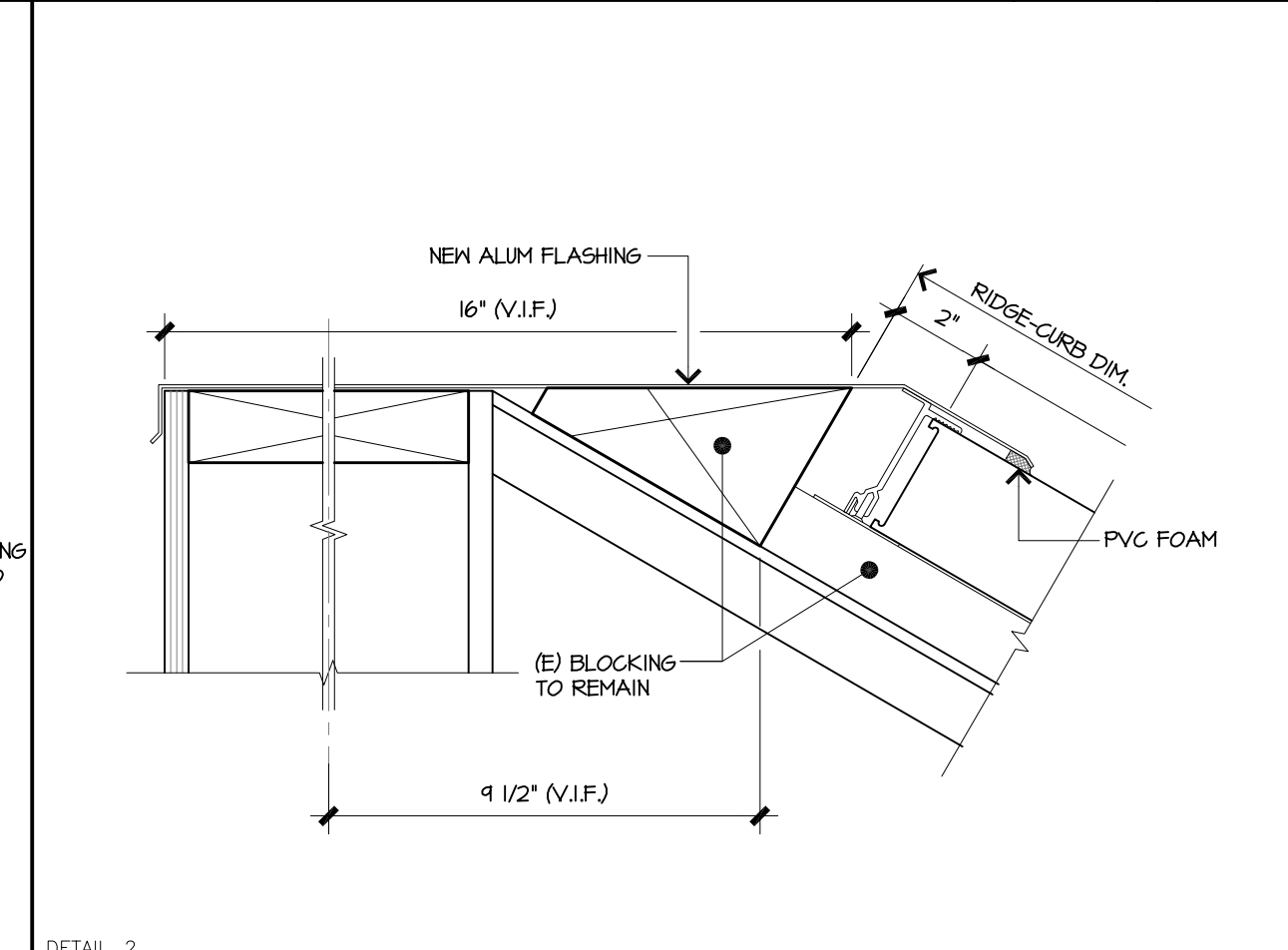
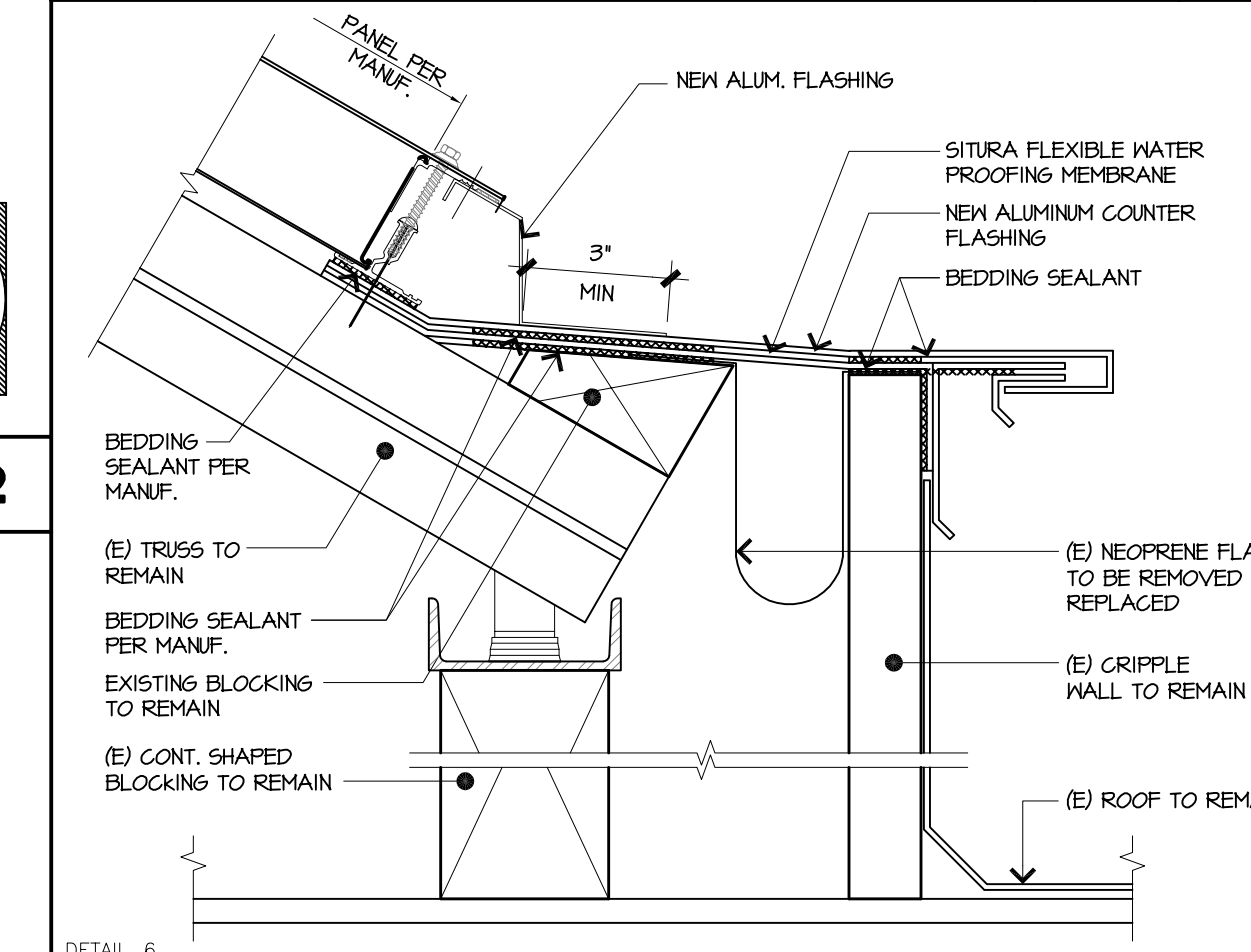
DETAIL_4 VALLEY DETAIL 3'-11'-0" 6

DETAIL_1 EDGE DETAIL 3'-11'-0" 1



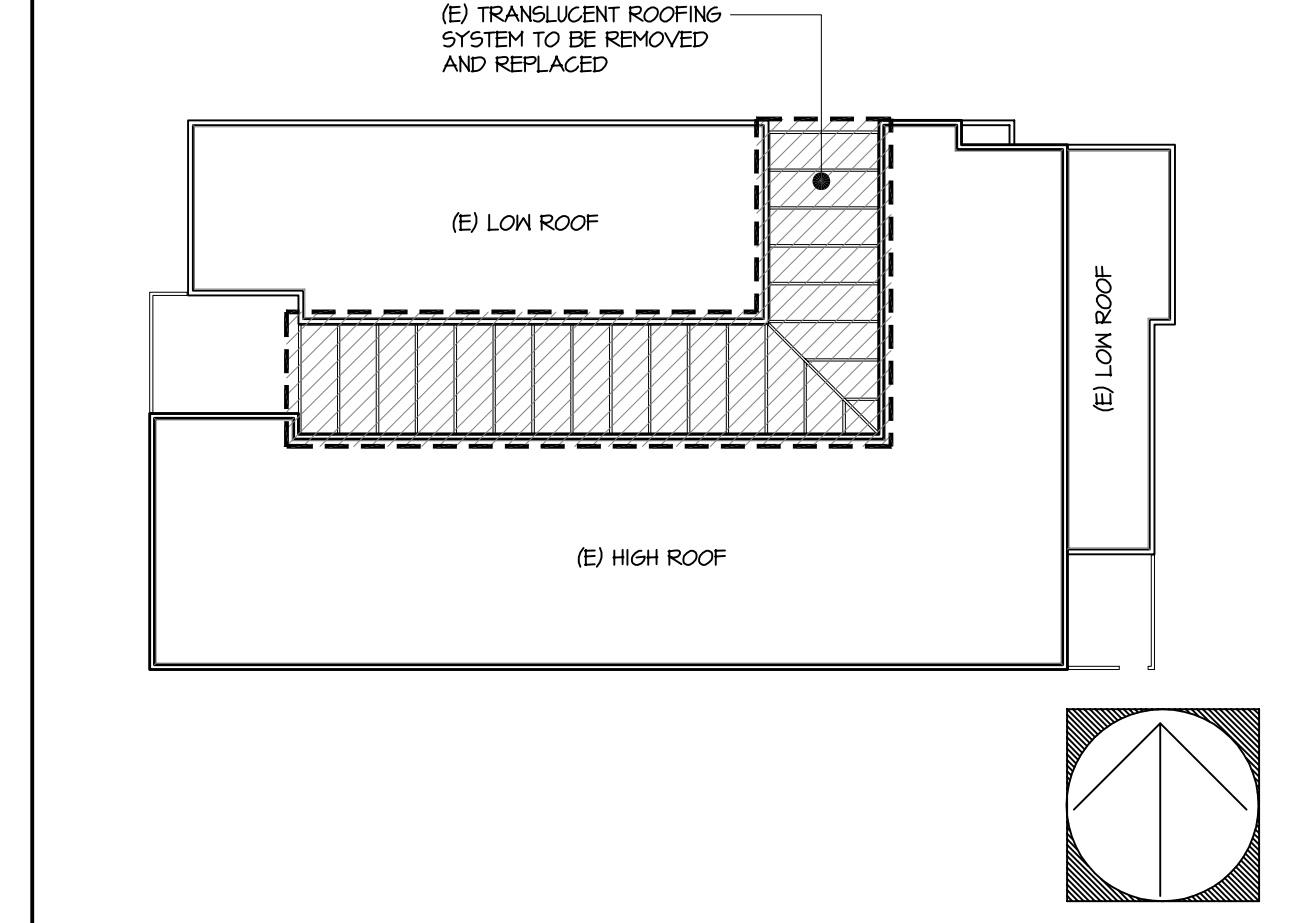
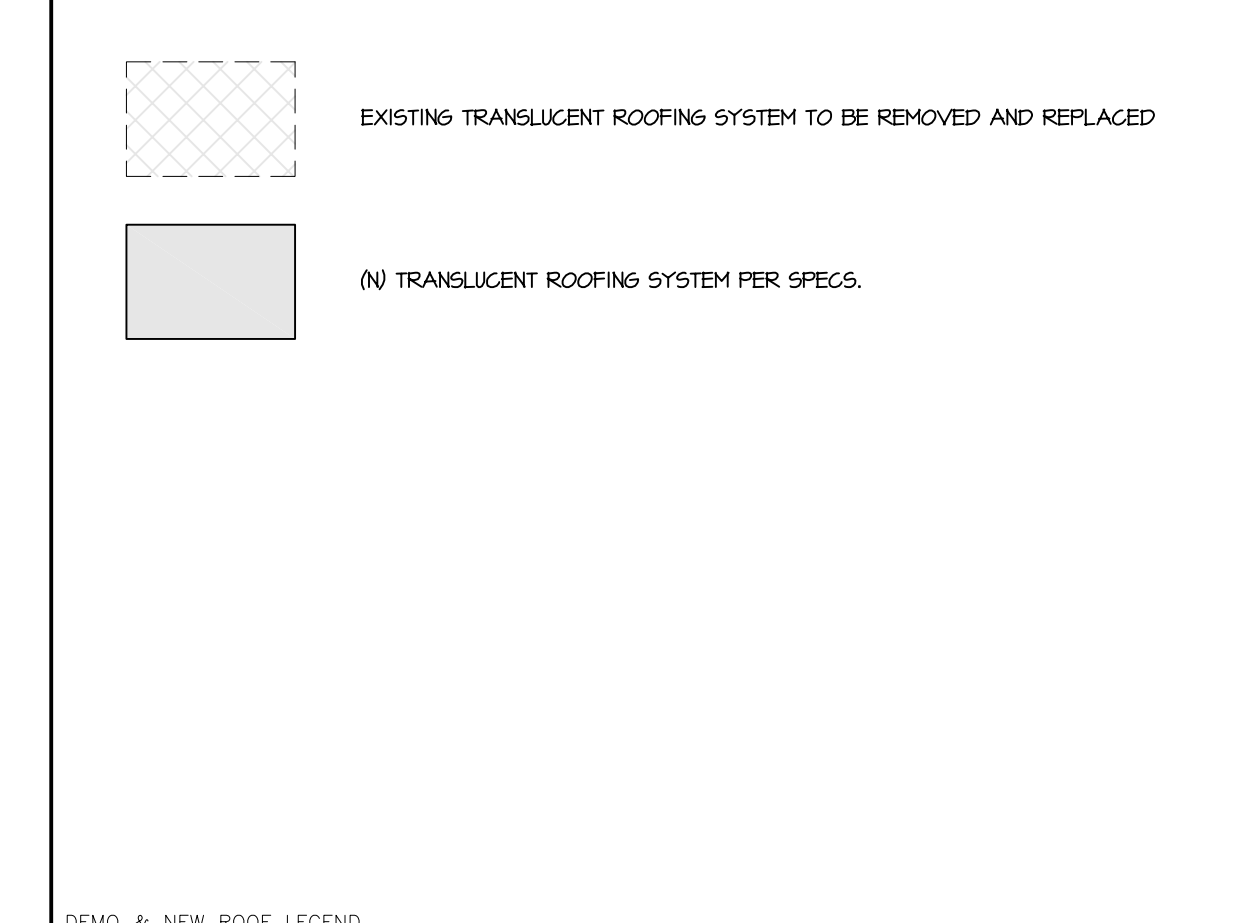
DETAIL_2 EDGE DETAIL 3'-11'-0" 7

DETAIL_2 JOINT DETAIL 3'-11'-0" 2



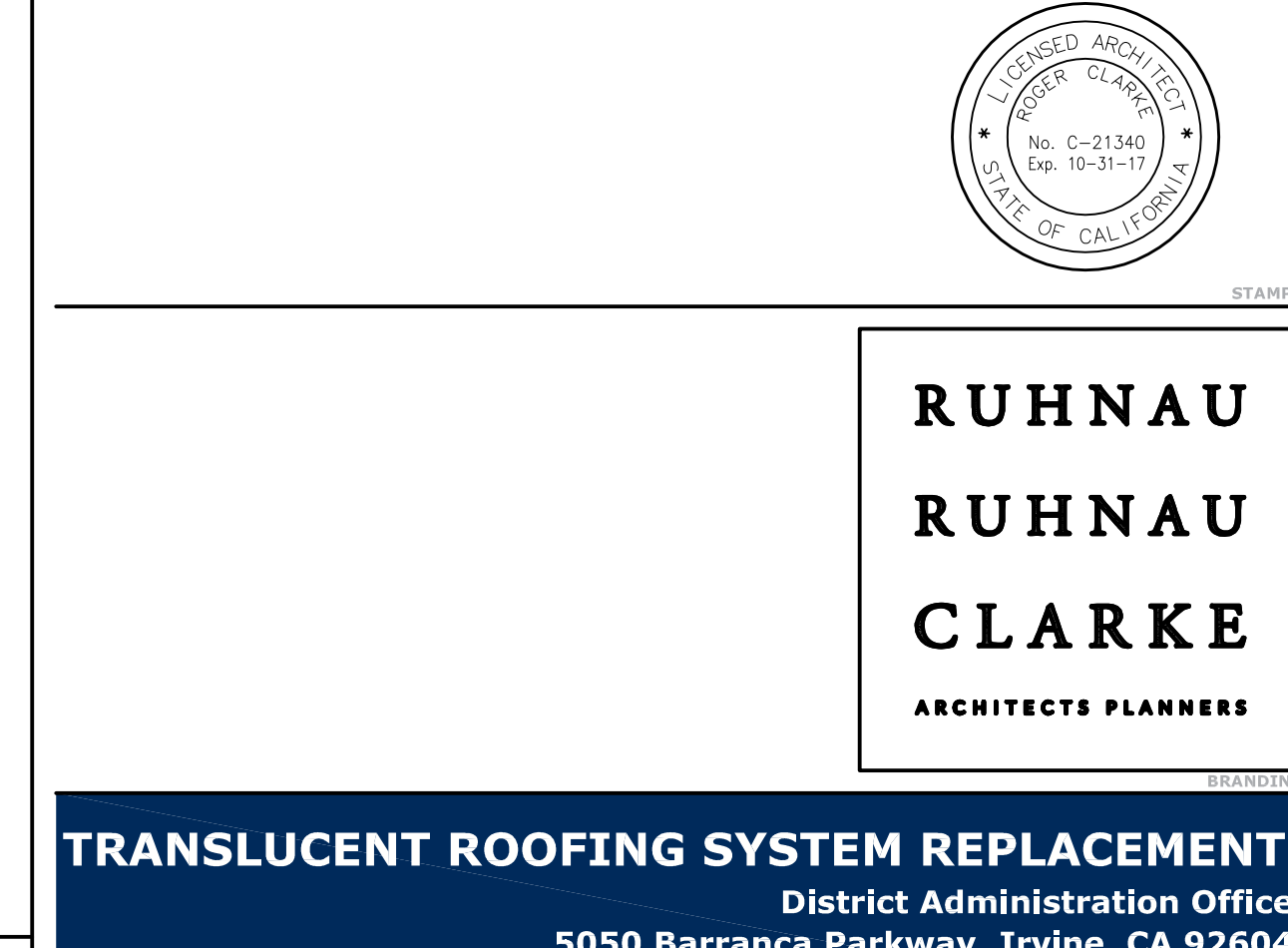
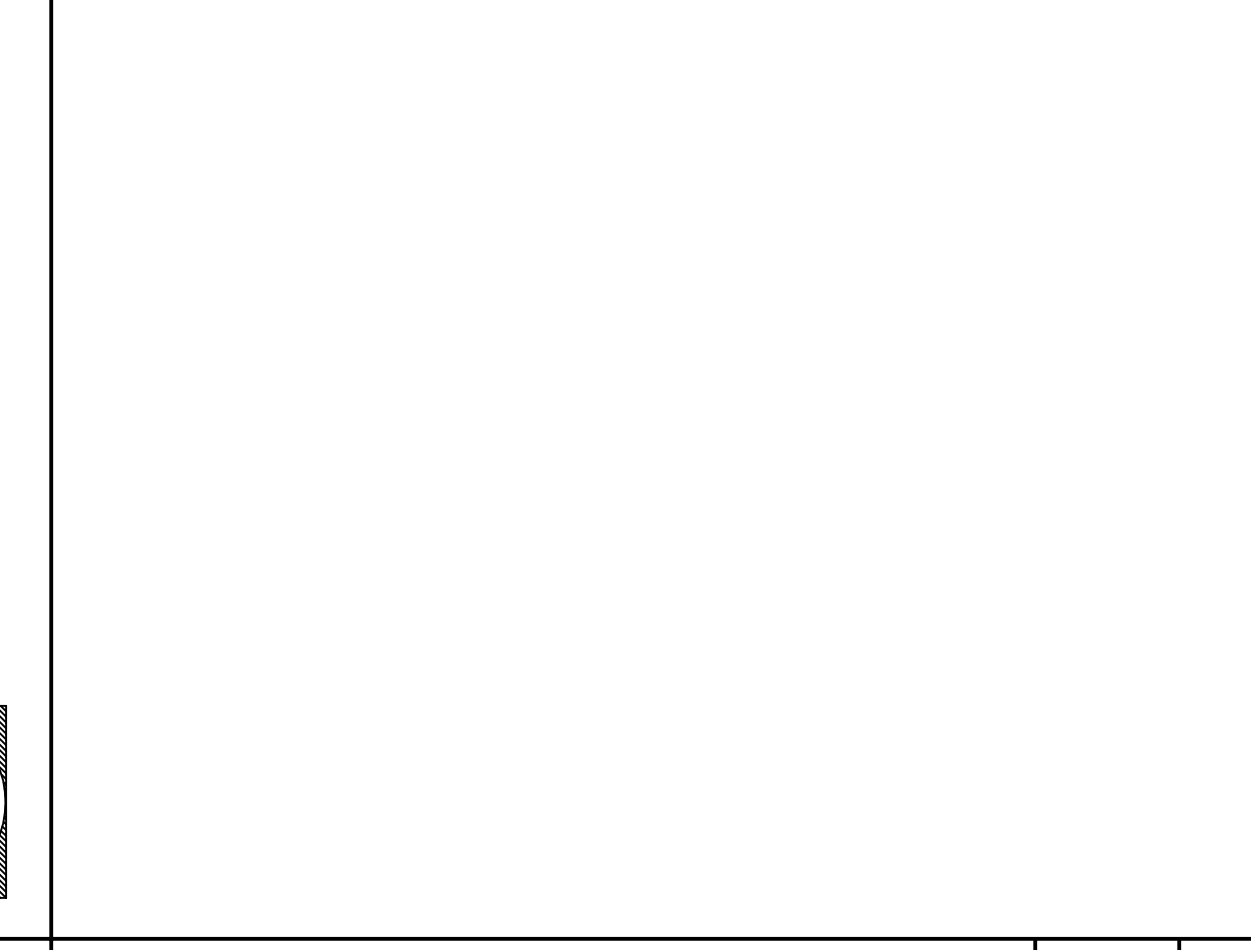
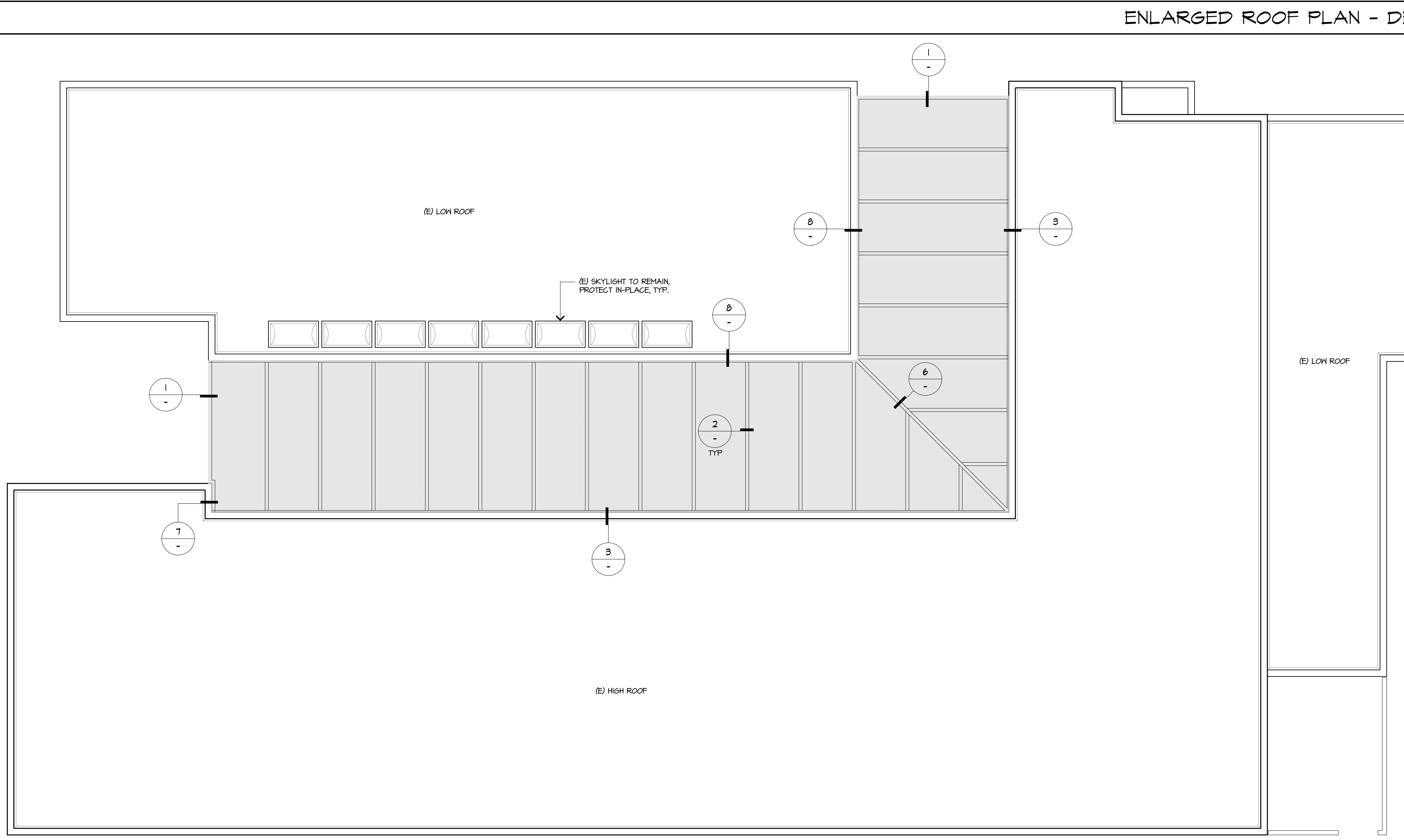
DETAIL_6 SILL DETAIL 3'-11'-0" 8

DETAIL_2 SILL DETAIL 3'-11'-0" 3



DETAIL_6 DEMO & NEW ROOF LEGEND - 9

DETAIL_2 KEY PLAN 1'-4" 4

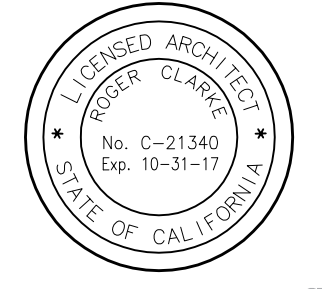


DETAIL_6 DEMO & NEW ROOF LEGEND - 9

DETAIL_2 KEY PLAN 1'-4" 4

ENLARGED ROOF PLAN - NEW 1'-10'-0" 15

TRANSLUCENT ROOFING SYSTEM REPLACEMENT
District Administration Office
5050 Barranca Parkway, Irvine, CA 92604
Irvine Unified School District



**RUHNAU
RUHNAU
CLARKE**
ARCHITECTS PLANNERS

RRCARCH.COM

ROOF PLAN
DEMO & NEW

A-1.1

RRC PROJECT No. : 1-34-26

ISSUE NO.	DATE	DESCRIPTION	REVISION NO.	DATE	DESCRIPTION