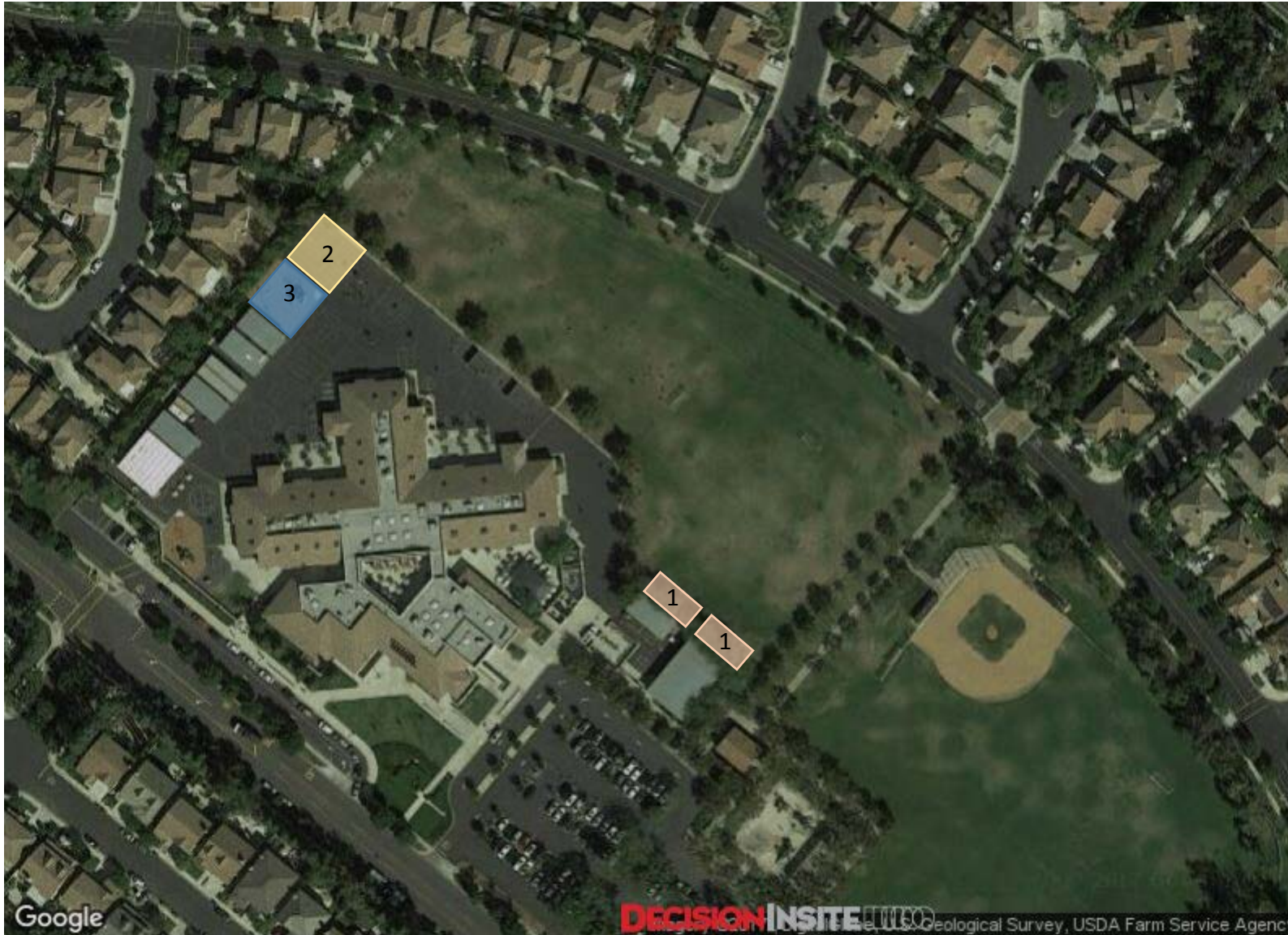


Item No. 25.b. Options for Placement of Two Relocatable Classrooms at Oak Creek Elementary School and Approval of Architectural and Engineering Services



Constructability Priority  
Locations of two (2) 24x40  
Relocatable Classrooms:

#1 – Ease of placement,  
utilities nearby

#2 – Placement on opposite  
side of play structure

#3 – Will require the removal  
and replacement of play  
structure