

Northwood ES Modernization Public Information Meeting

February 25, 2020



MEETING AGENDA

- Introductions
- Overview of Measure E Program
- Project Overview
- Resources
- Questions and Answers



INTRODUCTIONS

- Kelvin Okino– IUSD, Executive Director, Facilities Planning & Construction
- Christa DeBoer – IUSD Supervisor, Facilities/Construction

Additional Team Members:

- Janelle Mazza– IUSD, Principal of Northwood ES
- Annie Brown – IUSD, Public Information Officer
- Joe Kelly – Sprotte Watson Architect



Overview of Measure E Program



HISTORY OF MEASURE E

- **Comprehensive plan created in 2012**
- **Refined in 2015 with current cost estimates**
 - Districtwide improvement needs over **\$800.0** million
 - Districtwide needs include:
 - facilities improvements
 - enrollment growth
 - site upgrades
 - upgrades to non-school site facilities
- **Determined the need for a General Obligation Bond**



SFID BOND MEASURE

- **Schools Facility Improvement District (SFID)**
 - Carved out newer schools under a Mitigation Agreement (Mello-Roos)
 - Focused on 28 schools of the 38 schools
- **June 7, 2016 Ballot**
 - \$319.0 million Bond Measure (Measure E)
 - \$29 / \$100,000 assessed value tax increase
 - Four bond series sales
 - Proposition 39 (School Facilities Local Vote Act of 2000)
 - Passed at 60.2% (55% required)

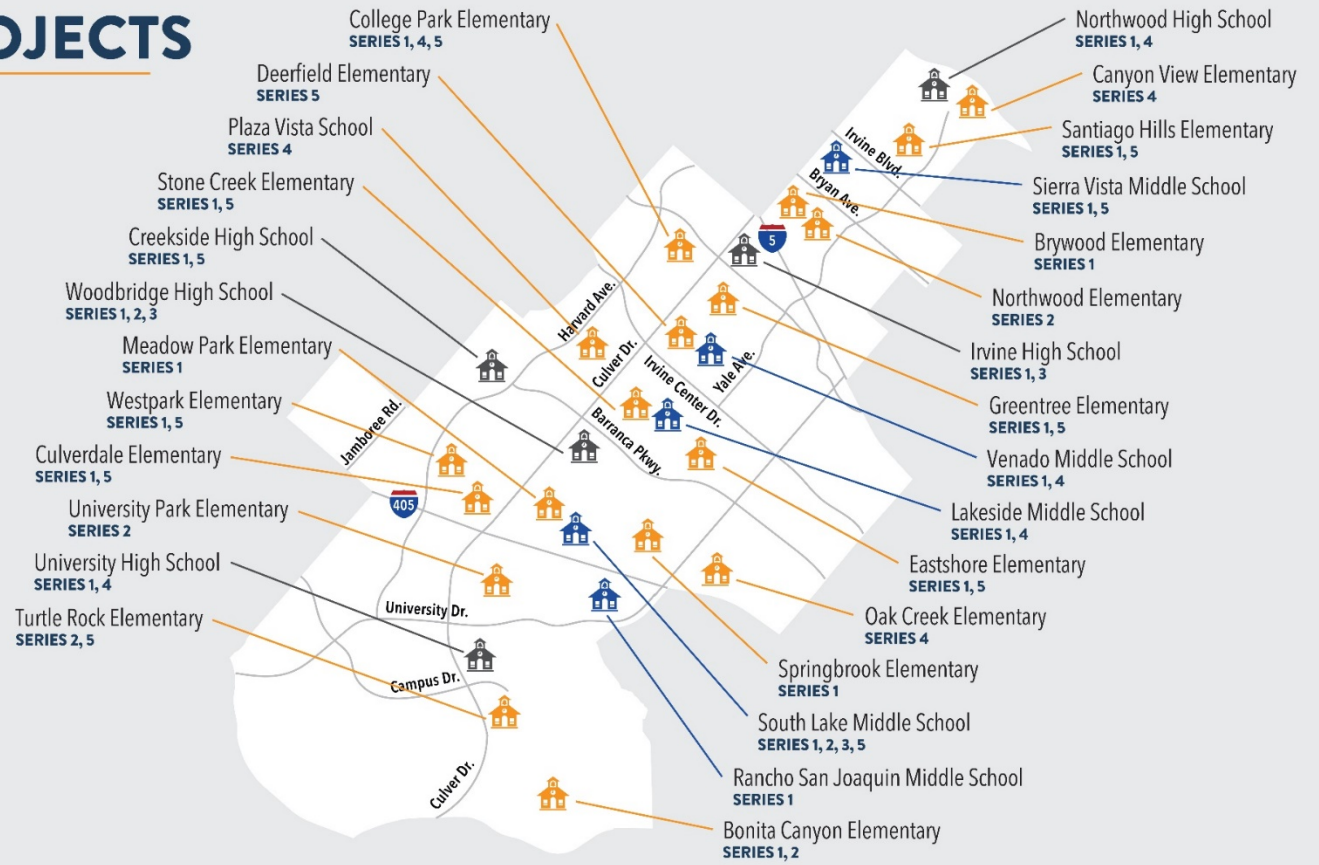
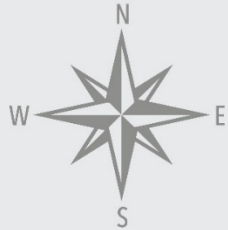


MEASURE E PROJECTS

 - High Schools

 - Middle Schools

 - Elementary Schools



SERIES 1
2016
21 schools

SERIES 2
2018
6 schools
(3 repeats)

SERIES 3
2021
1 school
(1 repeat)

SERIES 4
2024
8 schools
(5 repeats)

SERIES 5
2028
12 schools
(11 repeats)

FOR MORE INFORMATION:

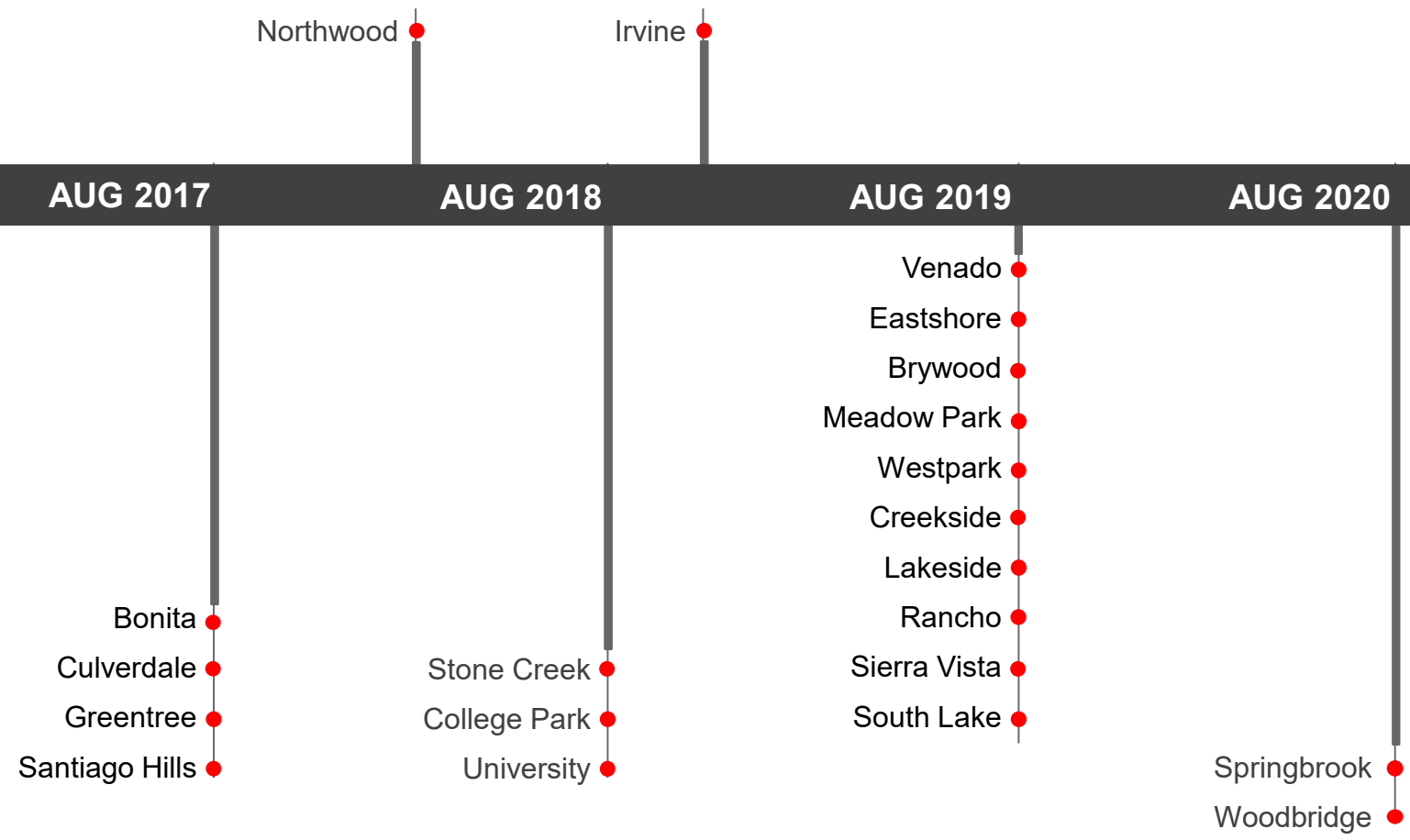


[IUSD.org/MeasureE](https://www.iusd.org/MeasureE)



(949) 936-5000

SERIES 1 - PROJECT COMPLETION DATE



SERIES 2 PRIORITIES

- **Safety and security**
 - Install interior doors at elementary school classrooms
- **Age of the school site**
 - Modernize eligible schools over 25 years old
- **Projects that will impact the greatest amount of students**
 - Projects for high schools and middle schools, which benefit most Irvine USD students, who will attend these schools
- **Upgrade Science Labs at middle schools**



DESIGN & CONSTRUCTION PROCESS

ACRONYMS

RFP
Request for Proposal

A/E
Architect / Engineer

CDE
California Department of Education

DSA
Division of State Architect

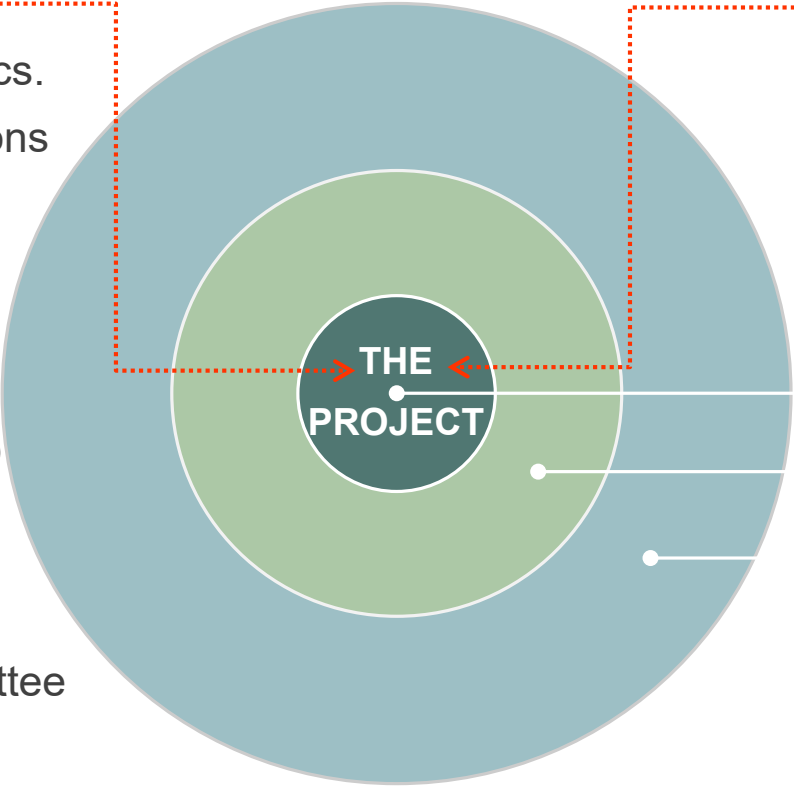
OPSC
Office of Public School Construction



STAKEHOLDERS

INTERNAL REVIEWS

- Ed. Specs./Technical Specs.
- Maintenance and Operations
- IT: network, data, AV
- Security
- Ed. Services
- Milestone Meetings (Architect & Construction Manager)
- Schools Facilities Improvement Measure Committee
- Citizens Oversight Committee
- Board of Education Study Sessions



AGENCY APPROVALS

- California Dept. of Ed.
- Div. of State Architect
- Fire Authority
- State Funding

Planning Committee

Staff Logistics/Impacts

Community Outreach

- Parents /Students
- H.O.A
- Neighbors
- City of Irvine



Project Overview



PROJECT SCOPE

- Construct a new building to include three classrooms with instrument storage and staff restroom
- Expansion and reconfiguration of food service
- Removal of three relocatable classroom buildings
- Replacement of five relocatable classroom buildings
- Relocation of Irvine Child Care Project portable
- Furniture allocation
- Site work associated with the new building



EXISTING SITE PLAN



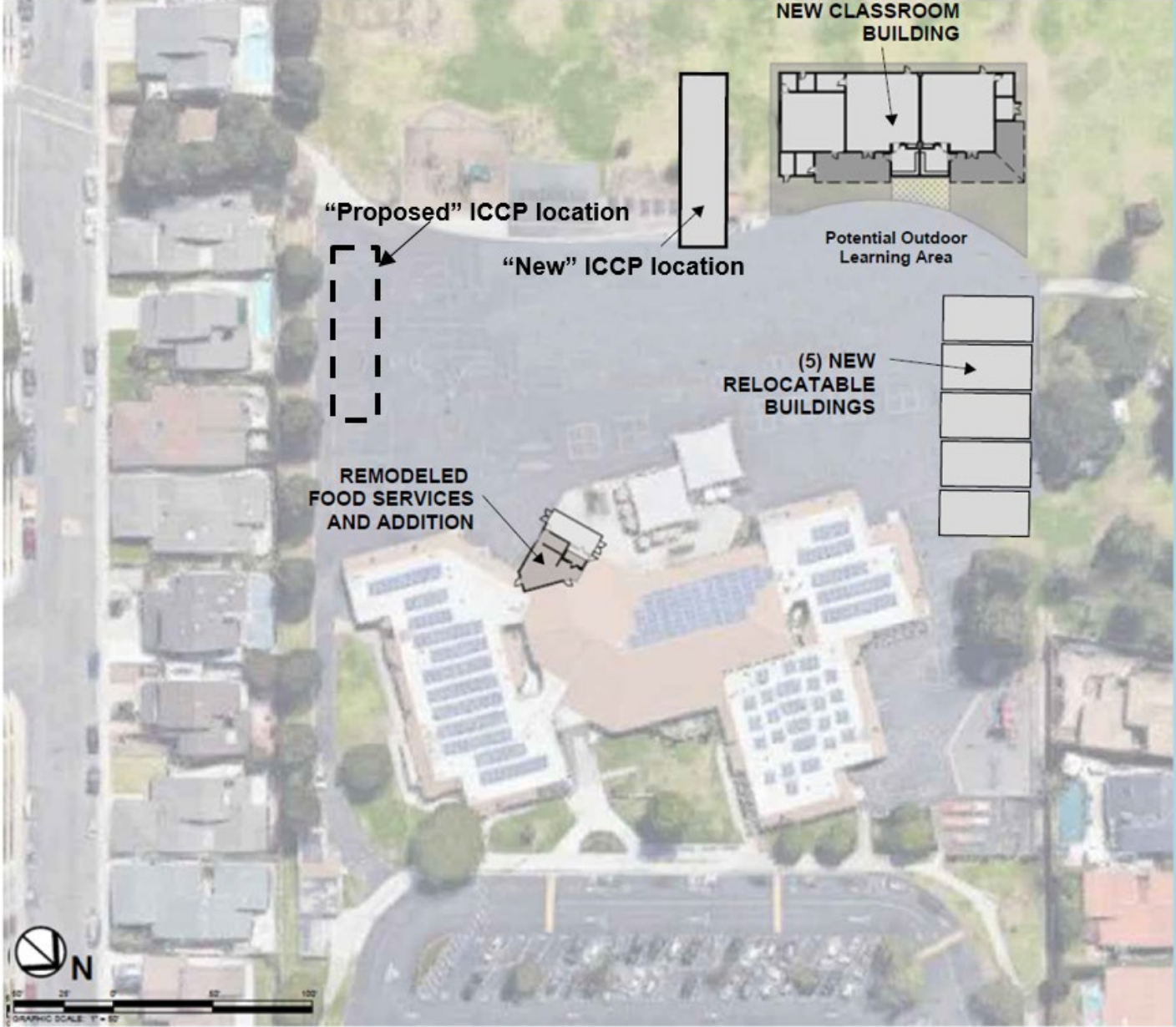
LEGEND		UTILIZATION KEY	
	EXISTING BUILDING	1	1ST GRADE
	EXISTING PORTABLE	2	2ND GRADE
	KINDERGARTEN CLASSROOM	3	3RD GRADE
	CLASSROOM	4	4TH GRADE
	SPECIAL EDUCATION	5	5TH GRADE
	SPECIALTY CLASSROOM	6	6TH GRADE
	OTHER SPACE	SAI	SPECIAL EDUCATION
		S	SCIENCE
		M	MUSIC
		ME	MEDIA
		IL	INNOVATION LAB
		L	LIBRARY
		CC	CHILD CARE
		RSP	RESOURCE SPECIALIST PROGRAM
		FS	FOOD SERVICE

EXISTING CLASSROOM COUNT	
3	KINDERGARTEN
3	1ST GRADE
3	2ND GRADE
3	3RD GRADE
3	4TH GRADE
3	5TH GRADE
3	6TH GRADE
1	SPECIAL EDUCATION
1	SCIENCE
3	MUSIC (NOT INCLUDING NEW BUILDING)
2	MEDIA
1	INNOVATION LAB
1	LIBRARY

Existing Classroom Count



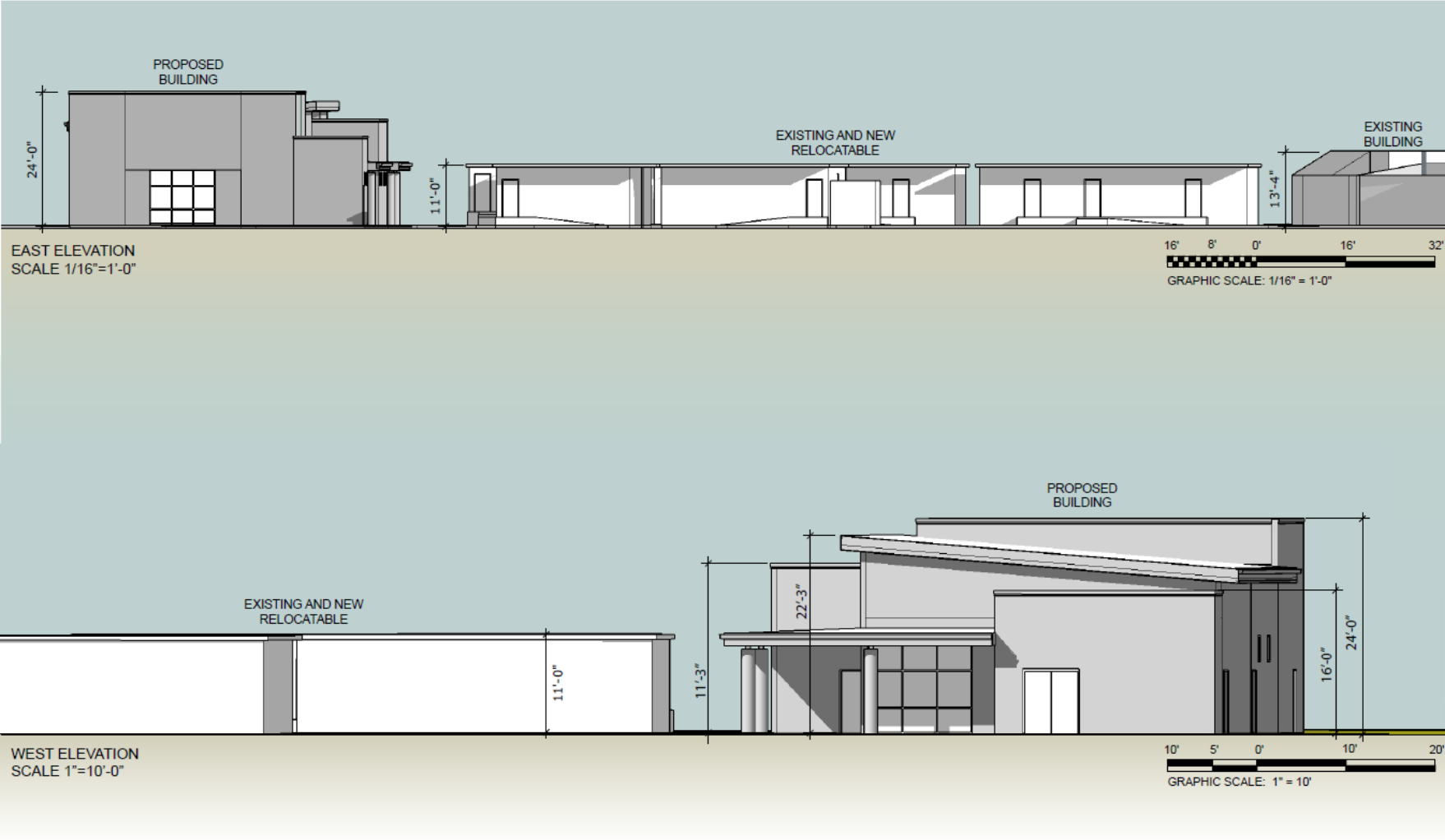
SITE PLAN FOR PROPOSED LOCATION



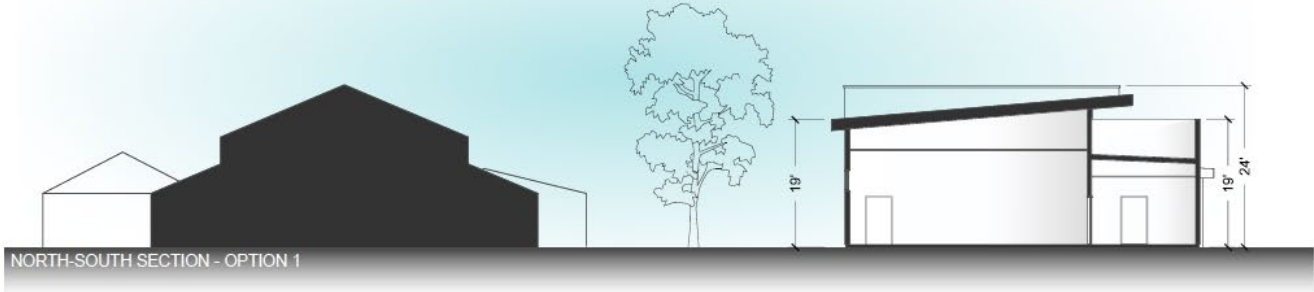
MUSIC BUILDING - EXTERIOR RENDERING



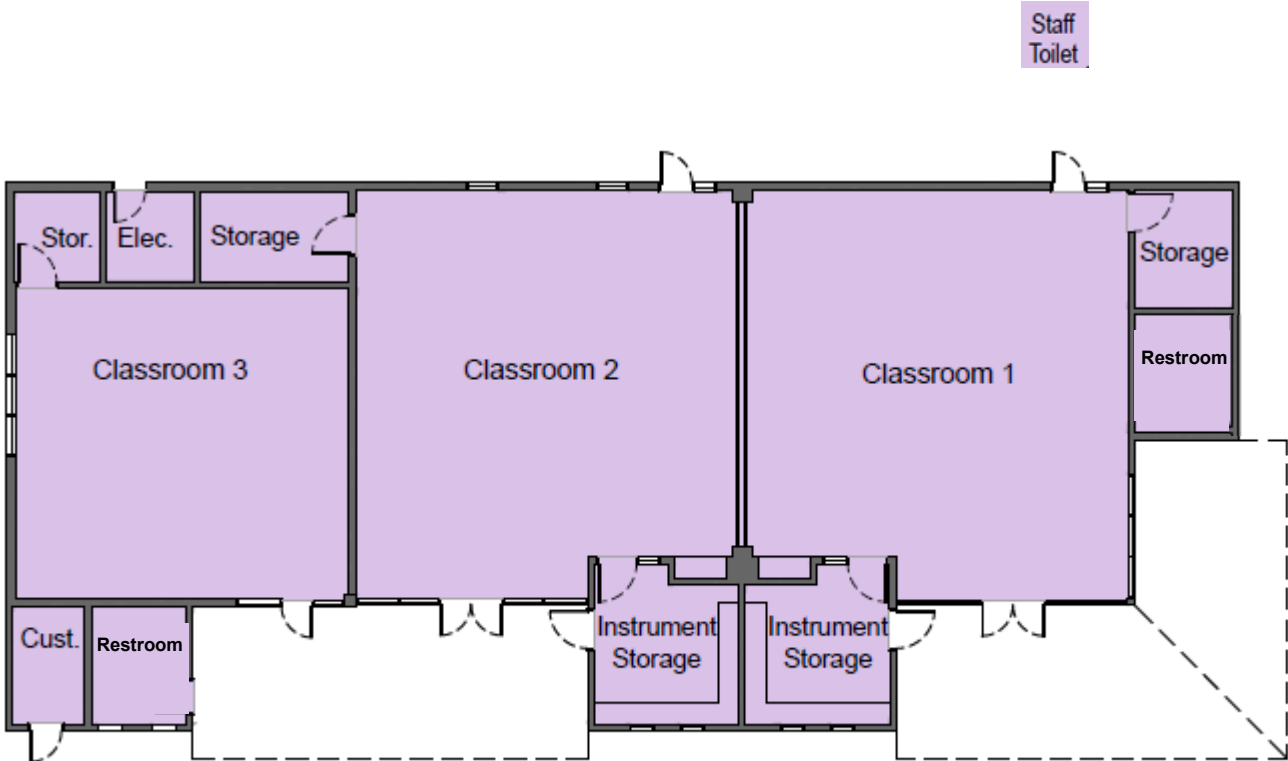
MUSIC BUILDING - ELEVATIONS



MUSIC BUILDING - ELEVATIONS



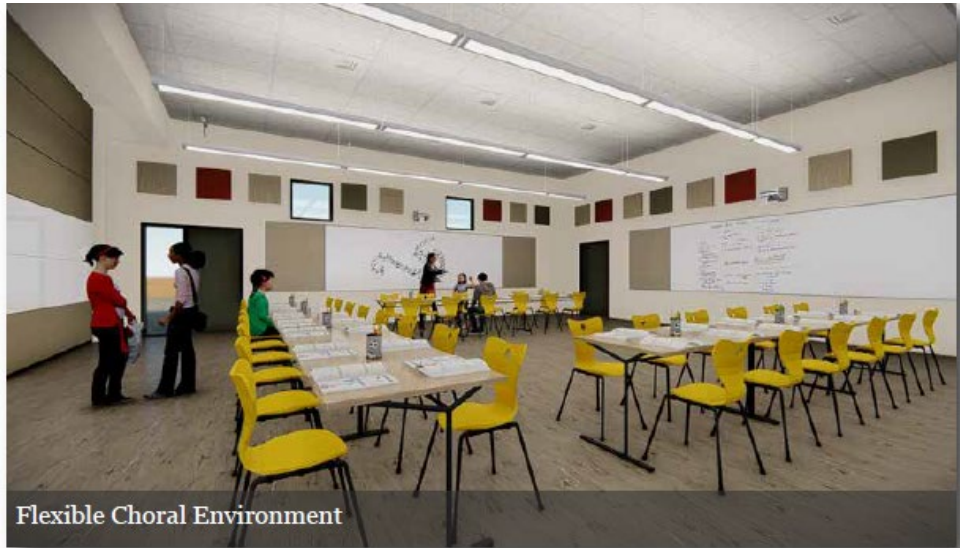
FLOOR PLAN



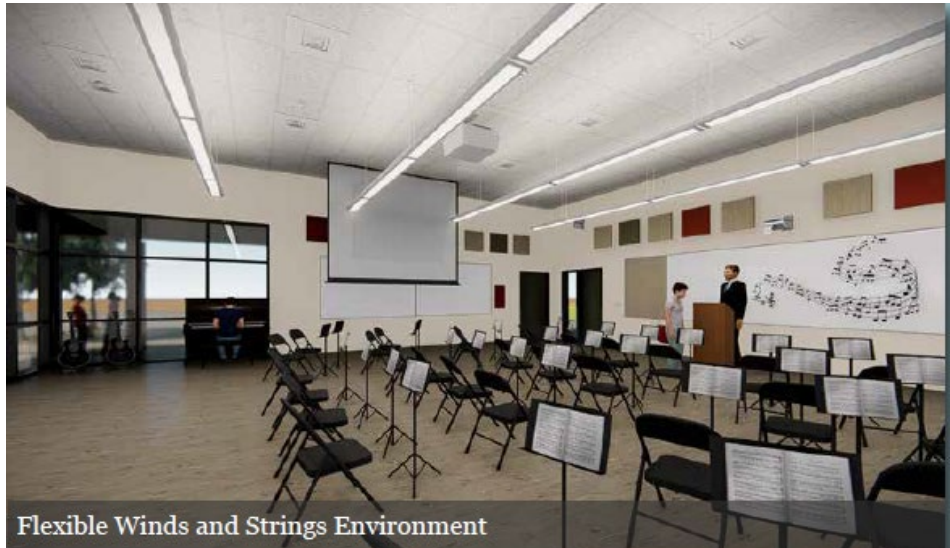
INTERIOR RENDERING



Flexible Classroom with Open Skyfold Wall

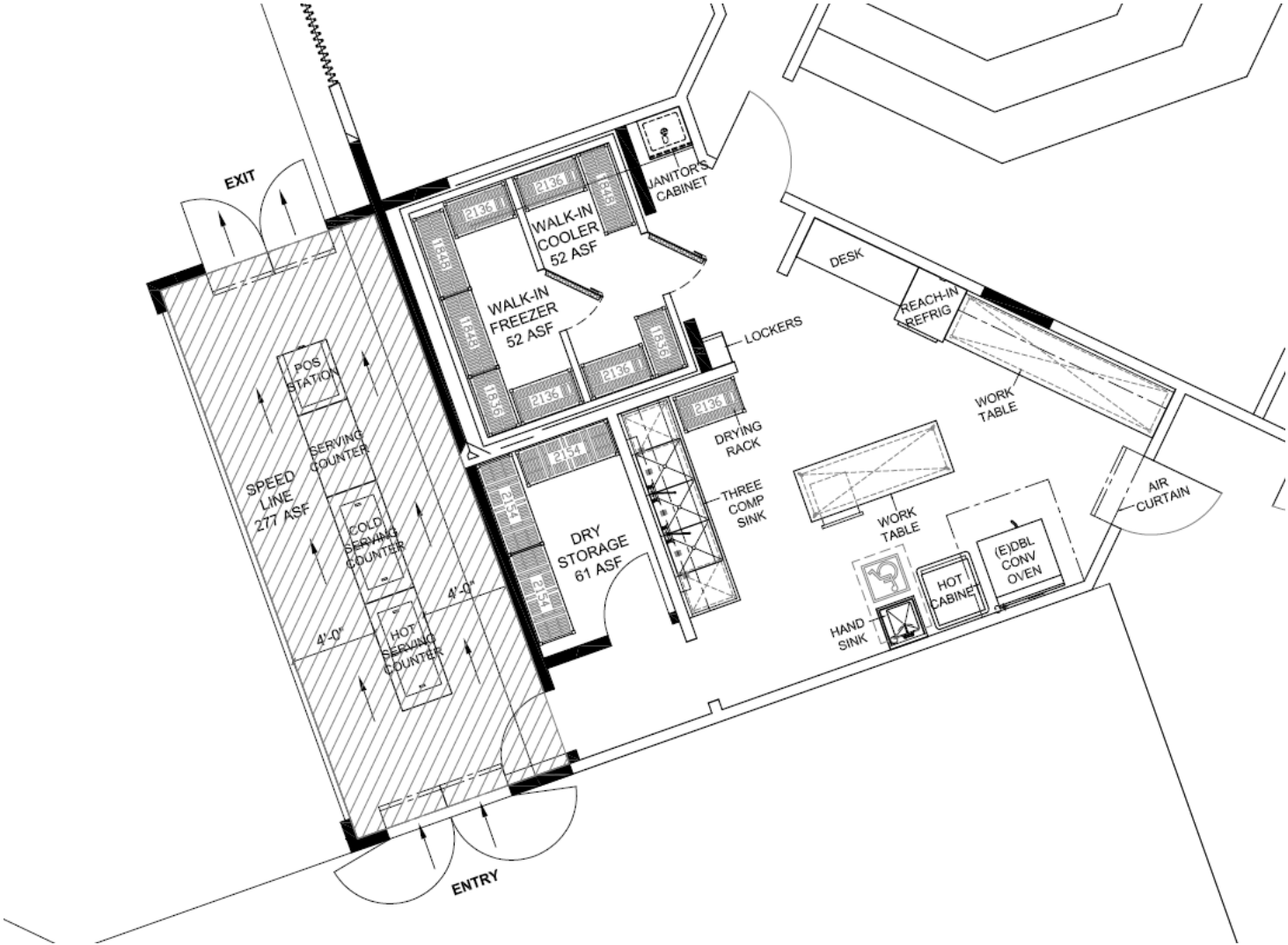


Flexible Choral Environment

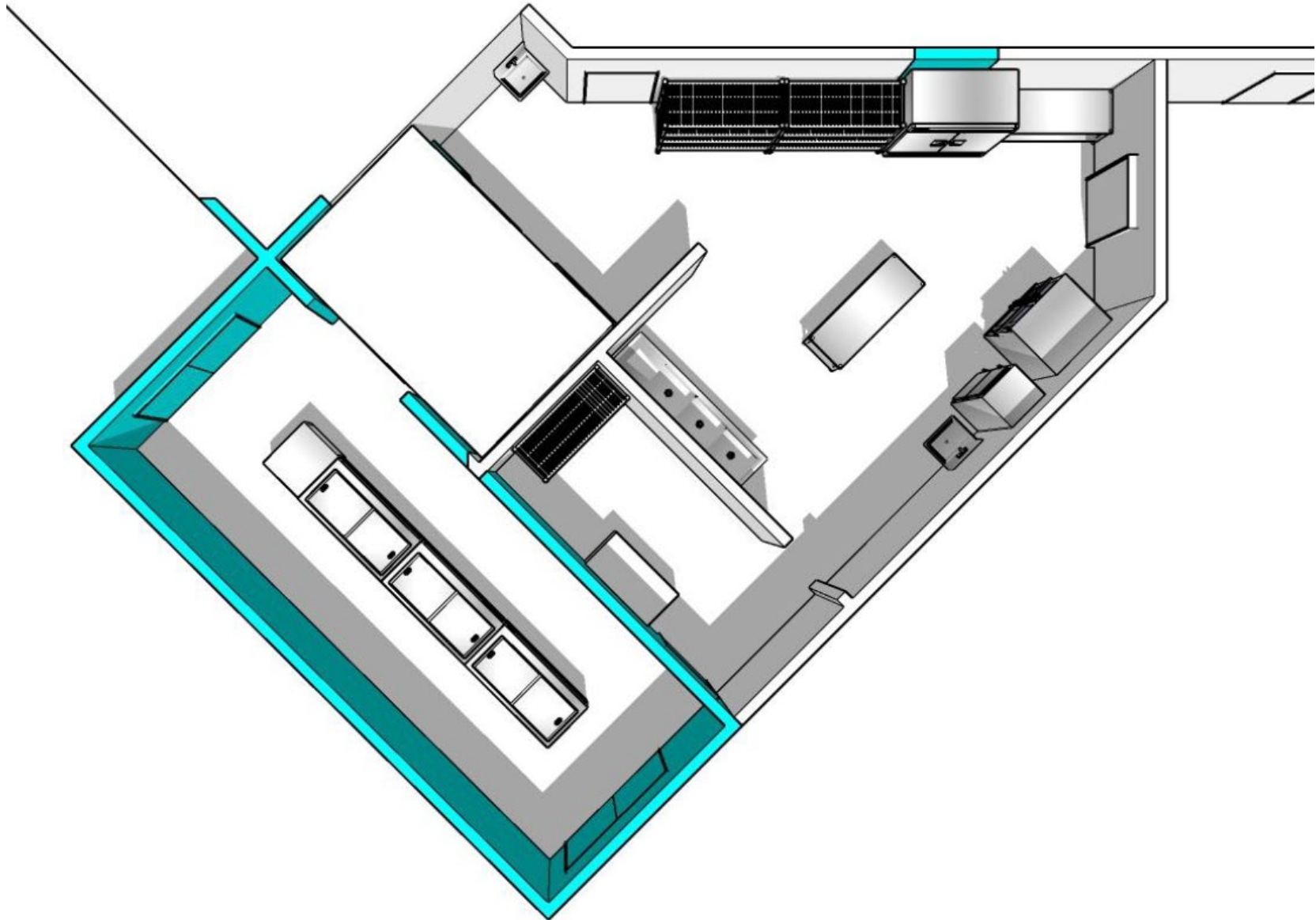


Flexible Winds and Strings Environment

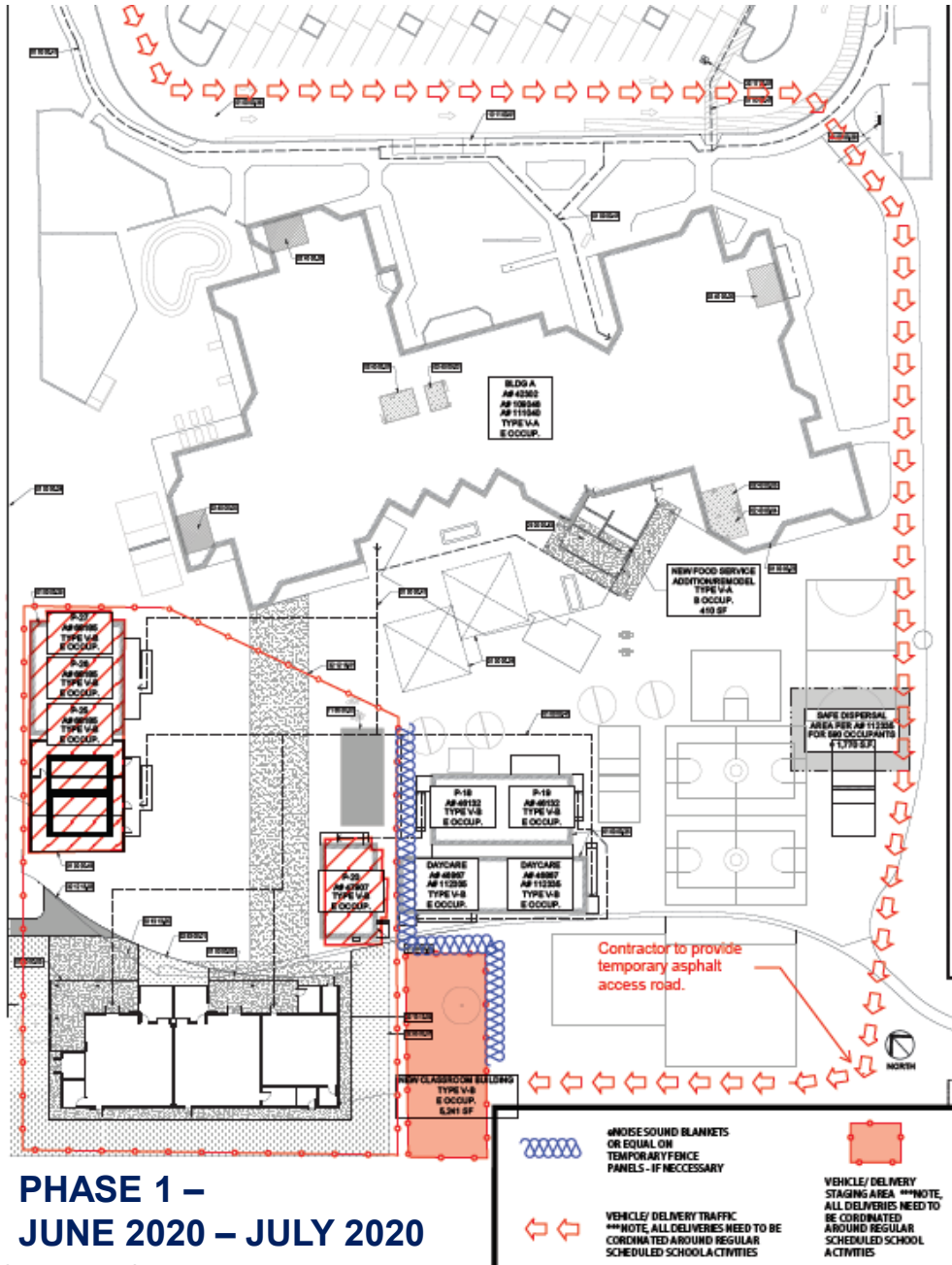
FOOD SERVICE EXPANSION/RECONFIGURATION - PROPOSED



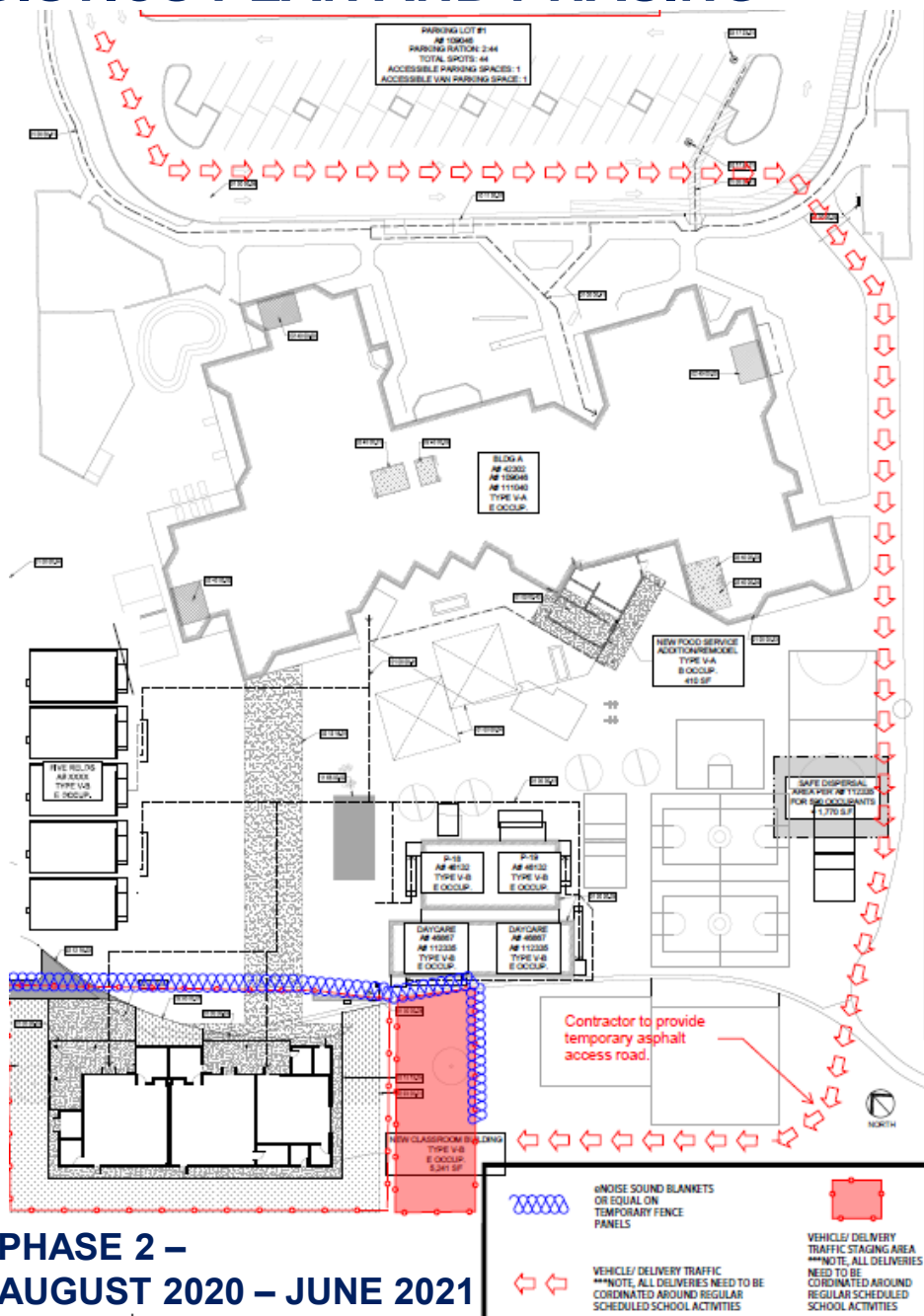
FOOD SERVICE OVERVIEW



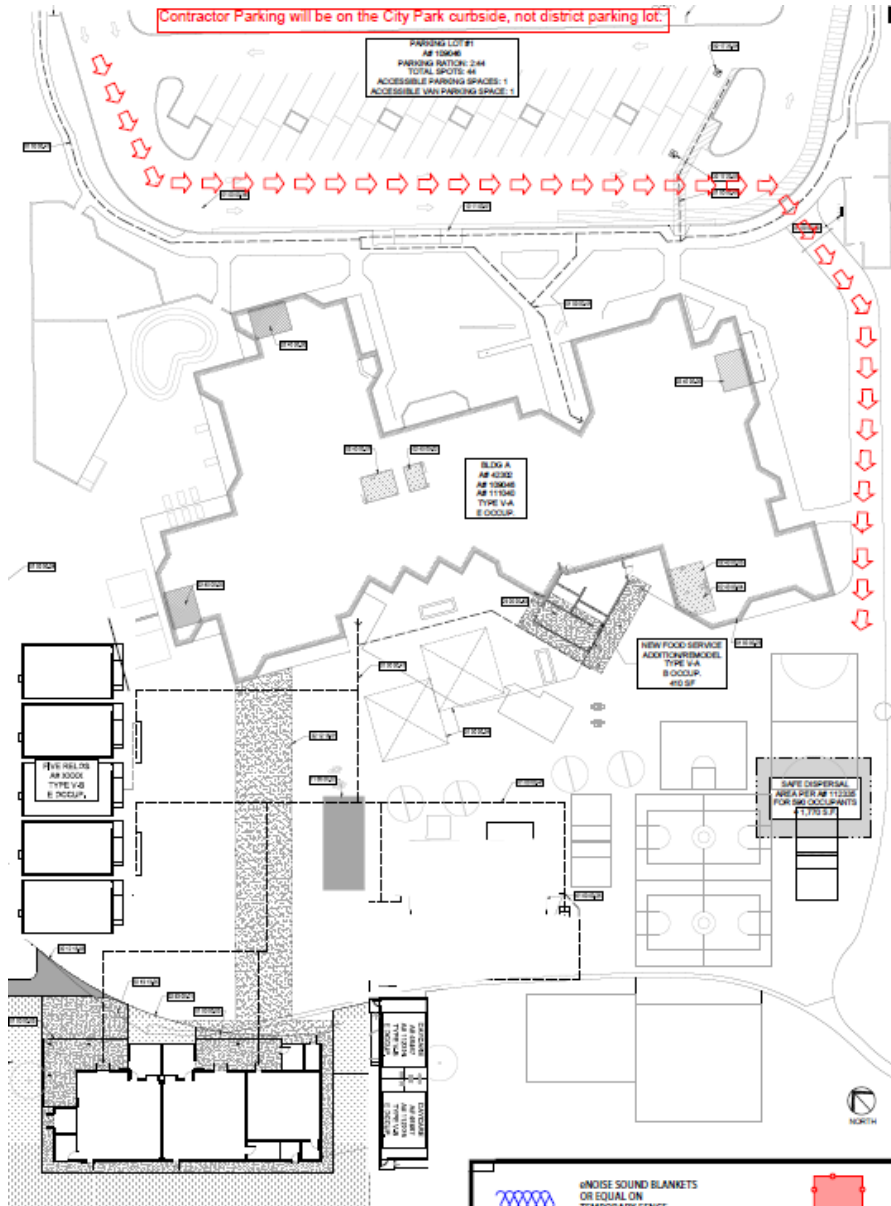
SITE LOGISTICS PLAN AND PHASING



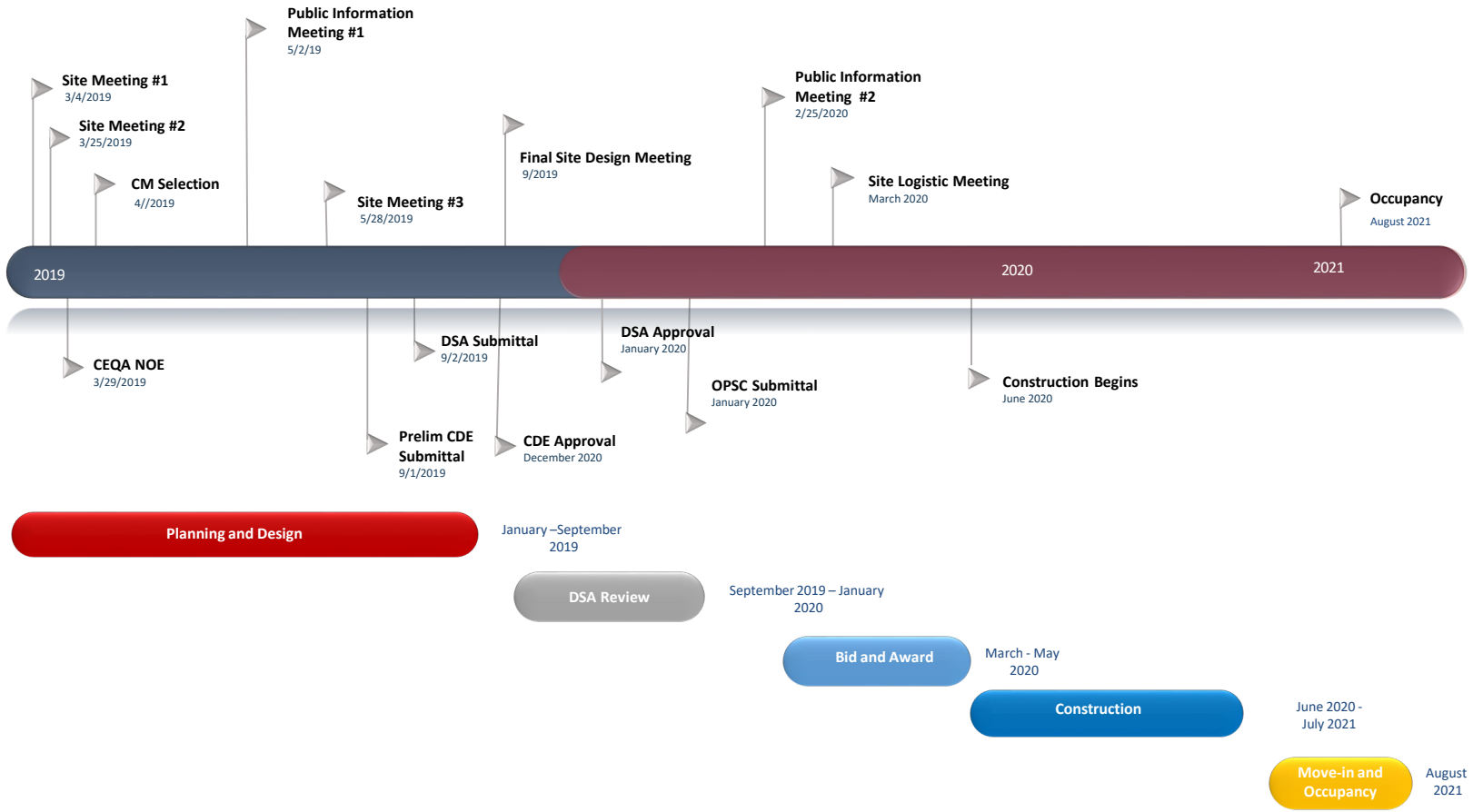
SITE LOGISTICS PLAN AND PHASING



SITE LOGISTICS PLAN AND PHASING



Northwood ES Project Schedule



MEASURE E RESOURCES

- Measure E Webpage
iusd.org/MeasureE
- Northwood ES Measure E Webpage – school site updates
iusd.org/departments/northwood-el-measure-e
- Citizens Oversight Committee Webpage
iusd.org/COC
- Contact Email for Questions/Concerns
MeasureE@iusd.org





QUESTIONS and ANSWERS