

Meadow Park ES Meeting Modernization & Interim Campus

October 12, 2017



MEETING AGENDA

- Introductions
- Overview of Measure E Program
- Project Overview
 - Meadow Park ES Modernization
 - El Camino Interim Campus
- Project Schedule
- Resources Background
- Questions and Answers



INTRODUCTIONS

- Kim Coffeen – IUSD, Director Facilities Planning
- Jill Cheng - IUSD Supervisor, Facilities/Construction
- Robert Ramirez– IUSD Planner, Facilities Planning

Additional Team Members:

- Kelvin Okino – IUSD, Executive Director, Facilities Planning and Construction
- Thomas Potwora– IUSD, Principal of Meadow Park ES
- Annie Brown – IUSD, Public Information Officer
- Matthew Nicholson - Architect, Ruhnau Ruhnau Clarke
- Debra Vaughan-Cleff – Architect, Webb Cleff Architecture and Engineering



Overview of Measure E Program



MEASURE E

- **Measure E: School Facilities Improvement Measure**
- **\$319 million bond to upgrade older schools within the District**
- **Voter approved in June 2016**
- **Includes 28 schools within the Irvine Unified School District**



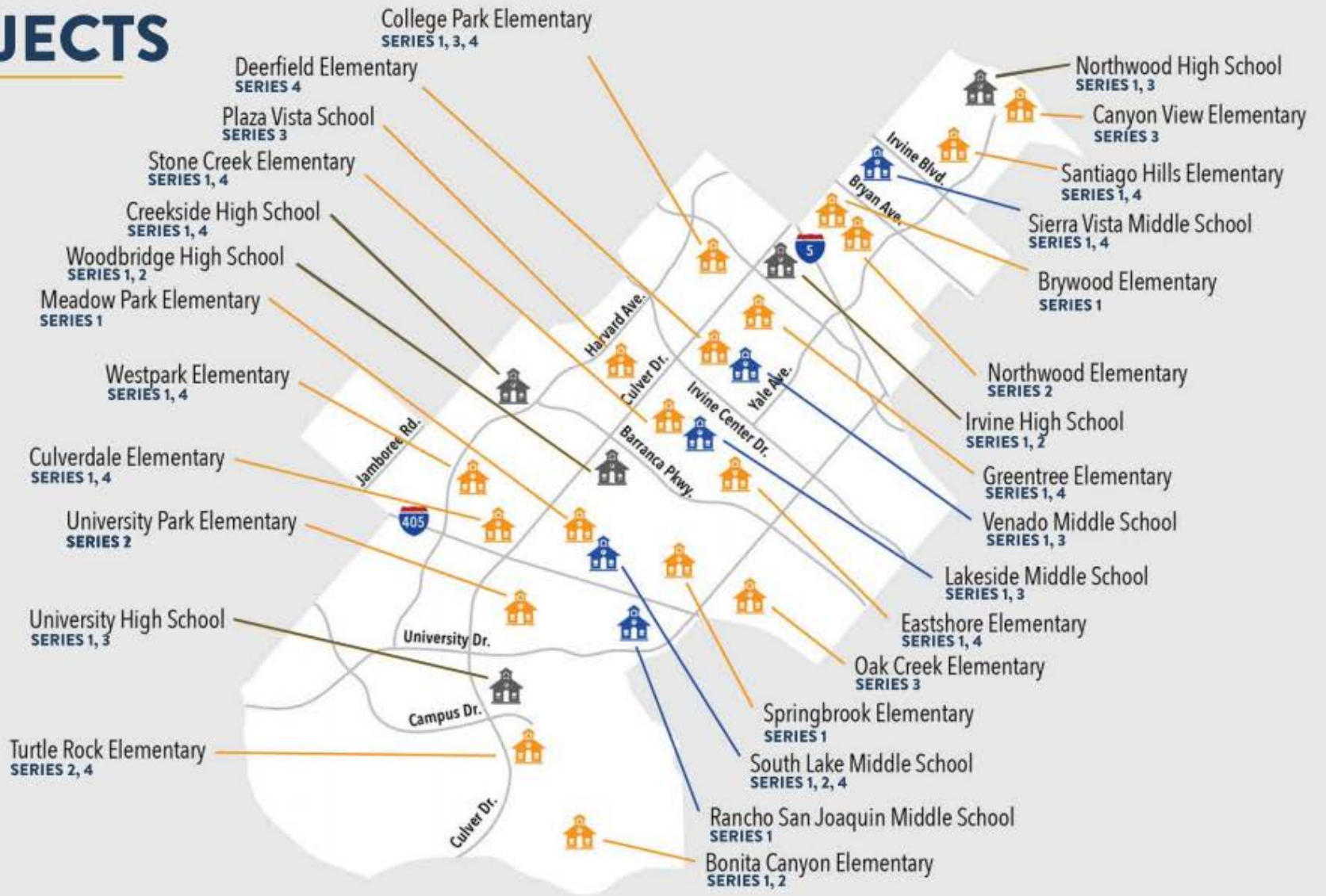
MEASURE E PROJECTS

 - High Schools 5

 - Middle Schools 5

 - Elementary Schools 18

28



SERIES 1 PRIORITIES

- **Safety and security**
 - Install interior doors at elementary school classrooms
- **Age of the school site**
 - Modernize eligible schools over 25 years old
- **Projects that will impact the greatest amount of students**
 - Projects for high schools and middle schools, which benefit most Irvine USD students, who will attend these schools
- **Upgrade Science Labs at middle schools**



Project Overview



Meadow Park ES Modernization



MODERNIZATION SCOPE

A. CODE REQUIREMENTS

- A01 Accessible parking / passenger loading zone
- A02 Accessible path of travel from public street and within campus
- A03 Door thresholds and hardware
- A04 Accessible signage
- A05 Accessible restroom upgrades
- A06 Accessible drinking fountains and (2) bottle filling stations
- A07 Lift at MPR Stage
- A08 Fire alarm upgrades
- A09 Revise existing sprinklers
- A10 Add fire rated walls
- A11 Structural upgrades for reconfigured spaces
- A12 Add restrooms
- A13 Reconfigure old Food Service to Restrooms
- A14 New Fire Hydrant to New Classroom Building

B. MAINTENANCE ESSENTIAL NEEDS

- B01 Replace/upgrade heating, ventilation, air conditioning, and energy management systems
- B02 Replace roof
- B03 Replace skylights
- B04 Replace deteriorated exterior siding
- B05 Portable upgrades, as required

C. MODERNIZATION BASIC NEEDS

- C01 Upgrade public address system
- C02 Replace floor finishes
- C03 Paint interiors and graphics
- C04 Upgrade plumbing fixtures in select locations (low flow toilets, faucets)
- C05 Main electrical service/panel upgrades
- C06 Maintain existing security system
- C07 Replace select doors (interior/exterior)
- C08 Replace water heaters, seismic strapping



EDUCATIONAL SPECIFICATIONS GUIDELINE SCOPE

D. ED. SPEC. GUIDELINE - CLASSROOMS

- D01 Enclose Classrooms, new interior doors
- D02 Upgrade student common areas; sliders, if budget allows into classrooms, technology, presentation surfaces, new flexible furniture, if site choose to use allocated funds, branding/way finding
- D03 Tackable walls
- D04 New audio/visual system and controls
- D05 New phone system (VOIP)
- D06 Refurbish existing casework
- D07 Replace floor finishes
- D08 New whiteboards
- D09 New LED lighting and ceilings
- D10 Furniture allocation, areas to be determined by site
- D11 Add (3) additional flexible classrooms

E. ED. SPEC. GUIDELINE - CORE SPACES

- E01 Renovate/expand food service to approx. 600-700 Square Feet, new equipment
- E02 Create new Innovation Lab
- E03 Create Design Lab (Science)
- E04 Modernize Library
- E05 Modernize MPR: finishes, lighting, sound systems
- E06 Create Student Support Services/Learning Center
- E07 Modernize Administration Minimal
- E08 Furniture allocation, areas to be determined by site

F. OUTDOOR IMPROVEMENTS

- F01 Exterior wireless access points
- F02 Add shade and seating areas
- F03 Other Outdoor Improvements



SITE PLAN



LEGEND

- Main Entry
- Secondary Entry
- Drop-Off
- Circulation
- Playfields/Landscape
- Hardcourts
- Play Apparatus
- Parking
- Courtyard
- Shade Shelter - N
- Trees
- Reconfiguration
- Addition
- Commons

UTILIZATION LEGEND

- Kindergarten Classroom
- Classroom
- Specialty Classroom
- Special Ed Classroom
- Portable (Color based on Program)
- Child Care (Portable)
- Other Space

- K Kindergarten
- DL Design Lab
- M Music
- OT Occupational Therapy
- RSP Special Ed/Resource
- PT Physical Therapy
- SAI Specialized Academic Instruction
- IL Innovation Lab

INNOVATION LAB



MULTI-PURPOSE ROOM



TYPICAL CLASSROOM



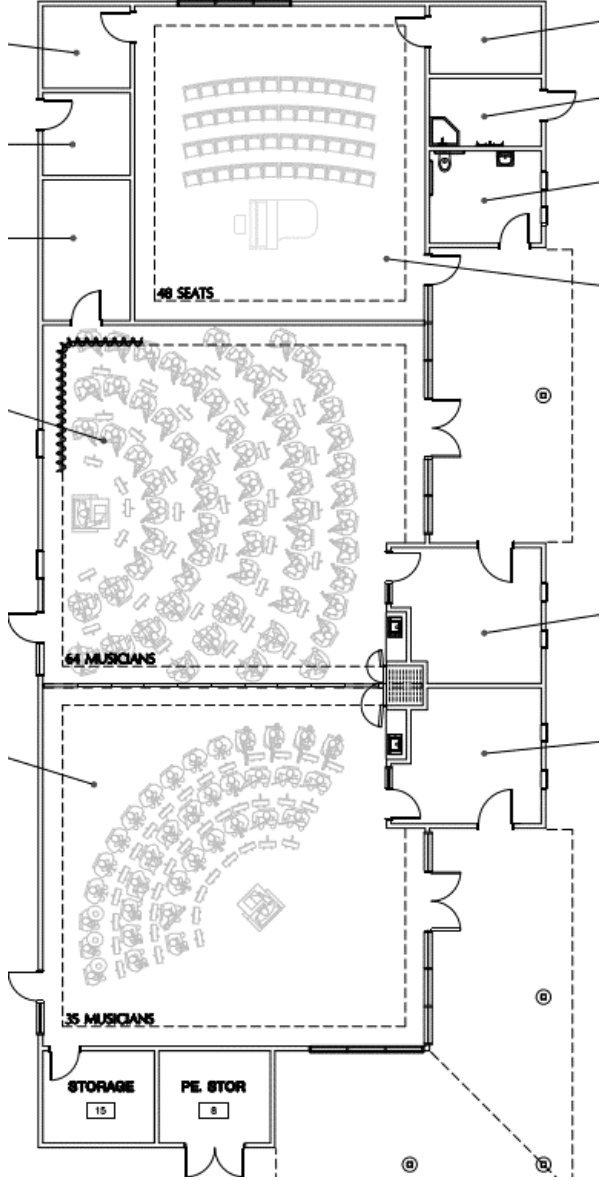
TYPICAL CLASSROOM



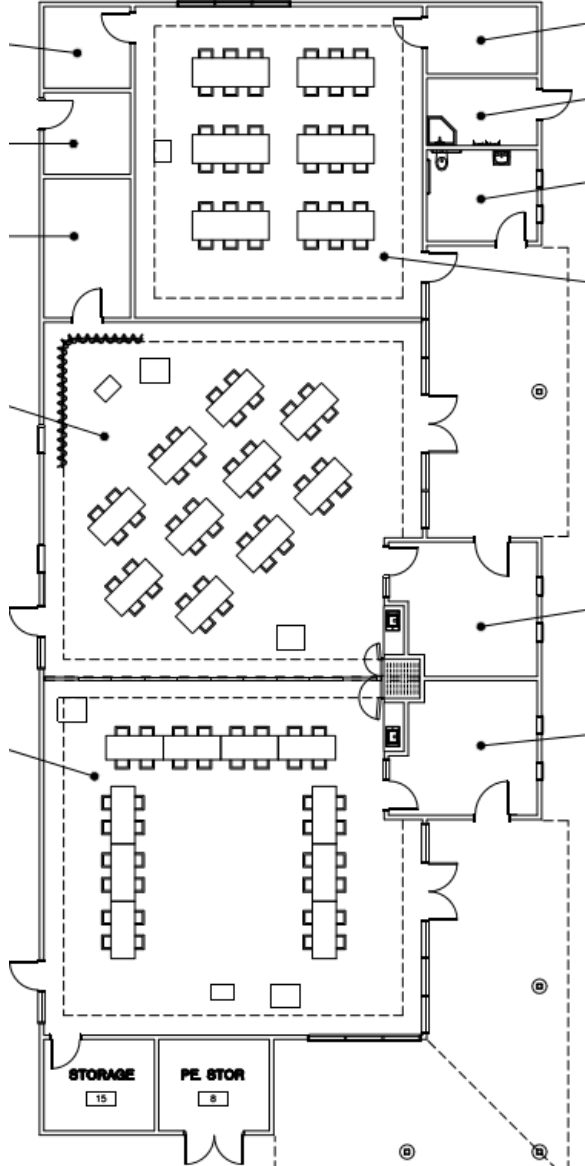
COMMONS



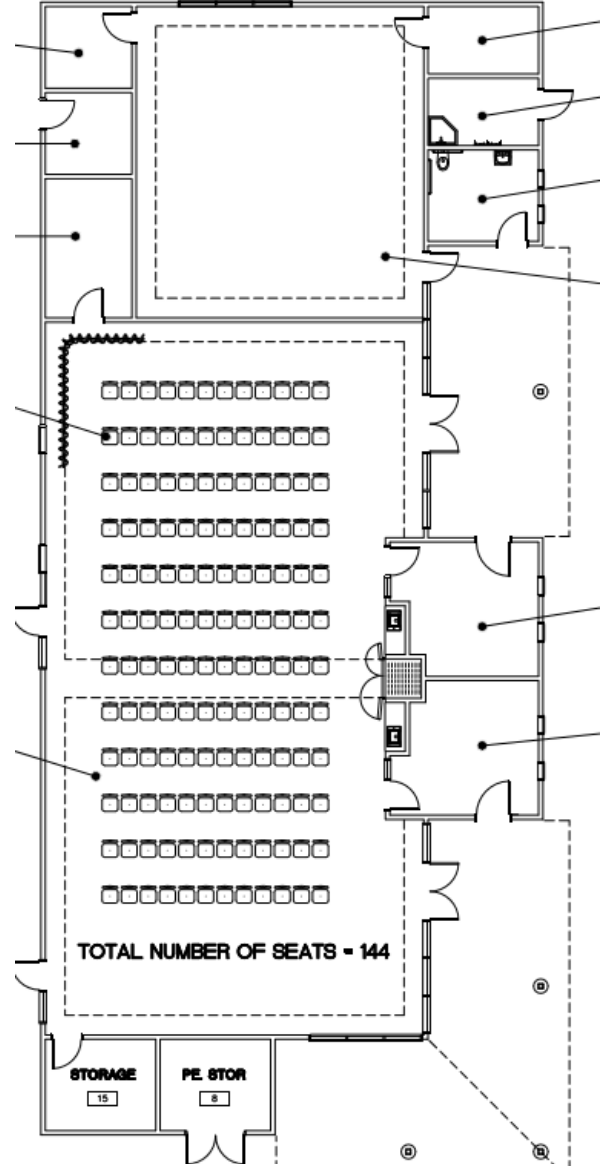
FLEXIBLE CLASSROOM / MUSIC BUILDING



Music Layout



Projects Layout



Assembly Layout



NEW CLASSROOM BUILDING FLOOR PLAN



NEW CLASSROOM BUILDING



NEW CLASSROOM BUILDING



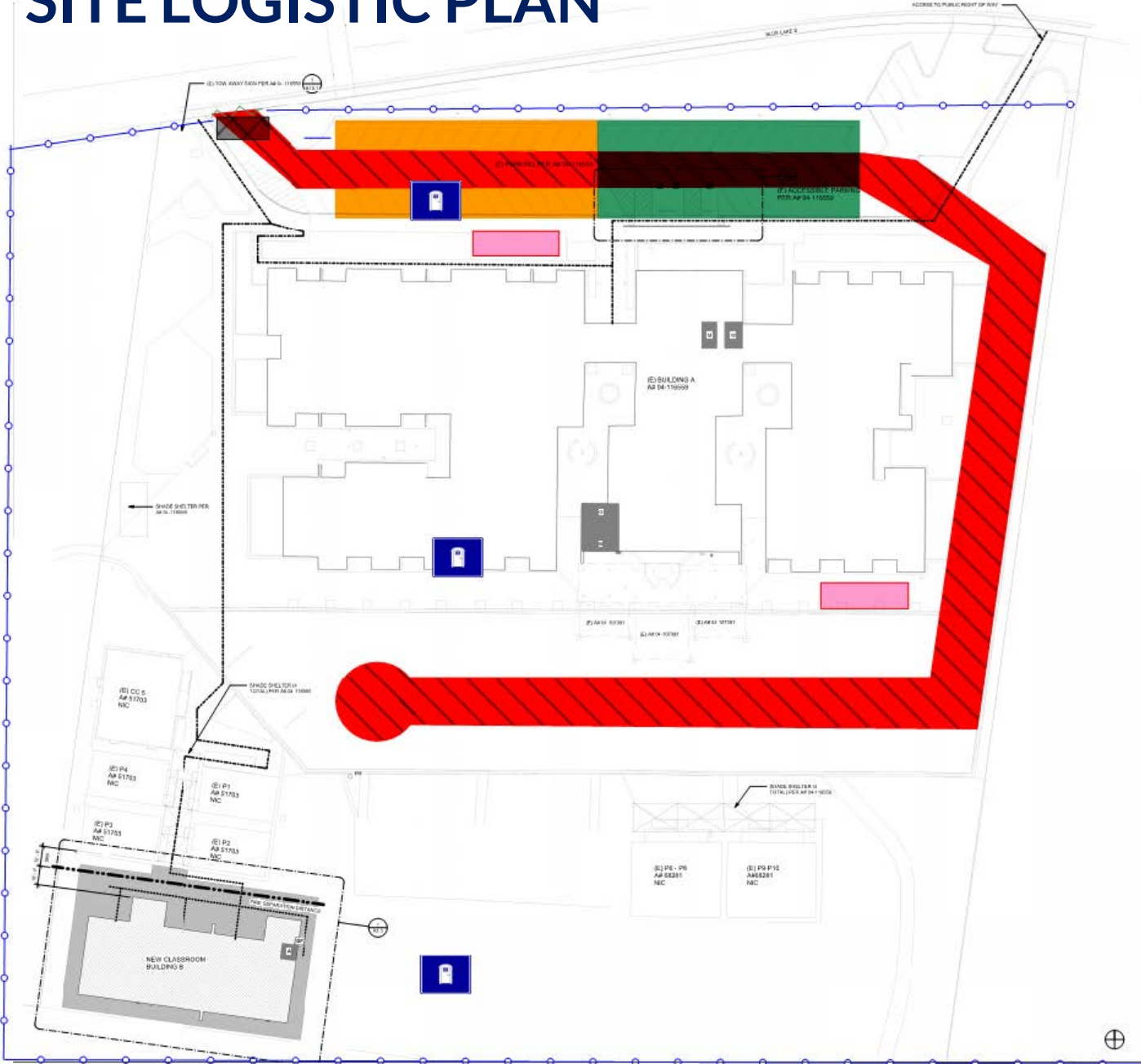
NEW CLASSROOM



NEW CLASSROOM



DRAFT SITE LOGISTIC PLAN

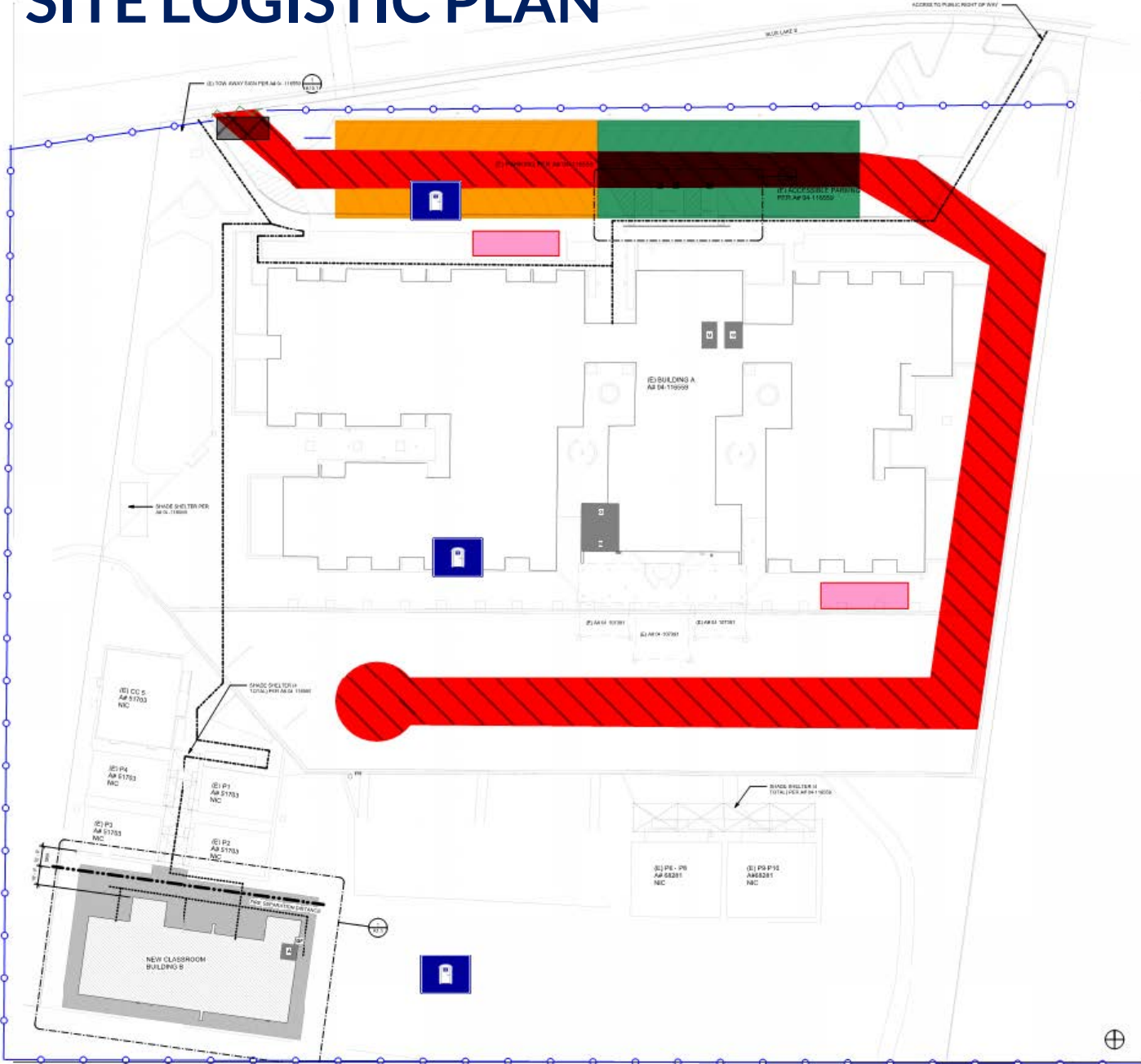


LEGEND

- CWD & AOR/IOR TRAILERS
- JOBSITE PARKING
- 8FT HIGH CHAIN LINK FENCE
- JOBSITE ENTRY / EXIT
- MUD SHAKER RUMBLE PLATES
- TRADE STORAGE CONTAINER AREA
- MATERIAL LAYDOWN AREA
- OCFA FIRE LANE
- TRASH DUMPSTERS
- P PORTA POTTIES



DRAFT SITE LOGISTIC PLAN



LEGEND

- CWD & AOR/IOR TRAILERS
- JOBSITE PARKING
- 8FT HIGH CHAIN LINK FENCE
- JOBSITE ENTRY / EXIT
- MUD SHAKER RUMBLE PLATES
- TRADE STORAGE CONTAINER AREA
- MATERIAL LAYDOWN AREA
- OCFA FIRE LANE
- TRASH DUMPSTERS
- PORTA POTTIES



El Camino Interim Campus



PROJECT SCOPE

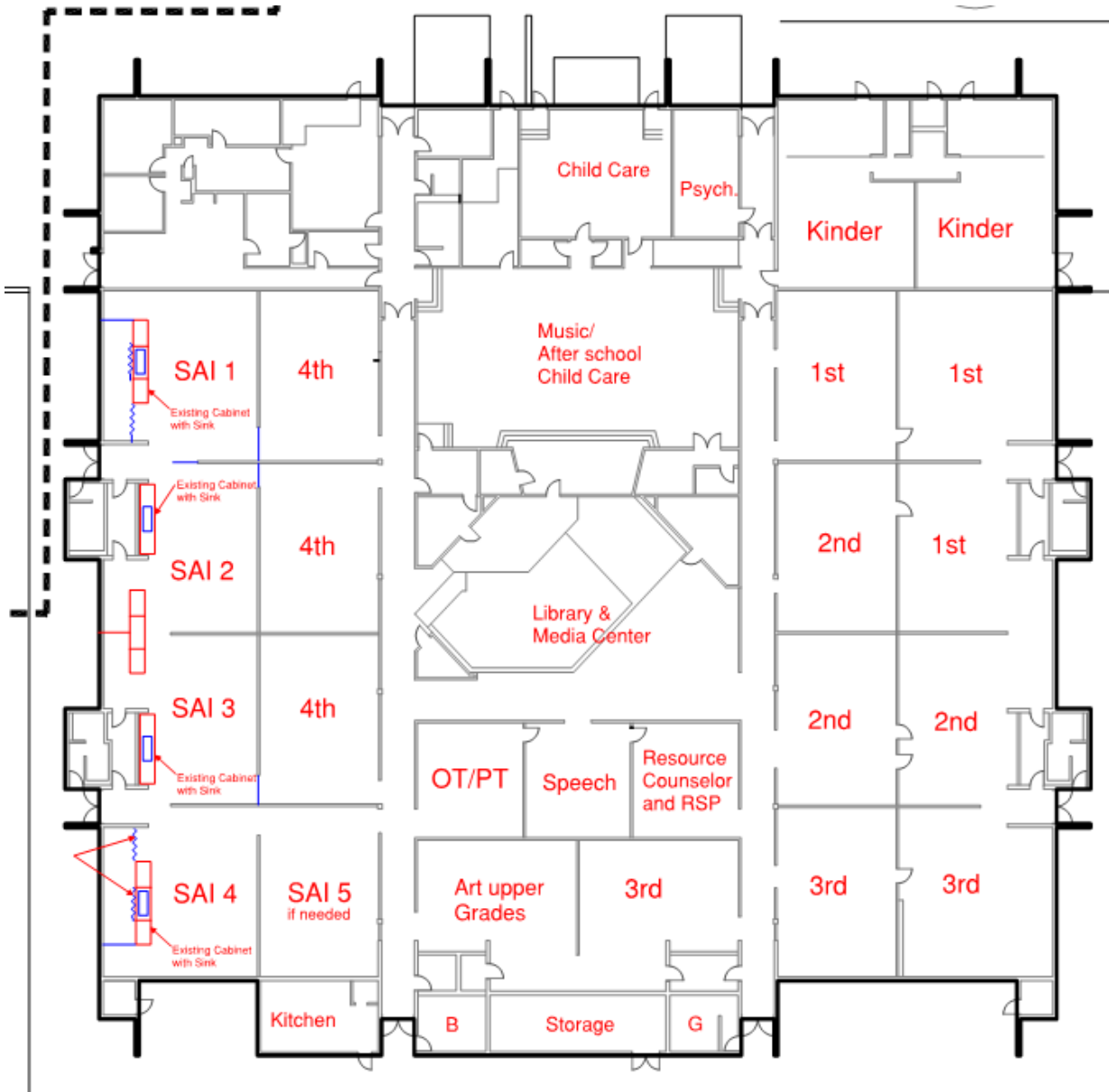
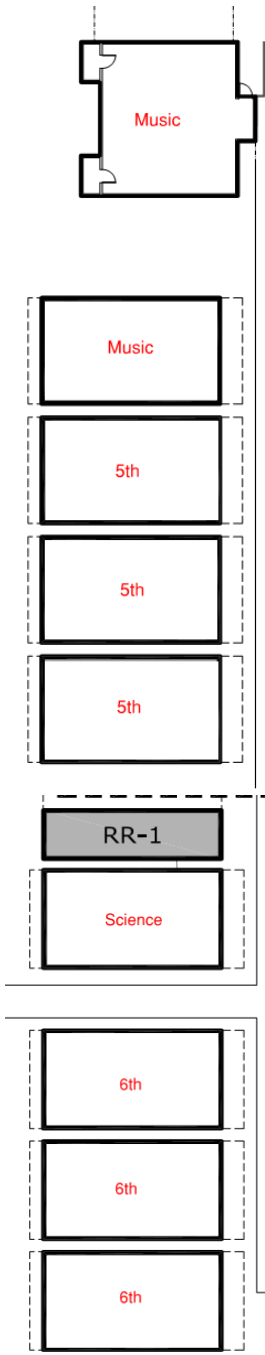
- 8 New portable classrooms and restroom facility
- Renovation of the existing building
- Replacement of playground equipment & play area
- Move in of Meadow Park July 2018



SITE PLAN



FLOOR PLAN







Transportation



Conceptual School Traffic Signing and Striping

LEGEND

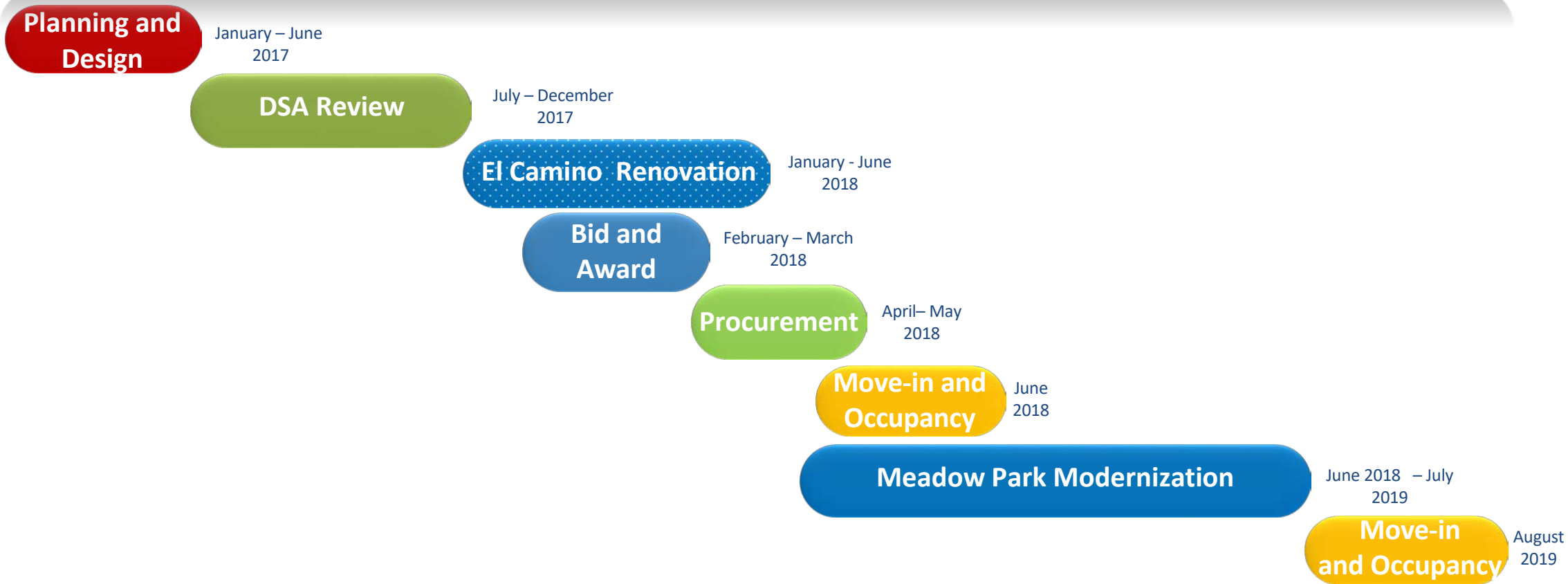
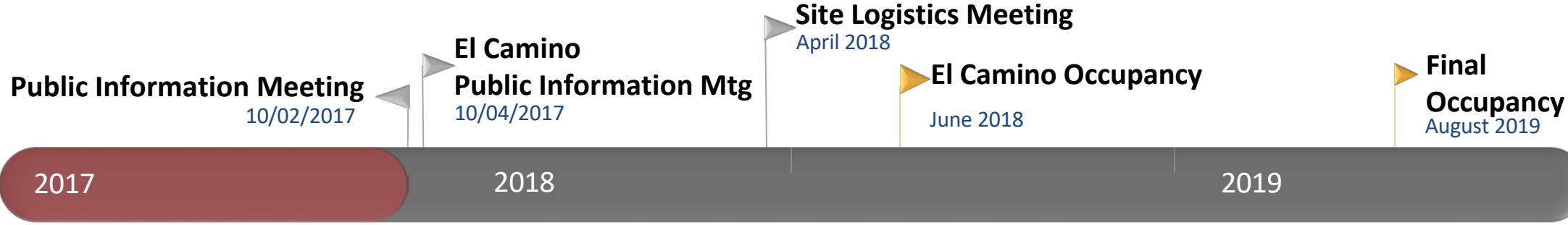
-  School Signs
-  School Crosswalk (Yellow)
-  Stop Signs
-  Bus Drop-Off /Pick-Up



Project Schedule



PROJECT MILESTONE SCHEDULE



MEASURE E RESOURCES

- Measure E Webpage
iusd.org/MeasureE
- Meadow Park Measure E Webpage – school site updates
iusd.org/MeasureEmp
- Citizens Oversight Committee Webpage
iusd.org/COC
- Contact Email for Questions/Concerns
MeasureE@iusd.org



MEADOW PARK MEASURE E WEBSITE






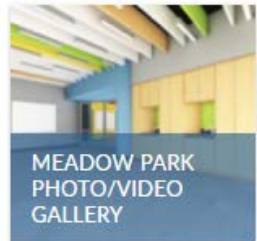
MEADOW PARK - MEASURE E

Measure E was passed by Irvine voters in June 2016 to ensure all students, not just those in newer neighborhoods, have access to modern learning environments and technology to support IUSD's high academic standards and to prepare students for 21st century college and career.

Measure E will provide a maximum available bond issuance of \$319 million for facilities improvements at 28 of the District's aging schools, including Meadow Park Elementary. Funding is currently planned to be issued in four series over 12 years, with construction anticipated over the next 15 years, which will enable IUSD to efficiently and effectively manage complex projects and resources. Funding for first series projects will be up to \$95 million.

What this means for Meadow Park is exciting – during this first series we are scheduled to receive modernizations and repairs, building system upgrades and classroom doors, among other upgrades. Click here to see the proposed project list.

Although we are in the early planning stages and the details have not been finalized, Meadow Park leadership and IUSD are committed to keeping our school community updated at every step of the project. Please check back regularly for Meadow Park Measure E updates, news and scheduled projects. For general Measure E information or information about the Citizens Oversight Committee, visit iusd.org/MeasureE.

 <p>MEADOW PARK MEASURE E UPDATES</p> <p>Learn More</p>	 <p>MEADOW PARK PROJECTS</p> <p>Learn More</p>	 <p>MEADOW PARK TIMELINE</p> <p>Learn More</p>
 <p>MEADOW PARK TEMPORARY RELOCATION</p> <p>Learn More</p>	 <p>MEADOW PARK FAQS</p> <p>Learn More</p>	 <p>MEADOW PARK PHOTO/VIDEO GALLERY</p> <p>Learn More</p>



MEASURE E: SERIES 1

MEASURE E FIRST SERIES 1 VIDEO
CLICK HERE

General Measure E Information

Citizen Oversight Committee





QUESTIONS *and* ANSWERS