

**Irvine Unified School District**

**Facilities Study Session**

**Measure E**

**Series 1, Series 2 and AFAP**

**Board of Education**

Paul Bokota  
Lauren Brooks  
Betty Carroll, President  
Ira Glasky  
Sharon Wallin

**June 2, 2020**



# AGENDA

- **Introductions**
- **Financing / Funding**
- **Budget**
  - Series 1, Series 2 and Bond Series Overview
- **State Funding**
- **Master Schedule**
- **Projects In Design**
  - Augmented Funds to Accelerate Projects (AFAP) and Series 2
- **Projects Under Construction**
  - Series 2 and Series 1
- **Non-Measure E Improvements - Update**
  - Learning Environment Enhancement Projects (LEEP)



# MEASURE E TEAM

Facilities Planning and Construction Services			Fiscal Services
Joe Chapin* Director, Construction Services	Dana Grudem* Supervisor, Facilities Planning	Christa DeBoer** Supervisor, Facilities/Construction	Sherry McGrew Analyst, Financial Construction Analysis
Jesse Barron* Assistant Director, Facilities Planning	Robert Ramirez* Facilities Planner	Spencer Jordan** Building Inspector, DSA Class 1	Jenny Chau Accountant, Facilities Projects
Ed Hernandez* Supervisor, Construction Services	Dee Mitchell* Specialist, Construction Services	Bethany Short** Specialist, Construction Services	Caroline Kim Technician, Accounting
Bruce Monroe* Supervisor, Construction Projects	Cathie Rain* Administrative Assistant II	** Indicates full-time assignment during 2019/20 Fiscal Year on Measure E projects. Full-time assignments will continue in 2020/21 Fiscal Year.	
Freddy Medina* Supervisor, Construction Projects	* Indicates part-time assignment during 2019/20 Fiscal Year due to increase in Measure E projects. Part-time assignments will decrease in 2020/21 Fiscal Year.		



# COC MEMBERS

Citizens Oversight Committee (COC)		
<b>Todd Cope (Vice Chair)</b> Parent Active in Parent Teacher Org.	<b>Patti Ragland</b> Bona-fide Taxpayers Assoc. Rep.	<b>Kenric Stone</b> Member of Community At-Large
<b>Adele Heuer</b> Member of Community At-Large	<b>Jeffrey Schmehr</b> Parent / Guardian	<b>Betty Jo Woollett</b> Senior Citizen Org. Rep.
<b>Richard Knowland</b> Business Org. Rep.	<b>Kristi Smemoe (Chair)</b> Parent / Guardian	
<b>Ryan Larson</b> Parent Active in Parent Teacher Org.	<b>Connie Stone</b> Parent Active in Parent Teacher Org.	

- **Meet Quarterly (next meeting July 27, 2020)**
- **COC webpage [iusd.org/COC](https://iusd.org/COC)**





# Financing / Funding



# MEASURE E FINANCING

- Original Measure E Bond capacity based on annual Assessed Valuation growth within the SFID of 3% - 4.5% to be issued in four (4) Series
  - Yielding projected project funding of \$250.8 Million up to \$319.0 Million
  - Measure E initial budget set at \$250.8 Million
- Annually review Assessed Valuation to determine growth and potential impact to bonding capacity
- Based on growth within the SFID, assumptions increased to annual Assessed Valuation growth of 3.5%
  - Yielding projected project funding of \$272.3 Million
  - Increase number and frequency of Series from four (4) to five (5)



# REVISED MEASURE E BOND SERIES (3.5% GROWTH)

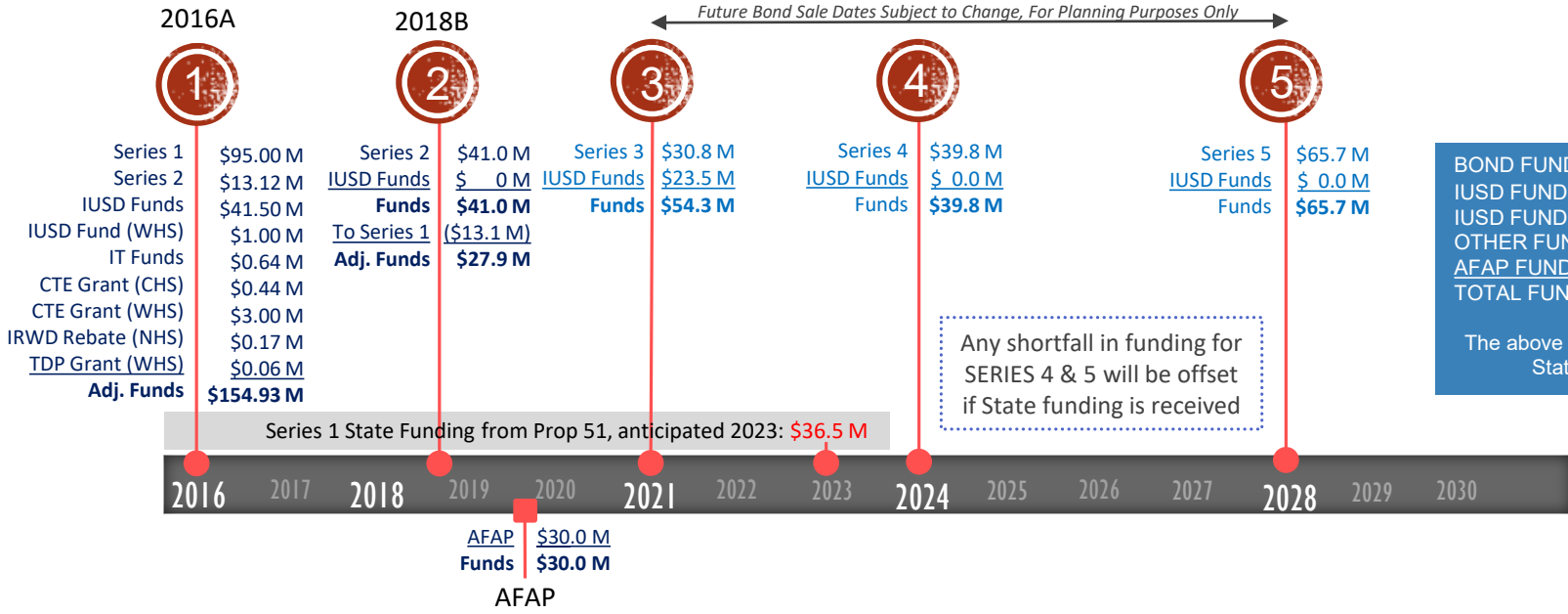
- Series 1 funds received October 26, 2016
- Series 2 funds received September 13, 2018

<u>ORIGINAL</u>		<u>ISSUED/PROPOSED</u>	
2016 (Series 1)	\$ 95.0M	2016 (Series 1)	\$ 95.0M
2021 (Series 2)	\$ 51.9M	2018 (Series 2)	\$ 41.0M
2025 (Series 3)	\$ 49.4M	2021 (Series 3)	\$ 30.8M
2029 (Series 4)	\$ 54.5M	2024 (Series 4)	\$ 39.8M
<u>TOTAL</u>	<u>\$ 250.8M</u>	2028 (Series 5)	\$ 65.7M
		<u>TOTAL</u>	<u>\$272.3M*</u>

\*Maximum Bond Capacity is \$319.0M



# FUNDING TIMELINE



BOND FUNDS:	\$ 272.3 M
IUSD FUNDS:	\$ 65.0 M
IUSD FUNDS (WHS):	\$ 1.0 M
OTHER FUNDS:	\$ 4.3 M
AFAP FUNDS:	\$ 30.0 M
<b>TOTAL FUNDS:</b>	<b>\$ 372.6 M</b>

The above figures exclude future State Grant funds.



# CURRENT BONDS AND DISTRICT FUNDS



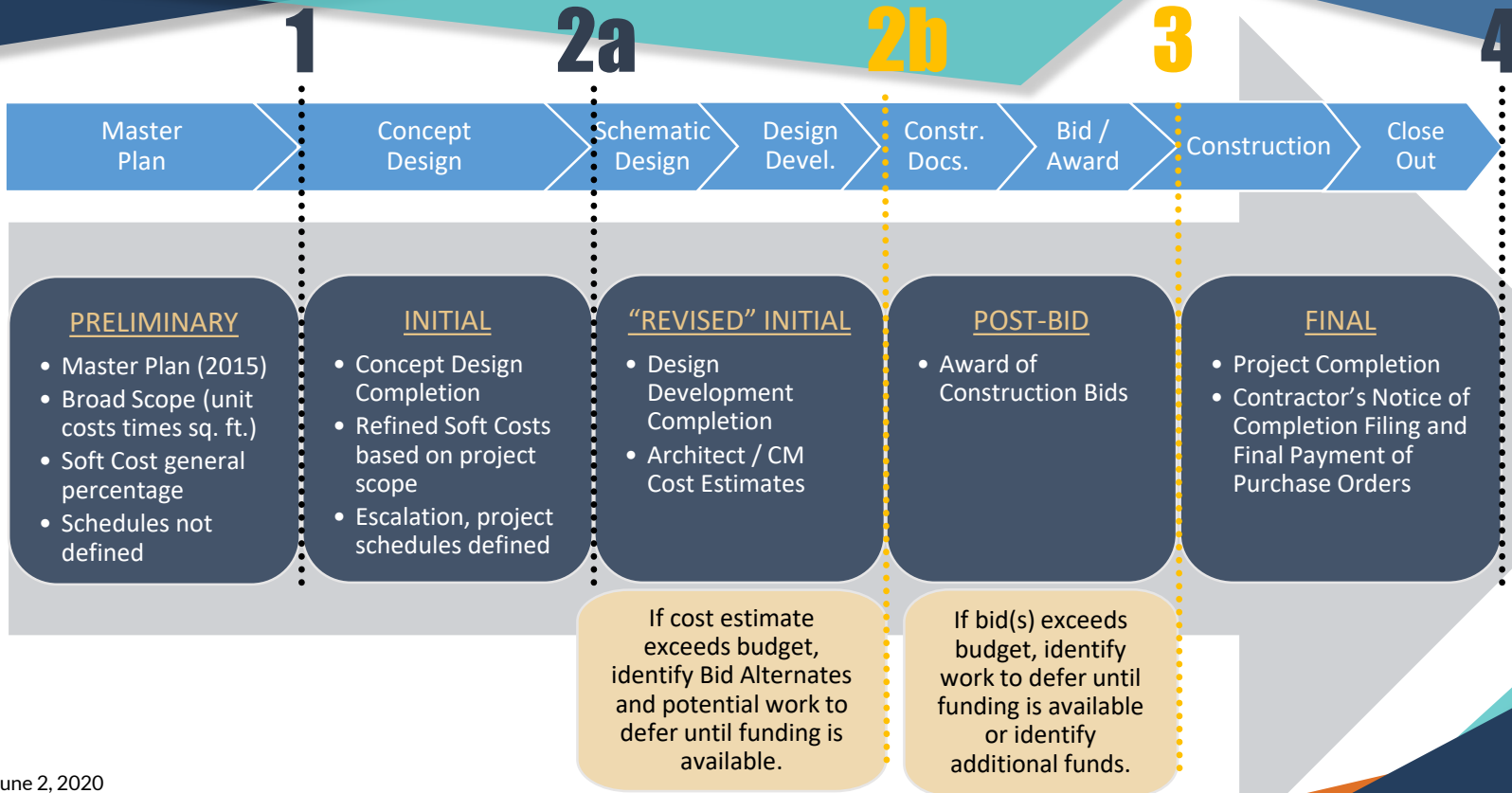
<b>FUNDS COMMITTED (Series 1 , 2 and AFAP)</b>	<b>\$ 212,814,764</b>
<b>Series 1 Funds</b>	<b>\$ 154,930,259</b>
Bond Series 2016A (Series 1)	\$ 95,000,000
Bond Series 2018B (Series 2)	\$ 13,115,495
District Funds (Funds 35, 40, and 86-1)	\$ 41,500,000
District Fund 40 (WHS Field Improvements)	\$ 1,000,000
IT Infrastructure (LAN Project)	\$ 643,875
State Grant (CTEFP <sup>1</sup> - CHS)	\$ 439,400
State Grant (CTEFP <sup>1</sup> - WHS)	\$ 3,000,000
Rebate (IRWD)	\$ 174,591
CalRecycle TDP <sup>2</sup> Grant (WHS Field Improvements)	\$ 56,898
<b>Series 2 Funds</b>	<b>\$ 27,884,505</b>
Bond Series 2018B (Series 2)	\$ 27,884,505
<b>AFAP Funds</b>	<b>\$ 30,000,000</b>

Notes: 1. CTEFP - Career Technical Education Facilities Program | 2. TDP - Tire-Derived Product

# Budget



# BUDGET PROCESS



# POST-BID BUDGET VERSUS FINAL BUDGET



Completed Projects*		Post-Bid Budget	Final Budget	Post-Bid & Final Budget Variance
1	Bonita Canyon ES - Enclose Classrooms	\$ 912,184	\$ 868,451	\$ 43,733
2	College Park ES - Enclose Classrooms	\$ 3,424,255	\$ 3,248,271	\$ 175,984
3	Culverdale ES - Enclose Classrooms	\$ 1,633,772	\$ 1,601,117	\$ 32,655
4	Greentree ES - Enclose Classrooms	\$ 2,042,302	\$ 1,913,892	\$ 128,410
5	Irvine HS - Modernizaton	\$ 7,143,636	\$ 6,922,265	\$ 221,371
6	Lakeside MS - Science Labs	\$ 2,972,572	\$ 2,892,181	\$ 80,391
7	Northwood HS - Field Improvements	\$ 3,815,212	\$ 3,692,908	\$ 122,304
8	Rancho San Joaquin MS - Science Labs	\$ 5,680,277	\$ 5,289,332	\$ 390,945
9	Santiago Hills ES - Enclose Classrooms	\$ 1,498,668	\$ 1,427,186	\$ 71,482
10	South Lake MS - Science Labs	\$ 3,759,011	\$ 3,557,805	\$ 201,206
11	Stone Creek ES - Enclose Classrooms/Expansion	\$ 4,423,481	\$ 4,295,488	\$ 127,993
12	University HS - Modernization	\$ 5,002,422	\$ 4,628,058	\$ 374,364
13	Westwood Basics Interim	\$ 509,966	\$ 411,938	\$ 98,028
<b>TOTALS</b>		<b>\$ 42,817,757</b>	<b>\$ 40,748,892</b>	<b>\$ 2,068,865</b>

\*Represents 13 of the 32 current Measure E projects





# Budget

## Series 1 Projects



# FUND SUMMARY / FORECASTED BUDGET (Series 1)

Adjustment (10/26/2016)		Adjustment (06/05/2018)		Current (04/27/2020)	
Bond Series 1	\$ 95,000,000	Bond Series 1	\$ 95,000,000	Bond Series 1	\$ 95,000,000
IUSD Funds	\$ 29,600,000	IUSD Funds	\$ 29,600,000	IUSD Funds	\$ 29,600,000
IUSD Funds 1st Adj.	\$ 6,800,000	IUSD Funds 1st Adj.	\$ 6,800,000	IUSD Funds 1st Adj.	\$ 6,800,000
<b>FUNDS</b>	<b>\$ 131,400,000</b>	IUSD Funds 2nd Adj.	\$ 5,100,000	IUSD Funds 2nd Adj.	\$ 5,100,000
		IUSD IT Infrastructure	\$ 643,875	IUSD IT Infrastructure	\$ 643,875
		CTE Grant (CHS)	\$ 348,920	CTE Grant (CHS)	\$ 439,400
		Bond Series 2	\$ 13,115,495	Bond Series 2	\$ 13,115,495
		<b>FUNDS Approved</b>	<b>\$ 150,608,290</b>	IRWD Rebate (NHS)	\$ 174,591
				Fund 40 to WHS Field	\$ 1,000,000
				CTE Grant (WHS)	\$ 3,000,000
				TDP Grant (WHS)	\$ 56,898
				<b>FUNDS Available</b>	<b>\$ 154,930,259</b>
				<b>CURRENT BUDGET</b>	<b>\$ 150,836,437</b>
				<b>SURPLUS FUNDS</b>	<b>\$ 4,093,822</b>



# CURRENT PROJECT BUDGETS (Series 1)

✓ <b>Enclose Classrooms (6 schools)</b> Bonita Canyon ES, College Park ES, Culverdale ES, Greentree ES, Santiago Hills ES, Stone Creek ES	\$ 13,354,406
✓ <b>High School Modernizations (2 schools)</b> Irvine HS, University HS	\$ 11,550,323
✓ <b>Expansions (2 schools)</b> Eastshore ES, Creekside HS	\$ 11,164,999
✓ <b>Elementary School Modernizations (4 schools)</b> Brywood ES, Meadow Park ES, Springbrook ES, Westpark ES	\$ 46,360,048
✓ <b>High School Field Improvements (2 schools)</b> Northwood HS, Woodbridge HS	\$ 6,667,008



# CURRENT PROJECT BUDGETS (Series 1)

✓ *-continued-*

✓ <b>Middle School Science Classrooms (5 schools)</b> Lakeside MS, Rancho San Joaquin MS, Sierra Vista MS, South Lake MS, Venado MS	\$ 21,929,077
• <b>New Theater (1 school)</b> Woodbridge HS	\$ 27,910,257
• <b>Music Classroom Buildings (3 schools)</b> ✓ Brywood ES, ✓ Meadow Park ES, Springbrook ES	\$ 9,757,653
• <b>Interim Campuses (2 schools)</b> El Camino, ✓ Westwood Basics	\$ 1,642,666
• <b>Program Costs</b>	\$ 500,000
<hr/>	
<b>TOTAL PROGRAM BUDGET</b>	<b>\$ 150,836,437</b>



# CONSTRUCTION CHANGE ORDERS (Series 1)



## Final Change Order Percentages

School		Original Contract	Final Contract	Change Orders	Change Order %	School		Original Contract	Final Contract	Change Orders	Change Order %
1	Bonita Canyon ES	\$ 687,833	\$ 661,920	\$ (25,913)	-3.77%	12	Lakeside MS	\$ 2,279,702	\$ 2,214,866	\$ (64,836)	-2.84%
2	College Park ES	\$ 1,947,472	\$ 1,997,707	\$ 50,235	2.58%	13	Rancho San Joaquin MS	\$ 4,201,968	\$ 4,102,266	\$ (99,702)	-2.37%
3	Culverdale ES	\$ 1,004,045	\$ 1,020,602	\$ 16,557	1.65%	14	Westpark ES	\$ 7,535,025	\$ 7,612,852	\$ 77,827	1.03%
4	Greentree ES	\$ 1,263,711	\$ 1,240,335	\$ (23,376)	-1.85%	15	Brywood ES - Mod	\$ 8,022,047	\$ 8,634,679	\$ 612,632	7.64%
5	Santiago Hills ES	\$ 1,053,407	\$ 1,050,915	\$ (2,492)	-0.24%	16	Brywood ES - Music	\$ 2,842,214	\$ 2,773,341	\$ (68,873)	-2.42%
6	Stone Creek ES	\$ 3,155,560	\$ 3,113,229	\$ (42,331)	-1.34%	17	Meadow Park ES - Mod	\$ 9,640,387	\$ 9,856,858	\$ 216,471	2.25%
7	Northwood HS	\$ 2,946,419	\$ 3,055,203	\$ 108,784	3.69%	18	Meadow Park ES - Music	\$ 2,889,679	\$ 2,838,289	\$ (51,390)	-1.78%
8	Irvine HS	\$ 4,704,255	\$ 4,843,227	\$ 138,972	2.95%	19	Eastshore ES	\$ 4,522,529	\$ 4,597,990	\$ 75,461	1.67%
9	University HS	\$ 3,533,004	\$ 3,519,126	\$ (13,878)	-0.39%	20	Venado MS	\$ 3,798,615	\$ 3,813,274	\$ 14,659	0.39%
10	Sierra Vista MS	\$ 3,643,560	\$ 3,526,896	\$ (116,664)	-3.20%	21	Creekside HS	\$ 3,681,144	\$ 3,598,072	\$ (83,072)	-2.26%
11	South Lake MS	\$ 2,753,376	\$ 2,688,937	\$ (64,439)	-2.34%	<b>TOTALS</b>		<b>\$76,105,952</b>	<b>\$76,760,584</b>	<b>\$ 654,632</b>	<b>0.86%</b>



# Budget

## Series 2 Projects



# FUND SUMMARY / FORECASTED BUDGET (Series 2)

- Series 2 Projects

- Group 1 (Bonita Canyon ES and Turtle Rock ES) Bids received 5/14/2020
- Group 1 Post-Bid Budgets will be complete late June 2020
- Group 2 (Northwood ES and University Park ES) Bids due late 2020 / early 2021

Initial Budget (01/09/2019)	
Bond Series 2	\$ 41,000,000
Funds Transferred to Series 1	\$ (13,115,495)
IUSD Funds	\$ -
<b>FUNDS</b>	<b>\$ 27,884,505</b>
<b>CURRENT BUDGET</b>	<b>\$ 25,600,730</b>
<b>SURPLUS</b>	<b>\$ 2,283,775</b>

Current Initial Budget (07/22/2019)	
Bond Series 2	\$ 41,000,000
Funds Transferred to Series 1	\$ (13,115,495)
IUSD Funds	\$ -
<b>FUNDS</b>	<b>\$ 27,884,505</b>
<b>CURRENT BUDGET</b>	<b>\$ 29,203,295</b>
<b>DEFICIT</b>	<b>\$ (1,318,790)</b>
<b>SURPLUS (Series 1)</b>	<b>\$ 4,093,822</b>
<b>SURPLUS</b>	<b>\$ 2,775,032</b>





# Budget Bond Series Overview





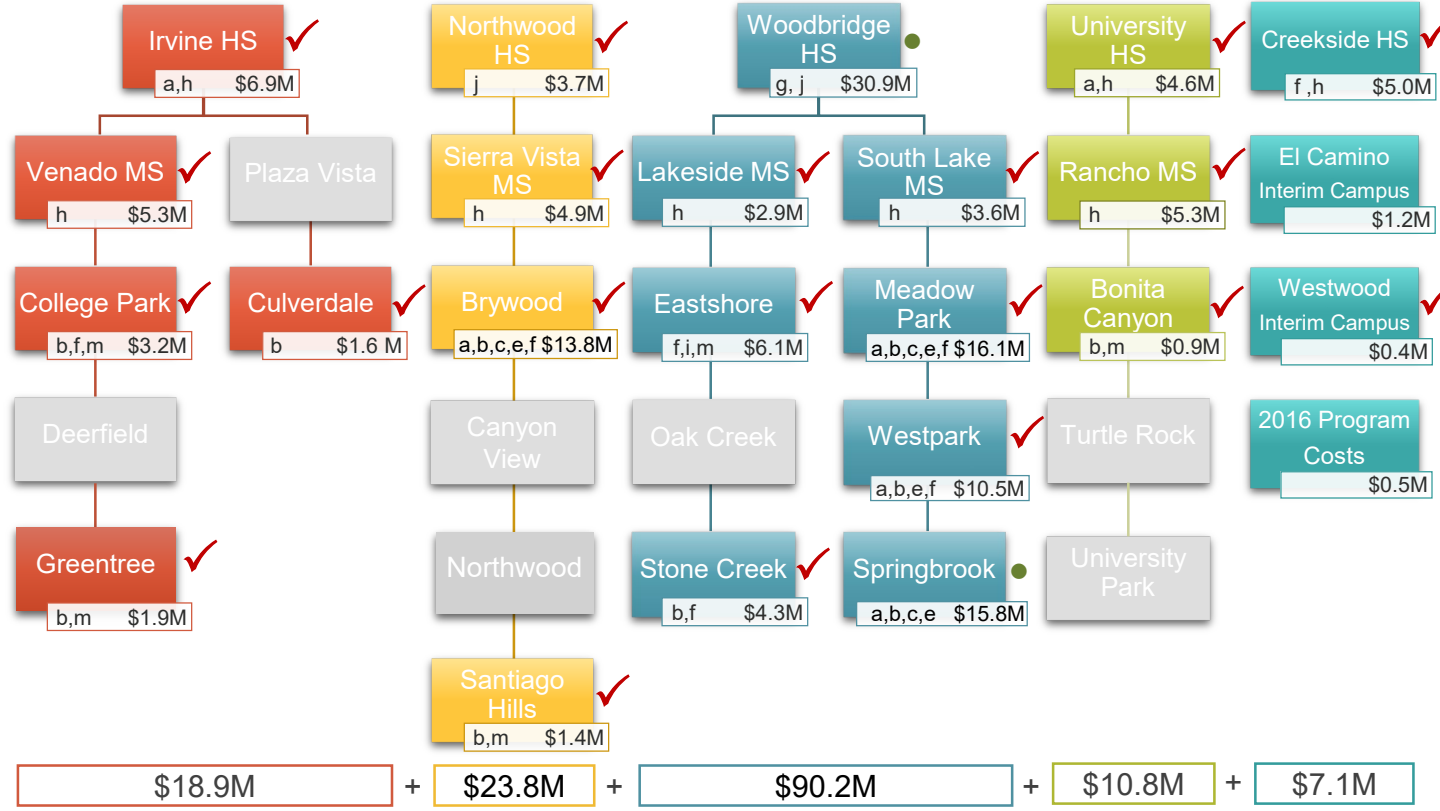


## PROJECT TYPES

- a. Modernize facilities over 25 yrs of age
- b. Enclose open classrooms
- c. Construct Music Classrooms
- d. Construct Multipurpose Room
- e. Construct/Upgrade Food Service
- f. Construct Career Tech and Innovation/Design Labs
- g. Construct Visual and Performing Arts, Media Arts Elective Labs and New/Upgrade Theaters
- h. Construct/upgrade science labs and Elective Spaces
- i. Construct/Upgrade Kinder Classroom
- j. Construct all weather track and field
- k. Construct Classrooms to replace portables
- l. Construct Practice Gym
- m. Construct/Upgrade Site Specific Support Facilities

- Under construction
- In design
- ◆ Waiting for Bond sale

Series 1 Funds	\$154.9M
Series 1 Costs	\$150.8M
<b>Surplus</b>	<b>\$4.1M</b>



NOTE: Schools organized by region, not by feeder schools

# Measure E Series 1 Projects and Costs

Bond Sale in 2016A



## PROJECT TYPES

- Modernize facilities over 25 years of age
- Enclose open classrooms
- Construct Music Classrooms
- Construct Multipurpose Room
- Construct/Upgrade Food Service
- Construct Career Tech and Innovation/Design Labs
- Construct Visual and Performing Arts, Media Arts Elective Labs and New/Upgrade Theaters
- Construct/upgrade science labs and Elective Spaces
- Construct/Upgrade Kinder Classrooms
- Construct all weather track and field
- Construct Classrooms to replace portables
- Construct Practice Gym
- Construct/Upgrade Site Specific Support Facilities

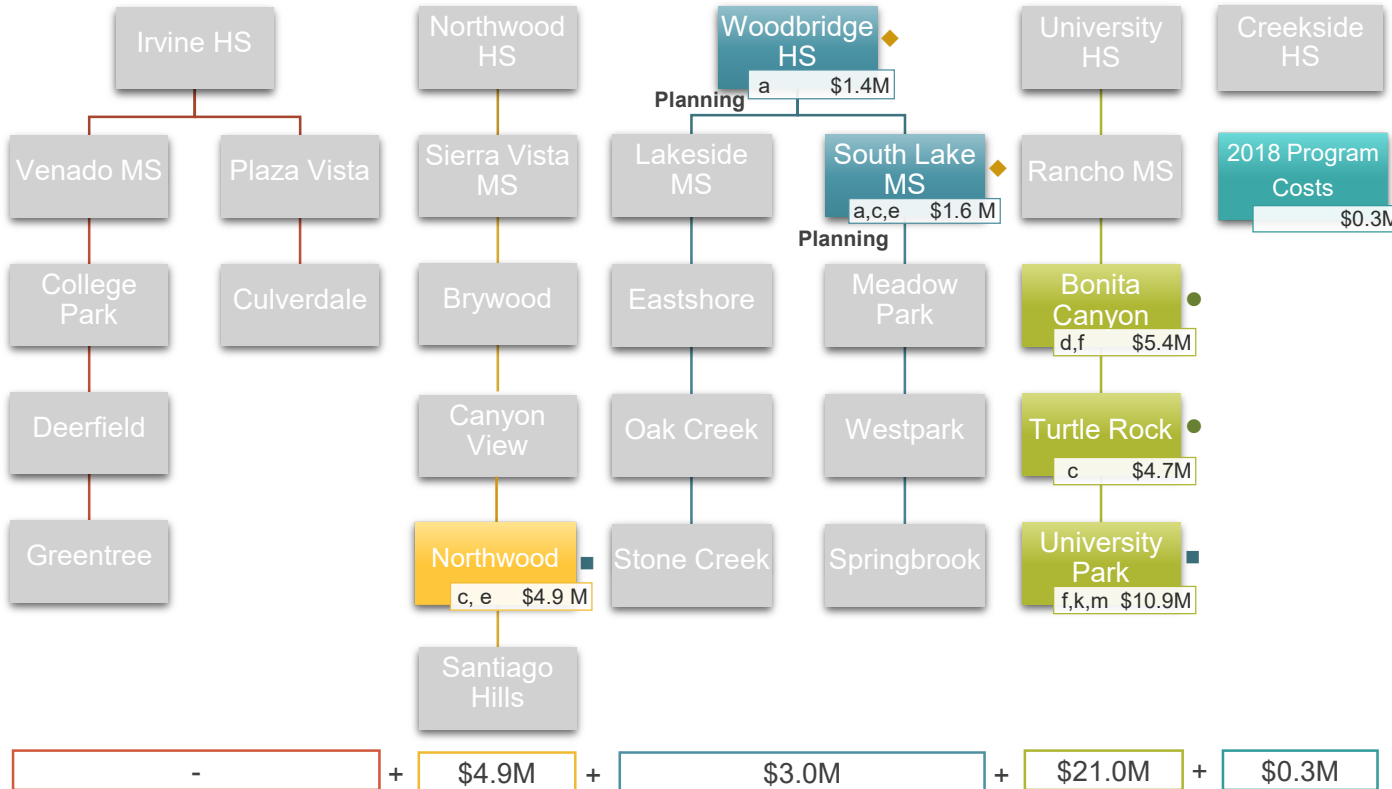
- Under construction
- In design
- ◆ Waiting for Bond sale

Series 2 Funds	\$27.9M
Series 2 Costs	\$29.2M

**Deficit**     **(\$1.3M)**

Surplus (Series 1)     \$4.1M

Surplus     \$2.8M



NOTE: Schools organized by region, not by feeder schools

# Measure E Series 2 Projects and Costs

Bond Sale in 2018B





## PROJECT TYPES

- Modernize facilities over 25 years of age
  - Enclose open classrooms
  - Construct Music Classrooms
  - Construct Multipurpose Room
  - Construct/Upgrade Food Service
  - Construct Career Tech and Innovation/Design Labs
  - Construct Visual and Performing Arts, Media Arts Elective Labs and New/Upgrade Theaters
  - Construct/upgrade science labs and Elective Spaces
  - Construct/Upgrade Kinder Classrooms
  - Construct all weather track and field
  - Construct Classrooms to replace portables
  - Construct Practice Gym
  - Construct/Upgrade Site Specific Support Facilities
- Under construction
  - In design
  - ◆ Waiting for Bond sale

AFAP Funds	\$30.0M
AFAP Costs	\$26.5M
<b>Surplus</b>	<b>\$3.5M</b>

Creekside HS

AFAP Program Costs

\$0.3M

University HS

Rancho MS

Bonita Canyon

Turtle Rock

University Park

Woodbridge HS

Lakeside MS

South Lake MS

Meadow Park

Westpark

Springbrook

Northwood HS

Sierra Vista MS

Brywood

Eastshore

Oak Creek

Stone Creek

Northwood HS

Sierra Vista MS

Brywood

Canyon View

Northwood

Santiago Hills

Irvine HS

Planning

Venado MS

College Park

Deerfield

Greentree

Plaza Vista

Culverdale

\$16.6M + \$5.0M + \$4.6M + - + \$0.3M =

NOTE: Schools organized by region, not by feeder schools

# Measure E Projects and Costs

AFAP Funds 2019

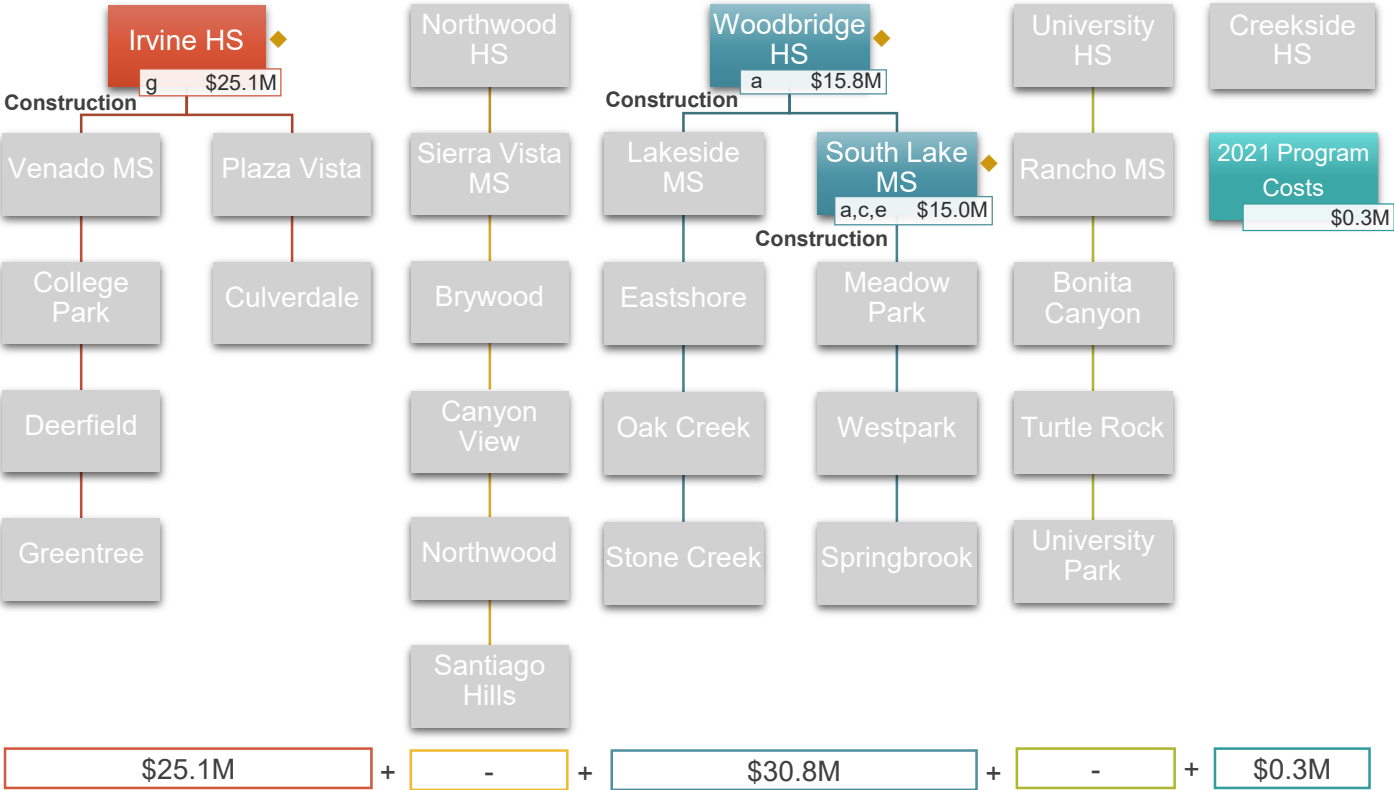


## PROJECT TYPES

- Modernize facilities over 25 years of age
- Enclose open classrooms
- Construct Music Classrooms
- Construct Multipurpose Room
- Construct/Upgrade Food Service
- Construct Career Tech and Innovation/Design Labs
- Construct Visual and Performing Arts, Media Arts Elective Labs and New/Upgrade Theaters
- Construct/upgrade science labs and Elective Spaces
- Construct/Upgrade Kinder Classrooms
- Construct all weather track and field
- Construct Classrooms to replace portables
- Construct Practice Gym
- Construct/Upgrade Site Specific Support Facilities

- Under construction
- In design
- ◆ Waiting for Bond sale

Series 3 Funds	\$54.3M
Series 3 Costs	\$56.2M
<b>Deficit</b>	<b>&lt;\$1.9M&gt;</b>



NOTE: Schools organized by region, not by feeder schools

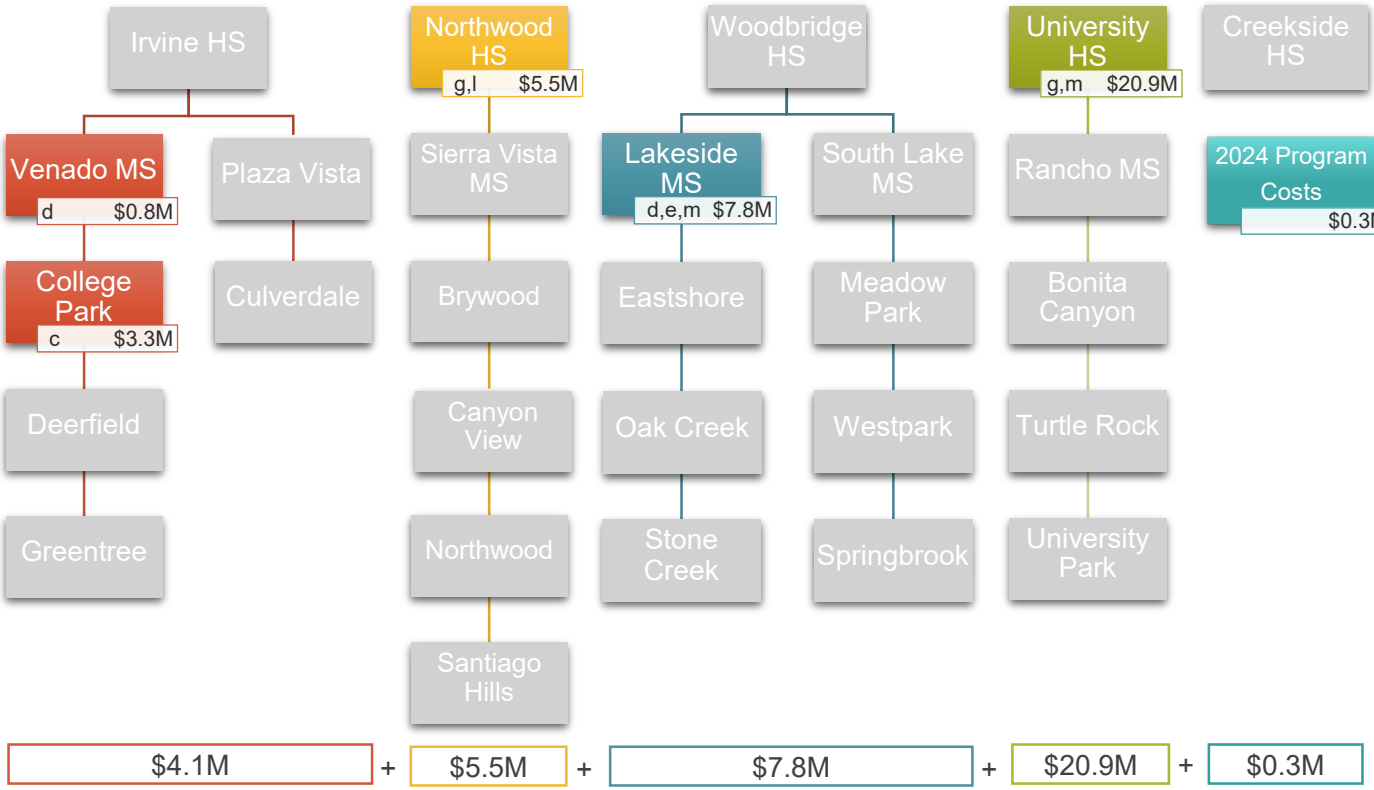
# Measure E Series 3 Projects and Costs

Pending Bond Sale Projected 2021



## PROJECT TYPES

- a. Modernize facilities over 25 years of age
- b. Enclose open classrooms
- c. Construct Music Classrooms
- d. Upgrade/Construct Multipurpose Room
- e. Construct/Upgrade Food Service
- f. Construct Career Tech and Innovation/Design Labs
- g. Construct Visual and Performing Arts, Media Arts Elective Labs and New/Upgrade Theaters
- h. Construct/upgrade science labs and Elective Spaces
- i. Construct/Upgrade Kinder Classrooms
- j. Construct all weather track and field
- k. Construct Classrooms to replace portables
- l. Construct Practice Gym at NHS \$3.9 M deferred at Board Meeting June 5, 2018
- m. Construct/Upgrade Site Specific Support Facilities



NOTE: Schools organized by region, not by feeder schools

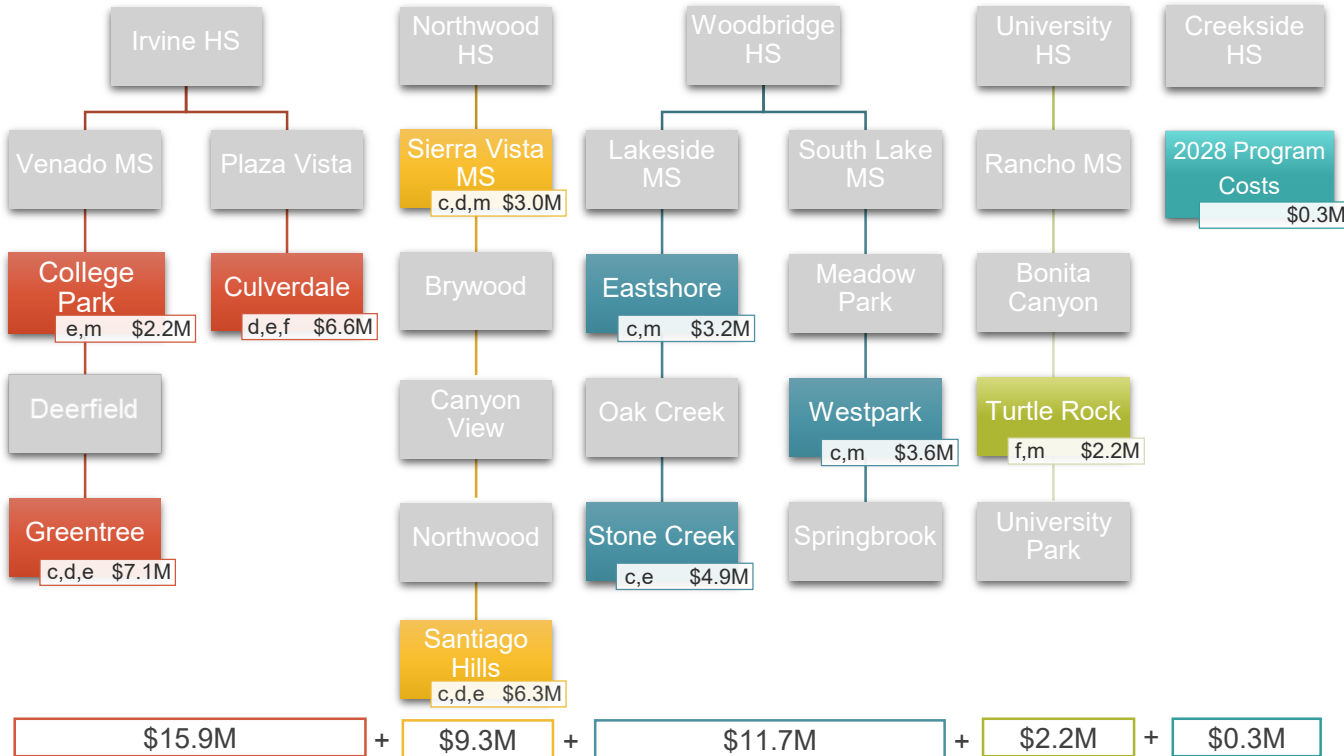
# Measure E Series **4** Projects and Costs

Pending Bond Sale Projected 2024



## PROJECT TYPES

- Modernize facilities over 25 yrs of age
- Enclose open classrooms
- Construct Music Classrooms
- Construct/Upgrade Multipurpose Room
- Construct/Upgrade Food Service
- Construct Career Tech and Innovation/Design Labs
- Construct Visual and Performing Arts, Media Arts Elective Labs and New/Upgrade Theaters
- Construct/upgrade science labs and Elective Spaces
- Construct/Upgrade Kinder Classrooms
- Construct all weather track and field
- Construct Classrooms to replace portables
- Construct Practice Gym
- Construct/Upgrade Site Specific Support Facilities CHS Project \$1.2 M deferred at Board Meeting June 5, 2018



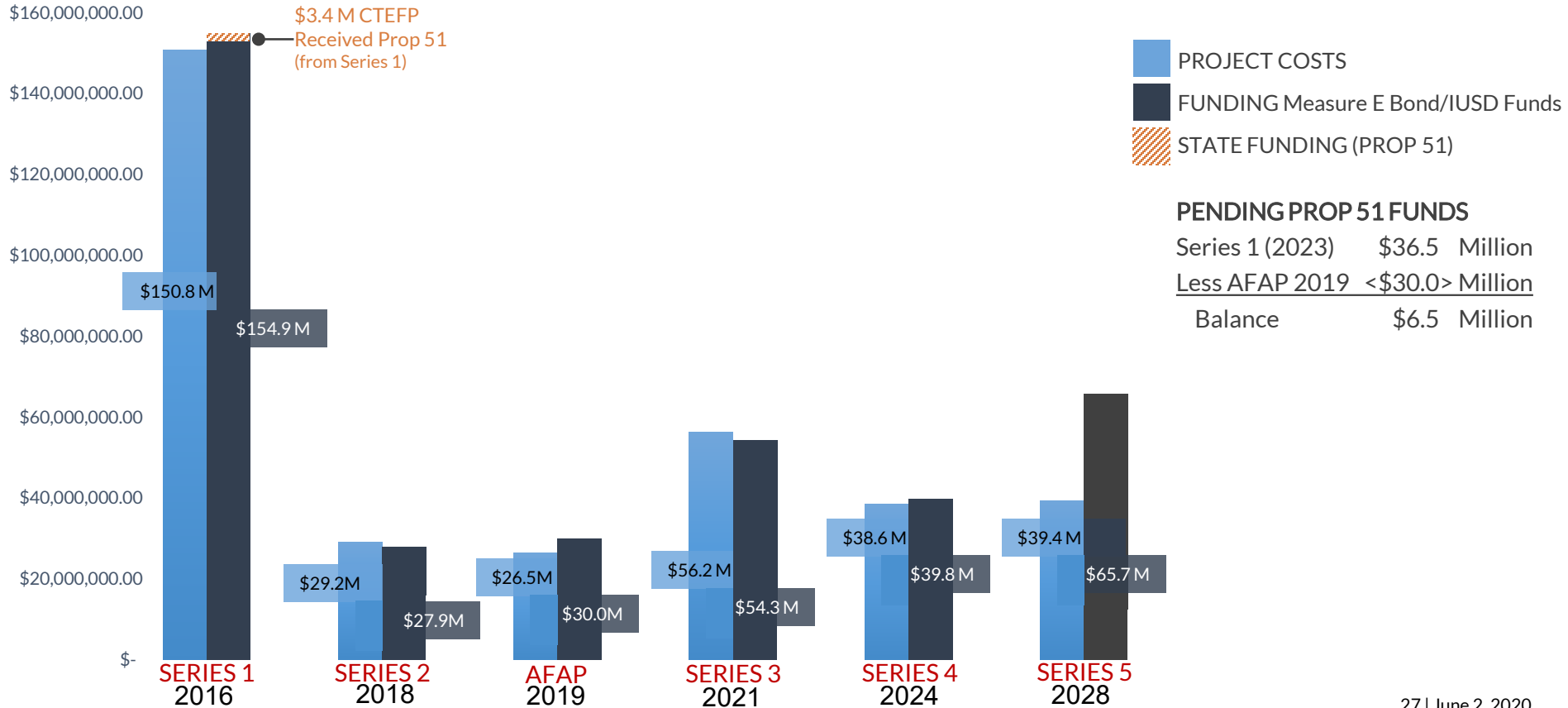
NOTE: Schools organized by region, not by feeder schools

Series 5 Funds	\$65.7M
Series 5 Costs	\$39.4M
<b>Surplus</b>	<b>\$26.3M</b>

# Measure E Series **5** Projects and Costs

Pending Bond Sale Projected 2028

# MEASURE E BY SERIES: PROJECT COST VS FUNDING



## PENDING PROP 51 FUNDS

Series 1 (2023)	\$36.5	Million
Less AFAP 2019 <\$30.0>		Million
<u>Balance</u>	\$6.5	Million

# State Funding





# OFFICE OF PUBLIC SCHOOL CONSTRUCTION: LISTS DEFINED

## Step 1a: "Acknowledged" List

*When no State Funding is available*

- Project applications submitted beyond the Proposition 51 Bond Authority
- Subject to IUSD Board Resolution acknowledging exhaustion of funds
- *Waiting for future State Bond (2020/2022)*

**Series 1 has 3 projects on this list totaling \$837,116**

## Step 1b: "Workload" List

*When State Funding is available*

- Project applications submitted to OPSC, waiting for staff review
- *Anticipate funding under Proposition 51*

**Series 1 has 21 projects on this list totaling \$35,214,276**



# OFFICE OF PUBLIC SCHOOL CONSTRUCTION: LISTS DEFINED

## Step 2: “Unfunded (Lack of AB 55)” List

- Project applications have been fully reviewed by OPSC staff
- Subject to bi-annual Priority Funding Letter
- *Project waiting for State Bond sale (Fall/Spring)*

Series 1 has 2 projects on this list totaling \$1,312,593

## Step 3: “Apportioned” List

- Project applications that were previously on the Unfunded (Lack of AB 55) list
- Submitted bi-annual Priority Funding Letter
- Shovel-Ready within 90 days of moving to Apportioned list
- *Ready for Fund Release request*

Series 1 has 0 projects on this list



# STATE FUNDING – MEASURE E PROJECTS



## STEP 1A: ACKNOWLEDGED LIST

Site Name	Estimated Funding
Bonita Canyon ES (Series I: MOD)	\$152,715
Greentree ES (Series I: MOD)	\$249,055
Lakeside MS (Series I: MOD)	\$435,346
<b>Total State Funding Applications</b>	<b>\$837,116</b>

## STEP 2: OPSC UNFUNDED LIST

Site Name	Estimated Funding
College Park ES (Series 1: MOD)	\$527,914
Culverdale ES (Series 1: MOD)	\$784,679
<b>Total State Funding Applications</b>	<b>\$1,312,593</b>

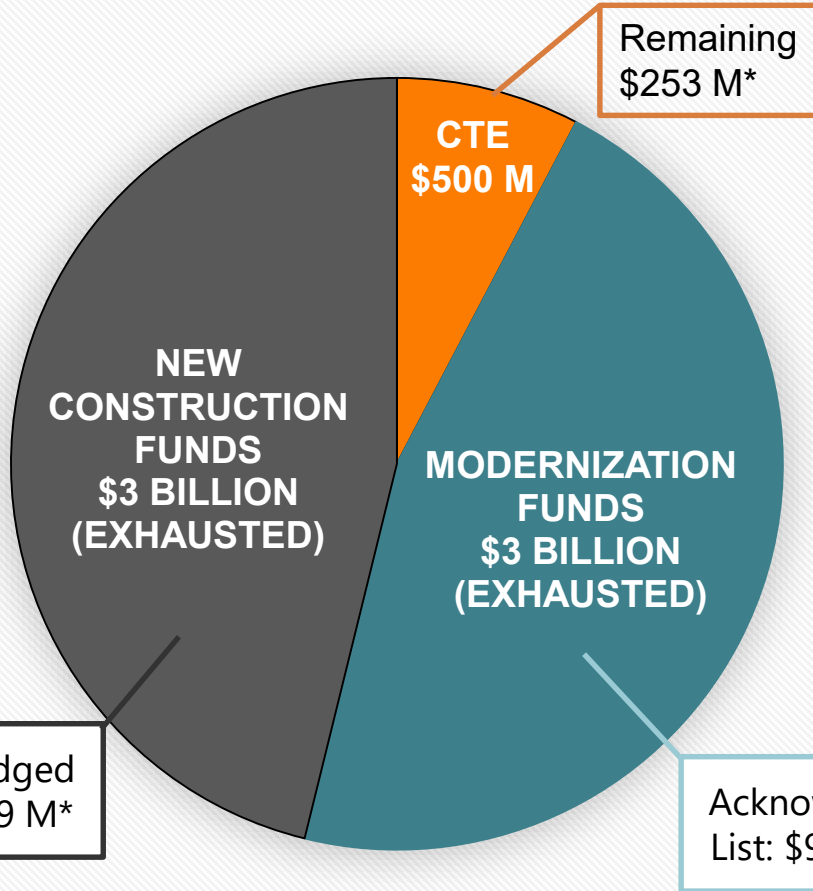
## STATE FUNDED PROJECTS (Prop. 51)

Site Name	Amount Received
Creekside High School (Series 1 CTEFP: Construction Technology)	\$439,400
Woodbridge High School (Series 1 CTEFP: Performing Arts Center)	\$3,000,000
<b>Total State Funded Applications</b>	<b>\$3,439,400</b>

## STEP 1B: OPSC WORKLOAD LIST

Site Name	Estimated Funding
Santiago Hills ES (Series 1: MOD)	\$335,448
Stone Creek ES (Series 1: MOD)	\$1,411,210
Stone Creek ES (Series 1: NC)	\$681,602
Irvine HS (Series 1: MOD)	\$3,874,257
University HS (Series 1: MOD)	\$654,092
Creekside HS (Series 1: NC)	\$1,579,717
Sierra Vista MS (Series 1: NC)	\$1,572,100
South Lake MS (Series 1: NC)	\$870,227
Eastshore ES (Series 1: MOD)	\$694,305
Springbrook ES (Series 1: MOD)	\$3,097,577
Westpark ES (Series 1: MOD)	\$3,415,758
Eastshore ES (Series 1: NC)	\$835,854
Venado MS (Series 1: NC)	\$2,231,969
Rancho San Joaquin MS (Series 1: MOD)	\$543,617
Rancho San Joaquin MS (Series 1: NC)	\$1,108,967
Brywood ES (Series 1: MOD)	\$2,870,668
Woodbridge HS (Series 1: NC)	\$3,041,419
Springbrook ES (Series 1: NC)	\$1,626,156
Meadow Park ES (Series 1: NC)	\$1,149,109
Brywood ES (Series 1: NC)	\$1,094,082
Meadow Park ES (Series 1: MOD)	\$2,526,142
<b>Total State Funding Applications</b>	<b>\$35,214,276</b>

# STATE SCHOOL FACILITY PROGRAM – PROPOSITION 51



APPROVED BY CALIFORNIA VOTERS  
NOVEMBER 8, 2016

OTHER PROP 51	
	• \$500.0M CHARTER SCHOOLS
	• \$2.0B COMMUNITY COLLEGE

Future State Bond:

- Proposition 13 did not pass 3/3/2020
- to be determined

Acknowledged  
List: \$686.9 M\*

Acknowledged  
List: \$971.0 M\*



# Master Schedule



# MASTER SCHEDULE (Series 1, Series 2, AFAP)



2020

2021

2022

## Woodbridge HS – Performing Arts Center

**SERIES 1**

**Construction**

Summer 2020

## Springbrook ES – Modernization / Music Classroom

**Construction**

Summer 2020

## Woodbridge HS – Field Improvements

Spring 2020

## Bonita Canyon ES and Turtle Rock ES

**SERIES 2**

Bid

**Construction**

Summer 2021

## Northwood ES and University Park ES

Design / DSA

Bid

**Construction**

Summer 2022

## South Lake MS and Woodbridge HS

DSA approved, waiting on Series 3 Bond Sale

## Canyon View ES, Deerfield ES, Oak Creek ES and Plaza Vista School

**AFAP**

Design / DSA

Bid

**Construction**

Summer 2022

## Irvine HS

Design / DSA

Once approved by DSA, wait on Series 3 Bond Sale

# COMPLETED PROJECTS (Series 1)

## 2017 (4 sites)

- Bonita Canyon ES
- Culverdale ES
- Greentree ES
- Santiago Hills ES

## 2018 (6 sites)

- College Park ES
- Stone Creek ES
- Lakeside MS
- Irvine HS
- Northwood HS
- University HS

## 2019 (9 sites)

- Brywood ES
- Eastshore ES
- Meadow Park ES
- Westpark ES
- Rancho San Joaquin MS
- Sierra Vista MS
- South Lake MS
- Venado MS
- Creekside HS

## 2020 (2 sites)

- Woodbridge HS (Field Improvements)
- *Springbrook ES\**
- *Woodbridge HS (PAC)\**

\* Under construction, complete summer 2020



# Projects In Design

Augmented Funds to Accelerate Projects (AFAP)  
and  
Series 2 Projects







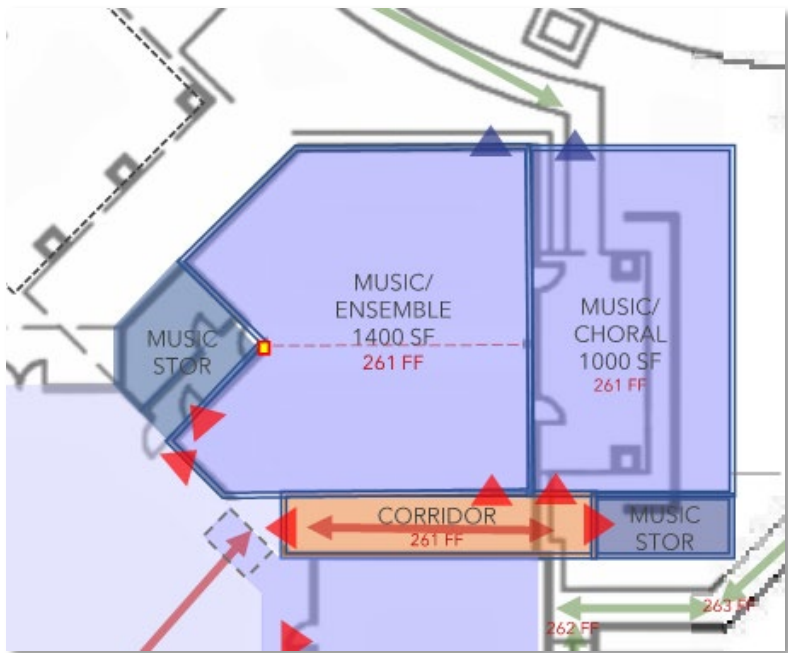
# Projects In Design

## Augmented Funds to Accelerate Projects (AFAP)

- Canyon View ES
- Oak Creek ES
- Deerfield ES
- Plaza Vista School
- Irvine HS



# CANYON VIEW ES (Music/Innovation and Design Labs)



Music Classroom Expansion – Plan View



Interior Renovations – Plan View

# CANYON VIEW ES (Music Classroom Expansion)



Music Classroom Expansion – Front View



Music Classroom Expansion – Back View

# CANYON VIEW ES (Innovation Lab and Design Lab)



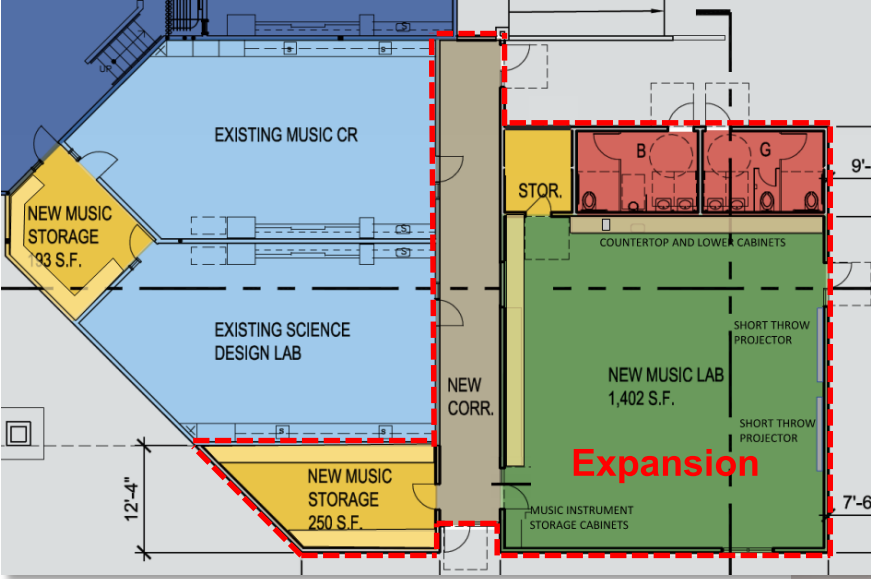
Innovation Lab (left) and Design Lab (right)

Design and Innovation Labs (left) / Conf. Room (right)





# OAK CREEK ES (New Music Classroom)



Music Classroom Expansion - Plan View

New Music Lab - Interior



# OAK CREEK ES (New Music Classroom)



Music Classroom Expansion – Front View

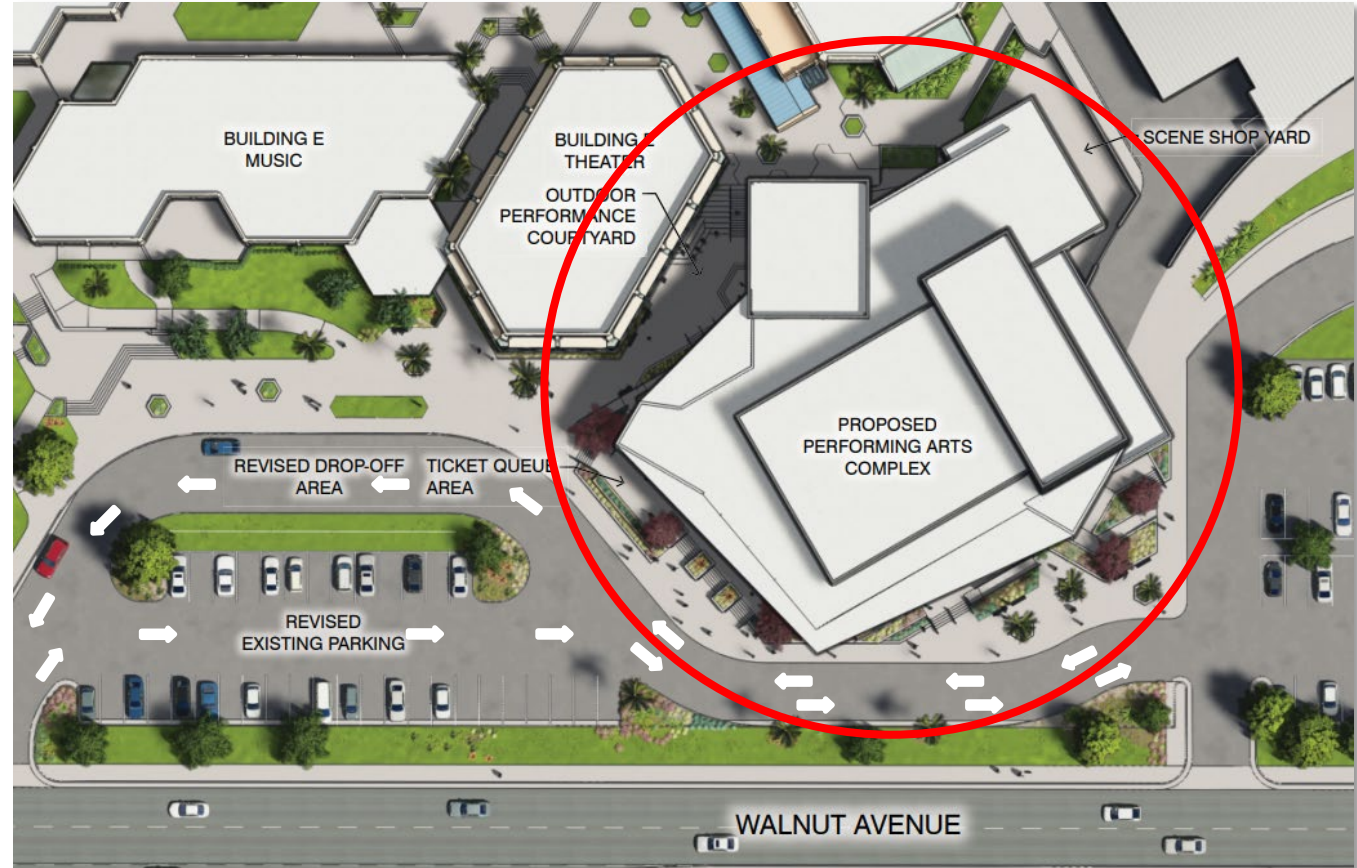


Music Classroom Expansion - Back View



## Feasibility Study

- Proposed placement of new Performing Arts Complex
- Realignment of drive aisles
- Modification of parking







## Feasibility Study

- Proposed placement of new Performing Arts Complex
- Realignment of drive aisles
- Building massing





# DEERFIELD ES (New Music Classroom)

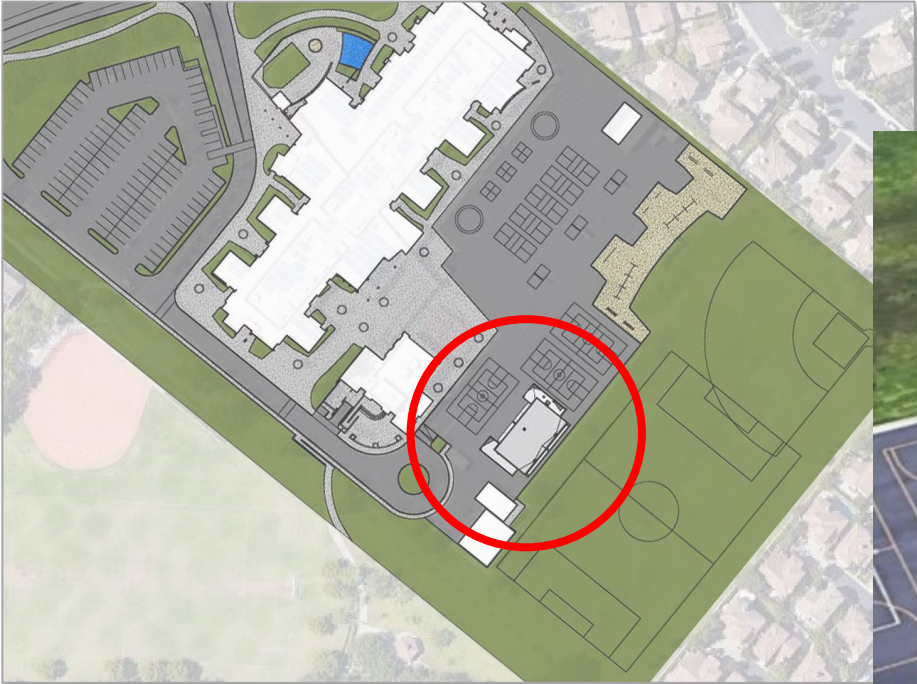


Site Overview



New Music Classroom Building

# PLAZA VISTA SCHOOL (New Music Classroom)



Site Overview



New Music Classroom Building

# Projects In Design

## Series 2 Projects

- University Park ES
- Northwood ES

DSA APPROVED

- South Lake MS
- Woodbridge HS

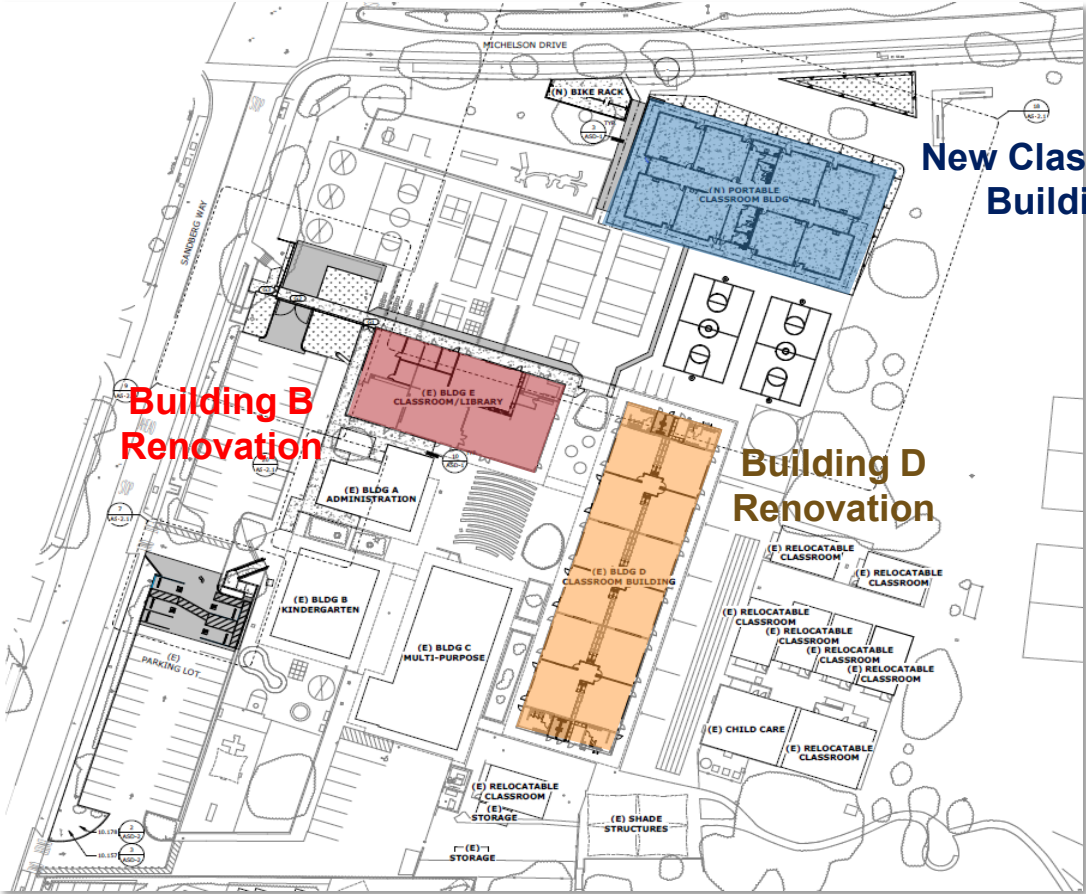




# UNIVERSITY PARK ES (New Classroom Building/Renovation)



## Site Overview



**New Classroom Building**

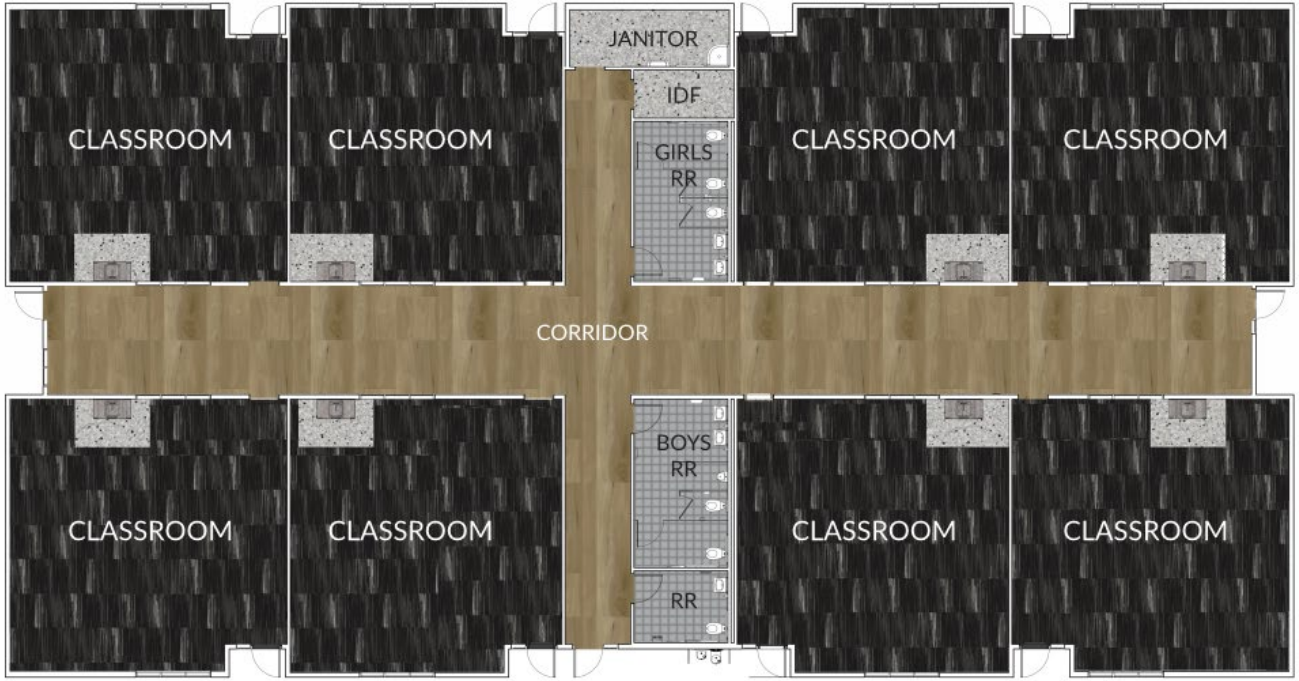
**Building B Renovation**

**Building D Renovation**

# UNIVERSITY PARK ES (New Classroom Building)



Plan view



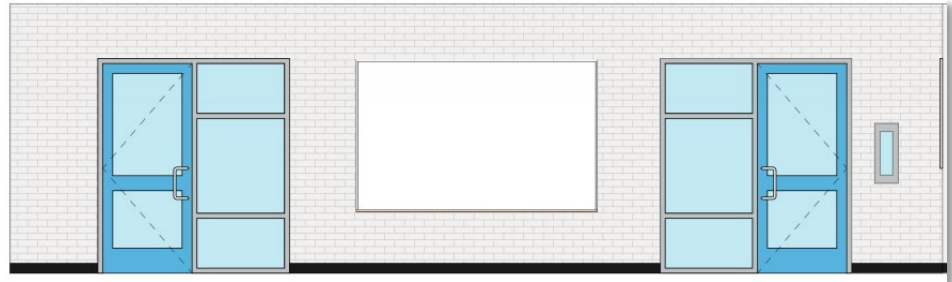
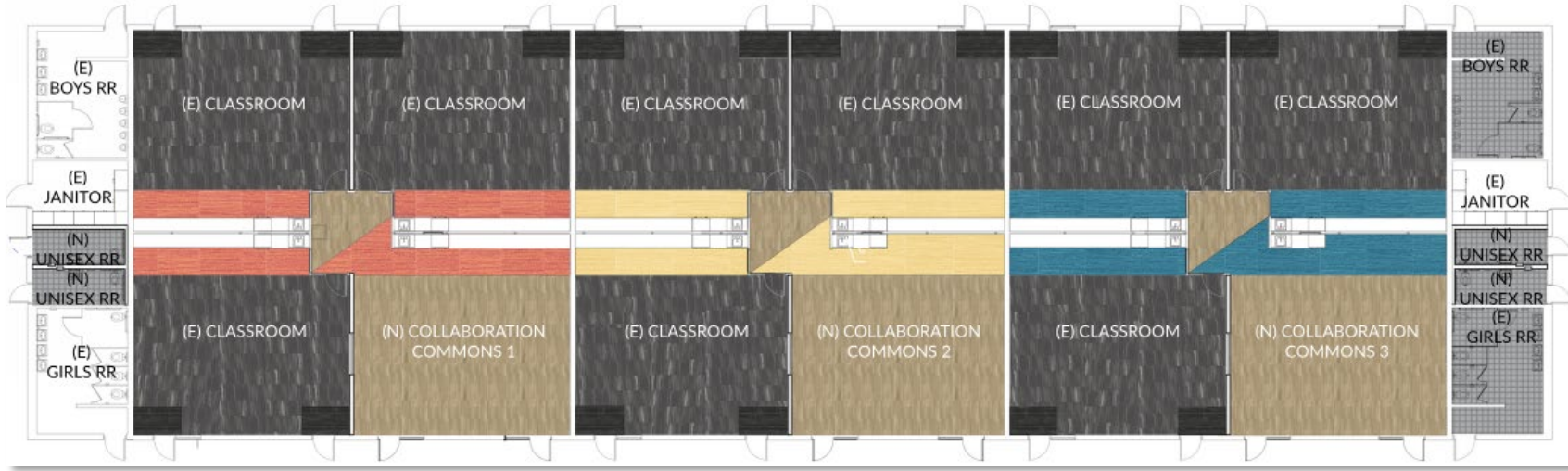
Elevation view



# UNIVERSITY PARK ES (Building D Collaboration Spaces)



Plan View

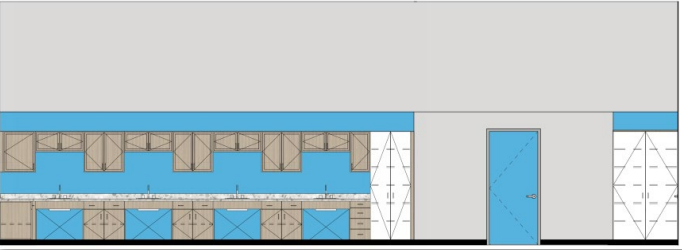
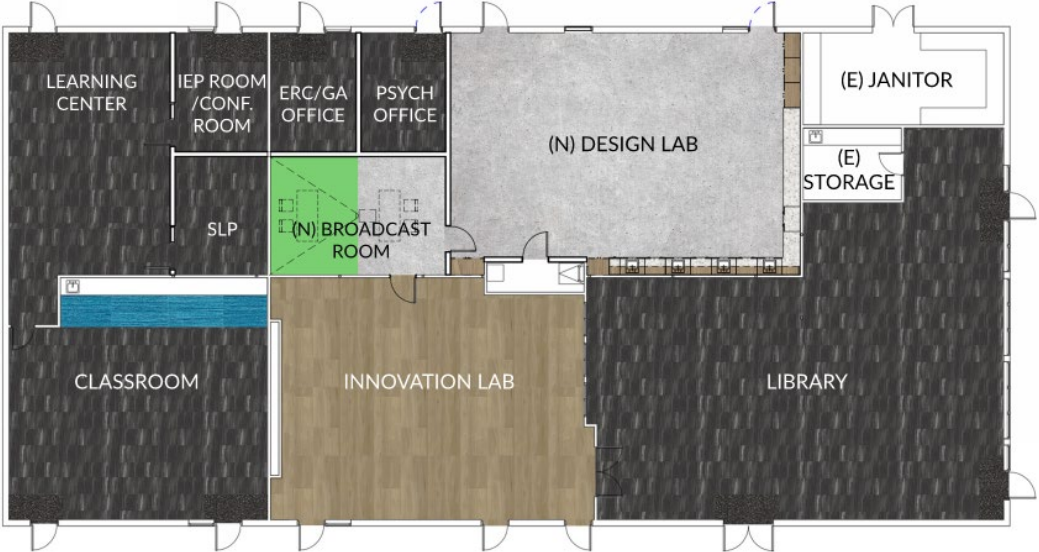


Interior Elevations

# UNIVERSITY PARK ES (Building B Design Lab)



Plan View



Interior Elevations



# NORTHWOOD ES (Campus Improvements)



**MAIN BUILDING**

Expanded Nutrition Services

New Relocatable Classroom Buildings (5)

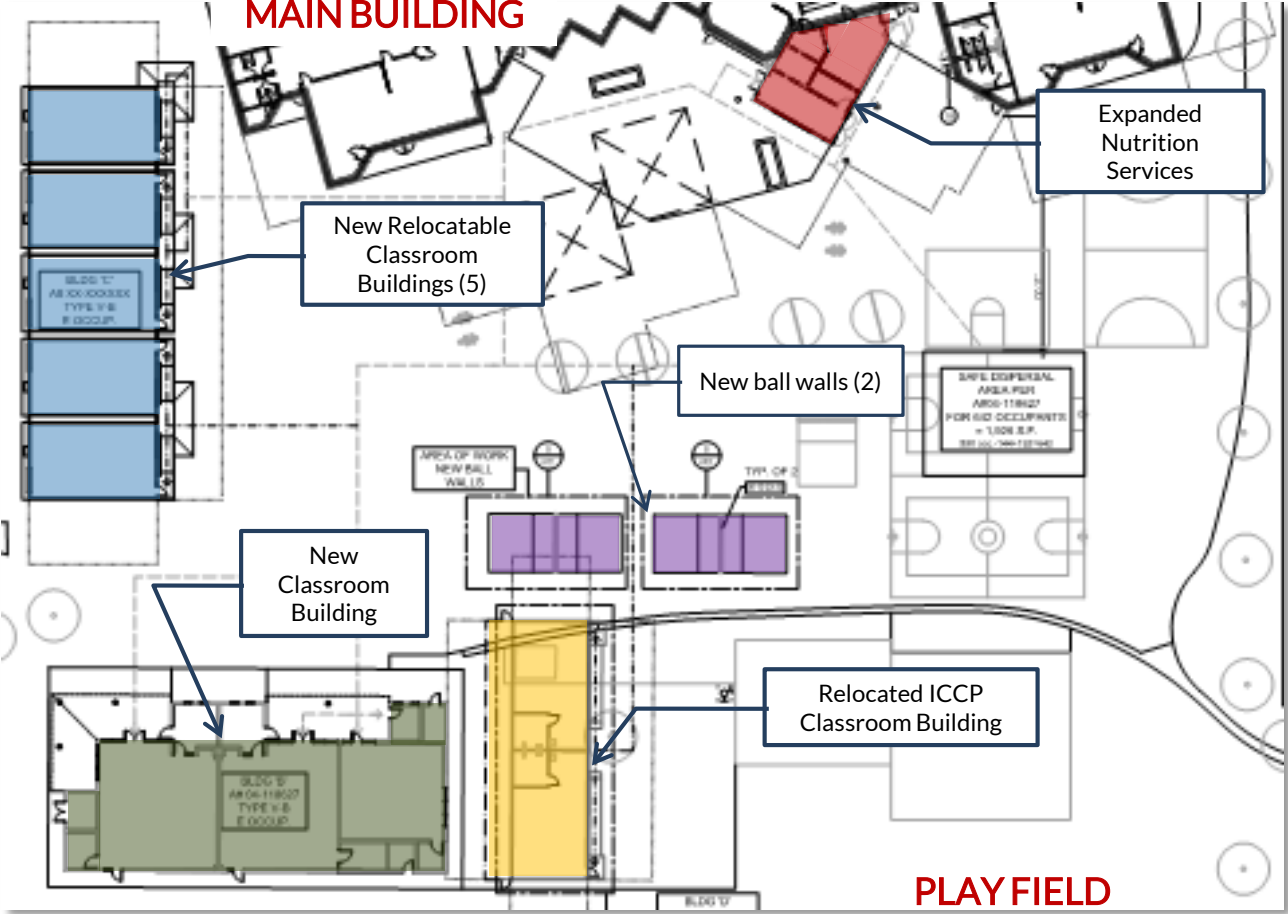
New ball walls (2)

New Classroom Building

Relocated ICCP Classroom Building

**PLAYFIELD**

Site Overview





# NORTHWOOD ES (New Classroom Building)\*



Music Classroom Building - Exterior

Choral Room - Interior



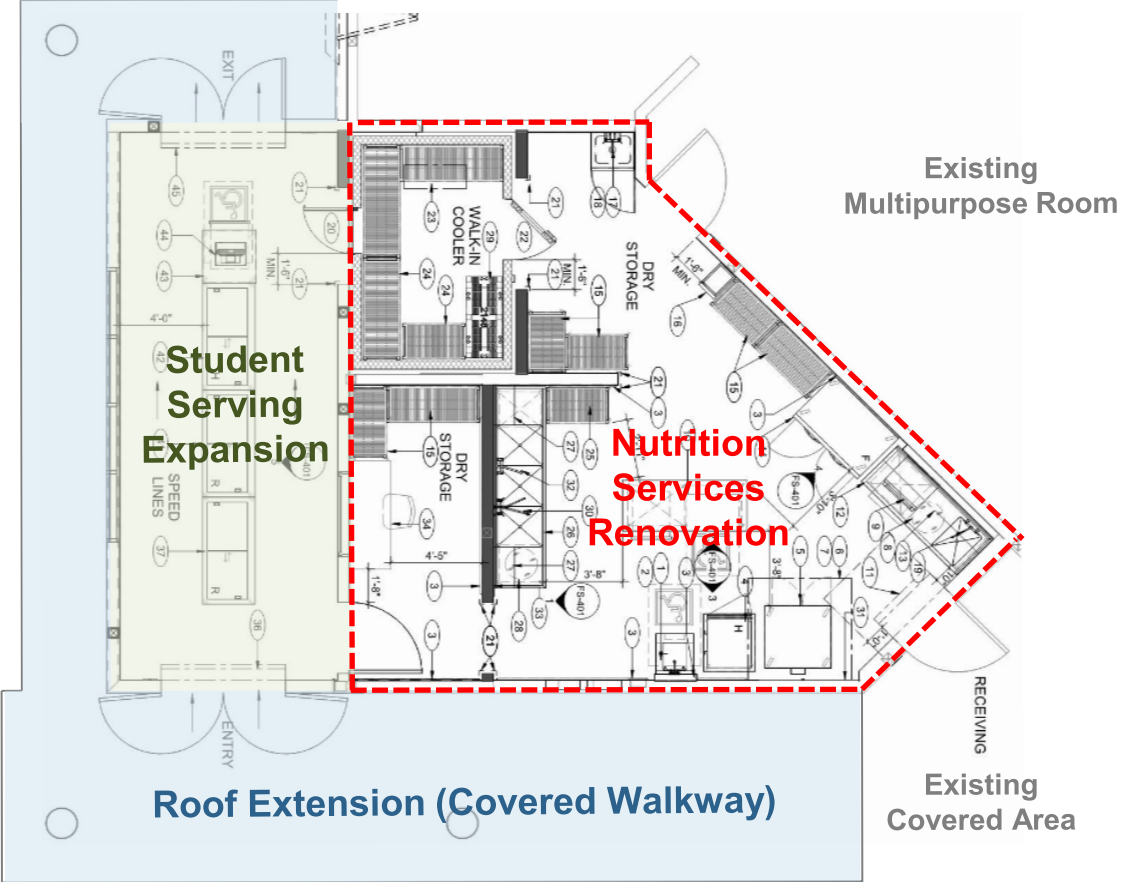
Flexible Choral Environment

- Similar design as Springbrook ES new classroom building

# NORTHWOOD ES (Expanded Nutrition Services)



Partial plan view



# Projects Under Construction

Series 2 Projects  
and  
Series 1 Projects



# Projects Under Construction

## Series 2 Projects

- Bonita Canyon ES
- Turtle Rock ES



# BONITA CANYON ES (New Multipurpose Building)



Multipurpose Building - Exterior



Multipurpose Room - Interior



# BONITA CANYON ES (New Design Lab)



Design lab



Design lab

# TURTLE ROCK ES (New Classroom Building)\*



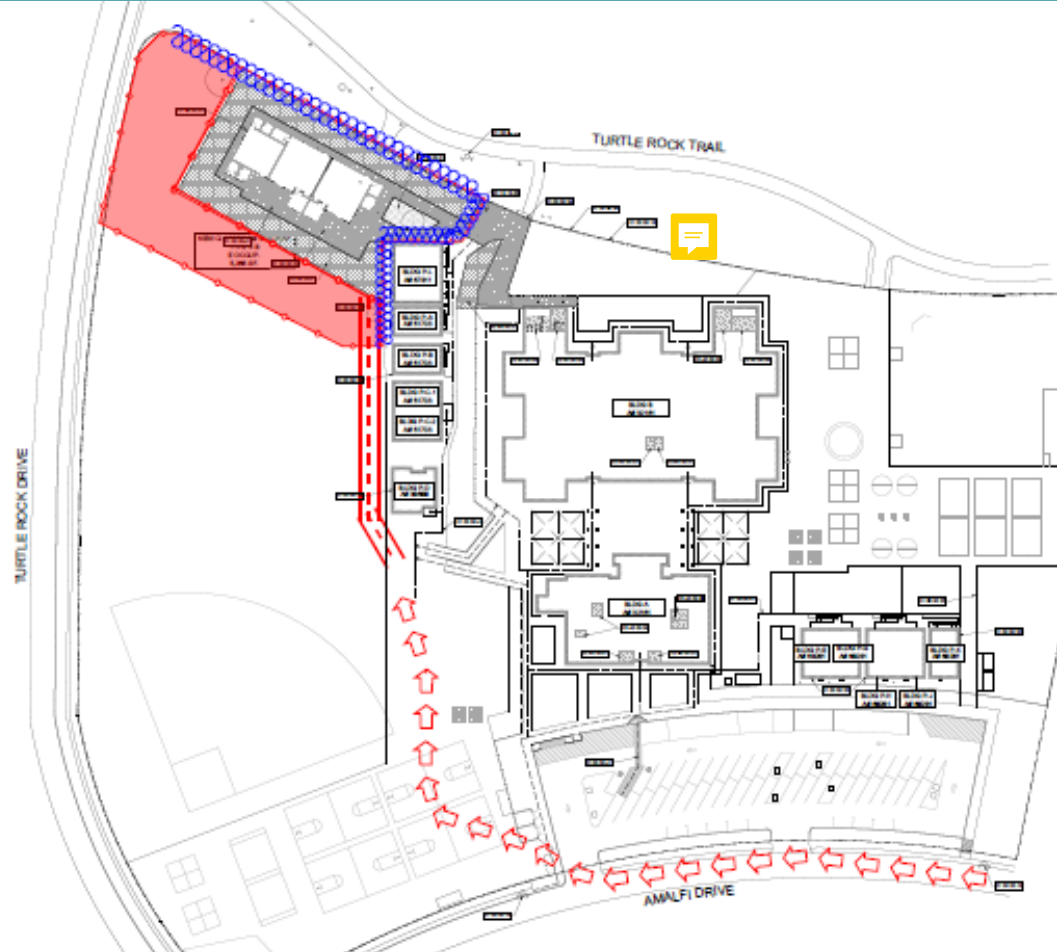
Music Classroom Building - Exterior

Music Classroom - Interior







- Similar design as Springbrook ES new classroom building

# TURTLE ROCK ES (Site Logistics)



### Legend:

-  Construction Staging Area
-  Vehicle Traffic
-  Temporary Fencing
-  Sound Blankets



# Projects Under Construction

## Series 1 Projects

- Springbrook ES
- Woodbridge HS



# SPRINGBROOK ES (Modernization)



Classroom (typical)



Collaboration Space



Corridor to Innovation (right) and Kindergarten (beyond)

Innovation Lab



# SPRINGBROOK ES (New Classroom Building)



Music Classroom Building

Music Classroom Building





Music Classrooms

Music Classroom





# WOODBIDGE HS (Performing Arts Complex)



Main Entrance, Ticket Booth in Foreground

Main Entrance





First Floor Lobby

Second Floor Seating (stage in foreground)





# WOODBIDGE HS (Field Improvements)



Mid-Field (towards Legacy Creekside)

Visitor Team Side (towards Alton Parkway)





# WOODBIDGE HS (Field Improvements)



Visitor Team Side (towards school)

Home Team Side (towards Alton Parkway)





IRVINE UNIFIED  
SCHOOL DISTRICT



**LEARNING  
ENVIRONMENT  
ENHANCEMENT  
PROJECTS (LEEP)  
UPDATE**



# LEARNING ENVIRONMENT ENHANCEMENT PROJECTS UPDATE

## Funding

- Approximately \$2.0 million has been set aside from a facilities budget to provide the improvements over the 2020 summer

## Improvement Types

- Create Outdoor Learning Areas
- Create Outdoor Collaboration Area w/Shade Structure
- Enhance Outdoor Courtyard Learning Area
- Create Indoor Collaboration Area within Commons
- Improve Multipurpose Rooms
- Enhance Learning Support Spaces
- Incorporate Flexible Furniture
- Create Learning Gardens

## Schedule

- Improvements are scheduled to start in early June and complete by late August
- Improvements and budgets are being finalized

CURRENT  
PROJECTS IN  
PLANNING



# LEARNING ENVIRONMENT ENHANCEMENT PROJECTS

## Outdoor Collaboration Area w/ Shade Structure

Current



### Cypress Village Elementary School

- Add shade for outside collaboration area
- Add furniture

Enhancement



# LEARNING ENVIRONMENT ENHANCEMENT PROJECTS

## Outdoor Learning Areas

Current



## Turtle Rock Elementary School

- Introduce synthetic turf
- Add outdoor seating/umbrellas
- Install writable surfaces on exterior walls

Enhancement



# LEARNING ENVIRONMENT ENHANCEMENT PROJECTS

## Outdoor Courtyard Learning Area

Current



## Alderwood Elementary School

- Introduce synthetic turf

Enhancement





# LEARNING ENVIRONMENT ENHANCEMENT PROJECTS

## Indoor Collaboration Area within Commons

Current



### Vista Verde School

- Remove casework
- Repair finishes
- Add flexible furniture

Enhancement





*QUESTIONS?*