

Irvine High School Performing Arts Complex Public Information Meeting

November 19, 2020



MEETING AGENDA

- Introductions
- Overview of Measure E Program
- Project Overview
- Next Steps
- Resources
- Questions and Answers



INTRODUCTIONS

Team Members:

- Jesse Barron- IUSD, Assistant Director Facilities Planning: JesseBarron@iusd.org
 - Keith Tuominen - IUSD, Executive Director, Secondary Education
 - Kelvin Okino - IUSD, Executive Director, Facilities Planning and Construction
 - Christa DeBoer - IUSD, Supervisor of Planning and Construction
 - Monica Colunga - IUSD, Principal of Irvine HS
 - Roger Clarke - Ruhnau Clarke Architects
 - Benjarmin Gallardo - Ruhnau Clarke Architects
 - Alvin Flores- Ruhnau Clarke Architects
 - Jonathan Keene - CW Driver
-
- In addition to receiving questions and comments during the live stream, additional comments for tonight's meeting can be submitted by going to: and clicking on <https://iusd.org/business-services/facilities-planning-construction-services/measure-e/measure-e-projects/irvine-3> and clicking on "Comment Card"



Overview of Measure E Program



HISTORY OF MEASURE E

- **Comprehensive plan created in 2012**
- **Refined in 2015 with current cost estimates**
 - Districtwide improvement needs over **\$800.0 million**
 - Districtwide needs include:
 - facilities improvements
 - enrollment growth
 - site upgrades
 - upgrades to non-school site facilities
- **Determined the need for a General Obligation Bond**



SFID BOND MEASURE

- **Schools Facility Improvement District (SFID)**
 - Carved out newer schools under a Mitigation Agreement (Mello-Roos)
 - Focused on 28 schools of the 38 schools
- **June 7, 2016 Ballot**
 - \$319.0 million Bond Measure (Measure E)
 - \$29 / \$100,000 assessed value tax increase
 - Four bond series sales
 - Proposition 39 (School Facilities Local Vote Act of 2000)
 - Passed at 60.2% (55% required)



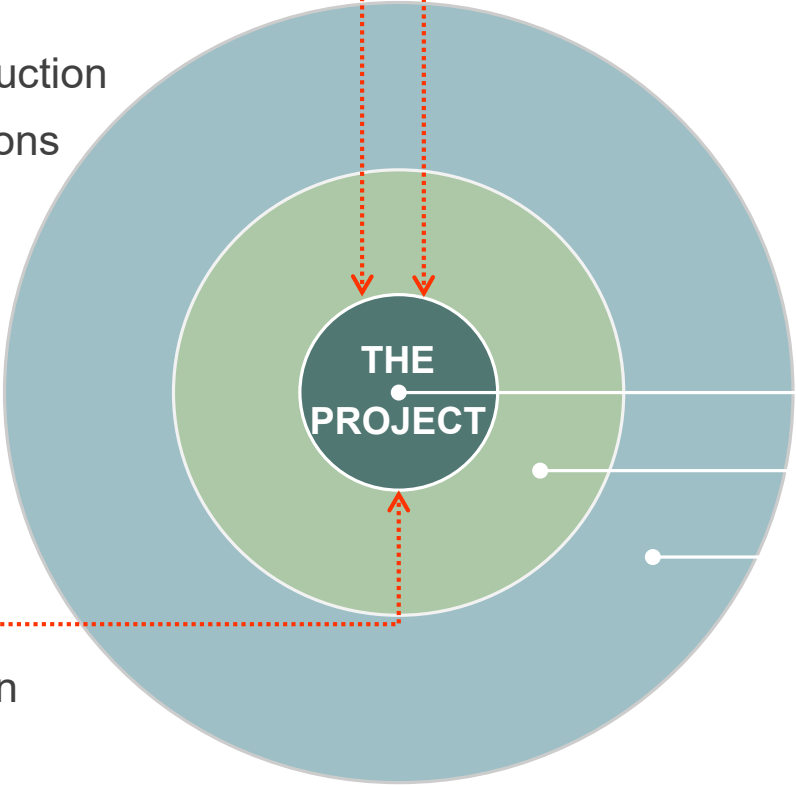
COLLABORATIVE COORDINATED PROCESS

INTERNAL REVIEWS

- School Site
- Facilities Planning/Construction
- Maintenance and Operations
- Information Technology
- Education Services
- Visual/Performing Arts
- Nutrition Services
- Security
- Consultants

BOARD/COMMITTEES

- School Board of Education
- Planning Committee
- Schools Facilities Improvement Measure Committee
- Citizens Oversight Committee



AGENCY APPROVALS

- California Dept. of Ed.
- Div. of State Architect
- Fire Authority
- State Allocation Board
- Local Utility Companies

Project Planning

Site Logistics/Impacts

Community Outreach

- Parents/Students
- Homeowners Assoc.
- Neighbors
- City of Irvine



WHERE WE ARE TODAY (SERIES 1)

- ✓ **Enclose Classrooms (6 schools)**
Bonita Canyon ES, College Park ES, Culverdale ES,
Greentree ES, Santiago Hills ES, Stone Creek ES
- ✓ **High School Modernizations (2 schools)**
Irvine HS, University HS
- ✓ **Expansions (2 schools)**
Eastshore ES, Creekside HS
- ✓ **Elementary School Modernizations (4 schools)**
Brywood ES, Meadow Park ES, Springbrook ES, Westpark ES
- ✓ **High School Field Improvements (2 schools)**
Northwood HS, Woodbridge HS
- ✓ **Interim Campuses (2 schools)**
El Camino, Westwood Basics

✓ Construction complete, 17 of 28 Series 1 projects have a Final Budget



WHERE WE ARE TODAY (SERIES 1)

✓ *-continued-*

✓ **Middle School Science Classrooms (5 schools)**

Lakeside MS, Rancho San Joaquin MS, Sierra Vista MS,
South Lake MS, Venado MS

✓ **New Theater (1 school)**

Woodbridge HS

✓ **Music Classroom Buildings (3 schools)**

Brywood ES, Meadow Park ES, Springbrook ES

✓ Construction complete, 17 of 28 Series 1 projects have a Final Budget



WHERE WE ARE TODAY (SERIES 2, AFAP, SERIES 3)

SERIES 2 – UNDER CONSTRUCTION

- **New Music Building/MPR (3 schools)**
Bonita Canyon ES, Northwood ES, Turtle Rock ES
- **Expansion/Collab, Design Lab, Special Education Reconfiguration (1 school)**
University Park ES

AUGMENTED FUNDS TO ACCELERATE PROJECTS– IN DESIGN

- **New Music Building/Music Expansions (4 schools)**
Canyon View ES, Deerfield ES, Oak Creek ES, Plaza Vista
- **New Performing Arts Complex (1 school)**
Irvine HS (Design Only)

SERIES 3 – AWAITING BOND SALE

- **Modernizations (2 schools)**
South Lake MS, Woodbridge HS (Building J + K)
- **New Performing Arts Complex (1 school)**
Irvine HS (Construction)

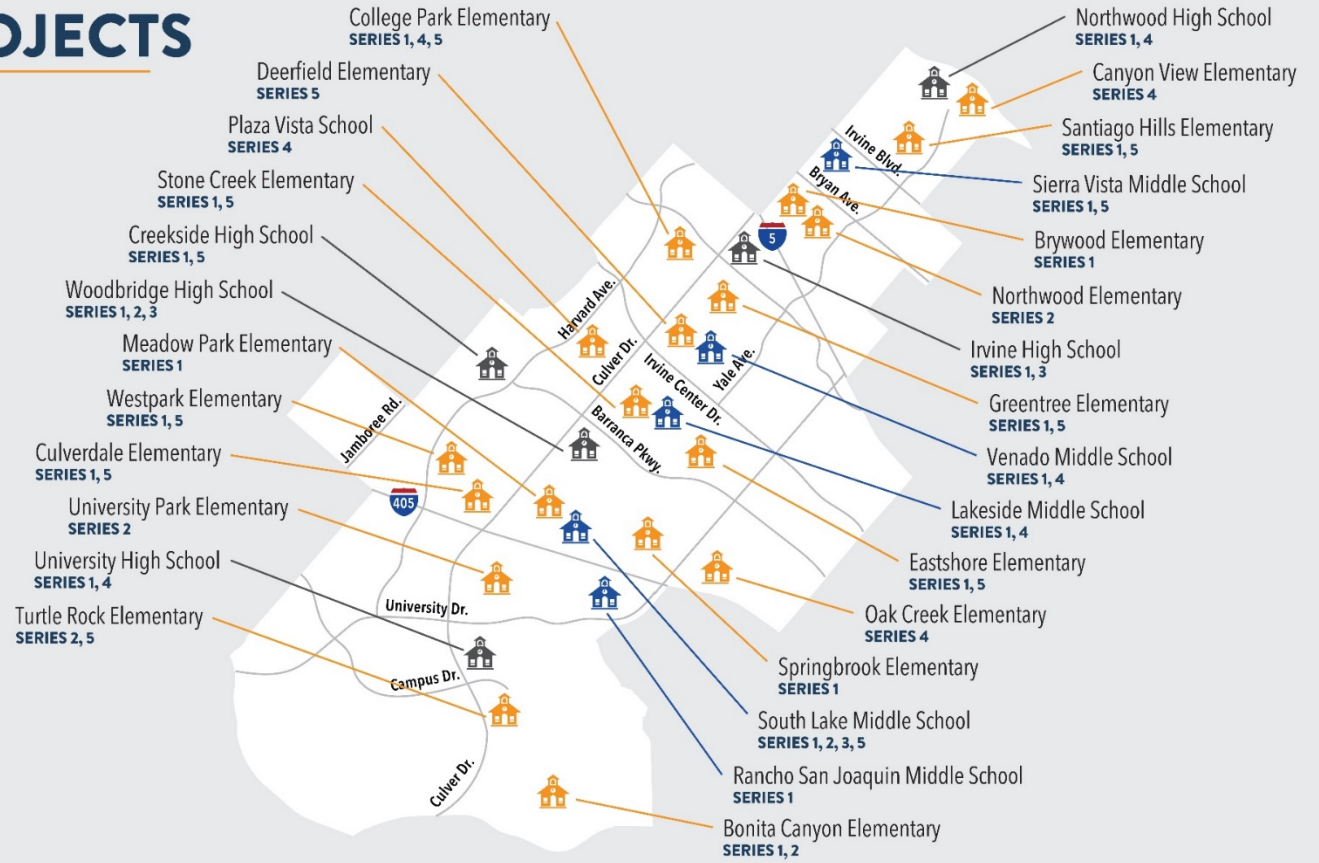
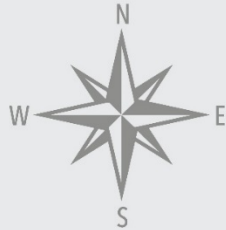


MEASURE E PROJECTS

 - High Schools

 - Middle Schools

 - Elementary Schools



SERIES 1
2016
21 schools

SERIES 2
2018
6 schools
(3 repeats)

SERIES 3
2021
1 school
(1 repeat)

SERIES 4
2024
8 schools
(5 repeats)

SERIES 5
2028
12 schools
(11 repeats)

FOR MORE INFORMATION:



IUSD.org/MeasureE



(949) 936-5000

Project Overview



PROJECT SCOPE

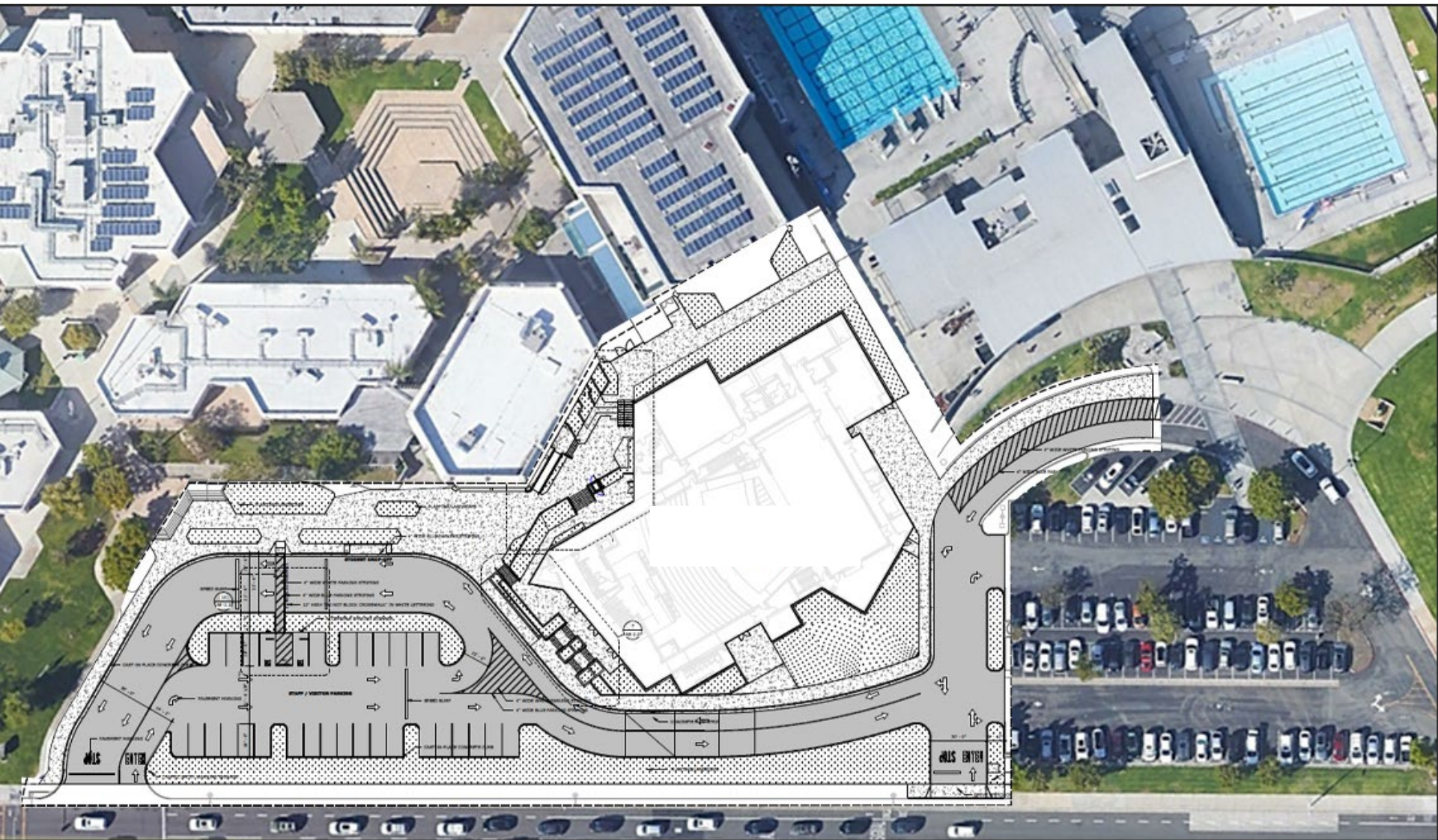
- Construct new Performing Arts Complex (PAC) including theater, drama black box, dressing rooms, scene shop, costume storage, workroom, and other performing arts elements.
- Reconfigure existing parking lot and drop off to accommodate new building.
- Site work associated with the new building.



CURRENT CAMPUS CONFIGURATION



SITE PLAN FOR PROPOSED NEW PAC



PAC- EXTERIOR RENDERING ALONG WALNUT AVE



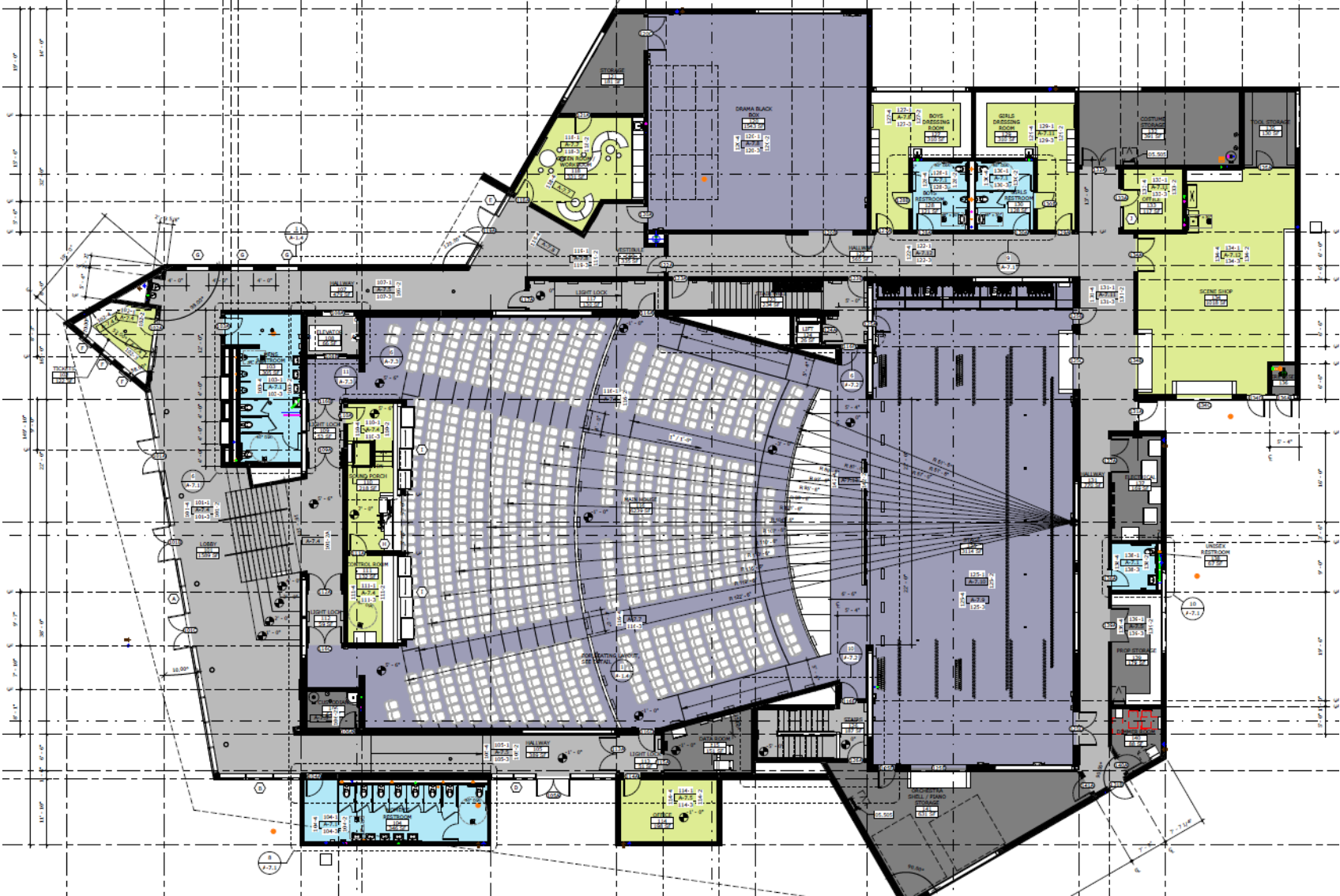
PAC- EXTERIOR RENDERING AERIAL FROM WALNUT



PAC- EXTERIOR RENDERING FROM IRVINE HS CAMPUS



PAC-FLOOR PLAN



Next Steps

- Staff Receives Questions and Comments (Tonight)
- Staff Presents Questions and Comments to Board
 - Tuesday, December 15, 2020 – 6:30 PM
 - A live broadcast of the Board of Education Meeting can be viewed at: <https://iusd.org/boardmeetings>
- Board Provides Recommendation Based on Comments



MEASURE E RESOURCES

- Measure E Webpage
iusd.org/MeasureE
- Irvine HS Measure E Webpage – school site updates
(Coming Soon)
https://iusd.org/measuree_ihs
- Citizens Oversight Committee Webpage
iusd.org/COC
- Contact Email for Questions/Concerns
MeasureE@iusd.org





QUESTIONS and ANSWERS