

# IUSD Specialist Program: Art and Music

February 9, 2010

# Program Description-Art

- Current:
  - 4<sup>th</sup>, 5<sup>th</sup> 6<sup>th</sup> Grade
  - 6 One Hour Lessons per year
  - Staffing:
    - 2.73 FTE
    - \$241,134
- TIC Donation (2010-11):
  - 4<sup>th</sup>/5<sup>th</sup> /6<sup>th</sup> Grade:
    - “Suspension of Program”
  - Similar Reduction to Music:
    - Possibility of 3 lessons for Grades 5 and 6
  - Staffing
    - 1.6 FTE
    - \$168,571

# Program Description-Music

- Current:
  - 4<sup>th</sup>, 5<sup>th</sup> 6<sup>th</sup> Grade
  - 2 Forty Minute Lessons per week
  - Staffing:
    - 13.23 FTE
    - \$1,265,497.68
- TIC Donation (2010-11):
  - 4<sup>th</sup>/5<sup>th</sup> /6<sup>th</sup> Grade :
    - One Forty Minute Lesson per week
  - Instructional Assistants:
    - Elimination of 3.421 FTE
    - \$86,759.00
  - Staffing For Music
    - 8.03 FTE
    - \$1,000,000

# Art/Music Block Grant-Tier III

- ART
  - Elimination of K-3 Art lessons (6 one hour lessons per year).
- Primary Music
  - Elimination of 3<sup>rd</sup> grade primary music ( 18 forty minutes lessons per year).

Current 2009-10 Profile:

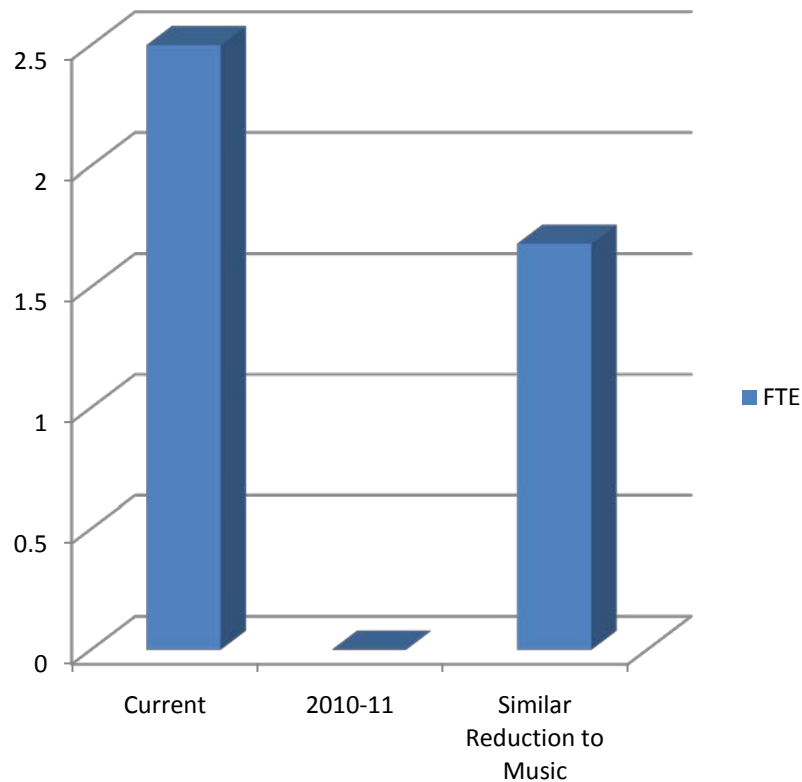
K-3 Art : 2.15 FTE

3<sup>rd</sup> Grade Music: .8 FTE

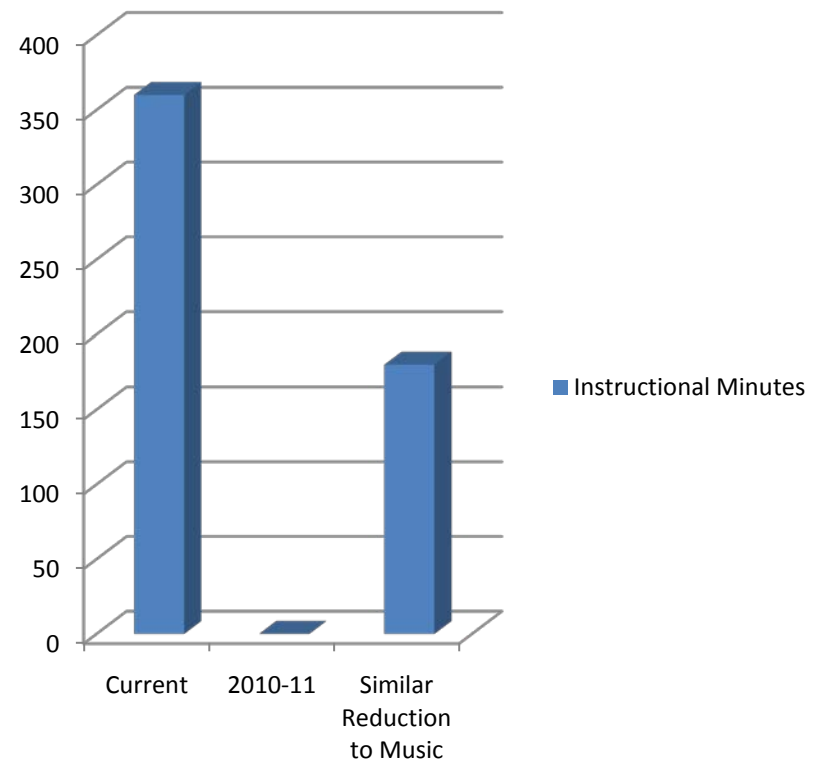
Total Compensation: \$235,595

# Impact to 4-6 Art Program

## Art FTE Grades 4-6

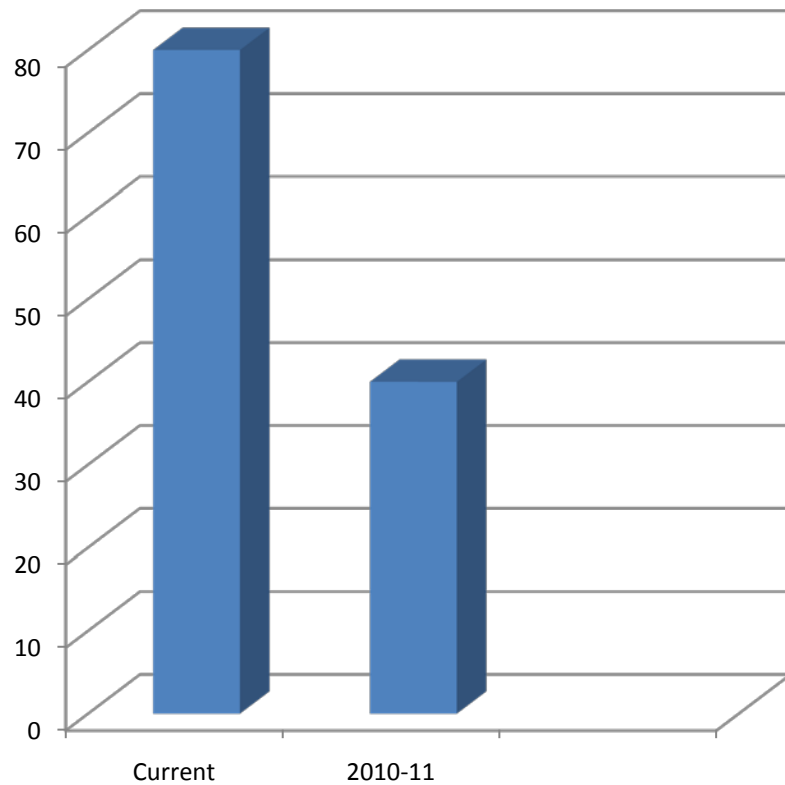


## Art Instructional Minutes 4-6

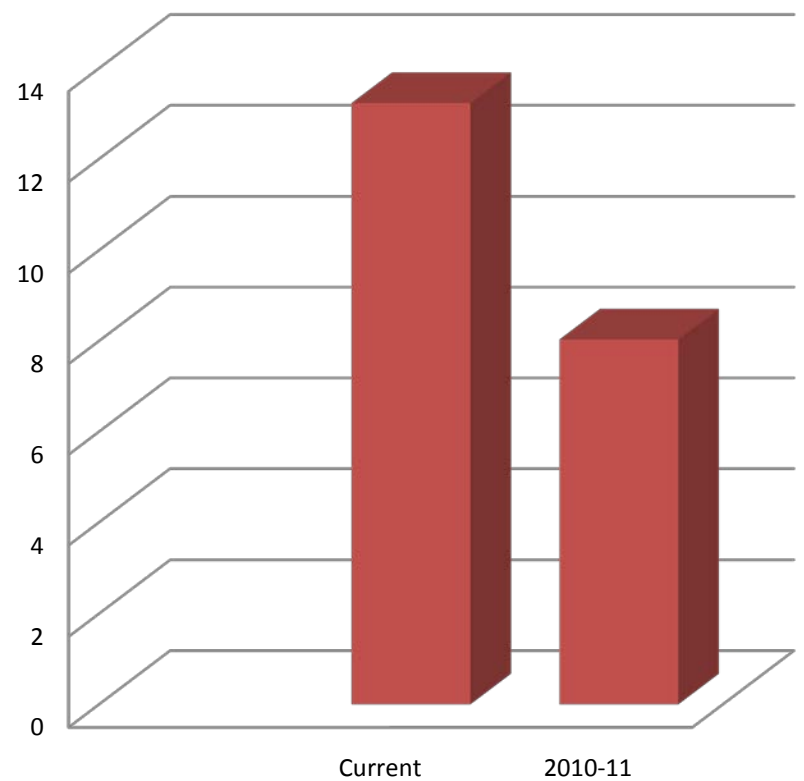


# Impact to 4-6 Music Program

## Music Instructional Minutes 4-6



## Music 4-6 FTE



# Impact of Program Reduction

- Donald Bren Honors Concert would face downsizing given decreased participation for all grades.
- Reduction in Irvine Public Schools Foundation's Instrument Rental Program, costing \$145,000.
- Will require a change in report card grading practices.
- Per Education Code, classroom teachers will need to instruct these subject areas.

# Revenue Options

- Expand IPSF Instrument Rental
- Voluntary lab fee donation
  - Offset cost of materials for music/art
- Tier III Categorical Funds
  - Reduce size of program reduction