

**SCHOOL STATISTICS**

Grades:	9-12
2014/15 Enrollment:	2168
Year Built:	1999
Modernization:	(2024)
Site Acreage:	40.0
# Portables:	4
Existing Parking:	636
Proposed Parking:	626
Parking Reduction:	10

**CAPACITY**

72 Standard Classrooms
+7 SDC
=79 Teaching Stations
+2 SDC/Living Skills
+8 Teaching Stations
=89 Teaching Stations
+(7) Portables for Growth

**PROPOSED SCOPE**

- New Construction
- Reconfiguration
- Modernization
- New Site Work
- Demolition

**Project 1**

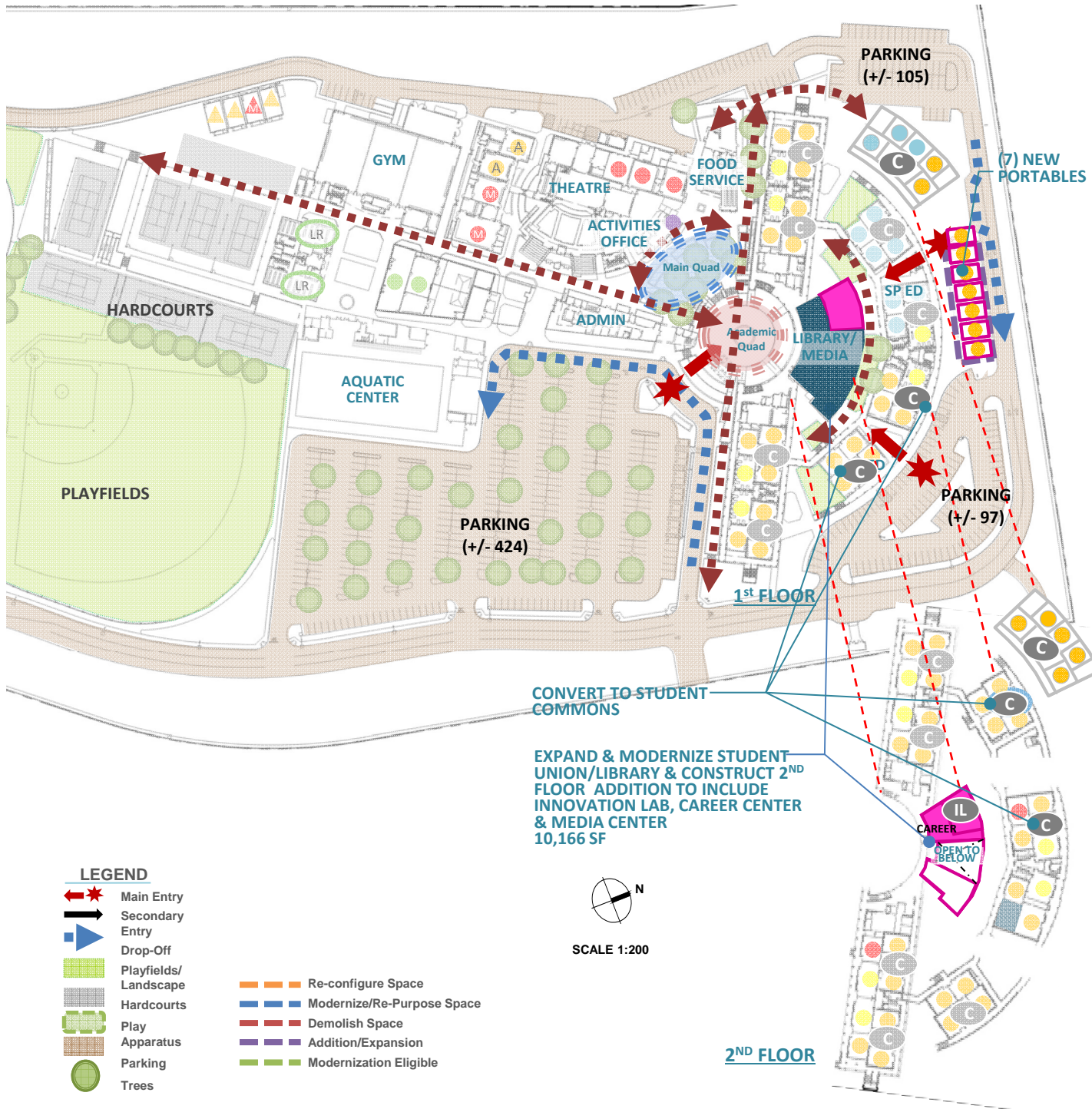
**UTILIZATION LEGEND**

- Classroom Clusters
- Science
- Business/Design/Engineering
- Special Ed (SDC/SH)
- Physical Education
- Performing Arts/Multi Media
- ASB/Library/Student Union
- △ Portable (Color based on Program)
- Other Spaces

The Master Plan for this site is conceptual in nature and shows potential/possible facility improvements at the site aligned to IUSD Educational Specifications. Funding and prioritization of the scope of work listed will determine how the Master Plan for the site is implemented.

**Facilities Master Plan— Northwood High School**  
 4815 Portola Parkway | Irvine, CA 92620

# Northwood High School



### SCHOOL STATISTICS

Grades:	9-12
2014/15 Enrollment:	2168
Year Built:	1999
Modernization:	(2024)
Site Acreage:	40.0
# Portables:	4
Existing Parking:	636
Proposed Parking:	626
Parking Reduction:	10

### CAPACITY

88 Teaching Stations  
 -4 Teaching Stations (Commons)  
 -1 Library Computer Lab  
 +1 Innovation Lab  
 =84 Teaching Stations

### PROPOSED SCOPE

- New Construction
- Reconfiguration
- Modernization
- New Site Work
- Demolition

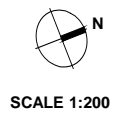
## Project 2

### UTILIZATION LEGEND

- Classroom Clusters
- Science
- Business/Design/Engineering
- Special Ed (SDC/SH)
- Physical Education
- Performing Arts/Multi Media
- ASB/Library/Student Union
- Portable (Color based on Program)
- Other Spaces

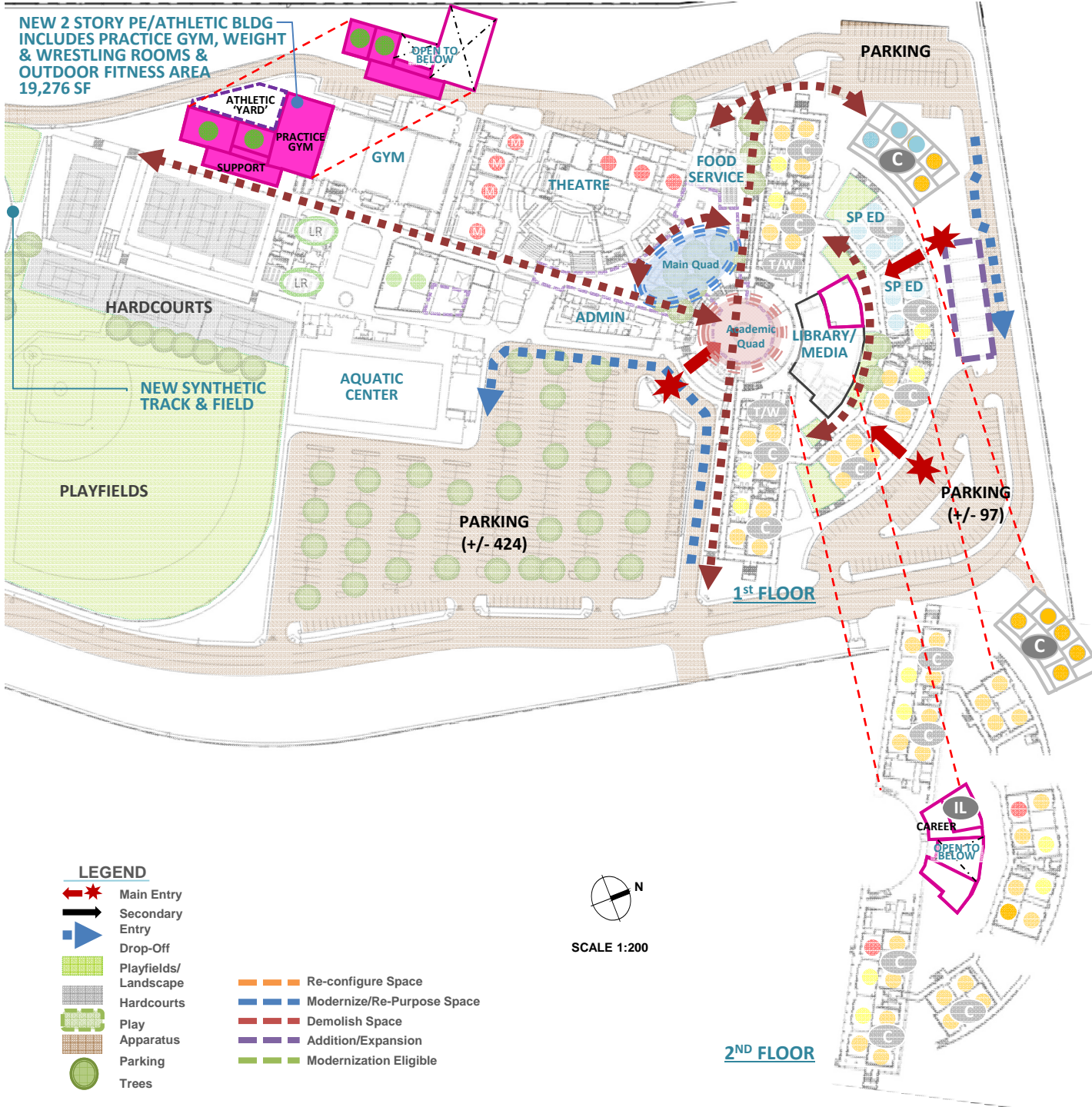
### LEGEND

- Main Entry
- Secondary Entry
- Drop-Off
- Playfields/Landscape
- Hardcourts
- Play Apparatus
- Parking
- Trees
- Re-configure Space
- Modernize/Re-Purpose Space
- Demolish Space
- Addition/Expansion
- Modernization Eligible



The Master Plan for this site is conceptual in nature and shows potential/possible facility improvements at the site aligned to IUSD Educational Specifications. Funding and prioritization of the scope of work listed will determine how the Master Plan for the site is implemented.

# Northwood High School



### SCHOOL STATISTICS

Grades:	9-12
2014/15 Enrollment:	2168
Year Built:	1999
Modernization:	(2024)
Site Acreage:	40.0
# Portables:	4
Existing Parking:	636
Proposed Parking:	626
Parking Reduction:	10

### CAPACITY

84 Teaching Stations

#### PROPOSED SCOPE

- New Construction
- Reconfiguration
- Modernization
- New Site Work
- Demolition

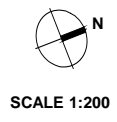
## Project 3

#### UTILIZATION LEGEND

- Classroom Clusters
- Science
- Business/Design/Engineering
- Special Ed (SDC/SH)
- Physical Education
- Performing Arts/Multi Media
- ASB/Library/Student Union
- Portable (Color based on Program)
- Other Spaces

#### LEGEND

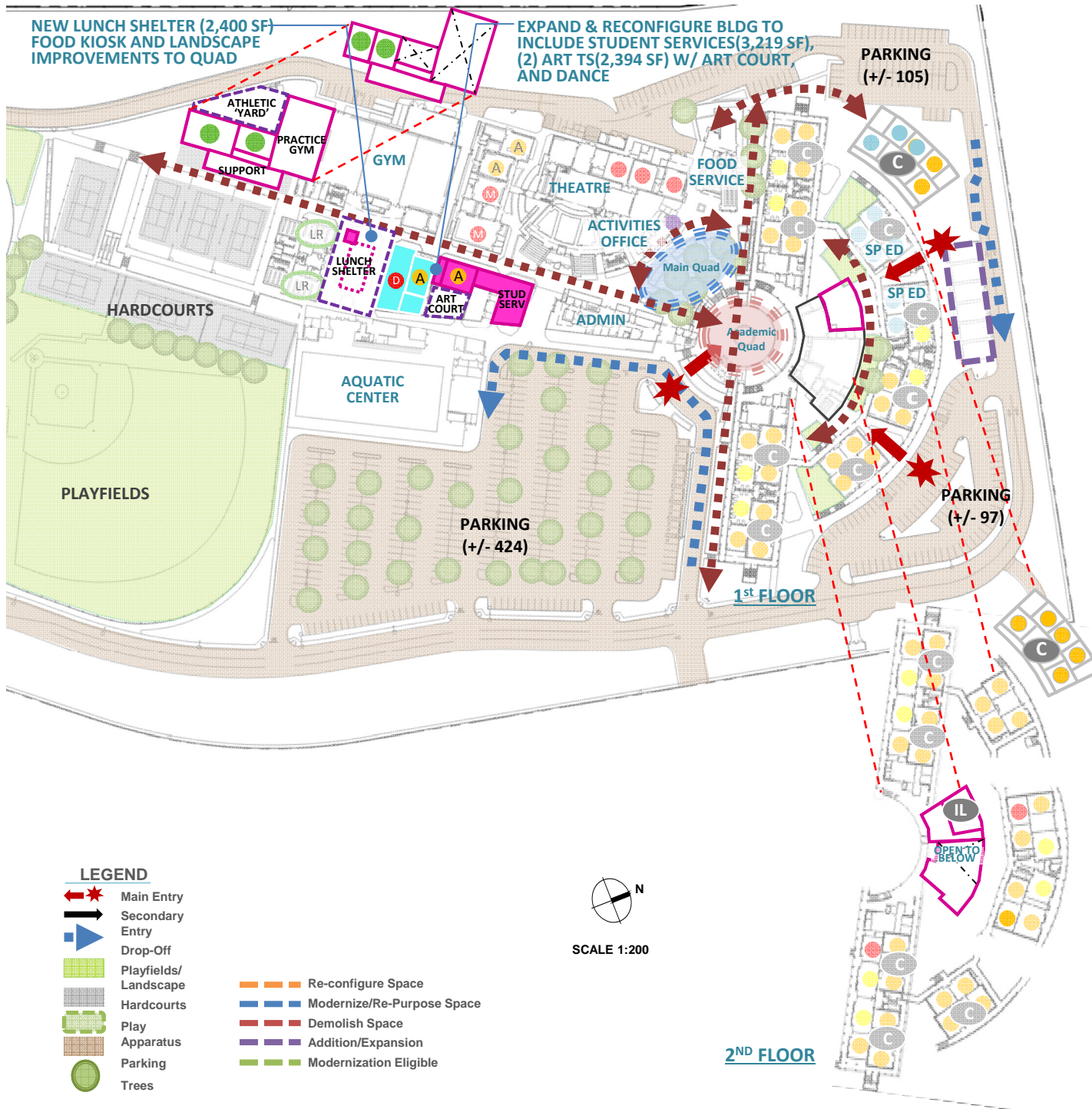
- ★ Main Entry
- ➔ Secondary Entry
- ➔ Drop-Off
- Playfields/Landscape
- Hardcourts
- Play Apparatus
- Parking
- Trees
- Re-configure Space
- Modernize/Re-Purpose Space
- Demolish Space
- Addition/Expansion
- Modernization Eligible



The Master Plan for this site is conceptual in nature and shows potential/possible facility improvements at the site aligned to IUSD Educational Specifications. Funding and prioritization of the scope of work listed will determine how the Master Plan for the site is implemented.

Facilities Master Plan— Northwood High School  
4515 Pontola Parkway | Irvine, CA 92620

# Northwood High School



**SCHOOL STATISTICS**

Grades:	9-12
2014/15 Enrollment:	2168
Year Built:	1999
Modernization:	(2024)
Site Acreage:	40.0
# Portables:	4
Existing Parking:	636
Proposed Parking:	626
Parking Reduction:	10

**CAPACITY**

84 Teaching Stations  
 -2 NS Teaching Stations  
 +3 Teaching Stations  
 =85 Teaching Stations

**PROPOSED SCOPE**

- New Construction
- Reconfiguration
- Modernization
- New Site Work
- Demolition

**Project 4**

**UTILIZATION LEGEND**

- Classroom Clusters
- Science
- Business/Design/Engineering
- Special Ed (SDC/SH)
- Physical Education
- Performing Arts/Multi Media
- ASB/Library/Student Union
- Portable (Color based on Program)
- Other Spaces

The Master Plan for this site is conceptual in nature and shows potential/possible facility improvements at the site aligned to IUSD Educational Specifications. Funding and prioritization of the scope of work listed will determine how the Master Plan for the site is implemented.

**Northwood High School**

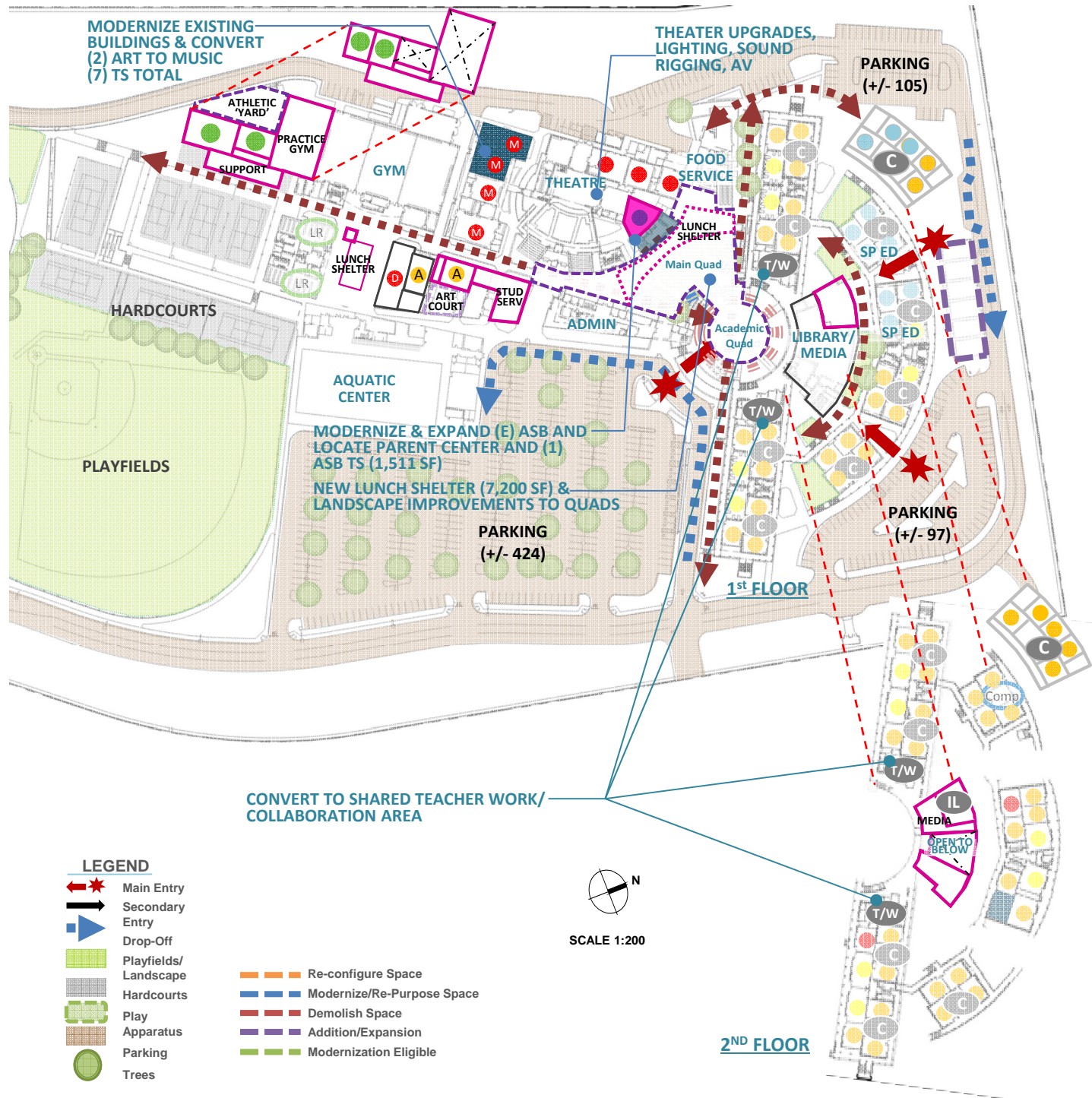
Facilities Master Plan - Northwood High School  
 4515 Portola Parkway | Irvine, CA 92620

# Northwood High School

The Master Plan for this site is conceptual in nature and shows potential/possible facility improvements at the site aligned to IUSD Educational Specifications. Funding and prioritization of the scope of work listed will determine how the Master Plan for the site is implemented.

Facilities Master Plan—Northwood High School  
4515 Portola Parkway | Irvine, CA 92620

Sept 2015



### SCHOOL STATISTICS

Grades:	9-12
2014/15 Enrollment:	2168
Year Built:	1999
Modernization:	(2024)
Site Acreage:	40.0
# Portables:	4
Existing Parking:	636
Proposed Parking:	616
Parking Reduction:	20

### CAPACITY

85 Teaching Stations
----------------------

### PROPOSED SCOPE

- New Construction
- Reconfiguration
- Modernization
- New Site Work
- Demolition

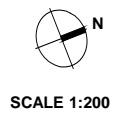
## Project 5

### UTILIZATION LEGEND

- Classroom Clusters
- Science
- Business/Design/Engineering
- Special Ed (SDC/SH)
- Physical Education
- Performing Arts/Multi Media
- ASB/Library/Student Union
- Portable (Color based on Program)
- Other Spaces

### LEGEND

- ★ Main Entry
- ➔ Secondary Entry
- ➔ Drop-Off
- Playfields/Landscape
- Hardcourts
- Play Apparatus
- Parking
- Trees
- Re-configure Space
- Modernize/Re-Purpose Space
- Demolish Space
- Addition/Expansion
- Modernization Eligible



2<sup>ND</sup> FLOOR