

### SCHOOL STATISTICS

Grades:	9-12
2010/11 Enrollment:	1948
Year Built:	1976
Modernization:	Some Bldgs
Site Acreage:	59.1
# Portables:	8
Existing Parking:	± 432
Targeted Enrollment	2400

### CAPACITY

66 Standard Classrooms
+4 SDC
=70 Teaching Stations
+12 TS
=82 Permanent Teaching Stations

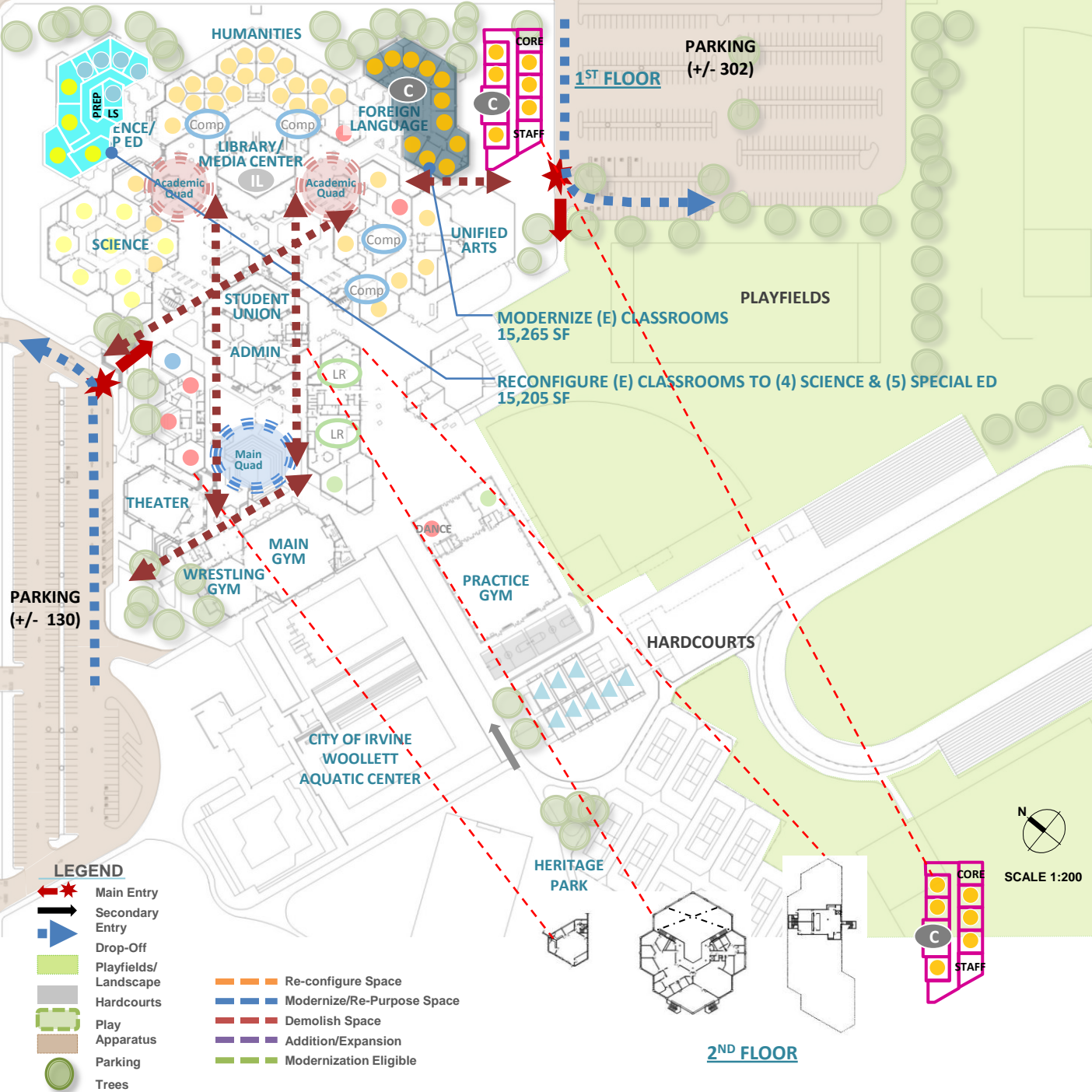
### PROPOSED SCOPE

- New Construction (Pink)
- Reconfiguration (Cyan)
- Modernization (Dark Blue)
- New Site Work (Purple dashed)
- Demolition (Orange dashed)

## Project 1

### UTILIZATION LEGEND

- Classroom Clusters (Yellow circle)
- Science (Light Yellow circle)
- Business/Design/Engineering (Blue circle)
- Special Ed (SDC/SH) (Light Blue circle)
- Physical Education (Green circle)
- Performing Arts/Multi Media (Red circle)
- ASB/Library/Student Union (Purple circle)
- Portable (Color based on Program) (Triangle)
- Other Spaces (Grey circle)



### SCHOOL STATISTICS

Grades:	9-12
2010/11 Enrollment:	1948
Year Built:	1976
Modernization:	Some Bldgs
Site Acreage:	59.1
# Portables:	8
Existing Parking:	± 432
Targeted Enrollment	2400

### CAPACITY

82 Teaching Stations  
 -3 TS for Science Labs  
 -1 Commons  
 =78 Permanent Teaching Stations

### PROPOSED SCOPE

- New Construction
- Reconfiguration
- Modernization
- New Site Work
- Demolition

## Project 2

### UTILIZATION LEGEND

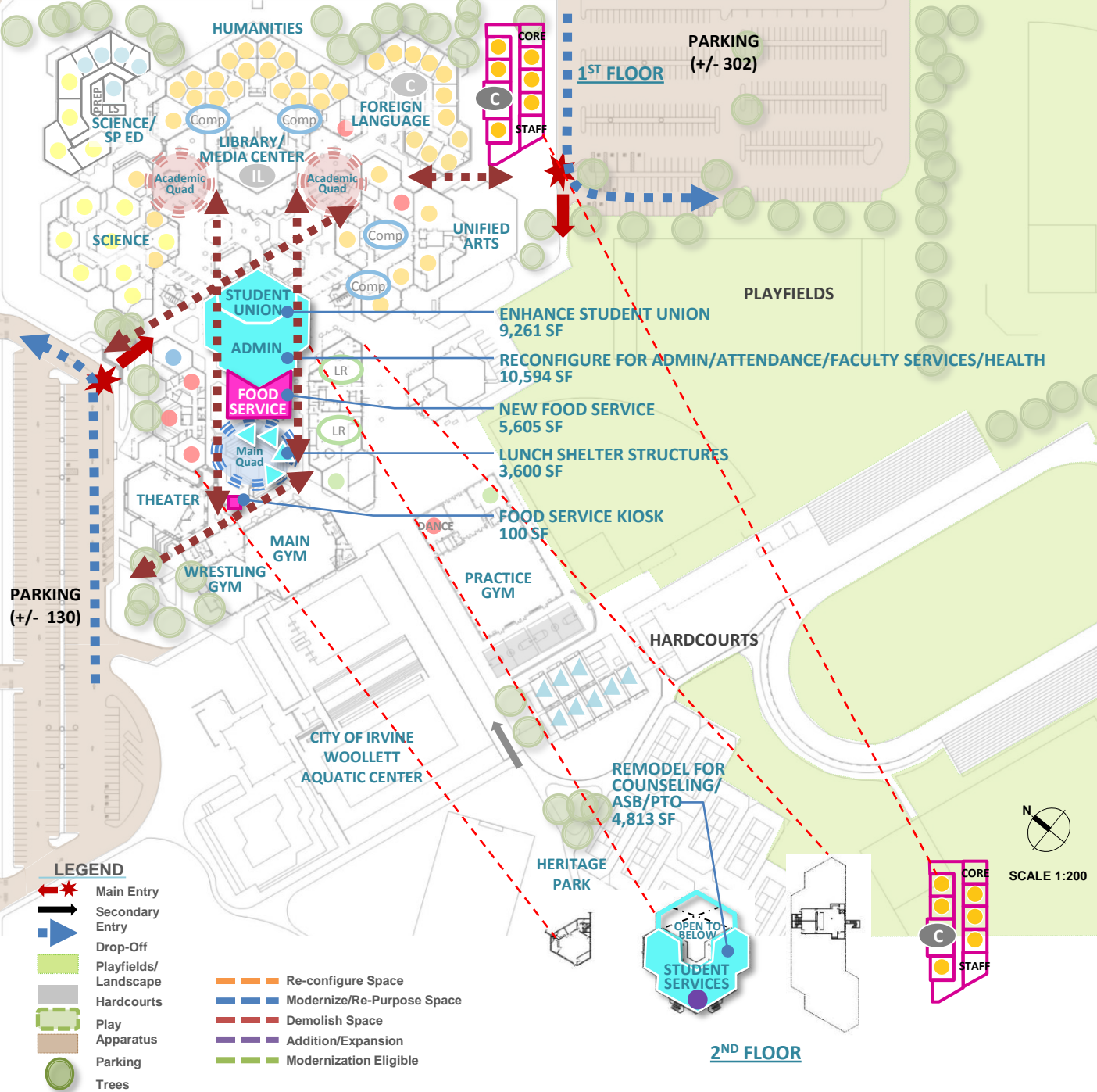
- Classroom Clusters
- Science
- Business/Design/Engineering
- Special Ed (SDC/SH)
- Physical Education
- Performing Arts/Multi Media
- ASB/Library/Student Union
- △ Portable (Color based on Program)
- Other Spaces

### LEGEND

- Main Entry
- Secondary Entry
- Drop-Off
- Playfields/Landscape
- Hardcourts
- Play Apparatus
- Parking
- Trees

- Re-configure Space
- Modernize/Re-Purpose Space
- Demolish Space
- Addition/Expansion
- Modernization Eligible





### SCHOOL STATISTICS

Grades:	9-12
2010/11 Enrollment:	1948
Year Built:	1976
Modernization:	Some Bldgs
Site Acreage:	59.1
# Portables:	8
Existing Parking:	± 432
Targeted Enrollment	2400

### CAPACITY

78 Teaching Stations
-3 Teaching Stations (Admin)
75 Permanent Teaching Stations

### PROPOSED SCOPE

- New Construction
- Reconfiguration
- Modernization
- New Site Work
- Demolition

## Project 3

### UTILIZATION LEGEND

- Classroom Clusters
- Science
- Business/Design/Engineering
- Special Ed (SDC/SH)
- Physical Education
- Performing Arts/Multi Media
- ASB/Library/Student Union
- Portable (Color based on Program)
- Other Spaces

### LEGEND

- Main Entry
- Secondary Entry
- Drop-Off
- Playfields/Landscape
- Hardcourts
- Play Apparatus
- Parking
- Trees
- Re-configure Space
- Modernize/Re-Purpose Space
- Demolish Space
- Addition/Expansion
- Modernization Eligible

### SCHOOL STATISTICS

Grades:	9-12
2010/11 Enrollment:	1948
Year Built:	1976
Modernization:	Some Bldgs
Site Acreage:	59.1
# Portables:	8
Existing Parking:	± 432
Targeted Enrollment	2400

### CAPACITY

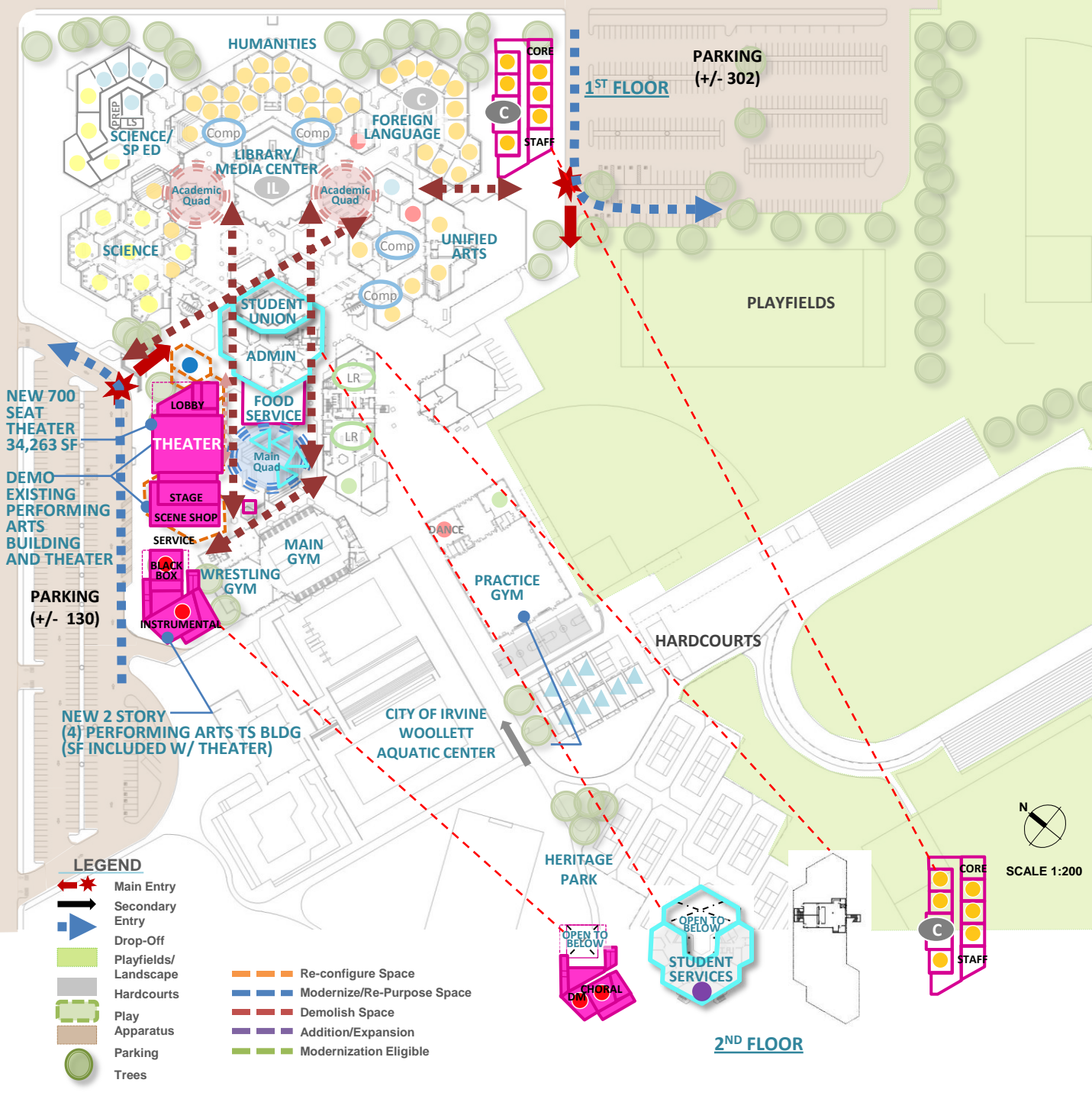
- 75 Teaching Stations
- +1 ASB (Student Union)
- 5 Teaching Stations (Music)
- +4 Teaching Stations (PA)
- =75 Permanent Teaching Stations

### PROPOSED SCOPE

- New Construction
- Reconfiguration
- Modernization
- New Site Work
- Demolition

### UTILIZATION LEGEND

- Classroom Clusters
- Science
- Business/Design/Engineering
- Special Ed (SDC/SH)
- Physical Education
- Performing Arts/Multi Media
- ASB/Library/Student Union
- Portable (Color based on Program)
- Other Spaces



## Project 4



## SCHOOL STATISTICS

Grades:	9-12
2010/11 Enrollment:	1948
Year Built:	1976
Modernization:	Some Bldgs
Site Acreage:	59.1
# Portables:	8
Existing Parking:	± 432
Targeted Enrollment	2400

## CAPACITY

75 Teaching Stations  
 +10 Teaching Stations(New)  
 =85 Permanent Teaching Stations

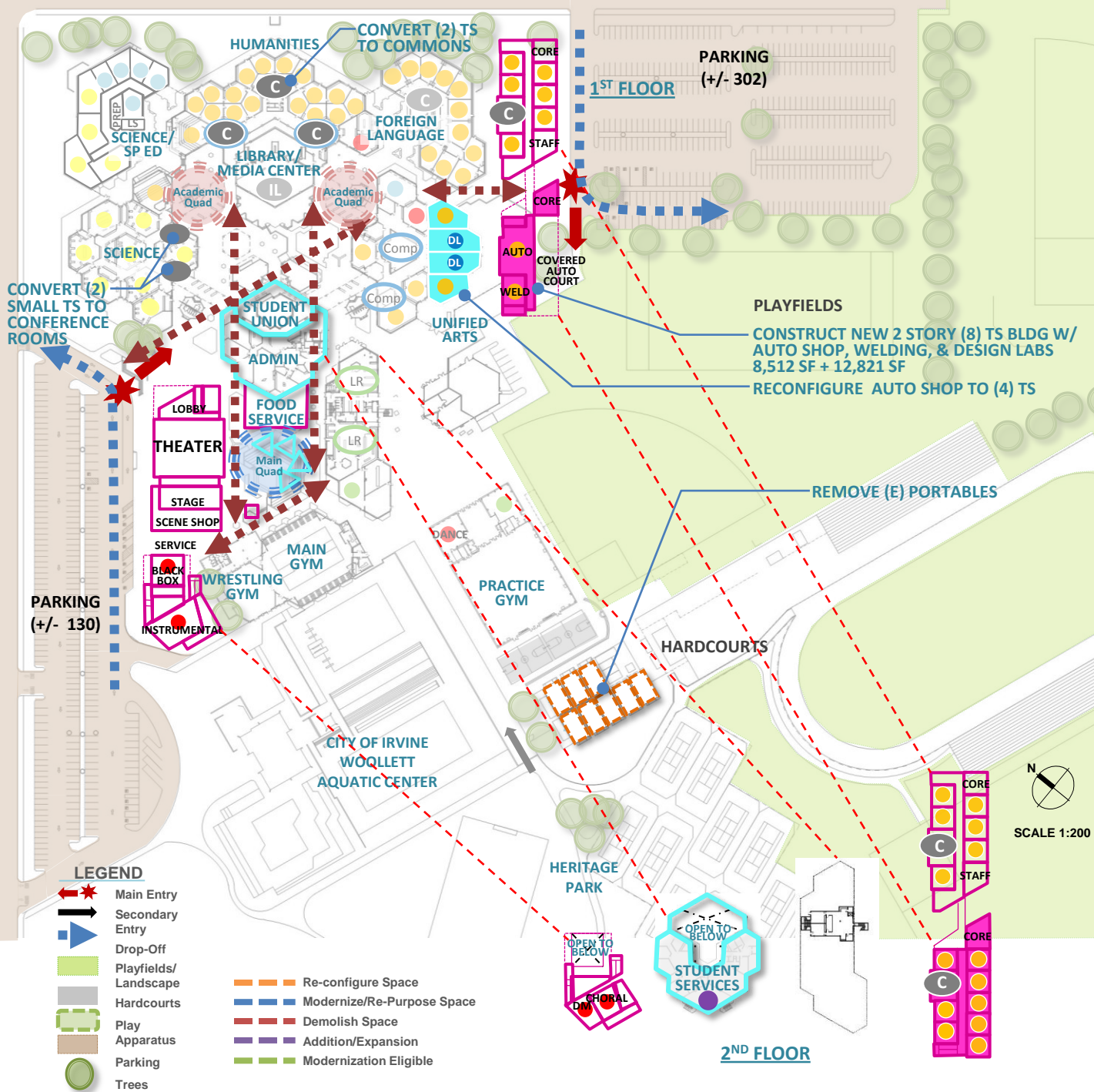
## PROPOSED SCOPE

- New Construction
- Reconfiguration
- Modernization
- New Site Work
- Demolition

## Project 5

### UTILIZATION LEGEND

- Classroom Clusters
- Science
- Business/Design/Engineering
- Special Ed (SDC/SH)
- Physical Education
- Performing Arts/Multi Media
- ASB/Library/Student Union
- Portable (Color based on Program)
- Other Spaces



### LEGEND

- Main Entry
- Secondary Entry
- Drop-Off
- Playfields/Landscape
- Hardcourts
- Play Apparatus
- Parking
- Trees
- Re-configure Space
- Modernize/Re-Purpose Space
- Demolish Space
- Addition/Expansion
- Modernization Eligible

SCALE 1:200

### SCHOOL STATISTICS

Grades:	9-12
2010/11 Enrollment:	1948
Year Built:	1976
Modernization:	Some Bldgs
Site Acreage:	59.1
# Portables:	8
Existing Parking:	± 432
Targeted Enrollment	2400

### CAPACITY

85 Permanent Teaching Stations
8 Portable Classrooms

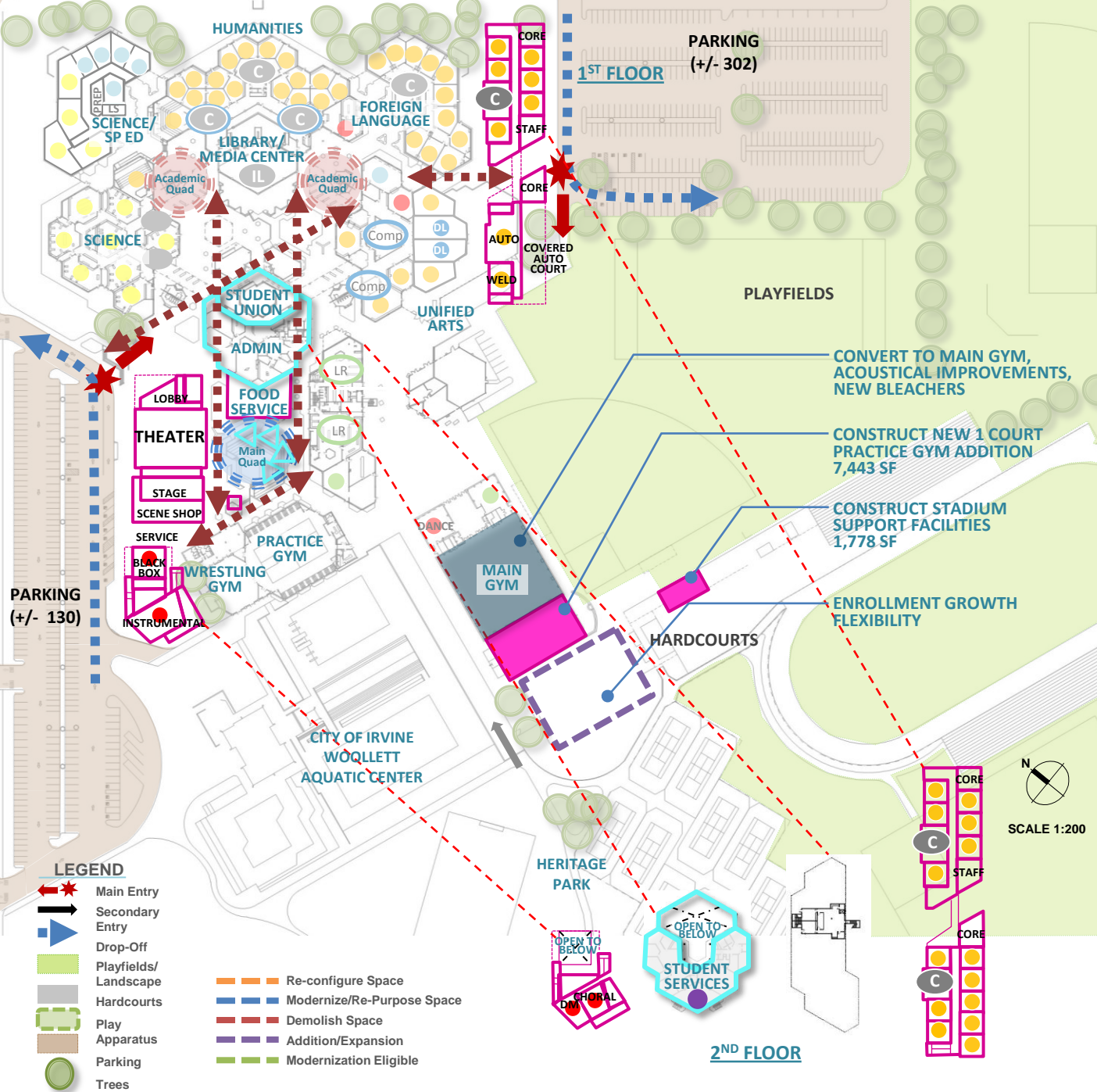
### PROPOSED SCOPE

- New Construction
- Reconfiguration
- Modernization
- New Site Work
- Demolition

## Project 6

### UTILIZATION LEGEND

- Classroom Clusters
- Science
- Business/Design/Engineering
- Special Ed (SDC/SH)
- Physical Education
- Performing Arts/Multi Media
- ASB/Library/Student Union
- Portable (Color based on Program)
- Other Spaces



### LEGEND

- Main Entry
- Secondary Entry
- Drop-Off
- Playfields/Landscape
- Hardcourts
- Play Apparatus
- Parking
- Trees
- Re-configure Space
- Modernize/Re-Purpose Space
- Demolish Space
- Addition/Expansion
- Modernization Eligible

