

CAMPUS OBSERVATIONS

Classrooms

- Lack of adequate Kinder classrooms; 2 regular classrooms, one SAI in small classroom, and one Kinder currently housed in portable
- Three general classroom wings each connect to one small, shared central space; not large enough for breakout activities
- Clustered classrooms do not have doors; teachers complain of acoustic issues
- Classrooms generally spacious, with high ceilings and natural light; natural light that enters is difficult to control, causes glare; teachers also need to talk louder
- Fixed teaching wall may result in decreased flexibility of classrooms
- Lack of computer labs for class activities
- Only 1 Science classroom; lacks proper resources; only one sink in shared space
- Lack Music spaces; only 1 in portable and 1 Den dedicated to music

- Special Ed classrooms seem integrated throughout building in Den spaces and classroom pods; Den spaces are small, little access to natural light
- Benefit of semi-open classrooms is ease of co-teaching Special Ed classes
- No dedicated Art Lab

Library/ Media

- Centrally located, somewhat closer to grades 3-6 classrooms/pods
- Described as being too small; preference for separation between library and media functions
- Computer lab, the only one in the school, can only support one class, resulting in limited technology integration

Food Service

- Small and inadequate
- One (1) door for entry/ exit; small serving window; students do not have covered area and must queue and wait outside

- Food delivery inefficient because of limited space

Multi-Purpose Room

- MPR and stage are adequate in size
- Inability to open to outdoor space
- Stage cannot be used as acoustically-separated classroom

Administrative Area

- Workroom and staff lounge too small; only one workroom in school
- Principal's office too small
- Front office described by staff as very open/distracting for completion of tasks
- Conference room is small; accommodates no more than four people; currently use Special Education den room as conference space



CAMPUS OVERVIEW

Westpark Elementary School is a K-6 year-round, single-track school located in a quiet residential setting with quick access to the 405. The school is situated directly adjacent to San Carlo Park, just down the road from San Marco Park. There is one crossing guard at the intersection of San Carlo and Amore.

The Administrative area and the Multipurpose Room (MPR) are located at the front of the campus with interior hallways connecting to the Library/Media Center and Classroom wings.

The classrooms in the main building are, for the most part, grouped by grade level (K, 1-2, 3-4, and 5-6). The latter three groupings are each organized in pod configurations around small, central, shared spaces that connect directly to the main hallway. In addition to the main academic wings, there are classrooms located off of the Library/ Media and Resource Centers, classrooms in permanent portables near their grade-appropriate main building pod, and three classrooms housed in portables.

Westpark has a strong academic program that includes music, art, and science, taught by specialists in these fields. Instructional materials for various subjects are available online. Additionally, the school strives to provide a positive social climate for all students. A positive behavior system has been implemented to teach and encourage Accountability, Integrity, and Respect.

Mission Statement: to provide the highest quality education in a secure, positive and challenging environment for all students, fostered by a cooperative effort between school and community.

Westpark Elementary School



25 San Carlo | Irvine, CA 92614
Site Analysis

Building Systems

- Original 1990 HVAC consists of inefficient multi-zone units with electric cooling and hot water heat served by a boiler replaced in 2005
- Equipment controlled by a Carrier EMS
- Site does not have photovoltaic panels

General Condition & Infrastructure

- High ceilings cited as costly to heat/cool
- Need for an overall update to the permanent building; portables in fairly good condition

Vehicular Access/ Parking/ Drop-Off

- One main area for drop-off
- Small parking lot; limited parking
- Use of student valet due to inefficient drop-off

Child Care

- Located on the perimeter in portables
- No separate drop-off

Wayfinding & Supervision

- Building somewhat confusing to navigate; long dark hallways, disorienting layout; additional classrooms added to campus in seemingly unplanned manner
- Areas between main building and "permanent portables" may be difficult to supervise
- Adjacency to city park and spaces around portables result in increased need for supervision

Space Needs

- Lack of adequate classroom space; 6 portables and 6 "permanent portables" used as classrooms

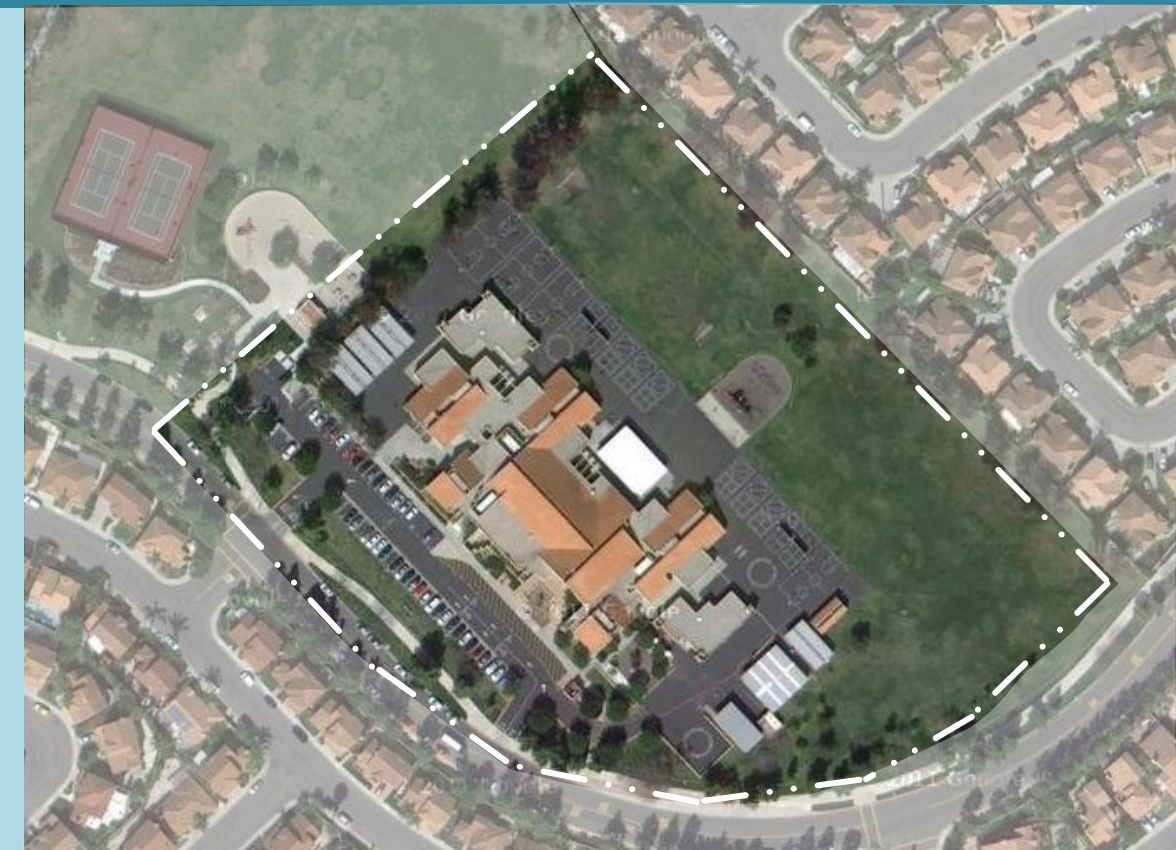
Technology

- Need for more and updated technology throughout the school
- Interest in having dedicated creative media lab for student use
- Some classrooms have a few computers; others only one for teacher; projectors and wireless in classrooms, but no wireless in portables

Outdoor Areas

- Field and hard courts function well for the current need
- Students are too hot in the summer; need for more trees and structures to provide shade
- Desire for outdoor learning and meeting spaces for students and staff; currently, this does not exist

LPA





SCHOOL STATISTICS

Grades:	K-6, yr round
Building SF:	37,185
Portable SF:	7,680
2010/11 Enrollment:	633
Year Built:	1989
Modernization:	(2014)
Site Acreage:	8.3
# Portables:	5 + 3 CC

CLASSROOM COUNT

Kindergarten (2 + 1 Portable)	3
1 st & 2 nd Grade	6
3 rd & 4 th Grade (5 + 1 Portable)	6
5 th & 6 th Grade (5 + 1 Portable)	6
Science	1
Music* (1+1 Portable)	2
Open/Not Used	1
RSP/SAI/OT/Rtl** (7+1 Portable)	8
Computer Lab	1
TOTAL	34

*Music takes place in MPR as well; not included in classroom count
**Small den spaces used for music, speech, and pullout

MEASURES OF QUALITY -

MEASURES OF QUALITY -	+
Wayfinding/ Entry/ Welcome	○ ○ ● ○
Natural Daylighting	○ ● ○ ○
Controllability (Daylight, Lighting, HVAC)	○ ● ○ ○
Flexibility in Classrooms	○ ○ ● ○
Access to Technology	○ ● ○ ○
Collaboration	● ○ ○ ○
Student Display	○ ● ○ ○
MPR	○ ● ○ ○
Library/ Media	○ ● ○ ○
Functional Landscaping	● ○ ○ ○
Energy Consumption	○ ● ○ ○
General Condition	○ ○ ● ○

LEGEND

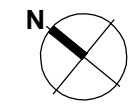
- ★ Main Entry
- Secondary Entry
- ▢ Drop-Off
- ⋯ Main Circulation
- Playfields/Landscape
- Hardcourts
- ▤ Play Apparatus
- Parking
- Trees

UTILIZATION LEGEND

- Kindergarten Classroom
- Classroom
- Science/ Art Lab
- Specialty Classroom
- Special Ed Classroom
- △ Portable (Color based on Program)
- CC Child Care (Portable)
- Other Spaces
- K Kindergarten
- # Grade Level
- S Science
- A Art
- M Music
- RSP Special Ed/Resource
- Rtl Response to Intervention
- SAI Specialized Academic Instruction
- OT Occupational Therapy
- Admin. Administration
- Open Unused Classroom



San Carlo



SCALE 1:60



Front of School



Main Entrance



Student Display: Tile Artwork



Parking & Drop-off



Bike Rack



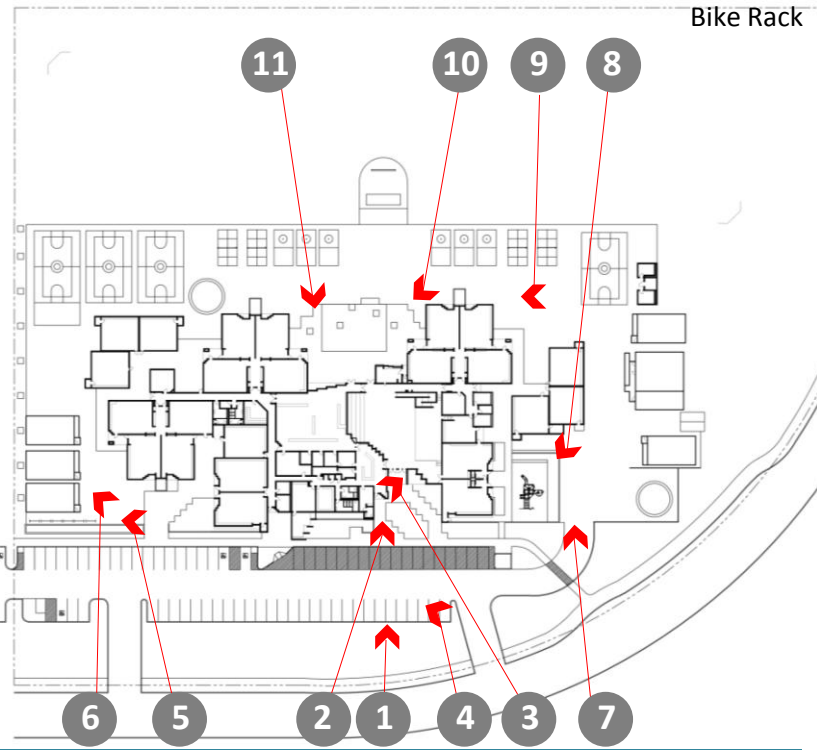
Classroom Portables



Secondary entrance near Childcare Portables



Kindergarten Play Structure and Tables



KEY MAP



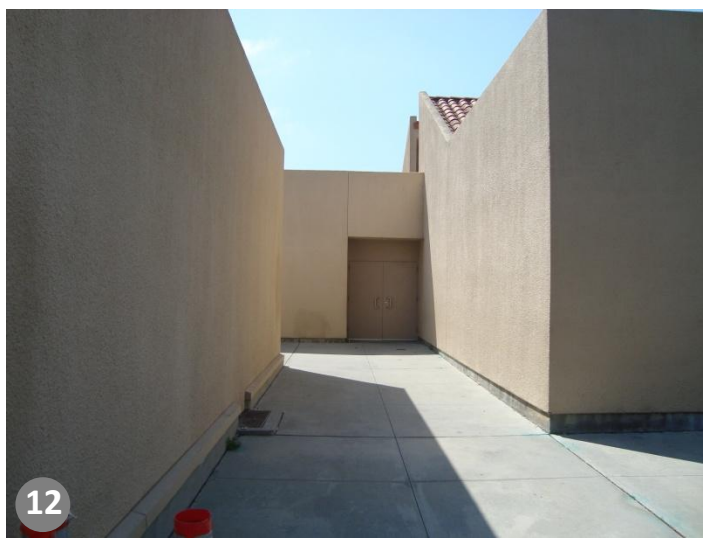
Hardcourt Area



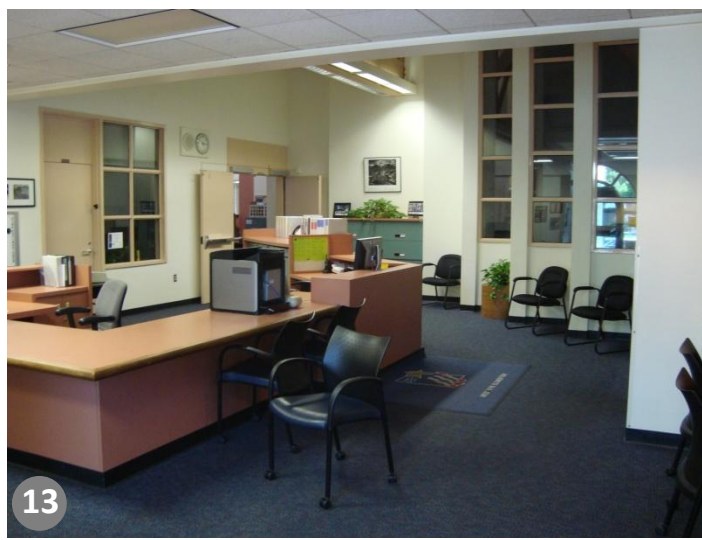
Lunch Shelter



Lunch Shelter and overhang near food service



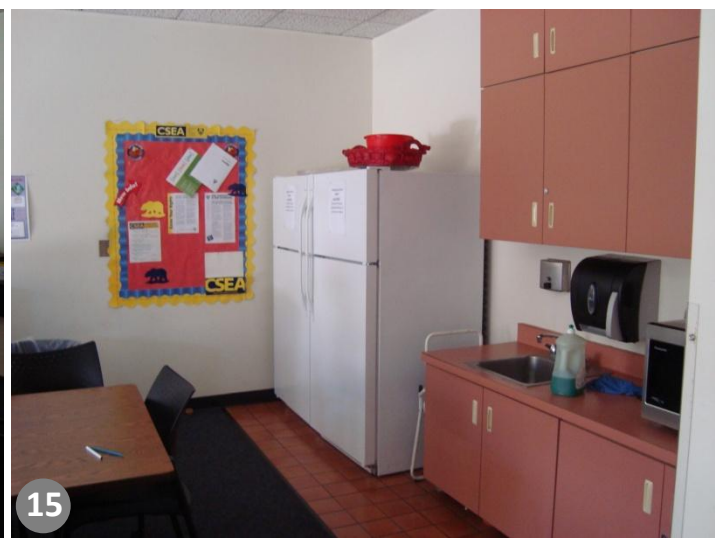
12 Path between buildings (supervision concern)



13 Administrative Area and Waiting Area



14 Staff Lounge



15 Staff Lounge Kitchenette



16 Staff Lounge Patio



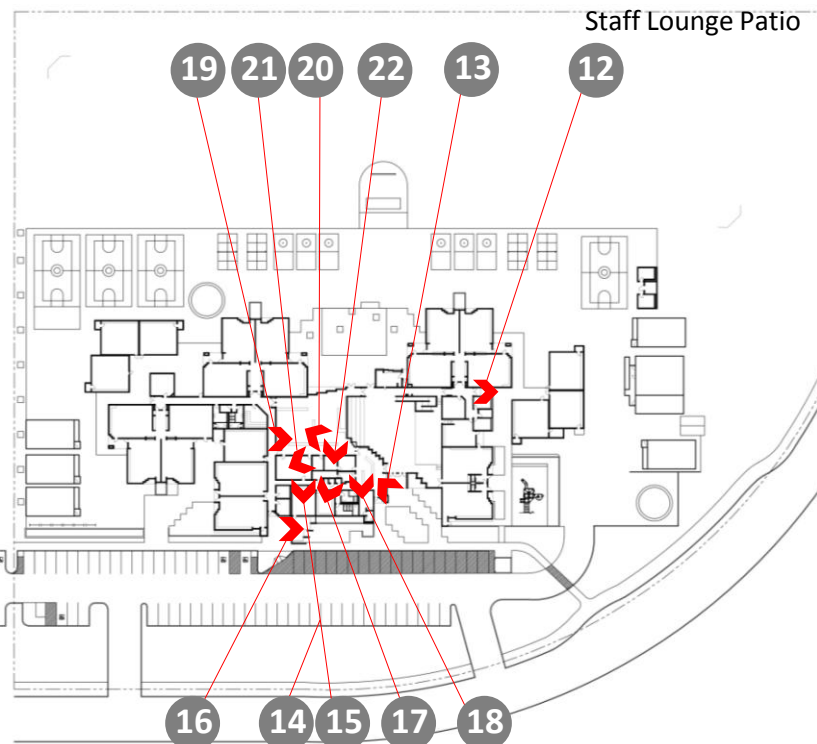
17 Staff Workroom



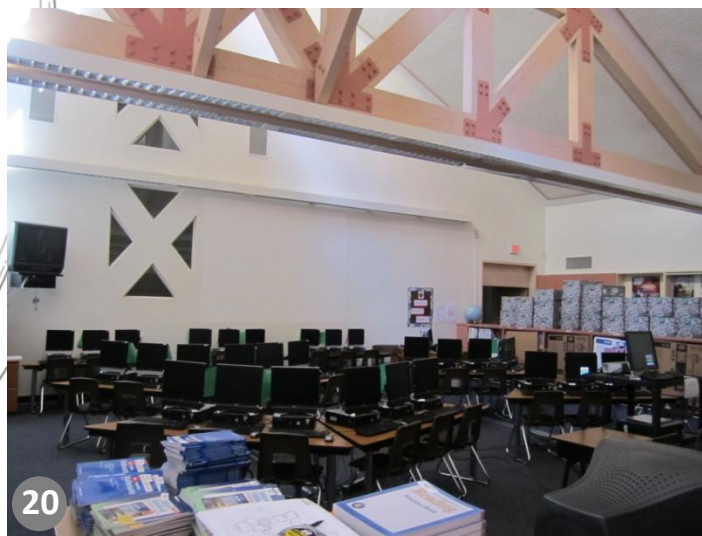
18 Health Office



19 Library



KEY MAP



20 Media Center/Computer Area



21 Resource Room adjacent to Library



22 Conference Room



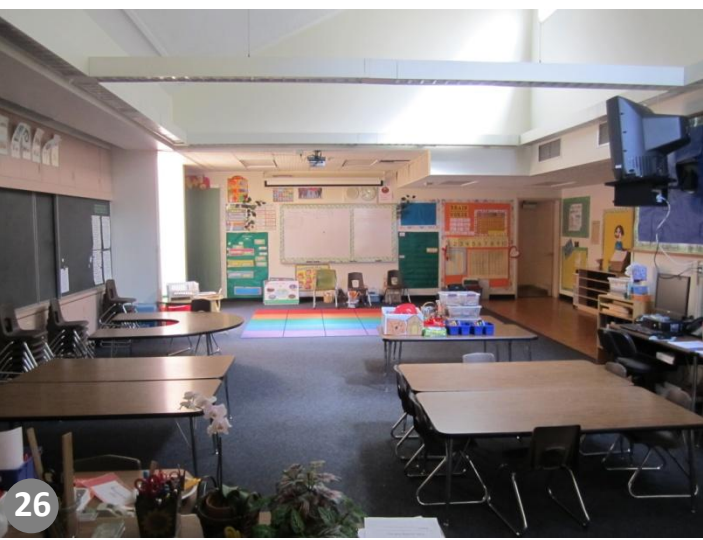
MPR Stage and floor seating



MPR additional seating



Den – Resource space



Typical Kindergarten Room



Typical Classroom (CR 2)



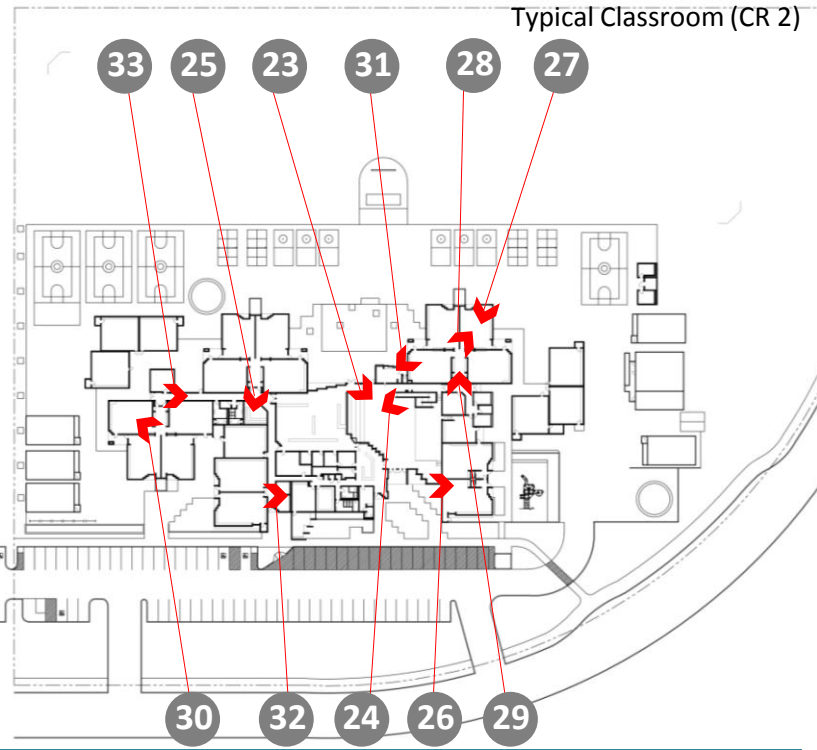
Typical Classroom (CR 2)



Central, shared pod space



Science Classroom



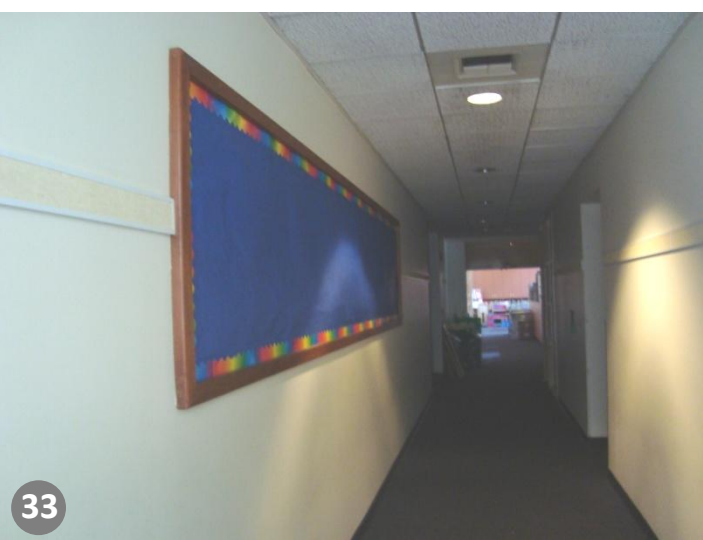
KEY MAP



Food Service Area



Typical Bathroom



Central hallway connecting classroom pods, Admin, Library, MPR