

## CAMPUS OBSERVATIONS

### Classrooms

- Some unused due to decline in enrollment
- Room sizes vary from inadequate to large
- Inefficiencies in some Art and Science room layouts
- Two floors; DHH program only exists on second floor, separate from other classes
- Not all science rooms have sinks or are adequate for lab work
- Loud HVAC/high ceilings create acoustical issues in some classrooms
- Fine Arts rooms tightly scheduled
- Desire for wireless technology in classrooms
- Portables are old/in bad condition

### Food Service

- Outdoor lunch queue has no shade or rain cover; once inside, multiple adjacent exits
- No delivery entrance; all deliveries through office or student areas of campus

### Multi-Purpose Room

- MPR and stage are undersized
- MPR in use every period of day for classes; limits availability for use
- Additional classroom could be used for music, but requires soundproofing
- Stage could be used as small classroom (moveable partition)
- Additional small exterior platform, near MPR; lacks shade

### Support Spaces

- Need for more adequate office space (e.g., Psych, custodial staff)
- Staff Lounge currently housed in vacant classroom; if enrollment increases, will need to accommodate elsewhere
- Health office & teacher workroom very small

## CAMPUS OVERVIEW

Venado Middle School is a 7-8 seasonal school situated directly adjacent to Deerfield Elementary School and Deerfield Community Park in a quiet residential setting. The neighborhood in which the school resides has access to both the I-5 and the 261 toll road.

Classrooms line the main central hallway on two floors. The main Administration and the Media Center reside on the first floor of the school, nearest the parking lot, while the Multi-Purpose Room (MPR) is located at the end of the hallway at the posterior side of the building.

Venado supports a large DHH curriculum (Deaf or Hard of Hearing) as well as after school classes, such as Homework Club and other ACE (After-school Classroom Enrichment) programs. Another unique program at Venado Middle School is the WEB program (Where Everybody Belongs), in which every seventh grade student is mentored by an eighth grade student for the duration of the school year.

Venado is a California Distinguished School as well as an NCLB National Blue Ribbon School. Science, music, health, and art are important components of the curriculum. A school-wide Positive Behavior Support Plan has been established to recognize students for their positive behavior. The acronym HONOR stand for Honest, On time, Noble, On task, and Respectful/Responsible.

Mission Statement: "To lead each student to recognize their greatest gifts and to reach their highest potential."



# Venado Middle School



4 Deerfield Avenue | Irvine, CA 92604  
Site Analysis

### General Condition & Infrastructure

- Old lighting (high pressure sodium) slow to turn on; not a lot of natural daylight throughout
- Need more storage space on server and increased bandwidth
- Need better ways to separate public spaces from private when used by community
- Graffiti is an issue on weekends/vacations
- Issues with air quality in Classrooms
- Insufficient lights in parking area
- Portables are old and ready for replacement

### Building Systems

- HVAC is provided by an air handler that was installed during 2005 modernization
- Chiller is 1995 vintage and in OK shape
- All equipment is controlled by Carrier EMS
- School has photovoltaic panels

### Landscaping and Outdoor Spaces

- Central courtyard has planter walls, but not adequate shade aside from lunch seating; may hinder use for outdoor learning
- Could use more functional landscaping to support outdoor learning opportunities
- Other areas around building provide either little shade or inadequate seating
- Inadequate PE facilities for inclement weather

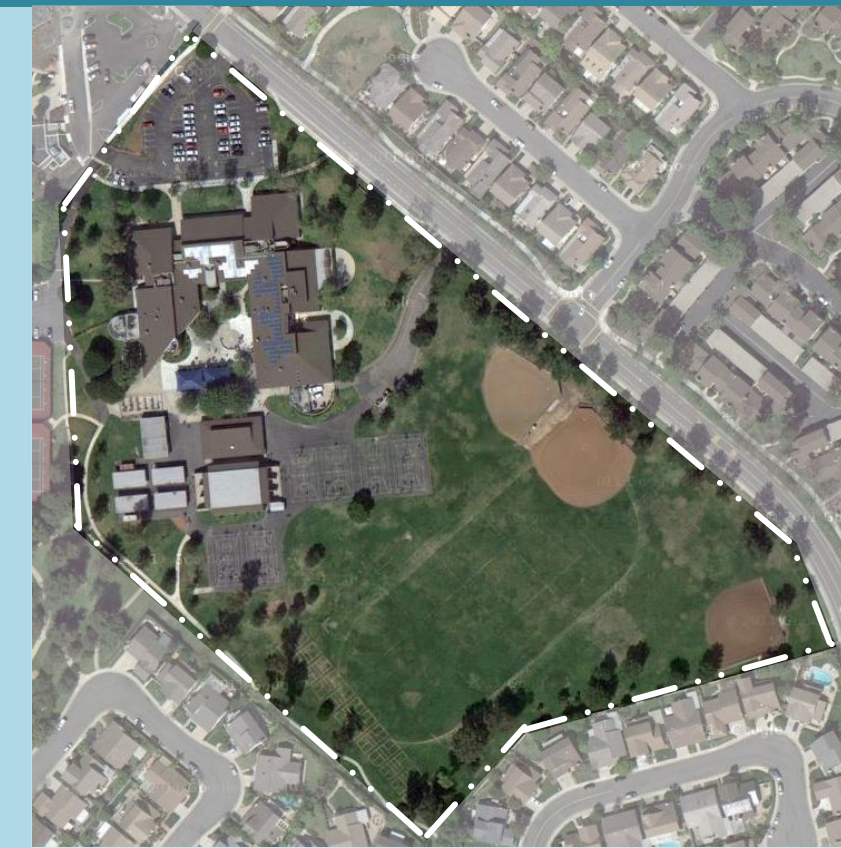
### Vehicular Access/ Parking/ Drop-Off

- Congested parking lot due to shared use with elementary school

### School Pride

- Foyer used to display school/ student achievements; student work displayed throughout first floor

LPA





**SCHOOL STATISTICS**

|                     |        |
|---------------------|--------|
| Grades:             | 7-8    |
| Building SF:        | 65,112 |
| Portable SF:        | 5,940  |
| 2010/11 Enrollment: | 652    |
| Existing Capacity:  | 845    |
| Year Built:         | 1976   |
| Modernization:      | 2004   |
| Site Acreage:       | 17.3   |
| # Portables:        | 6      |

**CLASSROOM COUNT**

|                                 |           |
|---------------------------------|-----------|
| General Classroom (4 Portables) | 14        |
| Art                             | 1         |
| Science (1 Portable)            | 4         |
| Music*                          | 0         |
| Special Ed./DHH/SAI/SDC         | 8         |
| Elective (1 Portable)           | 1         |
| Physical Education              | 1         |
| Computer Lab                    | 2         |
| Shop Class                      | 1         |
| <b>TOTAL</b>                    | <b>32</b> |

\*Stage too small to be full classroom; MPR used for music classes

**MEASURES OF QUALITY -**

| MEASURES OF QUALITY -                      | +       |
|--|---------|
| Wayfinding/ Entry/ Welcome                 | ○ ● ○ ○ |
| Natural Daylighting                        | ● ○ ○ ○ |
| Controllability (Daylight, Lighting, HVAC) | ○ ● ○ ○ |
| Flexibility in Classrooms                  | ○ ● ○ ○ |
| Access to Technology                       | ○ ● ○ ○ |
| Collaboration                              | ○ ● ○ ○ |
| Student Display                            | ○ ● ○ ○ |
| MPR  | ○ ● ○ ○ |
| Library/ Media                             | ○ ● ○ ○ |
| Functional Landscaping                     | ○ ● ○ ○ |
| Energy Consumption                         | ○ ○ ● ○ |
| General Condition                          | ○ ● ○ ○ |

**LEGEND**

- Main Entry
- Secondary Entry
- Circulation
- Drop-Off
- Playfields/ Landscape
- Hardcourts
- Parking
- Trees

**UTILIZATION LEGEND**

- Physical Education
  - Classroom
  - Science/ Art Lab
  - Specialty Classroom
  - Special Ed Classroom
  - Portable (Color based on Program)
  - Other Spaces
- CR Regular Classroom
  - C Commons
  - S Science
  - A Art
  - M Music
  - E Elective
  - LR Locker Room
  - AD Advisement
  - SDC Special Education
  - PS Project Success
  - DHH Deaf & Hard of Hearing Prog.
  - PE Physical Education
  - Shop Shop Classroom
  - Comp. Computer Lab





Front Entry



Main Entrance



Parking Lot



Service Entrance



Bike Racks



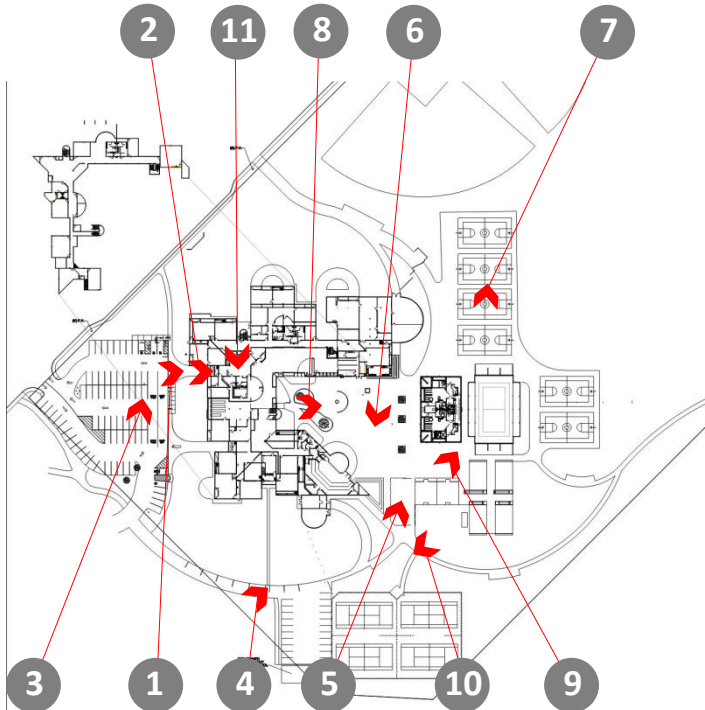
Lunch Shelter



Basketball courts near play fields



Planters in courtyard



KEY MAP



Covered basketball courts, lockers, outdoor sports courts



Walkway to tennis courts



Main Office



12 Main Office waiting area



13 Teacher workstation



14 Conference Room A



15 Conference Room B



16 Administrative Assistant's office



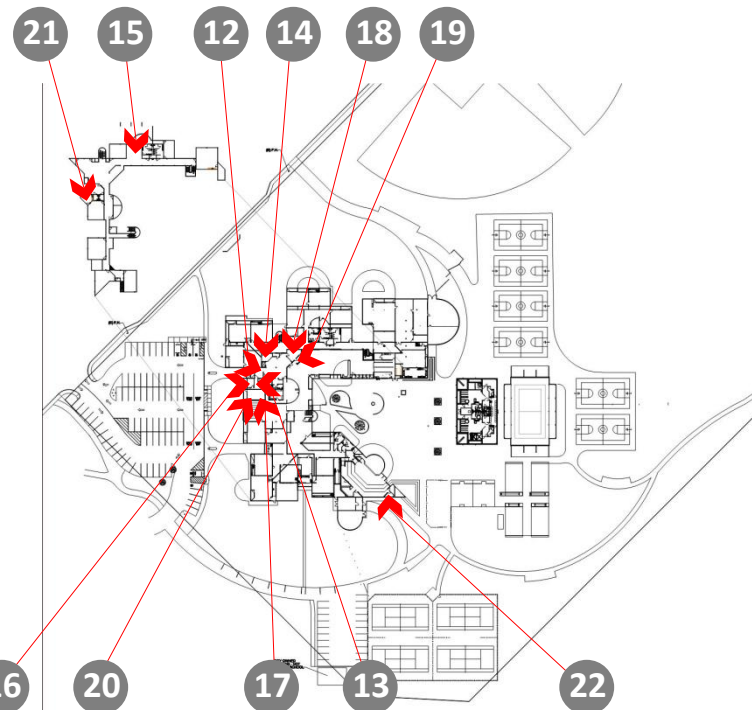
17 Principal's conference room



18 Assistant Principal's office



19 Security Office



KEY MAP



20 Typical administrative office



21 Shared teacher workstation



22 Music Office



Library

Library workstation

Computer Lab

MPR stage



Instrument storage #1

Instrument storage #2

Theater Office

Typical classroom



KEY MAP



Typical science classroom

Audiology classroom

Computer stations on second floor





34

Science classroom



35

Art classroom



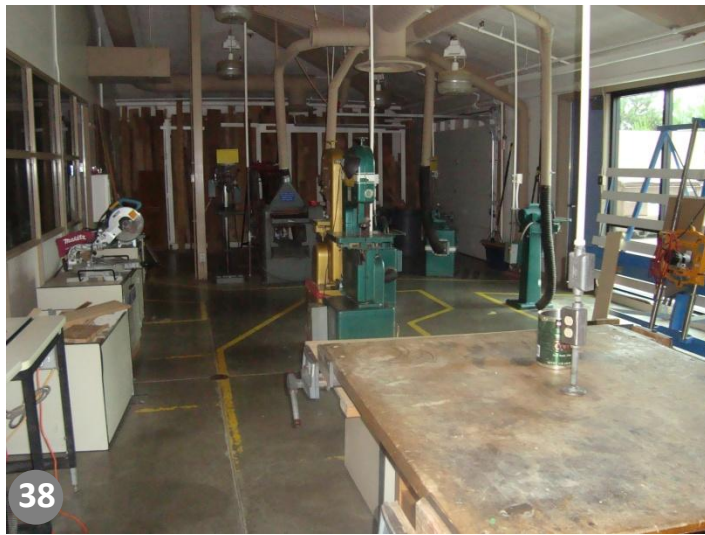
36

Art studio



37

Ceramics



38

Tech Lab



39

Typical portable classroom



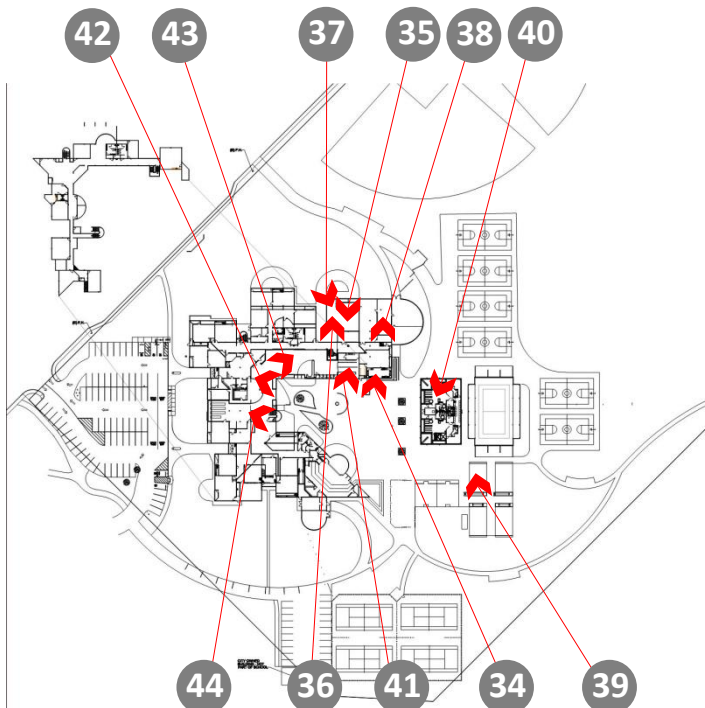
40

Boy's Locker Room



41

Food Service



KEY MAP



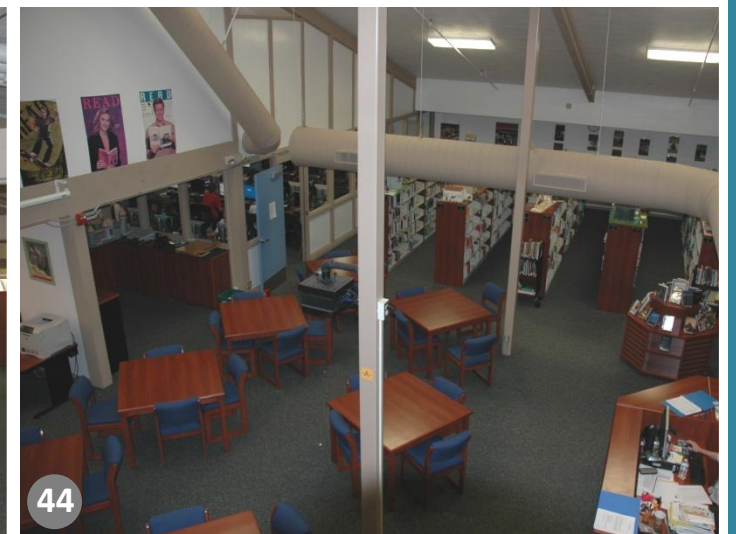
42

View of second floor from main floor



43

Open area on first floor near food service



44

View of library from second floor