

CAMPUS OBSERVATIONS

Classrooms

- Classrooms are flexible, although somewhat cramped due to large class sizes; some classrooms have chairs, but no desks, due to lack of space
- Science labs are adequate and working well for current enrollment
- Classrooms in 200 and 500 buildings need better acoustical separation
- Special Education grouped and integrated with General Ed.; campus houses DHH program

Library/ Media

- Aesthetically pleasing but small; computer area small
- Library described as adequate for future needs

- Storage may become issue due to addition of AP books

Food Service

- Food court too small; long lines
- Need for additional satellite carts throughout campus

Performing Arts

- Music program severely limited due to space constraints and use of music facilities (e.g., MPR) by entire school
- Cannot accommodate current growth of instrumental music programs
- Multi-Purpose Room used as classroom for instrumental music; need an additional classroom and storage space
- Current location of football/coaching office and equipment room is encroaching upon music classrooms

Admin & Support Spaces

- Administrative space currently adequate but may not be, if higher enrollment
- Lack staff workrooms for each department. Additional workrooms desired; one centralized workroom is not sufficient to support 100 person teaching staff; also, may not be convenient for teachers to access between classes
- Career center not large enough to accommodate amount of students being served
- Lack of Offices - storage rooms used for offices (e.g., Security office)

CAMPUS OVERVIEW

University High School is one of four comprehensive high schools in the Irvine Unified School District, serving students in grades 9-12 and home of the Orange County Deaf and Hard of Hearing program. Newsweek named University the #8 school in the nation. It is situated next to William R. Mason Regional Park in a residential setting, not far from the I-405.

Adjacent to the main parking lot is the round building housing Administration for both General Ed. and the DHH program, Food Service, the Library/Media Center, multi-purpose rooms, and the Career Center and counseling offices. The Physical Education facilities are located to the north of the Administrative Building, near the basketball and tennis courts, track, and play fields. The Performing Arts theatre is centrally located on the site; southeast of it are a number of distinct classroom buildings that are organized in a confusing manner. The layout and circulation of the campus could be improved.

University High has an extremely strong academic program, "providing students with the means to acquire knowledge and develop habits of mind to prepare them for the world they will inherit." The school focuses on building skills in critical thinking/problem solving, communications and interpretation, artistic creation and aesthetics, national and international awareness, personal and social development, and interrelationships of Science, Technology, Mathematics and Society.

Mission Statement: "to enable each student to become a contributing member of society with an appreciation for complexity and ambiguity, empowered with the knowledge, skills, and values necessary to meet the challenges of a changing world by providing the highest quality educational experience [the school and its stakeholders] can envision."



University High School



4771 Campus Drive | Irvine, CA 92612
Site Analysis

General Condition

- Grounds and buildings are visually pleasing; layout and large site described as giving the school a nice "college feel" with grass and trees interspersed
- Campus organization and circulation could be improved
- Lack student work display areas

Building Systems

- HVAC is provided by various vintages of roof top gas/electric equipment; 1996 vintage Carrier and 1992 vintage Trane equipment are in poor condition; 2007 Carrier equipment should be re-commissioned
- Site is controlled by an Andover EMS
- Site has photovoltaic panels

Technology

- Desire for more specialized computer labs for Digital Arts program

- Maintenance and upgrade costs are concern, to support future program goals
- Need robust wireless network to enable integration of tech in classrooms
- Current infrastructure could be improved by upgrading capacity of switches/access points to enable several users simultaneous access

Non-Traditional Space Uses

- Storage room being used for LAN Tech
- Storage room used as security office
- Storage room used for Project Success counseling

Outdoor Spaces/Fields

- Need for more benches and seating areas for collaboration; some seat walls and tables near classroom buildings provide outdoor learning opportunities
- Athletics facilities support current needs due to continuous work of M&O

- New stadium will be point of pride for school
- Interest in expanding size/depth of pool
- Addition of all-weather track and turf field will solve problems with field availability

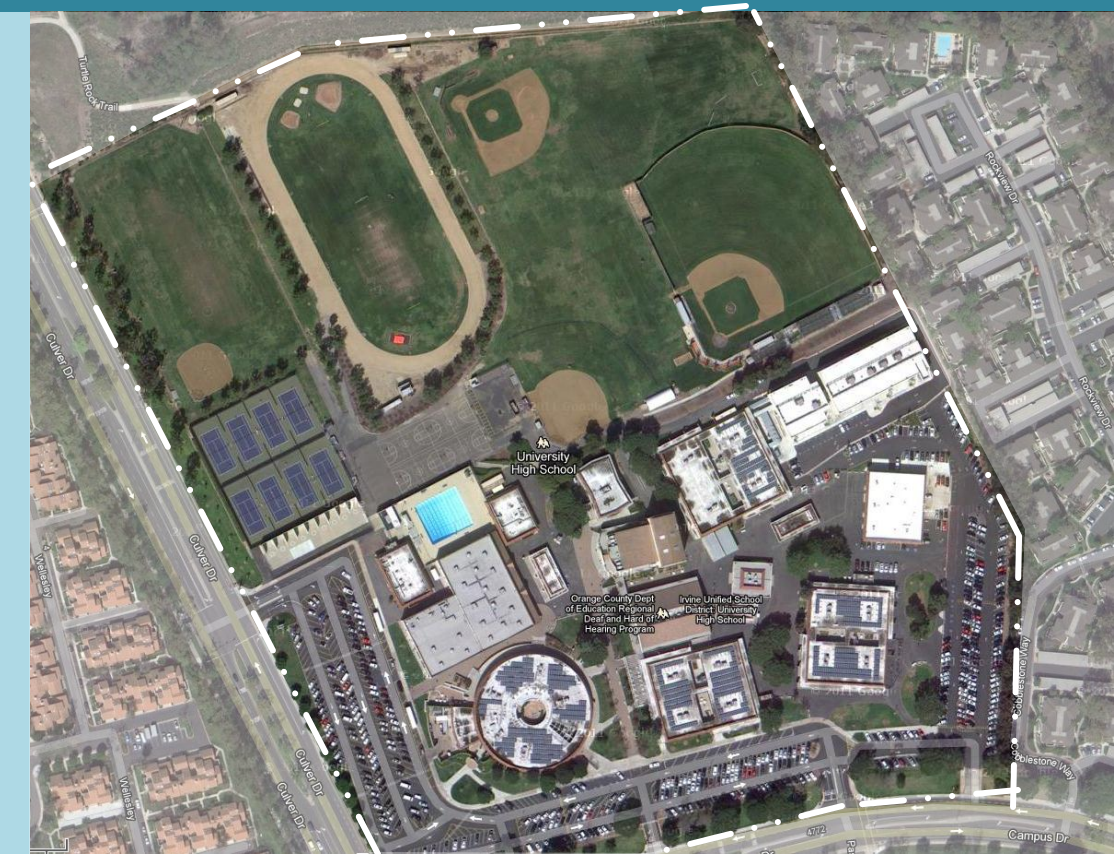
Specialty Spaces

- Reading/writing lab for at-risk 9th grade students
- CAHSEE prep classes
- Special Ed classes
- EL 1 and 2 classes
- Sheltered classes

Organizational Concerns

- Bell schedule limitations impacting program offerings (large class sizes and available space) and ability for students to fit all courses into regular schedule

LPA





Entrance to Admin. Building (near DHH offices)



Main Parking Lot, Student Parking



Central Gathering Space



Central Courtyard, Admin. Building



View of Admin. Building from Quad



Theatre



Music Building



Small Classroom Building (711-714)



KEY MAP



Courtyard between the two 200 Buildings



Outdoor Seating



Gymnasium Building



12

Science Building



13

View of Restrooms, 500 Building, & Theater (background)



14

Signage along 200 Building



15

View of New Building



16

400 Building (Unified Arts/Tech)



17

Ceramics Yard



18

Handball Courts



19

Track & Field



KEY MAP



20

Baseball Field



21

Basketball Courts and Hardcourts



22

Bike Racks



23

Administration Office



24

Waiting Area near AP Offices



25

Health Office



26

SRO/Attendance Office



27

Principal's Conference Room



28

Reprographic



29

Staff Mailboxes



30

Records Clerk



KEY MAP



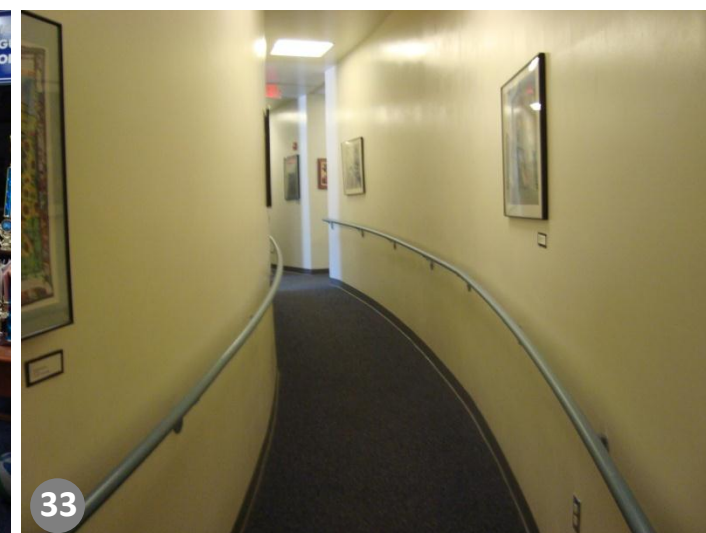
31

Front Office for DHH Program



32

DHH Principal's Office



33

Hallway from Administration to Teachers Center



34

Teachers Center



35

Teachers Lounge



36

Kitchen



37

Food Service



38

Multipurpose Rooms



39

Counseling Center



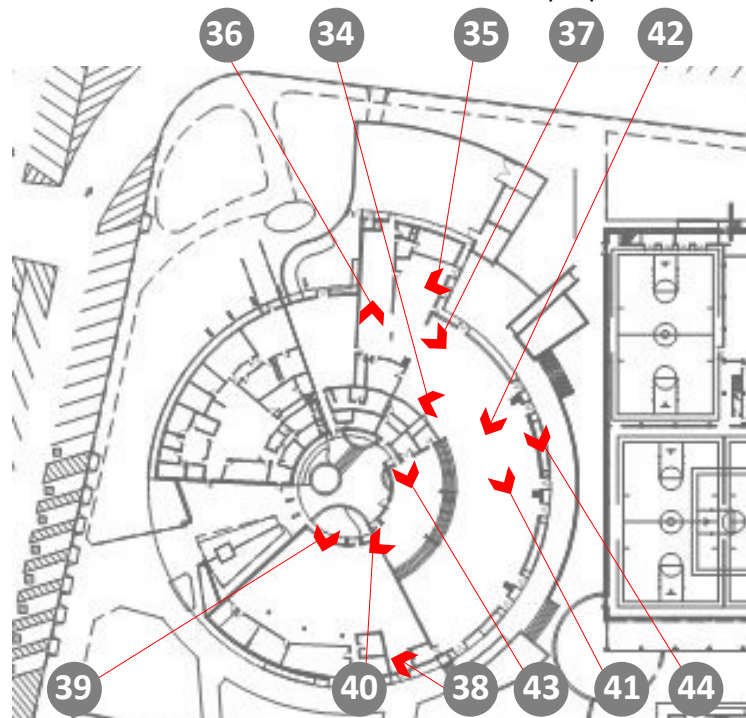
40

Career Center



41

Library Front Desk



KEY MAP



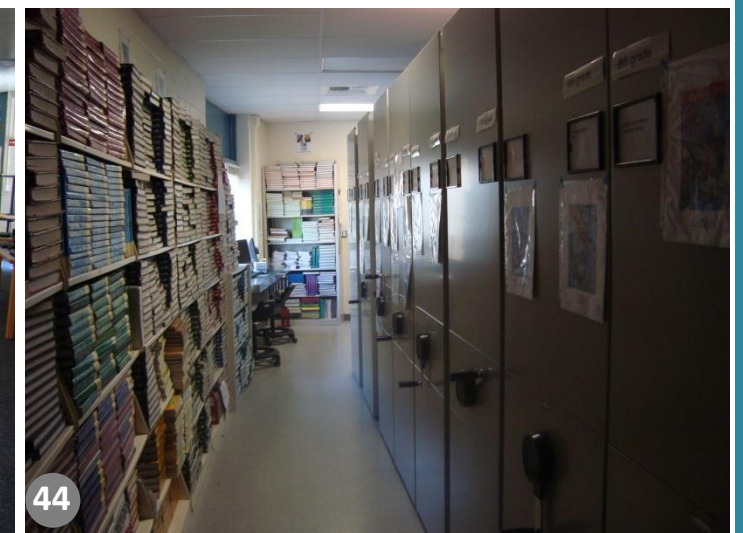
42

Library/Media Center



43

Platform Area in Library



44

Textbook Storage



Art Classroom



Language Lab (208)



Science Classroom (709)



Chemical Storage



Science Classroom (710)



Faculty Workroom (211)



Typical Classroom (713)



Typical Classroom (301)



KEY MAP



Classroom near Little Theater (214)



Little Theater



Hallway in New Building



Main Gymnasium



Small Gymnasium



Weight Room



Studio



Athletic Director's Office



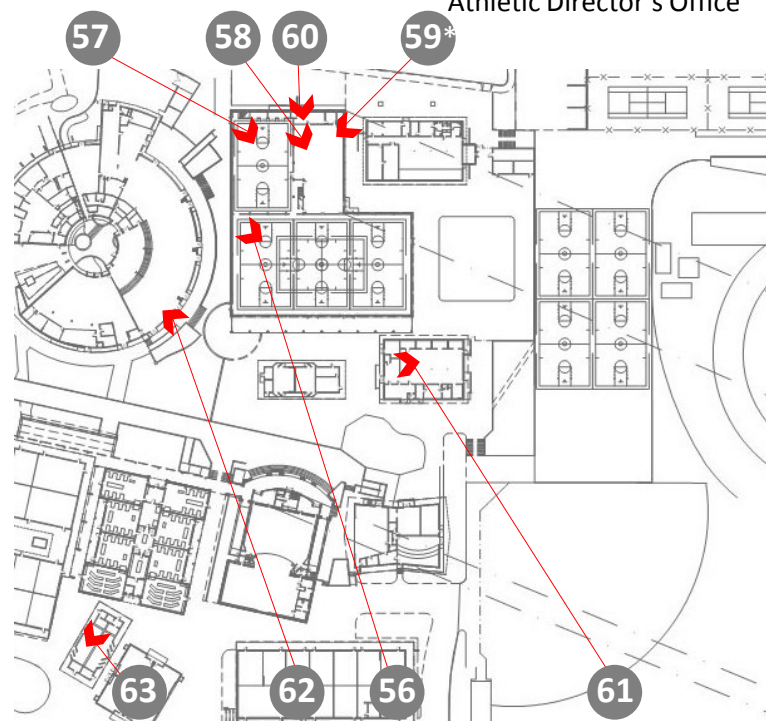
Girls Locker Room



Student Store



Typical Bathroom



*Second floor

KEY MAP