

## CAMPUS OBSERVATIONS

### Classrooms

- 2 Kindergarten classrooms and 1 classroom in first grade pod used as Kinder; lack activity center
- Classrooms in pods of 4 share small collaboration/ workroom space in center
- Two interior courtyards directly accessible by majority of classrooms; potential for outdoor learning area
- Classrooms small/inflexible; storage minimal
- 1 dedicated portable and stage for Music; lack of adequate space
- 1 Science in portable – insufficient for all science needs
- ELD/RSP classrooms located in portables, while APAAS located in main pods; ELD shares with Title 1; could use separate, dedicated spaces
- More classroom space needed to

support Rti more effectively

- No interior hallways; classroom access from exterior; no visual connectivity between rooms

### Library/ Media

- Located off of central courtyard at base of middle classroom wing
- No classrooms directly connect to the space; instead, access from classrooms using outdoor walkways and inner courtyards, or by walking around classroom wing

### Multi-Purpose Room

- Somewhat small/enclosed feel – not daylight
- Ability to open up stage to use as outdoor stage with large courtyard
- Stage does not have partition to be used as acoustically- separate classroom, but used for instrumental music ; used for other functions when not in use for music
- Directly adjacent to Administrative area (specifically, principal office, conference room, and psychologist office); potential for acoustical issues due to adjacency

### Food Service

- Is extremely small/inadequately-sized
- Queue has one (1) entry/ exit to outside and a moveable partition connection with MPR

## CAMPUS OVERVIEW

Turtle Rock Elementary School is a K-6 seasonal school situated in a quiet residential setting and is a short drive away from both Chaparral and Canyon Park. It is one of the few schools in the District that is fenced off from its surrounding neighborhood.

Each academic wing is organized in a pod configuration around a small central breakout/collaboration area with some classrooms also feeding into an outdoor courtyard. A larger exterior gathering space occurs in between the Multi-Purpose Room (MPR) and the Library with access to a sheltered lunch area, as well as the hard courts and playfields.

The Administrative area and the Multipurpose Room (MPR) are located toward the front of the campus with direct access to the main central courtyard. The MPR is equipped with a dual-purpose stage that opens to the interior and, which enables the stage to open to a central courtyard whenever there is a need or interest in connecting to the outdoors.

Turtle Rock is a California Distinguished School that supports a multitude of both regular curriculum and support courses, such as Early Childhood Literacy Project, Meet the Masters, and Family Math and Science. Emphasis in the curriculum is placed on language arts, mathematics, science and social studies, as well as an appreciation of the fine arts.

Mission Statement: To enable all students to become contributing members of society empowered with the skills, knowledge, and values necessary to meet the challenges of a changing world, by providing the highest quality educational experience we can envision.



# Turtle Rock Elementary School



5151 Amalfi Drive | Irvine, CA 92612  
Site Analysis

LPA

### Vehicular Access/ Drop-Off/Pick-up

- Parking lot may be somewhat small to accommodate all staff and visitors
- A number of benches in front may accommodate those waiting for pick-up

### Child Care

- Located in portables adjacent to fields

### Outdoor Areas

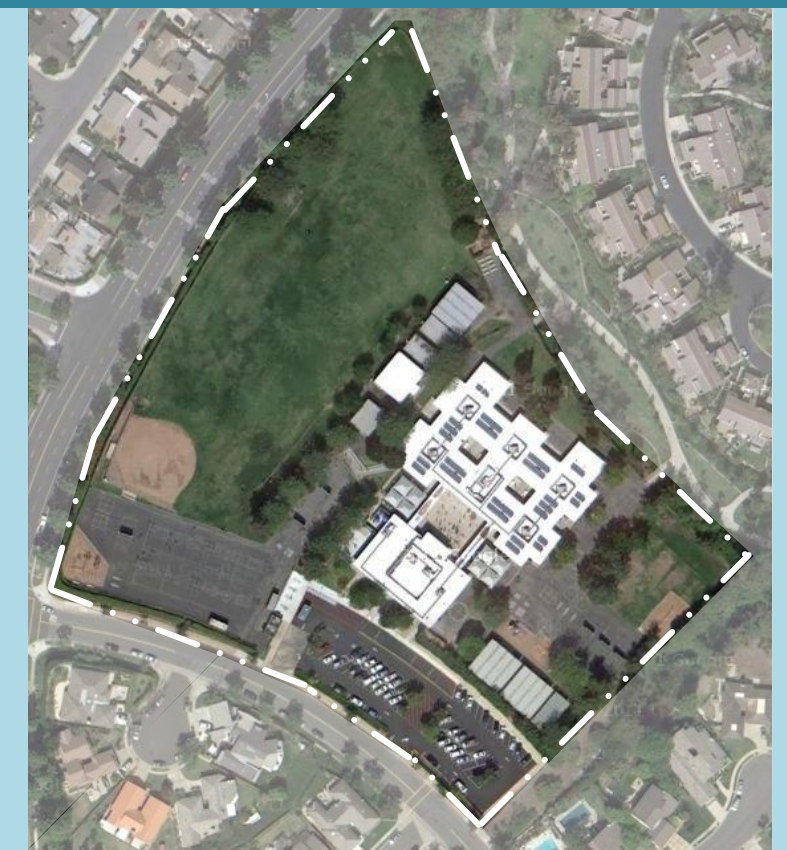
- Abundance of trees throughout site - shade opportunities; no shade over play areas
- Courtyards are very bare; could incorporate more displays, announcements, color, and/or landscaping features
- Hardcourts and playfields separated by main building

### Wayfinding

- Classrooms configured such that one must walk around exterior of building wings or inside small inner courtyards to find rooms
- All pods and classrooms look identical to one another; may be easy to become disoriented with respect to one's location in relation to the rest of the school

### Building Systems

- HVAC was replaced in 1994 modernization that installed multi-zone heat pumps
- These units have issues with outdoor coil degradation and are in poor condition
- All units are controlled by a Carrier EMS
- School has photovoltaic panels







### LEGEND

- Main Entry
- Secondary Entry
- Drop-Off
- Main Circulation
- Playfields/Landscape
- Hardcourts
- Play Apparatus
- Parking
- Courtyard
- Trees

### UTILIZATION LEGEND

- Kindergarten Classroom
  - Classroom
  - Science/ Art Lab
  - Specialty Classroom
  - Special Ed Classroom
  - Portable (Color based on Program)
  - Child Care (Portable)
  - Other Space
- 
- K Kindergarten
  - # Grade Level
  - S Science
  - A Art
  - M Music
  - RSP Special Ed/Resource
  - SE Special Education
  - Admin. Administration
  - Open Unused Classroom

### SCHOOL STATISTICS

Grades:	K-6
Building SF:	31,224
Portable SF:	11,520
2010/11 Enrollment:	821
Year Built:	1970
Modernization:	2005*
Site Acreage:	7.6
# Portables:	10 + 2CC

*\*Per Facilities Planning & Construction*

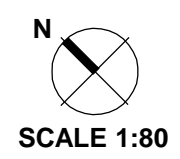
### CLASSROOM COUNT

Kindergarten	3
1 <sup>st</sup> & 2 <sup>nd</sup> Grade (4 + 4 Portables)	8
3 <sup>rd</sup> & 4 <sup>th</sup> Grade*	7
5 <sup>th</sup> & 6 <sup>th</sup> Grade*	8
Science (1 Portable)	1
Music (1 Portable)	1
Not Used (1 Portable)	1
RSP (2 Portables)	2
Title 1 (1 Portable)	1
Computer Lab	1
<b>TOTAL</b>	<b>33</b>

*\*One classroom per 4<sup>th</sup>-6<sup>th</sup> is APAAS  
\*\*MPR stage used as music room, no partition; not included in classroom count*

### MEASURES OF QUALITY -

Measure	+
Wayfinding/ Entry/ Welcome	○ ● ○ ○
Natural Daylighting	○ ● ○ ○
Controllability (Daylight, Lighting, HVAC)	○ ● ○ ○
Flexibility in Classrooms	○ ● ○ ○
Access to Technology	○ ● ○ ○
Collaboration	● ○ ○ ○
Student Display	● ○ ○ ○
MPR	○ ● ○ ○
Library/ Media	● ○ ○ ○
Functional Landscaping	○ ● ○ ○
Energy Consumption	● ○ ○ ○
General Condition	○ ● ○ ○







Front of School



Main Entrance



Walkway down to portables on northwest side of site



Parking Lot



Drop Off



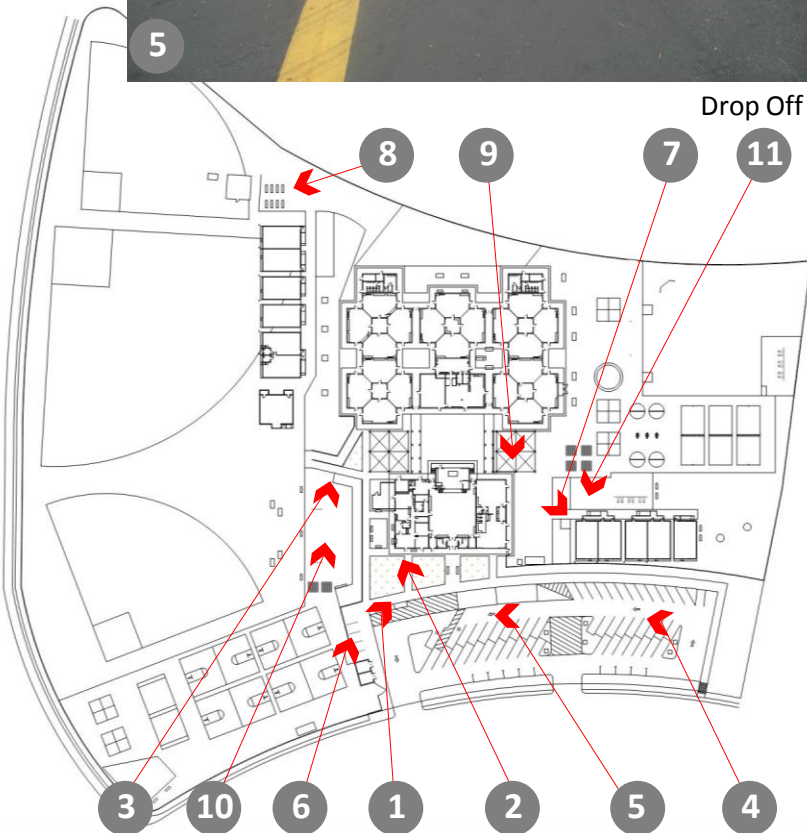
Bike Racks



Portables



Benches near Portables



KEY MAP



Covered Lunch Area



Hardball Courts



Play Apparatus







12

Basketball Courts showing play apparatus



13

Play Fields



14

Outdoor Stage



15

Main Office



16

Principal's Office



17

Staff Workroom



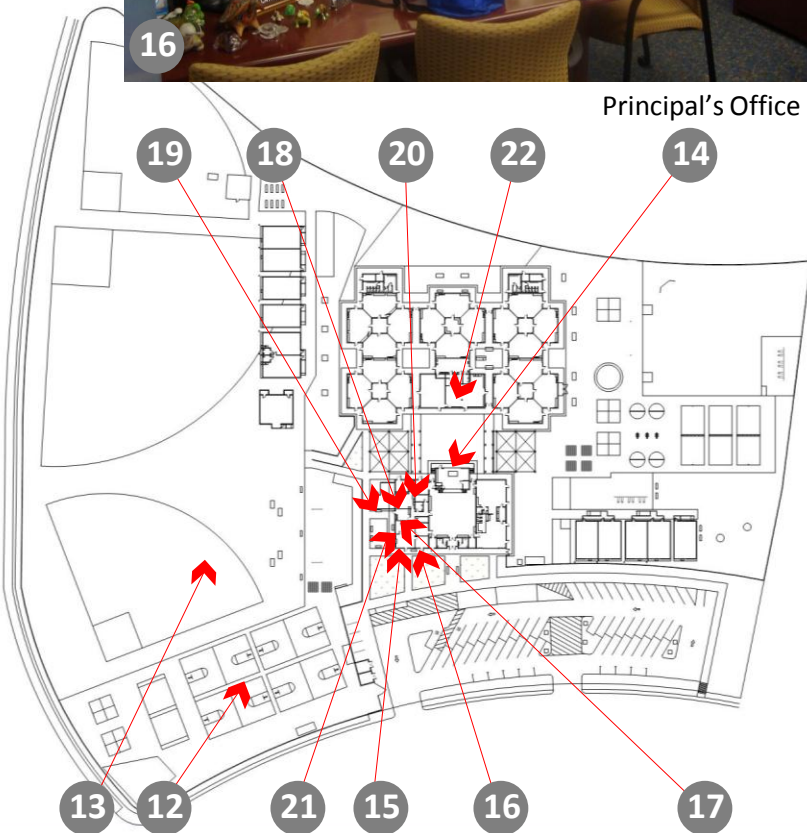
18

Staff Lounge



19

Staff Patio



KEY MAP



20

Psychologist Office



21

Health Office



22

Library







Computer lab



Copy room



MPR



Food service



Typical Kindergarten classroom



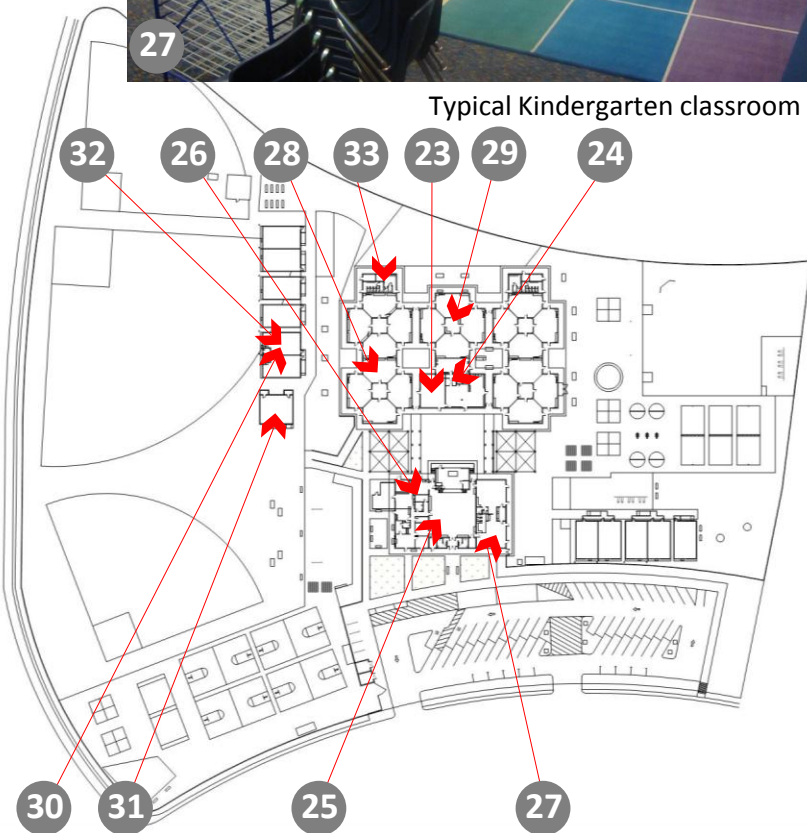
Typical classroom



Central collaborative/workroom/storage space



Science Portable



KEY MAP



Typical Childcare Portable



Window Decoration in Portable



Typical Bathroom