

CAMPUS OBSERVATIONS

Classrooms

- Lack of adequate Kinder classrooms. Two with restrooms plus one (1) breakout space used as K classroom, and one (1) first grade classroom used as K
- Three main classroom wings, each with classrooms and shared collaboration/breakout space central to the wing/pod
- Collaborative space large, but potentially loud with large groups or varied activities
- No shades/blinds in classrooms; natural light that enters may be difficult to control
- Rooms have doors to exterior but no outdoor learning spaces observed
- Staff needs more floor drops and smart, un-tethered technology
- Special Ed classrooms seem integrated
- Only 1 dedicated Science classroom

- Art room will be a 2/3 combo classroom
- 3 open rooms; will be used next year due to increase in enrollment.
- Three (3) Portable classrooms recently added

Library/ Media

- Centrally located and accessible by all classroom wings
- Computer lab in Media Center
- Spaces feels inviting; a lot of light
- Could differentiate areas for activities

Food Service

- Adequate in size; two doors for entry/exit
- Students can queue in central, covered walkway; extends the length of the school. One of the better queuing areas
- Lunch shelter provides shade only, not rain shelter

Multi-Purpose Room

- Ability to open to outdoor space in central courtyard near Oak Tree
- Stage can be used as classroom behind moveable partitions
- A lot of daylight, large skylight

Administration & Teacher Workrooms

- Spacious front office, workroom, lounge, outdoor covered patio for staff
- Health adequate space: two cots, two desks
- Each wing could use separate copying areas

CAMPUS OVERVIEW

Stonegate Elementary School is a K-6 school located in the Woodbury neighborhood, in the northeastern area of Irvine. The school is directly adjacent to land that is currently under development. It is close to the 133 toll road, between Portola Parkway and Irvine Boulevard, and serves the communities of Stonegate, Portola Springs, and Woodbury.

The Administrative area and the Multipurpose Room (MPR) are located toward the front of the campus near the big Oak Tree, with covered walkways leading to the Library/Media Center and Classroom wings. With the exception of the Kindergarten wing, each academic wing is organized in a pod configuration around a central breakout/collaboration area that feeds directly into the centrally-located Library and Media Center. Each classroom is equipped with a document camera, airliner and LCD projector.

Stonegate is an eco-friendly Green school “committed to educating the ‘whole child’ through a strong academic focus on the state content standards in each subject area, curriculum consistency among grade levels, high behavior standards, and consistent discipline. In addition, [the school] helps prepare students ethically, socially, and technologically for success in our global society.

Mission Statement: To be a family-friendly school, where children and learning are the first priorities. Stonegate has a strong sense of purpose and provides a stable, secure environment where parents and families feel at home and know their children will receive the best possible education



Stonegate Elementary School



100 Honors | Irvine, CA 92620
Site Analysis

General Condition

- Great condition; built in 2009

Building Systems

- Equipment is brand new high efficiency carrier gas/electric equipment controlled by a Carrier energy management system
- Site does not have photovoltaic panels

Vehicular Access/ Parking/ Drop-Off

- Large parking lot has main drop-off area
- Second parking lot /drop-off for child care

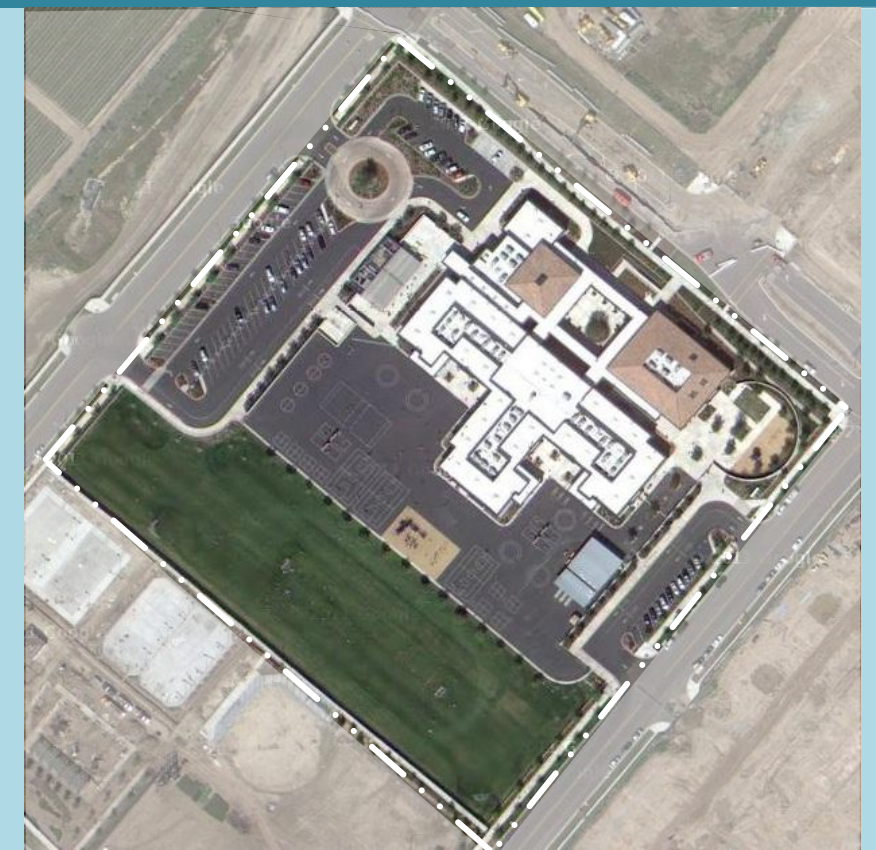
Child Care

- Located on the perimeter in portables
- Separate parking and drop-off

Wayfinding

- Somewhat difficult to find main building entrance; not directly adjacent to main parking lot
- Signage to main office very small
- Layout fairly easy to navigate, with wood soffits marking building entrances
- Subtle color differences at entry to each pod from the central Library, help those familiar with their wing to differentiate it from others

LPA





SCHOOL STATISTICS

Grades:	K-6, yr round
Building SF:	58,193
Portable SF:	5,760 SF
2010/11 Enrollment:	618
Year Built:	2009
Modernization:	(2024)
Site Acreage:	10.1
# Portables:	3 + 3 CC

CLASSROOM COUNT

Kindergarten*	4
1st & 2nd Grade	7.5
3rd & 4th Grade	6.5
5th & 6th Grade	4
Science	1
Music** (1+ 1 Stage)	2
Not Used/ Open	3
RSP/ELD	2
(3 New Portables)	3
Computer Lab	1
TOTAL	34

*K Activity Center currently used as classroom
**MPR is used for music classes, not included in classroom count

MEASURES OF QUALITY - +

Wayfinding/ Entry/ Welcome	○ ○ ● ○
Natural Daylighting	○ ○ ● ○
Controllability (Daylight, Lighting, HVAC)	○ ○ ● ○
Flexibility in Classrooms	○ ○ ● ○
Access to Technology	○ ○ ● ○
Collaboration	○ ○ ● ○
Student Display	○ ○ ● ○
MPR	○ ○ ● ○
Library/ Media	○ ○ ● ○
Functional Landscaping	○ ● ○ ○
Energy Consumption	○ ○ ○ ●
General Condition	○ ○ ○ ●

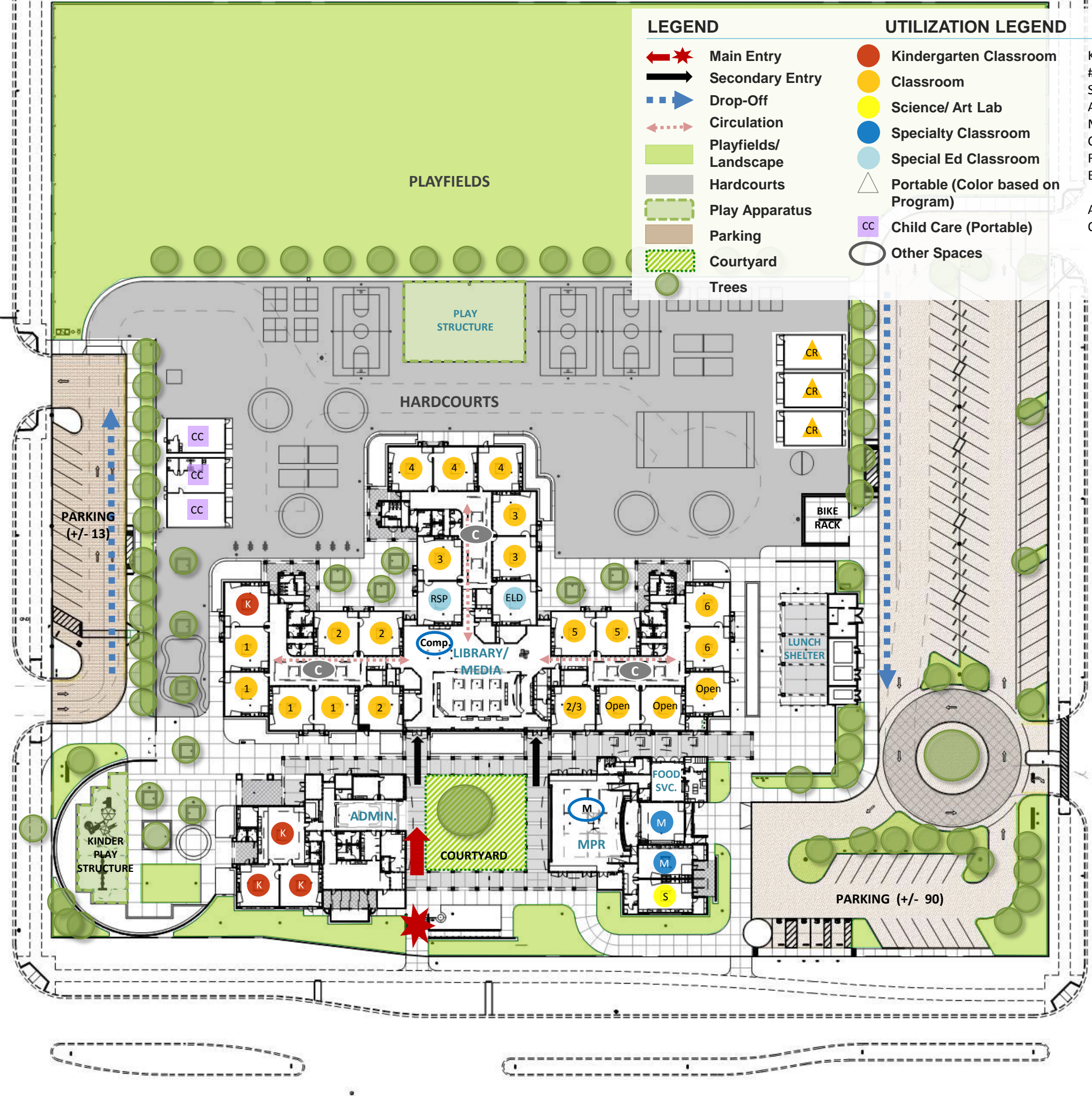
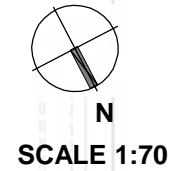
LEGEND

- ←★ Main Entry
- Secondary Entry
- Drop-Off
- Circulation
- Playfields/ Landscape
- Hardcourts
- Play Apparatus
- Parking
- Courtyard
- Trees

UTILIZATION LEGEND

- Kindergarten Classroom
- Classroom
- Science/ Art Lab
- Specialty Classroom
- Special Ed Classroom
- △ Portable (Color based on Program)
- CC Child Care (Portable)
- Other Spaces

- K Kindergarten
- # Grade Level
- S Science
- A Art
- M Music
- C Commons
- RSP Special Ed/Resource
- ELD English Language Learners
- Admin. Administration
- Open Unused Classroom





1 Front of School



2 Main Entrance



3 Central Courtyard with Oak Tree (often-referenced landmark)



4 Parking & Drop-off



5 Separate Parking and Drop-off near Childcare portables



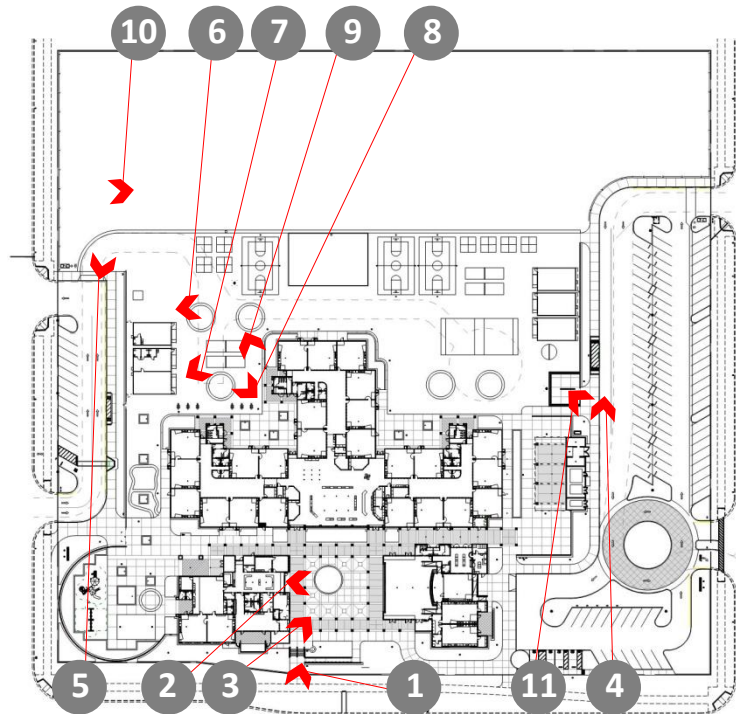
6 Shaded outdoor seating area near Portables



7 Portables



8 Classroom Courtyard Area



KEY MAP



9 Hardcourt Area



10 Playfields



11 Bike Racks



Kindergarten play apparatus



Small instructional garden



Outdoor seating near classrooms



Outdoor access/entry to Food Service



Lunch Shelter



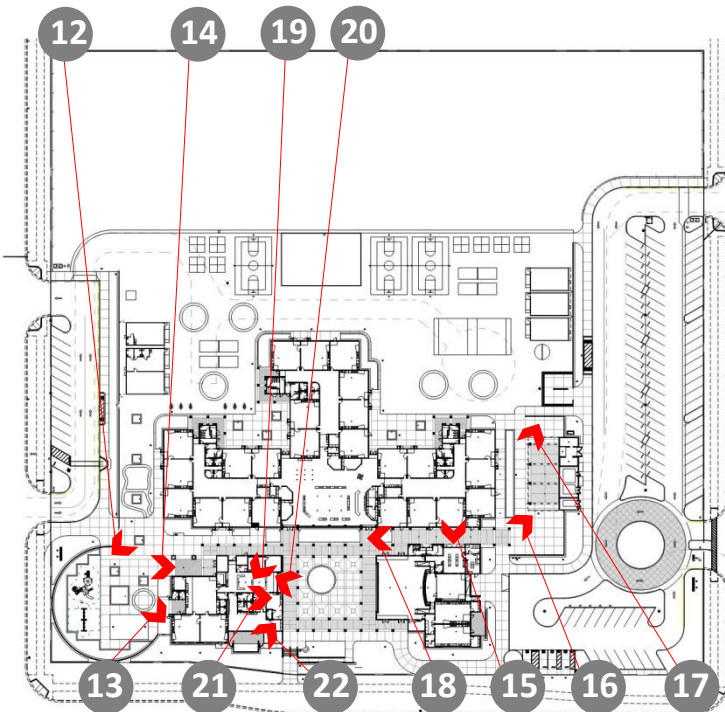
Student tile artwork



Central walkway and landscaping



Main Office



KEY MAP



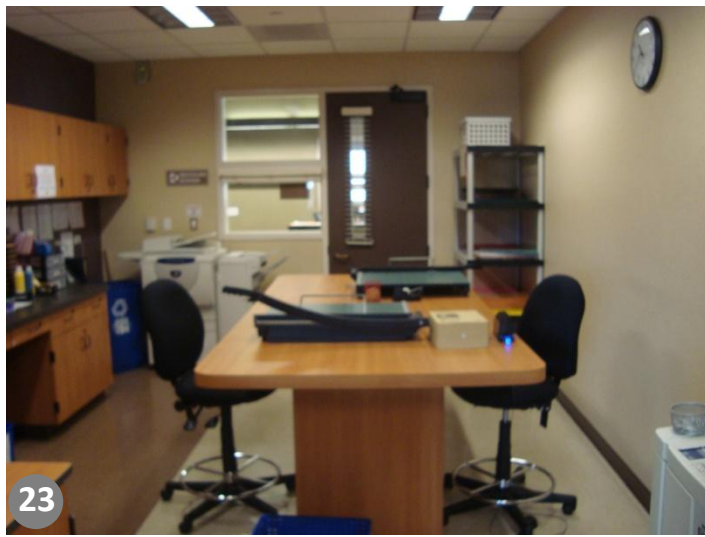
Waiting Area



Health Office



Staff storage area



Staff Workroom



Staff Lounge



Staff Patio outside Lounge



Speech Room near Library/Media Center



Library/Media Center



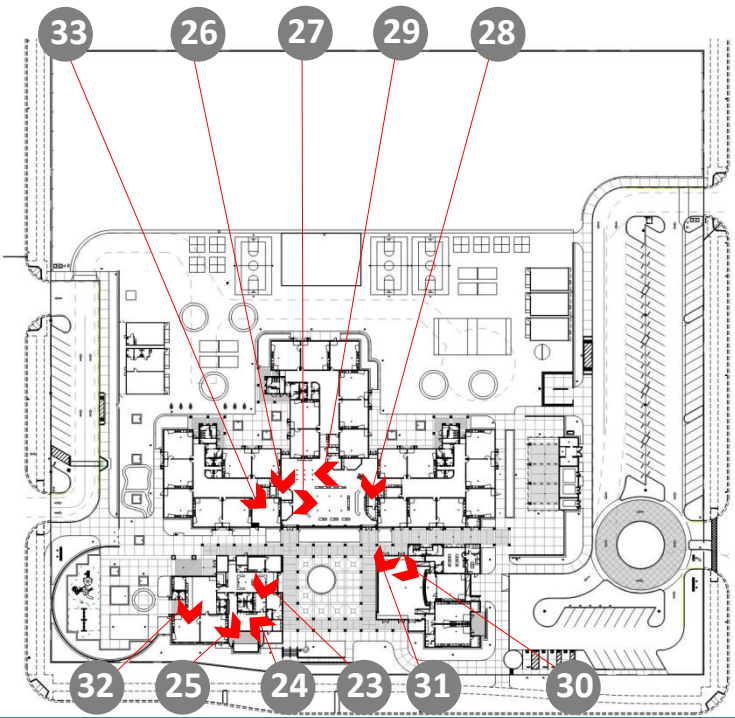
Media Workroom



Computer Stations in Library



MPR Stage



KEY MAP



Indoor/Outdoor Connection in MPR



Typical Kindergarten Classroom



Typical Classroom



Science Classroom



Hallway to Pod



Typical Student Collaborative Area between classrooms



Typical Satellite Workroom off of Student Collaborative Area



Typical Bathroom



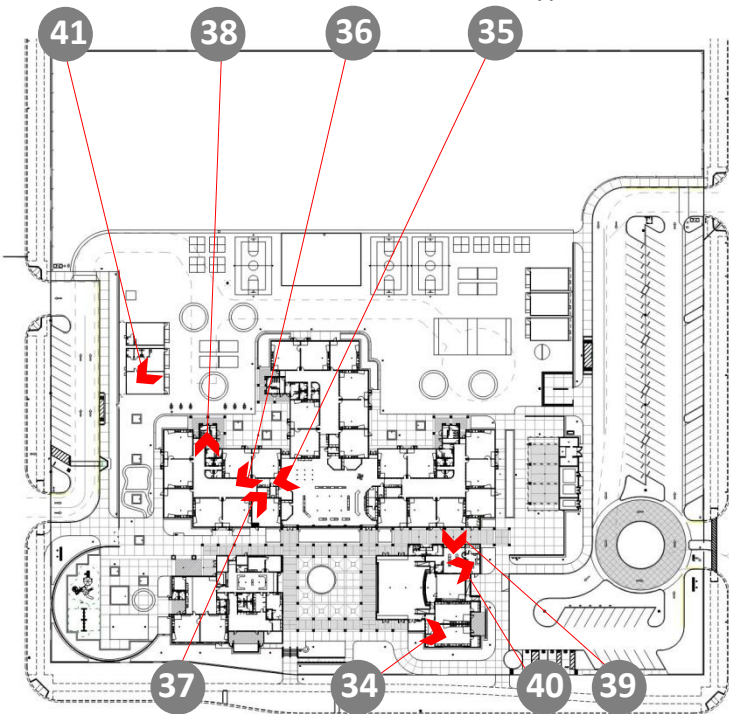
Food Service



Kitchen



Childcare Portable



KEY MAP

