

## CAMPUS OBSERVATIONS

### Classrooms

- Two (2) general Kinder classrooms, and one Montessori Kinder classroom
- Classrooms have nice daylighting, small reading alcoves, and storage space; insufficient space for in-class desktops
- Five classrooms for Montessori program
- One hallway has computer stations; other three hallways would benefit from this as well (or counters for laptops)
- Hallways/pods could use furniture to support collaboration and/or study
- One (1) dedicated Science classroom
- One (1) dedicated music classroom; need for more
- Classrooms have access to outdoor areas, but need more tables for outside learning
- Special Ed Classrooms seem integrated
- No dedicated Art Lab

### Collaborative Spaces

- Intervention groups have sufficient space in primary but not in upper grade wing
- Exterior portables do not have space for teacher collaboration
- Two pods used for SLC and music

### Library/ Media

- Centrally located, adjacent to MPR; potential noise issues
- Open layout described as supportive of more modern library concept
- No book supply room

### Food Service

- Meets current needs; would need more storage if school served breakfast
- Food service not located near service entry; deliveries go through front office
- One (1) door for entry/ exit
- Lunch seating area lacks shade; no structure and trees provide minimal shade

### Multi-Purpose Room

- MPR space used for music classes
- Open side by office needs doors to regulate noise
- Blinds are in need of repair
- Inability to open to outdoor space.
- Stage cannot be used as acoustically-separate classroom
- School has outdoor amphitheater

### Admin & Support Spaces

- Adjacency with MPR creates disruptions in office due to noise and vice versa; sliding window on office is desired to control office noise
- Lounge furniture is over 20 years old and needs to be replaced
- Teachers prep in workroom or work areas outside their classrooms
- Desire space for parent educational materials and parent volunteers

## CAMPUS OVERVIEW

Springbrook Elementary School is a K-6 seasonal school located in a quiet residential setting within the Yale Loop and with quick access to the 405. The school is situated next to Wood Flower Park, a public park with aquatic facilities.

The Administrative area is located toward the front of the school, directly adjacent to the parking lot. Beyond the main office is the Multipurpose Room (MPR), which is not an acoustically separate space, and the Library/Media Center further down the hall. Indoor and outdoor small-group collaboration areas exist at the ends of the main circulation hallway. The classrooms form double-loaded corridors in four main wings off of the main circulation pathway, and those hallways provide areas for small group collaboration, intervention, and in some instances, computer use. At the end of two of the hallways, permanent portables (and one non-permanent portable) have been added to support the educational program.

Springbrook is a California Distinguished School. It has a strong academic program and strives to provide students with the skills they need to become proficient and competent learners, effective communicators, motivated lifelong learners, thoughtful and positive members of the school community, and experienced practitioners in responsibly using the varied resources that are available to them.

Mission Statement: to enable all students to become contributing members of society empowered with the skills, knowledge, and values necessary to meet the challenges of a changing world, by providing the highest quality educational experience the school and its stakeholders can envision.



# Springbrook Elementary School



655 Springbrook North | Irvine, CA 92614  
Site Analysis

### Aesthetics & General Perceptions

- Skylights and pods create an open feel in the school, with daylighting throughout
- Openness, large trees, outdoor areas, and natural light described as connecting the school to the natural environment

### Building Systems

- All equipment is original with the exception of the multi-zone unit serving the front office
- Barrington controls and all units should be replaced
- Site has photovoltaic panels
- HVAC is in poor condition; weekly repair requests

### Technology

- One computer lab has 33 computers; Library has 12 computers; two small mini-labs have outdated equipment

- Not enough space for (desktop) computers in classrooms
- Teachers each have computer and projector; four teachers have document cameras; school will increase number of document cameras, wireless, and netbooks in classrooms
- Need for more teacher technology to support teaching of technological literacy and citizenship
- Projection screens are not mounted for best instruction in classrooms

### Outdoor Areas

- Many large planters and seat walls; opportunities for outdoor collaboration
- Basketball hoops appropriate height for younger children; need court for 6<sup>th</sup> graders with appropriate hoop height
- Need for play structure that builds upper body strength

- One play apparatus cannot adequately support 1<sup>st</sup>-6<sup>th</sup> graders (diff. sizes/abilities)
- One PE storage area could use better shelving
- Kindergarten yard small, with no grass; desire to move bike racks elsewhere and expand Kinder play space

### Safety & Supervision

- Community use of MPR, library, and pods after school is difficult to monitor

### Vehicular Access/ Parking/ Drop-Off

- Parking too small to accommodate staff, volunteers, and visitors
- Additional small parking lot for staff

### Child Care

- Located in portables toward back of site; no separate drop-off

LPA







SCHOOL STATISTICS

Grades:	K-6
Building SF:	43,785
Portable SF:	2,880
2010/11 Enrollment:	581
Year Built:	1989
Modernization:	(2014)
Site Acreage:	8.0
# Portables:	7* + 2 CC
*6 portables are modular construction	

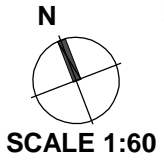
CLASSROOM COUNT

Kindergarten	3
1st & 2nd Grade	6
3rd & 4th Grade	5.6
5th & 6th Grade	4.3
Science	1
Music*	1
Title 1/ELD (1 Portable)	1
RSP	2
SAI	2
Computer Lab	1
<b>TOTAL</b>	<b>27</b>

\*Stage/MPR area and two pod spaces used for Music classes as well; not included in count

MEASURES OF QUALITY - +

Wayfinding/ Entry/ Welcome	○ ○ ● ○
Natural Daylighting	○ ○ ● ○
Controllability (Daylight, Lighting, HVAC)	○ ● ○ ○
Flexibility in Classrooms	○ ○ ● ○
Access to Technology	○ ● ○ ○
Collaboration	○ ○ ● ○
Student Display	○ ○ ● ○
MPR	○ ● ○ ○
Library/ Media	○ ○ ● ○
Functional Landscaping	○ ○ ● ○
Energy Consumption	● ○ ○ ○
General Condition	○ ○ ● ○



LEGEND

- ←★ Main Entry
- Secondary Entry
- Drop-Off
- Circulation
- Playfields/ Landscape
- Hardcourts
- Play Apparatus
- Parking
- Trees

UTILIZATION LEGEND

- Kindergarten Classroom
- Classroom
- Science/ Art Lab
- Specialty Classroom
- Special Ed Classroom
- △ Portable (Color based on Program)
- CC Child Care (Portable)
- K Kindergarten
- # Grade Level
- S Science
- A Art
- M Music
- RSP Special Ed/Resource
- SE Special Education
- Admin. Administration
- Comp. Computer Lab/Area
- Mont. Montessori Program
- Open Unused Classroom





Front Entry



Main Entrance



Second Entrance



Parking and Drop-off



Service Access



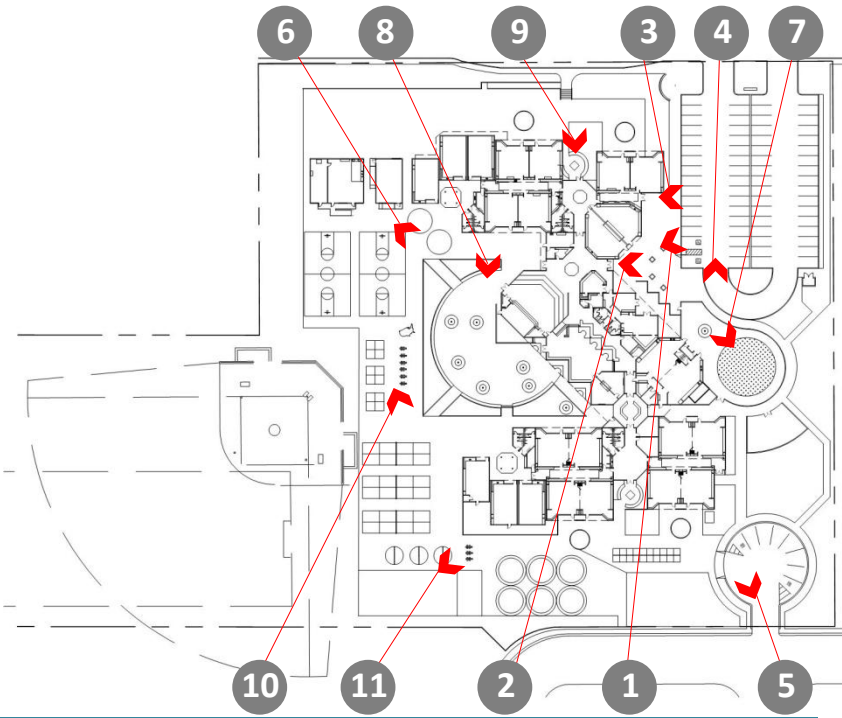
Portable



Kindergarten Play Apparatus



Central Courtyard & Lunch Area



KEY MAP



Typical Classroom Courtyard

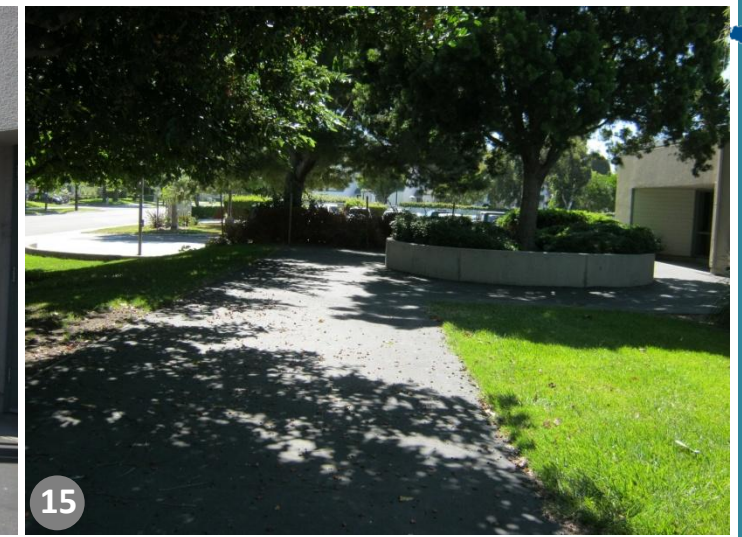


Hardcourts



Play Apparatus





Playfields

Kindergarten Area

Outdoor Collaboration Area

Grassy, Shaded Area near Classrooms



16

17

18

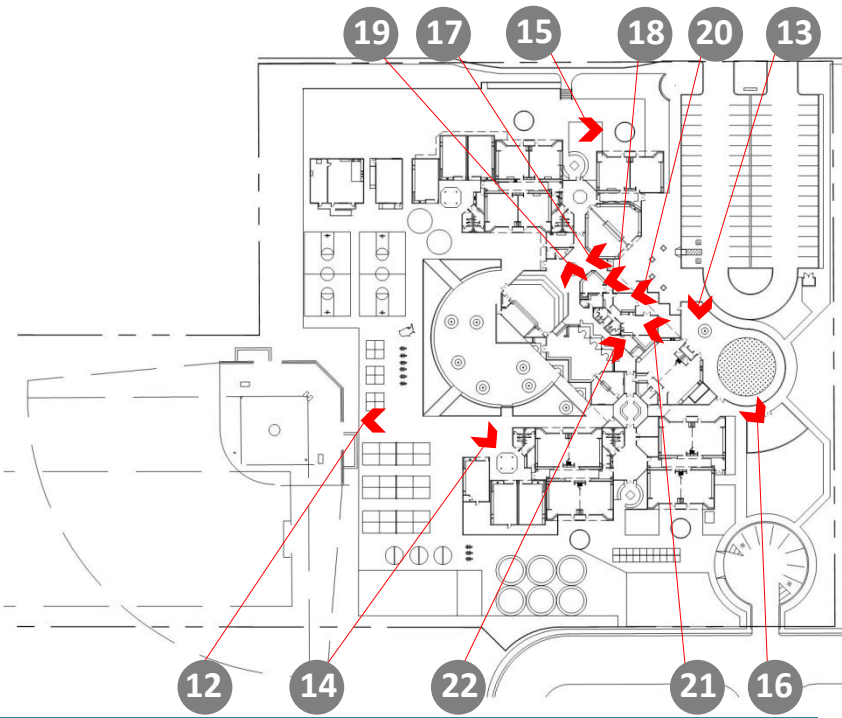
19

Bike Racks

Front Lobby

Main Office and Door to Health Office

Waiting Area



KEY MAP



20

21

22

Principal's Office

Staff Lounge

Conference Room







Staff Workroom



Kitchen in Staff Lounge



Storage Room



Library/Media Center



Computer Stations in Library



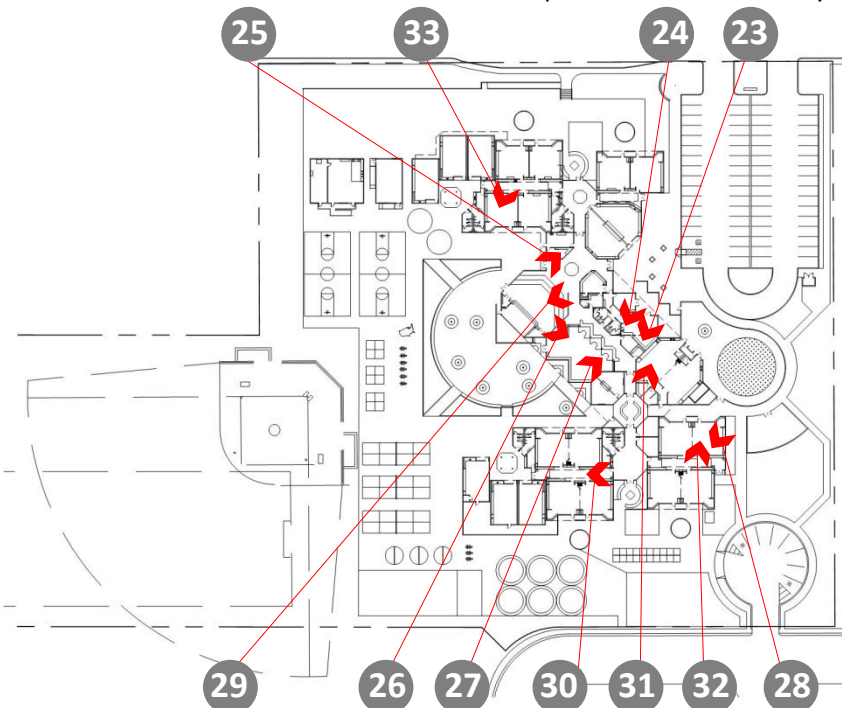
Display Area in Classroom



MPR Stage



Skylight in each Pod



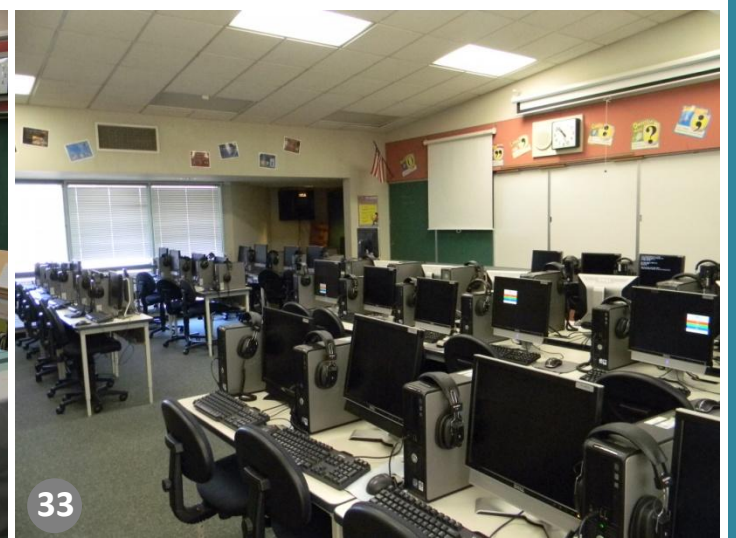
KEY MAP



Typical Kindergarten Classroom



Typical Classroom



Computer Lab





34

Typical Student Collaborative Area between Classrooms



35

Central Area between Classroom Pods



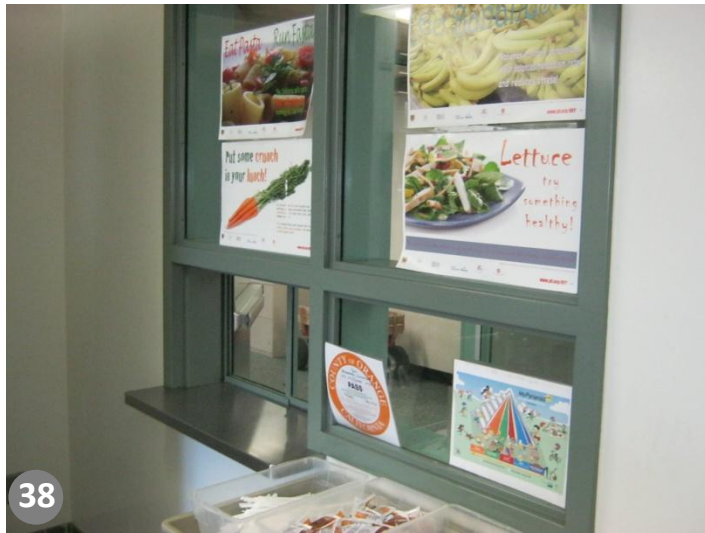
36

Typical Bathroom



37

Food Service



38

Window from Kitchen



39

Typical Portable (27)



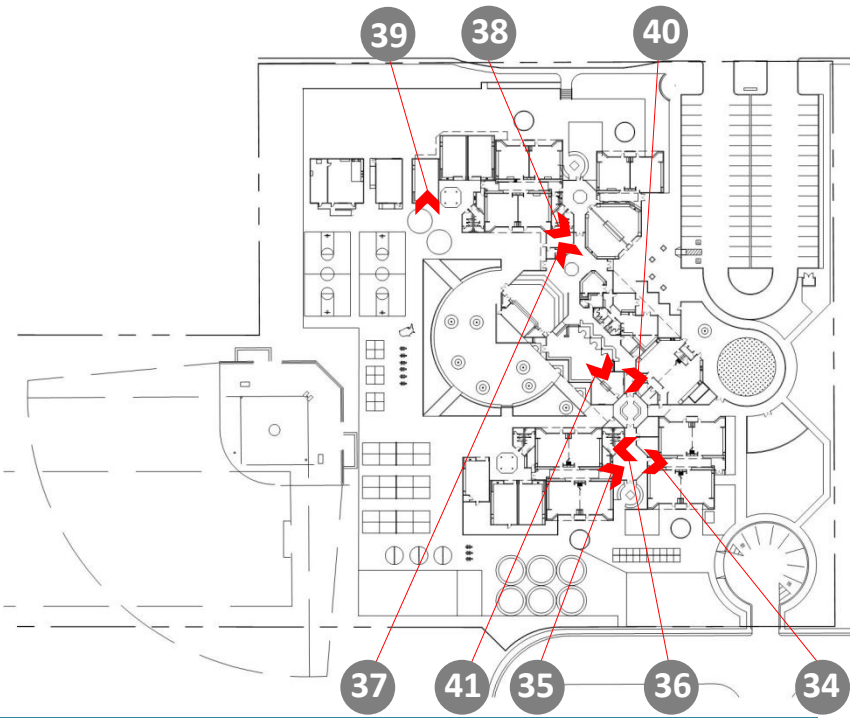
40

Kindergarten Shared Area



41

Speech Room



KEY MAP

