

## CAMPUS OBSERVATIONS

### Administration

- Conference rooms used regularly and meet current needs

### Classrooms

- Classrooms organized around central collaborative/ computer areas that feed into main hallway
- Access to classrooms need to go through Computer Lab or through exterior door
- Computer labs are in use throughout day
- Some classrooms have moveable partitions between them
- Some classrooms have small roll-up doors opening to hallway; potential for use of hallway for breakout activities
- 1 Music classroom; too small for school needs. Use stage to practice

- Science classrooms adequate but require more comfortable seating for students
- Special Education classrooms located on main floor; have dedicated bathroom but is outside and therefore requires additional supervision
- There is interest in having broadcast capabilities like other Middle Schools

### Library/ Media

- Centrally located, on main level
- Large space with small nook for reading, computer area, stacks, and study tables
- Adjacency to MPR through glass partition causes acoustical issues
- Conference rooms and counseling office, located in perimeter spaces, may also find it noisy
- Media Center includes adjacent computer lab

### Food Service

- Is adequately-sized, queue has two (2) entries/exits; building overhang near food service window
- No lunch shelter, just tree cover; seems difficult to accommodate lunch on rainy days
- Delivery/Food service could become issue if enrollment increases

### Multi-Purpose Room

- Ability to open glass partitions to Library to expand space; same partitions are not sound-proof enough to create acoustical separation between the two spaces
- Stage is used as classroom; moveable partition can separate stage from rest of MPR

## CAMPUS OVERVIEW

South Lake Middle School is a 7-8 seasonal school and is situated directly next to Meadow Park and down the road from South Lake, in a quiet residential setting with access to the I-405.

Classrooms are organized in a pod configuration around a central breakout/collaboration area that feeds directly into a central hallway with access to both the upper and lower levels of the building. The Multipurpose Room (MPR) and Library reside on the main/top floor of the school, nearest the parking lot.

With specialized science classrooms, designated collaborative computer areas and flexible classrooms, South Lake possesses the capabilities to educate students in a variety of ways, further enhancing their education. The school is also known for its award-winning physical education program, which includes lunchtime sports and after-school programs.

South Lake Middle School has been designated a California Distinguished School. A motto prominent on the South Lake campus is, "Take care of yourself. Take care of your school. Take care of each other." It is South Lake's belief that every middle school child has the capacity to "be compassionate and giving; to be perceptive, creative and informed; to be industrious, ethical and a risk taker; to persevere and to celebrate each day with optimism."

Mission Statement: "To motivate students to excel and provide the guidance for all to develop critical thinking skills and higher level learning strategies."



# South Lake Middle School



655 West Yale Loop | Irvine, CA 92614  
Site Analysis

LPA

### General Condition

- A large number of skylights throughout the building provide a lot of natural light but lack views to outside
- Windows in classrooms do not have blinds to control lighting

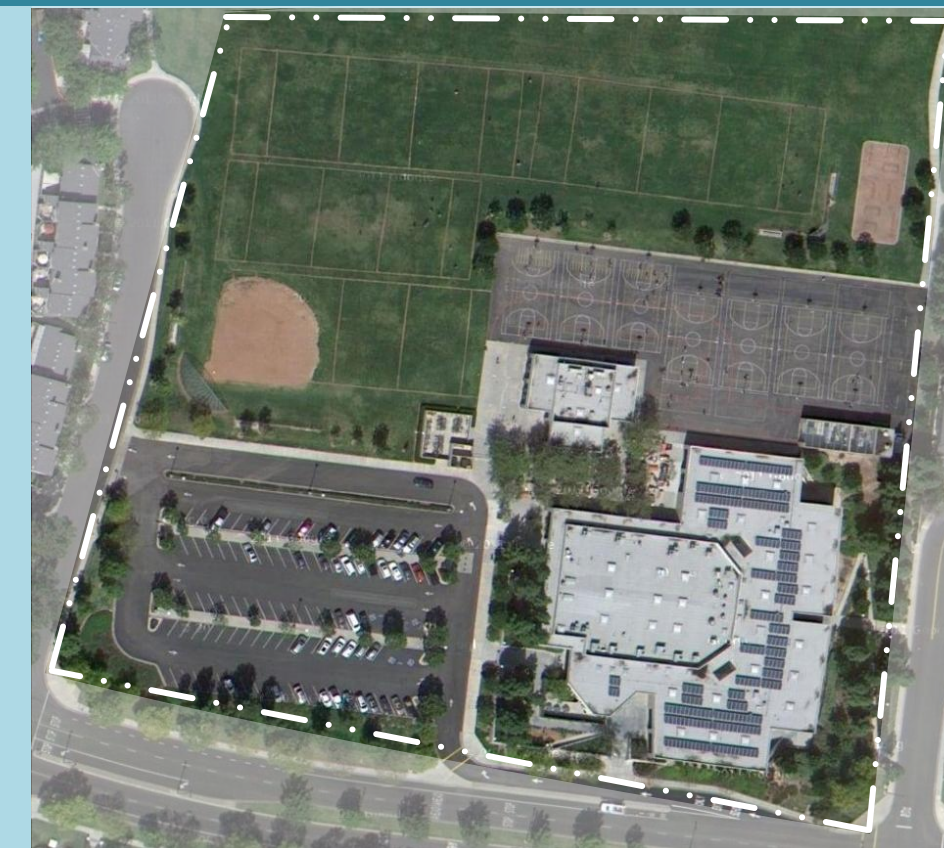
### Building Systems

- HVAC is provided by water source heat pumps with front office and multipurpose rooms served by stand alone gas/electric units
- Cooling tower is new 2011
- Controls are obsolete Honeywell and

- should be replaced
- School has photovoltaic panels

### Vehicular Access/ Parking/ Drop-Off

- Entry to parking lot requires that traffic going east on W Yale Loop make U-turn; alternate entrance/exit on Misty Run
- Some spots designated visitor parking, but signage is small and ambiguous





**SCHOOL STATISTICS**

Grades:	7-8
Building SF:	62,624
Portable SF:	0
2010/11 Enrollment:	594
Existing Capacity	806
Year Built:	1994
Modernization:	(2019)
Site Acreage:	12.2
# Portables:	0

**CLASSROOM COUNT**

Regular Classroom	13
Science	5
Music (1 + 1 Stage)	2
Art	1
Elective	1
Special Education	5
Computer Lab	1
Physical Education	1
<b>TOTAL</b>	<b>29</b>

**MEASURES OF QUALITY -**

MEASURES OF QUALITY -	+
Wayfinding/ Entry/ Welcome	○ ○ ● ○
Natural Daylighting	○ ○ ● ○
Controllability (Daylight, Lighting, HVAC)	○ ● ○ ○
Flexibility in Classrooms	○ ○ ● ○
Access to Technology	○ ○ ● ○
Collaboration	○ ○ ● ○
Student Display	○ ○ ● ○
MPR	○ ● ○ ○
Library/ Media	○ ○ ● ○
Functional Landscaping	○ ● ○ ○
Energy Consumption	○ ● ○ ○
General Condition	○ ○ ● ○



Front Entry



Main Entrance



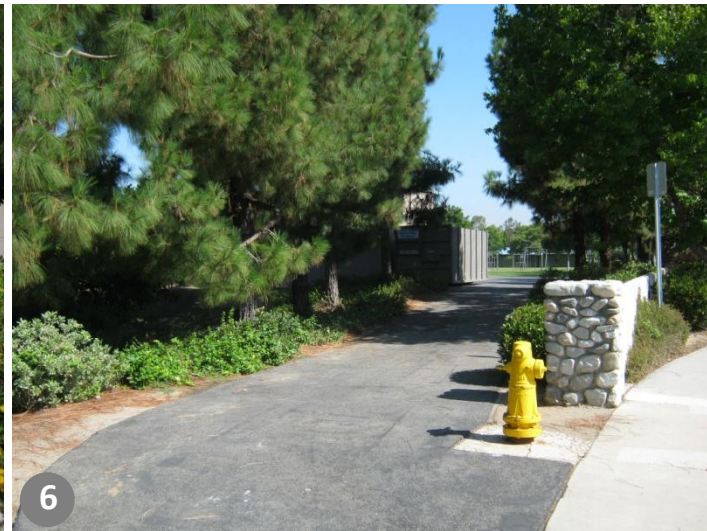
Drop-Off Entry



Parking Lot



Secondary Entry at back of school



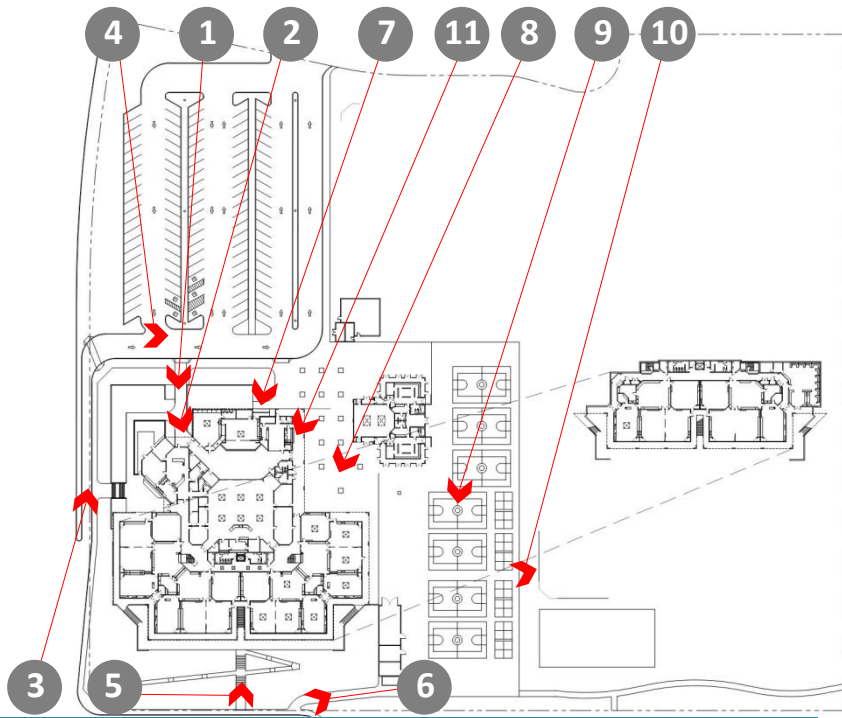
Pathway from adjacent neighborhood



Ramp to MPR backstage area



Shaded lunch area; no lunch shelter



KEY MAP



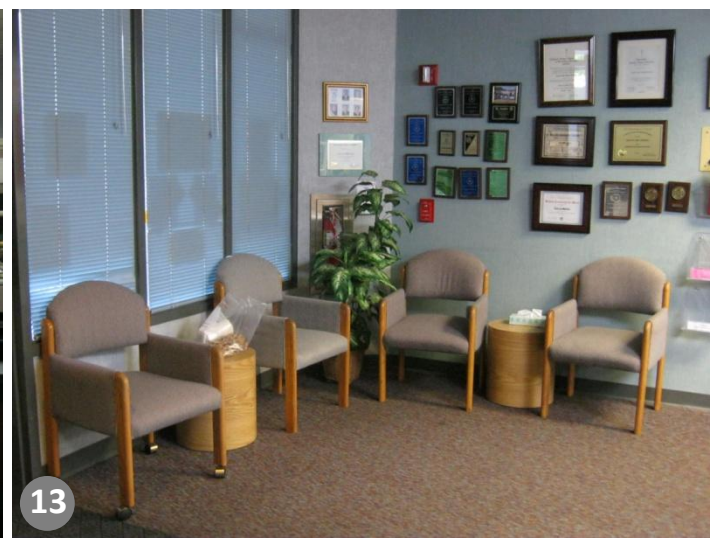
Basketball courts



Play fields



Exterior Food Service windows



12 Main office

13 Office waiting area

14 Principal's office

15 Assistant Principal's office

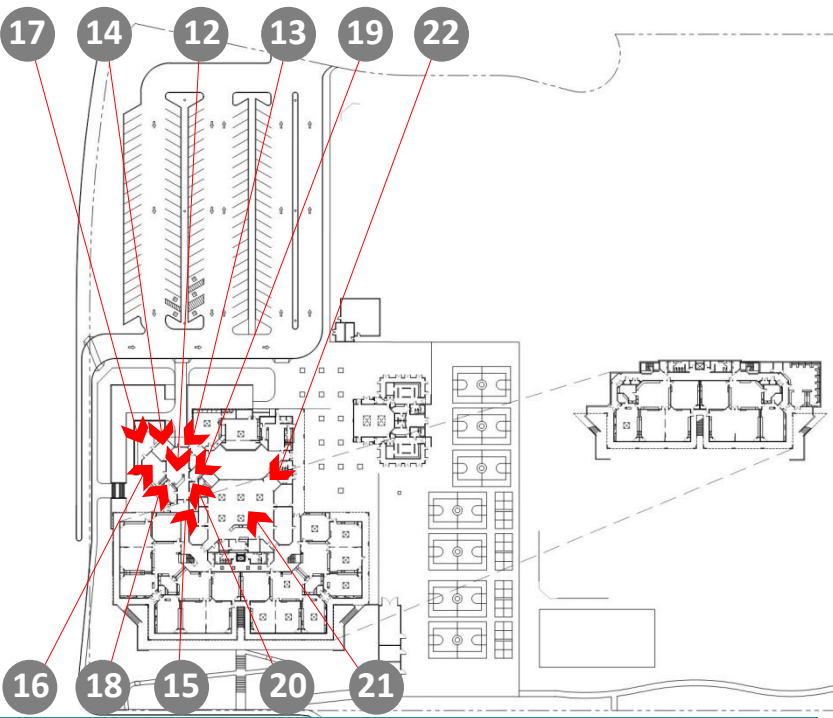


16 Staff lounge

17 Staff patio

18 Staff workroom

19 Health office



20 Small conference room (Spinnaker Room)

21 Library

22 Study nook inside Library

KEY MAP



Media Specialist room



Conference room adjacent to Library



Additional conference room adjacent to Library



Computer lab adjacent to Library



MPR stage



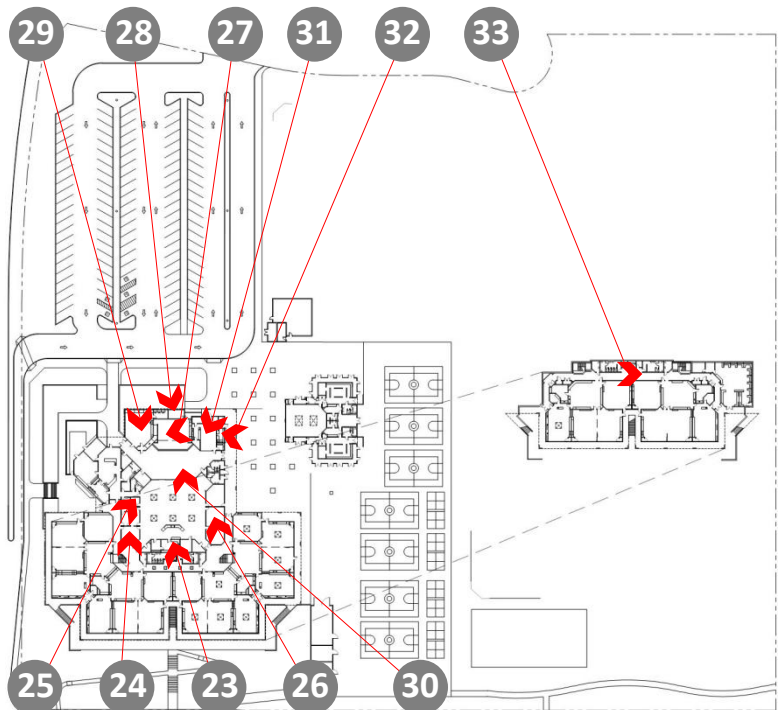
Instrument storage room



Music classroom



Sliding glass partition between MPR and Library



KEY MAP



Food Service



Interior view of Food Service windows



Ground floor, main hallway of classroom wing



34

Staircase to ground level classroom wing



35

Typical classroom



36

Typical science classroom



37

Collaborative computer area



38

Applied Science classroom



39

Shared office located between classrooms (4 total)



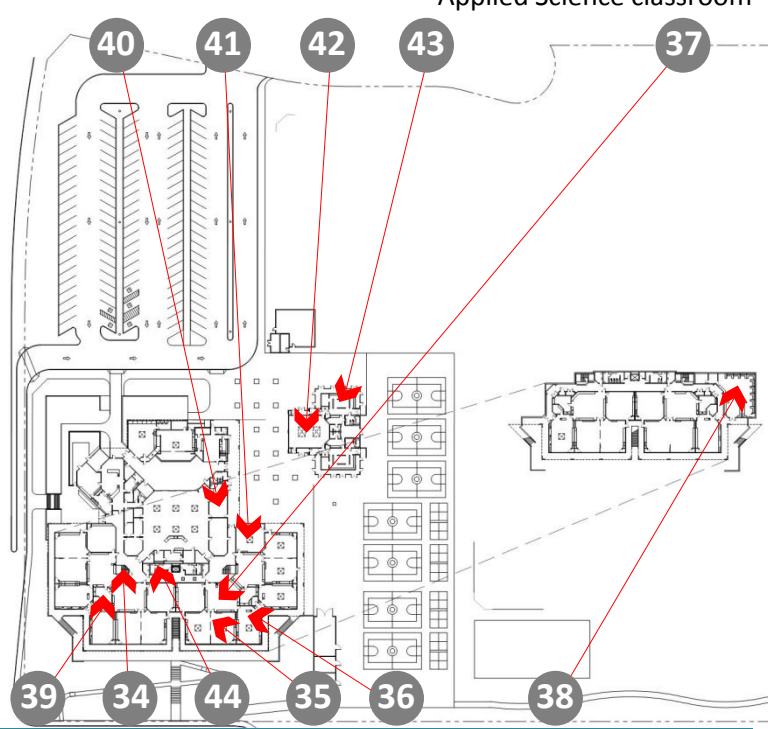
40

Miscellaneous classroom



41

Special Education classroom



KEY MAP



42

Fitness Center



43

Girl's locker room



44

Typical restroom