

CAMPUS OBSERVATIONS

Classrooms

- Classrooms generally have some daylighting and high ceilings (classrooms that were originally resource rooms in center of each building do not have as much natural light)
- Limited flexibility due to room size and current enrollment
- Science labs cannot support current enrollment needs; needs may change when new middle school opens
- Two dedicated music classrooms in MPR building, and one dedicated portable; all too small to accommodate the large performing arts groups
- Current Art room too small; classes spill outside, creating supervision concerns
- Special Education classrooms are grouped in one building rather than integrated

Library/Media & Computer Labs

- Central location; adjacent to Admin
- Inviting space with nice daylighting; supports current needs of school
- Math lab classes use computer lab 3 times per week

Food Service

- Adequately-sized; functions well for its purpose, with the exception of rainy days
- Queue has two (2) entry/exits to outside, and additional doors leading into MPR; students queue outside, with no shade
- Need for shelter/enclosed lunch area for inclement weather days
- No lunch shelter; trees provide some shade over lunch tables

Multi-Purpose Room

- Cannot open up into outdoor area or expand room when needed
- Stage cannot be used as acoustically-separate classroom

- MPR small; can only accommodate 1/3 the school population at any one time

Admin & Support Spaces

- Main office inadequate in size; congested in the morning with parents and students
- Other offices too small for meetings; insufficient number of conference rooms for daily meetings
- Teachers do prep work in classrooms; there is no other alternative
- Desire for larger front office and administrative offices, teacher workroom, and additional conference space
- Lounge comfortably fits 15 (50+ staff)
- Full staff can only meet in MPR or library

Physical Education

- There are no facilities to accommodate classes during inclement weather
- Locker rooms are too small; inadequate for number of students using them during each class period

CAMPUS OVERVIEW

Sierra Vista Middle School is a 7-8 seasonal school that is situated in a quiet residential setting near Silkwood Park and directly adjacent to the now closed site, Westwood Basics Plus Elementary School. The neighborhood in which the school resides has direct access to Culver Drive and Irvine Boulevard, not far from the I-5.

Classrooms are generally arranged in groupings of five, with each pod a separate building. The classroom buildings create a somewhat radial pattern surrounding the inner portion of the campus. The buildings on the interior of the campus outline a central courtyard with tables for gathering and student lockers. Administration and the Media Center are located in one of these interior buildings, and the Multipurpose Room (MPR) is located in a building at the front of the school, nearest the parking lot. There are also five portables currently in use.

Sierra Vista Middle School is a California Distinguished School, where science, math, music and art are important components of the curriculum. The school's code of conduct states that, "Each student has the right to an atmosphere in which optimum learning can take place." Accordingly, students are expected to treat others with respect, arrive on time, bring all of the necessary materials, and stay on task.

Mission Statement: Sierra Vista Middle School is committed to academic, personal and social growth for students. The school strives to provide a rich learning environment for academic achievement, to provide counseling and advisement programs for student support, and to provide extracurricular activities and classes to meet students' social and learning needs.



Sierra Vista Middle School

2 Liberty | Irvine, CA 92620
Site Analysis



General Condition

- School grounds and facilities are well-maintained and visually pleasing
- Inadequate amount of specialized spaces to support music, theater, physical ed.
- Classroom furniture is old and needs replacement
- Issues with inadequately sized spaces may be ameliorated when new middle school opens

Building Systems

- Original multizone units were replaced with carrier gas/electric roof top units in 2005 modernization; all equipment at the site is controlled by a Carrier EMS
- Site does not have photovoltaic panels
- HVAC controls are described as inadequate due to sharing of controls between different spaces

Technology

- Wireless infrastructure in place for all buildings; three computer labs that can be signed out by teachers, as well as one technology lab classroom
- Media Center has adequate technology and equipment to support program
- The only current technology concerns are memory/speed issues

Outdoor Areas

- Trees and shade in various areas of the site; could use more in lunch area
- Outdoor areas are used for learning, particularly due to lack of space in classrooms (especially art classes)
- Could use some more shade and table areas to support outdoor learning
- Playfields are used often and function well for school's needs

Collaborative Spaces

- Limited spaces for large-group (larger than one class) educational gatherings

Vehicular Access/ Parking/ Drop-Off

- Parking is adequate while adjacent site remains closed; was extremely congested when Westwood Basics Plus was open
- Drop-off is still somewhat congested due to location of school on cul-de-sac; creates potential safety issues

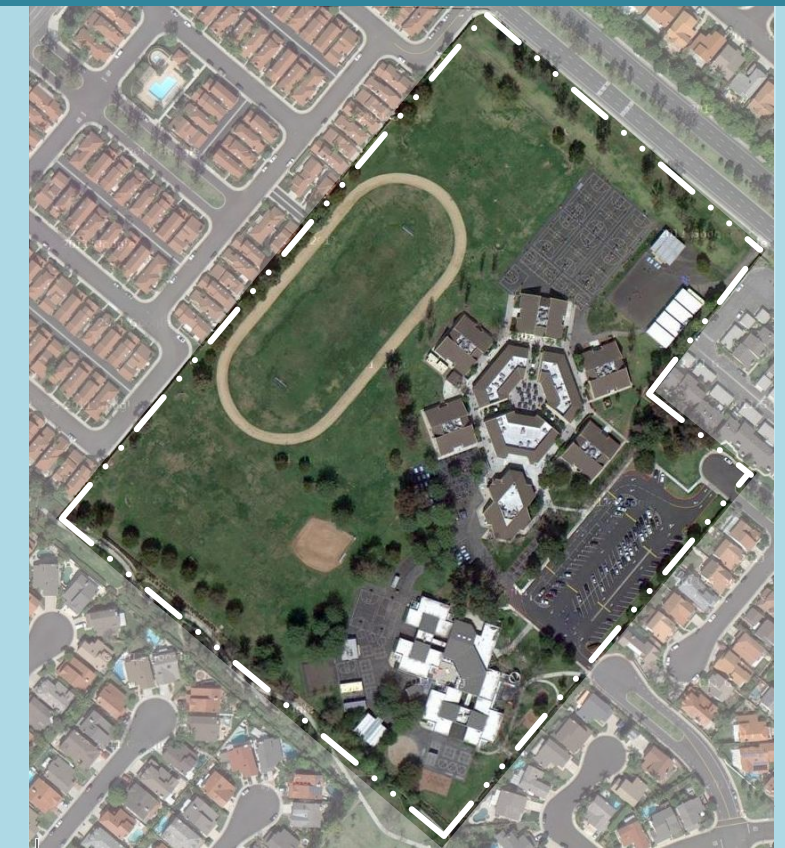
Display of Student Work

- Interesting displays of artwork on ceiling tiles in Admin and other areas

Wayfinding

- Admin not difficult to locate, but not the most obvious location in relation to parking lot
- Signage and organization of buildings by letter helpful in wayfinding

LPA



LEGEND

- Main Entry
- Secondary Entry
- Circulation
- Drop-Off
- Playfields/ Landscape
- Hardcourts
- Parking
- Trees

UTILIZATION LEGEND

- Classroom
- Science/ Art Lab
- Specialty Classroom
- Special Ed Classroom
- Physical Education
- Portable (Color based on Program)
- Other Space
- CR Regular Classroom
- S Science
- A Art
- M Music
- E Elective
- PE Physical Education
- LR Locker Room
- SE Special Education
- Comp. Computer Lab
- Open Unused Classroom

SCHOOL STATISTICS

Grades:	7-8
Building SF:	53,945
Portable SF:	3,840
2010/11 Enrollment:	1,072
Year Built:	1978
Modernization:	2009
Site Acreage:	11.9
# Portables:	5

CLASSROOM COUNT

General (4 Portables)	22
Science	8
Art	1
Music (1 Portable)	3
Special Education	3
Computer Labs	4
TOTAL	41

MEASURES OF QUALITY -

MEASURES OF QUALITY -	+
Wayfinding/ Entry/ Welcome	○ ● ○ ○
Natural Daylighting	○ ○ ● ○
Controllability (Daylight, Lighting, HVAC)	○ ● ○ ○
Flexibility in Classrooms	○ ● ○ ○
Access to Technology	○ ○ ● ○
Collaboration	● ○ ○ ○
Student Display	○ ● ○ ○
MPR	○ ● ○ ○
Library/ Media	○ ○ ● ○
Functional Landscaping	○ ○ ● ○
Energy Consumption	○ ○ ○ ●
General Condition	○ ○ ● ○





Outdoor Waiting Area near Parking Lot



Main Entrance to Admin



Drop-Off



Parking Lot



Service Entry/Access



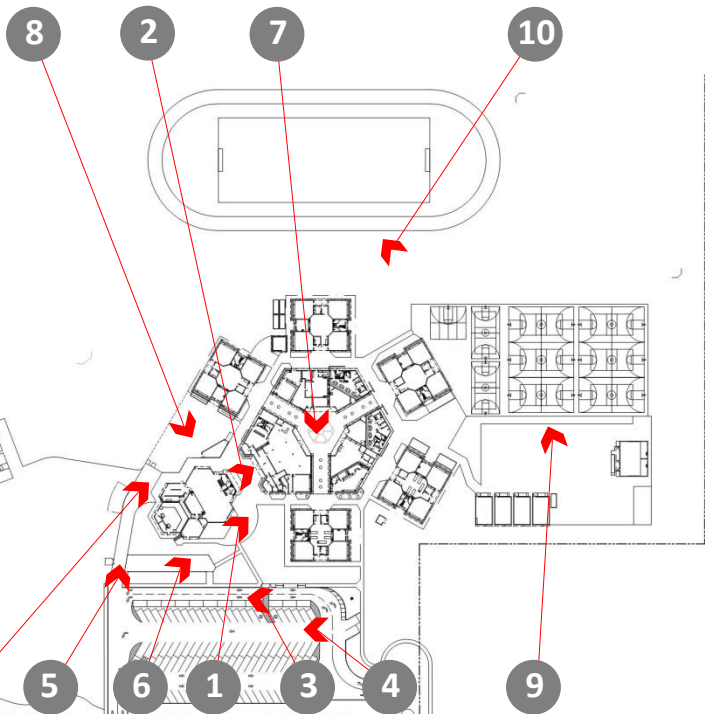
Bike Racks



Interior Courtyard



Shaded Lunch Area



KEY MAP



Basketball Courts



Track and Playfields



Lunch Queuing Area



12

Lockers



13

Portables J1, J2, J3, J4



14

Music Portable



15

Main Office



16

Main Waiting Area



17

Ceiling Tiles in Main Office



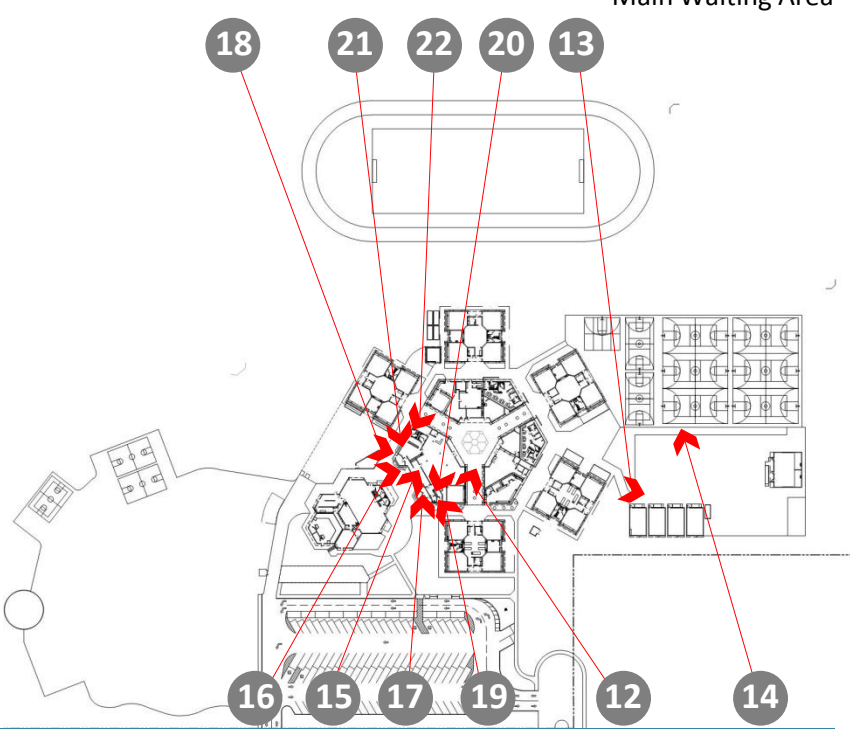
18

Principal's Office



19

Assistant Principal's Office



KEY MAP



20

Health Office



21

Staff Lounge



22

Staff Workroom



23

Conference Room 'H'



24

Library



25

Library Conference Room



26

Library Computer Lab



27

Computer Lab adjacent to Library



28

MPR Stage



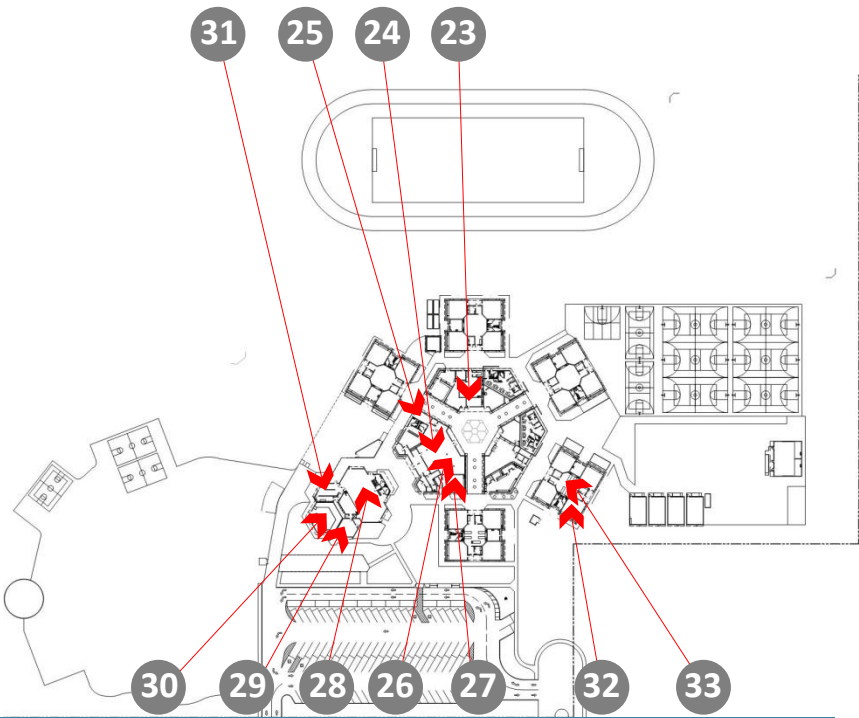
29

Music Classroom (F1)



30

Music Classroom (F2)



KEY MAP



31

Food Service



32

Typical Classroom



33

Typical Science Classroom



34

Special Education Classroom



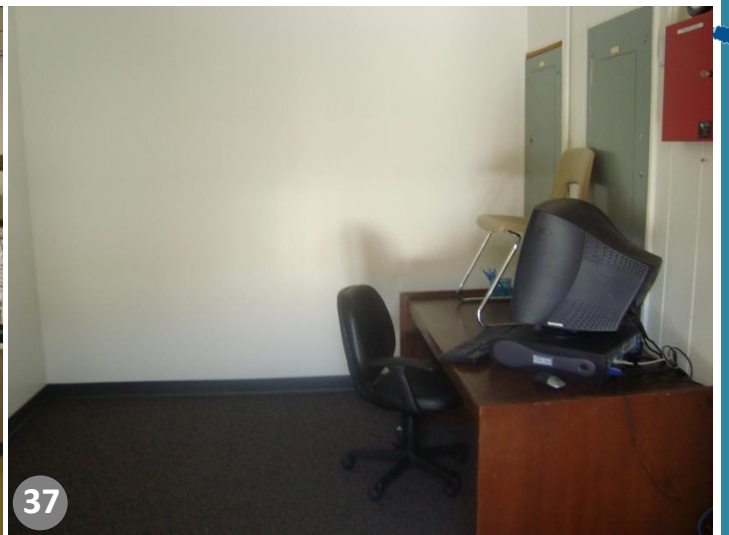
35

Ceramics Classroom



36

Art Classroom



37

Typical Teacher Office



38

Music Portable



39

Portable (J2)



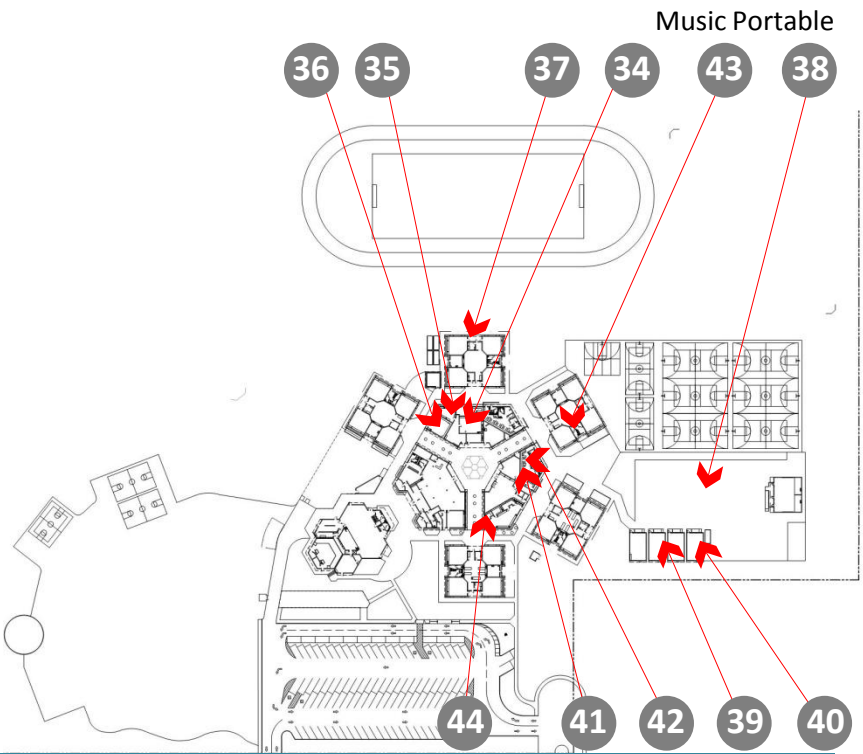
40

Portable (J4)



41

Boy's Locker Room



KEY MAP



42

Boy's Locker Room Shower



43

Typical Girl's Restroom



44

Storage in Science Classroom