

## CAMPUS OBSERVATIONS

### Classrooms

- Two Kinder classrooms with restrooms
- Classrooms in main building have some small to mid-sized windows; could use more daylight
- Classrooms do not have doors; may result in acoustical issues within pod
- Each classroom grouping has central, small resource/workroom spaces
- Teacher station fixed to one location; described by users as limiting flexibility
- One (1) dedicated Science classroom with sink; adequately supports current needs
- Music classroom in main building is small and has poor temperature control; can get very hot with direct sunlight
- Other music classroom housed in portable; overall, site lacks dedicated music areas with adequate storage space

### Library/ Media

- Centrally located; access from all academic wings
- Space is small/cramped; difficult to conduct lessons
- Desire for dedicated technology lab to provide ability to expand library collection and student work areas

### Food Service

- Serving area is very small; not adequate and not wheelchair accessible
- Queue has one (1) entry/ exit
- Lunch shelters provide shade but not rain protection; they are located at the front of the campus, rather than adjacent to hardcourts and playfields

### Multi-Purpose Room

- Very small; cannot support more than one grade level for assemblies and small stage limits number of performers
- Sometimes perform on MPR floor with parents on stage; limits invitations to events
- Cannot open/expand MPR into other indoor or outdoor spaces
- Stage cannot be used as classroom
- MPR needs to be used for music classes, in addition to music portable and small music room adjacent to MPR

### Admin, Support Spaces, Storage

- General lack of storage space; unused classrooms sometimes used for storage
- Teachers and staff have workroom areas that are described as adequately supporting prep work

## CAMPUS OVERVIEW

Santiago Hills Elementary School is a K-6, seasonal school. The school is situated in a quiet residential setting adjacent to a small park with pool and tennis courts; the neighborhood in which the school resides is not far from the Northwood Town Center Shopping Center.

Each academic wing is organized in a pod configuration with four classrooms surrounding a central workroom space. The three main wings feed directly into the centrally-located Library. The Library is a welcoming space that receives a good amount of daylighting from two interior courtyards, high ceilings, and clerestory windows, but it is a fairly small space.

The Administrative area and the Multipurpose Room (MPR) are located toward the front of the campus, with a main hallway connecting them to the centrally-located Library. Both areas are somewhat small, and the MPR cannot comfortably accommodate large groups and events. Finally, unlike most of the other elementary schools, the lunch shelters are located at the very front of the school, facing an outdoor stage area.

Santiago Hills is a California Distinguished School, housing the Alternative Program for Academically Accelerated Students (APAAS) for grades 4 through 6, as well as three Special Day Class programs serving K-6<sup>th</sup> grade students. Students are taught by highly experienced and well-prepared professionals dedicated to creating a supportive, collaborative, and safe environment for teaching and learning.



# Santiago Hills Elementary School



29 Christamon West | Irvine, CA 92620  
Site Analysis

### General Condition & Aesthetic

- Overall, well-maintained and visually pleasing grounds, particularly in front; portables and storage containers perceived as less aesthetically pleasing
- HVAC issues with some rooms too hot or cold; teachers cannot adjust temperature
- Some rooms lost skylights during modernization; dark corners
- Slight sloping surface near service entry

### Building Systems

- Building modernized in 2005 including replacement of water source heat pumps
- All equipment controlled by Carrier EMS
- Site has photovoltaic panels

### Technology

- Technology is fairly adequate, but some equipment still outdated
- Classes attend computer lab weekly; upper grades (4-6) have classroom

- desktops for students and 4-6 laptops; K-3 have a few desktops per classroom
- Classrooms have projectors and document cameras
- Desire to increase amount of technology available and update/replace where necessary; need for more storage and better MDF location

### Outdoor Spaces

- Interior courtyards are nice, green spaces
- Almost all classrooms have direct outdoor access; lack of tables/areas to support outdoor learning
- Fields need continual maintenance to support school's needs
- Desire for lockable fencing around bike rack to avoid vandalism

### Meeting Areas

- No spaces (indoor or outdoor) that can accommodate large group assemblies

- No spaces for student small group work

### Vehicular Access/ Parking/ Drop-Off

- Originally designed with idea that children would walk to school; no longer the case
- Very small lot; parking is a major concern
- Very limited parent and visitor parking
- Drop off area is hazardous with addition of buses and gets very congested

### Child Care

- Located in portables toward the front of the campus

LPA

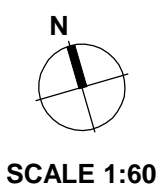


**LEGEND**

- Main Entry
- Secondary Entry
- Drop-Off
- Main Circulation
- Playfields/ Landscape
- Hardcourts
- Play Apparatus
- Parking
- Courtyard
- Trees

**UTILIZATION LEGEND**

- Kindergarten Classroom
- Classroom
- Science/ Art Lab
- Specialty Classroom
- Special Ed Classroom
- Portable (Color based on Program)
- Child Care (Portable)
- Other Space
- Kindergarten
- #"/> Grade Level
- Science
- Music
- Special Ed/Resource
- Special Education
- Specialized Academic Instruction
- Occupational Therapy/ Physical Therapy
- Administration
- Unused Classroom



**SCHOOL STATISTICS**

Grades:	K-6
Building SF:	28,194
Portable SF:	9,600
2010/11 Enrollment:	531
Year Built:	1979
Modernization:	2008
Site Acreage:	7.71
# Portables:	8 + 2 CC

**CLASSROOM COUNT**

Kindergarten	2
1 <sup>st</sup> & 2 <sup>nd</sup> Grade	4
3 <sup>rd</sup> & 4 <sup>th</sup> Grade	6
5 <sup>th</sup> & 6 <sup>th</sup> Grade (2 + 4 Portables)	6
Science (1 Portable)	1
Music* (1 + 1 Portable)	2
Not Used	1
RSP/SAI/SDC** (3 + 2 Portables)	5
Computer Lab	1
<b>TOTAL</b>	<b>28</b>

\*Music classes also take place in MPR; not included in classroom count  
 \*\*Additional Special Ed pullout programs in various shared spaces

**MEASURES OF QUALITY - +**

Wayfinding/ Entry/ Welcome	<input type="radio"/> <input checked="" type="radio"/> <input type="radio"/> <input type="radio"/>
Natural Daylighting	<input type="radio"/> <input checked="" type="radio"/> <input type="radio"/> <input type="radio"/>
Controllability (Daylight, Lighting, HVAC)	<input type="radio"/> <input checked="" type="radio"/> <input type="radio"/> <input type="radio"/>
Flexibility in Classrooms	<input type="radio"/> <input checked="" type="radio"/> <input type="radio"/> <input type="radio"/>
Access to Technology	<input type="radio"/> <input type="radio"/> <input checked="" type="radio"/> <input type="radio"/>
Collaboration	<input checked="" type="radio"/> <input type="radio"/> <input type="radio"/> <input type="radio"/>
Student Display	<input type="radio"/> <input type="radio"/> <input checked="" type="radio"/> <input type="radio"/>
MPR	<input checked="" type="radio"/> <input type="radio"/> <input type="radio"/> <input type="radio"/>
Library/ Media	<input type="radio"/> <input checked="" type="radio"/> <input type="radio"/> <input type="radio"/>
Functional Landscaping	<input type="radio"/> <input checked="" type="radio"/> <input type="radio"/> <input type="radio"/>
Energy Consumption	<input type="radio"/> <input type="radio"/> <input checked="" type="radio"/> <input type="radio"/>
General Condition	<input type="radio"/> <input type="radio"/> <input checked="" type="radio"/> <input type="radio"/>



Front of School



Front Ramp and Steps from Parking Lot



Entrance to Main Office



Parking and Drop-off



Service Entry/Access



Portables P9/P10 - P11



Kindergarten Play Apparatus



Courtyard 2



KEY MAP



Basketball Courts and Playfields



Tables and Swings near Playfields



Play Apparatus





Front Signage



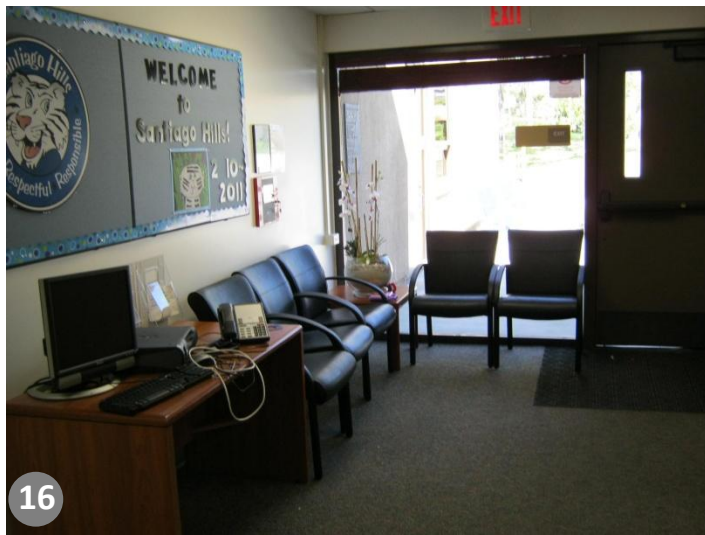
Lunch Shelter



Childcare Portable



Main Office



Main Office Waiting Area



Staff Workroom



Staff Lounge



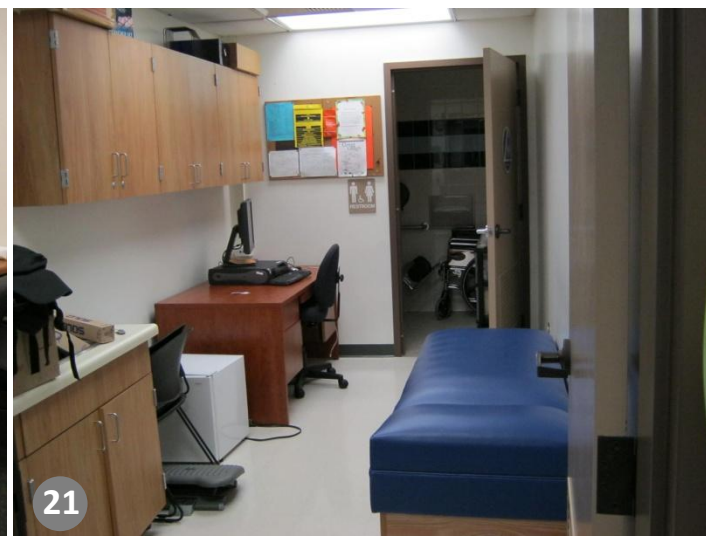
Conference Room



KEY MAP



Principal's Office



Health Office



Psychologist's Office





23 Typical Central Workroom in Pod



24 Music Room



25 Instrument Storage in MPR



26 Typical Classroom



27 Library/Media Center



28 Computer Lab in Library



29 MPR



30 Typical Kindergarten Classroom



KEY MAP



31 Typical Pod Hallway



32 Food Service



33 Childcare Portable

