

## CAMPUS OBSERVATIONS

### Classrooms

- Lack of adequate Kinder Classrooms (only 2); using old music/art room as 3<sup>rd</sup> K room
- One small computer lab for each grouping of 3-4 general classrooms
- Larger class sizes have impacted flexibility and functionality of classrooms; particularly in primary grades
- Teachers report being isolated in self-contained classrooms: “collaborative work with peers is difficult”; monitoring/supervision issues
- Lack dedicated, permanent Music rooms; 1 in portable and also use MPR
- Difficulty accommodating RTI needs
- Dedicated science rooms lack equipment
- No dedicated Art Lab
- Some classrooms are too far from teacher restrooms

### Food Service

- Adequately-sized but could be larger to accommodate current enrollment;
- Functions fairly well; queue has two (2) entries/ exits

### Library/ Media

- Located down the hall from Admin
- Media/Library area is inadequately sized for a school with so many students (950+)
- Need more shelving for books
- Speech and Psych in adjacent office spaces; may find it noisy
- Computer lab in Library area and adjacent media space; lab and library adjacency causes acoustical issues

### Multi-Purpose Room

- Does not open up into central courtyard; MPR windows face lunch shelter area
- Stage cannot be used as classroom

- MPR is used for music each morning; then used for assemblies in afternoon. It is difficult to reorganize the space for these functions within in the daily schedule
- Interior stage can open to outdoor stage and outdoor learning area
- Space cannot accommodate entire student body; nor can it accommodate full orchestra or band during concerts
- Outdoor seating area has some seat walls but no shade

### Administrative Area

- Staff workroom is small and inconvenient for teachers to access due to central location; often occupied by parent volunteers
- Conference room too small
- Need for more restrooms in appropriate locations for staff

## CAMPUS OVERVIEW

Plaza Vista School is a K-8 single-track, year-round school. The school is situated directly adjacent to Plaza Park off of Warner Ave (between Harvard Ave and Culver Drive).

With the exception of the Kindergarten area, which is located off of Administration, classrooms are organized in groupings of three or four rooms adjacent to one central breakout/collaboration area; the collaborative space connects to the main interior hallway that runs the length of the school building.

The Administrative area is located toward the front of the campus, with an interior hallway connecting it to the Library and Media Center. The Multipurpose Room (MPR) is located beyond the Library and Media Center in a separate building near the hard courts. The MPR has a wall of inoperable windows that face the lunch shelter, and an indoor seating area and performance platform. In addition, the platform can connect to an outdoor space and adjacent outdoor learning area.

Plaza Vista’s curriculum is comprehensive and considers each individual. The school is committed to the love of learning and actively seeks to instill this desire in its students. The school’s primary goal is academic, social, and physical achievement for all students. As a K-8 school, Plaza Vista strives to provide a true Middle School experience that goes beyond the elementary experience and prepares 6-8 graders for the future, so they may “jump to success.”

Mission Statement: To create a safe, clean, and attractive school that fosters open lines of communication and support, and values honesty and respect for all. To provide an appreciative, friendly atmosphere for all of the community.



# Plaza Vista K-8 School



670 Paseo Westpark | Irvine, CA 92714  
Site Analysis

### Building Systems

- HVAC is provided by Carrier VAV gas/electric roof top units that are controlled by a Carrier EMS
- Site has photovoltaic panels

### Vehicular Access/ Parking/ Drop-Off

- Separate entry at front of school for Kinder
- Parking and student drop-off is cited as an ongoing safety issue
- Request for larger parking lot

### Outdoor Areas

- Fields are described as not being in good condition, and unable to accommodate number of students at school
- School has first organic garden in District, planted in honor of former student

### Supervision

- Restrooms are at end of long hallway, on exterior – difficult to supervise from inside

and from playground

- Outdoor learning is desirable; proper supervision would need to be addressed

### Re-purposed Rooms

- Teacher conference room used as counseling office; staff lounge as RTI
- Classroom used as MS cooking class

### Space Needs

- Need for more conference space
- Need for music storage; currently, MPR space used to store supplies, chairs, instruments, stands
- Need for staff workrooms by grade or primary/ upper elementary/ middle
- Need more space and additional media lab in Library/Media; does not effectively support student enrollment

### Technology

- Integration of technology is difficult due to limited lab space. Each grade level has dedicated computer lab; can only accommodate half the class; built in casework limits flexibility
- Desire to incorporate laptops and technology into classrooms, not just using tech in small adjacent labs

### Child Care

- Located at back of campus, in portables
- Separate drop-off area and secondary entrance

### Wayfinding

- Signage on roadside could be better defined
- Classroom numbering system consistent with grade level is helpful
- Library has soffits which help to subtly indicate different zones

LPA





### UTILIZATION LEGEND

- Kindergarten Classroom
  - Classroom
  - Science/ Art Lab
  - Specialty Classroom
  - Special Ed Classroom
  - △ Portable (Color based on Program)
  - CC Child Care (Portable)
  - Other Spaces
- K Kindergarten
  - # Grade Level
  - S Science
  - M Music
  - C Commons
  - RSP Special Ed/Resource
  - RtI Response to Intervention
  - Comp. Computer Lab
  - Admin. Administration
  - Open Unused Classroom

### LEGEND

- ↔★ Main Entry
- Secondary Entry
- Drop-Off
- Main Circulation
- Playfields/ Landscape
- Hardcourts
- Play Apparatus
- Parking
- Trees

### SCHOOL STATISTICS

Grades:	K-8, yr round
Building SF:	59,234
Portable SF:	3,840
2010/11 Enrollment:	951
Year Built:	1999
Modernization:	(2024)
Site Acreage:	10
# Portables:	1 + 3 CC

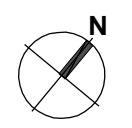
### CLASSROOM COUNT

Kindergarten	3
1 <sup>st</sup> & 2 <sup>nd</sup> Grade	8
3 <sup>rd</sup> & 4 <sup>th</sup> Grade	7
5 <sup>th</sup> & 6 <sup>th</sup> Grade	6
7 <sup>th</sup> & 8 <sup>th</sup> Grade	4
Science	3
Music* (1 Portable)	1
RSP+RTI	3
Computer Lab	2
<b>TOTAL</b>	<b>37</b>

\*MPR used for music classes, not included in count  
 \*2 science classes specifically 7<sup>th</sup>/8<sup>th</sup> grades

### MEASURES OF QUALITY -

Measure	+
Wayfinding/ Entry/ Welcome	○ ○ ● ○
Natural Daylighting	○ ○ ● ○
Controllability (Daylight, Lighting, HVAC)	○ ○ ● ○
Flexibility in Classrooms	○ ○ ● ○
Access to Technology	○ ○ ● ○
Collaboration	○ ● ○ ○
Student Display	○ ○ ● ○
MPR	○ ● ○ ○
Library/ Media	○ ● ○ ○
Functional Landscaping	○ ● ○ ○
Energy Consumption	○ ○ ● ○
General Condition	○ ○ ● ○



SCALE 1:100



Front of school



Main entrance



Parking and Drop-off



To childcare drop-off and service access



Walkway between MPR and main building



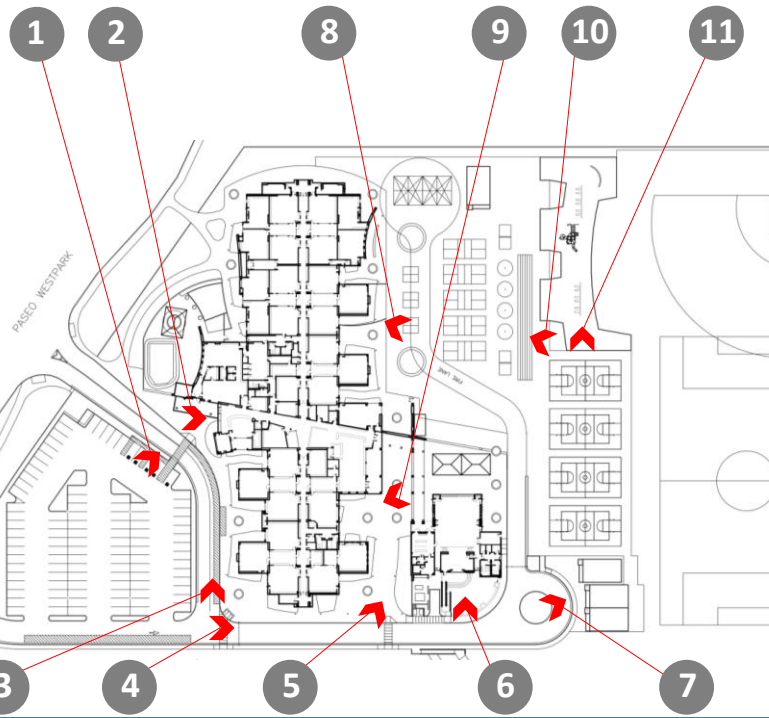
Outdoor stage



Childcare portables with shaded eating area



Instructional Garden



KEY MAP



Typical classroom courtyard



Hard courts



Play apparatus and seating near hard courts



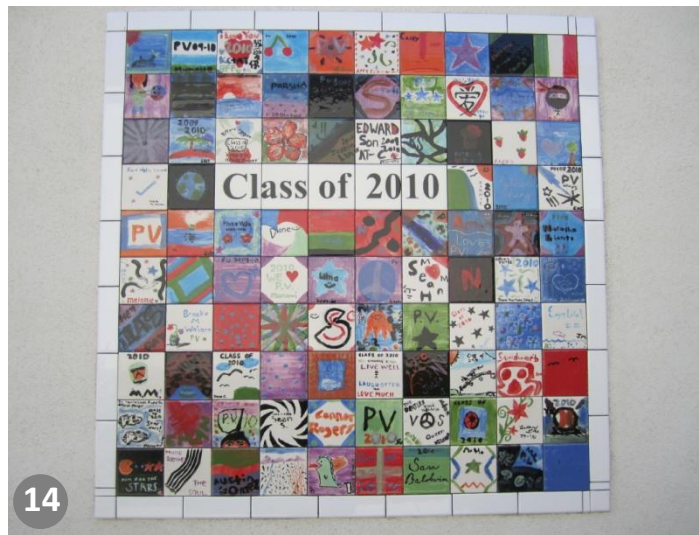
12

Lunch shelter



13

Service access



14

Student tile artwork



15

Music portable



16

Kindergarten play structure



17

Main office & entry



18

Principal's office



19

Counselor's office



KEY MAP



20

Health office



21

Staff workroom



22

Staff lounge



23

24

25

26

Library

Media Center

Speech room near Library/Media Center

RSP



27

28

29

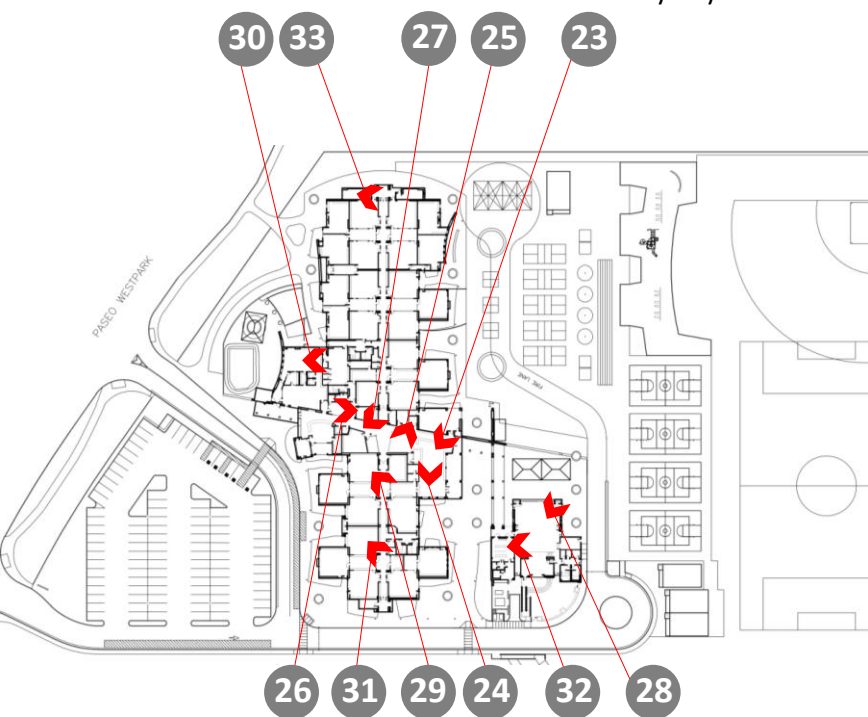
30

Artwork in hallway beyond Admin

MPR

Typical classroom

Typical Kinder classroom (K2)



31

32

33

7<sup>th</sup>/8<sup>th</sup> science classroom

Food service

Typical boys' bathroom

KEY MAP