

CAMPUS OBSERVATIONS

Classrooms

- 2 designated Kindergarten classrooms, collaboration space used as 3rd Kinder classroom, general classroom used as 4th
- General classrooms in main building connect to collaborative pod central to each wing; classrooms are perceived as spacious/ flexible after expansion project
- Transparency between classrooms and pod assist in supervision/monitoring pods
- Insufficient number of permanent classrooms in main building for current enrollment; 8 portables in use
- Moderate to Severe Autism program housed on site; need for more space to support this program. Classrooms are in portables; not integrated with rest of

school

- Only 1 dedicated Music classroom; stage used as 2nd classroom with moveable partition wall; dedicated space for three music groups would be beneficial for Music program

- Only 1 dedicated Science classroom
- No dedicated Art Lab

Collaborative Spaces

- There is limited space for small group instruction; need for quiet work space

Library/ Media

- Centrally located; access from all academic wings in main building
- Speech and workrooms located in perimeter office/ conference spaces; may find it noisy

Food Service

- Is adequately-sized and functions well for its purpose
- Queue has two (2) entry/ exits
- Overhang creates shade and rain cover for queuing outside

Multi-Purpose Room

- Ability to open up into central courtyard
- Stage can be used as acoustically-separate classroom by closing partition

CAMPUS OVERVIEW

Oak Creek Elementary School is a seasonal K-6 public school. The school is situated next to Dovecreek Park in a quiet residential setting, and the neighborhood in which the school resides has access to the 405.

With the exception of the Kindergarten classrooms, which are adjacent to Administration, each academic wing is organized in a pod configuration around a central breakout/collaboration area which feeds directly into the centrally-located Library.

The Administrative area and the Multipurpose Room (MPR) are located toward the front of the campus with interior walkways connecting to the Library. The MPR is equipped with a high-tech stage and also sliding glass doors, which enables the room to open to a central courtyard whenever there is a need or interest in connecting to the outdoors.

A belief inherent at Oak Creek is that providing an instructional program that instills a joy of learning can empower all children to reach their potential. The WISE Owl System implemented into the curriculum encourages: a **Winning** attitude, **Integrity**, **Showing respect** and **responsibility**, and **Encouraging others**.

Mission Statement: To enable all students to become contributing members of a society empowered with the skills, knowledge, and values necessary to meet the challenges of a changing world and to provide the highest quality educational experience we can envision.



Oak Creek Elementary School



1 Dovecreek | Irvine, CA 92618
Site Analysis

General Condition

- Building is in very good condition; aside from certain space needs due to increased enrollment

Building Systems

- HVAC is provided by Carrier gas/electric units serving multiple zones per unit with variable airflow
- Units are scheduled by a Barrington EMS which is scheduled to be updated to Andover Controls
- Site does not have photovoltaic panels

Technology

- Inability to provide fully adequate access to technology; pods cannot accommodate full class, and not enough pods to accommodate classrooms in portables

- Desire for student computers in classrooms for students
- Wireless access throughout entire campus is required as school pursues possibility of computers on wheels (COWs) to support technology needs with limited space

Non-Traditional Space Uses

- Storage room adjacent to MPR used for counseling/support services for Autistic students

Wayfinding

- Fairly simple layout
- No major physical distinctions or variations between different classroom wings for ease of navigating space

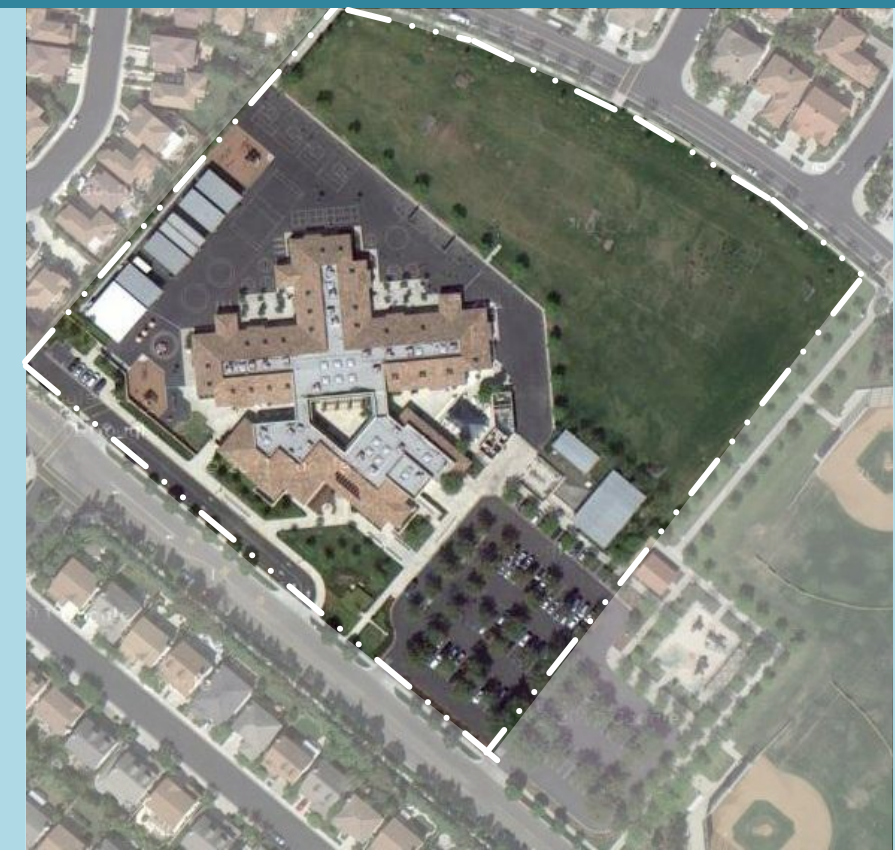
Vehicular Access/ Parking/ Drop-Off

- Drop-off and pick up is perceived to be chaotic/congested
- Two drop-off areas exist; one is convenient for Kinder drop-off

Child Care

- Located on the perimeter
- Near separate drop-off area

LPA





SCHOOL STATISTICS

| | |
|---------------------|----------|
| Grades: | K-6 |
| Building SF: | 51,000 |
| Portable SF: | 14,400 |
| 2010/11 Enrollment: | 853 |
| Year Built: | 2002 |
| Modernization: | (2027) |
| Site Acreage: | 10 |
| # Portables: | 8 + 3 CC |

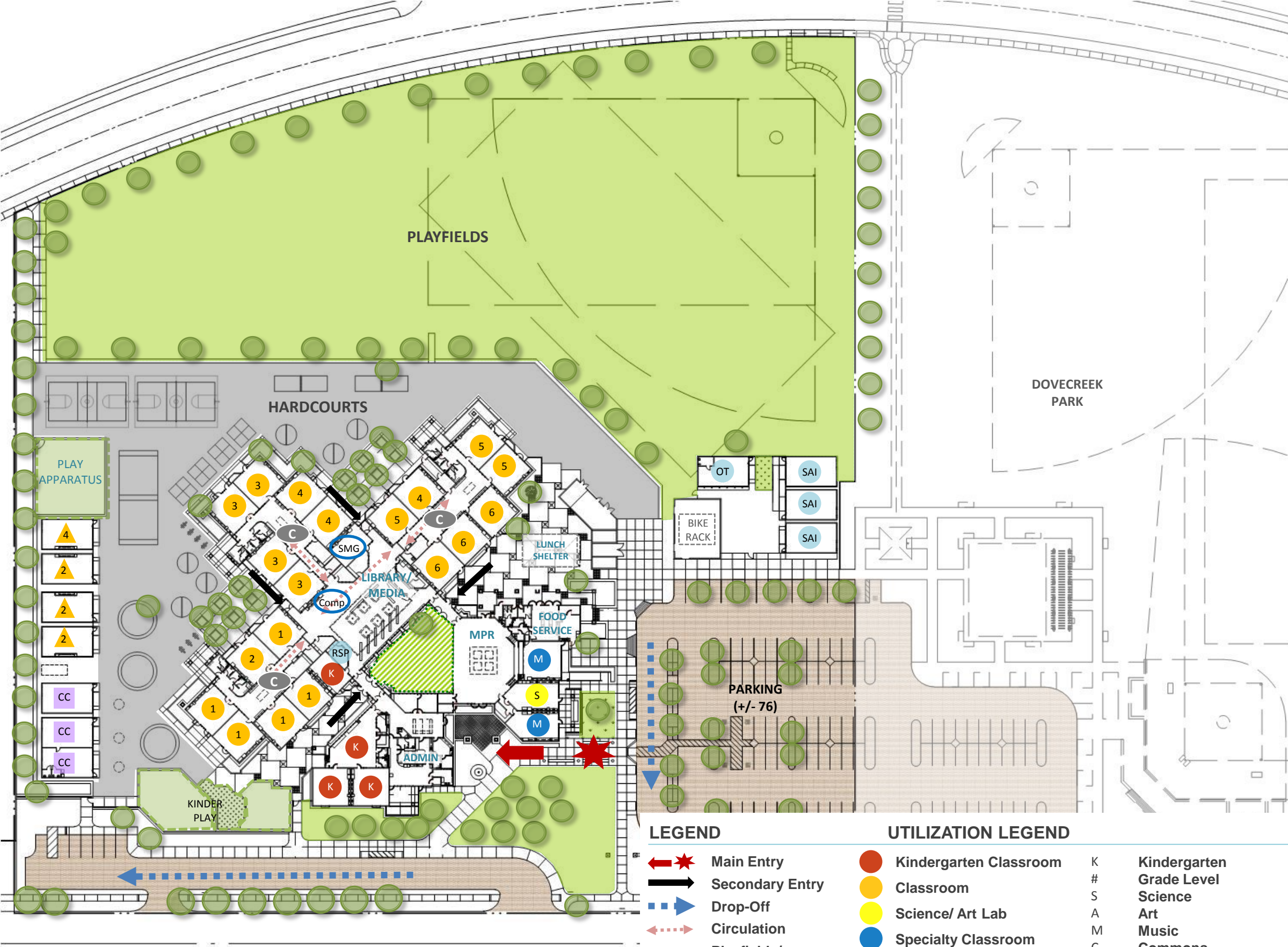
CLASSROOM COUNT

| | |
|---|-----------|
| Kindergarten* | 4 |
| 1 st & 2 nd Grade (6 + 3 Portables) | 9 |
| 3 rd & 4 th Grade (7 + 1 Portable) | 8 |
| 5 th & 6 th Grade | 6 |
| Science | 1 |
| Music (1 + 1 Stage) | 2 |
| SAI/OT/RSP (1 + 4 Portables) | 5 |
| Computer Lab | 1 |
| TOTAL | 36 |

*K Activity Center being used as classroom

MEASURES OF QUALITY - +

| | |
|--|---------|
| Wayfinding/ Entry/ Welcome | ○ ○ ● ○ |
| Natural Daylighting | ○ ○ ● ○ |
| Controllability (Daylight, Lighting, HVAC) | ○ ● ○ ○ |
| Flexibility in Classrooms | ○ ○ ● ○ |
| Access to Technology | ○ ● ○ ○ |
| Collaboration | ○ ● ○ ○ |
| Student Display | ○ ● ○ ○ |
| MPR | ○ ○ ● ○ |
| Library/ Media | ○ ○ ● ○ |
| Functional Landscaping | ○ ● ○ ○ |
| Energy Consumption | ○ ○ ○ ● |
| General Condition | ○ ○ ○ ● |



LEGEND

- Main Entry
- Secondary Entry
- Drop-Off
- Circulation
- Playfields/ Landscape
- Hardcourts
- Play Apparatus
- Parking
- Outer Courtyard
- Trees

UTILIZATION LEGEND

- Kindergarten Classroom
- Classroom
- Science/ Art Lab
- Specialty Classroom
- Special Ed Classroom
- Portable (Color based on Program)
- Child Care (Portable)
- Other Space
- Kindergarten
- #
- S
- A
- M
- C
- RSP
- SAI
- SMG
- OT
- Admin.
- Kindergarten
- Grade Level
- Science
- Art
- Music
- Commons
- Special Ed/Resource
- Specialized Academic Instruction
- Small Group Space
- Occupational Therapy
- Administration

N
SCALE 1:80



Front of School



Main Entrance



Parking and Drop-off



Additional Drop-off location



SAI Portables on eastern side of site



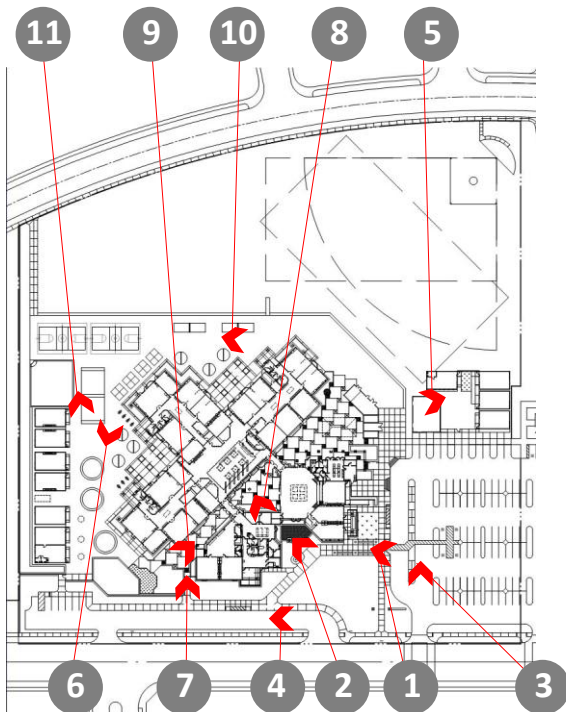
Classroom Portables and Childcare Portables on western side of site



Entrance near Kindergarten Play Structure



Central Courtyard near MPR



KEY MAP



Courtyard near Kindergarten wing



Hardcourts



Play Apparatus toward northwest side of site



12

Playfields



13

Kindergarten Play Yard and Apparatus



14

Lunch Shelter



15

Food Service Entry



16

Outer Courtyard adjacent to Classrooms



17

Bike Racks



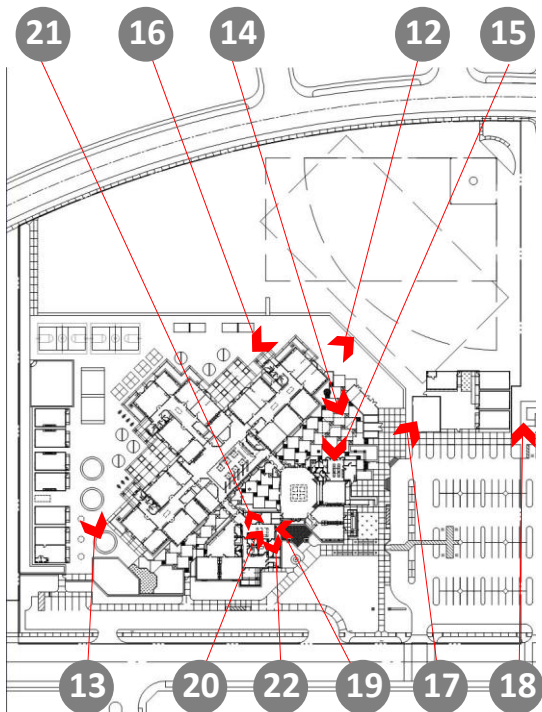
18

Eastern Border of Site near Dovecreek Park



19

Main Office



KEY MAP



20

Waiting Area



21

Conference Room



22

Health Office



23

24

25

26

Staff Lounge

Staff Patio outside Lounge

Staff Workroom

Library/Media Center



27

28

29

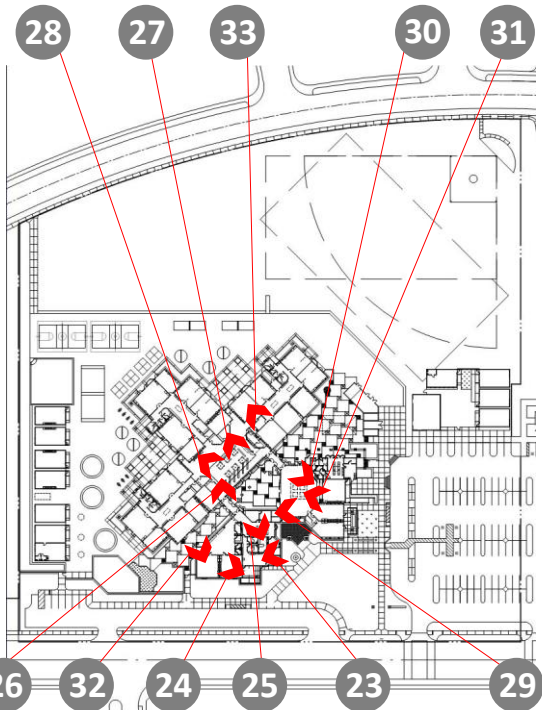
30

Speech Room near Library/ Media Center

Computer Lab in Library/Media Center

Storage Area near MPR

MPR Stage



31

32

33

MPR with access to Central Courtyard

Typical Kindergarten Classroom

Typical Classroom

KEY MAP



Science Classroom



Hallway leading to Classroom Wing



Typical Student Collaborative Area between Classrooms



Satellite Workroom off of Student Collaborative Area



Typical Bathroom



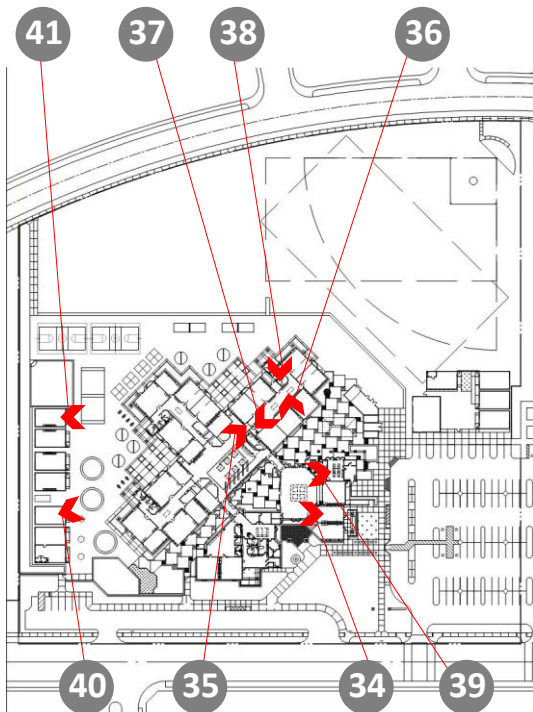
Food Service



Childcare Portable (CC3)



Typical Portable (P8)



KEY MAP

