

## CAMPUS OBSERVATIONS

### Classrooms

- Three (3) Kinder classrooms
- Classrooms connected to collaboration spaces with computers, central to wing;
- Casework at computer stations decreases flexibility in space and may not provide sufficient leg room for computer use
- Classrooms have fixed teaching wall
- Some daylighting from sidelights; no blinds/ shades to control incoming light
- Moveable partitions between some classrooms; not likely opened very often
- A number of classes housed in portables, including 6<sup>th</sup> grade (2), Music (2), Science
- Science classroom needs plumbing/sink
- Music would benefit from permanent structure for winds and vocals
- Upper grade classrooms (with more students per class) are very cramped

### Portables

- Portables are noisy due to HVAC, and smell musty in winter and wet months
- Not very energy efficient; as a result, school prefers to fill main building with classes and use portables for overflow

### Library/ Media

- Centrally located, near K-2 classrooms; 3-5 classrooms must go through Admin or MPR to access; 6<sup>th</sup> in portables
- Both library and media areas inadequate in size; separate computer lab desired to create more space for both functions
- Conference room and Principal office along perimeter; potential for disruptions
- Unique window shape lends itself to creating small nooks for activities/reading

### Food Service

- Too small; need larger food service area or addition of service window to reduce

- congestion; only one (1) entry/ exit
- Lunch shade shelters; no rain protection

### Multi-Purpose Room

- Cannot open up into outdoor space
- Stepped seating
- Stage has partition; is used as music classroom but seems small

### Admin & Support Spaces

- Front office is inadequate; need for larger work zone for Admin Assistant and Clerk, larger health office
- Teacher workroom is small, inadequate to support staff needs; cannot accommodate more than two at once
- Teachers prep in classrooms; large common work area would be desired
- Principal's office has table that seats 6

## CAMPUS OVERVIEW

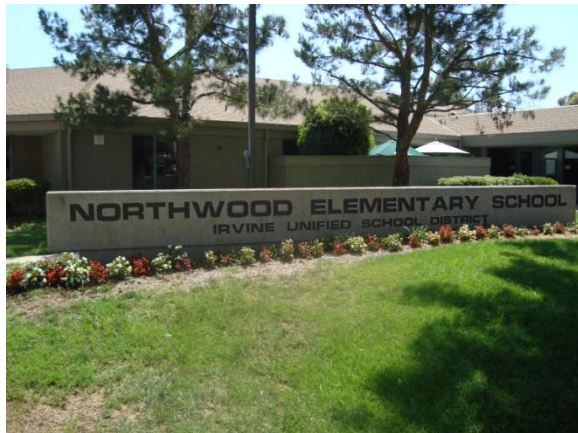
Northwood Elementary School is a K-6, seasonal school directly adjacent to Coralwood Park. The school is situated in a quiet residential setting, and the neighborhood in which the school resides has access to the I-5.

Classroom wings are organized in pod configurations around a central collaboration hallway with 8-10 computers, casework, and sinks. Each hallway feeds directly into either the Multi-purpose Room (MPR) or the Library.

The Administrative area, the Multipurpose Room (MPR), and the Library can be found directly off of the school's central hallway, which serves as a connection between the four classroom wings. Two small courtyards also allow the potential for a more enhanced learning experience outside of the classroom.

Northwood Elementary School is a California Distinguished School and a National Blue Ribbon School. Additionally, the staff has established three main areas of focus to better serve its students: fostering a love of learning, valuing individuals, and enriching learning. Embodying the spirit of No Child Left Behind, Northwood also demonstrates a strong desire to identify student's learning levels and appropriately respond to each individual case to maximize learning. The school also involves its students using a multitude of programs, such as the Northwood Reading Olympics, Lego and Chess Club, and Spirit Days.

Mission Statement: To prepare students to face the challenges of the future and become their best selves.



# Northwood Elementary School



28 Carson | Irvine, CA 92620  
Site Analysis

### General Condition/ Space Use

- Generally well-maintained site
- Staff works around site deficits by using spaces for multiple purposes
- Insufficient classroom space in permanent building to support enrollment
- Desire to replace portables with permanent, to have learning facilities on par with newer schools in District
- School does not have a perimeter fence surrounding entire campus

### Building Systems

- Building was modernized in 2005 including replacement of cooling tower, boiler, and water source heat pumps
- All equipment controlled by Carrier EMS
- Site has photovoltaic panels

### Technology

- Current: 35 computers in Media Center,

- 35 computers in secondary lab (portable), pods of 8-10 computers in each wing; some classrooms have 2 computers each
- Wireless available throughout campus

### Non-traditional Space Uses

- Portable being used for storage, another as computer lab, third as counseling room

### Vehicular Access/ Parking/ Drop-Off

- Parking lot is too small to support vehicular traffic, causing major congestion at drop-off and pick-up times; needs to be larger and redesigned to improve flow
- Late drop-off due to congestion results in student tardiness
- Adding benches at front of school would benefit parents/ students at pick-up time

### Wayfinding

- Main Admin is easy to find with

- Northwood sign at front of school and obvious walkway toward main office
- Once inside, wayfinding is fairly simple, although upper grade wings beyond MPR have slightly confusing layout with multiple entry points

### Safety & Supervision

- Fields behind portables may be difficult to supervise

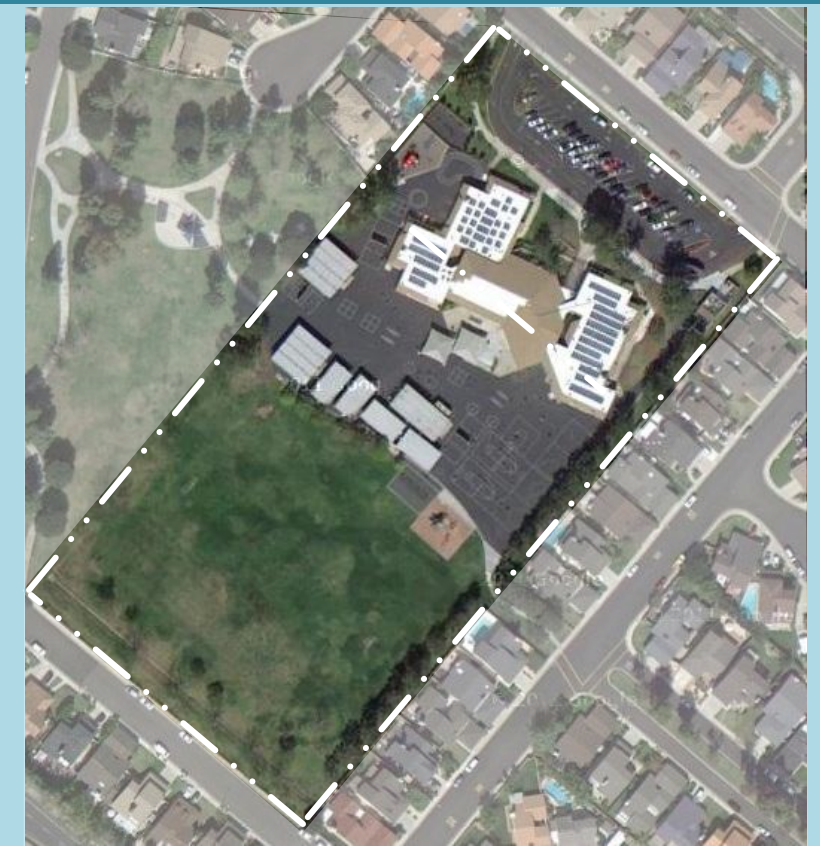
### Courtyard Spaces

- Two interior, one with "Kinder garden" and other could incorporate small instructional garden

### Child Care

- Located in two portables toward back of site (on hardcourts, adjacent to playfields)
- No separate drop-off

LPA





### SCHOOL STATISTICS

Grades:	K-6
Building SF:	27,473
Portable SF:	9,584
2010/11 Enrollment:	555
Year Built:	1981
Modernization:	2008
Site Acreage:	7.6
# Portables:	10+2 CC

### CLASSROOM COUNT

Kindergarten	3
1st & 2nd Grade	6.5
3rd & 4th Grade	4.5
5th & 6th Grade (2 + 2 Portables)	4
Science (1 Portable)	1
Music (2 Portables + 1 Stage)	3
RTI/RSP (1 + 2 Portables)	3
Computer Lab* (1 + 1 Portable)	2
<b>TOTAL</b>	<b>27</b>

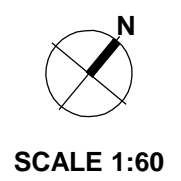
\*One computer lab is not full-size classroom; located in portable

### MEASURES OF QUALITY -

MEASURES OF QUALITY -	+
Wayfinding/ Entry/ Welcome	○ ● ○ ○
Natural Daylighting	○ ● ○ ○
Controllability (Daylight, Lighting, HVAC)	○ ● ○ ○
Flexibility in Classrooms	○ ○ ● ○
Access to Technology	○ ○ ● ○
Collaboration	○ ● ○ ○
Student Display	○ ● ○ ○
MPR	○ ● ○ ○
Library/ Media	○ ● ○ ○
Functional Landscaping	○ ● ○ ○
Energy Consumption	○ ○ ● ○
General Condition	○ ○ ● ○



PLAYFIELDS



### LEGEND

- ←★ Main Entry
- Secondary Entry
- Drop-Off
- Main Circulation
- Playfields/ Landscape
- Hardcourts
- Play Apparatus
- Parking
- Trees

### UTILIZATION LEGEND

- Kindergarten Classroom
- Classroom
- Science/ Art Lab
- Specialty Classroom
- Special Ed Classroom
- △ Portable (Color based on Program)
- CC Child Care (Portable)
- Other Spaces
- K Kindergarten
- # Grade Level
- S Science
- A Art
- M Music
- C Commons
- RSP Special Ed/Resource
- Admin. Administration
- Comp. Computer Lab
- Open Unused Classroom



Front of School



Main Entrance



View of Library windows



Parking and Drop-off



Service Access



Sheltered Lunch Area



Kindergarten Play Apparatus



View of Hardcourts and Portables



KEY MAP



Bike Racks



Basketball Courts and Hardball Courts



Interior Courtyard/Kinder-Garden





12

Childcare Portable



13

Main Office



14

Waiting Area



15

Principal's Office



16

Conference Room



17

Health Office



18

Staff Lounge



19

Staff Patio



KEY MAP



20

Psychologist's Office



21

Resource Center



22

Custodian Office





23

Library



24

Computer Lab in Library



25

MPR Stage



26

Food Service



27

Typical Classroom Hallway/Pod



28

Typical Kindergarten Classroom



29

Typical Classroom



30

Classroom Nook



KEY MAP



31

Typical Portable



32

Childcare Portable



33

Book Storage

