

CAMPUS OBSERVATIONS

Classroom Wings

- Two (2) 3-walled Kinder classrooms share open collaborative area with 2 bathrooms and 'wet' area, and teacher workroom
- Classrooms do not have doors, which creates acoustical issues
- Classrooms have good natural lighting from windows and clerestories; some classrooms have blinds to control lighting while others do not
- Whiteboards exist on one wall of classroom; potentially limits flexibility
- Hallways have casework doubling as computer stations along walls; decreases flexibility of space and may not provide sufficient leg room for computer use
- Lack adequate Music spaces
- No dedicated art classrooms
- Special Ed classrooms are located in main building, mostly in separate wing

- Severe Special Ed rooms have small support spaces, including storage rooms, changing rooms, dedicated bathrooms with portable toilets; no showers
- One (1) dedicated Science portable

Library/ Media

- Centrally located in front wing
- Not directly accessible by all academic classrooms in main building; some must go through exterior courtyard to reach Library from classroom
- Direct adjacency with MPR may result in acoustical issues
- Openness between Admin and Library may also result in acoustical concerns for offices and conference rooms along perimeter

Food Service

- Small; queuing occurs outside where there is limited covered space

- One (1) entry/ exit to outside, one (1) entry/ exit to MPR
- Covered lunch area provides shade but is not rain-proof

Administration

- One main waiting area, as well as seats in health office, and seats outside conference room

Multi-Purpose Room

- Ability to open up into Library for additional seating
- Stage can be used as classroom (moveable partition); stage/classroom can open to outdoor amphitheatre and lunch shelter seating

CAMPUS OVERVIEW

Meadow Park Elementary School is a K-6, seasonal school located directly adjacent to a public park (Meadow Park). The school is situated in a quiet residential setting, and the neighborhood in which the school resides has access to the I-405.

Academic classrooms are organized along double-loaded corridors with the wide hallway space serving as a collaborative area, with casework, desktop computers, and sinks. Each wing feeds into an interior courtyard/atrium, which then provides access to the Multipurpose Room (MPR), Library and the school's main artery.

The Administrative area, the Multipurpose Room (MPR) and the Library form the central core of the campus with the classroom wings stemming off either side. The MPR is equipped with sliding glass doors, which enables the room to open to the Library, and the stage has the ability to open up to an outdoor covered seating area when there is need or interest.

Meadow Park Elementary School is a California Distinguished School and a National Blue Ribbon School. This year, it was named the #1 Elementary School in all of Orange County by the O.C. Register. At Meadow Park, students follow the acronym ROPES: Respect Oneself, Property, Each other and our School. The ultimate goal is to enable each child to apply his or her thoughts and ideas in a responsible way.

Mission Statement: "To be a happy place where all children learn and apply basic skills, think critically and creatively, and live together with a sense of personal pride as they develop essential life skills for the future."



Meadow Park Elementary School



50 Blue Lake South | Irvine, CA 92614
Site Analysis

General Condition & Aesthetic

- Front façade of school could be enhanced to improve 'curb appeal'
- Generally well-maintained but in need of an update

Building Systems

- HVAC is provided by multiple small water source heat pumps per classroom, which are in poor condition
- Recently replaced cooling tower, boiler, and heat pumps are controlled by an Andover EMS
- Site has photovoltaic panels

Vehicular Access/ Parking/ Drop-Off

- No dedicated drop off area
- Parking lot is small and congested

Technology

- One computer lab, computers in hallways, computers in portable, and some classrooms have 1-2 computers

Outdoor Spaces

- Overall nice aesthetic; small trees exist near picnic tables in courtyard areas, which may provide more shade in future
- A number of planters and seat walls exist
- Inner courtyards have a good amount of shade due to overhangs
- Meadow Park ES and Southlake MS share access to public park, Meadow Park, located between them

Personalization

- Artwork in bathrooms creates a more personal feel

Supervision

- Areas near and around portables may be difficult to supervise

Child Care

- Located toward back of campus near one set of portables (housing science, 5th, and 6th graders)
- No separate drop-off

LPA





SCHOOL STATISTICS

Grades:	K-6
Building SF:	42,053
Portable SF:	9,600
2010/11 Enrollment:	596
Year Built:	1988
Modernization:	(2013)
Site Acreage:	6.1
# Portables:	10+2 CC

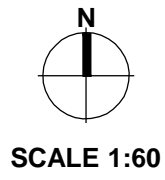
CLASSROOM COUNT

Kindergarten	2.5
1st & 2nd Grade	5
3rd & 4th Grade	5.5
5th & 6th Grade (3 + 2 Portables)	5
Science (1 Portable)	1
Music (Stage)	1
Special Ed (SDC/ SAI/ OT/ RSP/ Rtl/ - 8 + 4 Portables)	12
Title 1 (1 Portable)	1
Computer Lab (1 + 1 Portable)	2
TOTAL	35

MEASURES OF QUALITY -

MEASURES OF QUALITY -	+
Wayfinding/ Entry/ Welcome	○ ○ ● ○
Natural Daylighting	○ ○ ● ○
Controllability (Daylight, Lighting, HVAC)	○ ● ○ ○
Flexibility in Classrooms	○ ○ ● ○
Access to Technology	○ ● ○ ○
Collaboration	○ ● ○ ○
Student Display	○ ● ○ ○
MPR	○ ○ ● ○
Library/ Media	○ ○ ● ○
Functional Landscaping	○ ○ ● ○
Energy Consumption	● ○ ○ ○
General Condition	○ ○ ● ○

Site Analysis - Meadow Park Elementary School
50 Blue Lake South | Irvine, CA 92614



LEGEND

- ★ Main Entry
- ➔ Secondary Entry
- ➡ Drop-Off
- ➡ Circulation
- Playfields/ Landscape
- Hardcourts
- Play Apparatus
- Parking
- Courtyard
- Trees

UTILIZATION LEGEND

- Kindergarten Classroom
- Classroom
- Science/ Art Lab
- Specialty Classroom
- Special Ed Classroom
- △ Portable (Color based on Program)
- CC Child Care (Portable)
- Other Space
- K Kindergarten
- # Grade Level
- S Science
- A Art
- M Music
- OT Occupational Therapy
- RSP Special Ed/Resource
- Rtl Response to Intervention
- SAI Specialized Academic Instruction
- SDC Special Day Class
- Admin. Administration
- Comp. Computer Lab
- Open Unused Classroom



1 Front Entrance



2 Entrance near Kindergarten Play Area



3 Parking



4 Bike Racks



5 Food Service Entry



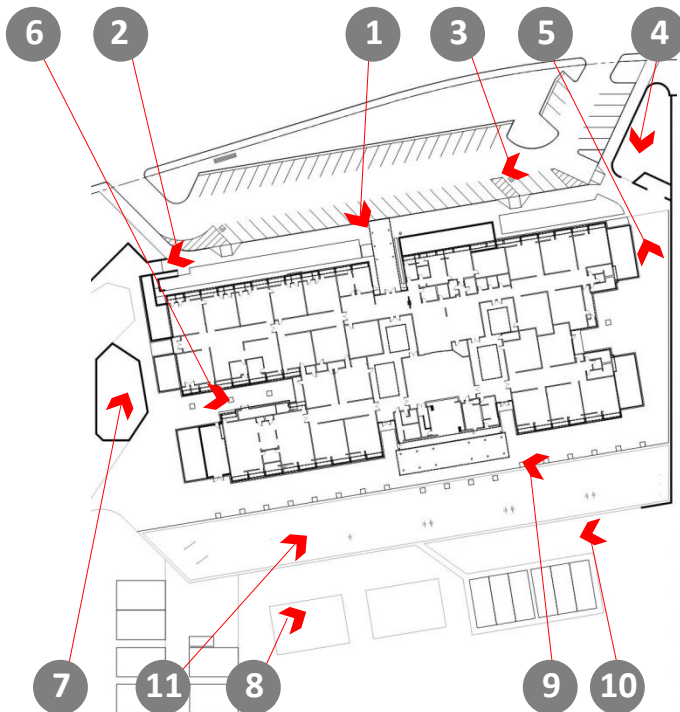
6 Kindergarten Lunch Tables



7 Kindergarten Play Area



8 Play Apparatus near Portables



KEY MAP



9 Covered Lunch Shelter



10 Portables



11 Hardcourts



Interior Courtyards



Outdoor MPR Stage



Main Office



Staff Lounge



Staff Patio



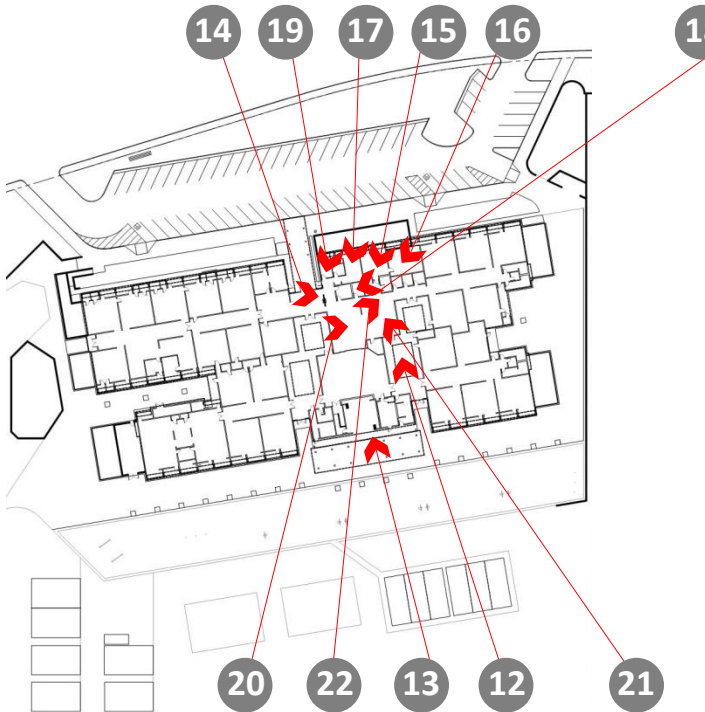
Staff Workroom



Conference Room



Health Office



KEY MAP



Library



Library Collaboration Tables



Main Hallway



23

MPR



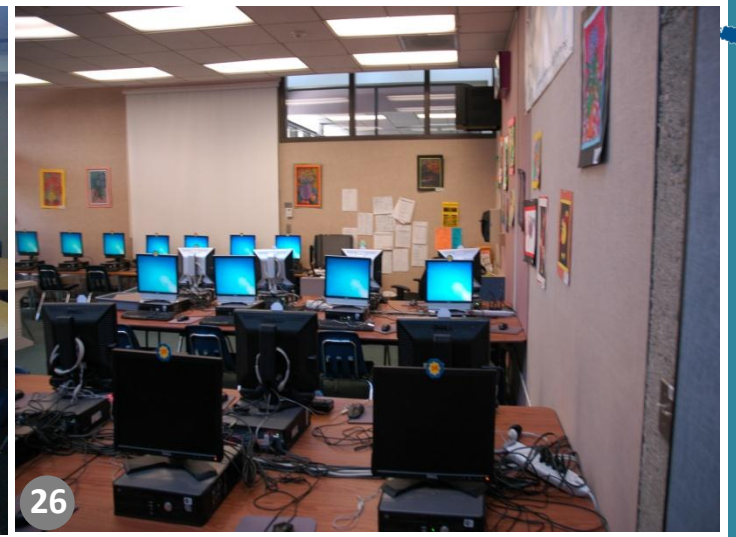
24

Music Classroom (MPR Stage)



25

Resource Specialist



26

Computer Lab



27

Typical Classroom Hallway



28

Typical Classroom



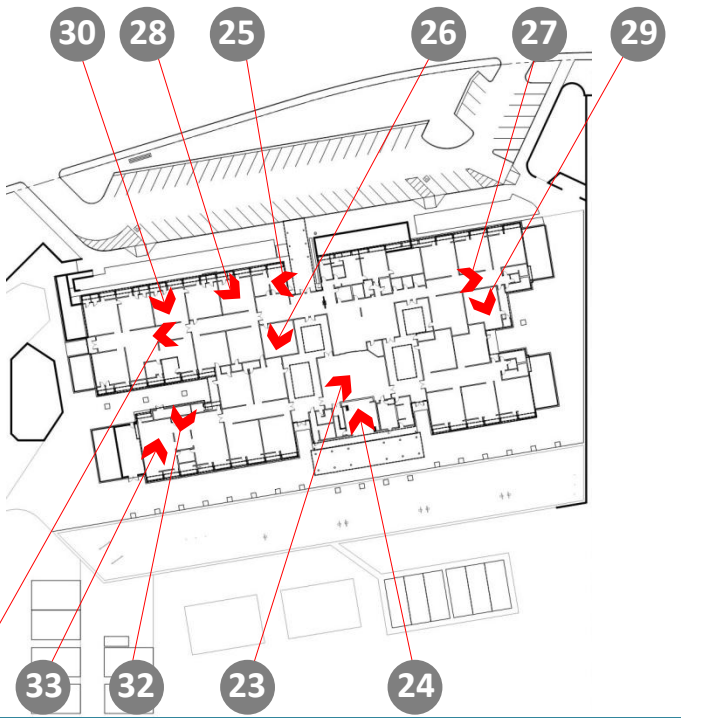
29

Typical Classroom Nook



30

Special Education Classroom



KEY MAP



31

Special Education Hallway



32

Kindergarten Wet Area



33

Typical Kindergarten Classroom





Portable Classroom (P9)



Portable with Computer Lab (P7)



Typical Childcare Portable



Food Service



Typical Bathroom



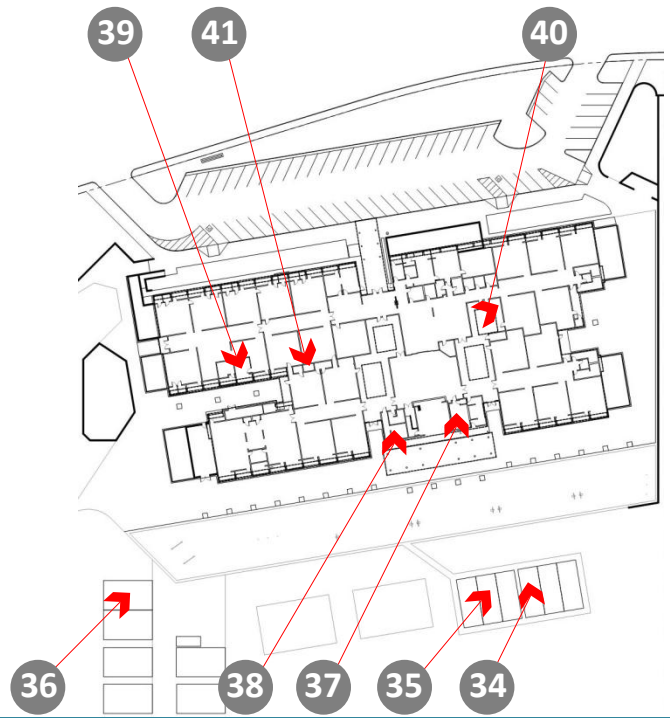
Physical Education Equipment Storage



Student Tile Artwork



Classroom Storage Closet



KEY MAP

