

CAMPUS OBSERVATIONS

Classrooms

- Currently sufficient number of Classrooms but will not be able to accommodate projected increased enrollment
- Fluorescent lighting limits visibility and legibility of info on projection screens
- Depending on layout, some classrooms described as flexible, while others not
- Strong desire for more areas that can be used as flexible small group zones
- Many classrooms have access to outdoor areas, but not frequently used. This could be due to lack of shade, seating options
- Art class requires casework
- Need dedicated music classrooms
- Special Ed classrooms seem integrated

Library/ Media

- Does not support current needs

- Only 24 computers in media center; need for 36 (to support one class of students)
- Furniture bulky and somewhat heavy, limiting flexible use of space
- Counseling offices along perimeter may find it noisy; potential for student discomfort due to visibility of offices

Food Service

- Is inadequately-sized for the current student population
- Two (2) entries/ exits to food service area; custodial office being used to dispense food (service window)
- There is no area outside with rain protection for queue
- No lunch shelter over tables

Performing Arts & Fine Arts

- Performing Arts facilities do not support current needs, but Fine Art classrooms do
- Performing Arts building needs larger

- capacity; needs to house at least half the student population
- Cannot expand into outdoor space when needed
- Stage can be used as classroom (with moveable partition)

Admin & Support Spaces

- Main Office entry remote from main parking; somewhat difficult to find
- Need conference room (to hold at least 10 people) in Admin building
- Health office small, restroom is adequate
- Currently have only one workroom, used by all teachers
- Need for additional teacher workroom in 300 building

Physical Education

- Need for more storage
- Desire to have gym facility

CAMPUS OVERVIEW

Lakeside Middle School is a seasonal school serving students in 7th and 8th grade. The school is situated directly next to Lemongrass Park in a quiet residential setting and is located in the Woodbridge planning area.

There are six distinct buildings: Administration, Media Center/ Classrooms, Cafeteria/ Classroom, Performing Arts/Music, Lockers and Field House. The main campus is configured around an exterior courtyard with the media center at the center of the campus.

Lakeside Middle School's academic success stems from its ability to offer choices for its students. The following enrichment opportunities are offered to allow Lakeside students to explore and develop their interests and talents: instrumental and choral music classes, drama, art, ceramics, home arts, public speech and debate, media literacy (video production), yearbook, journalism, foreign languages, law and society, science, and mathematics. In addition, Lakeside takes an interdisciplinary team approach for teaching language arts and social sciences. Active learning is incorporated into both the social science and language arts curricula through hands-on projects using research skills, writing activities, simulations, cooperative learning, dramatizations, oral presentations, and use of higher level thinking skills.

Mission Statement: "...every middle school child has the capacity to be compassionate and giving; to be perceptive, creative, and informed; to be industrious, ethical and a risk-taker; to be poised; to persevere and to celebrate each day with optimism. Therefore, in the pursuit of becoming lifelong learners, Lakeside Middle School students will be able to: communicate information, ideas and thoughts utilizing appropriate skills in writing, reading, speaking, listening, and artistic expression."



Lakeside Middle School

3 Lemongrass | Irvine, CA 92604
Site Analysis



General Condition & Aesthetic

- Grounds and planters are being improved to add aesthetic value
- Campus could use more functional landscaping, providing shade and more seatwalls, for gathering opportunities
- Lockers need updating
- No covered walkways between buildings

Building Systems

- HVAC was included in modernization in 2009 which replaced all water source heat pumps at the site
- Cooling tower was replaced in 2003, and all units are controlled by Andover controls
- Site has photovoltaic panels

Technology

- Two small computer labs that cannot

- support full classes; need for these labs to have 36 computers each
- Currently have one laptop cart which requires updates and new technology; desire for more laptops for checkout, to support curriculum

Collaborative Areas

- Very few spaces for small group work adjacent to classrooms
- Desire to have a space with technology access where large group events can be held (e.g., for showing documentaries, accessing other media)
- Outdoor areas for learning and collaborating do not currently exist; not desired at this point

Space Usage

- Former copy room now counseling office
- Rm 209 used as SLC zone, 15-18 students

- Rm 221 (storage room) currently used for Project Success or SLP office
- Size of room 200 too small for traditional classroom, too large to be SLC zone

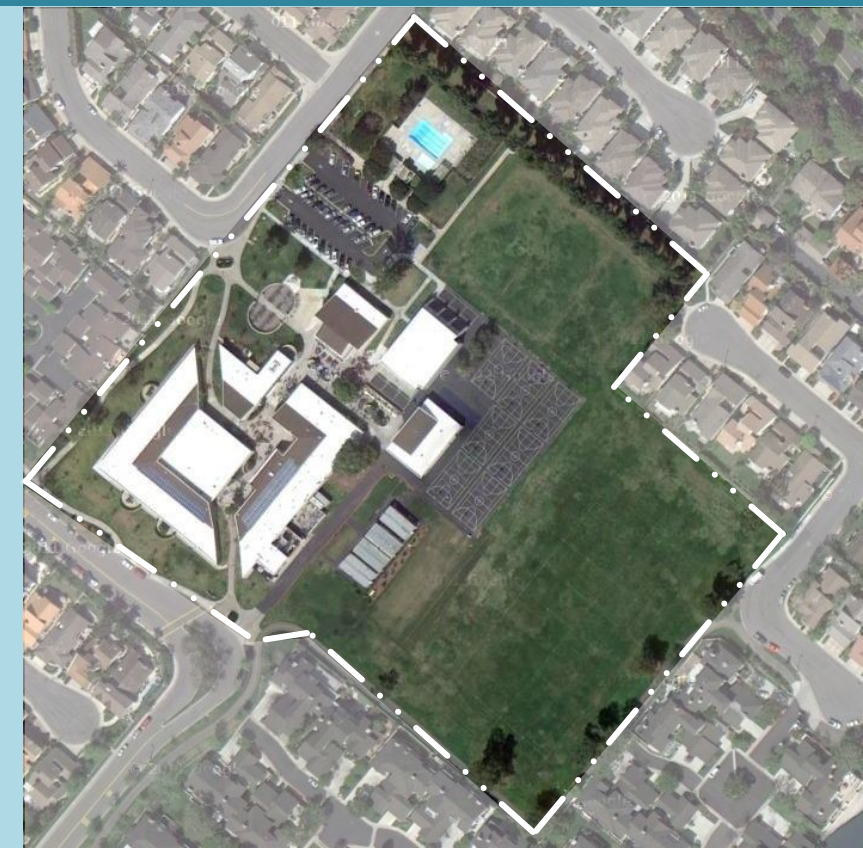
Safety & Security

- Portables are not presently wired into security system, but need to be

Vehicular Access/ Parking/ Drop-Off

- Student drop-off is problematic with current set-up; safety issues and congestion
- Current drop-off options curbside along Lemongrass and Stone Creek entrances

LPA





SCHOOL STATISTICS

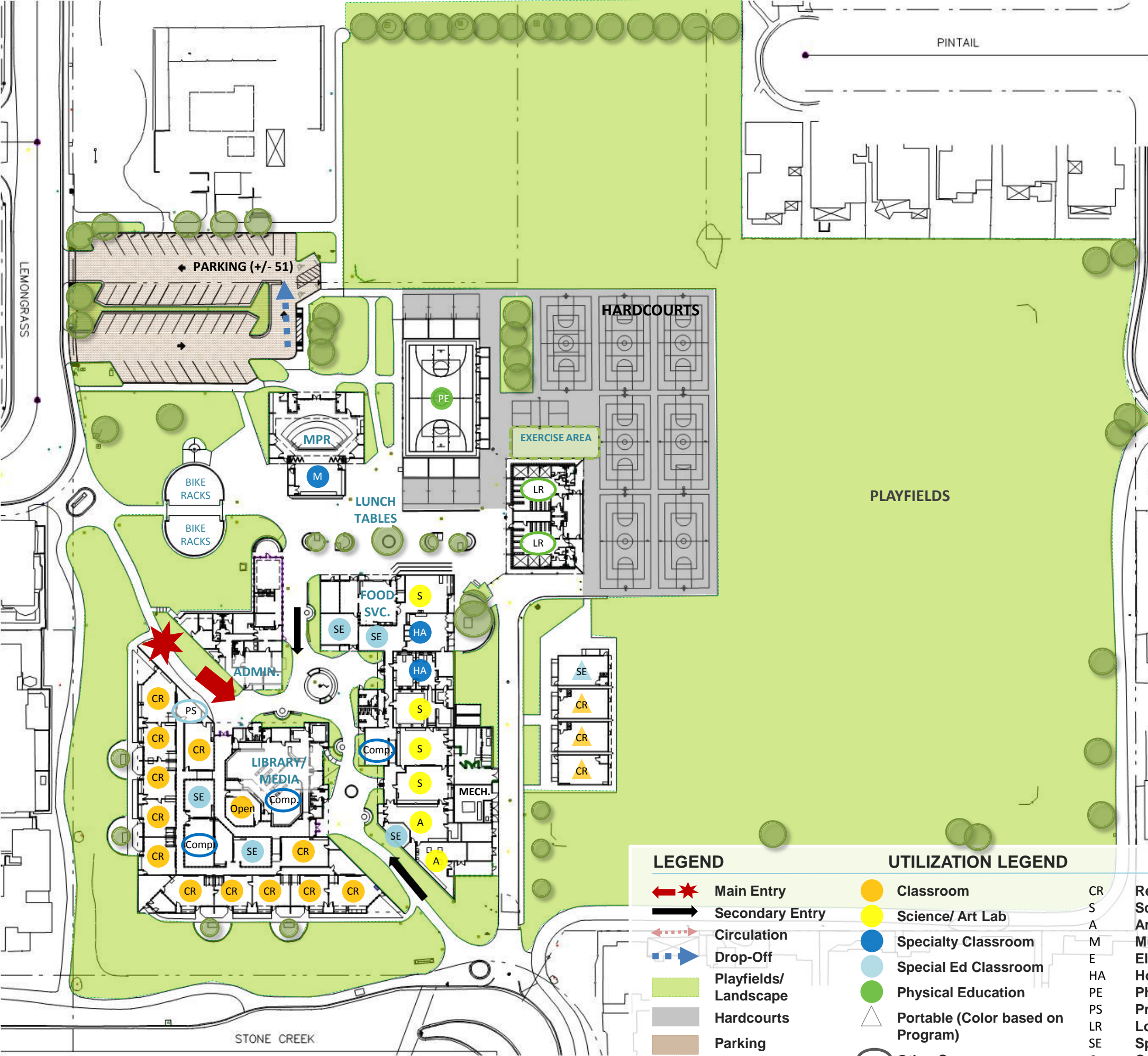
Grades:	7-8
Building SF:	63,522
Portable SF:	3,840
2010/11 Enrollment:	713
Year Built:	1979
Modernization:	2008/2009
Site Acreage:	16.9
# Portables:	4

CLASSROOM COUNT

General Classrooms (3 Portables)	15
Science	4
Art	2
Music (Stage)	1
Special Education (1 Portable)	6
Computer Lab	3
Other	2
Open/ Unused	1
TOTAL	34

MEASURES OF QUALITY - +

Wayfinding/ Entry/ Welcome	○ ● ○ ○
Natural Daylighting	○ ● ○ ○
Controllability (Daylight, Lighting, HVAC)	○ ● ○ ○
Flexibility in Classrooms	○ ● ○ ○
Access to Technology	○ ● ○ ○
Collaboration	● ○ ○ ○
Student Display	○ ● ○ ○
MPR	○ ● ○ ○
Library/ Media	○ ● ○ ○
Functional Landscaping	○ ● ○ ○
Energy Consumption	○ ○ ● ○
General Condition	○ ● ○ ○



LEGEND

- ➔★ Main Entry
- ➔ Secondary Entry
- ➔ Circulation
- ➔ Drop-Off
- Playfields/ Landscape
- Hardcourts
- Parking
- Trees

UTILIZATION LEGEND

- Classroom
- Science/ Art Lab
- Specialty Classroom
- Special Ed Classroom
- Physical Education
- △ Portable (Color based on Program)
- Other Space
- CR Regular Classroom
- S Science
- A Art
- M Music
- E Elective
- HA Home Arts
- PE Physical Education
- PS Project Success
- LR Locker Room
- SE Special Education
- Comp. Computer Lab
- Open Unused Classroom



1

Street View of Parking Lot and Front of School



2

Administration Entrance



3

Parking Lot



4

Central Flagpole



5

Bike Racks



6

Covered Basketball Court



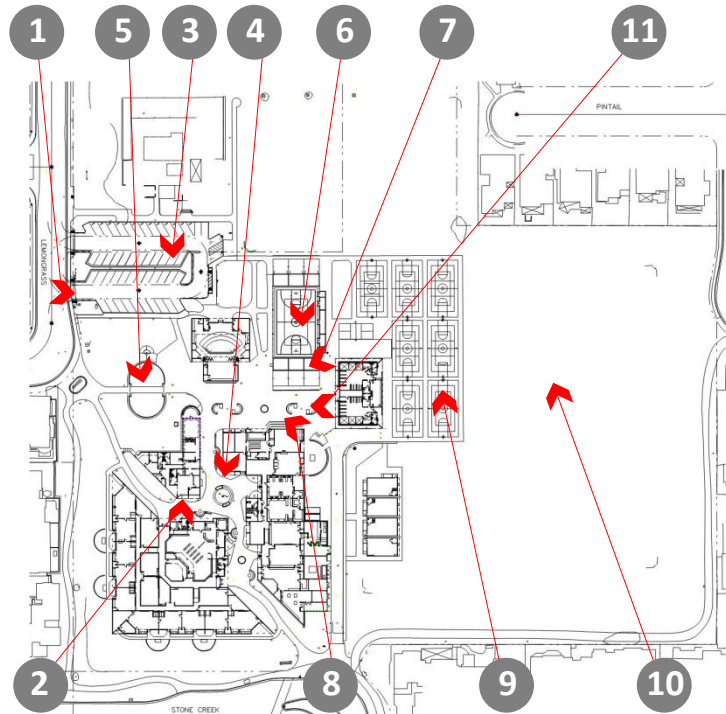
7

Hardball Courts



8

Food Service Queue



KEY MAP



9

Basketball Courts



10

Playfields



11

Lunch Tables





12

Service Access



13

Performing Arts Entrance



14

Learning Center Entrance



15

Unified Arts Entrance



16

Locker Room Entrances



17

Portables



18

Outdoor Seating Area



19

Reception & Main Waiting Area



KEY MAP



20

Waiting Area near Principal's Office



21

Principal Office Entrance



22

Staff Lounge Entrance



23

Staff Workroom



24

Staff Lounge



25

Staff Patio



26

Health Office



27

Library



28

Library Main Desk



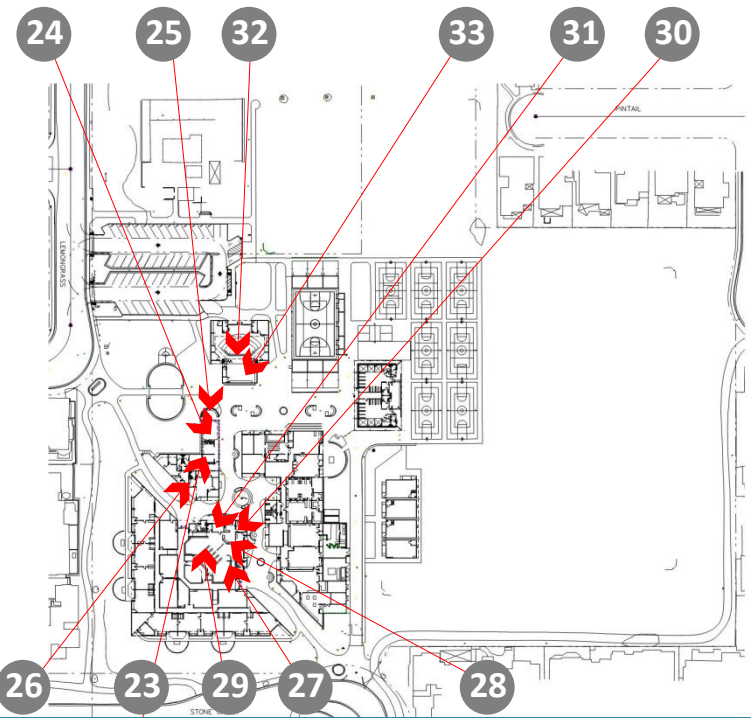
29

Computers in Library/Media Center



30

Library Storage



KEY MAP



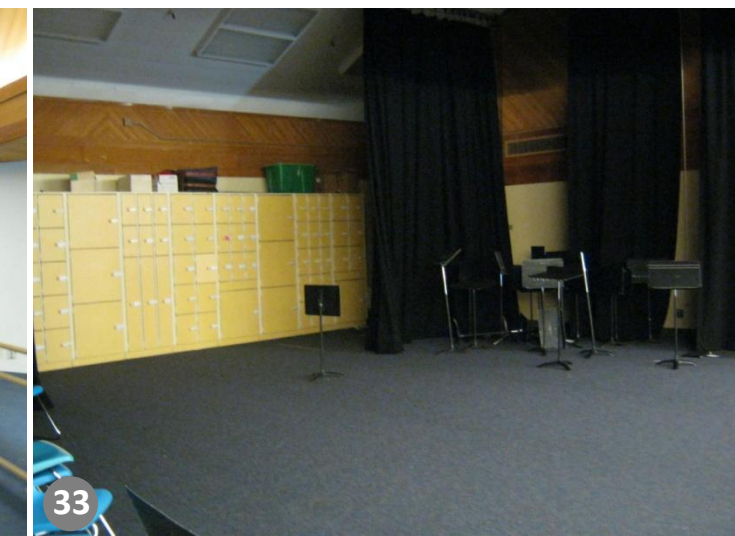
31

Psychologist Office



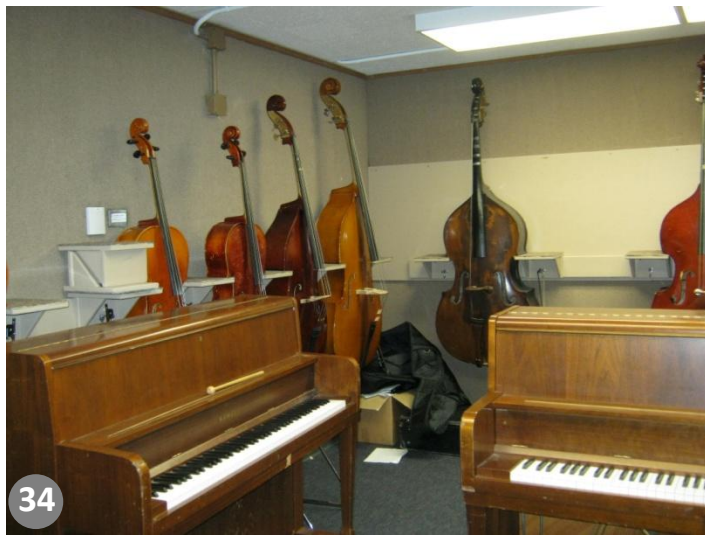
32

MPR



33

MPR Stage



34

Instrument Storage



35

Student Activity Center (SAC)



36

Food Service



37

Office & Serving Window



38

Girls' Locker Room



39

Boys' Locker Room Showers



40

Locker Room Equipment Storage



41

Typical Hallway



KEY MAP



42

Typical Classroom Entrance



43

Typical Classroom



44

Home Arts Classroom



45

Book Room/ "Green Room"



46

Computer Lab



47

Science Lab



48

Science Workroom



49

Art Classroom (312)



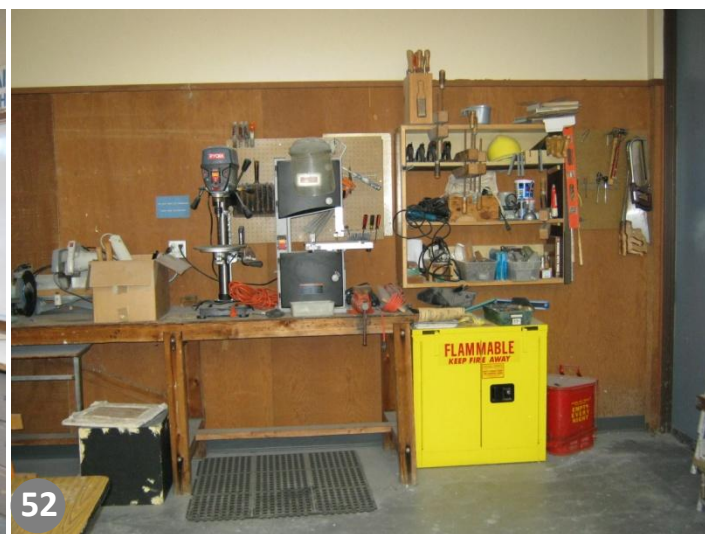
50

Faculty Office



51

Ceramics Classroom



52

Woodshop

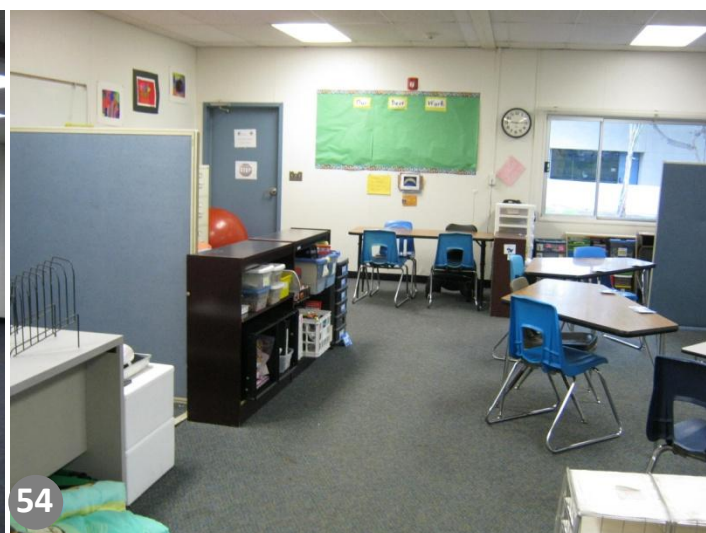


KEY MAP



53

Typical Portable



54

Special Education Portable



55

Typical Bathroom