

CAMPUS OBSERVATIONS

Classrooms

- Classroom buildings are organized by department and each have one floor
- Classrooms vary in levels of daylighting based on building (e.g., math and foreign language have large windows, science and humanities have fewer/smaller windows)
- Aside from pullout spaces, most Special Ed and Adult Ed classrooms are located in portables
- Lack of student collaboration areas

Library/ Media

- Located in Humanities Building
- Bright space with many windows, clerestories, and very high ceilings
- Abundance of computers lining walls; lacks flexibility

Food Service

- Located in Administrative Building; small in size
- Service windows located inside Admin. Bldg lobby as well as oriented toward outdoor queuing area

Theater & Performing Arts

- Large theater with tiered seating and stage
- Seems adequate in supporting music program, large groups, and school performances

Physical Education & Athletics

- Practice gym has poor acoustics ; limits ability to use for large group events
- Dance and fitness rooms in great condition

Admin & Support Spaces

- Teacher prep rooms located in each department building

CAMPUS OVERVIEW

Irvine High School is one of four comprehensive high schools in the Irvine Unified School District, serving students in grades 9-12. The school is situated next to Heritage Park in a residential setting, directly adjacent to the I-5, not far from the 261 toll road.

The campus has a geometric aesthetic with classroom buildings of various shapes; it is organized by department, with separate buildings for distinct learning communities, including: foreign language, math, humanities, science, and unified arts. The building that houses the Student Center and Administration is centrally located on the academic side of the campus, with a walkway and stairs/ramp connecting it to the front parking lot. The Library/Media Center is most convenient to access from the Humanities department, which is located in the same building. The other classroom buildings are in close proximity.

Irvine High strongly emphasizes a positive behavioral intervention and support program through its acronym, **IHS:**

Integrity: firm adherence to a code of moral values; honesty; incorruptibility

Honor Yourself & Others: a keen sense of ethical conduct toward one's self and to the whole community

Social Responsibility: acting with empathy and concern towards family, school and the global community

Mission Statement: "to enable all students to become contributing members of the society, empowered with the skills, knowledge, and values necessary to meet the challenges of a changing world, by providing the highest quality educational experience [the school and its stakeholders] can envision."



General Condition & Observations

- Some buildings have been modernized
- Problems with HVAC system throughout; too hot or too cold in particular areas
- Gates connected to each main building enclose the campus

Building Systems

- HVAC is provided by a mix of vintages of equipment
- Original 1976 air handlers in poor condition are served by 1995 chillers in fair condition
- Most equipment is controlled by an Andover EMS
- School site has photovoltaic panels

Technology

- Concern about technology and long-term maintenance of devices (e.g., LCDs)

Non-Traditional Space Uses

- Hallway used as office space (and group and testing area for Special Ed) in foreign language building

Wayfinding

- Front entrance not visible from front parking lot; but stairs lead to building
- Building signage is fairly large and helpful; campus might otherwise be confusing to navigate
- Simple room numbering system aids with wayfinding

Student Display

- Artwork and awards displayed in various locations (e.g., display case in Theater lobby, ceiling tiles in Unified Arts Bldg.)

Outdoor Gathering Spaces

- Stepped areas and seat walls provide opportunities for outdoor collaboration areas
- Outdoor amphitheatre can be used for outdoor learning and gathering; need more shade

Irvine High School



4321 Walnut Avenue | Irvine, CA 92604
Site Analysis

LPA



SCHOOL STATISTICS

Grades:	9-12
Building SF:	189,606
Portable SF:	7,680
2010/11 Enrollment:	1948
Year Built:	1976
Modernization:	Some Bldgs.
Site Acreage:	59.1
# Portables:	8

CAPACITY

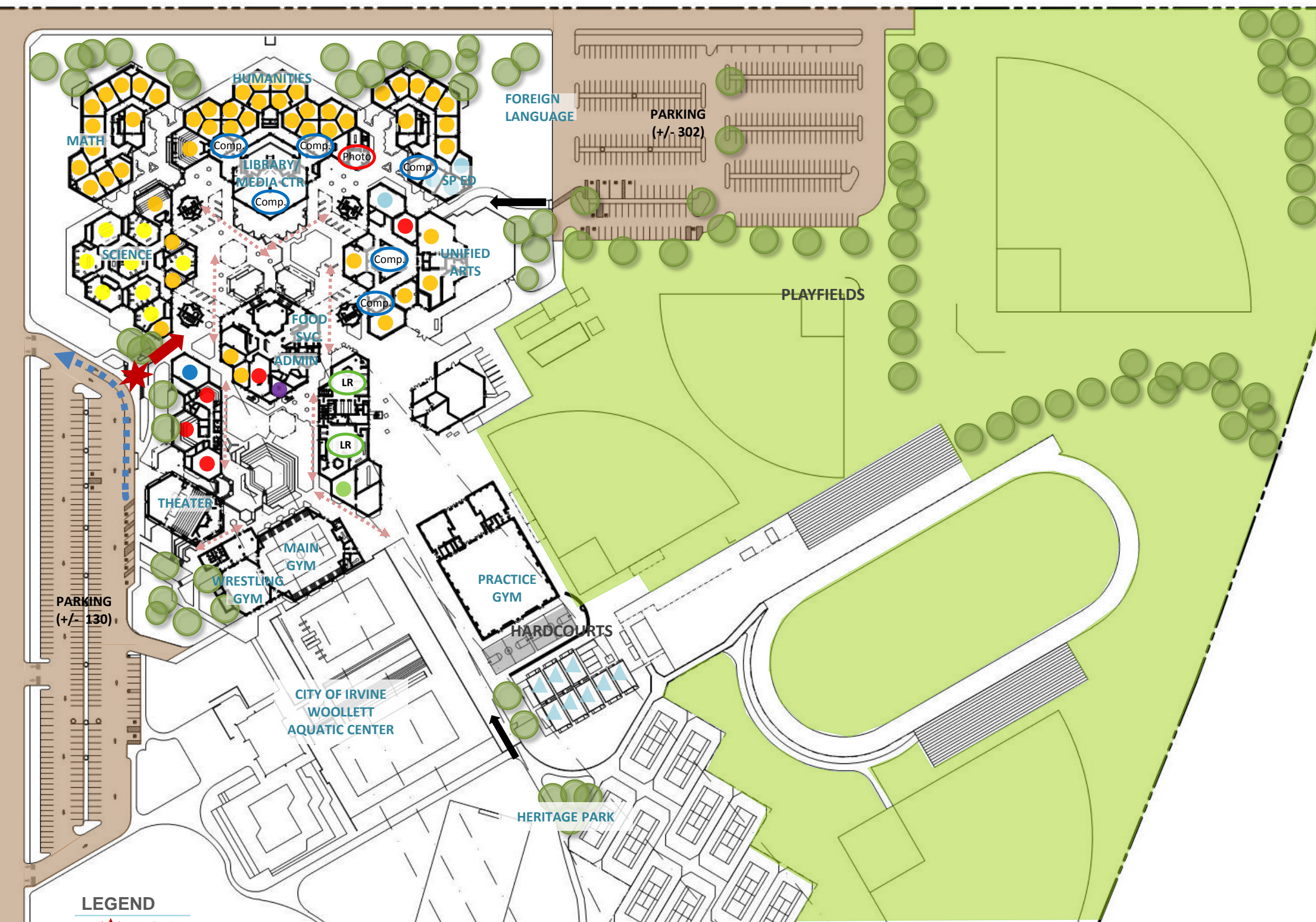
65 Standard Classrooms
4 SDC
69 SUBTOTAL
8 Portables
1 ASB
1 Physical Education
79 TOTAL

UTILIZATION LEGEND

- Classroom Clusters
- Science
- Business/Design/Engin.
- Special Ed (SDC/SH)
- Physical Education
- Perf. Arts/Multi Media
- ASB/Library/Stu. Union
- △ Portable (Color based on Program)
- Other Spaces

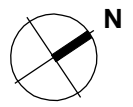
LEGEND

- ★ Main Entry
- ➔ Secondary Entry
- ➔ Drop-Off
- Playfields/Landscape
- Hardcourts
- Play Apparatus
- Parking
- Trees



Site Plan

Second Floor



SCALE 1:150



Front of School



Gated Access to School



Main Parking Lot



Secondary Parking Lot



Outdoor Amphitheatre



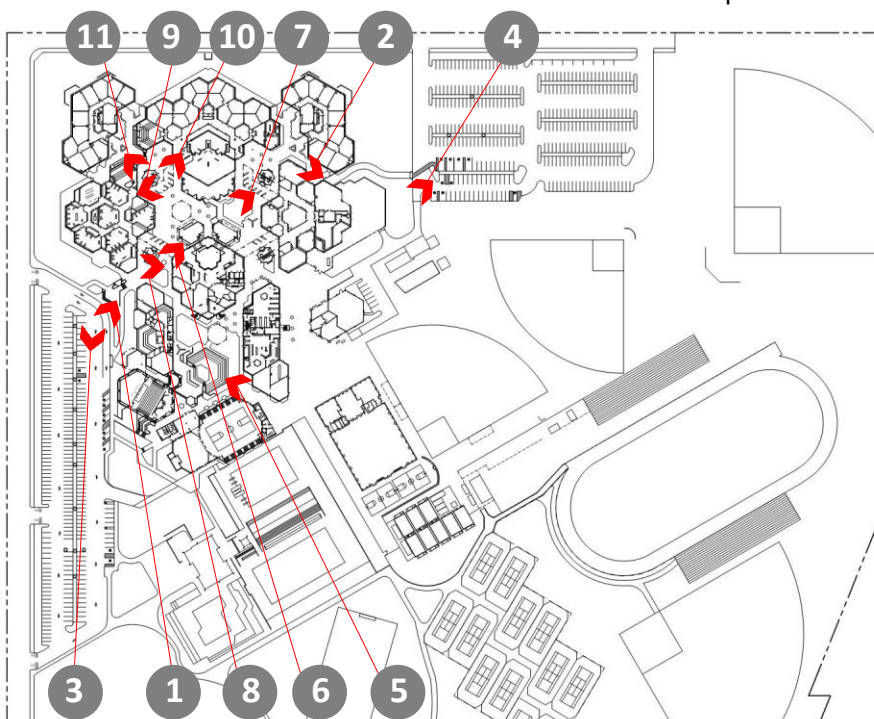
Covered Seating



Covered Locker Area



Student Center & Administration Building Entrance



KEY MAP



Science Building Entrance



Humanities Building Entrance



Math Building



Foreign Language Building



Physical Education Building



Theatre Entrance



Practice Gymnasium



Portables and adjacent Garden



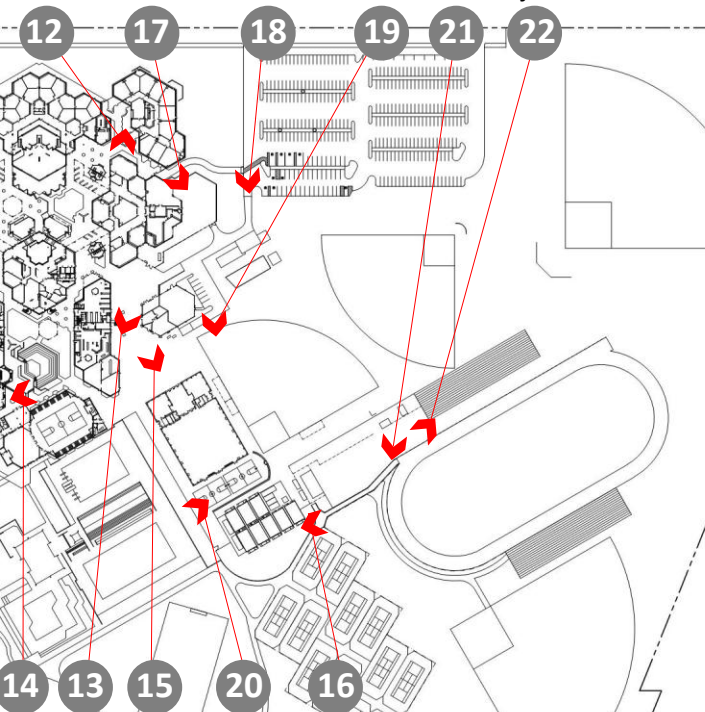
Automotive Tech Yard



Service Entry/Access



Baseball Field



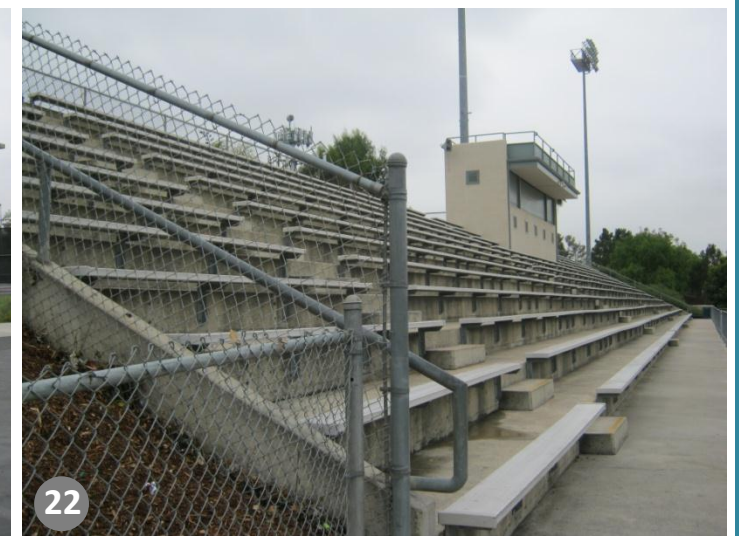
KEY MAP



Basketball Courts near Portables



Track Entrance



Field Seating



23

Student Center & Administration



24

First Floor Administration



25

Attendance Office



26

Health Office



27

ASB



28

Kitchen



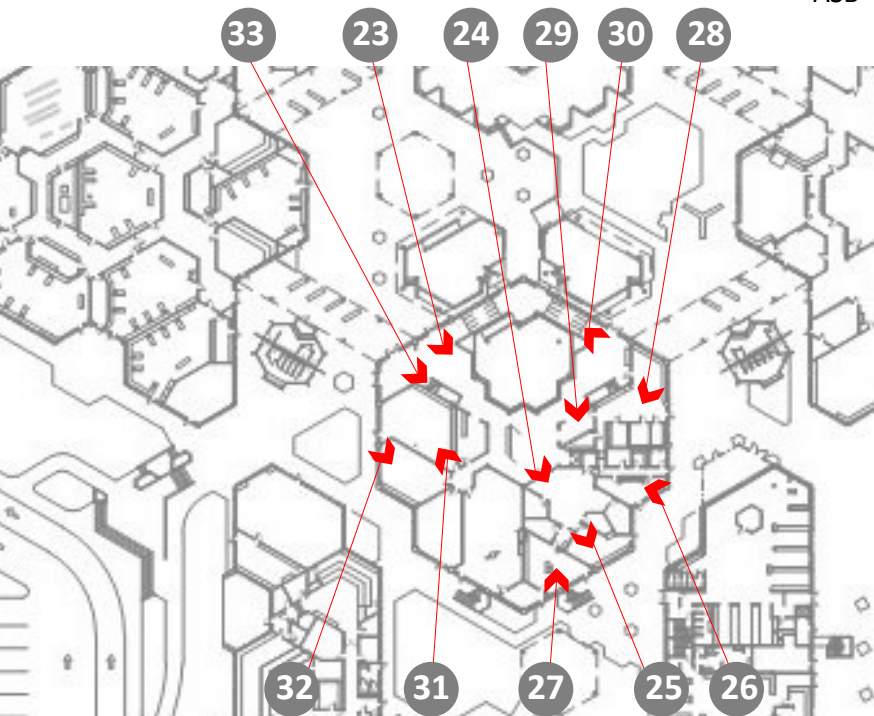
29

Food Service



30

Food Carts in Student Center



KEY MAP



31

Life Center



32

Student Center Classroom (SC9)



33

Stairs to Second Floor Administration



34

Second Floor Administration



35

Principal's Office



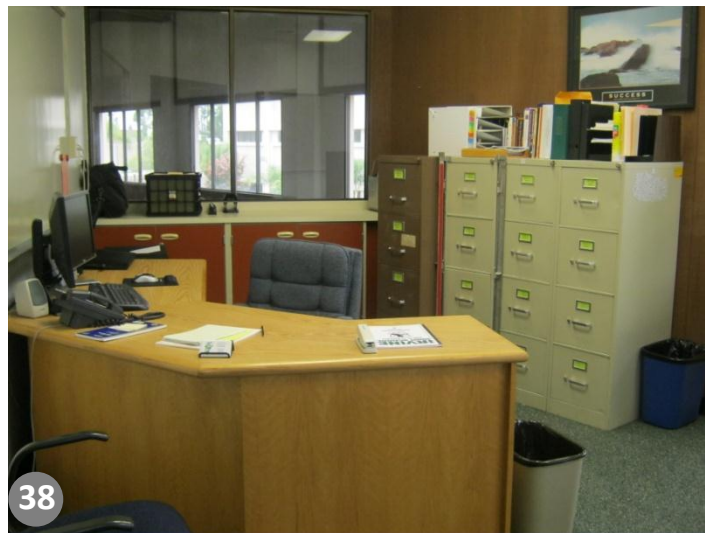
36

AP Office



37

Large Conference Room (1)



38

Psychologist's Office



39

Waiting Area near Discipline



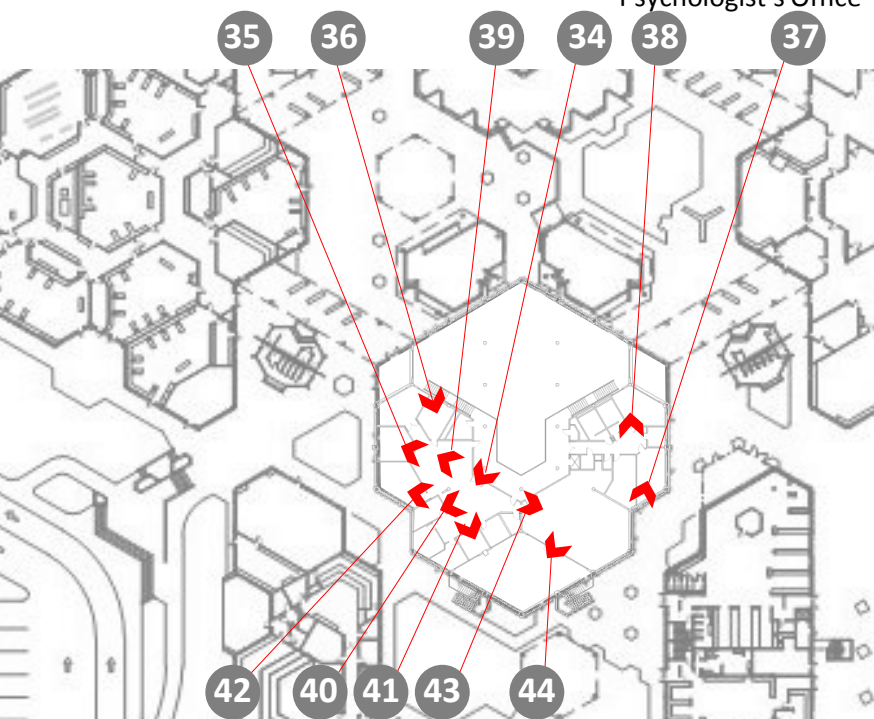
40

Records Office



41

Counselor's Office (3)



KEY MAP



42

Staff Workroom



43

Staff Lounge



44

Staff Patio



Typical Science Classroom (S2)



Science Large Group Instruction



Science Staff Workroom



Typical Math Classroom (M11)



Typical Staff Workroom (Math)



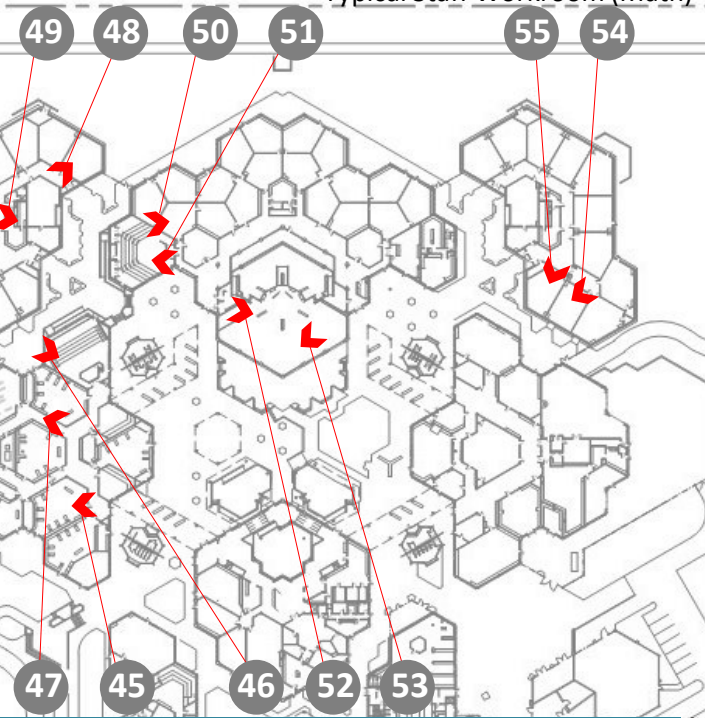
Typical Humanities Classroom (H1)



Humanities Large Group Instruction



Library



KEY MAP



Library Computer Area



Typical Foreign Language Classroom (F2)



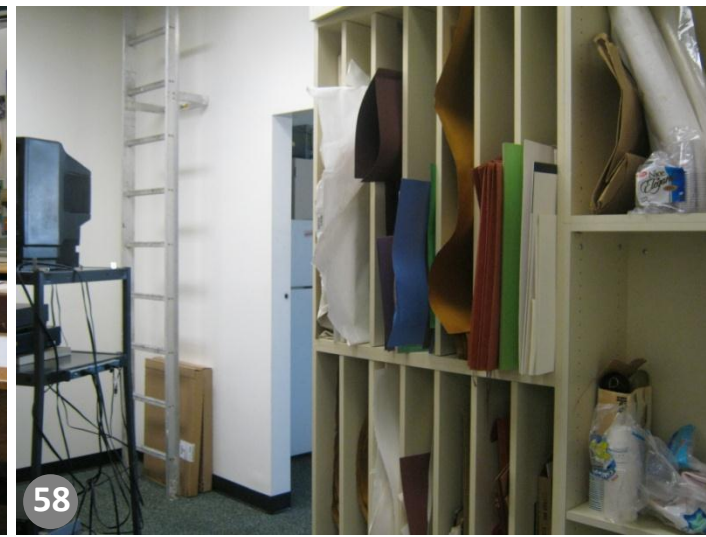
Computer Lab (F1)



Ceramics Classroom



Crafts Classroom



Art Workroom



Ceiling in Unified Arts Hallway



Automotive Shop



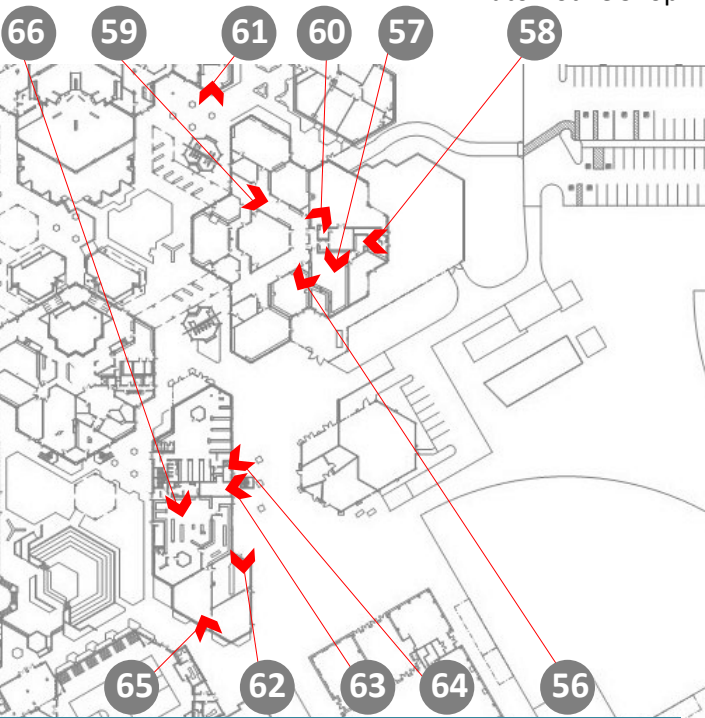
Photography



Coach's Office



Physical Trainer



KEY MAP



Home Team Room



Weight Room



Boy's Locker Room



P.E. Office (Men's)



Physical Education Staff Workroom



Practice Gym



Dance Room



Dance Staff Office



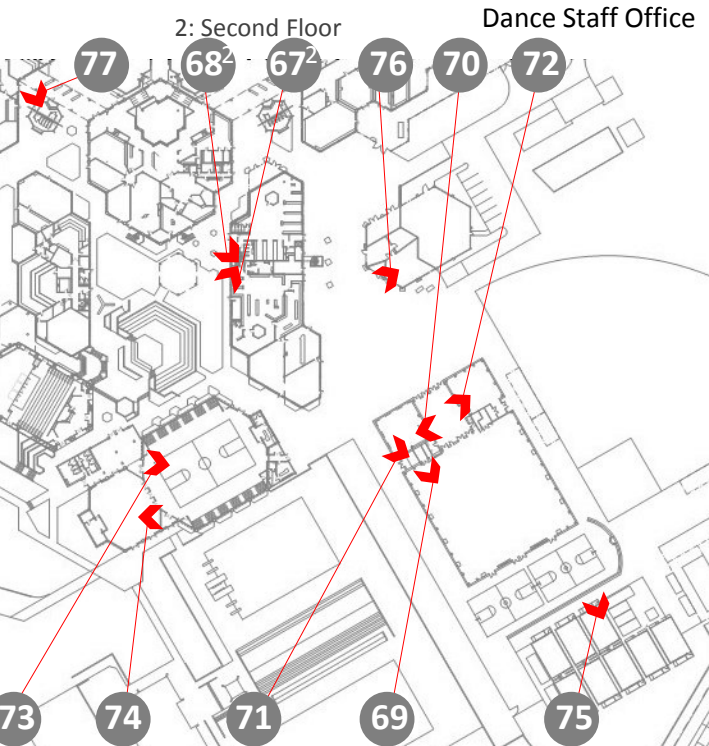
Weight Room



Gymnasium



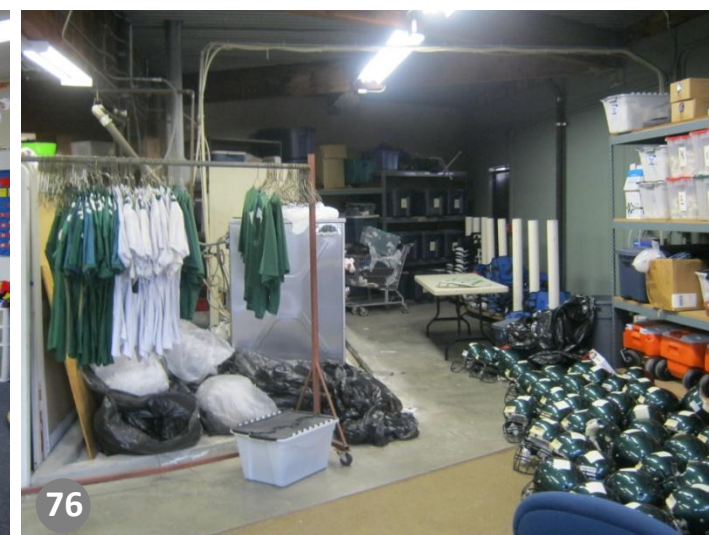
Wrestling Room



KEY MAP



Special Education Portable (P9)



Custodial Building Storage



Typical Bathroom



78

Drama



79

Girls' Dressing Room



80

Business Lab



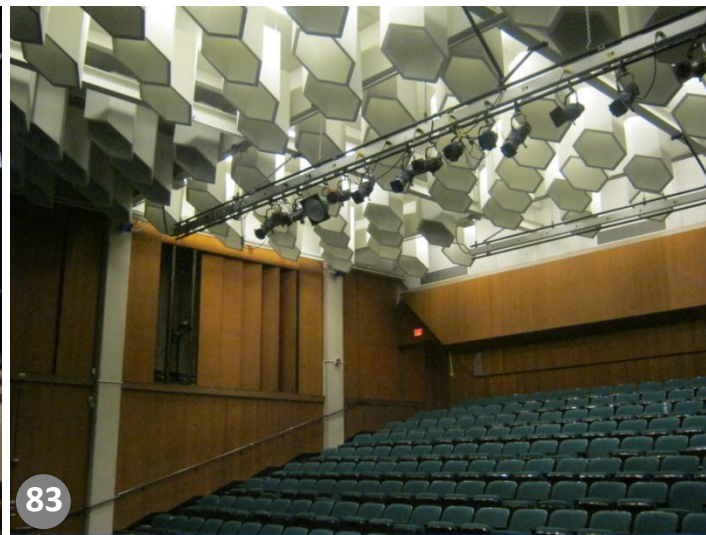
81

Display Cases in Theatre Lobby



82

Theatre



83

Theatre Ceiling



84

Instrumental Classroom



85

Instrumental Music Office



KEY MAP



86

Choral Music Classroom



87

Vocal Music Office



88

Practice Room