

CAMPUS OBSERVATIONS

Classrooms & Pods

- Two (2) Kinder classrooms
- General classrooms grouped in pods of four that each surround a small breakout/collaboration space with computers and restrooms
- Classrooms have adequate space for staff and students, high ceilings, and good natural lighting
- Classrooms do not have doors, which hinders educational program; instruction interrupted when other classes move to and from breakout space in hall
- Classrooms have doors leading to outside; potential for outdoor learning
- Music and Science share a space; occur on alternate days
- Lack adequate Music spaces
- Special Education pull out functions

housed in portables

- No dedicated Art classroom

Library/ Media

- Does not support current needs
- Library is located in hallways, making travel to computer lab difficult if students are in hall searching for books
- Computer lab area is inefficient as well; screen not in a location/position where all students can view it –television installed in hallway so students there can view instruction taking place on screen

Food Service

- Very small space. Students cannot enter and select own food items; line up in little theater to access service window
- No shade structure over lunch tables; small trees provide minimal shade

Multi-Purpose Room

- There is a small theater area with stepped seating; not an MPR
- Not enough room for large gathering
- Open on one side, which has moveable partition; may still present acoustical concerns

Admin & Support Spaces

- Need for dedicated conference/meeting spaces for groups larger than 4-5 people (e.g., for IEP meetings)
- No staff workrooms; this is a big concern
- Teachers prep in their classrooms or adjacent learning “alcoves”

CAMPUS OVERVIEW

Greentree Elementary School is a K-6 seasonal school. The school is situated in a quiet residential setting, and the neighborhood in which the school resides has access to both the I-5 and the 261 toll road.

Classrooms are organized in groupings of four, in a pod configuration, surrounding a central breakout/collaboration area that is equipped with computers and restrooms. Classrooms do not have doors, and therefore little acoustical separation.

The Administrative area is set in from the street, at the front of the school, with the Multipurpose Room (MPR) and the Library directly adjacent. The MPR is equipped with a stage area that is level with the rest of the room and provides a degree of flexibility with its open layout. The MPR has direct access to the library, which is located opposite of the stage.

Greentree is a California Distinguished with strong academic programs in art, music and science taught by specialists in these fields. Additionally, Greentree supports other programs, such as Early Intervention Reading Model (ERIM), Gifted and Talented Education (GATE), and Drug Abuse Resistance Education (D.A.R.E.) to maximize each student’s educational experience.

Mission Statement: “To provide the highest quality educational experience which empowers all students with skills, knowledge, strategic thinking and values, in a positive, safe and challenging environment, fostered by a cooperative effort between school, parents, and community.”



Greentree Elementary School



4200 Manzanita | Irvine, CA 92604
Site Analysis

General Condition

- School grounds are visually pleasing overall
- HVAC issues; some pods/classrooms become extremely hot/cold and controls do not function adequately to fix problem

Building Systems

- Mechanical equipment was modernized in 2005 with new controls, water cooled chiller and 3 deck multi-zone air handler
- Individual AHU per wing of the building
- Site does not have photovoltaic panels

Technology

- Computer lab space does not support educational program needs
- Desire for dedicated computer lab space that is not in hallway
- Entire building set up for wireless; used

mainly by staff currently

- Desire to incorporate more handheld/wireless technology, with adequate bandwidth for whole school use

Non-traditional Space Uses

- Storage/equipment room being used as Psychologist’s office adjacent to Library

Vehicular Access/ Parking/ Drop-Off

- Currently, no designated drop-off area
- Parking lot extremely inadequate to support needs of school; very congested
- Labeled as staff parking, but parents use for pick-up/drop-off; safety issues with students walking through lot
- Desire for separate staff parking lot, and use of front parking as designated drop-off and pick-up area

Collaborative Spaces

- There are spaces for small groups to collaborate on the site

Wayfinding

- Parking lot is not located directly adjacent to the main entrance/ Administration; this can cause confusion for visitors to the school

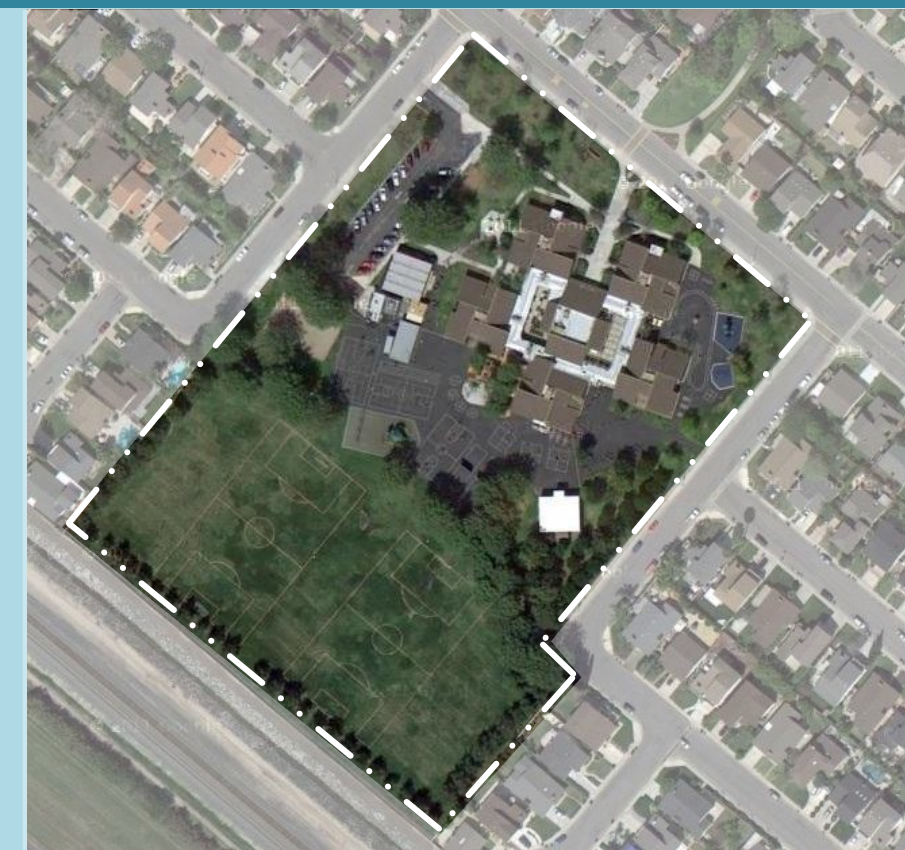
Safety & Security

- Back of campus has inadequate lighting at night; would benefit from motion sensor lighting

Child Care

- Located in a portable just beyond the hardcourts, at the back of the campus
- No separate drop-off

LPA



SCHOOL STATISTICS

Grades:	K-6
Building SF:	35,153
Portable SF:	4,792
2010/11 Enrollment:	491
Year Built:	1976
Modernization:	2005
Site Acreage:	9.6
# Portables:	4 + 2 CC

CLASSROOM COUNT

Kindergarten	2
1st & 2nd Grade	5.5
3rd & 4th Grade	4.5
5th & 6th Grade	4
Science (Shared Portable)	.5
Music (Shared Portable)	1.5
Not Used	3
Rtl, OT/PT (1 + 1 Portables)	2
Computer Lab	1
TOTAL	24

**OT/PT located in small portables*

MEASURES OF QUALITY -

MEASURES OF QUALITY -	+
Wayfinding/ Entry/ Welcome	○ ● ○ ○
Natural Daylighting	○ ○ ● ○
Controllability (Daylight, Lighting, HVAC)	○ ● ○ ○
Flexibility in Classrooms	○ ○ ● ○
Access to Technology	○ ○ ● ○
Collaboration	○ ● ○ ○
Student Display	○ ● ○ ○
MPR	○ ● ○ ○
Library/ Media	● ○ ○ ○
Functional Landscaping	○ ● ○ ○
Energy Consumption	○ ○ ● ○
General Condition	○ ● ○ ○



LEGEND

- Main Entry
- Secondary Entry
- Drop-Off
- Circulation
- Playfields/ Landscape
- Hardcourts
- Play Apparatus
- Parking
- Outer Courtyard
- Trees

UTILIZATION LEGEND

- Kindergarten Classroom
- Classroom
- Science/ Art Lab
- Specialty Classroom
- Special Ed Classroom
- Portable (Color based on Program)
- Child Care (Portable)
- Other Spaces
- Kindergarten
- Grade Level
- Science
- Music
- Commons
- Response to Intervention
- Administration
- Computer Lab
- Occupational Therapy/ Physical Therapy
- Unused Classroom

N
SCALE 1:60



Front Entrance



Main Office



Path toward Library



Parking Lot



Service Access



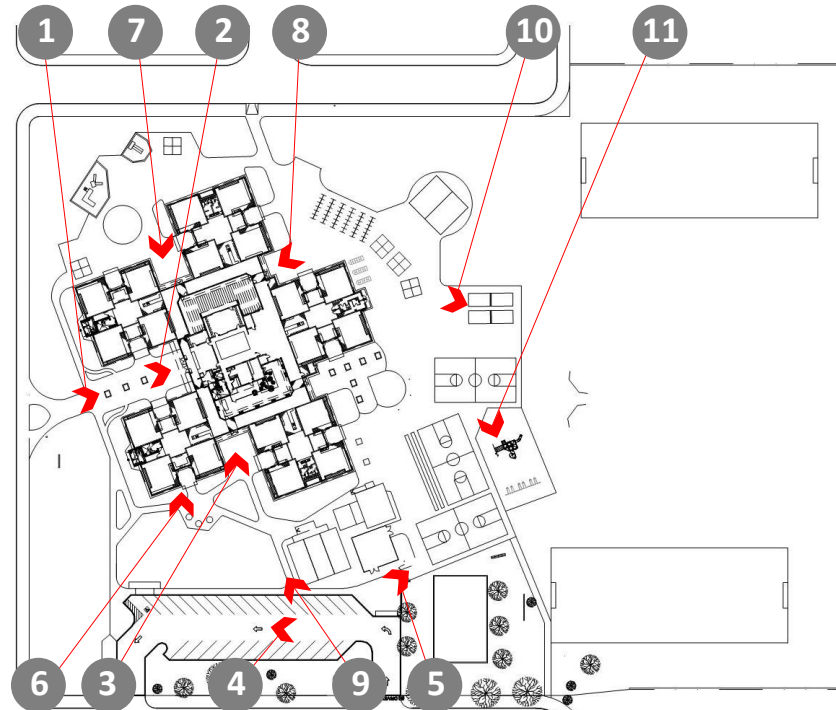
Front of School



Entrance near Kindergarten Play Structure



Entrance to Classroom Pod



KEY MAP



Walkway from Parking Lot to Main Entrance



Hardcourts and Playfields



Play yard showing Apparatus and Fields



12

Playfields



13

Kindergarten Play Apparatus



14

Lunch Tables



15

Food Service Entry



16

Mechanical Equipment Enclosure



17

Portable (G1)



18

Childcare Portables



19

Main Office & Waiting Area



KEY MAP



20

Hallway from Main Office to Pod



21

Conference Room



22

Health Office



Staff Workroom



Staff Lounge



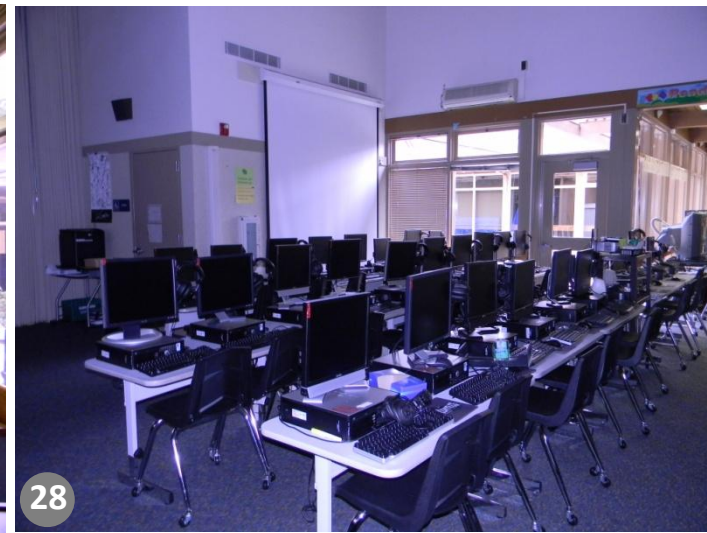
Staff Patio outside Lounge



Speech Room (G4)



Library



Computer Lab



Casework in Main Hallway



Little Theatre



KEY MAP



Indoor/Outdoor Connection from Theatre



Typical Kindergarten Classroom



Typical Classroom



Science Classroom



Kindergarten Storage Room between two Classrooms



Typical Student Collaborative Area between Classrooms



Breakout Collaboration in Hallway



Typical Bathroom



Food Service



Special Education Classroom



Childcare Portable



KEY MAP



Guidance (G3)



OT/PT Classroom (G2)



Music Room