

CAMPUS OBSERVATIONS

Administrative Area

- Main entry directly adjacent to MPR entrances; confusing and small administrative lobby
- Health office, principal's office, teacher's lounge, and staff workroom are inadequately sized
- Teachers do not have alternate workrooms for prep needs; pods currently house book storage rather than work/prep rooms

Classrooms

- 2 Kinder rooms, (1) appears small; lacks dedicated restrooms. Need for additional Kinder and/or Activity Center
- Classrooms connected to small collaboration/breakout spaces that also function as the entry to the pod/wing from Library

- Classroom groupings could be better organized
- Lack adequate number of classrooms, therefore some grades in Portables
- Classrooms are somewhat cramped, due to increased class size; some classes taught in portables
- Science does not have designated room, currently uses MPR stage
- Lack Music classrooms, currently share space with Science at MPR stage
- Special Ed/ SAI housed in portables, not integrated with other classrooms
- More space needed for Special Ed/Rtl; currently use teacher's lounge, MPR, conference room, outdoor tables
- Classrooms have 3 computers for students; could use more laptops for student use

MPR

- Inadequate in size
- Central location, adjacent to Admin
- Stage in constant use, often not available for performances; stage is small in size, can be closed off and used as classroom
- Adjacency to Library may result in acoustic issues

Library/ Media

- Centrally located but cannot access directly from Admin; accessible through MPR, from outside, or from classroom wings
- Scheduling problems due to sharing space for library and media; acoustic issues as well
- Computer lab is small

Food Service

- Is inadequately-sized, gets congested
- Queue has one (1) entry/ exit

CAMPUS OVERVIEW

Eastshore Elementary School is a K-6, seasonal school that is situated directly adjacent to Firwood Park and in close proximity of North Lake in a quiet residential setting. The neighborhood lies between the I-5 and the I-405.

Each academic wing is organized in a pod configuration with the main entrance to the pod being a collaborative wet area. The wet area is equipped with a sink, cabinetry, and Smartboard for collaborative learning. With exception to the Kindergarten classrooms, each pod feeds directly into the media center.

Main Administration and the Multipurpose Room (MPR) are located at the front of the school nearest the parking lot. The MPR can be accessed from the front of the school, from the Media Center, and near the Kindergarten area. The stage functions as a performance space, as well as a music classroom and a science classroom.

The strong academic program includes music and science taught by specialists in these fields. Additionally, an emphasis is placed on the GATE program (Gifted and Talented Education), as well as programs such as the Quicksience team and Kids Helping Kids. Another unique feature to Eastshore Elementary is its Dolphin Club Child Care with the purpose of "nurturing, supporting, promoting and enhancing all areas of a child's development."

Mission Statement: As a committed learning community, Eastshore Elementary School ensures growth and learning in all students.



Eastshore Elementary School



155 Eastshore | Irvine, CA 92604
Site Analysis

Building Systems

- Modernization was done in 2005 with new water source heat pumps per classroom installed
- School does not have photovoltaic panels

Non-Traditional Space Uses

- Former OT office converted to conference room to support IEP meetings, staff collaboration
- Music uses CC portable for vocal music
- Stage used for science and music classes

Vehicular Access/ Parking/ Drop-Off

- No separate drop-off for child care
- Parking lot is small; potential for congestion and may not accommodate all staff/ visitors

Child Care

- Located on the perimeter in two portables

Outdoor Spaces

- Playground very small
- Lacks Kinder play area
- Outdoor learning opportunities include concrete walkways, cement areas accessible from classrooms; not a lot of shaded areas
- School juts directly up against neighborhood housing, no fence separation

LPA



SCHOOL STATISTICS

Grades:	K-6
Building SF:	25,650
Portable SF:	7,680
2010/11 Enrollment:	561
Existing Capacity:	633
Year Built:	1980
Modernization:	2005
Site Acreage:	6.0
# Portables:	6 + 2CC

CLASSROOM COUNT

Kindergarten	2
1 st & 2 nd Grade (4 + 1 Portable)	5
3 rd & 4 th Grade (4 + 1 Portable)	5
5 th & 6 th Grade (4 + 2 Portables)	6
Science (Stage)	.5
Music (Stage)	.5
RSP/SAI (1 + 2 Portables)	3
Computer Lab	1
TOTAL	23

**Portables for 4th and 5th are APAAS classes*

MEASURES OF QUALITY -

Measure	+
Wayfinding/ Entry/ Welcome	○ ● ○ ○
Natural Daylighting	○ ● ○ ○
Controllability (Daylight, Lighting, HVAC)	○ ● ○ ○
Flexibility in Classrooms	○ ● ○ ○
Access to Technology	○ ○ ● ○
Collaboration	○ ● ○ ○
Student Display	○ ● ○ ○
MPR	○ ● ○ ○
Library/ Media	○ ● ○ ○
Functional Landscaping	○ ● ○ ○
Energy Consumption	○ ○ ● ○
General Condition	○ ○ ● ○



LEGEND

- ←★ Main Entry
- Secondary Entry
- Drop-Off
- Circulation
- Playfields/ Landscape
- Hardcourts
- Play Apparatus
- Parking
- Trees

UTILIZATION LEGEND

- Kindergarten Classroom
- Classroom
- Science/ Art Lab
- Specialty Classroom
- Special Ed Classroom
- △ Portable (Color based on Program)
- CC Child Care (Portable)
- Other Spaces
- K Kindergarten
- # Grade Level
- S Science
- A Art
- M Music
- RSP Special Ed/Resource
- SAI Supplemental Academic Instruction
- Comp. Computer Lab
- Admin. Administration
- Open Unused Classroom



Front of School



Main Entrance



MPR Entrance



Parking and Drop-off



Portables



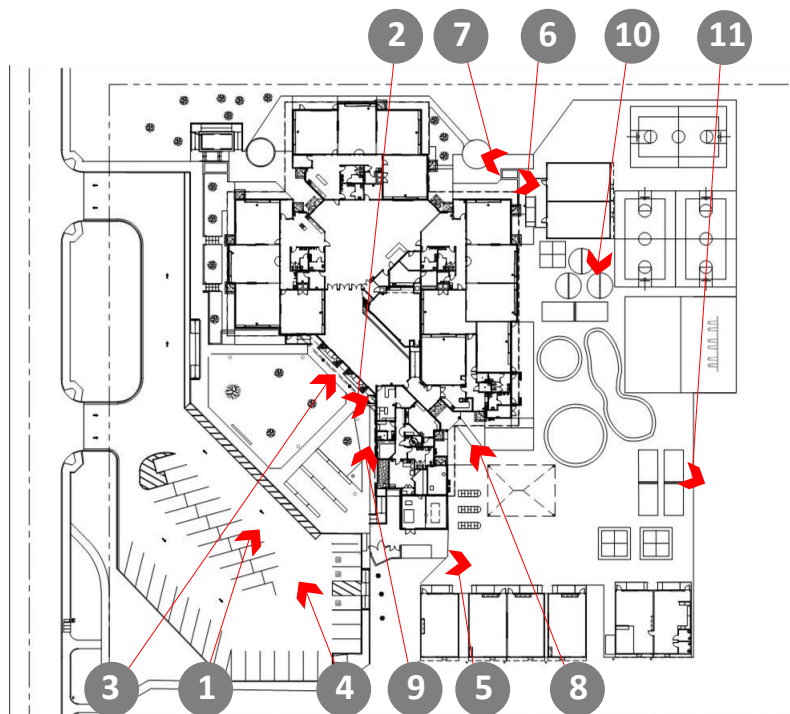
SAI portables



Small courtyard adjacent to classroom 8



Access to Food Service



KEY MAP



Exterior Mural



Hard court



Play field near Childcare Portables



Play Apparatus near Hardcourts



Dolphin Plant Sculpture near Admin



Lunch Shelter



Instrument Storage



Bike Racks



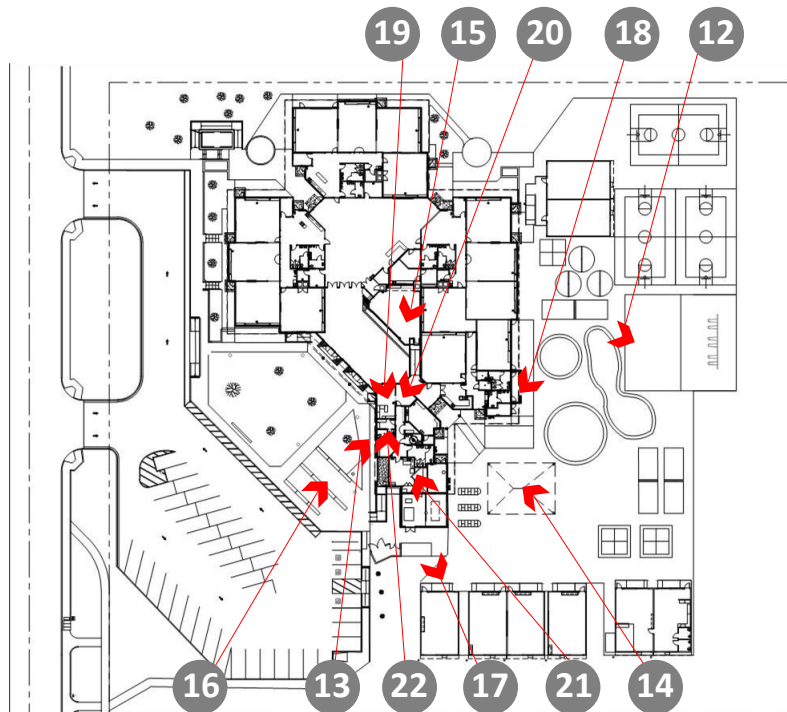
Portable P1



Covered Walkway between two Classrooms



Main Office



KEY MAP



Principal Office



Conference Room



Health Office



Staff Workroom



Staff Lounge



Psychologist's Office



Storage Room



Library



Book Room



Small Kitchen by Classroom 5



MPR Stage



KEY MAP



MPR Entrance



Typical Kindergarten Classroom



Typical Classroom



34

Food Service



35

Media Center



36

Typical Childcare Classroom



37

Typical Bathroom



38

Speech Room



39

OT Room



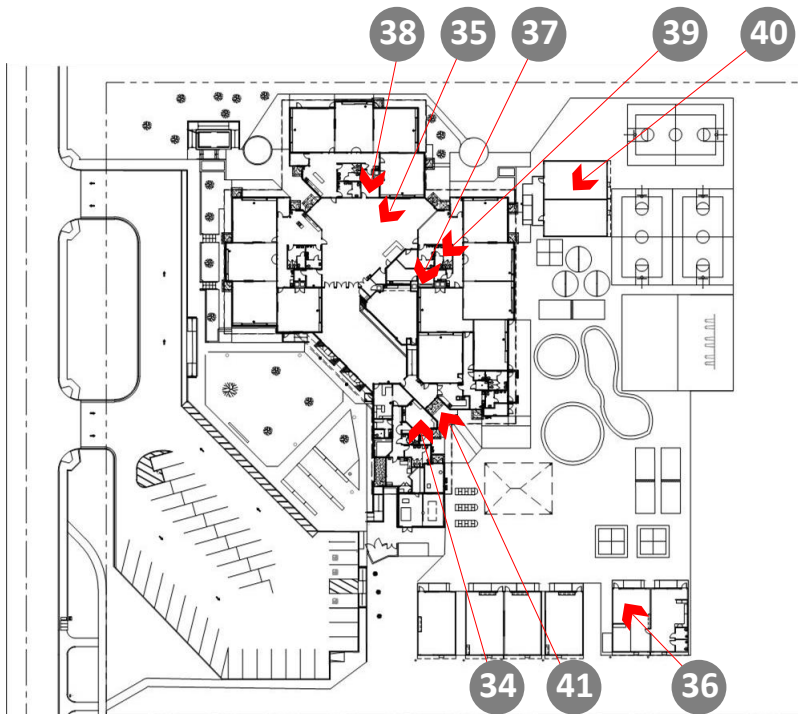
40

Typical Portable Interior P7



41

Food Service Window



KEY MAP

