

## CAMPUS OBSERVATIONS

### Classrooms

- Two (2) Kinder classrooms, each with 'wet' area and dedicated toilet
- All classrooms have casework with sink and small area of VCT flooring
- Good natural lighting from large windows; new classroom building has light shelves
- Whiteboards on one wall of classroom; prescribed location of teacher desk
- Music located in MPR space
- Music and Science share 'stage area,' which can be closed off from MPR
- No dedicated Art classrooms
- Aside from two designated student workrooms in center of classroom pods; may not be enough spaces for small group work or RTI pullout
- APAAS taking place in three classrooms

### Library/ Media

- Centrally located in main classroom building; abundance of natural light from large skylight
- Circulation desk not at proper height for standing librarian
- Need for more shelving
- Need for overhead projection in Library area to support library training sessions; currently, difficulty in scheduling heavily used media center projectors
- Need area for video storage
- Low partition between library and media areas; multiple functions in that space may cause distractions and acoustical interruptions

### Food Service

- Very small; students queue in MPR, at service window, rather than walking into facility to make selections (preferred)
- Lunch shelter provides shade; not rain cover

### Administration

- Small, separate building
- Staff workroom and lounge are very small and cannot support all staff; satellite workrooms are located within the classroom pods

### Multi-Purpose Room

- Large space with good daylighting
- Stage is not a raised platform
- Stage can be used as classroom (moveable partition)
- MPR cannot open to any indoor or outdoor spaces to expand the seating area if needed
- Chorus practice occurs twice per week at CDC (Childcare) facility

## CAMPUS OVERVIEW

Deerfield Elementary School is a K-6, seasonal, neighborhood school located directly adjacent to Venado Middle School and also Deerfield Community Park. The school is situated in a quiet residential setting north of the Yale Loop, not far from the I-5 and 261 toll road.

Administration – which includes the main reception area, the health office, the principal's office, and the staff lounge and workroom – is located in a separate, small building directly adjacent to the parking lot.

The MPR is located at the front of the main classroom building beyond a small reception area. It includes a stage area (level with the rest of the room) that can be partitioned off to be used as a separate classroom. Beyond the MPR is the Library/Media Center, acting as a centralized student hub. The academic classrooms are clustered on the sides of the hub, organized into two pods of 6-7 rooms that surround one shared workroom. In addition, there is a separate classroom building housing seven additional classrooms.

Deerfield Elementary School is a California Distinguished School and a National Blue Ribbon School. The vision of the school is to foster success by accommodating the individual learning styles and academic needs of the very diverse student population. In addition to its traditional academic program, the school has a very strong fine arts program, with highly-trained specialists teaching classes in music and art.

Mission Statement: "Deerfield students will attain high levels of achievement within a safe school environment that is staffed by highly-qualified individuals."



# Deerfield Elementary School



2 Deerfield | Irvine, CA 92604  
Site Analysis

### General Condition & Aesthetic

- Campus is in great condition and visually pleasing after modernization; will be source of pride for school community

### Building Systems

- Building modernized this year; FHP water source heat pumps, BAC cooling tower and new packaged VRV system are controlled by an Andover EMS

### Vehicular Access/ Parking/ Drop-Off

- Parking lot is somewhat small
- Adjacency to Venado Middle School creates a lot of congestion during drop-off and pick-up

### Technology

- 40 computers in Media Center; plans to add another 40 to make full use of space
- School-wide need for tech instruction and IOLA (web-based) testing is not adequately supported currently

### Outdoor Areas

- Walkways and entrances to second classroom building are covered to provide shade and rain shelter
- Having access to two separate fields would be preferable to one field
- Compared to El Camino, would like to ensure that new Deerfield has dodge ball courts, additional four-square courts, and an additional handball court (vs. what currently exists at El Camino)

### Safety & Security

- Concern related to being able to monitor visitors on site due to location of Administration in separate building; additional reception area exists at front of MPR Main Building to potentially ameliorate some of this concern

### Child Care

- Lack of separate drop-off

LPA





### SCHOOL STATISTICS

Grades:	K-6
Building SF:	34,813
Portable SF:	1,920
2010/11 Enrollment:	570
Year Built:	1977
Modernization:	2011
Site Acreage:	9.0
# Portables:	0 CC

### CLASSROOM COUNT

Kindergarten	3
1 <sup>st</sup> & 2 <sup>nd</sup> Grade	4
3 <sup>rd</sup> & 4 <sup>th</sup> Grade	5
5 <sup>th</sup> & 6 <sup>th</sup> Grade	8
Science	1
Music*	1
RSP/RTI	2
Computer Lab	1
<b>TOTAL</b>	<b>25</b>

\*Music classes also take place in MPR, not included in classroom count  
 \*\*Additional 12 pullout spaces

### MEASURES OF QUALITY - +

Wayfinding/ Entry/ Welcome	○ ○ ● ○
Natural Daylighting	○ ○ ○ ●
Controllability (Daylight, Lighting, HVAC)	○ ○ ● ○
Flexibility in Classrooms	○ ○ ● ○
Access to Technology	○ ● ○ ○
Collaboration	○ ● ○ ○
Student Display	○ ○ ○ ○
MPR	○ ● ○ ○
Library/ Media	○ ○ ● ○
Functional Landscaping	○ ● ○ ○
Energy Consumption	○ ○ ○ ●
General Condition	○ ○ ○ ●

N  
 SCALE 1:60

### LEGEND

- ←★ Main Entry
- Secondary Entry
- Drop-Off
- Circulation
- Playfields/ Landscape
- Hardcourts
- Play Apparatus
- Parking
- Trees

### UTILIZATION LEGEND

- Kindergarten Classroom
- Classroom
- Science/ Art Lab
- Specialty Classroom
- Special Ed Classroom
- △ Portable (Color based on Program)
- Child Care (Portable)
- Other Space
- K Kindergarten
- # Grade Level
- S Science
- M Music
- OT Occupational Therapy
- SE Special Education
- RTI Response to Intervention
- RSP Resource
- SDC Special Day Class
- Admin. Administration
- Comp. Computer Lab
- Wkrm Student Workroom



1

Front View of School



2

Administrative Building



3

Parking & Drop-Off



4

Bike Racks



5

Walkway from Admin to Main Building



6

View of Main Building Classroom Façades



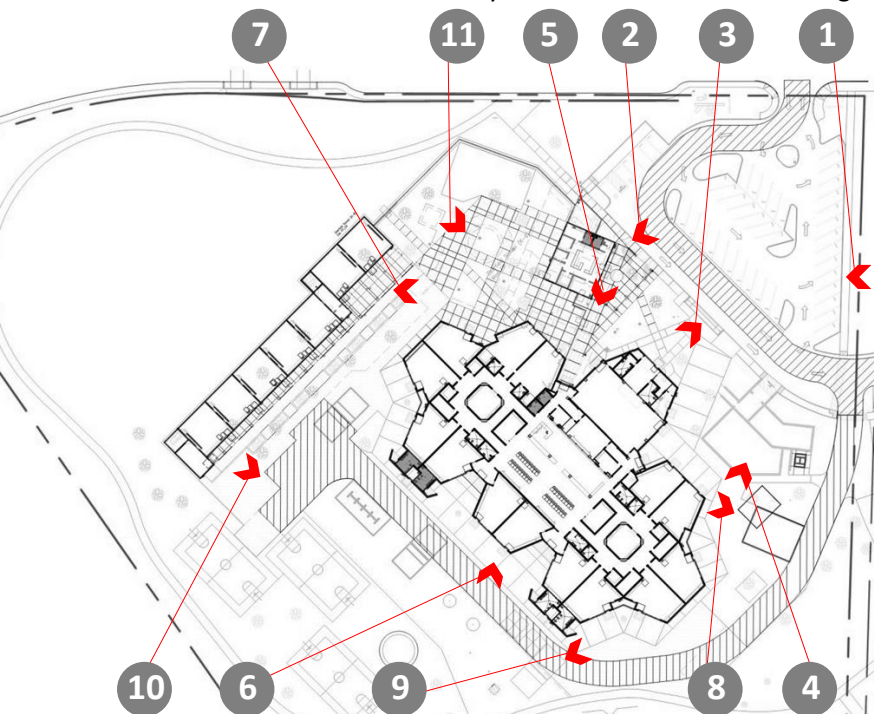
7

New Classroom Building



8

Lunch Shelter



KEY MAP



9

Play Apparatuses



10

Future Hardcourt Area



11

View of Admin Building & Main Building from back





Administrative Building, Main Office



Staff Workroom



Staff Lounge



Conference Room



Health Office



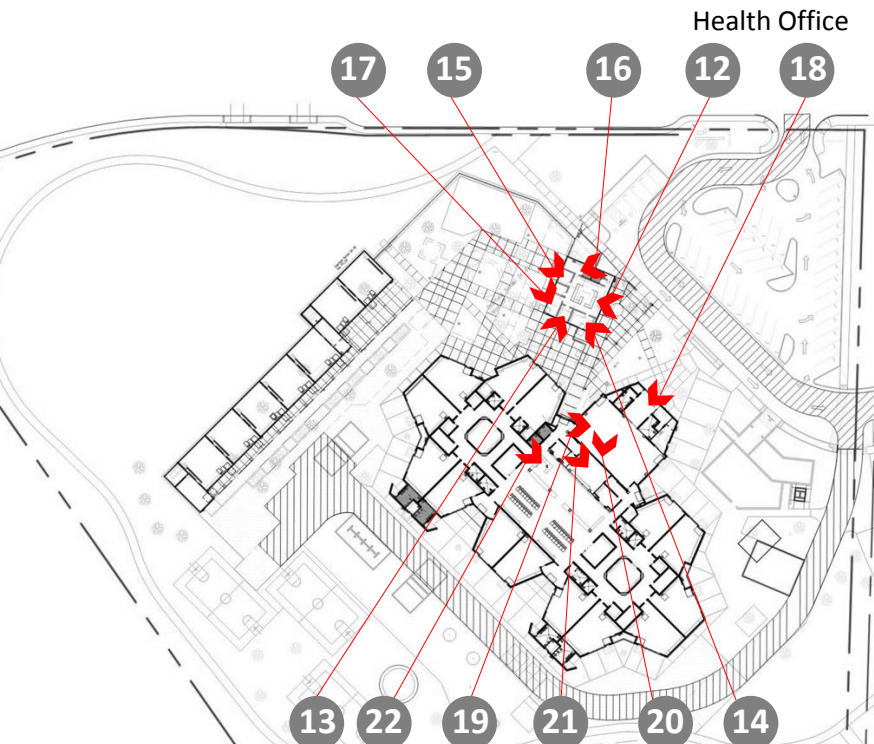
Principal's Office



Reception Area near MPR in Main Building



MPR



KEY MAP



MPR Stage Area with Moveable Partition



Music/Science Classroom (MPR "Stage" Area)



Library



23

Media Center



24

RTI Reading



25

Resource Center



26

Workroom



27

Typical Classroom



28

Typical Classroom Sink & Casework



29

Kindergarten Classroom



30

Kindergarten Wet Area



KEY MAP



31

Storage Area



32

Food Service



33

Typical Unisex Bathroom

