

CAMPUS OBSERVATIONS

Classrooms

- Three (3) Kinder CR (One AM/PM + K/1 Combo + One K/SAI) share one restroom facility. Lack dedicated Kinder restrooms
- Acoustical separation is a problem due to open classrooms (no doors)
- Hallways used for computer breakout activities
- Large windows in classrooms lining interior courtyard allow a lot of natural light in; sliding glass door on perimeter classrooms provide some, but less daylight in these classrooms
- All rooms less flexible due to increased enrollment; portables with large 6th grade classes are especially tight
- Markerboard on one wall only; limits flexibility
- Hallways used to support collaboration and computer use

- One (1) dedicated Music classroom and one (1) Music in portable
- One (1) dedicated Science in portable
- Special Ed classrooms integrated in main building and in portables
- RTI program is limited, but able to use classroom space

Library/ Media

- Adjacent to Administration, accessible through central hallway
- Supports current needs; inviting space with natural light from windows

Food Service

- In permanent portables near back of campus; adequately sized, two (2) entry/exits
- Queuing area is mostly outside, with small amount of rain coverage from overhang; coverage not sufficient to accommodate long lines

- Lunch shelters provide shade but not protection from rain

Multi-Purpose Room

- Need to update speakers inside/outside
- MPR stage can open to outdoor amphitheatre/outdoor stage in central courtyard
- Cannot expand room to create more indoor seating space
- Stage too small to be used as classroom

Admin & Support Spaces

- Admin is directly adjacent to Library; lacks acoustical barrier
- Health office and restroom is small
- Teachers do most prep work in classrooms; workrooms small with limited table space, largely used for storage
- Lack areas for staff collaboration aside from staff lounge

CAMPUS OVERVIEW

Culverdale Elementary School is a K-6 seasonal school. The school is situated directly next to San Leandro Park, in a quiet residential setting just north of the I-405.

The main building has high ceilings and forms a long semi-circle surrounding a tree-shaded interior courtyard with outdoor amphitheatre, grass areas, and tables and seatwalls for outdoor gathering. Classrooms, which do not have doors, line both sides of the long hallway that extends the length of the school. Tables with computers run along the walls of the hallways, providing access to technology and space for small group collaboration near the classrooms.

The Administrative area is located at one end of the long building, with the Library directly next to it, followed by the computer lab and the long hallway of classrooms. The Multipurpose Room (MPR) is located in an acoustically separate portion of the building, at the front of the campus, adjacent to the parking lot. The small MPR stage can open up to an outdoor stage/amphitheatre, which enables the school to utilize the outdoor central courtyard for large assemblies when desired.

Culverdale is a California Distinguished School, providing a strong academic program that emphasizes individual students' needs and achievement. Through the Koala Pride program, staff encourages students to be respectful, responsible, and ready to learn. Students are recognized on a weekly basis for exhibiting these values at school.

Mission Statement: to enable all Culverdale ES students to become respectful, responsible, self-reliant problem solvers who can assume a productive role in a diverse world.



Culverdale Elementary School



2 Paseo Westpark | Irvine, CA 92614
Site Analysis

General Condition & Aesthetics

- Main building has high, pitched ceilings throughout, creating large, open spaces; height of spaces creates acoustical issues
- Desire for building to stand out more and be more visually interesting/pleasing, to elicit sense of pride from community
- Interior courtyard/quad is viewed, to the community, as a place where celebrations and activities take place

Building Systems

- Mechanical equipment modernized in 2005 with new chiller, boiler, triple deck air handler integrated on an Andover EMS
- Site does not have photovoltaic panels

Technology

- Technology is reported to be adequate in Computer lab; 36 computer stations
- Computers also in the hallways

- Wireless exists throughout campus and student work areas but not in classrooms; weak signal in certain areas
- Considering tablets and laptops; need more wireless bandwidth in future to support use of portable devices
- Portables lack computer access; 3 computers each

Outdoor Spaces & Learning Areas

- Grounds are visually pleasing and well-maintained
- Interior courtyard has abundance of shade in the center from trees, but table areas could use more shade
- Picnic tables in some areas, but require more shade

Wayfinding

- Parking lot is not directly adjacent to main entrance; signage directs visitors

- Navigating main building is fairly easy; one main hallway connects all of the classrooms

Safety

- Areas surrounding portables may be difficult to supervise

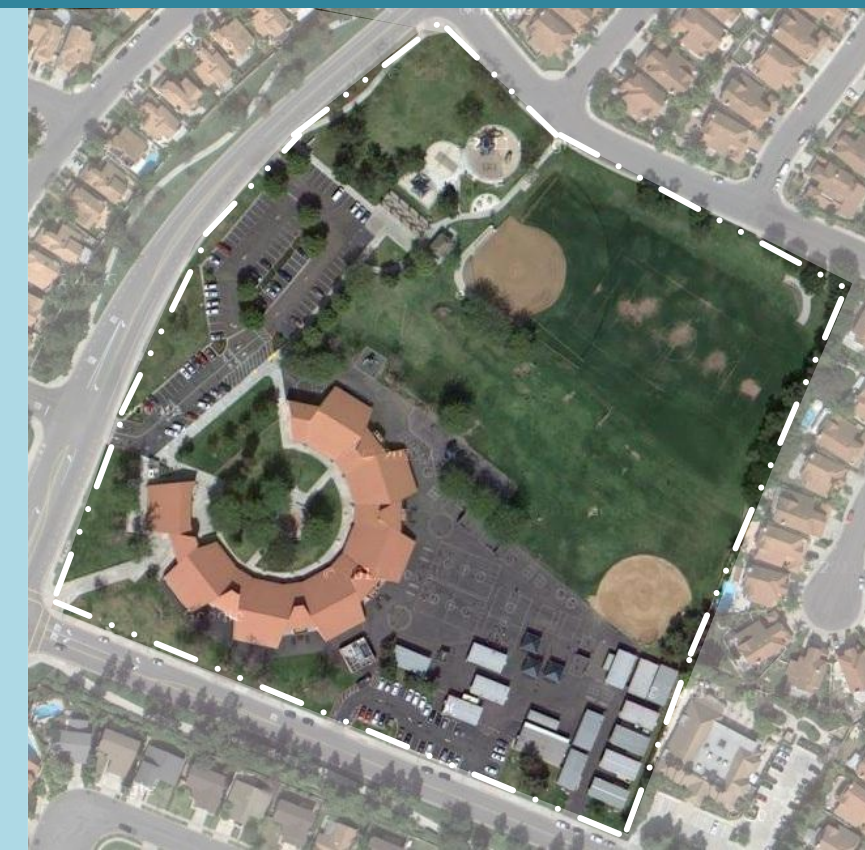
Vehicular Access/ Parking/ Drop-Off

- Student pick-up is extremely congested
- Main parking area shared with public park; 2nd parking lot near portables

Child Care

- Located in portables toward the back of campus, with other classroom portables; lacks nearby drop-off

LPA





SCHOOL STATISTICS

Grades:	K-6
Building SF:	34,313
Portable SF:	14,880
2010/11 Enrollment:	630
Year Built:	1976
Modernization:	2003
Site Acreage:	10.3
# Portables:	13 + 2CC

CLASSROOM COUNT

Kindergarten	1.5
1 st & 2 nd Grade	6.5
3 rd & 4 th Grade (3.5 + 1 Portable)	4.5
5 th & 6 th Grade (2.5 + 3 Portables)	5.5
Science (1 Portable)	1
Music (1+ 1 Portable)	2
RSP/RtI/SAI (6 + 2 Portables)	8
Title 1	1
ELD (3 Portables)	3
Computer Lab	1
TOTAL	34

MEASURES OF QUALITY -

MEASURES OF QUALITY -	+
Wayfinding/ Entry/ Welcome	○ ○ ● ○
Natural Daylighting	○ ○ ● ○
Controllability (Daylight, Lighting, HVAC)	○ ● ○ ○
Flexibility in Classrooms	○ ● ○ ○
Access to Technology	○ ● ○ ○
Collaboration	○ ● ○ ○
Student Display	○ ● ○ ○
MPR	○ ● ○ ○
Library/ Media	○ ○ ● ○
Functional Landscaping	○ ● ○ ○
Energy Consumption	○ ○ ● ○
General Condition	○ ○ ● ○

LEGEND

- Main Entry
- Secondary Entry
- Drop-Off
- Circulation
- Playfields/ Landscape
- Hardcourts
- Play Apparatus
- Parking
- Trees

UTILIZATION LEGEND

- Kindergarten Classroom
 - Classroom
 - Science/ Art Lab
 - Specialty Classroom
 - Special Ed Classroom
 - Portable (Color based on Program)
 - Child Care (Portable)
 - Other Spaces
- | | |
|--------|----------------------------------|
| K | Kindergarten |
| # | Grade Level |
| S | Science |
| A | Art |
| M | Music |
| ELD | English Language Development |
| RSP | Special Ed/Resource |
| RtI | Response to Intervention |
| SAI | Specialized Academic Instruction |
| Admin. | Administration |
| Comp. | Computer Lab |





1 Front of School on Paseo Westpark



2 Signage on southern side of site (on San Leandro)



3 Entrance to Front Office



4 Parking and Drop-off



5 Bike Racks



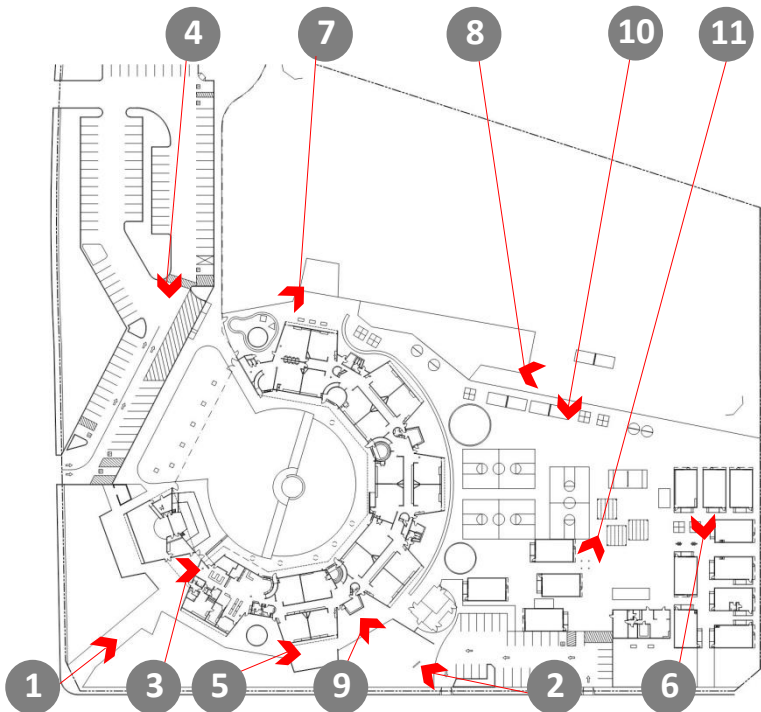
6 View of Portables (P1-P6)



7 Kindergarten Play Structure



8 Play Structure, Swings, and Playfields



KEY MAP



9 Outdoor Seating near Classrooms



10 Hardcourts



11 Lunch Shelters





Service Entry



Additional Parking near Portables



Food Service Portable Entry



Interior Courtyard



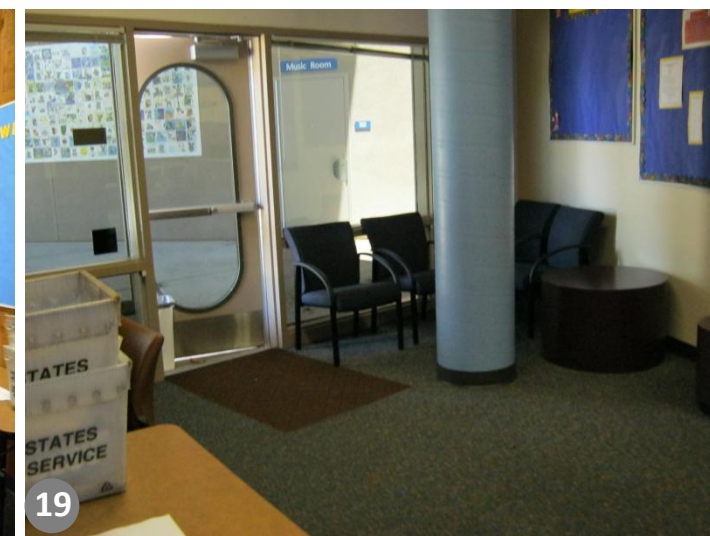
Outdoor Amphitheatre in Courtyard



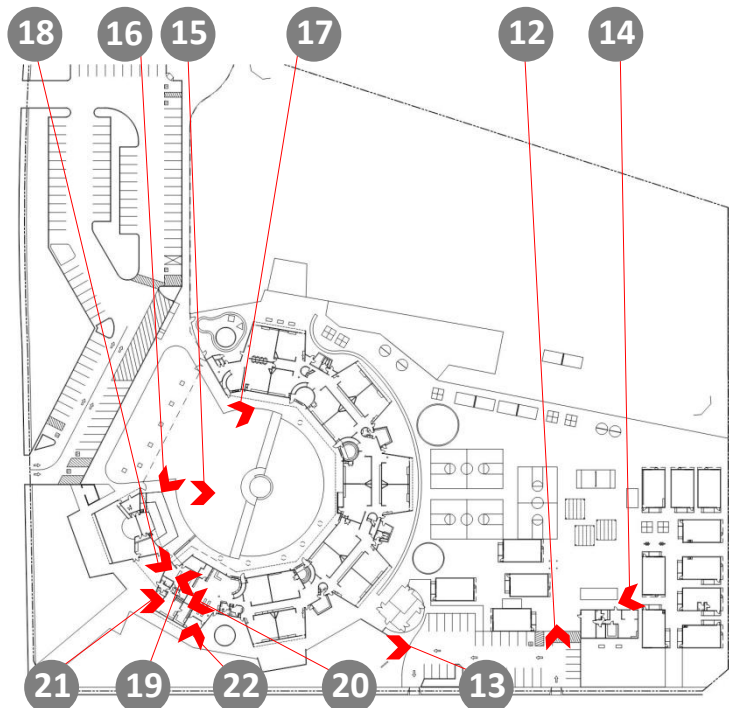
Shaded Areas from overhangs in Courtyard



Main Office



Waiting Area



KEY MAP



Staff Workroom



Staff Lounge



Conference Room



23

Health Office



24

Library



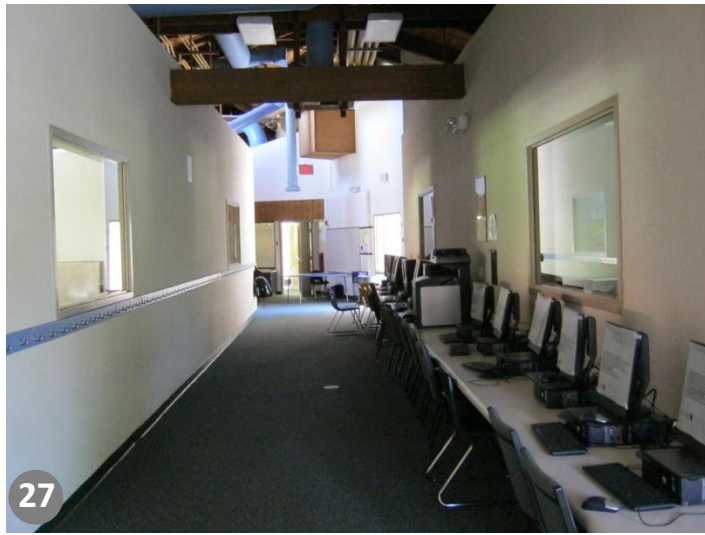
25

Computer Lab



26

Typical Classroom



27

Typical Hallway with Computer Stations



28

Kindergarten Classroom



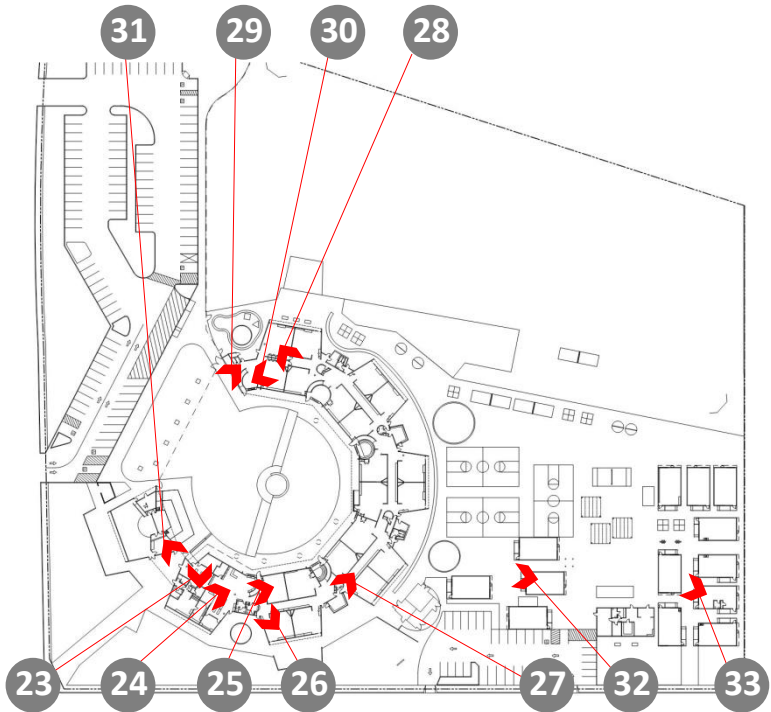
29

Kinder Bathroom



30

Resource Area near Kinder/1st classrooms



KEY MAP



31

Music Classroom



32

Typical Portable (P-12)



33

Koala Kare Portable



Teacher Workroom



Circular Specialty Space (Speech Office)



MPR Stage



MPR



Food Service



Resource Center



Psychologist Office adjacent to Library



Typical Bathroom



KEY MAP

