

## CAMPUS OBSERVATIONS

### Classrooms

- The classroom buildings are one-story and layout to form a courtyard. Creates a pleasant setting.
- All classrooms are accessible from exterior walkways.
- Classrooms can access outdoor areas, there are small lawn areas for outdoor activities.
- The Science labs require additional casework to function better for science lab setting
- There is a desire to improve the Arts labs for Career Technical (CTE) programs.

### Library/ Media

- There is a desire to have a student commons / "Innovation Lab" area.

### Food Service

- There is a need for a small food service facility; the current space is inadequate and is not equipped as a warming kitchen.

### Multi-purpose Room

- The existing MPR is too small to assemble the whole school.
- There is a need for a larger MPR to be used for performing arts, assembly functions as well as physical education activities.

### Admin & Support Spaces

- Administration functions well.
- Consideration should be given to expanding the administration space needs as the school grows with the District anticipated enrollment growth.

### Physical Education

- There is a need to improve indoor and outdoor Physical Education opportunities.
- There is a need for a small locker/changing room and multipurpose room to support P.E. functions.



## CAMPUS OVERVIEW

Creekside High School (CHS) is the alternative education high school for the Irvine Unified School District and draws its 9th-12th grade students from throughout IUSD's other high schools. The school relocated in September 2007 to our new site at the corner of Barranca Parkway and Harvard Street.

Creekside High School, the second oldest high school in Irvine Unified, was established in the summer of 1974 as the Alternative High School in the Irvine Unified School District. It was the result of the efforts of a group of students, parents, teachers and administrators who challenged the assumption that the comprehensive high school is an appropriate learning environment for all students.

Creekside's graduation requirements are the same as the other high schools in the district. Additionally, Creekside participates in a process of ongoing self-study and program improvement and has received the maximum six-year term of accreditation from the Accrediting Commission of Schools for the Western Association of Schools and Colleges.

**Mission Statement:** "to prepare students academically, socially, and emotionally to be responsible, contributing members of a diverse, rapidly changing, and increasingly interdependent and interrelated global community."

# Creekside Education Center



3387 Barranca Parkway | Irvine, CA 92606  
Site Analysis

LPA

### General Condition & Aesthetics

- Campus layout is centered around a main courtyard and is used often for large assemblies.
- A landscaped edge is needed to buffer school along the access road coming off Barranca.
- This is a relative new school, built in 2007, however there are some areas that require repair due to settlement of the ground at the doorways along the building perimeter.
- Overall the campus has a nice layout and is a pleasant environment.

### Building Systems

- All buildings are served by Bard packaged heat pumps controlled by "school stats" that run on occupant override and shut off on a programmed schedule. No EMS.

- Site does not have photovoltaic panels

### Technology

- Computer labs are heavily used for CTE media arts programs.
- Wireless access is provided throughout the school grounds.
- Desire for interactive boards in classrooms and Media Center.

### Outdoor Spaces, Fields, Landscaping

- Adjacency of park has restricted use.
- In need of additional physical education fields and indoor fitness room.
- Student use of hardcourts during break and lunch. Site prefers central location for ease of use and visibility during these periods.

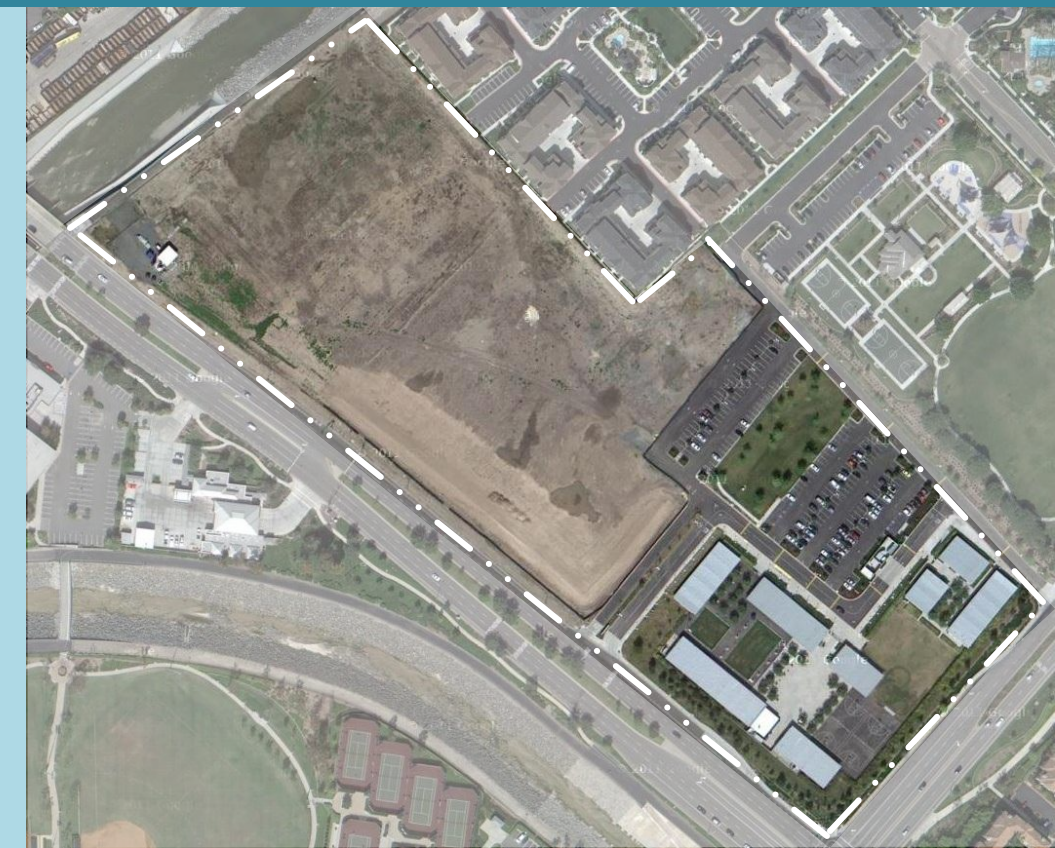
- Outdoor quad area would benefit from more shade and seating and increase functionality of this space.

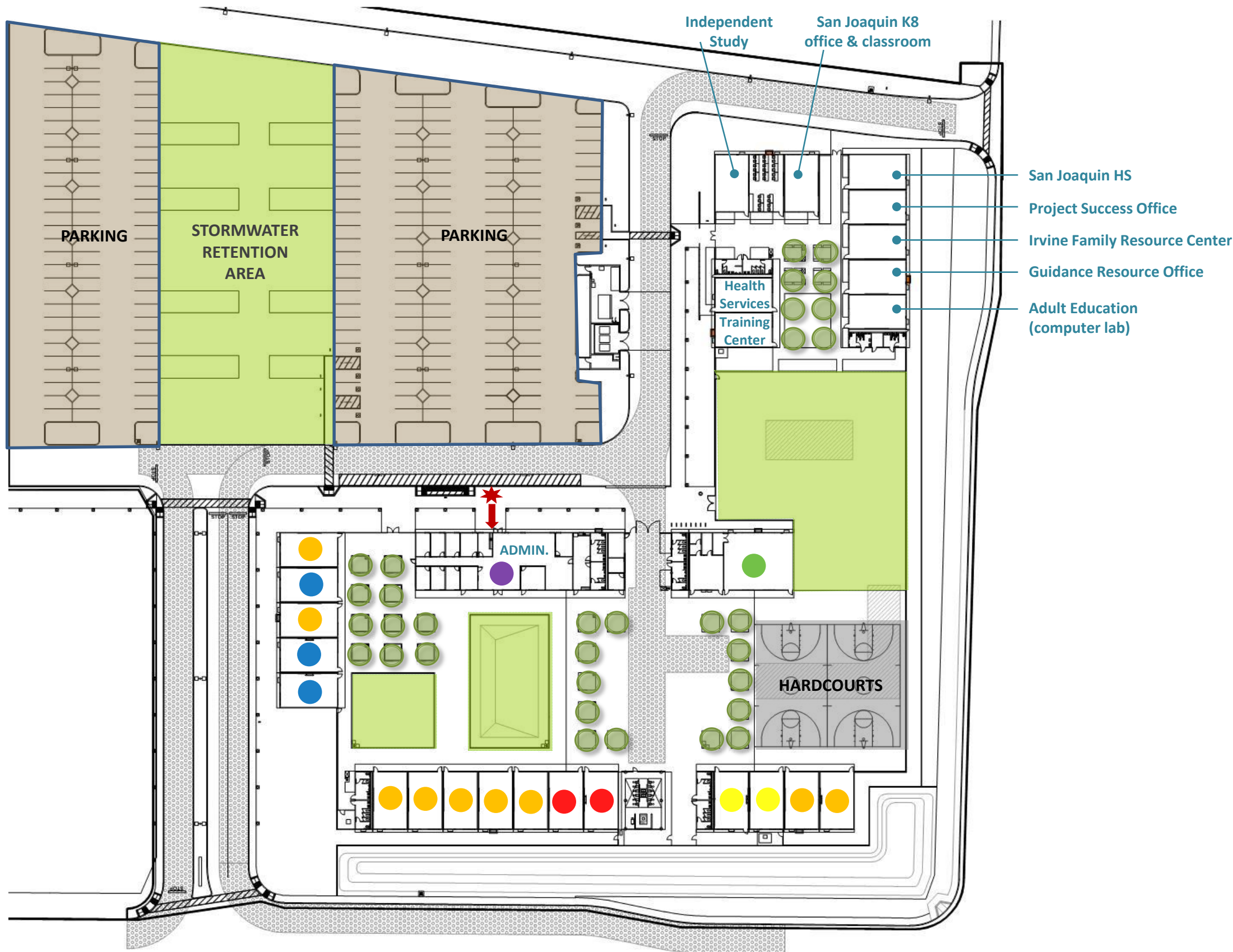
### Wayfinding

- Main office is clearly identified.

### Vehicular Access/ Parking/ Drop-off

- Parking lot and drop-off functions well.
- There is adequate number of parking stalls.





### SCHOOL STATISTICS

Grades:	9-12
Building SF:	37,820
2010/11 Enrollment:	181
Year Built:	2007
Modernization:	2032
Site Acreage:	8.55

### CLASSROOM COUNT

Computer Lab	3
Science Lab	2
Art Room	2
General Classrooms	11
<b>TOTAL</b>	<b>16</b>

### LEGEND

- Main Entry
- Secondary Entry
- Drop-Off
- Playfields/Landscape
- Hardcourts
- Parking
- Trees

### UTILIZATION LEGEND

- Classroom
- Science
- Computer Lab
- Physical Education/MPR
- Arts
- Administration



1 Main Entrance



2 Secondary Entry



3 Drop-Off



4 Interior Courtyard



5 Courtyard near Guidance Resources



6 Food Service



7 Main Office



8 Office Waiting Area



9 Director's Office



10 Faculty Lounge



11 Faculty Workroom



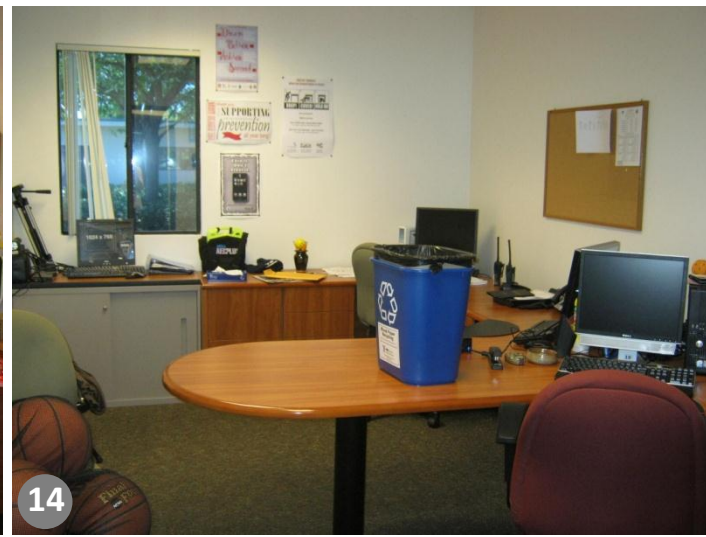
12 Psychologist Office





13

Counselor Office



14

Security Office



15

Typical Classroom



16

Typical Computer Lab



17

Typical Science Lab



18

Ceramics Yard



19

Art Classroom



20

MPR



21

Food Service



22

Independent Study Portable



23

San Joaquin High School Portable



24

Project Success Portable





25

Irvine Family Resource Center



26

Training Center



27

Health Office



28

Records Technician Office



29

Irvine Home School



30

Guidance Resources



31

I.T. Support



32

Basketball Courts