

CAMPUS OBSERVATIONS

Classrooms

- 2 Kinder classrooms with 3 restrooms; one classroom only accessible through other Kinder room or through another classroom
- No doors on classrooms; problems with external noise and interruptions in lesson time
- No windows in classrooms (aside from few with sliding glass doors and Kinder classrooms with small windows); lack natural daylight
- Some classrooms have access to outdoor learning area; this is seen as beneficial
- Lack of dedicated music and art rooms; need for instrument storage space
- Music takes place in one portable and also in Rainbow Rising (Childcare) portable

- Lack of available rooms for RTI instruction
- 1 dedicated Science portable
- Special Education classrooms seem integrated in main building

Library/ Media

- Small but inviting space; lacks natural daylighting
- Located directly adjacent to 1st, 4th, and 5th grade classrooms; lack of doors may create acoustical issues
- Media Center/Computer Lab in separate room adjacent to Library

Food Service

- Inadequate in size and congested during lunch service
- Request for covered lunch area that protects students from rain

Multi-Purpose Room

- One open space without stepped seating; not big enough to accommodate large assemblies
- Stage is too small to be used as classroom
- Cannot expand MPR by opening into outdoor courtyard space or outdoor amphitheatre

Administrative Area

- Need for more space for counselors to meet with students

CAMPUS OVERVIEW

College Park Elementary School is a K-6 seasonal school. The school is situated directly next to College Park in a quiet residential setting, and the neighborhood in which the school resides has access to both the I-5 and the 261 toll road.

The Administrative area and the Multipurpose Room (MPR) are located on opposite ends of the building, and an Outdoor Learning Space can be found near the entrance to the Front Office.

Classrooms are organized in a grid-like pattern with the Kindergarten classrooms toward the back of the school behind Administration. Groupings of classrooms are organized somewhat sequentially from the primary level to the upper grade levels, though certain classrooms do not fit this rule. College Park classrooms have no doors, with the exception of the Kindergarten classrooms and the Computer Lab.

College Park supports a rich and diverse student body to reflect the school theme, "Passport to the World." Through the integration of sound instructional practices and high quality instructional materials, the school provides its students with the means to go beyond the "basics."

A unique event at College Park Elementary is its annual World's Fair, which involves the entire school population. The World's Fair consists of game booths, a food booth, a silent auction, and additional activities.

Mission Statement: To promote academic excellence, instill in students the technical skills necessary to succeed in the world of tomorrow, the power to think and express themselves clearly, and the values necessary to act well, appreciate life, and contribute to society.



College Park Elementary School



3700 Chaparral | Irvine, CA 92606
Site Analysis

General Condition

- Building aesthetics could be enhanced to improve 'curb appeal'
- Very few visual connections to outside; cement tilt up walls have no windows
- No inside doors on classrooms are a negative
- Positive elements include the tile walls created by 6th grade students

Technology & Infrastructure

- Main computer lab has 40 computers; two laptop labs have 35, 12 computers
- School is entirely wireless
- 5:1 ratio of students to computers in every class; LCDs, smart tablets, and quizzoms in every class
- No internal sound system for LCD computer systems; no distributed video system

Building Systems

- Mechanical equipment was replaced in 2005 modernization
- New chiller, boiler, triple deck air handling unit and one gas/electric roof top unit is integrated on a Carrier Energy Management System
- Site has photovoltaic panels

Collaboration & Small Group Space

- Lack of available spaces for small group instruction and student collaboration projects
- Currently, hallways, MPR, and outside benches are used for small group instruction due to lack of space

Outdoor Spaces

- Grounds generally look nice with plantings and maintenance
- Fields could benefit from improvement;

request for better quality grass, similar to Irvine park athletics fields

Wayfinding

- Signage difficult to see
- Circulation may be confusing for new students and visitors

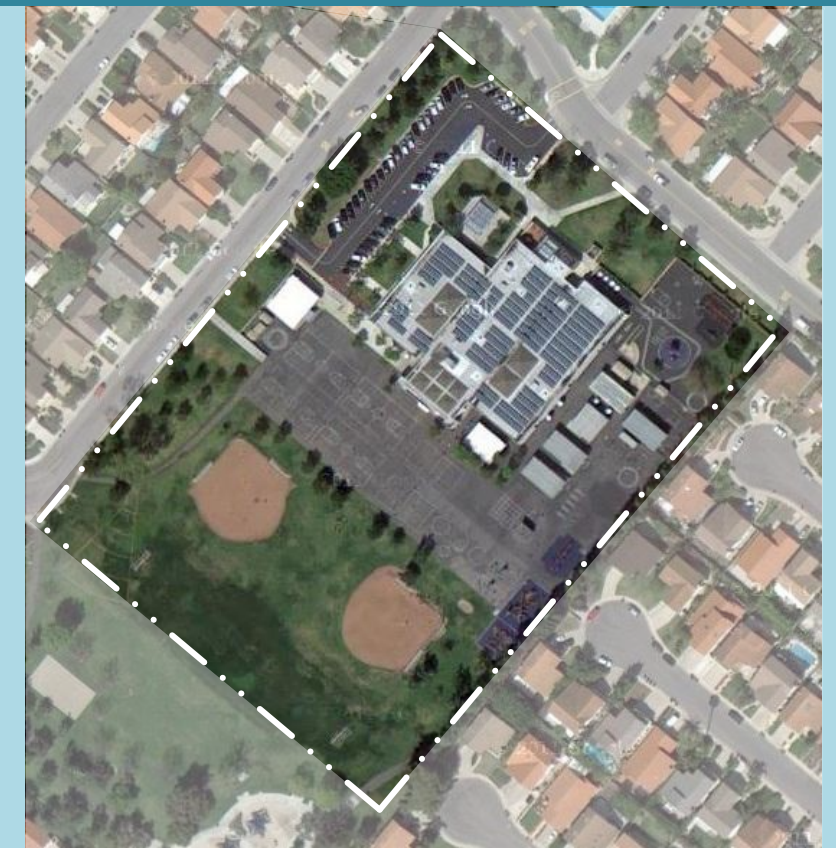
Vehicular Access/ Parking/ Drop-Off

- Parking lot is small and cannot adequately accommodate staff and visitors
- Lacking dedicated student drop-off and pick up area

Child Care

- Located in portables near parking lot

LPA





SCHOOL STATISTICS

Grades:	K-6
Building SF:	37,109
Portable SF:	8,632
2010/11 Enrollment:	797
Year Built:	1974
Modernization:	2004
Site Acreage:	8.8
# Portables:	5 + 2CC

CLASSROOM COUNT

Kindergarten	2
1st & 2nd Grade	7
3rd & 4th Grade	7
5th & 6th Grade (4 + 2 Portables)	6
Science (1 Portable)	1
Music (1 Portable)	1
Title 1	1
ELL (1 + 1 Portable)	2
RSP/SAI	2
Computer Lab	1
TOTAL	30

MEASURES OF QUALITY -

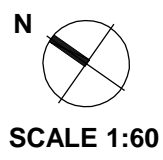
Measure	+
Wayfinding/ Entry/ Welcome	○ ● ○ ○
Natural Daylighting	● ○ ○ ○
Controllability (Daylight, Lighting, HVAC)	○ ● ○ ○
Flexibility in Classrooms	○ ● ○ ○
Access to Technology	○ ○ ● ○
Collaboration	○ ● ○ ○
Student Display	○ ● ○ ○
MPR	○ ● ○ ○
Library/ Media	○ ● ○ ○
Functional Landscaping	○ ● ○ ○
Energy Consumption	○ ○ ● ○
General Condition	○ ○ ● ○

LEGEND

- Main Entry
- Secondary Entry
- Drop-Off
- Main Circulation
- Playfields/ Landscape
- Hardcourts
- Play Apparatus
- Parking
- Trees

UTILIZATION LEGEND

- Kindergarten Classroom
- Classroom
- Science/ Art Lab
- Specialty Classroom
- Special Ed Classroom
- Portable (Color based on Program)
- Child Care (Portable)
- Other Space
- Kindergarten
- #"/> Grade Level
- Science
- Art
- Music
- English Language Learners
- Special Ed/Resource
- Specialized Academic Instruction
- Administration
- Computer Lab
- Unused Classroom





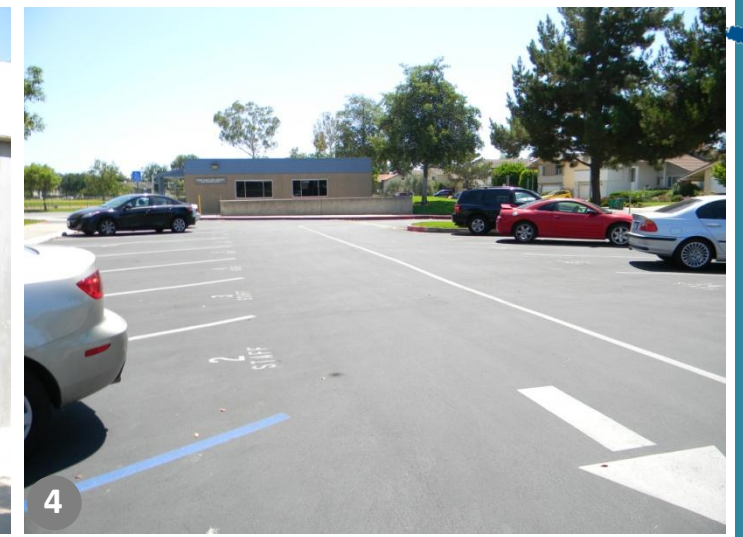
Front Entrance



Courtyard near Main Entry



Outdoor Learning Area



Parking



Front Entrance to Kindergarten Play Area



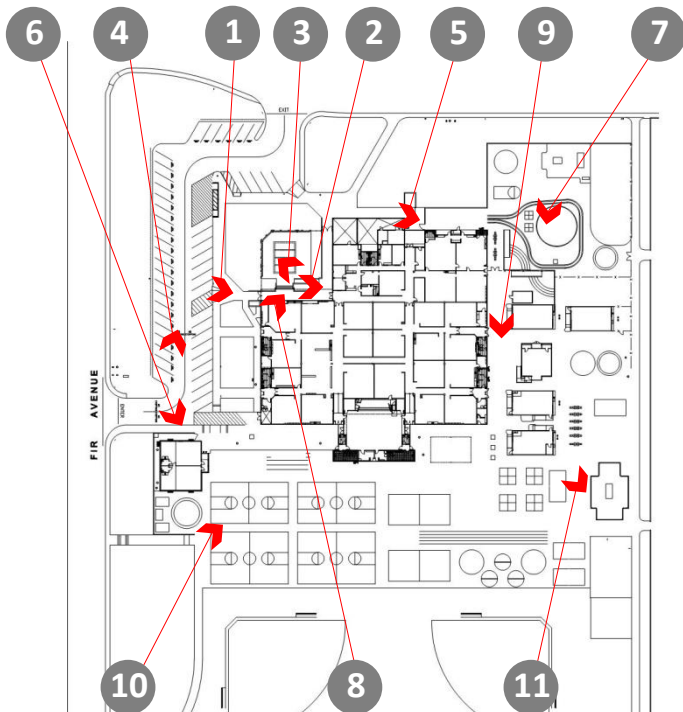
Childcare Portables



Kindergarten Play Apparatus



Student Tile Artwork outside Main Entrance



KEY MAP



Typical Portable



Volleyball Courts and Basketball Courts



Play Yard showing apparatus and fields



Bike Racks



Service Entrance



Tables in Kindergarten Play Yard



Food Service Queue Area



Main Office



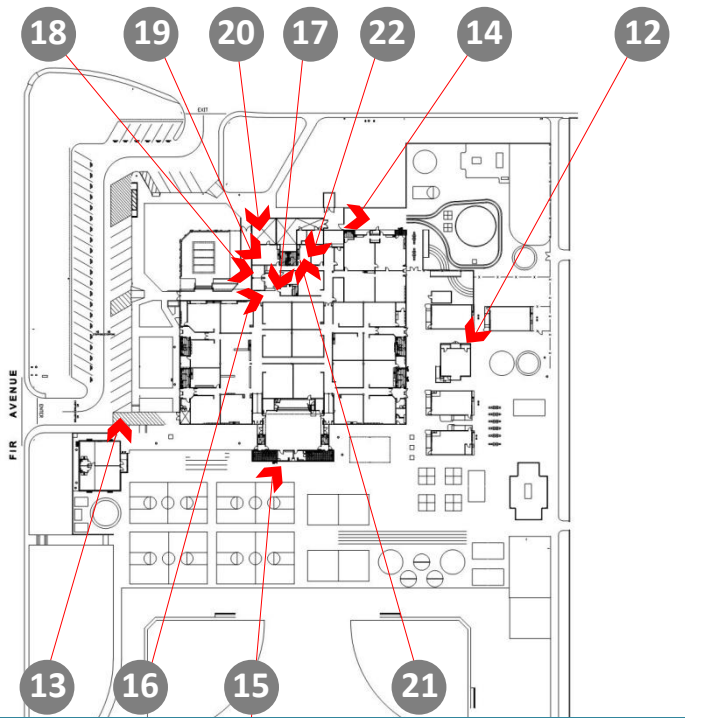
Health Office



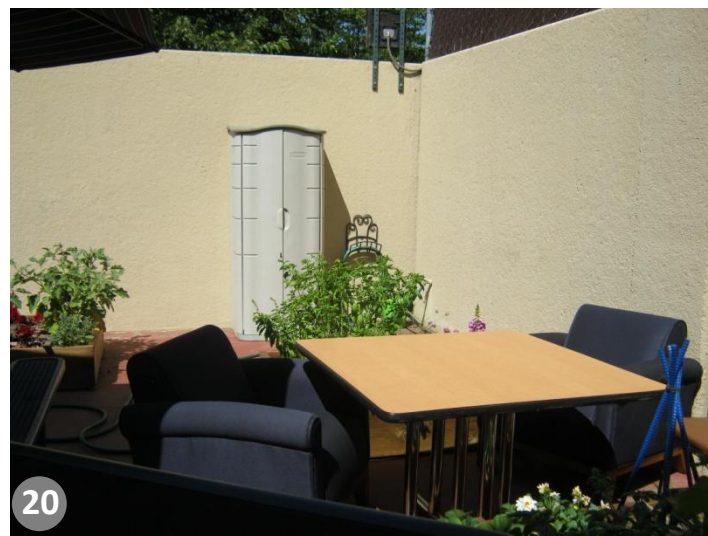
Principal's Office



Staff Lounge



KEY MAP



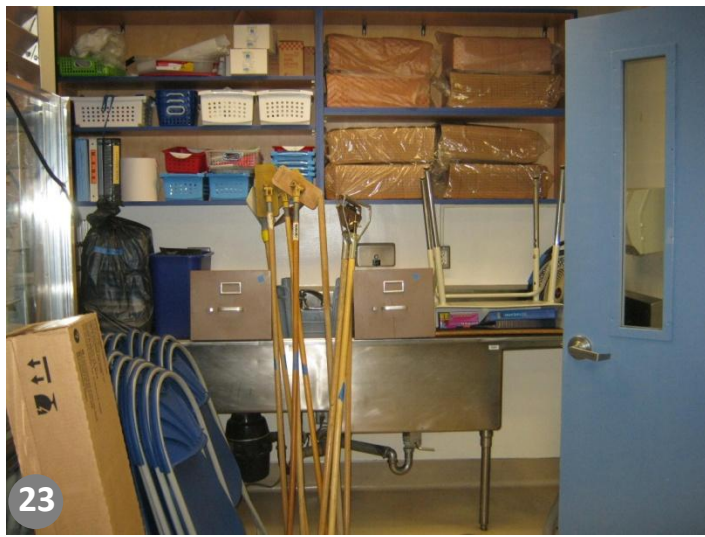
Staff Patio



Staff Workroom



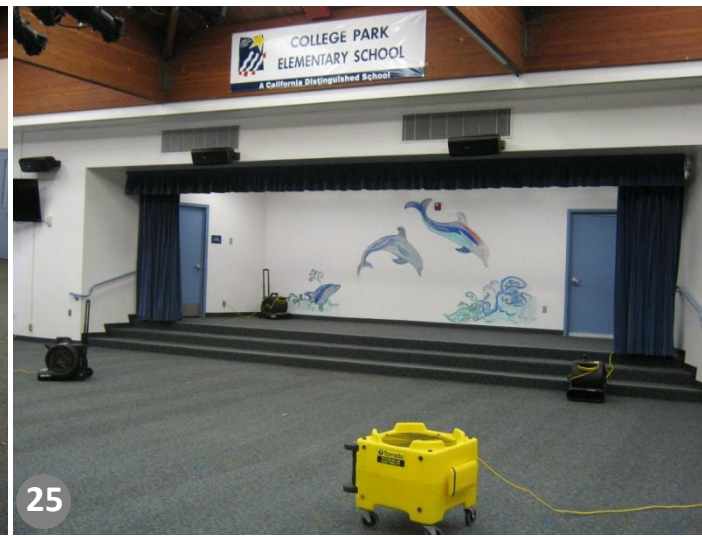
Psychologist Office



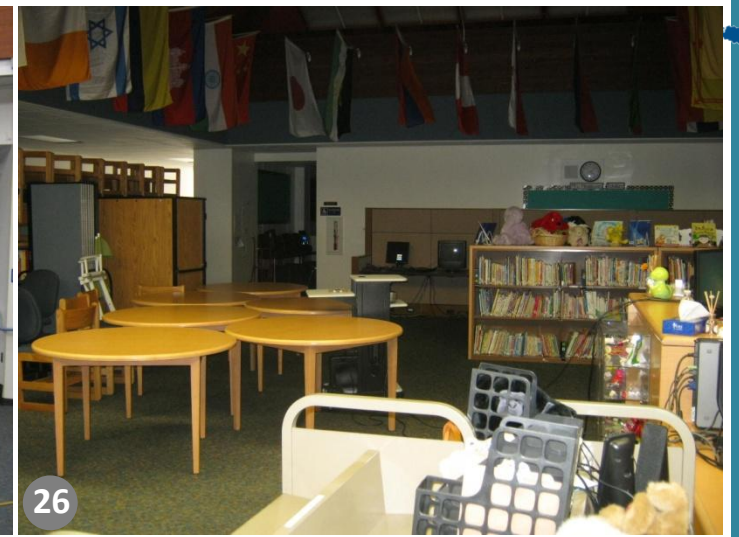
Food Service



MPR



MPR Stage



Library



Speech Room



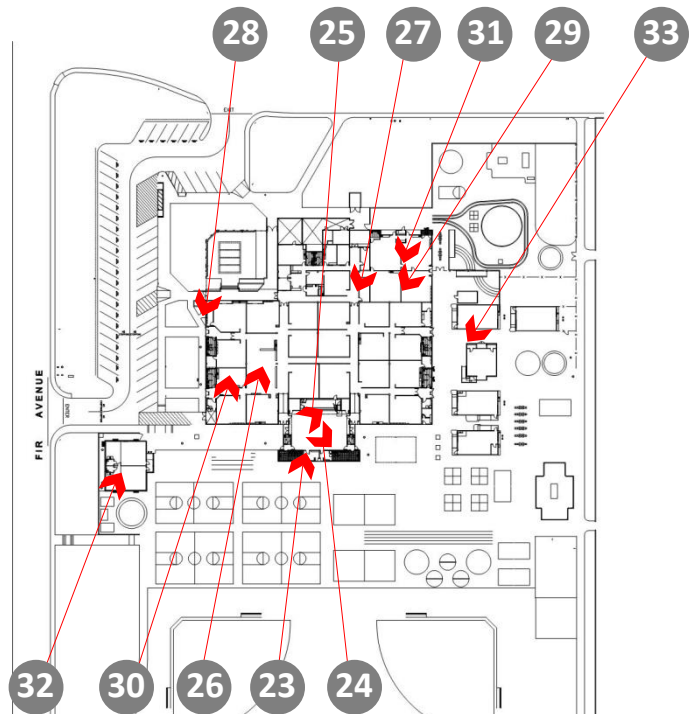
Fifth Grade Storage



Typical Classroom



Computer Lab



KEY MAP



Typical Kindergarten Classroom



Typical Childcare Portable



Science Portable