

CAMPUS OBSERVATIONS

Library/ Media

- Centrally located; access from all pods
- Speech/Psych located in perimeter offices/ conference spaces; adjacency may be noisy
- Computer lab is small

Classrooms

- Kinder classrooms lack Activity Center for breakout activities
- 1 SE Kinder classroom in portable; 1 Kinder shared with 1st Grade
- MPR Stage too small; used for other programs: OT/PT and Guidance Tech.
- Inadequate number of Music Classrooms; 1 in Portable, 1 shared use of MPR
- 1 Science Classroom in portable (shared with Music), on mobile carts, no water; need dedicated classroom
- 6th grade classrooms in portables

- Vocal classroom use child care space
- No small group collaboration spaces; use MPR, closets, halls
- Common work area outside classroom is small and narrow; has casework, oven, and sinks only
- Operable walls between classrooms and no doors into classrooms create acoustic issues
- Classroom groupings can be better organized
- Varied amounts of daylight in classrooms – some have 3 windows, some 2, some none.

Food Service

- Inadequately-sized and functions poorly
- Queue through one entry/ egress; shade and rain protected by building overhang
- Shade structure is not weather-protected

Multi-Purpose Room

- MPR is small
- No ability to open up into exterior courtyard
- Acoustic issues for adjacent classrooms
- Needs to be bigger with adequate storage
- Can only access two classroom wings through MPR, which can potentially be a disruption

Administration

- Main entry difficult to locate, adjacent to MPR doors, improved signage and entry features needed
- Need for large IEP meeting space, larger health office
- More area for display and posting information

CAMPUS OVERVIEW

Brywood Elementary School is a K-6 grade level school on a traditional calendar schedule. The school is situated directly adjacent to Brywood Park in a quiet residential setting. The neighborhood in which the school resides has access to the I-5 freeway.

The school consists of five classroom pods built around a Library/ Media center and multi-purpose room (MPR). The Administrative area is accessible from the main parking but is difficult to locate the main entrance with the MPR doors adjacent to the main office doors. The lobby, reception area is open to the Media Center circulation area. The MPR has a sliding glass door divider between the MPR and the Media Center. Pedestrian circulation patterns flow through the MPR space and Media center to get access to the classroom pods. Accordion doors divide the MPR from the adjacent classroom pods and do not provide adequate acoustic separation. There are two small atrium spaces at the entries of each classroom wing that allow for natural daylight and may enhance wayfinding. Brywood is eligible for modernization in 2013.

Brywood is a California Distinguished School as well as an NCLB National Blue Ribbon School. Science, mathematics, and art are strongly implemented into the teaching system. Brywood is committed to equipping students with the tools they need for academic, personal and social achievement.

Mission Statement: To enable every student to reach their highest potential by establishing a curriculum that meets or exceeds government standards for education; providing extracurricular programs that develop childrens' mental, physical, and social skills; and, partnering with parents and the community to create an environment geared to the success of all students.



Brywood Elementary School

1 Westwood | Irvine, CA 92620
Site Analysis



LPA

Infrastructure & General Condition

- Potential main electrical service upgrade required to support electrical needs
- Not very well daylight throughout building
- Potential surveillance concerns near portables

Vehicular Access/ Parking/ Drop-Off

- Vehicular access congested – currently use valet service.
- In need of dedicated drop-off lanes; need separate childcare drop-off
- Concern with pedestrian/vehicular conflicts

Technology

- Desire for better quality computers in hallways
- Currently have laptop carts but need more/ faster wireless and more laptops

Child Care

- Desire for adjacency to shade structure

Teacher Support

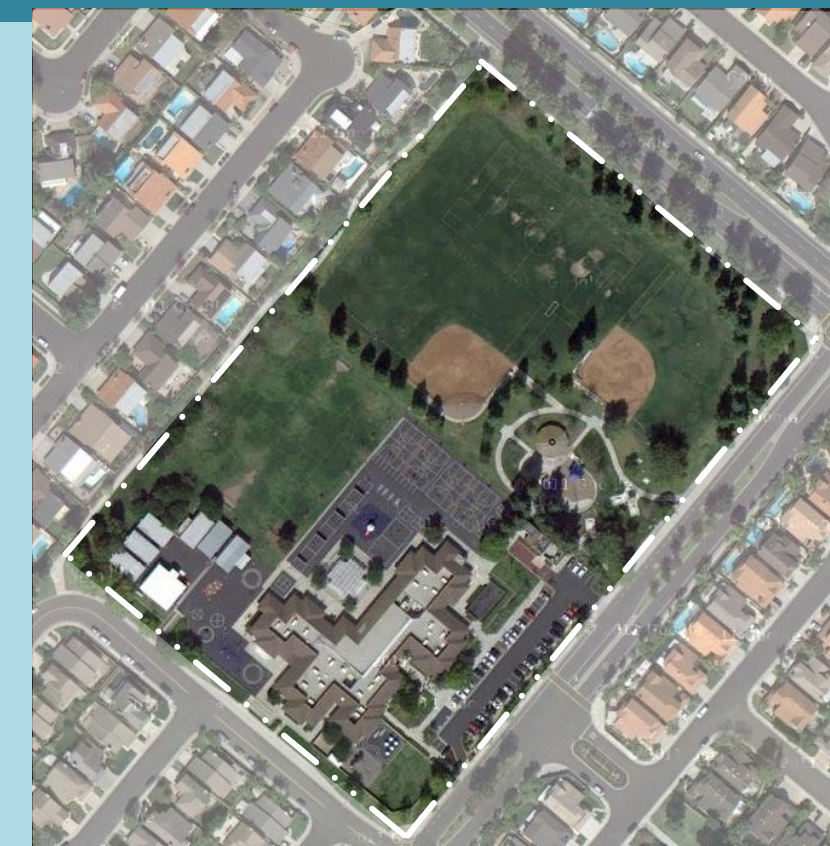
- Desire for more space for teacher use

Landscaping & Outdoor Learning

- Not many planter walls, landscaping, or shade opportunities on site behind main building

Building Systems

- Mechanical equipment is water source heat pump per zone with gas/electric units serving the MPR and library
- EMS integration for scheduling only
- School does not have photovoltaic panels



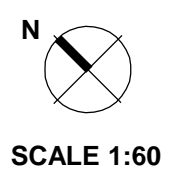


LEGEND

- ADAMS Main Entry
- Secondary Entry
- Drop-Off
- Main Circulation
- Playfields/ Landscape
- Hardcourts
- Play Apparatus
- Parking
- Trees

UTILIZATION LEGEND

- Kindergarten Classroom (K)
- Classroom (#)
- Science/ Art Lab (S)
- Specialty Classroom (A)
- Special Ed Classroom (M)
- Portable (Color based on Program)
- Child Care (Portable) (CC)
- Kindergarten (K)
- Grade Level Classroom (#)
- Science (S)
- Art (A)
- Music (M)
- Special Ed/Resource (RSP)
- Special Education (SE)
- Occupational Therapy/ Physical Therapy (OT/PT)
- Response to Intervention (RTI)
- Adaptive Physical Ed. (APE)
- Computer Lab (Comp.)
- Administration (Admin.)
- Unused Classroom (Open)



SCHOOL STATISTICS

| | |
|---------------------|---------|
| Grades: | K-6 |
| Building SF: | 34,510 |
| Portable SF: | 8,640 |
| 2010/11 Enrollment: | 632 |
| Year Built: | 1988 |
| Modernization: | (2013) |
| Site Acreage: | 6.0 |
| # Portables: | 7 + 2CC |

CLASSROOM COUNT

| | |
|---|-----------|
| Kindergarten | 2 |
| 1 st & 2 nd Grade | 4 |
| 3 rd & 4 th Grade | 5 |
| 5 th & 6 th Grade (4 + 3 Portables) | 7 |
| Science (shared portable) | .5 |
| Music* (shared portable) | .5 |
| RSP/RTI/OT/PT/APE/SE* (4 + 3 Portables) | 7 |
| Title 1 | 1 |
| Computer Lab | 1 |
| TOTAL | 28 |

*MPR used for Music and Special Ed as well

MEASURES OF QUALITY -

| Measure | + |
|--|---------|
| Wayfinding/ Entry/ Welcome | ○ ● ○ ○ |
| Natural Daylighting | ○ ● ○ ○ |
| Controllability (Daylight, Lighting, HVAC) | ○ ● ○ ○ |
| Flexibility in Classrooms | ○ ○ ● ○ |
| Access to Technology | ○ ● ○ ○ |
| Collaboration | ● ○ ○ ○ |
| Student Display | ○ ● ○ ○ |
| MPR | ● ○ ○ ○ |
| Library/ Media | ○ ● ○ ○ |
| Functional Landscaping | ● ○ ○ ○ |
| Energy Consumption | ○ ○ ● ○ |
| General Condition | ○ ● ○ ○ |



Sidewalk near Main Entry



Main Entrance



Front Entry & View of MPR Entrance



Parking and Drop-off



Bike racks



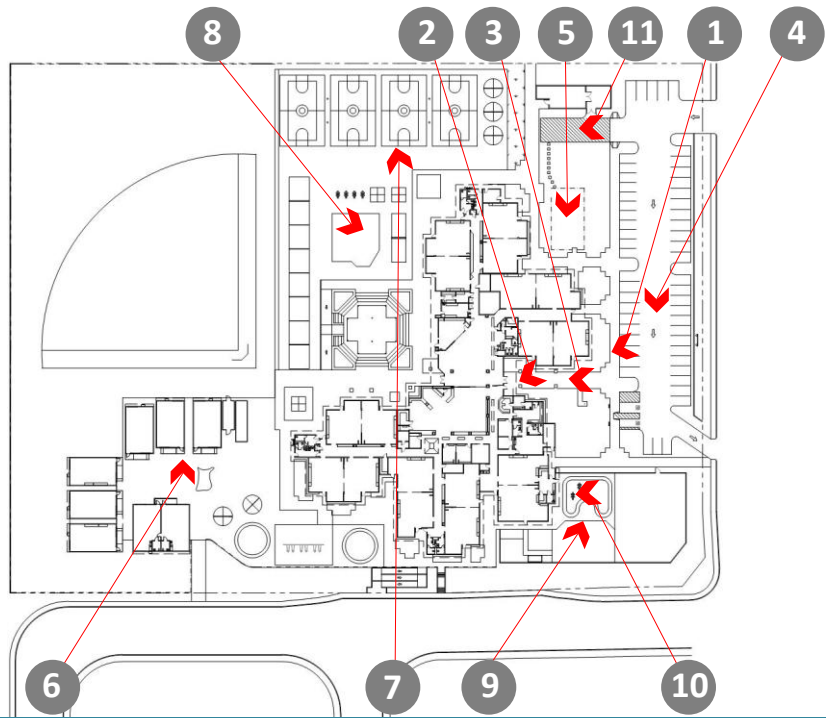
Classroom portables



Basketball courts and playfields



Play apparatus



KEY MAP



Kindergarten play area



Kindergarten seating area



Service Access/Entry



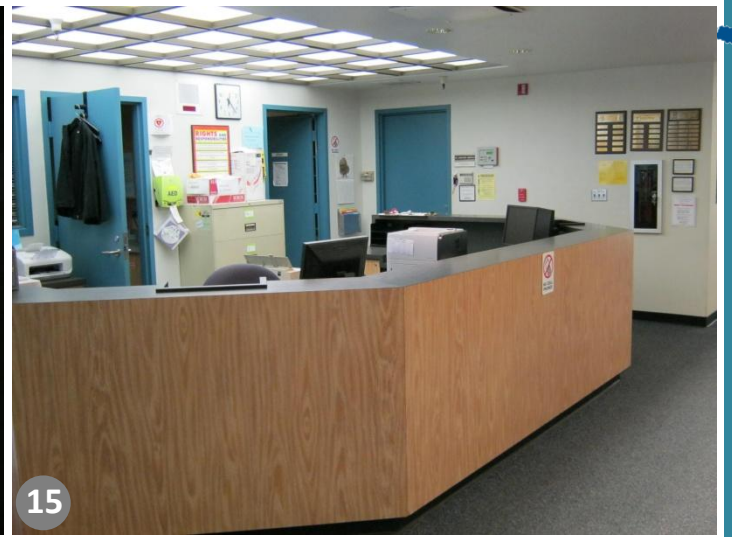
Mural on handball wall



Lunch Shelter



Inner courtyard near Library



Main office, adjacent to Library and MPR



Waiting area in MPR near Administration



Conference Room



Principal's Office



Health Office



KEY MAP



Staff Workroom



Staff Lounge



Small patio outside Staff Lounge





23

Library/Media Center



24

Computer Lab in Library



25

Speech Room near Library/Media Center



26

MPR



27

Typical Kindergarten classroom



28

Typical classroom



29

Sink and collaborative area in Kindergarten classroom



30

Typical hallway



KEY MAP



31

Music/OT/PT



32

Typical Bathroom



33

Food Service