

## CAMPUS OBSERVATIONS

### Classrooms

- 2 Kinder classrooms
- General classrooms grouped and connected to small, central collaboration/breakout space; these small areas have computer workstations (but do not accommodate ergonomic sitting)
- 10 portables being used as classrooms (1 for Music; 1 for Science); are not as functional as general classrooms
- Need for more small group space near classrooms to accommodate RTI groups

### Library/ Media

- Adjacent to MPR; not directly adjacent/easily accessible to all classrooms
- Described as “crowded but functional”

### Food Service

- Area seems small with potential for congestion
- One (1) entry/exit
- Current layout, setup, and presentation of food is described as not providing a sense to students and parents that nutrition is important

### Multi-Purpose Room

- Cannot open up space into central courtyard or outdoor amphitheatre
- Stage used as Music classroom, with moveable partition wall
- Stage is level with MPR floor, which results in less visibility during performances (MPR was formerly tiered); low ceiling minimizes options

### Administration & Support Space

- Work environment described as productive (since modernization & improvement of front office and large conference room), generally providing more space for teachers to work
- Front office seems small/narrow and somewhat cramped

## CAMPUS OVERVIEW

Bonita Canyon Elementary School is a K-6, seasonal public school. The school is situated directly adjacent to Chaparral Park in a quiet residential setting, and the neighborhood in which the school resides has access to both the 405 and the 73 toll road.

The Administrative area is located toward the front of the school with the Multipurpose Room (MPR) right beside the front office. The MPR includes a stage area at the same height as the rest of the room, and also a small conference room. The MPR has direct access to the library, which is located directly opposite of the stage.

With the exception of the Kindergarten classrooms, which are adjacent to the Administrative area, general classrooms are organized in clusters surrounding a small, central breakout/collaboration area with computers for student use.

Bonita Canyon has received the honor of being a Designated California Distinguished School three times (1989, 2006, 2010). The strong academic program includes Fine Arts, Science, and GATE, taught by experienced teachers in these fields. Additionally, the Bonita Canyon staff believes that through a process of collaboration and data analysis, student performance can be improved in all content areas.

Mission Statement: To enable all students to become contributing members of society empowered with the skills, knowledge, and values necessary to meet the challenges of a changing world.



# Bonita Canyon Elementary School



1 Sundance | Irvine, CA 92603  
Site Analysis

### General Condition

- Recently modernized (2009); clean and welcoming to students and parents
- Roofing job from modernization described as inadequate

### Aesthetic & Wayfinding

- Unique design with tall ceilings throughout many spaces
- Somewhat difficult to navigate and find classroom pods as newcomer

### Building Systems

- Mechanical equipment was replaced in 1995 modernization and are multi-zone Gas/electric units with furnaces scheduled by an Andover EMS
- Site does not have photovoltaic panels

### Technology

- Currently, small number of computers in

library, as well as computer lab adjacent to Library; difficult to accommodate full class

- Portables have limited access to computers; will be using laptop carts to attempt to address issue and will need more wireless accessibility
- Difficult to accommodate all computer lab needs due to scheduling issues; adding wireless lab to increase flexibility

### Vehicular Access/ Parking/ Drop-Off

- Small parking lot; does not adequately accommodate staff and visitors, particularly on days with Music and Science
- Abundant foot traffic before and after school; can be safety issue, as traffic moves somewhat quickly on adjacent roadway (Turtle Rock Dr)

### Child Care

- Located in portables toward front of school (southern part of site, adjacent to parking lot)

### Outdoor Areas & Landscaping

- Overall, a number of green areas, shade opportunities from trees, benches
- Fields have gopher holes that decrease functionality and safety
- Campus is open and adjacent to public park (Chaparral Park)
- Lunch shelter provides shade but is not rainproof
- Kinder play area does not have play apparatus

### Additional Notes

- Elicits pride as “small school;” parents are connected and invest heavily in school

LPA





## SCHOOL STATISTICS

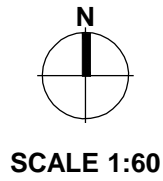
Grades:	K-6
Building SF:	23,606
Portable SF:	11,520
2010/11 Enrollment:	507
Year Built:	1977
Modernization:	2009
Site Acreage:	9.1
# Portables:	10 + 2CC

## CLASSROOM COUNT

Kindergarten	2
1st & 2nd Grade (3 + 2.5 Portables)	5.5
3rd & 4th Grade (1 + 3.5 Portables)	4.5
5th & 6th Grade (3 + 2 Portables)	5
Science (1 Portable)	1
Music (1 Stage + 1 Portable)	2
Not Used	1
RSP	1
Computer Lab	2
<b>TOTAL</b>	<b>24</b>

## MEASURES OF QUALITY - +

Wayfinding/ Entry/ Welcome	○ ● ○ ○
Natural Daylighting	○ ● ○ ○
Controllability (Daylight, Lighting, HVAC)	○ ● ○ ○
Flexibility in Classrooms	○ ○ ● ○
Access to Technology	○ ● ○ ○
Collaboration	○ ● ○ ○
Student Display	○ ● ○ ○
MPR	○ ● ○ ○
Library/ Media	○ ● ○ ○
Functional Landscaping	○ ○ ● ○
Energy Consumption	○ ○ ○ ●
General Condition	○ ○ ● ○



PLAYFIELDS

HARDCOURTS

PLAY APPARATUS

LUNCH SHELTER

FOOD SERVICE

LIBRARY MEDIA

MPR

ADMIN

KINDER PLAY

PARKING (+/- 31)

BIKE RACK

CC

CC



Front of School



Main Entrance



Seating Area in Front of School



Drop-Off



Parking



Instructional Garden



Kindergarten Play Area



View toward Food Service



KEY MAP



Exterior Courtyard



Hardball Courts



Play Fields near Hardball Courts



Play Apparatus



Outdoor Seating near Play Area



Lunch Shelter



Service Access



Bike Racks



Portables



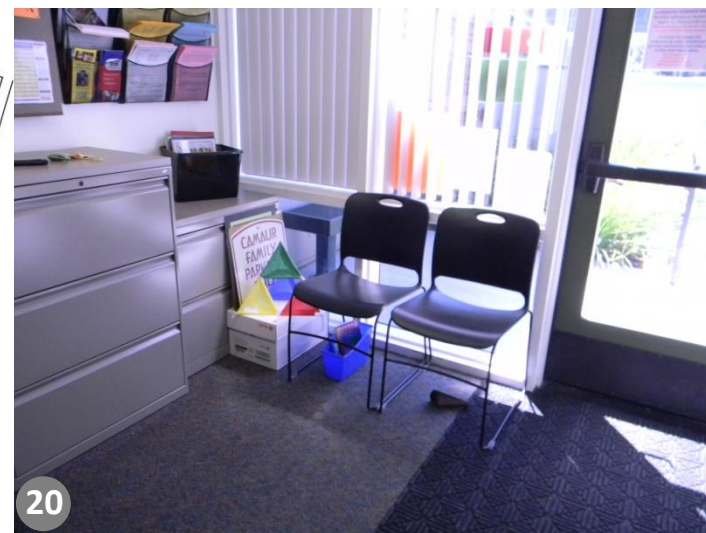
Storage Shed



Main Office



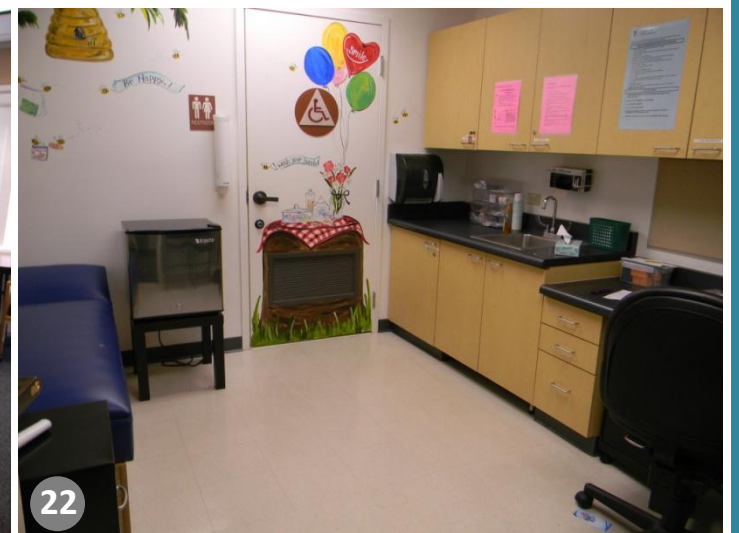
KEY MAP



Seating Area in Main Office



Conference Room



Health Office



Staff Workroom



Staff Lounge



Staff Patio



Psychologist Office



Library



Computer Stations in Library/Media Center



Computer Lab/Media Center



MPR Stage



KEY MAP



MPR



Speech Office



Reading Room



34 Windows along Kindergarten Classroom wall



35 Typical Kindergarten Classroom



36 Typical Collaboration Area



37 Typical Classroom



38 Backpack Storage near Portables



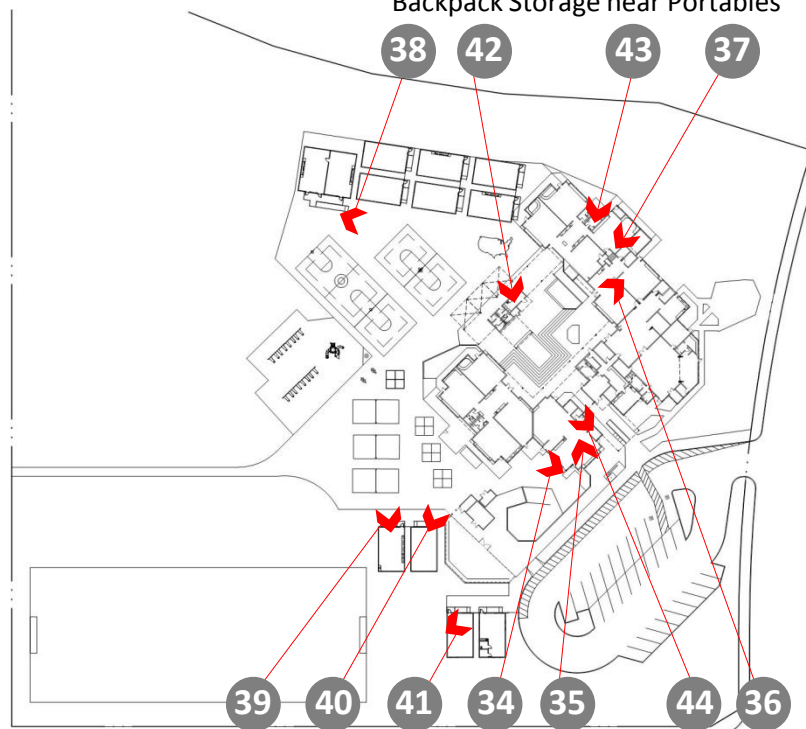
39 Science Portable



40 Music Portable



41 Typical Childcare Portable



42 Food Service



43 Typical Bathroom



44 Teacher Workroom