



# IRVINEUSD

Facilities Study Session  
April 30, 2019

## Board of Education

Paul Bokota

Lauren Brooks, President

Betty Carroll

Ira Glasky

Sharon Wallin



# AGENDA

## Enrollment Projection Update (Through 2028)

- Residential Development Updates
- Projection Methodology
- Capacity Versus Projections
- Community Updates
  - Alderwood and Oak Creek

## State Funding Update

## Sustainability Program Overview

## Project Updates

- Projects in Planning
- Projects Under Construction

## Measure E Update

- Study Session – June 4, 2019



IRVINE UNIFIED  
SCHOOL DISTRICT



IRVINE UNIFIED  
SCHOOL DISTRICT



# ENROLLMENT PROJECTION UPDATE

# RESIDENTIAL DEVELOPMENT UPDATES







## RESIDENTIAL DEVELOPMENT UPDATES

- **Irvine Company Units**
- **Heritage Fields Units**

**RESIDENTIAL  
DEVELOPMENT  
UPDATES**

# IRVINE COMPANY DEVELOPMENT UPDATE

## RESIDENTIAL DEVELOPMENT UPDATES

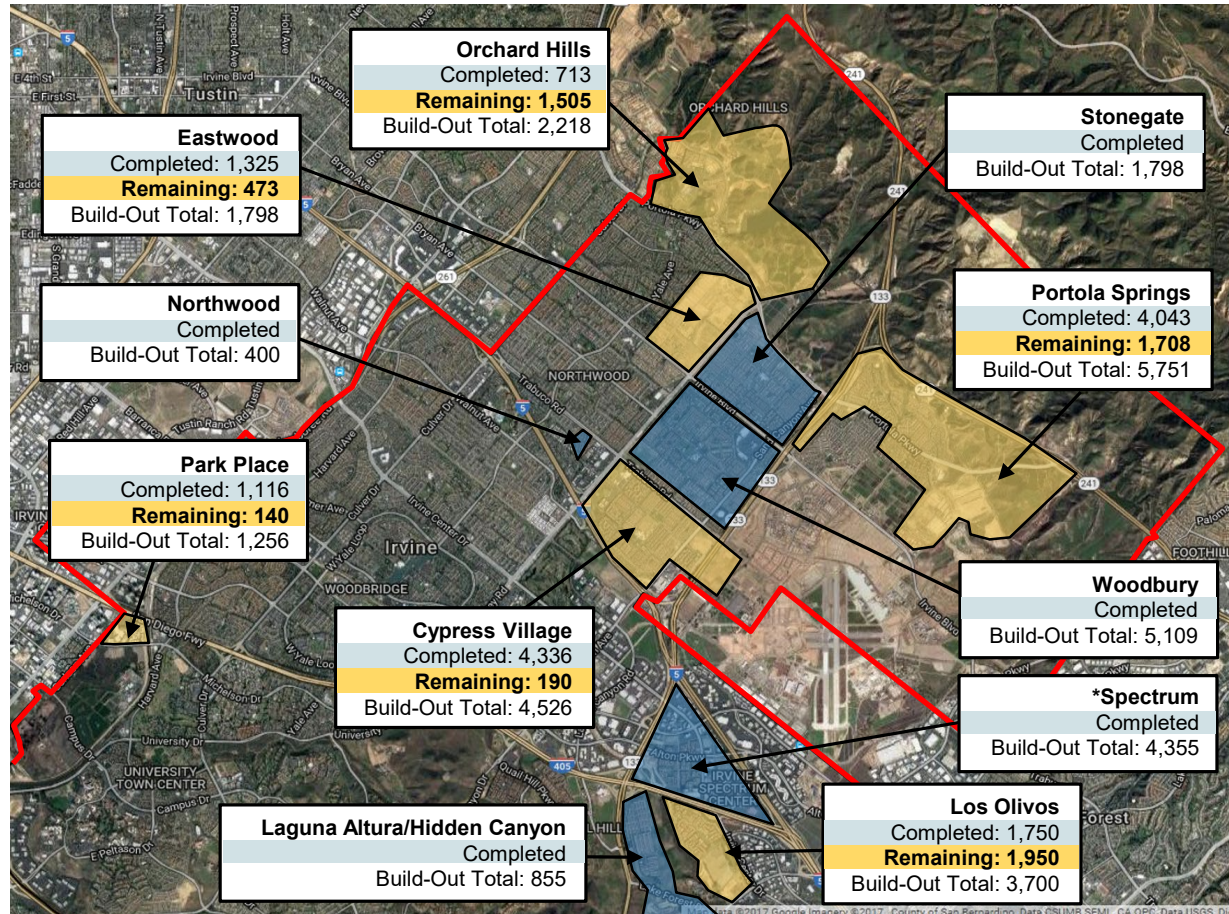
Total Unit Build-Out	
Development Status	# of Units
Completed	27,357
Remaining	5,966
Total Buildout*	33,323

\* Includes Park Place and Spectrum Apartments which are not part of the 2009 agreement but are otherwise subject to mitigation obligations.

Excludes 177 affordable units in Cypress Village (77) & Portola Springs (100) to be built by the City through the Irvine Land Trust.



IRVINE UNIFIED  
SCHOOL DISTRICT



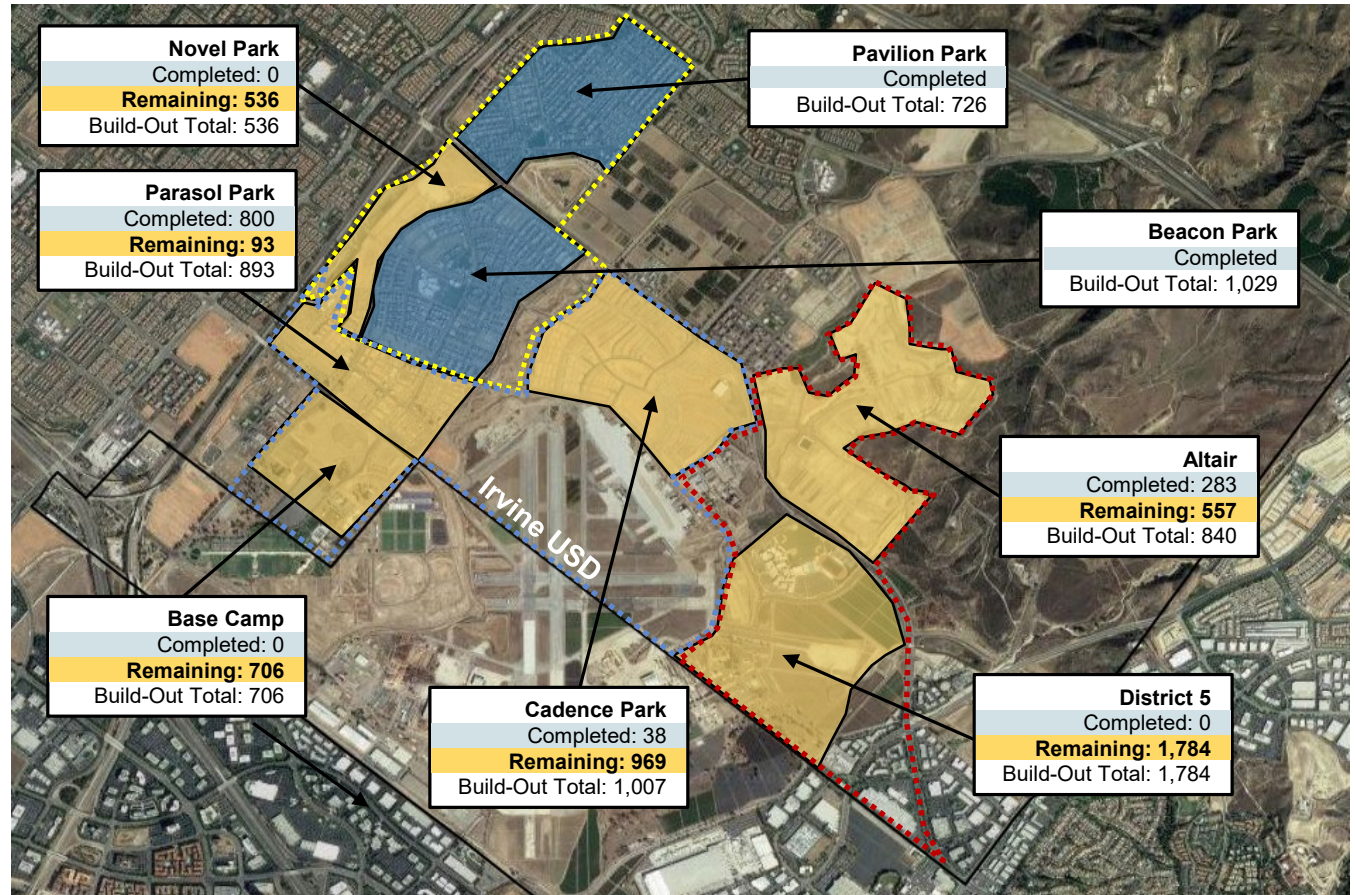
Source: TIC BP (9/24/18). Completed units are as of October 2018.



# HERITAGE FIELDS DEVELOPMENT UPDATE

## RESIDENTIAL DEVELOPMENT UPDATES

Total Unit Build-Out	
Development Status in IUSD	# of Units
Completed	2,876
Remaining	4,645
Total Buildout*	7,521



Source: Fall 2018 Business Plan (2/25/19 Update). Completed units as of October 2018.



IRVINE UNIFIED  
SCHOOL DISTRICT

## HERITAGE FIELDS DEVELOPMENT UPDATE

- FivePoint presented a revised business plan in October 2018 that included an additional 292 units within the Great Park Neighborhoods from the previous business plan provided in 2017.
- An updated business plan was presented February 2019 that include an additional 85 units for a total of 377 units. Buildout phasing delayed from previous business plans.
- This remains within the 9,500 units that FivePoint has residential entitlements for in the Great Park Neighborhoods.
- Based on recent action of the City Council, 1,056 affordable housing units are excluded from the 9,500 residential entitlements.





## MITIGATION AGREEMENT WITH HERITAGE FIELDS

Heritage Fields Mitigation Agreement contains language addressing additional entitlements and development

Section 7.2:

*“Additional Mitigation for these purposes means construction or financing of (a) new K-8 facilities, or (b) financing of 9-12 facilities beyond 50% of the capacity of the High School, which facilities are capable of accommodating all of the Project Students generated by the Additional Entitlements”*



## HERITAGE FIELDS COMMUNITY UPDATE

- In the Fall of 2018 Heritage Fields homes generated less students than projected.
- In February 2019 Heritage Fields provided a projected business plan that delayed development of Cadence Park, Novel Park, Altair, Base Camp, and District 5.
- As a result of the above changes, the projected need for a third K-8 in Heritage Fields is anticipated in the Fall 2021 or Fall 2022.
- Staff anticipates providing a comprehensive update on the need for a third K-8 in Heritage Fields during the 2019 Fall Study Session.

**RESIDENTIAL  
DEVELOPMENT  
UPDATES**

# PROJECTION METHODOLOGY



# TK-12 ENROLLMENT PROJECTIONS: STUDY SCENARIOS

## Aggressive School Projections (Recent Development Gen Rates)

- Illustrative of most aggressive growth in District
- Used for the planning of facilities
- Used in the process of creating/changing boundaries
- Used for timing of new school openings (within mitigation agreements)

## Conservative School Projections (Recent Development Gen Rates)

- Illustrative of less aggressive growth in District (30% lag in development)
- Used for District staffing
- Used for General Fund budgeting

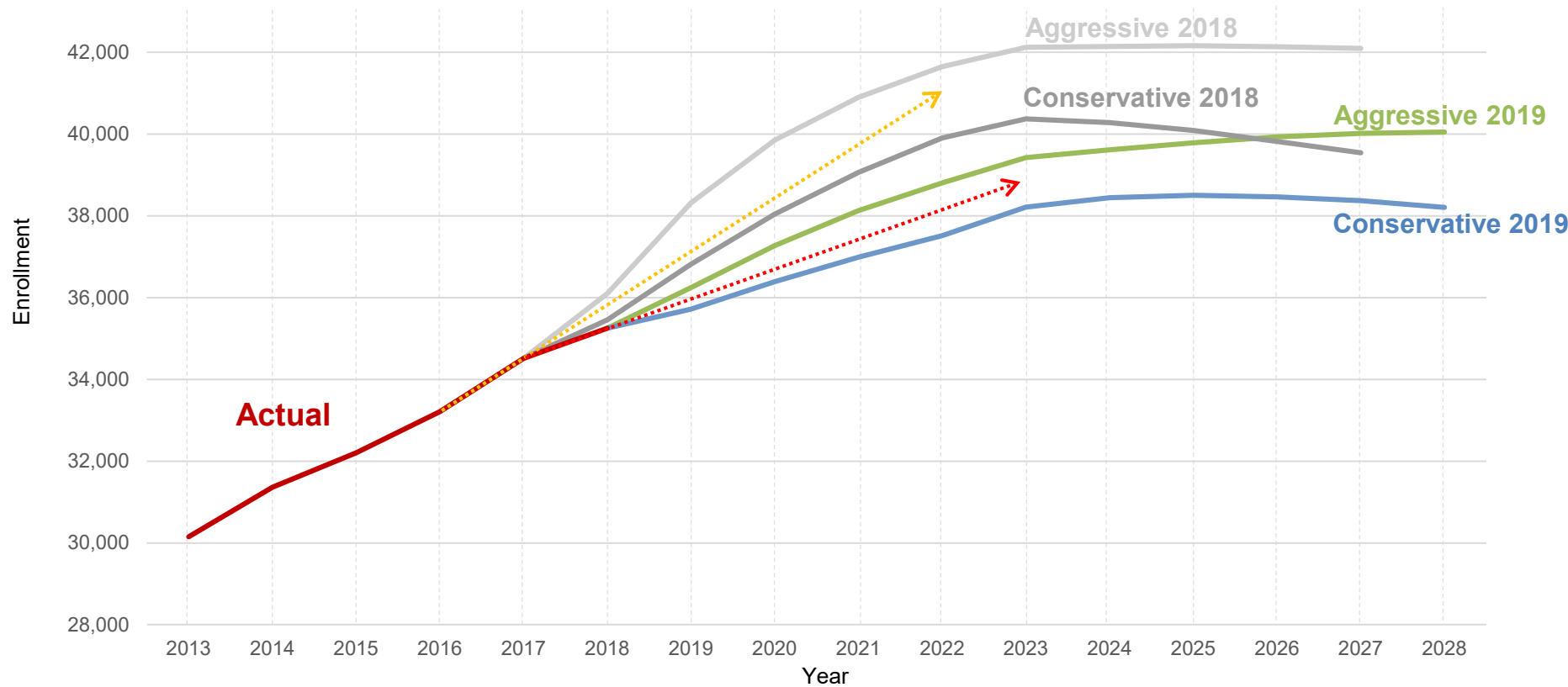
## Geographic Projections

- Illustrative of projected students within a geographic boundary
- Used for analysis of various planning scenarios



# DISTRICTWIDE PROJECTIONS

## Projected Enrollment Growth



## PROJECTION METHODOLOGY: THE BUILDING BLOCKS

Historical data used in projections are critical to overall accuracy. Each new year builds upon the last in order to set the projection trend.

### **HISTORIC COHORT AGE THROUGH (Geographic Projections)**

- Percentage of students moving on from one grade to the next
- Most influential in projecting existing neighborhoods

### **GENERATION RATES (Geographic Projections)**

- Historically, the number of students generated by housing
- Most influential in projecting communities with new housing

### **DWELLING UNITS AND PHASING (Geographic Projections)**

- At buildout, how many units and what type are going to be built in an area? How fast are the units going to be built, sold, and occupied?
- Most influential in projecting communities with new housing

**SLIDES 15-19 INTENTIONALLY REMOVED  
AND WILL BE PRESENTED AT A FUTURE BOARD MEETING**

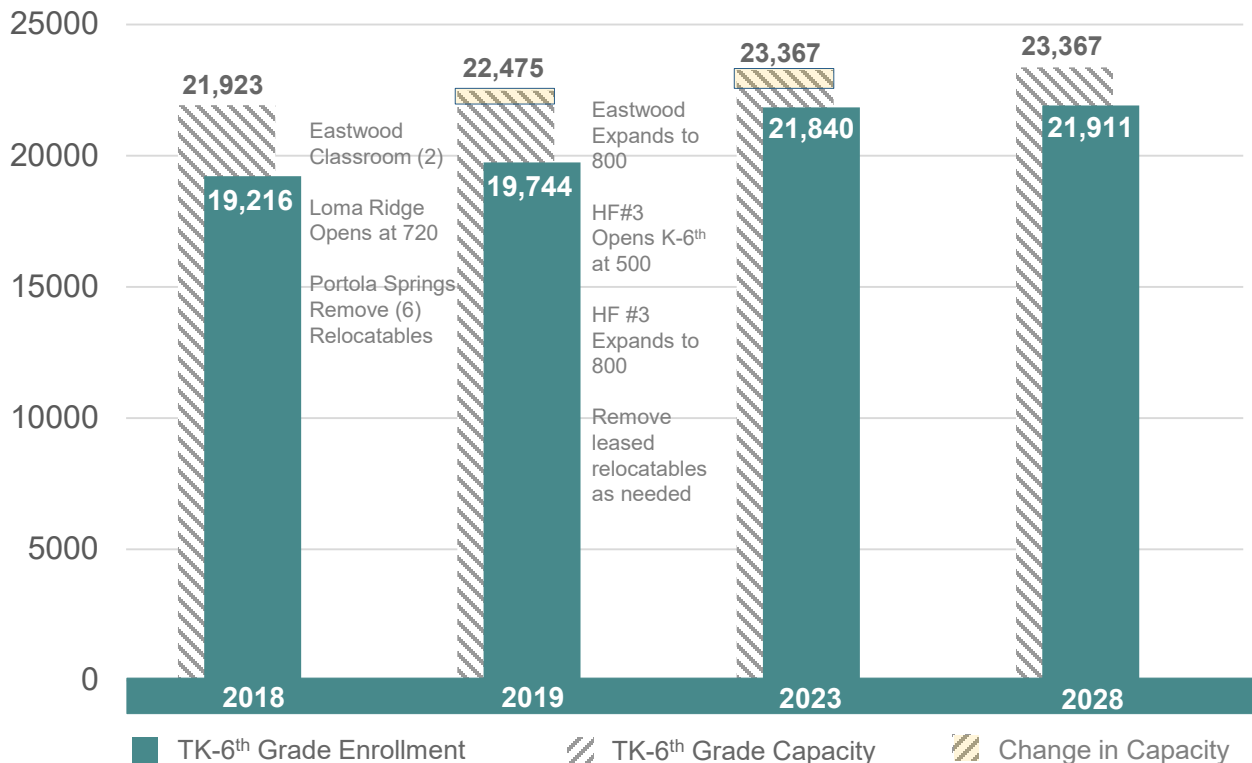
# CAPACITY VERSUS PROJECTIONS





# ELEMENTARY SCHOOL CAPACITY VS ENROLLMENT

## AGGRESSIVE ENROLLMENT PROJECTIONS SUMMARY



Source: CBED October 2018; IUSD19Mod Recent Development Projections, include SDC students  
 Note: Includes K8 enrollment and capacity for grades TK-6. Projects and timing of projects are subject to change.

**DISTRICTWIDE  
CAPACITY  
VERSUS  
PROJECTIONS**

# ELEMENTARY SCHOOL CAPACITY VS ENROLLMENT

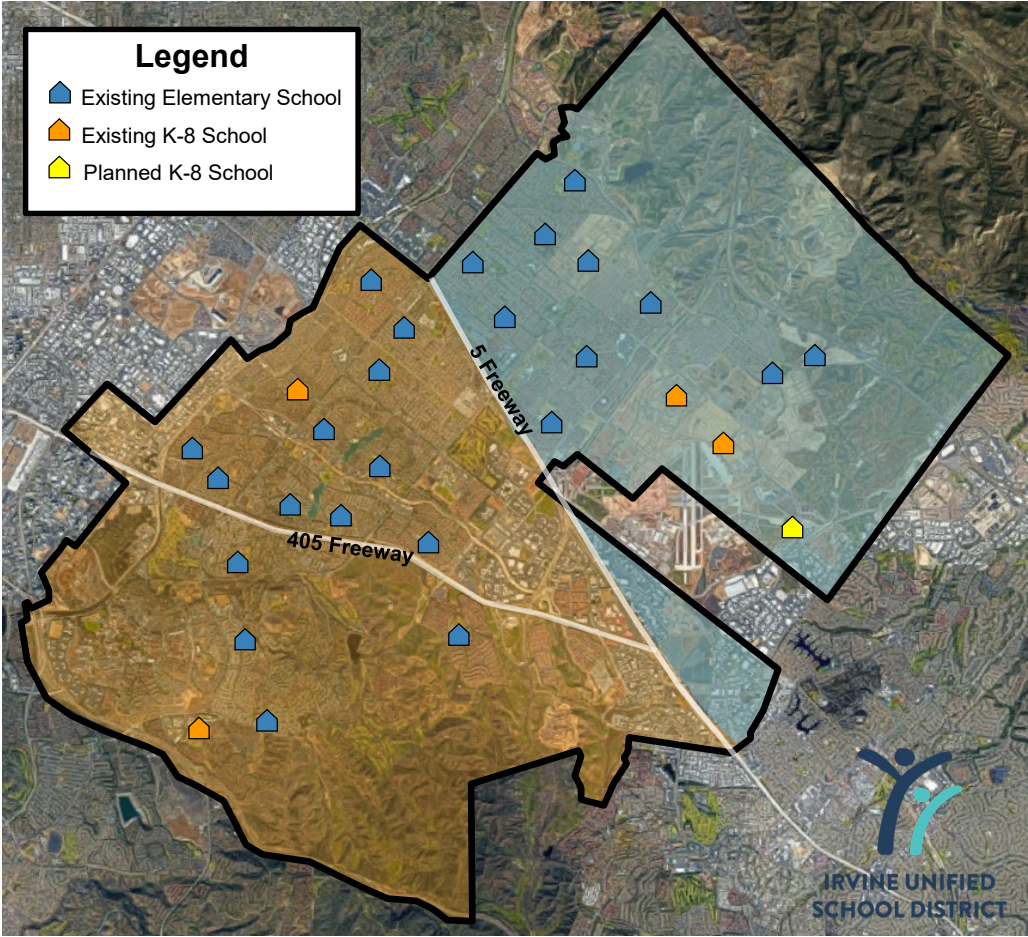
## AGGRESSIVE ENROLLMENT PROJECTIONS

North of the Interstate 5	2018	2019	2023
ES Capacity	9,670	10,222	11,114
ES Enrollment	8,319	8,875	10,729
Open Seats	1,351	1,347	385
South of the Interstate 5	2018	2019	2023
ES Capacity	12,253	12,253	12,253
ES Enrollment	10,897	10,869	11,111
Open Seats	1,356	1,384	1,142

Source: IUSD19Mod Enrollment Projections, includes SDC

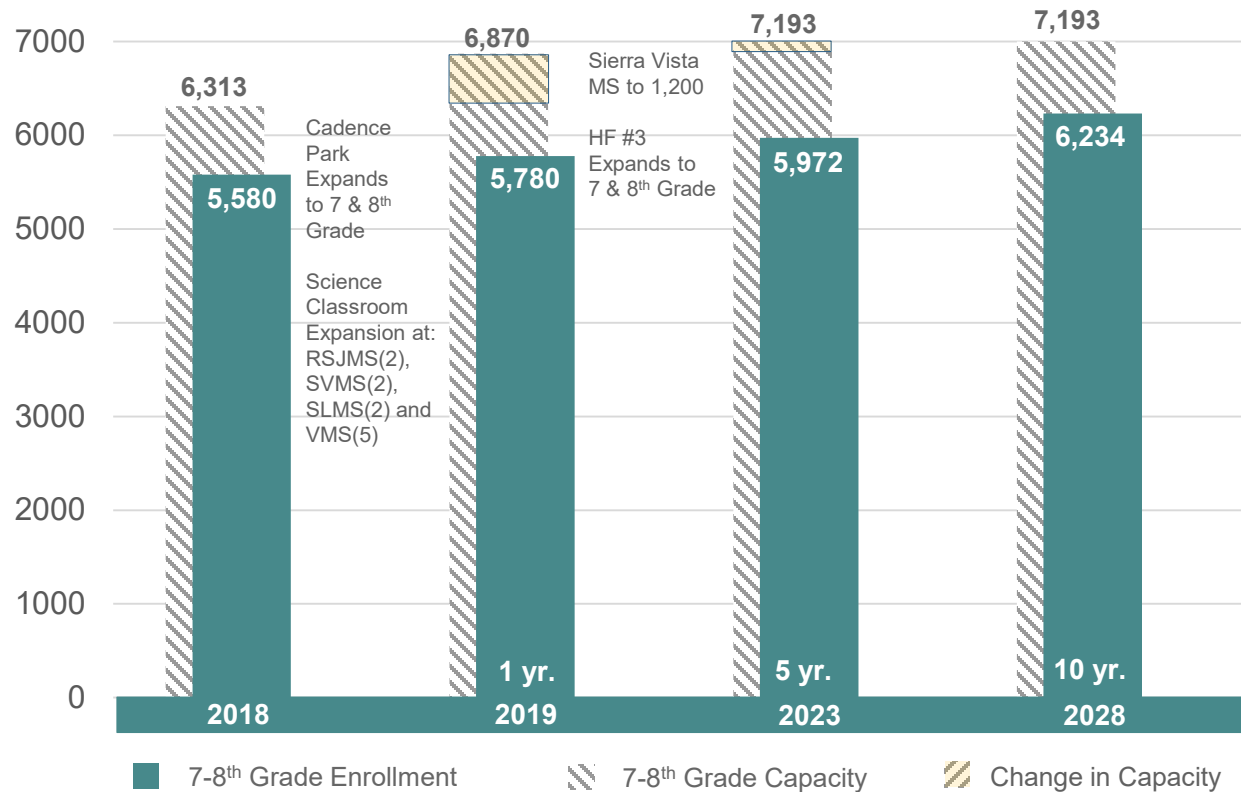
Schools North of I-5	
Existing ES	10
Existing K-8	2
Planned K-8	1
<b>Total</b>	<b>13</b>

Schools South of I-5	
Existing ES	14
Existing K-8	2
<b>Total</b>	<b>16</b>



## MIDDLE SCHOOL CAPACITY VS ENROLLMENT

### AGGRESSIVE ENROLLMENT PROJECTIONS SUMMARY



Source: IUSD19Mod Recent Development, Projection includes SDC students, CBED October 2018  
 Note: Includes K8 capacity grades 7<sup>th</sup> and 8<sup>th</sup>. Projects and timing of projects are subject to change.



# MIDDLE SCHOOL CAPACITY VS ENROLLMENT

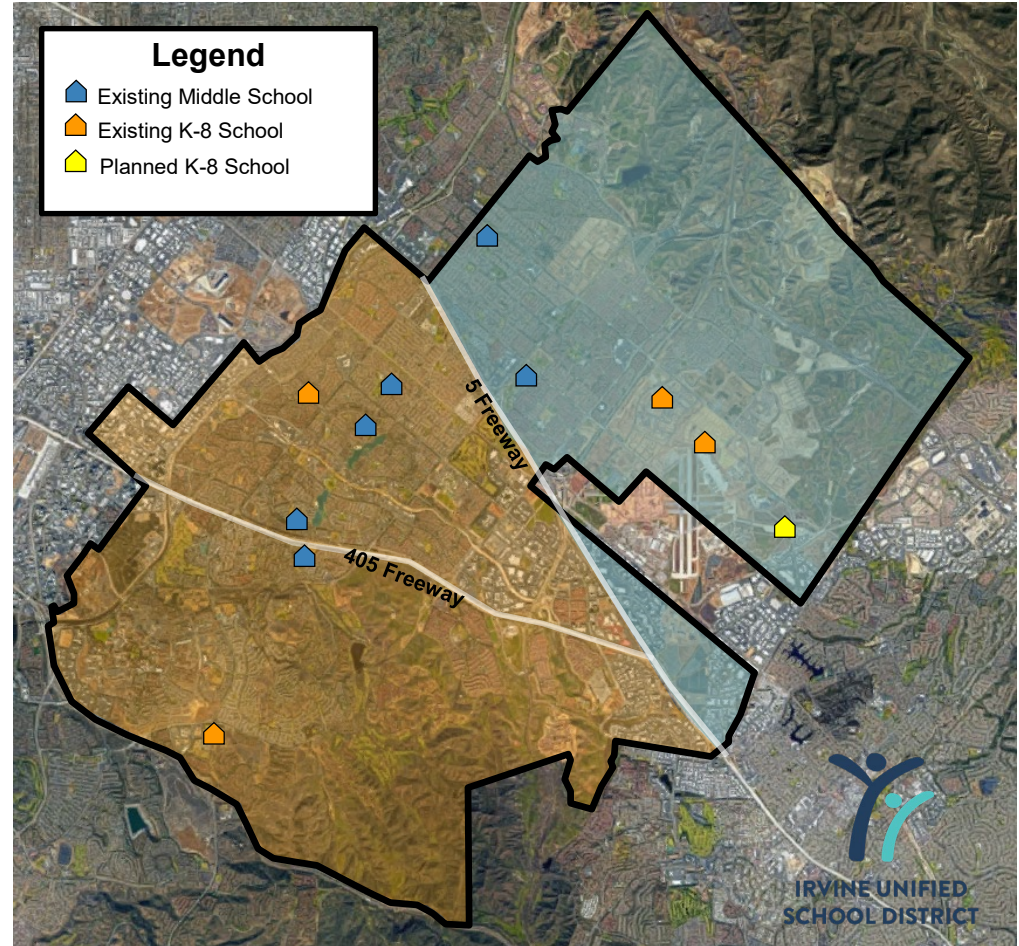
## AGGRESSIVE ENROLLMENT PROJECTIONS

North of the Interstate 5	2018	2019	2023
MS Capacity	2,413	2,677	3,000
MS Enrollment	2,352	2,512	2,916
Open Seats	61	163	84
South of the Interstate 5	2018	2019	2023
MS Capacity	3,900	4,193	4,193
MS Enrollment	3,228	3,268	3,056
Open Seats	672	925	1,137

Source: IUSD19Mod Enrollment Projections, includes SDC

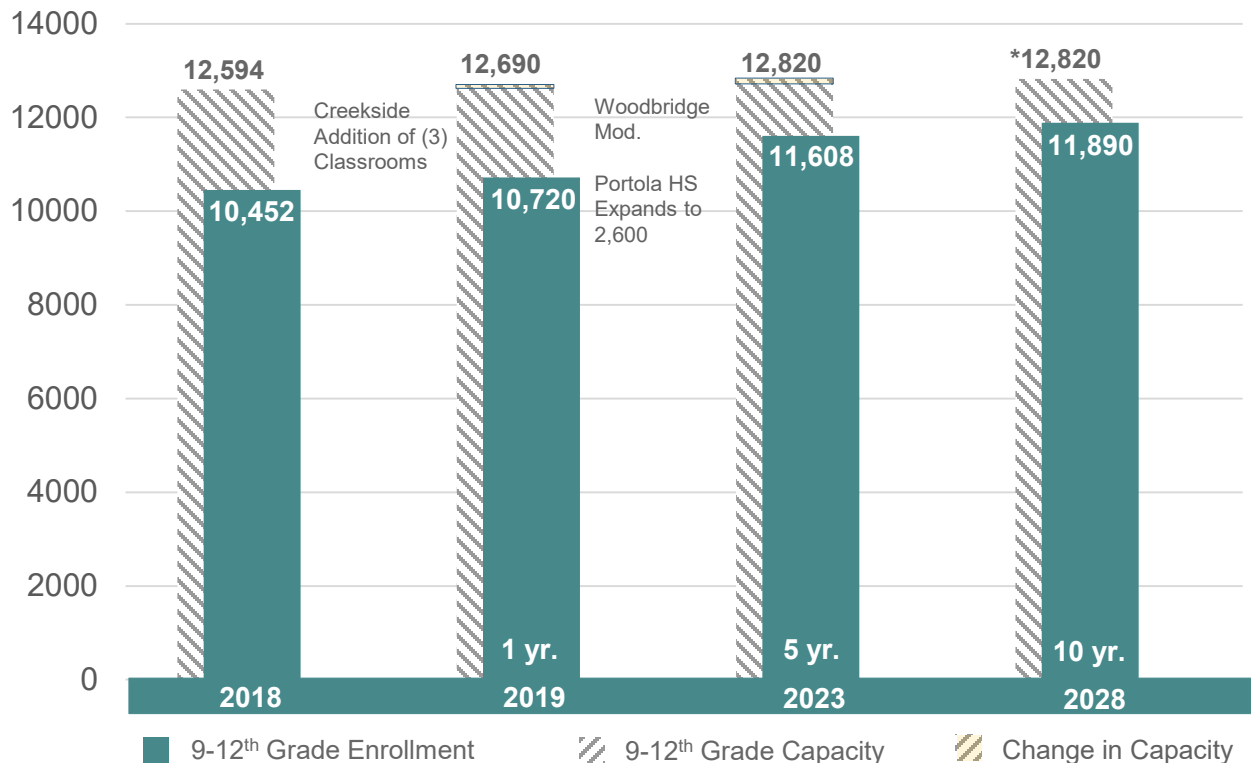
Schools North of I-5	
Existing MS	2
Existing K-8	2
Planned K-8	1
<b>Total</b>	<b>5</b>

Schools South of I-5	
Existing MS	4
Existing K-8	2
<b>Total</b>	<b>6</b>



# HIGH SCHOOL CAPACITY VS ENROLLMENT

## AGGRESSIVE ENROLLMENT PROJECTIONS SUMMARY



Source:IUSD19Mod Recent Development, Projections include SDC students, CBED October 2018

Note: Projects and timing of projects are subject to change.

\*Ability to expand each HS to 2,600 to increase capacity to 13,396, if needed

**DISTRICTWIDE  
CAPACITY  
VERSUS  
PROJECTIONS**

# HIGH SCHOOL CAPACITY VS ENROLLMENT

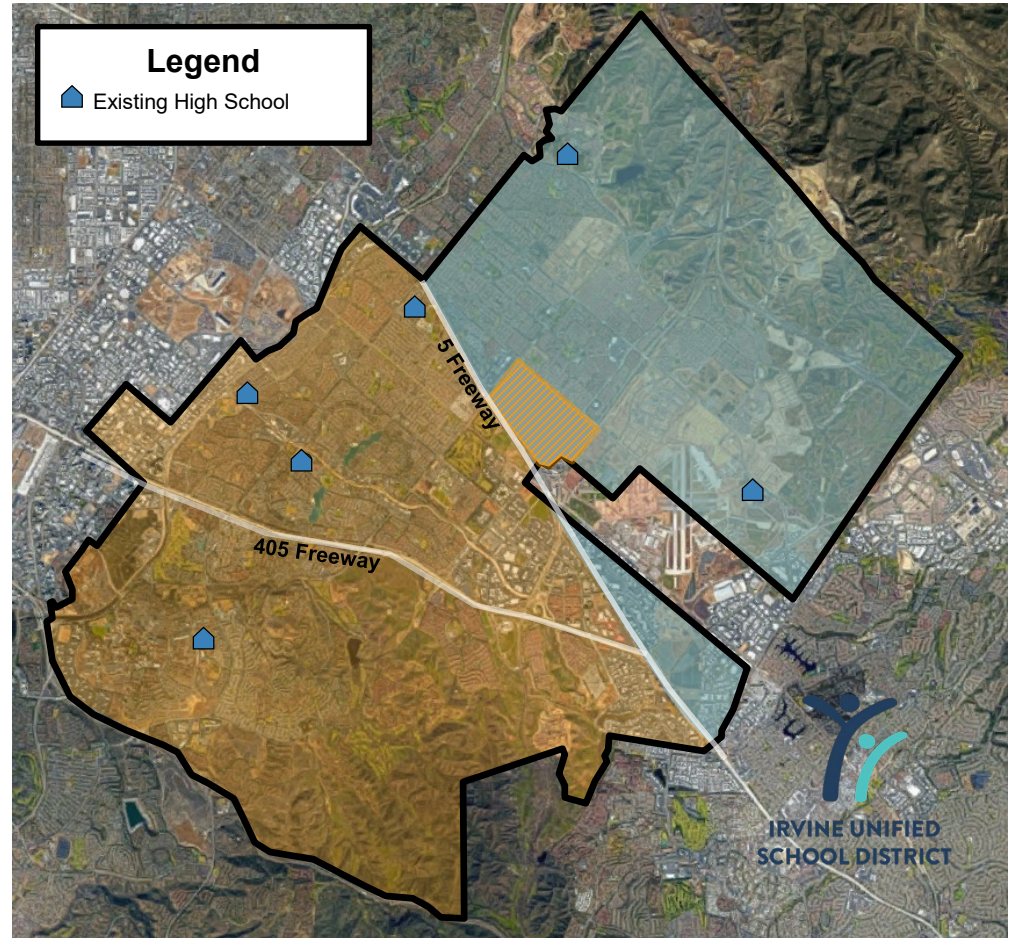
## AGGRESSIVE ENROLLMENT PROJECTIONS

North of the Interstate 5	2018	2019	2023
HS Capacity	4,733	4,733	4,933*
HS Enrollment	3,580	4,121	4,911
Open Seats	1,153	612	22
South of the Interstate 5	2018	2019	2023
HS Capacity	7,861	7,957	7,887
HS Enrollment	6,872	6,599	6,697
Open Seats	989	1,358	1,190

\* Northwood HS can be expanded to 2,600 capacity per Board Policy  
 Source: IUSD19Mod Enrollment Projections. (Creekside included)

Schools North of I-5	
Existing HS	2

Schools South of I-5	
Existing HS	4

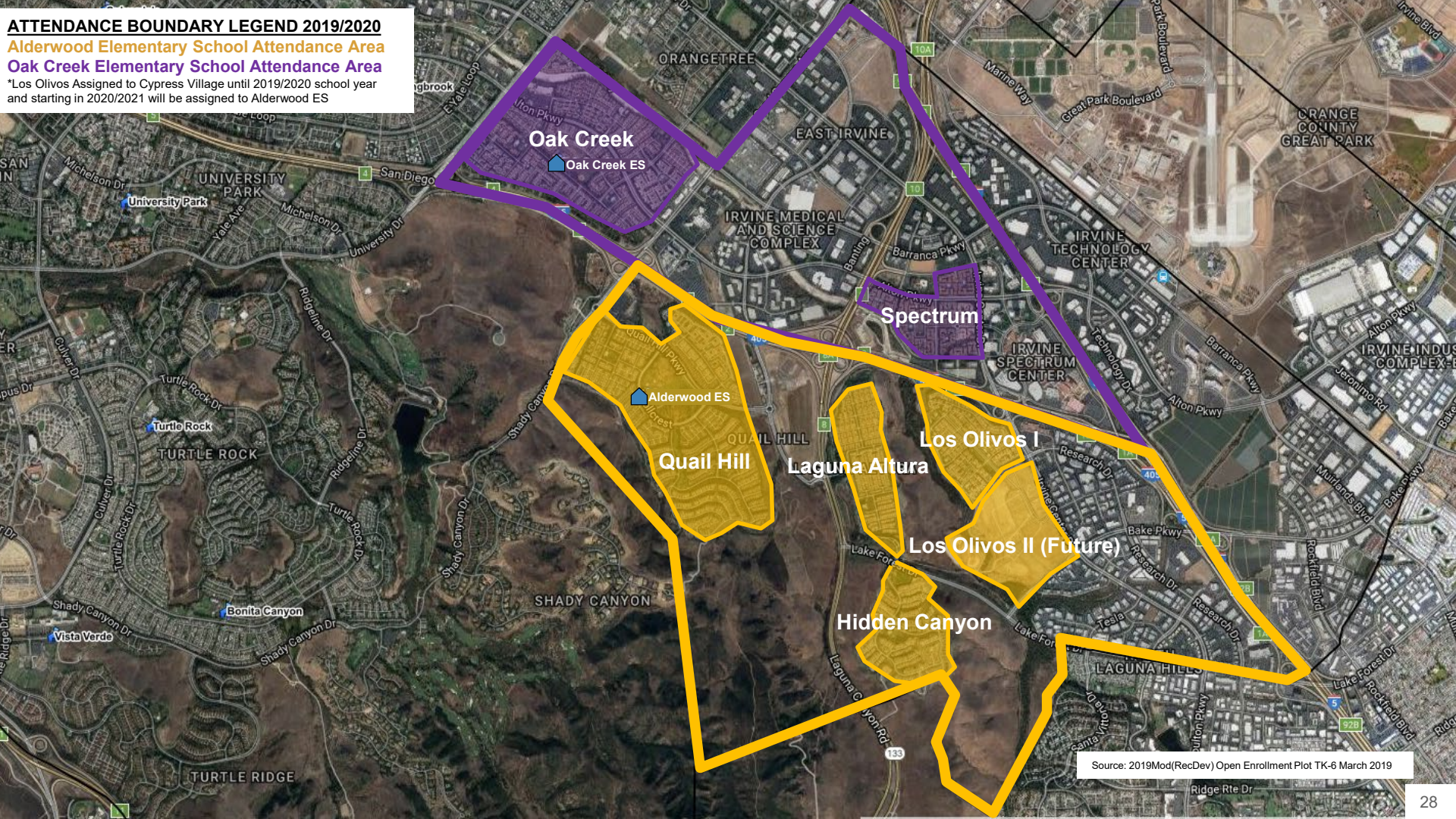




# COMMUNITY UPDATE ALDERWOOD AND OAK CREEK



**ATTENDANCE BOUNDARY LEGEND 2019/2020**  
**Alderwood Elementary School Attendance Area**  
**Oak Creek Elementary School Attendance Area**  
\*Los Olivos Assigned to Cypress Village until 2019/2020 school year  
and starting in 2020/2021 will be assigned to Alderwood ES







# COMMUNITY UPDATE ALDERWOOD AND OAK CREEK

## Alderwood ES Community Update

School	Capacity	CBEDS School Enrollment (Oct. 2018)	Current School Enrollment (Apr. 2019)
Alderwood ES	905	808	805

Community	CBEDS <b>Geographic</b> Enrollment (Oct. 2018)	Current <b>Geographic</b> Enrollment (Apr. 2019)
Quail Hill	644	641
Los Olivos	106	90
Laguna Altura	137	135
Hidden Canyon	64	61
Total	951	927

- Enrollment in **geographic** data may not align to actual school enrollment due to school choice and special programs.

# COMMUNITY UPDATE ALDERWOOD AND OAK CREEK

## Oak Creek ES Community Update

School	Capacity	CBEDS School Enrollment (Oct. 2018)	Current School Enrollment (Apr. 2019)
Oak Creek ES	1,001	892	903

Community	CBEDS <b>Geographic</b> Enrollment (Oct. 2018)	Current <b>Geographic</b> Enrollment (April 2019)
Oak Creek	796	789
Spectrum	252	251
Total	1,048	1,040

- Enrollment in **geographic** data may not align to actual school enrollment due to school choice and special programs.



# COMMUNITY UPDATE ALDERWOOD AND OAK CREEK

## Los Olivos/Spectrum Community Options:

- Maintain Current School Assignments
- Build School in Los Olivos



## OPTION: MAINTAIN CURRENT SCHOOL ASSIGNMENTS

### AGGRESSIVE SCHOOL PROJECTIONS

#### Alderwood Elementary School

School	2019 (1 Year Projection)	2023 (5 Year Projection)	2028 (10 Year Projection)
Alderwood ES	851	1,045	1,021

Draw Assumptions: Draws all new Los Olivos TK-6<sup>th</sup> grade

Program Assumptions: N/A

Current School Capacity: 905

#### Oak Creek Elementary School

School	2019 (1 Year Projection)	2023 (5 Year Projection)	2028 (10 Year Projection)
Oak Creek ES	905	1,002	1,013

Draw Assumptions: Closed K enrollment to Oak Creek attendance area

Program Assumptions: Special Education Program

Current School Capacity: 1,001





## ELEMENTARY SCHOOLS WITH STUDENT ENROLLMENT IN EXCESS OF 900

Current schools over 900 enrollment: As of April 2019

School	Student Enrollment
Cypress Village	1,063
Oak Creek	903
Portola Springs	1,056
Stonegate	1,057
Woodbury	1,130

Note: Turtle Rock reached an enrollment of 931 in 2014



## OPTION: OPEN SCHOOL IN LOS OLIVOS

### AGGRESIVE GEOGRAPHIC PROJECTIONS

#### Elementary School In Los Olivos

	2019 (1 Year Projection)	2023 (5 Year Projection)	2028 (10 Year Projection)
Los Olivos	100	232	236
Spectrum	252	271	264
Total	352	503	500

#### Alderwood Elementary School

Alderwood ES*	830	867	840
---------------	-----	-----	-----

#### Oak Creek Elementary School

Oak Creek ES	797	862	831
--------------	-----	-----	-----

Source: IUSD19Mod Recent Development Geographic Projections

\*Alderwood ES assumes Quail Hill and Laguna Altura/Hidden Canyon Communities



IRVINE UNIFIED  
SCHOOL DISTRICT



# STATE FUNDING UPDATE

## Acknowledged List

- Project applications submitted beyond the Prop 51 Bond Authority
- Subject to Resolution Acknowledging Exhaustion of Funds
- Waiting for future State Bond (2020/2022)



**Future IUSD projects will be placed on this list**

## Workload List

- Project applications submitted to OPSC, awaiting staff review
- Anticipate funding under Prop 51



**IUSD has 14 projects on this list totaling \$115,626,650\***

## Unfunded Approval List

- Project applications have been fully reviewed by OPSC staff
- Project waiting State Bond Sale
- Subject to Bi-Annual Priority Funding Letter

**IUSD has 3 projects on this list totaling \$193,417,728\***

## Apportioned List

- Project applications that were previously on the Unfunded Approval list
- Submitted Priority Funding Letter
- Shovel-Ready within 90 days of apportionment
- Ready for Fund Release request

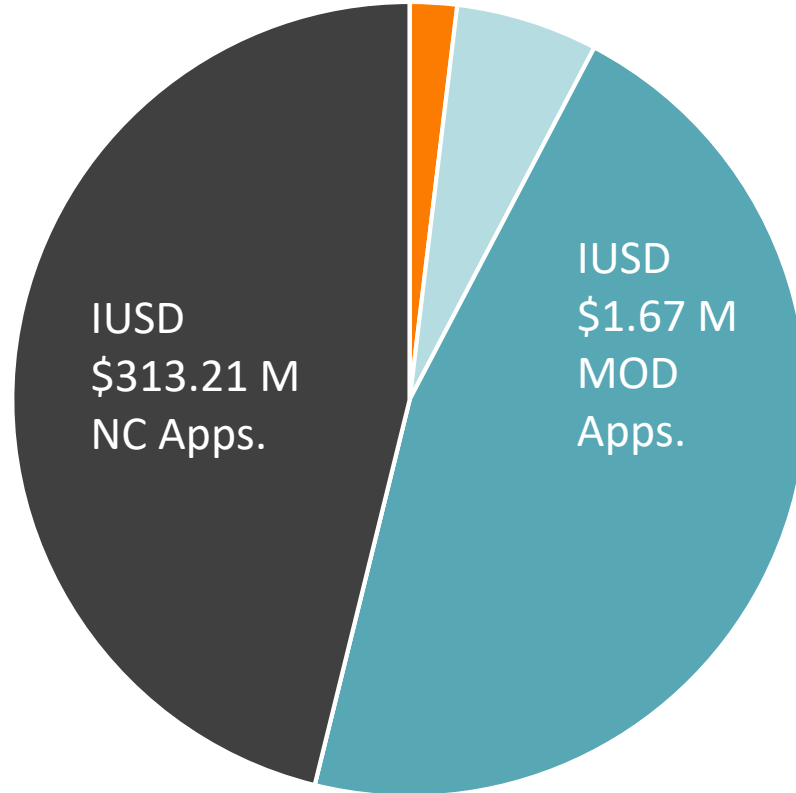
**IUSD has 1 project on this list totaling \$5,834,348\***

# STATE FUNDING – NON MEASURE E PROJECTS

## Summary of Statewide Workload List and Remaining Funds Totals\*

- CTE Approved \$124 M
- CTE Remaining \$375 M
- MOD Workload \$3 B
- MOD Remaining \$0
- NC Workload \$3 B
- NC Remaining \$0

\* As of 03.31.2019 OPSC Workload





# STATE FUNDING – NON MEASURE E PROJECTS

STATE FUNDED PROJECTS		
Site Name	Fund Release Date	Amount Received
Cypress Village ES (Original Construction)	01.16.2019	\$25,660,246
Northwood High School (Classroom Expansion)	01.16.2019	\$4,785,541
<b>Total State Funded Applications (Non Measure E)</b>		<b>\$30,445,787</b>

OPSC APPORTIONED LIST		
Site Name	Apportioned Date	Apportioned Amount
Irvine High School (Classroom Expansion)	04.24.2019	\$5,834,348
<b>Total State Funded Apportionments (Non Measure E)</b>		<b>\$5,834,348</b>

OPSC UNFUNDED LIST		
Site Name	SAB Approval Date	Amount Approved
Portola High School	03.27.2019	\$123,022,919
Portola Springs Elementary (Original Construction)	04.24.2019	\$30,701,042
Beacon Park School	04.24.2019	\$39,693,767
<b>Total State Funded Applications (Non Measure E)</b>		<b>\$193,417,728</b>

OPSC WORKLOAD LIST		
Site Name	50-04 Date Received	Estimated Funding
Northwood HS (Culinary Arts)	07.22.2015	\$453,283
Creekside HS (Culinary Arts)	07.22.2015	\$499,337
Jeffrey Trail MS (Villas)	08.05.2015	\$1,149,226
Cypress Village ES (Villas 2015)	08.05.2015	\$1,300,562
Portola Springs ES (Villas 2016)	06.01.2016	\$1,421,676
Cypress Village ES (Villas 2016)	08.01.2016	\$876,147
Eastwood ES	08.01.2016	\$29,402,726
Portola Springs ES (Villas 2017)	08.03.2017	\$948,994
Rancho MS (Music Classroom)	08.23.2017	\$331,928
Cadence Park School	09.06.2017	\$41,372,337
Loma Ridge ES	03.21.2018	\$33,872,655
Cypress Village ES (Relocatables 2018)	07.06.2018	\$1,394,110
Canyon View ES (Villas 2018) – NC	08.17.2018	\$932,595
Canyon View ES (Villas 2018) - MOD	08.17.2018	\$1,671,074
<b>Total State Funding Applications (Non-Measure E)</b>		<b>\$115,626,650</b>

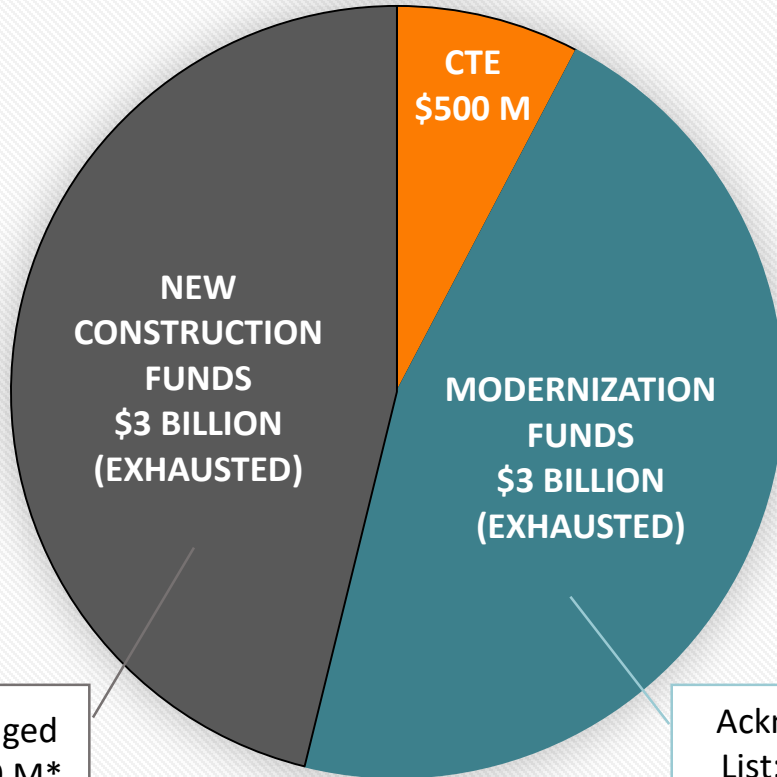
# STATE FUNDING – ESTIMATED FUND RELEASE TIMELINE

Site Name (Year Submitted to OPSC)	Funding Source	Estimated Fund Release
Irvine HS Expansion (2014)	CFD	June 2019
Portola HS (2015)	CFD/Developer	Jan – Mar 2020
Portola Springs ES (2015)	CFD	Jan – Mar 2020
Beacon Park School (2015)	Developer	Jan – Mar 2020
Northwood HS Culinary Arts (2015)	CFD	Jan – Mar 2020
Creekside HS Culinary Arts (2015)	CFD	Jan – Mar 2020
Jeffrey Trail MS Villas (2015)	CFD	Jan – Mar 2020
Cypress Village Villas (2015)	CFD	Jan – Mar 2020
Portola Springs Villas (2016)	CFD	Jun – Aug 2020
Eastwood ES (2016)	CFD	Jun – Aug 2020

## Assumptions:

- Two bond sales per year (Fall/Spring)
- \$750 M per bond sale
- Two months from fund release request to actual receipt of funds
- Assumes all projects listed would be on Lack of AB55 list as currently projected (no project bumping)

# STATE SCHOOL FACILITY PROGRAM – PROP 51



APPROVED BY CALIFORNIA VOTERS  
NOVEMBER 8, 2016

OTHER PROP 51

- \$500 M CHARTER SCHOOLS
- \$2 B COMMUNITY COLLEGE

Future State Bond:

→ AB48: March 2020 &  
November 2022 Ballots; \$TBD  
Currently in review

\*As of 03.31.2019 OPSC Workload



# SUSTAINABILITY PROGRAM OVERVIEW

## PROPOSITION 39: CALIFORNIA CLEAN ENERGY JOBS ACT

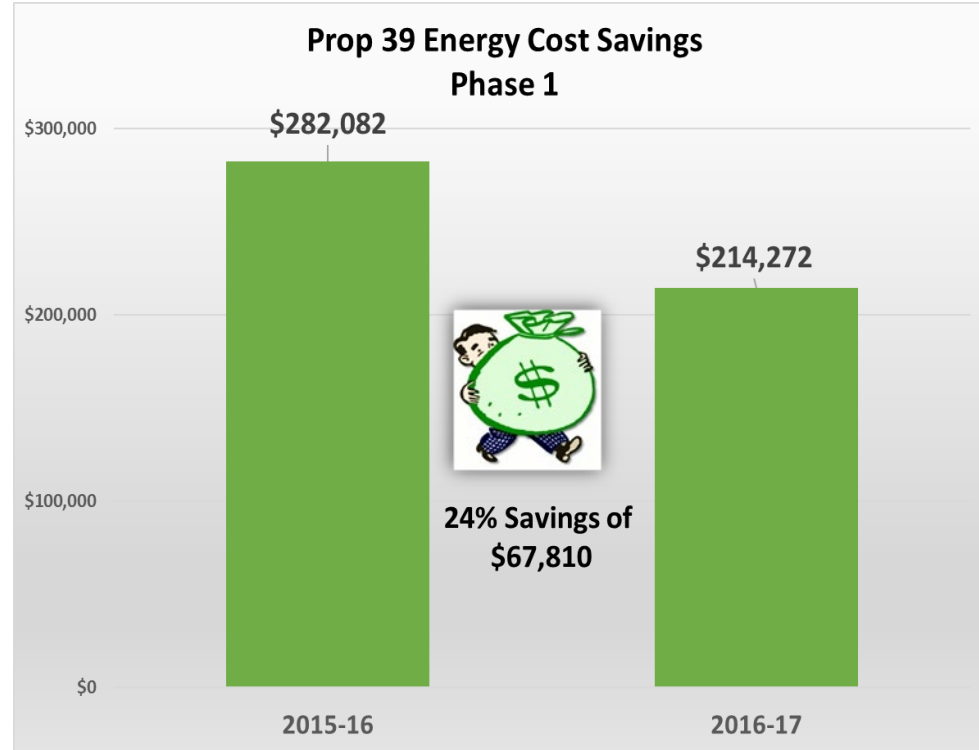
### Five Year State Program

- Initiated in 2013
- Funds allocated to local educational agencies for improving energy efficiency and creating clean energy jobs
- IUSD's 5 year allocation was \$6,592,066 with projects being completed in 3 phases



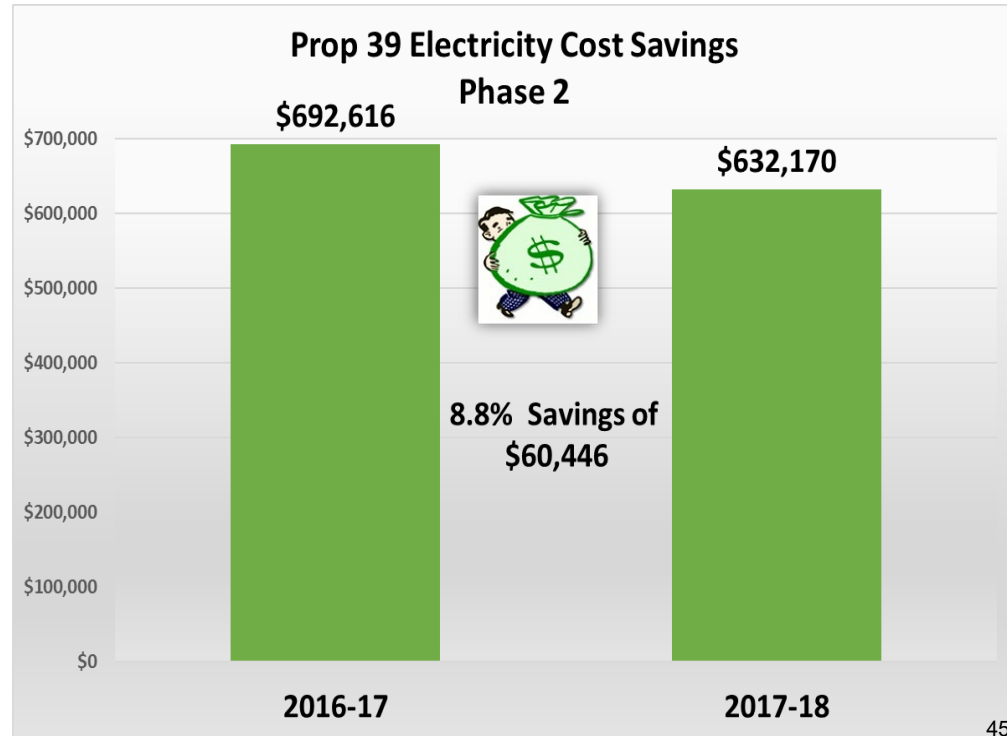
# PHASE 1 – SUMMER 2016

- Replaced 64 HVAC package units at University High
- Replaced 8 multi-zone HVAC units at Westpark
- Energy cost savings of **\$67,810** in the first year of implementation



## PHASE 2 – SUMMER 2017

- Replaced and retrofitted all interior and exterior lighting to LED technology at 9 District sites: University High, Westpark, Springbrook, Canyon View, Southlake, ECLC, District Office, Plaza Vista and Turtle Rock
- Electricity cost savings of **\$60,446** in the first year of implementation

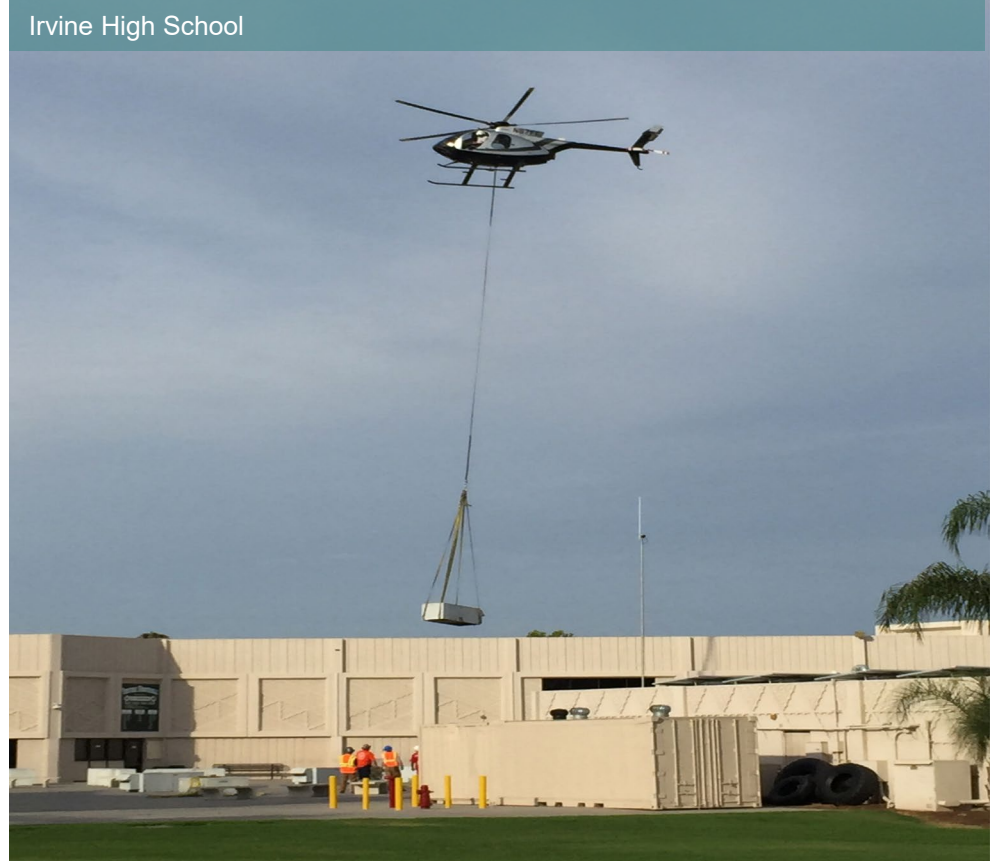


## PHASE 3 – SUMMER 2018

- Replaced 56 HVAC air handling units on the Science and Humanities Buildings at Irvine High
- Replaced and retrofitted all interior and exterior lighting to LED technology on the entire Irvine High campus
- Projected energy cost savings of **\$53,376** annually in the first year of implementation



Irvine High School



## TOTAL ENERGY COST SAVINGS OF ALL THREE PHASES

Phases	Energy Cost Savings	Comments
Phase 1	\$67,810	First year of implementation
Phase 2	\$60,446	First year of implementation
Phase 3	\$53,376	Projected to save in the first year of implementation
Total Estimated Savings	<b>\$181,632</b>	First year of implementation
Total Estimated Savings	<b>\$1,816,320</b>	Over 10 years

Note: Based on first year projections of all 3 phases

# SOLAR OVERVIEW



## CURRENT SOLAR OVERVIEW

### IUSD's Current Solar Portfolio:

#### 32 Solar Arrays at 26 Sites

- 17 Rooftop Installations
- 15 Carport Installations

**First System Activated in August 2010**

**6.9 Megawatts of Generating Capacity**

**\$1.6 Million in Avoided Costs since August 2010 (as of 6-30-18)**



# SOLAR SITES

## Current Rooftop and Carport Sites

Santiago Hills Elementary



Irvine High School



IRVINE UNIFIED  
SCHOOL DISTRICT

## FUTURE OF SOLAR IN IUSD

### New Master Power Purchase Agreement with Onyx Renewables

#### Summer 2019 Installations

- Eastwood (Carports)
- Cadence Park (Carports)

#### Fourth Quarter 2019 Installation

- Loma Ridge (Carports)

#### 3 New Solar Systems

- Adds 1.5 megawatts (MW) of production capacity
- **8.4-MW solar portfolio at 29 Sites**
- Ranked 10<sup>th</sup> largest solar portfolio in K-12 education in CA

Portfolio of sites without solar are being reviewed for potential solar installations customized for each site

# NEW SOLAR SITES

## Carport Sites

Cadence Park School



Eastwood Elementary



IRVINE UNIFIED  
SCHOOL DISTRICT



# NEW SOLAR SITES

## Carport Sites



IRVINE UNIFIED  
SCHOOL DISTRICT

# SUSTAINABLE LANDSCAPING



Drought-tolerant plants

Drip Irrigation

Weed Barrier

Automatic Irrigation  
Controllers

Flow Sensors

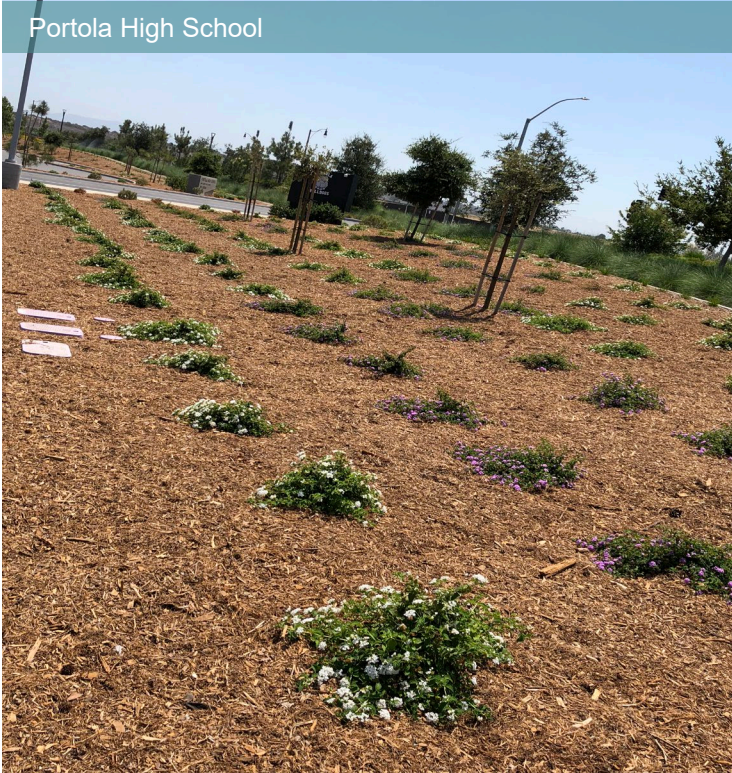
Master Valves



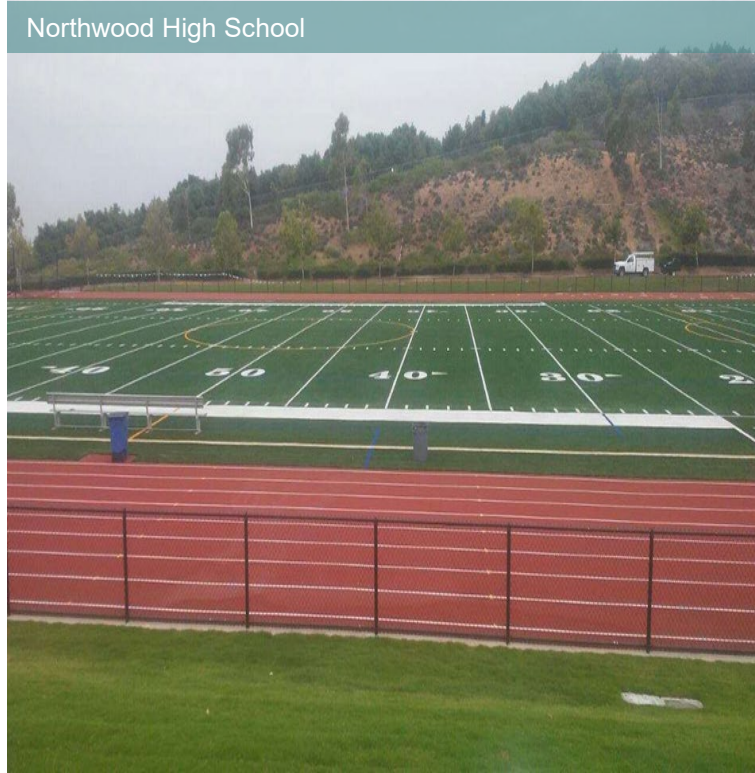


# SUSTAINABLE LANDSCAPING

Portola High School



Northwood High School



**Awarded \$174,590**  
in IRWD's Synthetic  
Turf Rebates



**Awarded \$6,608** in  
water-efficiency  
rebates for installing  
drip irrigation, flow  
sensors, and master  
valves





## ONGOING SUSTAINABILITY EFFORTS

## **IUSD Sustainable Landscaping Program**

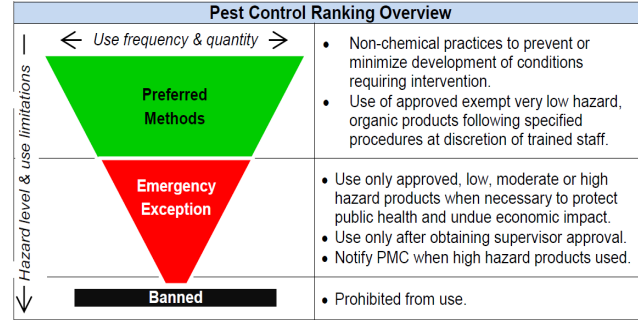
- Progressive Pest Management (PPM) Program
- **Organic** Landscape Management Program
- Automatic Irrigation Controls (100%)
- Flow sensors and master valves

## IUSD LED Lighting and Behavior Stickers

- Approximately 60% of the district sites have LED lighting



**IRVINE UNIFIED  
SCHOOL DISTRICT**



# ONGOING SUSTAINABILITY EFFORTS

## IUSD Textile Recycling

Since inception **12** schools have textile recycling bins  
Recycled a total of **78,319 lbs.** of textiles which  
equates to

- **187,965,600** gallons of water saved
- **196** Trees saved
- **1,174,785** lbs. of carbon emissions prevented
- **447** cubic yards of landfill space avoided



## IUSD Bottle Filling Station

Since inception **61** water bottle filling stations have  
been installed which equates to

- Approximately **600,000** plastic water bottles  
diverted from landfill



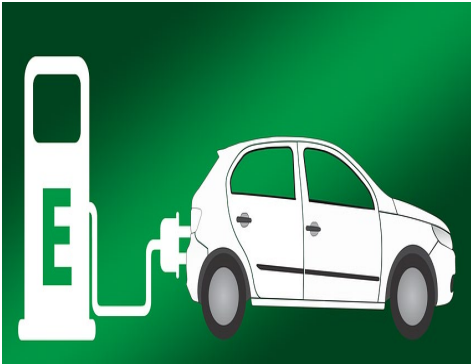
# DISTRICT SAVINGS/SUSTAINABILITY PROGRAMS

FY 2018-2019

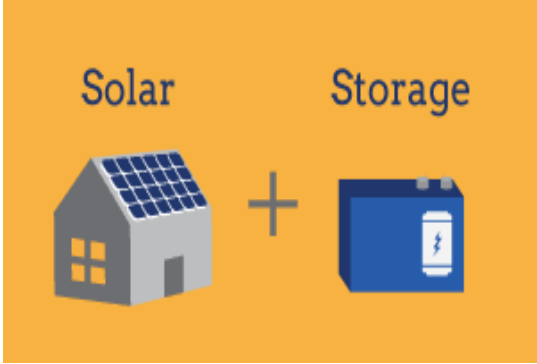
Program	Estimated Savings	Notes
SCE Rate Plan Review and Optimization Changes	\$276,130	<ul style="list-style-type: none"> <li>New Rate Plan Changes (March 1, 2019)</li> <li>TOU period changes to <b>4pm to 9pm</b>, instead of 12pm to 6pm</li> </ul>
IRWD Rebate Programs	\$181,199	Synthetic Turf, Drip-irrigation, Flow Sensors, Pressure Regulators Rebates
E-Waste Recycling Program	\$5,578	Based on FY 2017-2018 metrics
Textile Recycling Program	\$1,762	Based on FY 2017-2018 metrics
Surplus Furniture Recycling Program	\$10,147	Based on FY 2017-2018 metrics
Prop 39	\$229,817	SCE Rebate
<b>Total Estimated Savings</b>	<b>\$704,633</b>	

# FUTURE SUSTAINABILITY OPPORTUNITIES

## EV Charging Station



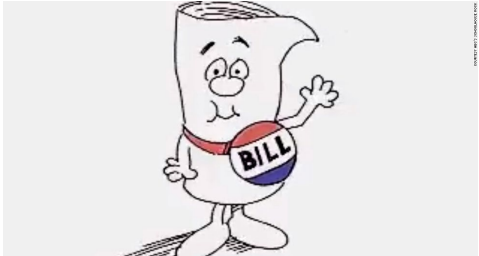
## Future Solar & Battery Storage



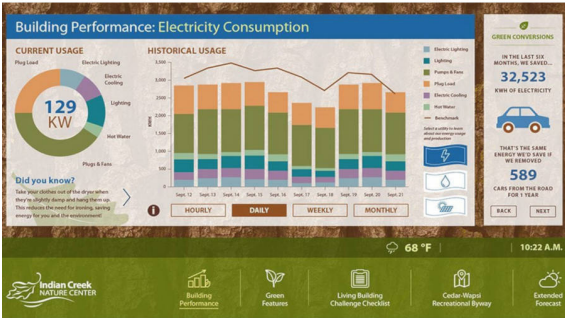
## Earth Day – Zero Waste Lunch



## AB 468 - The Children’s School Environmental Act



## TRANE - Energy Saving Opportunities





IRVINE UNIFIED  
SCHOOL DISTRICT

# PROJECT UPDATES



# PROJECTS IN PLANNING

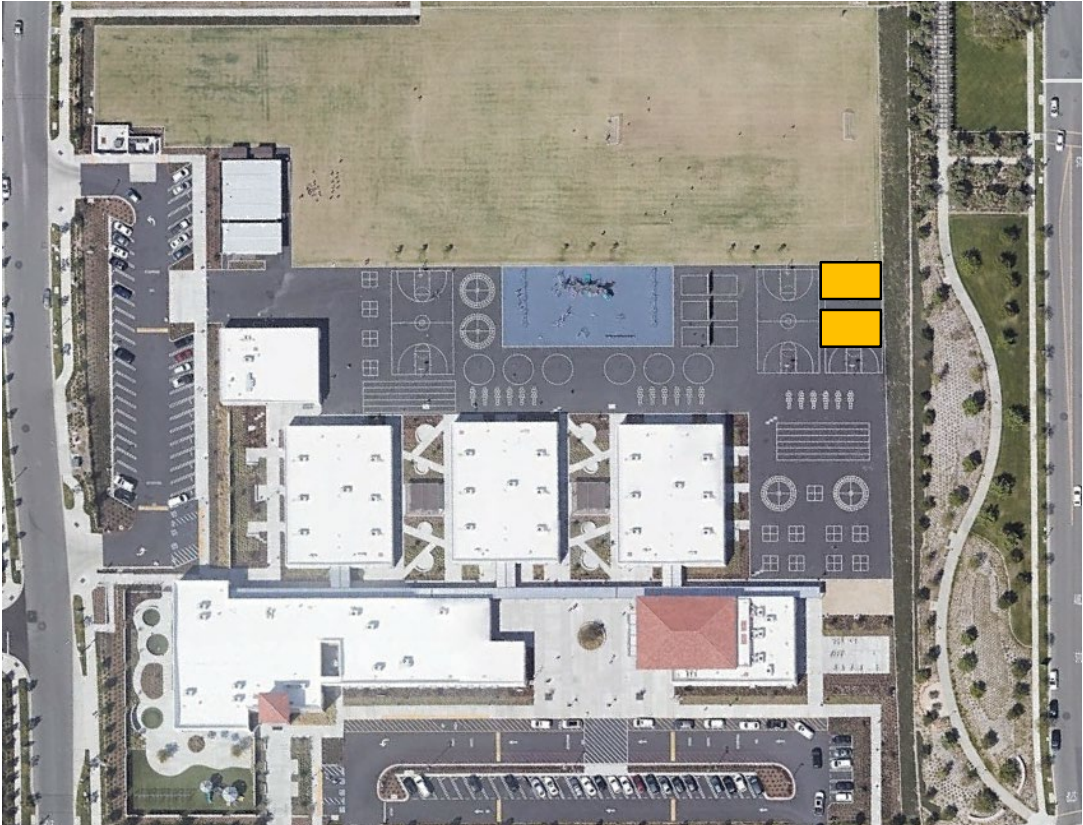




# EASTWOOD ES EXPANSION

## CURRENT PROJECTS IN PLANNING

Schedule	
Start	Finish
June 2019	August 2019

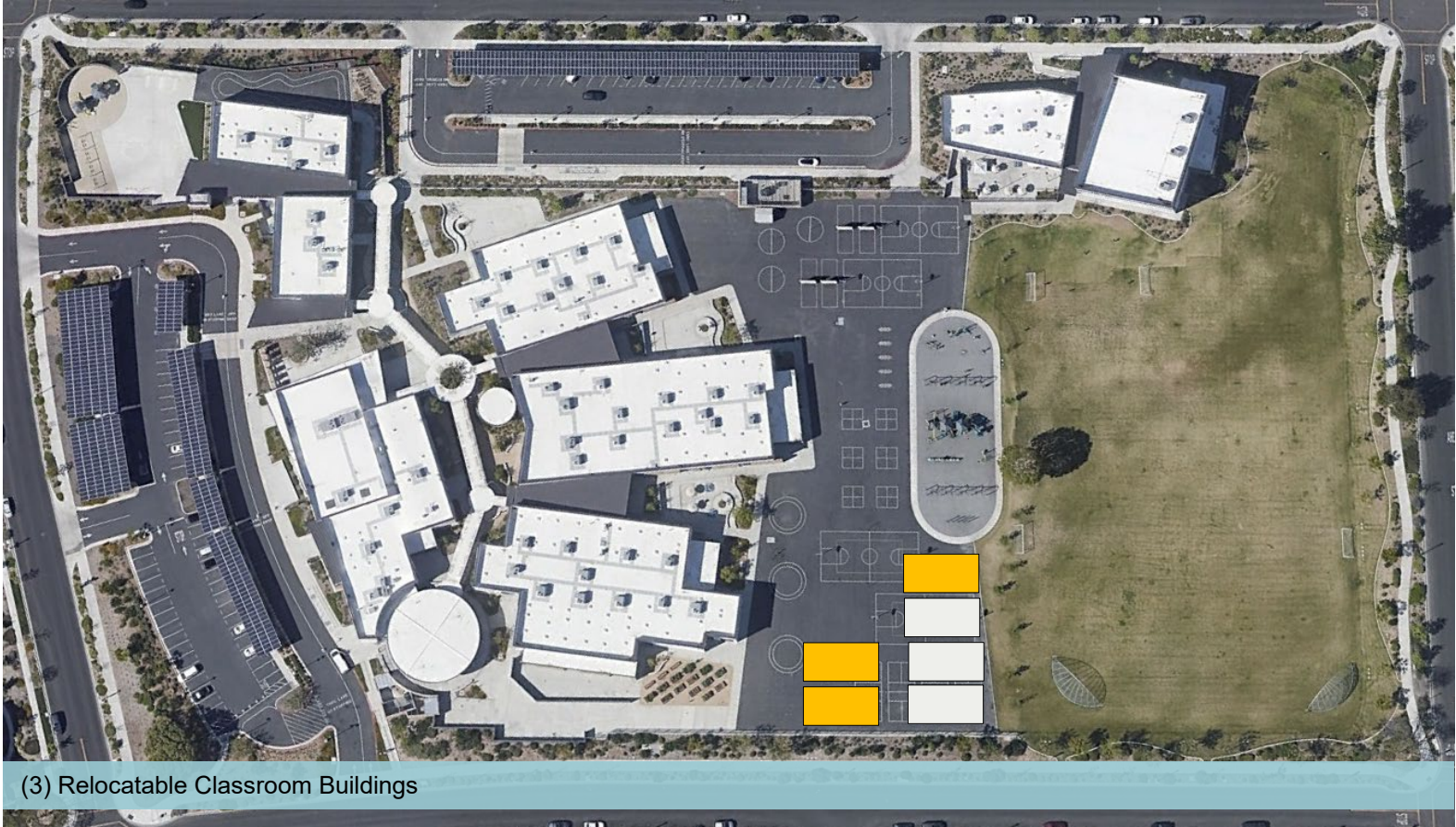


(2) Relocatable Classroom Building

# BEACON PARK SCHOOL EXPANSION

## CURRENT PROJECTS IN PLANNING

Schedule	
Start	Finish
June 2019	August 2019



(3) Relocatable Classroom Buildings



# HERITAGE FIELDS #3

## CURRENT PROJECTS IN PLANNING



Rendering of Heritage Fields #3 – Aerial View



# HERITAGE FIELDS #3

## CURRENT PROJECTS IN PLANNING



IRVINE UNIFIED  
SCHOOL DISTRICT



# HERITAGE FIELDS #3

## CURRENT PROJECTS IN PLANNING



Rendering of Heritage Fields #3 – Library Courtyard



# WESTWOOD TRAINING CENTER

## CURRENT PROJECTS IN PLANNING

Schedule	
Start	Finish
June 2019	August 2019

- General Training
- Ed Services Storage
- Special Ed Hearings/Training
- PLC (Small Group)
- Facilities Furniture Storage
- Innovation & Maker Spaces
- IT Tech
- Large Group Check in
- Induction Storage



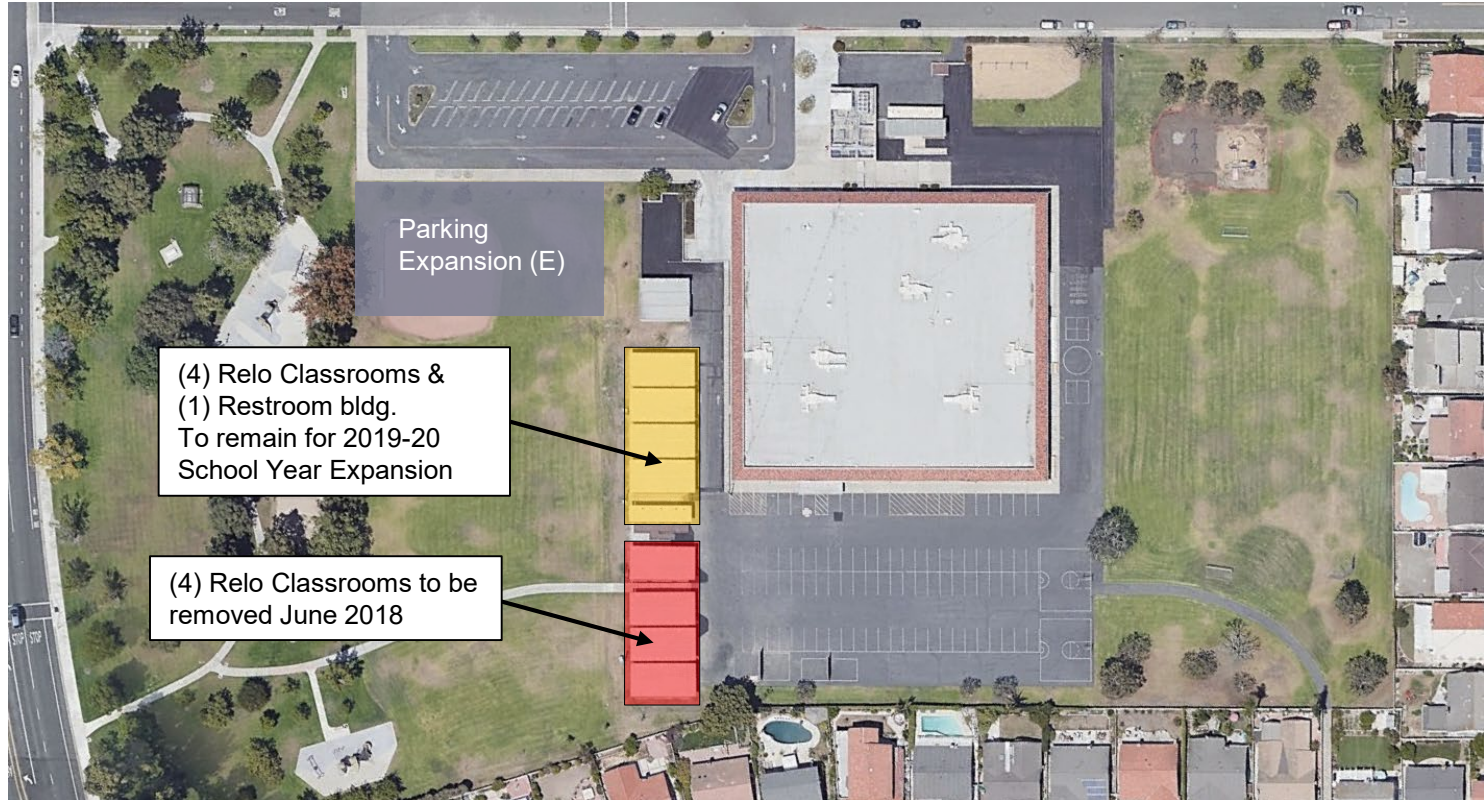


# INTERIM HOUSING PROJECT SPRINGBROOK ES AT EL CAMINO REAL ES

## CURRENT PROJECTS IN PLANNING

### Schedule

Start	Finish
June 2019	August 2019



# PROJECTS UNDER CONSTRUCTION



# LOMA RIDGE ES

## PROJECTS UNDER CONSTRUCTION



Administration Building



IRVINE UNIFIED  
SCHOOL DISTRICT

# LOMA RIDGE ES

## PROJECTS UNDER CONSTRUCTION



IRVINE UNIFIED  
SCHOOL DISTRICT



# LOMA RIDGE ES

## PROJECTS UNDER CONSTRUCTION



2 Story Classroom Building



IRVINE UNIFIED  
SCHOOL DISTRICT

# LOMA RIDGE ES

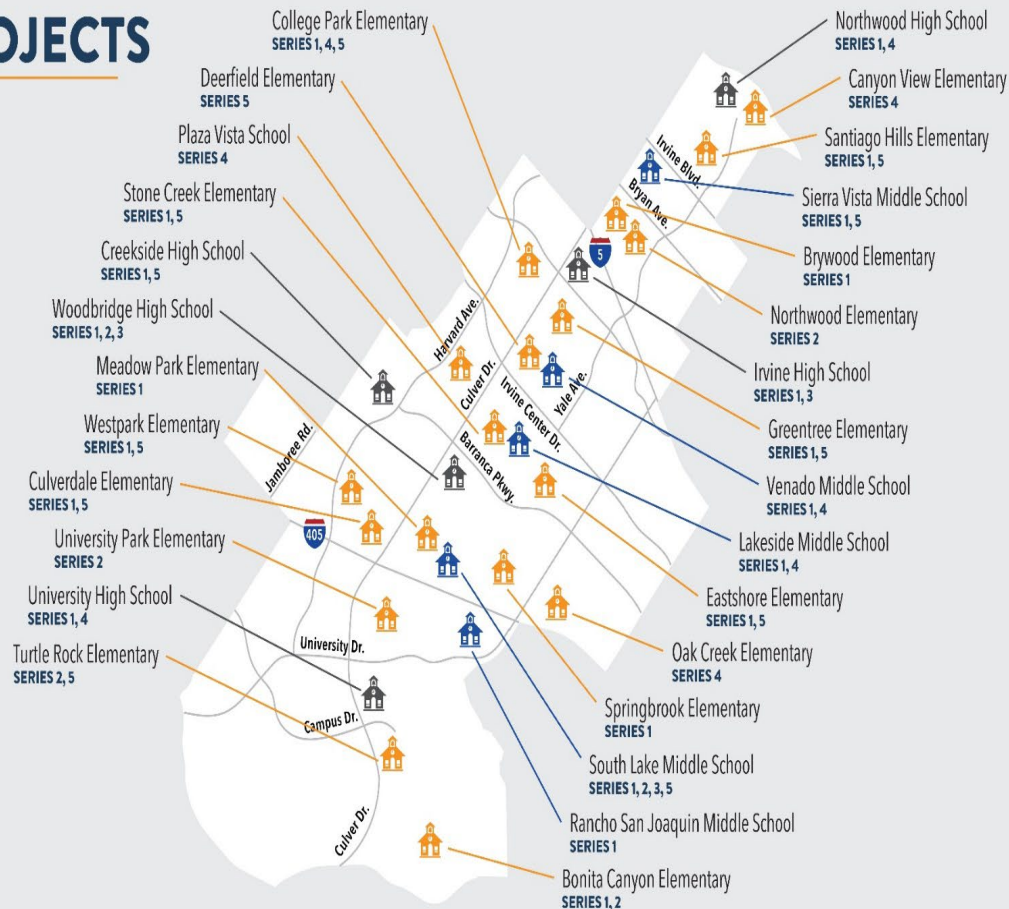
## PROJECTS UNDER CONSTRUCTION



IRVINE UNIFIED  
SCHOOL DISTRICT



# MEASURE E PROJECTS



**MEASURE E**  
**UPDATE- June 4, 2019**

# Questions?