



Irvine Unified School District

Measure E

Citizens Oversight Committee Meeting

November 2, 2020
(rescheduled from October 26, 2020)

Board of Education

Paul Bokota
Lauren Brooks
Betty Carroll, President
Ira Glasky
Sharon Wallin



AGENDA

- Budget
- State Funding
- Schedule
- Series 1 Project Updates
- Series 2 Project Updates
- AFAP Project Updates



Budget





Funding

Bond Measure E / District



MEASURE E FINANCING

- **Original Measure E Bond capacity based on annual Assessed Valuation growth within the SFID of 3% - 4.5% to be issued in four Series**
 - Yielding projected project funding of \$250.8 Million up to \$319.0 Million
 - Measure E initial budget set at \$250.8 Million
- **Annually review Assessed Valuation to determine growth and potential impact to bonding capacity**
- **Based on growth within the SFID, assumptions increased to annual Assessed Valuation growth of 3.5%**
 - Yielding projected project funding of \$272.3 Million up to \$319.0 Million
 - Increase number and frequency of Series from four to five



REVISED MEASURE E BOND SERIES (3.5% GROWTH)

- Series 1 funds received October 26, 2016
- Series 2 funds received September 13, 2018

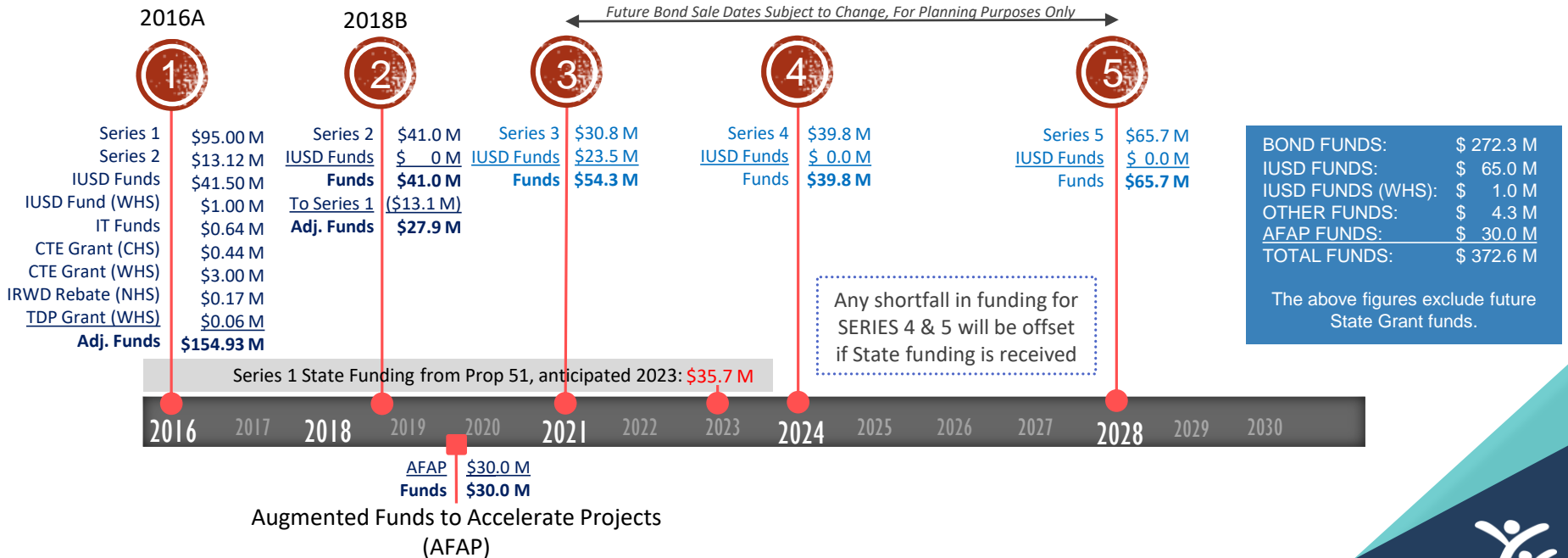
<u>ORIGINAL</u>	
2016 (Series 1)	\$ 95.0M
2021 (Series 2)	\$ 51.9M
2025 (Series 3)	\$ 49.4M
2029 (Series 4)	\$ 54.5M
<u>TOTAL</u>	<u>\$ 250.8M</u>

<u>ISSUED/PROPOSED</u>	
2016 (Series 1)	\$ 95.0M
2018 (Series 2)	\$ 41.0M
2021 (Series 3)	\$ 30.8M
2024 (Series 4)	\$ 39.8M
2028 (Series 5)	\$ 65.7M
<u>TOTAL</u>	<u>\$272.3M*</u>

*Maximum Bond Capacity is \$319.0M



FUNDING TIMELINE



CURRENT BONDS AND DISTRICT FUNDS



FUNDS COMMITTED (Series 1 , 2 and AFAP)	\$ 212,814,764
Series 1 Funds	\$ 154,930,259
Bond Series 2016A (Series 1)	\$ 95,000,000
Bond Series 2018B (Series 2)	\$ 13,115,495
District Funds (Funds 35, 40, and 86-1)	\$ 41,500,000
District Fund 40 (WHS Field Improvements)	\$ 1,000,000
IT Infrastructure (LAN Project)	\$ 643,875
State Grant (CTEFP ¹ - CHS)	\$ 439,400
State Grant (CTEFP ¹ - WHS)	\$ 3,000,000
Rebate (IRWD)	\$ 174,591
CalRecycle TDP ² Grant (WHS Field Improvements)	\$ 56,898
Series 2 Funds	\$ 27,884,505
Bond Series 2018B (Series 2)	\$ 27,884,505
AFAP Funds	\$ 30,000,000

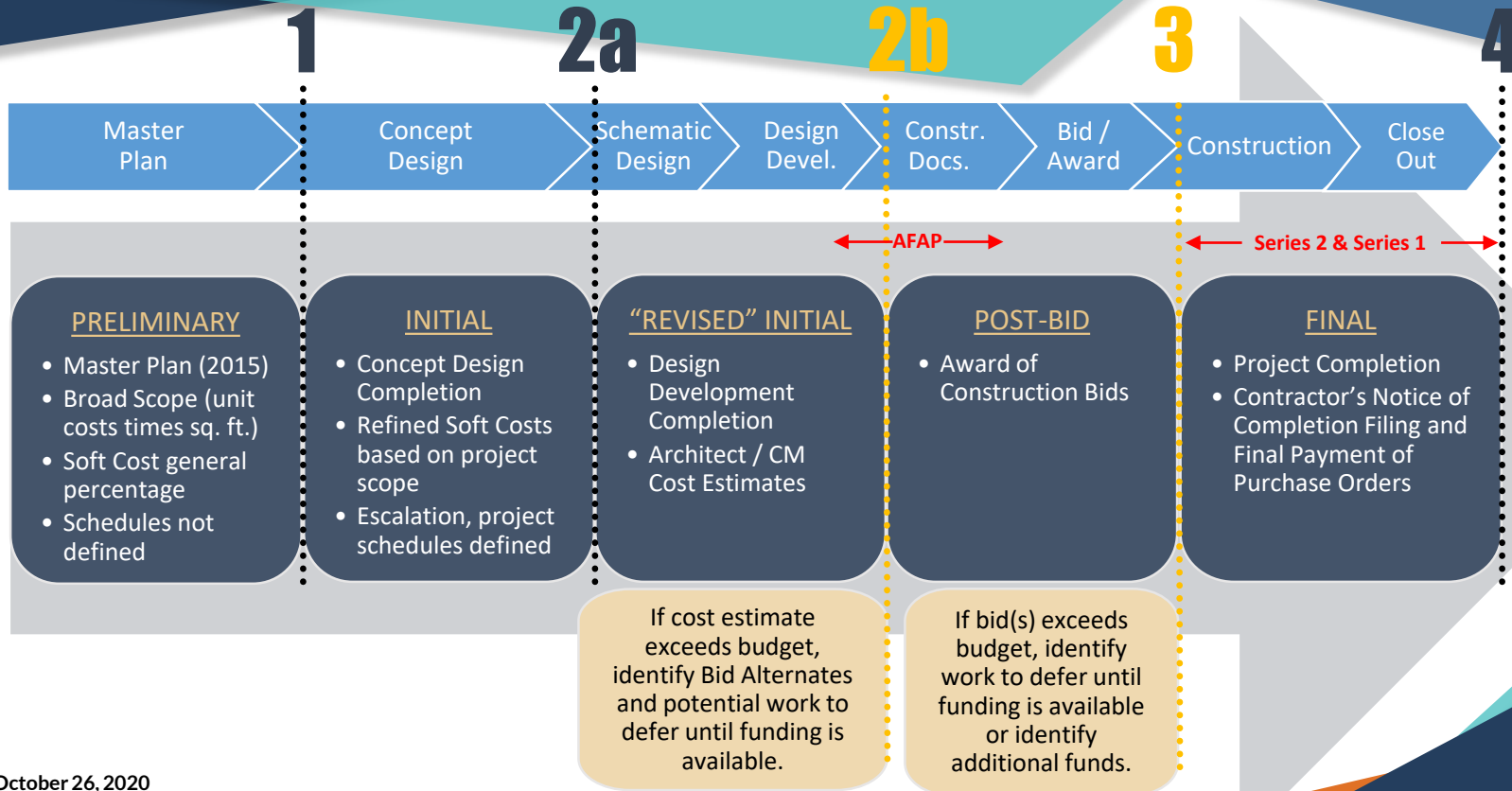
Notes: 1. CTEFP - Career Technical Education Facilities Program | 2. TDP - Tire-Derived Product

Budget

In Process / Final



BUDGET PROCESS



POST-BID BUDGET VERSUS FINAL BUDGET



Completed Projects*		Post-Bid Budget	Final Budget	Post-Bid & Final Budget Variance
1	Bonita Canyon ES - Enclose Classrooms	\$ 912,184	\$ 868,451	\$ 43,733
2	College Park ES - Enclose Classrooms	\$ 3,424,255	\$ 3,248,271	\$ 175,984
3	Creekside MS - Expansion	\$ 5,032,263	\$ 4,843,117	\$ 189,146
4	Culverdale ES - Enclose Classrooms	\$ 1,633,772	\$ 1,601,117	\$ 32,655
5	Eastshore ES - Expansion	\$ 6,132,736	\$ 6,080,570	\$ 52,166
6	Greentree ES - Enclose Classrooms	\$ 2,042,302	\$ 1,913,892	\$ 128,410
7	Irvine HS - Modernizatoin	\$ 7,143,636	\$ 6,922,265	\$ 221,371
8	Lakeside MS - Science Labs	\$ 2,972,572	\$ 2,892,181	\$ 80,391
9	Northwood HS - Field Improvements	\$ 3,815,212	\$ 3,692,908	\$ 122,304
10	Rancho San Joaquin MS - Science Labs	\$ 5,680,277	\$ 5,289,332	\$ 390,945
11	Santiago Hills ES - Enclose Classrooms	\$ 1,498,668	\$ 1,427,186	\$ 71,482
12	Sierra Vista MS - Science Lab	\$ 4,871,155	\$ 4,588,557	\$ 282,598
13	South Lake MS - Science Labs	\$ 3,759,011	\$ 3,557,805	\$ 201,206
14	Stone Creek ES - Enclose Classrooms/Expansion	\$ 4,423,481	\$ 4,295,488	\$ 127,993
15	University HS - Modernization	\$ 5,002,422	\$ 4,628,058	\$ 374,364
16	Venado MS - Science Labs	\$ 5,318,603	\$ 5,184,530	\$ 134,073
17	Westwood Basics Interim	\$ 509,966	\$ 411,938	\$ 98,028
*Represents 17 of the 32 current Measure E projects TOTALS		\$ 64,172,514	\$ 61,445,666	\$ 2,726,848



Budget

Series 1 Projects



FUND SUMMARY / FORECASTED BUDGET (Series 1)

Adjustment (10/26/2016)

Bond Series 1	\$	95,000,000
IUSD Funds	\$	29,600,000
IUSD Funds 1st Adj.	\$	6,800,000

FUNDS \$ 131,400,000

Adjustment (06/05/2018)

Bond Series 1	\$	95,000,000
IUSD Funds	\$	29,600,000
IUSD Funds 1st Adj.	\$	6,800,000

IUSD Funds 2nd Adj. \$ 5,100,000

IUSD IT Infrastructure \$ 643,875

CTE Grant (CHS) \$ 348,920

Bond Series 2 \$ 13,115,495

FUNDS Approved \$ 150,608,290

Current (10/26/2020)

Bond Series 1	\$	95,000,000
IUSD Funds	\$	29,600,000
IUSD Funds 1st Adj.	\$	6,800,000

IUSD Funds 2nd Adj. \$ 5,100,000

IUSD IT Infrastructure \$ 643,875

CTE Grant (CHS) \$ 439,400

Bond Series 2 \$ 13,115,495

IRWD Rebate (NHS) \$ 174,591

Fund 40 to WHS Field \$ 1,000,000

CTE Grant (WHS) \$ 3,000,000

TDP Grant (WHS) \$ 56,898

FUNDS Available \$ 154,930,259

CURRENT COMMITMENTS \$ 151,284,599

SURPLUS \$ 3,645,660



CURRENT PROJECT BUDGETS (Series 1)

✓ Enclose Classrooms (6 schools) Bonita Canyon ES, College Park ES, Culverdale ES, Greentree ES, Santiago Hills ES, Stone Creek ES	\$ 13,354,406
✓ High School Modernizations (2 schools) Irvine HS, University HS	\$ 11,550,323
✓ Expansions (2 schools) Eastshore ES, Creekside HS	\$ 10,923,687
✓ Elementary School Modernizations (4 schools) Brywood ES, Meadow Park ES, Springbrook ES, Westpark ES	\$ 46,360,048
✓ High School Field Improvements (2 schools) Northwood HS, Woodbridge HS	\$ 6,667,008
✓ Interim Campuses (2 schools) El Camino, Westwood Basics	\$ 1,642,665

✓ Construction complete, 17 of 28 Series 1 projects have a Final Budget



CURRENT PROJECT BUDGETS (Series 1)

<i>-continued-</i>	
✓ Middle School Science Classrooms (5 schools) Lakeside MS, Rancho San Joaquin MS, Sierra Vista MS, South Lake MS, Venado MS	\$ 21,512,405
✓ New Theater (1 school) Woodbridge HS	\$ 27,910,257
✓ Music Classroom Buildings (3 schools) Brywood ES, Meadow Park ES, Springbrook ES	\$ 9,756,819
✓ Program Costs	\$ 500,000
<hr/>	
Total Program Budget	
\$ 150,177,618	
Additional Commitments	
\$ 1,106,981	
<hr/>	
Current Commitments	
\$ 151,284,599	

✓ Construction complete, 17 of 28 Series 1 projects have a Final Budget



CONSTRUCTION CHANGE ORDERS (Series 1)



Final Change Order Percentages

School		Original Contract	Final Contract	Change Orders	Change Order %	School		Original Contract	Final Contract	Change Orders	Change Order %
1	Bonita Canyon ES	\$ 687,833	\$ 661,920	\$ (25,913)	-3.77%	13	Rancho San Joaquin MS	\$ 4,201,968	\$ 4,102,266	\$ (99,702)	-2.37%
2	College Park ES	\$ 1,947,472	\$ 1,997,707	\$ 50,235	2.58%	14	Westpark ES	\$ 7,535,025	\$ 7,612,852	\$ 77,827	1.03%
3	Culverdale ES	\$ 1,004,045	\$ 1,020,602	\$ 16,557	1.65%	15	Brywood ES - Mod	\$ 8,022,047	\$ 8,634,679	\$ 612,632	7.64%
4	Greentree ES	\$ 1,263,711	\$ 1,240,335	\$ (23,376)	-1.85%	16	Brywood ES - Music	\$ 2,842,214	\$ 2,773,341	\$ (68,873)	-2.42%
5	Santiago Hills ES	\$ 1,053,407	\$ 1,050,915	\$ (2,492)	-0.24%	17	Meadow Park ES - Mod	\$ 9,640,387	\$ 9,856,858	\$ 216,471	2.25%
6	Stone Creek ES	\$ 3,155,560	\$ 3,113,229	\$ (42,331)	-1.34%	18	Meadow Park ES - Music	\$ 2,889,679	\$ 2,838,289	\$ (51,390)	-1.78%
7	Northwood HS	\$ 2,946,419	\$ 3,055,203	\$ 108,784	3.69%	19	Eastshore ES	\$ 4,522,529	\$ 4,597,990	\$ 75,461	1.67%
8	Irvine HS	\$ 4,704,255	\$ 4,843,227	\$ 138,972	2.95%	20	Venado MS	\$ 3,798,615	\$ 3,813,274	\$ 14,659	0.39%
9	University HS	\$ 3,533,004	\$ 3,519,126	\$ (13,878)	-0.39%	21	Creekside HS	\$ 3,681,144	\$ 3,598,072	\$ (83,072)	-2.26%
10	Sierra Vista MS	\$ 3,643,560	\$ 3,526,896	\$ (116,664)	-3.20%	22	Springbrook ES- Mod	\$ 8,110,543	\$ 8,413,410	\$ 302,867	3.73%
11	South Lake MS	\$ 2,753,376	\$ 2,688,937	\$ (64,439)	-2.34%	23	Springbrook ES- Music	\$ 3,387,188	\$ 3,245,008	\$ (142,180)	-4.20%
12	Lakeside MS	\$ 2,279,702	\$ 2,214,866	\$ (64,836)	-2.84%	24	Woodbridge HS-Field Imp	\$ 2,568,204	\$ 2,651,706	\$ 83,502	3.25%
TOTALS								\$90,171,887	\$91,070,708	\$898,821	1.00%



Budget

Series 2 Projects



FUND SUMMARY / FORECASTED BUDGET (Series 2)

- Series 2 Projects

- Group 1 (Bonita Canyon ES and Turtle Rock ES) Under Construction
- Group 2 (Northwood ES and University Park ES) Bids received October 22, 2020

Initial Budget (01/09/2019)	
Bond Series 2	\$ 41,000,000
Funds Transferred to Series 1	\$ (13,115,495)
IUSD Funds	\$ -
FUNDS	\$ 27,884,505
CURRENT BUDGET	\$ 25,600,730
SURPLUS	\$ 2,283,775

Initial & Post-Bid Budgets (10/26/2020)*	
Bond Series 2	\$ 41,000,000
Funds Transferred to Series 1	\$ (13,115,495)
IUSD Funds	\$ -
FUNDS	\$ 27,884,505
CURRENT BUDGET	\$ 31,215,068
DEFICIT	\$ (3,330,563)
SURPLUS (Series 1)	\$ 3,645,660
SURPLUS	\$ 315,097

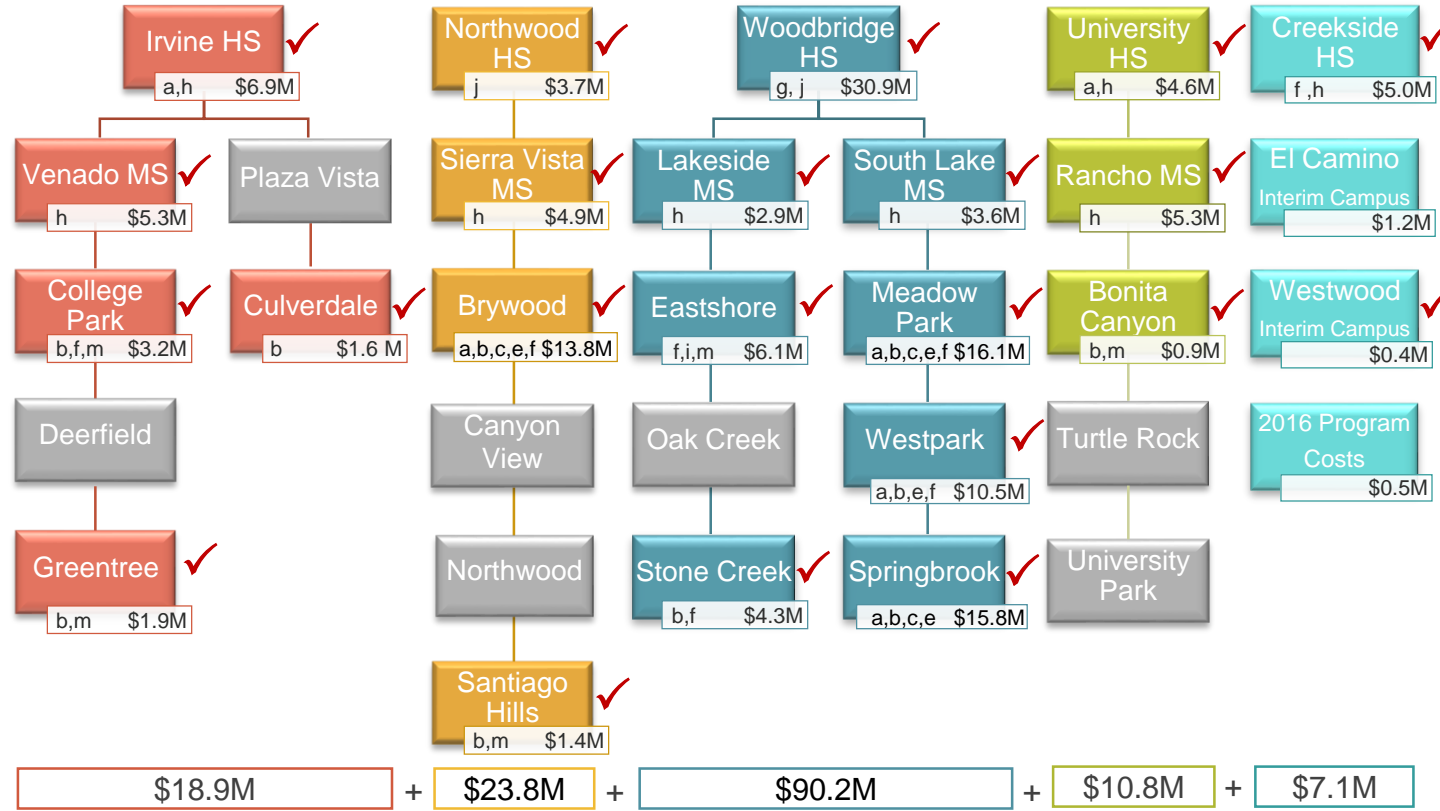
* Includes Post-Bid Budgets for two of the four projects.





Budget Bond Series Overview





PROJECT TYPES

- a. Modernize facilities over 25 yrs of age
- b. Enclose open classrooms
- c. Construct Music Classrooms
- d. Construct Multipurpose Room
- e. Construct/Upgrade Food Service
- f. Construct Career Tech and Innovation/Design Labs
- g. Construct Visual and Performing Arts, Media Arts Elective Labs and New/Upgrade Theaters
- h. Construct/upgrade science labs and Elective Spaces
- i. Construct/Upgrade Kinder Classroom
- j. Construct all weather track and field
- k. Construct Classrooms to replace portables
- l. Construct Practice Gym
- m. Construct/Upgrade Site Specific Support Facilities

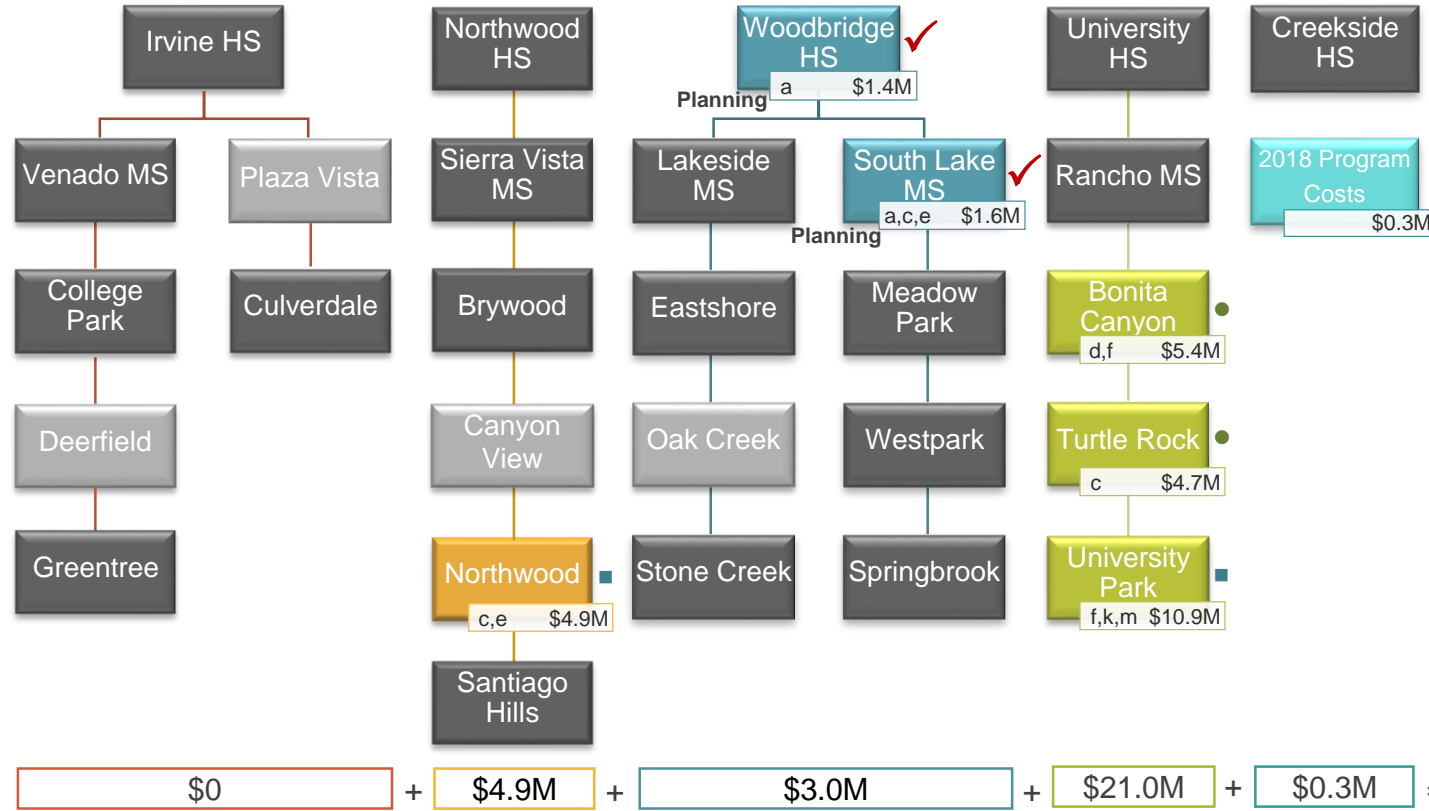
- Under construction
- In design
- ◆ Waiting for Bond sale

Series 1 Funds	\$154.9M
Series 1 Costs	\$150.8M
Surplus	\$4.1M

NOTE: Schools organized by region, not by feeder schools

Measure E Series 1 Projects and Costs

Bond Sale in 2016A



NOTE: Schools organized by region, not by feeder schools

PROJECT TYPES

- Modernize facilities over 25 yrs of age
- Enclose open classrooms
- Construct Music Classrooms
- Construct Multipurpose Room
- Construct/Upgrade Food Service
- Construct Career Tech and Innovation/Design Labs
- Construct Visual and Performing Arts, Media Arts Elective Labs and New/Upgrade Theaters
- Construct/upgrade science labs and Elective Spaces
- Construct/Upgrade Kinder Classroom
- Construct all weather track and field
- Construct Classrooms to replace portables
- Construct Practice Gym
- Construct/Upgrade Site Specific Support Facilities

- Under construction
- In design
- ◆ Waiting for Bond sale

Series 2 Funds	\$27.9M
Series 2 Costs	\$29.2M

Deficit <\$3.3M>

Surplus (Series 1) \$3.6M

Surplus \$0.3M

Measure E Series 2 1 Projects and Costs

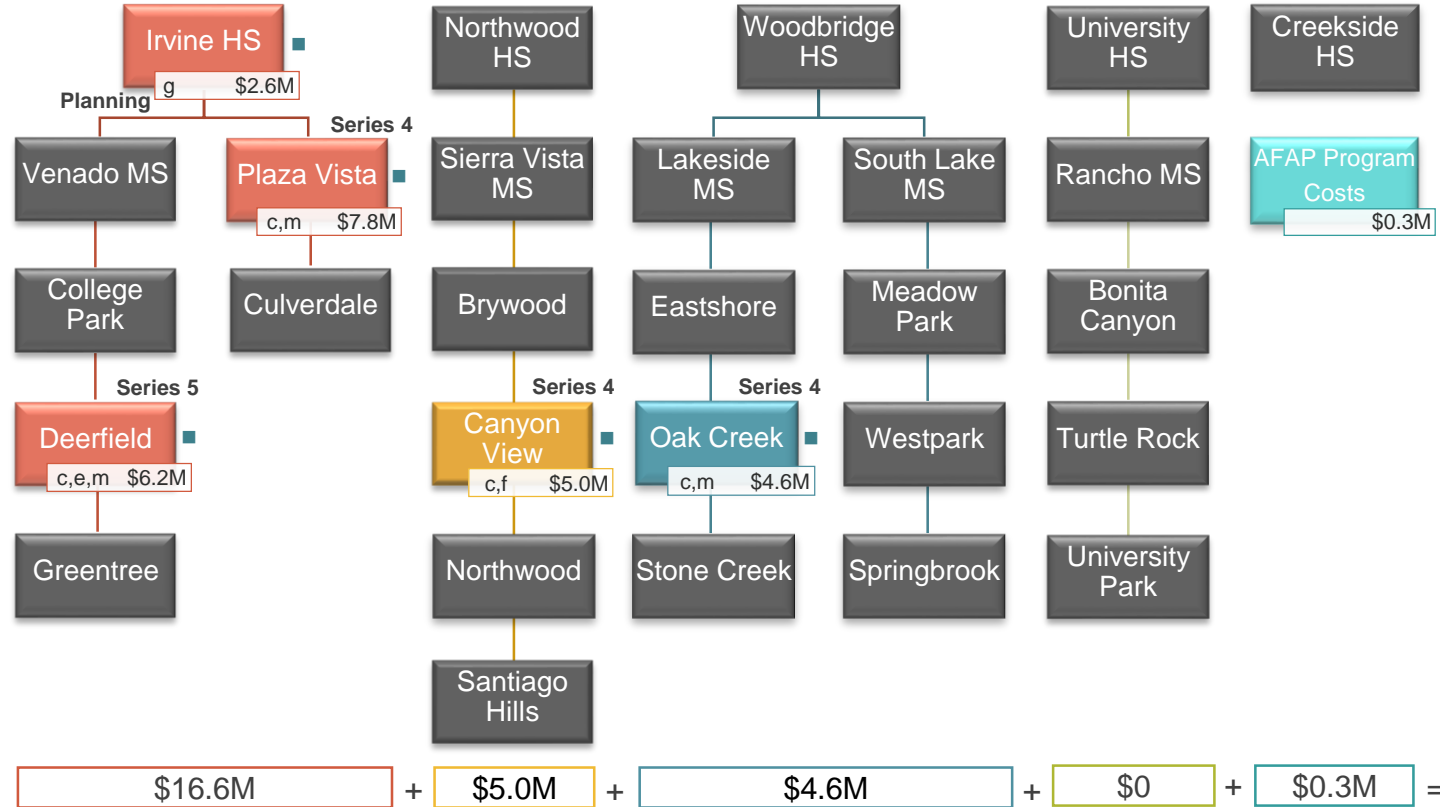
Bond Sale in 2018B

PROJECT TYPES

- Modernize facilities over 25 yrs of age
- Enclose open classrooms
- Construct Music Classrooms
- Construct Multipurpose Room
- Construct/Upgrade Food Service
- Construct Career Tech and Innovation/Design Labs
- Construct Visual and Performing Arts, Media Arts Elective Labs and New/Upgrade Theaters
- Construct/upgrade science labs and Elective Spaces
- Construct/Upgrade Kinder Classroom
- Construct all weather track and field
- Construct Classrooms to replace portables
- Construct Practice Gym
- Construct/Upgrade Site Specific Support Facilities

- Under construction
- In design
- ◆ Waiting for Bond sale

AFAP Funds	\$30.0M
AFAP Costs	\$26.5M
Surplus	\$3.5M



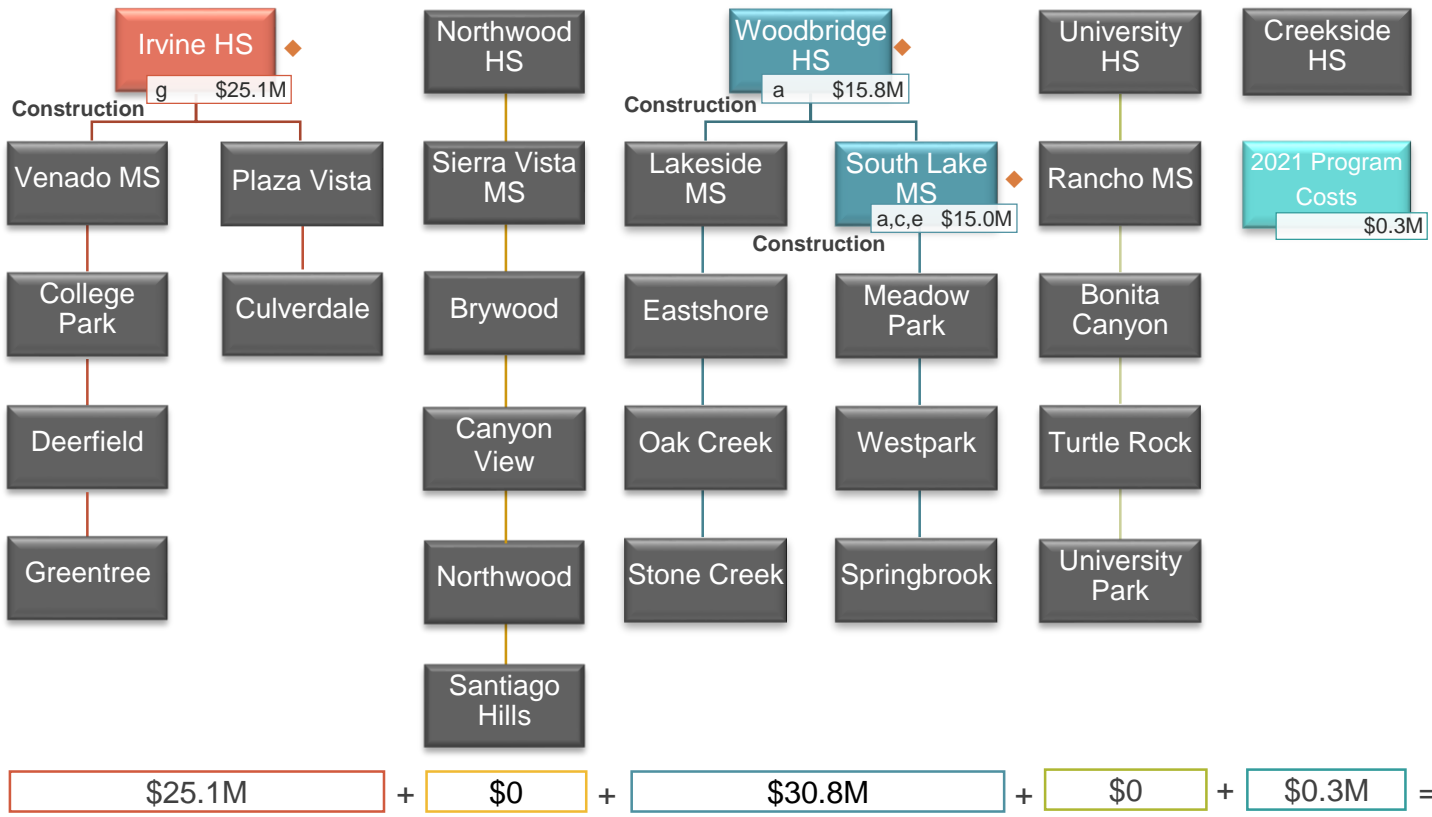
NOTE: Schools organized by region, not by feeder schools

PROJECT TYPES

- a. Modernize facilities over 25 yrs of age
- b. Enclose open classrooms
- c. Construct Music Classrooms
- d. Construct Multipurpose Room
- e. Construct/Upgrade Food Service
- f. Construct Career Tech and Innovation/Design Labs
- g. Construct Visual and Performing Arts, Media Arts Elective Labs and New/Upgrade Theaters
- h. Construct/upgrade science labs and Elective Spaces
- i. Construct/Upgrade Kinder Classroom
- j. Construct all weather track and field
- k. Construct Classrooms to replace portables
- l. Construct Practice Gym
- m. Construct/Upgrade Site Specific Support Facilities

- Under construction
- In design
- ◆ Waiting for Bond sale

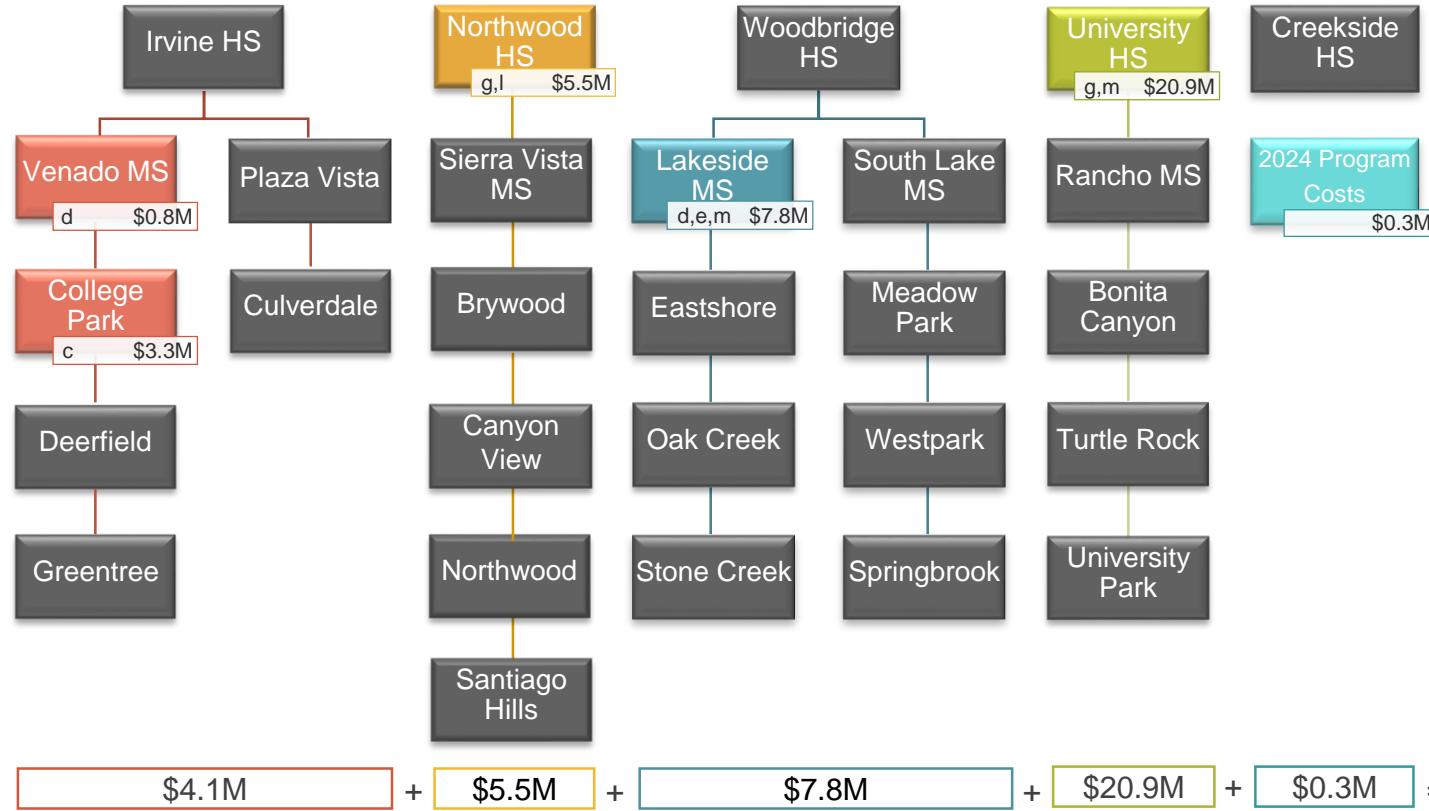
Series 3 Funds	\$54.3M
Series 3 Costs	\$56.2M
Deficit	<\$1.9M>



NOTE: Schools organized by region, not by feeder schools

Measure E Series 3 1 Projects and Costs

Pending Bond Sale Projected



PROJECT TYPES

- a. Modernize facilities over 25 yrs of age
- b. Enclose open classrooms
- c. Construct Music Classrooms
- d. Construct Multipurpose Room
- e. Construct/Upgrade Food Service
- f. Construct Career Tech and Innovation/Design Labs
- g. Construct Visual and Performing Arts, Media Arts Elective Labs and New/Upgrade Theaters
- h. Construct/upgrade science labs and Elective Spaces
- i. Construct/Upgrade Kinder Classroom
- j. Construct all weather track and field
- k. Construct Classrooms to replace portables
- l. Construct Practice Gym
- m. Construct/Upgrade Site Specific Support Facilities

- Under construction
- In design
- ◆ Waiting for Bond sale

Series 3 Funds	\$39.8M
Series 3 Costs	\$38.6M
Surplus	\$1.2M

NOTE: Schools organized by region, not by feeder schools

Measure E Series 4 1 Projects and Costs

Pending Bond Sale Projected

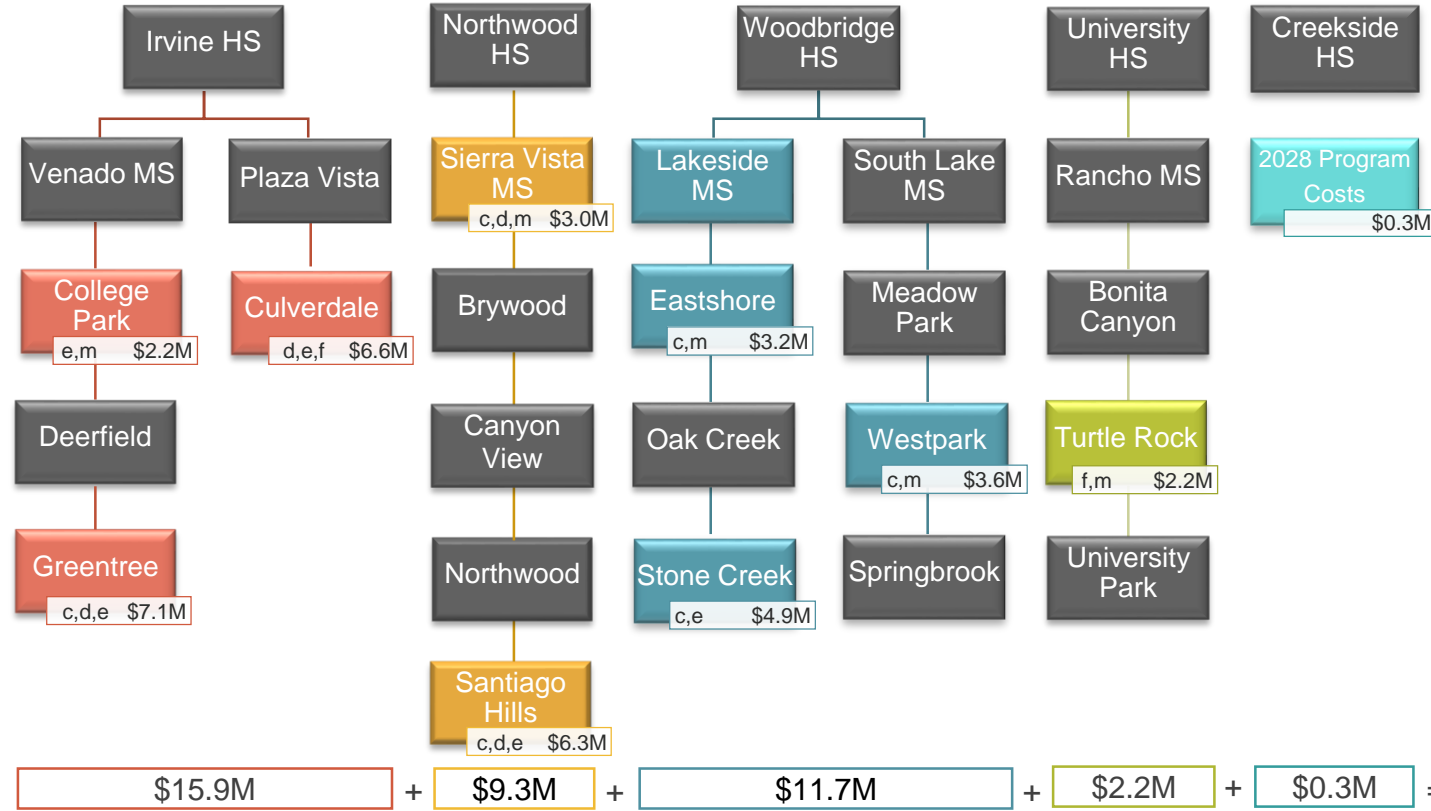


PROJECT TYPES

- a. Modernize facilities over 25 yrs of age
- b. Enclose open classrooms
- c. Construct Music Classrooms
- d. Construct Multipurpose Room
- e. Construct/Upgrade Food Service
- f. Construct Career Tech and Innovation/Design Labs
- g. Construct Visual and Performing Arts, Media Arts Elective Labs and New/Upgrade Theaters
- h. Construct/upgrade science labs and Elective Spaces
- i. Construct/Upgrade Kinder Classroom
- j. Construct all weather track and field
- k. Construct Classrooms to replace portables
- l. Construct Practice Gym
- m. Construct/Upgrade Site Specific Support Facilities

- Under construction
- In design
- ◆ Waiting for Bond sale

Series 5 Funds	\$65.7M
Series 5 Costs	\$39.4M
Surplus	\$26.3M

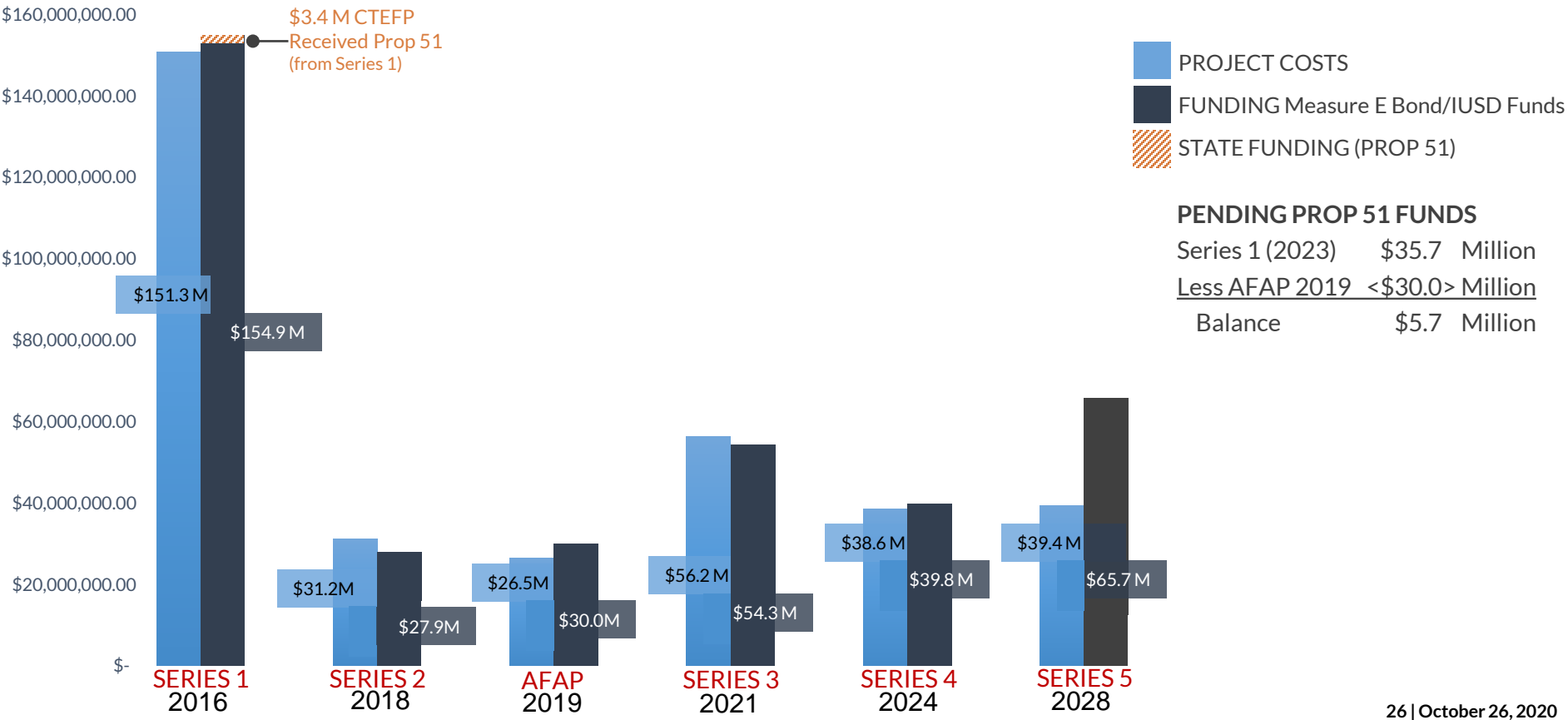


NOTE: Schools organized by region, not by feeder schools

Measure E Series 5 1 Projects and Costs

Pending Bond Sale Projected

MEASURE E BY SERIES: PROJECT COST VS FUNDING



State Funding





Step 1a: “Acknowledged” List

When no State Funding is available

- Project applications submitted beyond the Proposition 51 Bond Authority
- Subject to IUSD Board Resolution acknowledging exhaustion of funds
- *Waiting for future State Bond (2020/2022)*

Series 1 has 3 projects on this list totaling \$837,116

Step 1b: “Workload” List

When State Funding is available

- Project applications submitted to OPSC, waiting for staff review
- *Anticipate funding under Proposition 51 (by 2023)*

Series 1 has 20 projects on this list totaling \$34,878,828



Step 2: “Unfunded (Lack of AB 55)” List

- Project applications have been fully reviewed by OPSC staff
- Subject to bi-annual Priority Funding Letter
- *Project waiting for State Bond sale (Fall 2020) funding under Proposition 51*

Series 1 has 3 projects on this list totaling \$1,937,698

Step 3: “Apportioned” List

- Project applications that were previously on the Unfunded (Lack of AB 55) list
- Submitted bi-annual Priority Funding Letter
- Shovel-Ready within 90 days of moving to Apportioned list
- *Ready for fund Release request funding under Proposition 51*

Series 1 has 0 projects on this list

STATE FUNDING – MEASURE E PROJECTS



STEP 1A: ACKNOWLEDGED LIST

Site Name	Estimated Funding
Bonita Canyon ES (Series I: MOD)	\$152,715
Greentree ES (Series I: MOD)	\$249,055
Lakeside MS (Series I: MOD)	\$435,346
Total State Funding Applications	\$837,116

STEP 2: OPSC UNFUNDED LIST

Site Name	Estimated Funding
College Park ES (Series 1: MOD)	\$527,914
Culverdale ES (Series 1: MOD)	\$784,679
Santiago Hills ES (Series 1: MOD)	\$625,105
Total State Funding Applications	\$1,937,698

STATE FUNDED PROJECTS (Prop. 51)

Site Name	Amount Received
Creekside High School (Series 1 CTEFP: Construction Technology)	\$439,400
Woodbridge High School (Series 1 CTEFP: Performing Arts Center)	\$3,000,000
Total State Funded Applications	\$3,439,400

STEP 1B: OPSC WORKLOAD LIST

Site Name	Estimated Funding
Stone Creek ES (Series 1: MOD)	\$1,411,210
Stone Creek ES (Series 1: NC)	\$681,602
Irvine HS (Series 1: MOD)	\$3,874,257
University HS (Series 1: MOD)	\$654,092
Creekside HS (Series 1: NC)	\$1,579,717
Sierra Vista MS (Series 1: NC)	\$1,572,100
South Lake MS (Series 1: NC)	\$870,227
Eastshore ES (Series 1: MOD)	\$694,305
Springbrook ES (Series 1: MOD)	\$3,097,577
Westpark ES (Series 1: MOD)	\$3,415,758
Eastshore ES (Series 1: NC)	\$835,854
Venado MS (Series 1: NC)	\$2,231,969
Rancho San Joaquin MS (Series 1: MOD)	\$543,617
Rancho San Joaquin MS (Series 1: NC)	\$1,108,967
Brywood ES (Series 1: MOD)	\$2,870,668
Woodbridge HS (Series 1: NC)	\$3,041,419
Springbrook ES (Series 1: NC)	\$1,626,156
Meadow Park ES (Series 1: NC)	\$1,149,109
Brywood ES (Series 1: NC)	\$1,094,082
Meadow Park ES (Series 1: MOD)	\$2,526,142
Total State Funding Applications	\$34,878,828

Grants funds are through State School Facility Program, currently under Proposition 51

Schedule



CURRENT SCHEDULE (Series 1, Series 2, AFAP)



2020

2021

2022

Bonita Canyon ES and Turtle Rock ES

Construction

Late Spring 2021

SERIES 2

Northwood ES and University Park ES

Mobilize

Construction

Summer 2022

South Lake MS and Woodbridge HS

DSA approved

Construction start based on Series 3 Bond Sale

Canyon View ES, Deerfield ES, Oak Creek ES and Plaza Vista School

Design / DSA

Bid

Construction

Summer 2022

AFAP

Irvine HS

Design / DSA

Construction start based on Series 3 Bond Sale

Recently Completed

Series 1 Projects



SPRINGBROOK ES (Modernization)



Collaboration and Classroom (typical)



Design Lab



Breakout space (typical two locations)

Innovation Lab





Classroom (Typical)

Corridor with Offices



SPRINGBROOK ES (New Classroom Building / Site)



Music Classroom Building

Exterior ADA Improvements



WOODBIDGE HS (New Performing Arts Complex)



Main Entrance, Ticket Booth (foreground)

View from Alton Parkway



WOODBIDGE HS (New Performing Arts Complex)



First Floor Lobby



First Floor Lobby



Second Floor Walkway



Second Floor Lobby Area

WOODBIDGE HS (New Performing Arts Complex)



View from Second Floor Seating

View from Second Floor Seating



WOODBIDGE HS (New Performing Arts Complex)



First and Second Floor Seating

First Floor Seating



WOODBIDGE HS (New Performing Arts Complex)



Dressing Room

Black Box Theater



Projects Under Construction

Series 2 Projects



BONITA CANYON ES (New Multipurpose Building)



Stage (foreground)

Stage (left) and Restrooms (right)





Conversion of Multipurpose Room to Design Lab (Building C)

Exterior ADA Improvements to Building C



TURTLE ROCK ES (New Music Classroom Building)



New Music Classroom Building

New Music Classroom Building



TURTLE ROCK ES (New Music Classroom Building)



New Stairs and Ramp to New Music Classroom Building

Bottom of Ramp



Projects In Design

Series 2 Projects
and
Augmented Funds to Accelerate Projects (AFAP)



Projects In Design

Series 2 Projects

- University Park ES
- Northwood ES

DSA APPROVED AWAITING BOND SALE

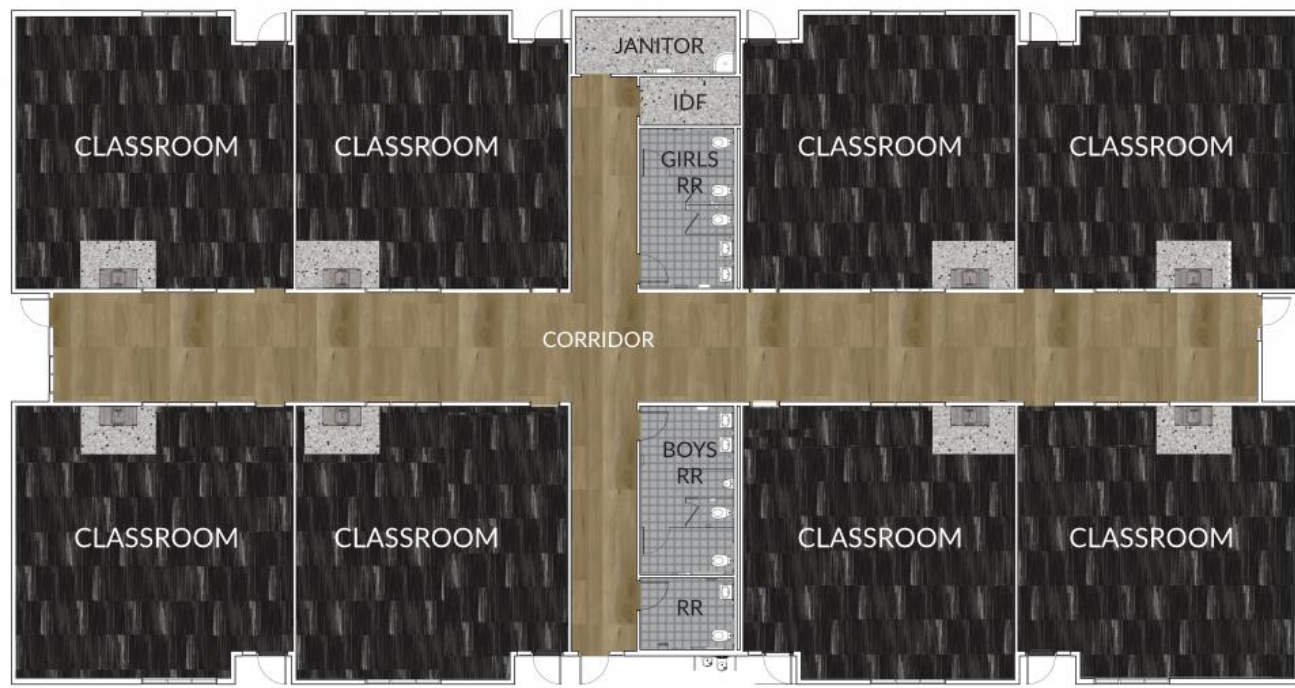
- South Lake MS
- Woodbridge HS



UNIVERSITY PARK ES (New Classroom Building)



Plan view



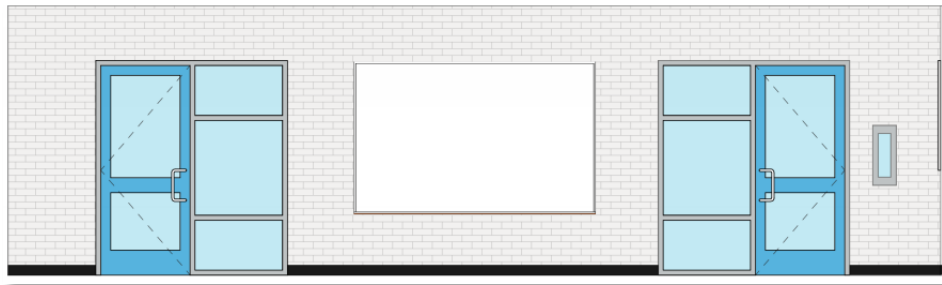
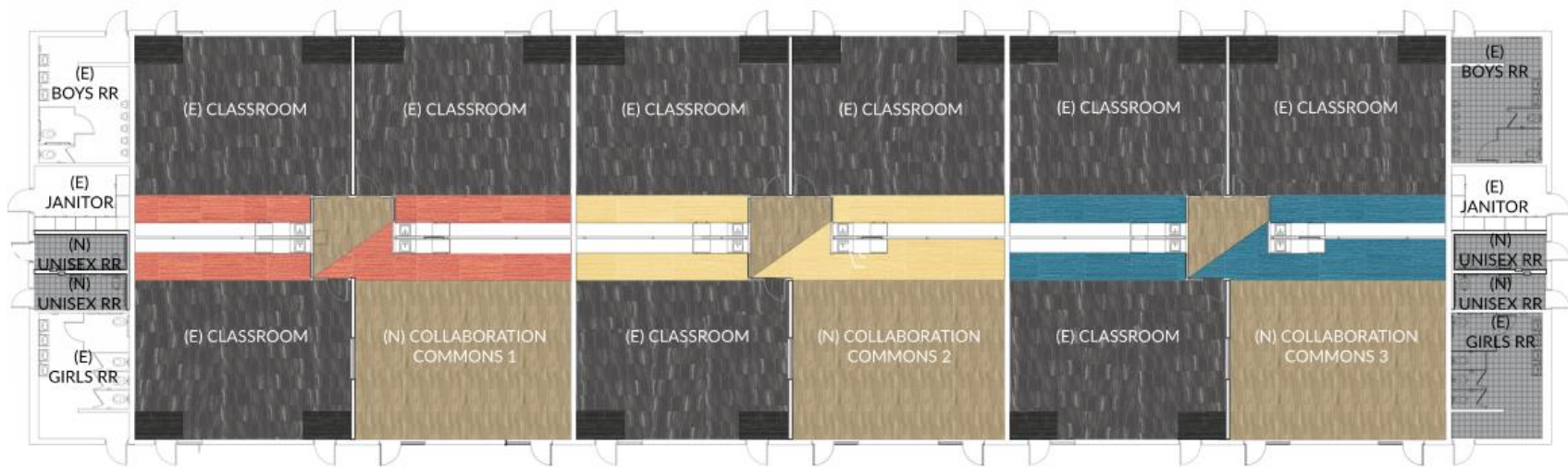
Elevation view



UNIVERSITY PARK ES (Building D Collaboration Spaces)



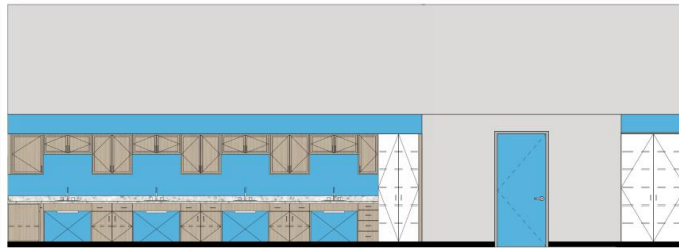
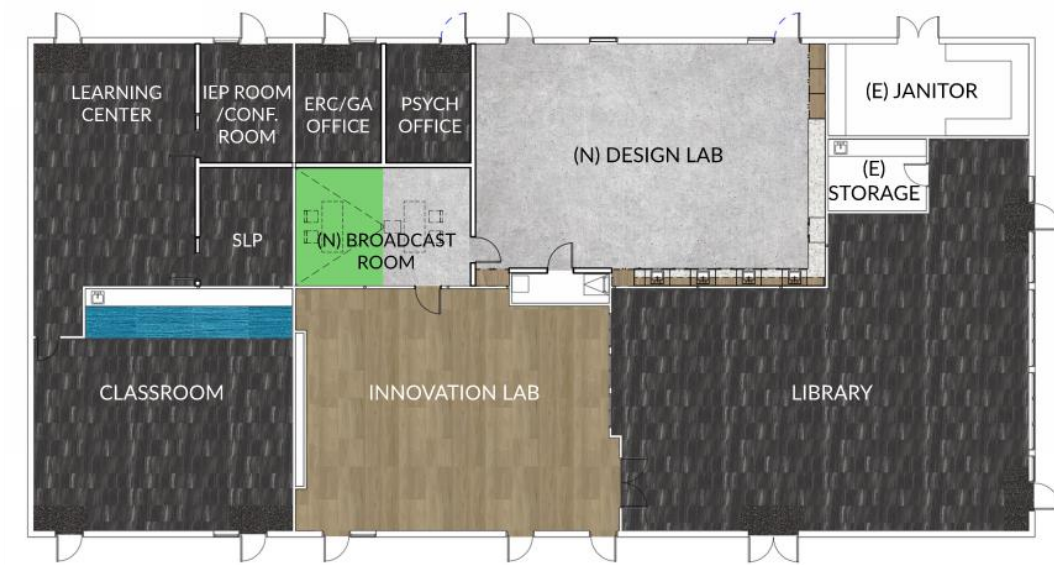
Plan View



Interior Elevations



Plan View

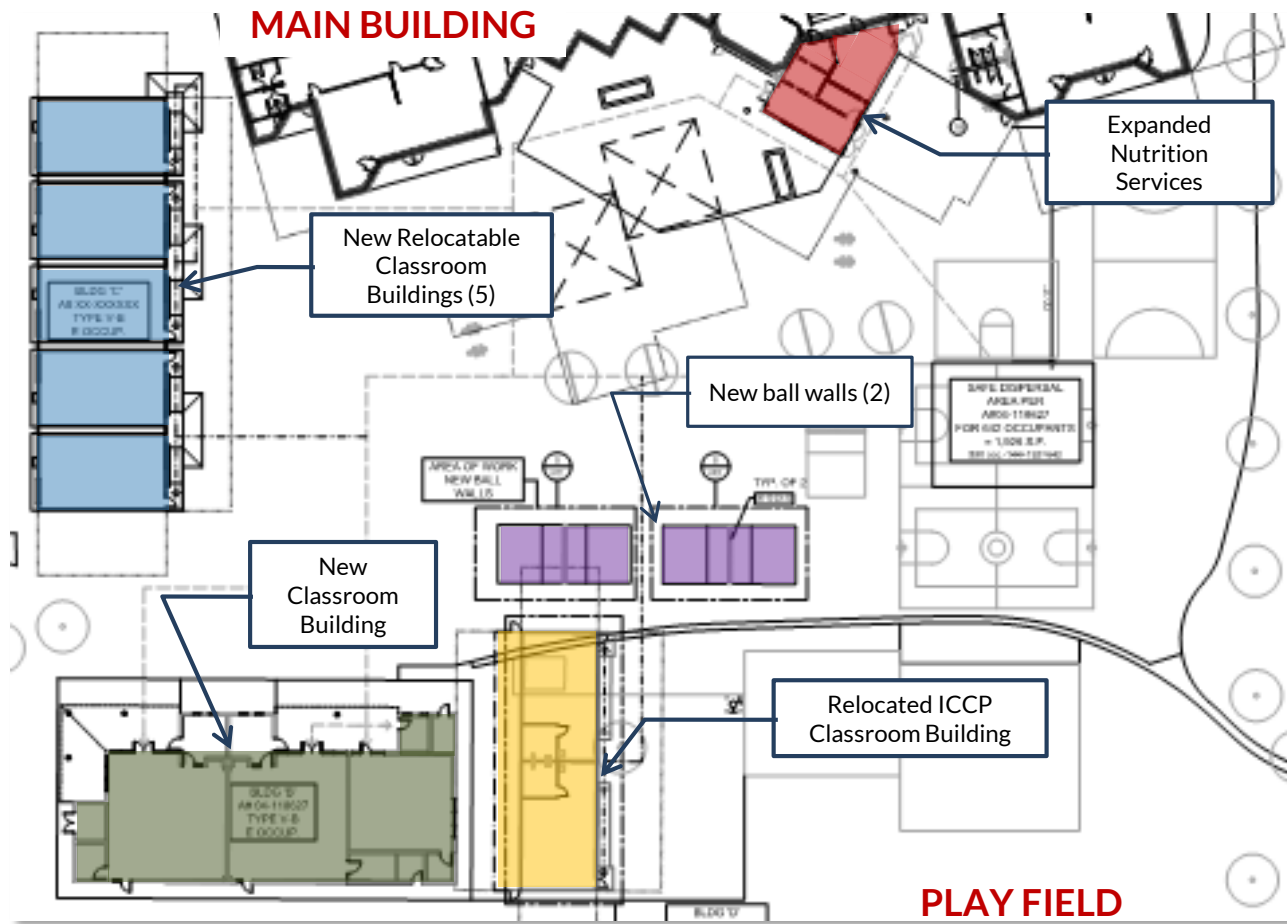


Interior Elevations

NORTHWOOD ES (Campus Improvements)



[Site Overview](#)



NORTHWOOD ES (New Classroom Building)*



Exterior View

Music Classroom Building - Exterior

Music Classroom - Interior



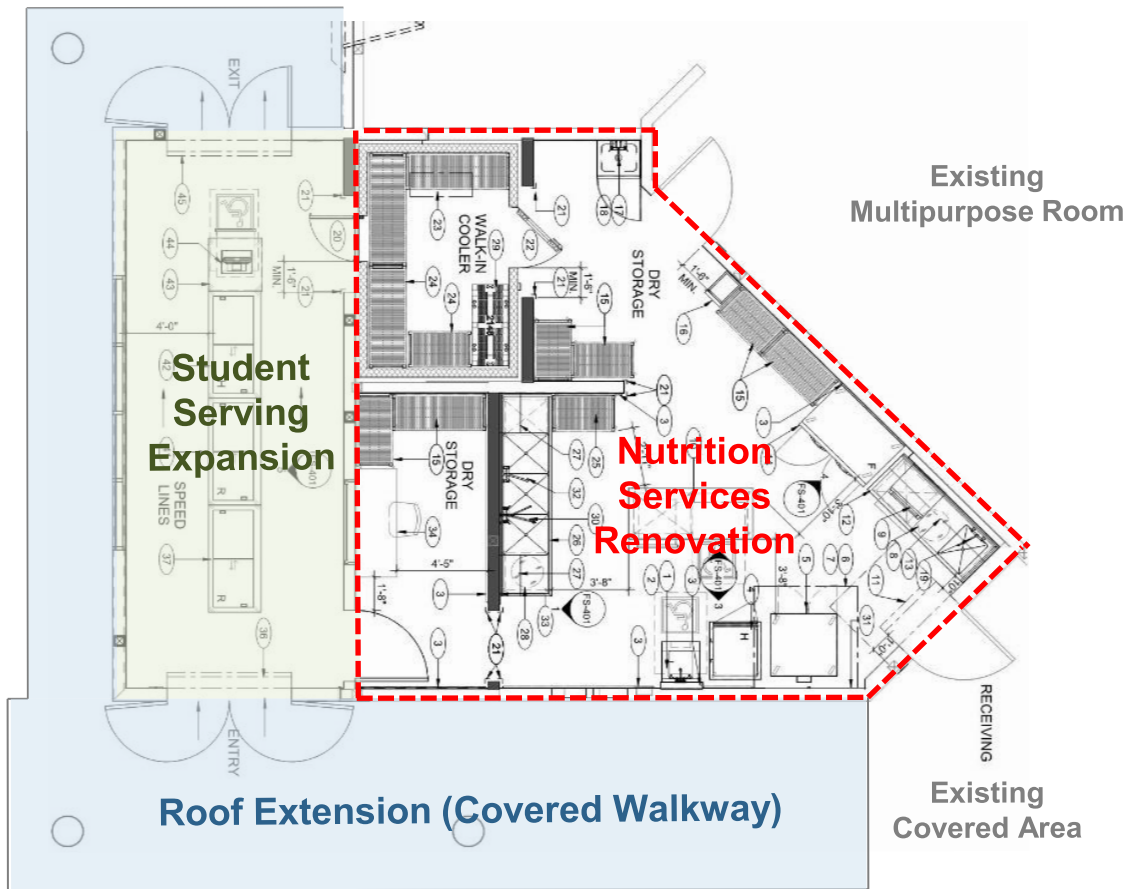
Flexible Choral Environment

- Similar design as Springbrook ES new classroom building

NORTHWOOD ES (Expanded Nutrition Services)



Partial plan view





Projects In Design

Augmented Funds to Accelerate Projects

(AFAP)

- Canyon View ES
- Oak Creek ES
- Deerfield ES
- Plaza Vista School
- Irvine HS





Expanded Music Classroom

New Conference Room in Library



CANYON VIEW ES (Innovation and Design Labs)



Design Lab



Innovation Lab

OAK CREEK ES (New Music Classroom Building)



Music Classroom Building (right)

Music Classroom Building (from parking lot)



OAK CREEK ES (New Music Classroom Building)



Music Classroom Building

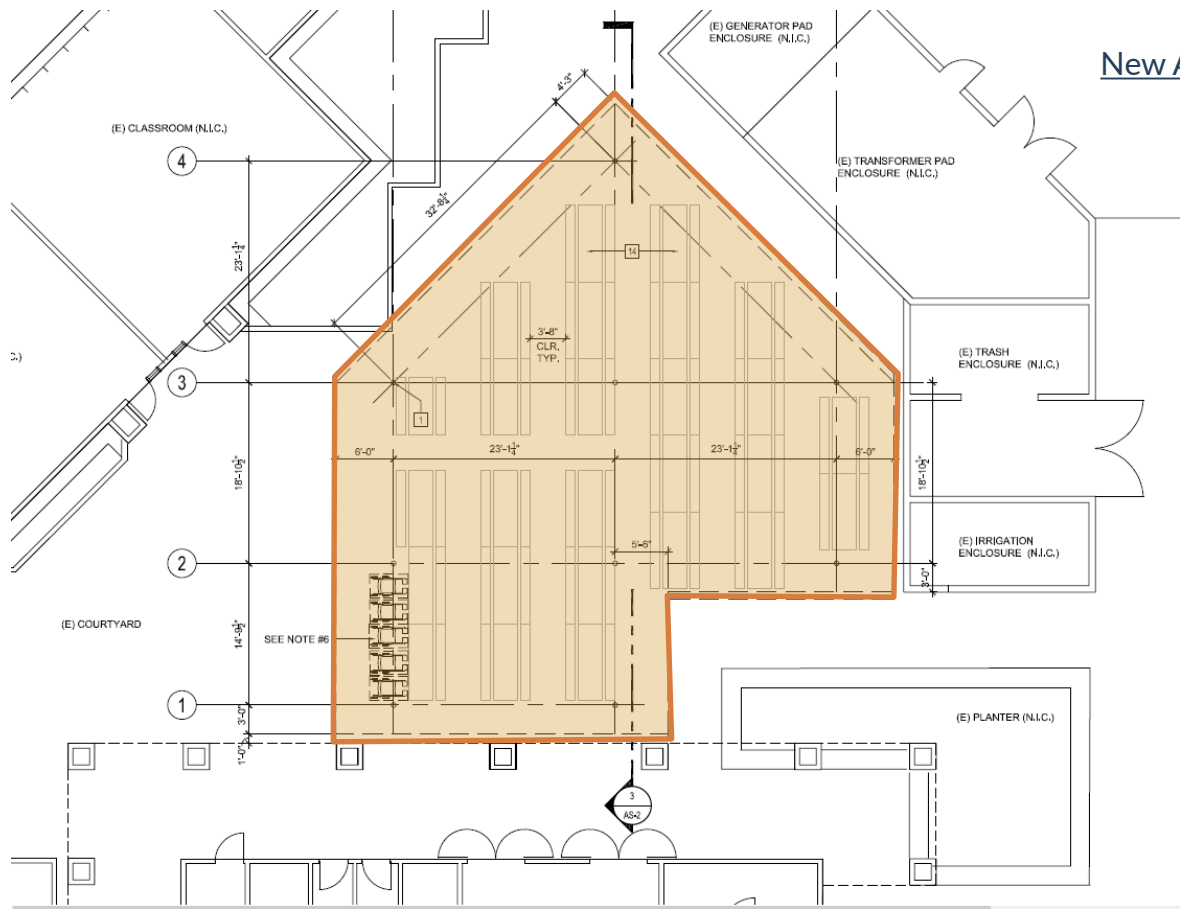
Corridor Between Existing and New



OAK CREEK ES (New Lunch Shelter)



New All-Weather Lunch Shelter



DEERFIELD ES (New Music Classroom Building)



Music Classroom Building

Music Classroom Building

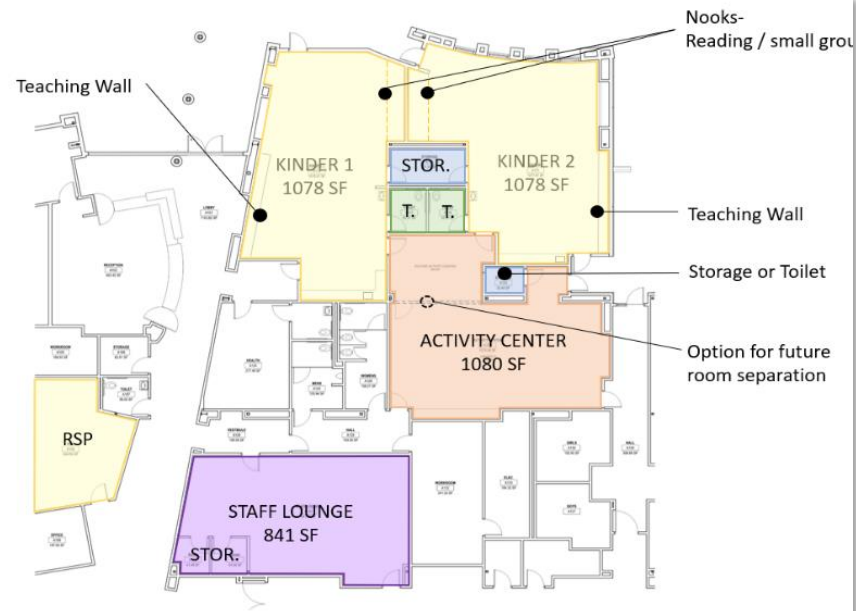


PLAZA VISTA SCHOOL (New Music Classroom/Kinder Renov.)



Music Classroom Building

Kindergarten Renovation

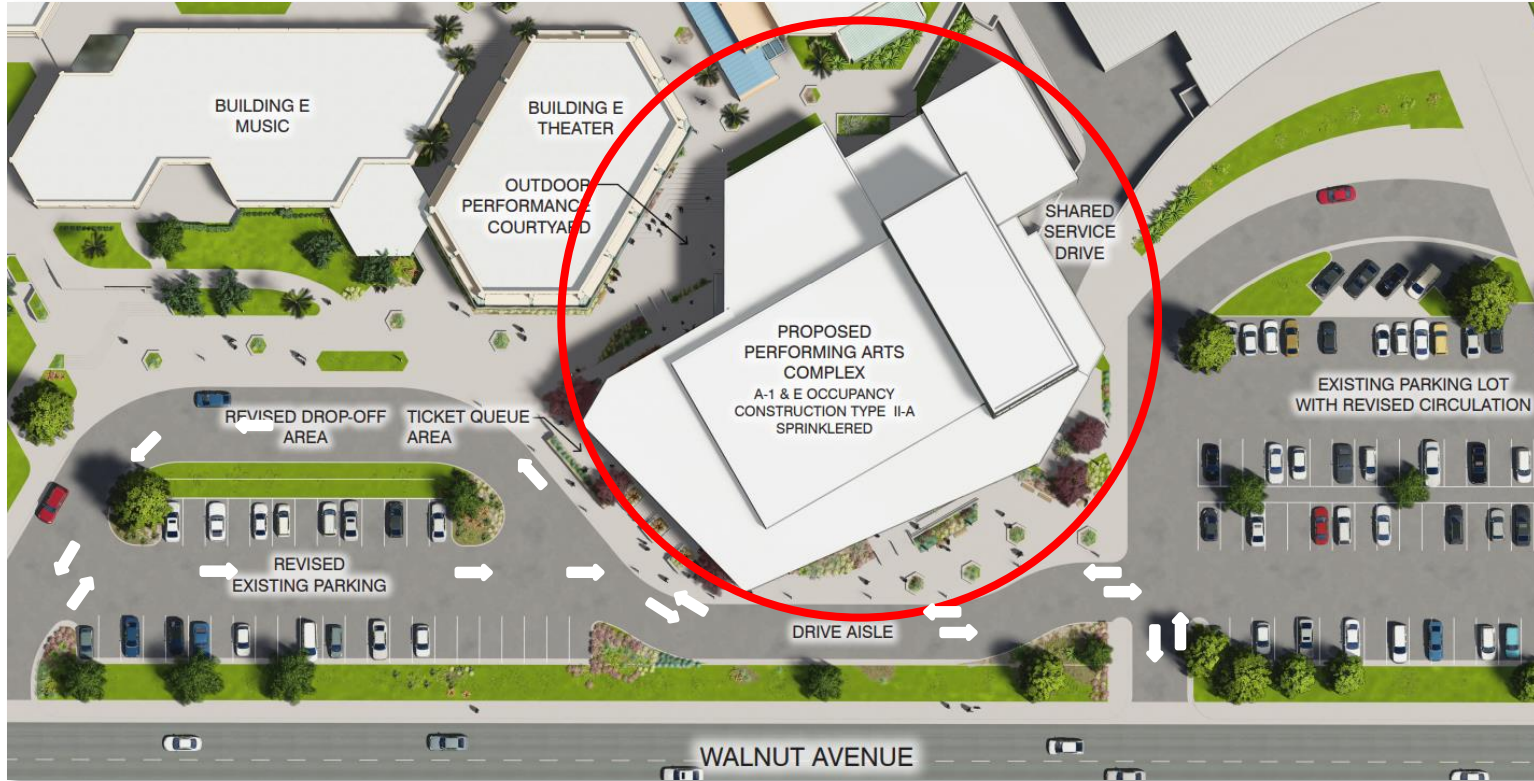


IRVINE HS (New Performing Arts Complex)

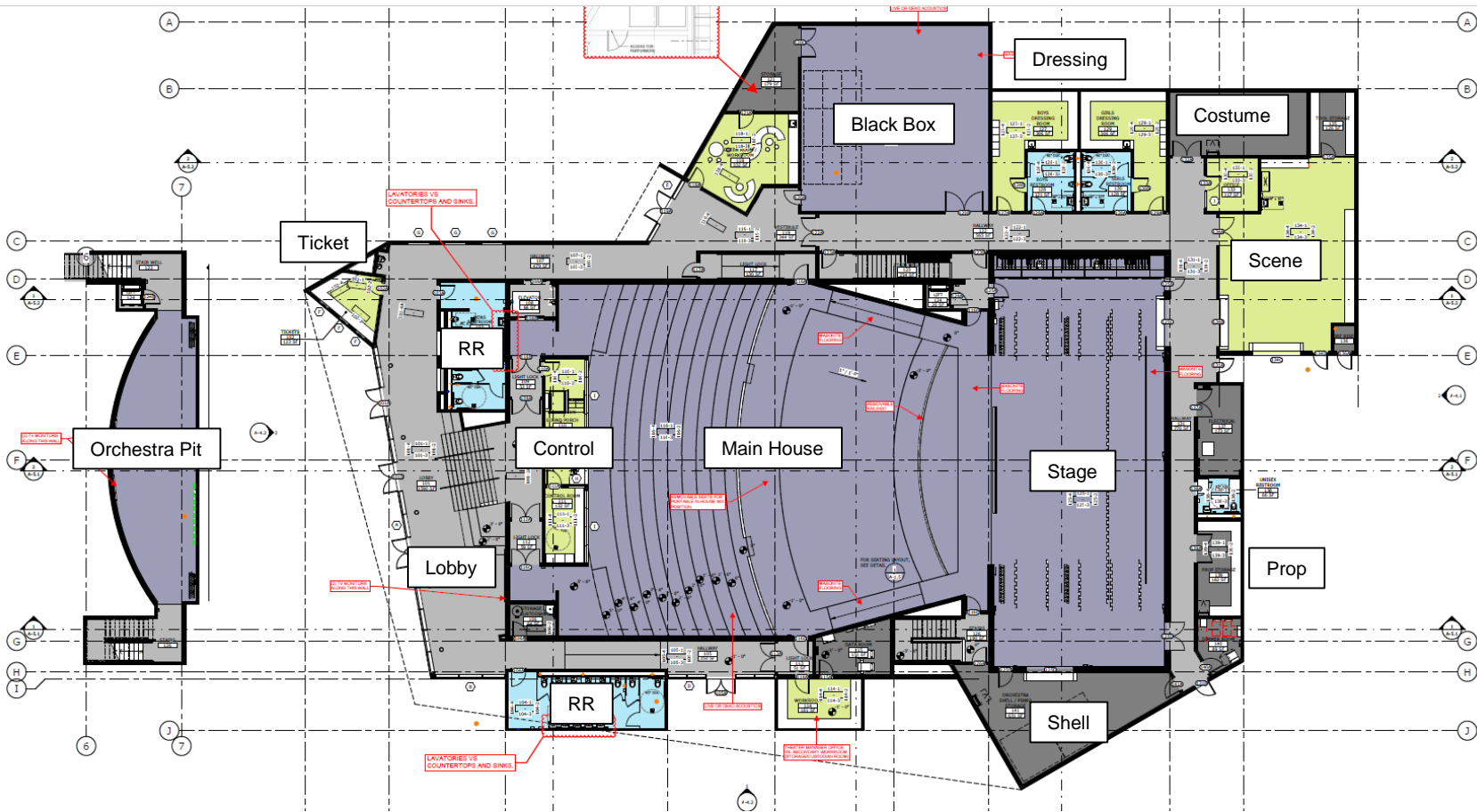


Design Parameters

- Placement of new Performing Arts Complex
- Single story building
- 650 seats
- Black Box theater
- Realignment of drive aisles
- Modification to parking lot



IRVINE HS (New Performing Arts Complex)



IRVINE HS (New Performing Arts Complex)



New Performing Arts Complex (aerial view)

New Performing Arts Complex (street view)



IRVINE HS (New Performing Arts Complex)



New Performing Arts Complex (campus view)

Courtyard



UPCOMING EVENTS

- **Next COC Meeting**
 - Day and Date: Monday, January 25, 2021
 - Time: 6:30 pm to 8:30 pm
 - Location: To be determined





QUESTIONS?