



Irvine Unified School District

Measure E

Citizens Oversight Committee Meeting

January 27, 2020

Board of Education

Paul Bokota

Lauren Brooks

Betty Carroll, President

Ira Glasky

Sharon Wallin



AGENDA

- **Budget**
- **State Funding**
- **Schedule**
- **Series 1 Project Updates**
- **Series 2 Project Updates**
- **Northwood ES Kitchen Tour**



Budget



CURRENT BOND FUNDS

<u>BOND FUNDS COMMITTED (Series 1 and 2)</u>	<u>\$136,000,000</u>
--	----------------------

- Series 1 Bond 2016A (received 10/26/2016) \$ 95,000,000
- Series 2 Bond 2018B (received 09/13/2018) \$ 41,000,000



AFAP FUNDS

AUGEMENTED FUNDS to ACCELERATE PROJECTS (AFAP)

- The District has identified \$30 million in available funds in Fund 35 – County School Facilities Fund.
- Board of Education authorized utilizing funds to accelerate Measure E schools that were not completed in Series 1 or Series 2.
- This includes four schools originally in Series 4 and 5 that will receive improvements five to nine years sooner than previously planned.
- By summer 2022, all 28 SFIM schools will have received improvements.



CURRENT BOND AND DISTRICT FUNDS

FUNDS COMMITTED (Series 1 and 2)	\$212,757,866
• Series 1 Funds	\$154,873,361
Bond Series 2016A (Series 1)	\$ 95,000,000
Bond Series 2018B (Series 2)	\$ 13,115,495
District Funds (Funds 35, 40, 86-1, and LAN project)	\$ 42,143,875
State Grant (CTEFP)*	\$ 439,400
Rebate (IRWD)*	\$ 174,591
Fund 40 (Woodbridge HS Field Improvements)*	\$ 1,000,000
State Grant (CTEFP)*	\$ 3,000,000
• Series 2 Funds	\$ 27,884,505
Bond Series 2018B (Series 2)*	\$ 27,884,505
• AFAP Funds*	\$ 30,000,000

*Funds adjusted or added since June 5, 2018



FUND SUMMARY / FORECASTED BUDGET (Series 1)

Adjustment (10/26/2016)		Adjustment (06/05/2018)		Current (01/27/2020)	
Bond Series 1	\$ 95,000,000	Bond Series 1	\$ 95,000,000	Bond Series 1	\$ 95,000,000
IUSD Funds	\$ 29,600,000	IUSD Funds	\$ 29,600,000	IUSD Funds	\$ 29,600,000
IUSD Funds 1st Adj.	\$ 6,800,000	IUSD Funds 1st Adj.	\$ 6,800,000	IUSD Funds 1st Adj.	\$ 6,800,000
FUNDS	\$ 131,400,000	IUSD Funds 2nd Adj.	\$ 5,100,000	IUSD Funds 2nd Adj.	\$ 5,100,000
		IUSD IT Infrastructure	\$ 643,875	IUSD IT Infrastructure	\$ 643,875
		CTE Grant (CHS)	\$ 348,920	CTE Grant (CHS)	\$ 439,400
		Bond Series 2	\$ 13,115,495	Bond Series 2	\$ 13,115,495
		FUNDS Approved	\$ 150,608,290	IRWD Rebate	\$ 174,591
				Fund 40 to WHS Field	\$ 1,000,000
				CTE Grant (WHS)	\$ 3,000,000
				FUNDS Available	\$ 154,873,361
				CURRENT BUDGET	\$ 152,378,724
				SURPLUS FUNDS	\$ 2,494,637 *

* Amount will increase as projects are completed and surplus funds are identified.



CURRENT PROJECT BUDGETS (Series 1)

- **Enclose Classrooms (6 schools)** **\$ 13,530,390**
Bonita Canyon ES, College Park ES, Culverdale ES,
Greentree ES, Santiago Hills ES, Stone Creek ES
- **High School Modernizations (2 schools)** **\$ 12,146,058**
Irvine HS, University HS
- **Expansions (2 schools)** **\$ 11,164,999**
Eastshore ES, Creekside HS
- **Elementary School Modernizations (4 schools)** **\$ 46,360,048**
Brywood ES, Meadow Park ES, Springbrook ES, Westpark ES
- **High School Field Improvements (2 schools)** **\$ 6,667,008**
Northwood HS, Woodbridge HS



CURRENT PROJECT BUDGETS (Series 1)

-continued-

• Middle School Science Classrooms (5 schools) Lakeside MS, Rancho San Joaquin MS, Sierra Vista MS, South Lake MS, Venado MS	\$ 22,601,618
• New Theater (1 school) Woodbridge HS	\$ 27,910,257
• Music Classroom Buildings (3 schools) Brywood ES, Meadow Park ES, Springbrook ES	\$ 9,757,653
• Interim Campuses (2 schools) El Camino, Westwood Basics	\$ 1,740,693
• Program Costs	\$ 500,000

TOTAL \$152,378,724



CONSTRUCTION CHANGE ORDERS (Series 1)

Final Change Order Percentages

School		Original Contract	Final Contract	Change Orders	Change Order %	School		Original Contract	Final Contract	Change Orders	Change Order %
1	Bonita Canyon ES	\$ 687,833	\$ 661,920	\$ (25,913)	-3.77%	12	Lakeside MS	\$ 2,279,702	\$ 2,214,866	\$ (64,836)	-2.84%
2	College Park ES	\$ 1,947,472	\$ 1,997,707	\$ 50,235	2.58%	13	Rancho San Joaquin MS	\$ 4,201,968	\$ 4,102,266	\$ (99,702)	-2.37%
3	Culverdale ES	\$ 1,004,045	\$ 1,020,602	\$ 16,557	1.65%	14	Westpark ES	\$ 7,535,025	\$ 7,612,438	\$ 77,413	1.03%
4	Greentree ES	\$ 1,263,711	\$ 1,240,335	\$ (23,376)	-1.85%	15	Brywood ES - Mod	\$ 8,022,046	\$ 8,631,320	\$ 609,274	7.59%
5	Santiago Hills ES	\$ 1,053,407	\$ 1,050,915	\$ (2,492)	-0.24%	16	Brywood ES - Music	\$ 2,842,214	\$ 2,773,342	\$ (68,872)	-2.42%
6	Stone Creek ES	\$ 3,155,560	\$ 3,113,229	\$ (42,331)	-1.34%	17	Meadow Park ES - Mod	\$ 9,640,387	\$ 9,846,879	\$ 206,492	2.14%
7	Northwood HS	\$ 2,946,419	\$ 3,055,203	\$ 108,784	3.69%	18	Meadow Park ES - Music	\$ 2,889,679	\$ 2,841,629	\$ (48,050)	-1.66%
8	Irvine HS	\$ 4,704,255	\$ 4,843,227	\$ 138,972	2.95%	19	Eastshore ES	\$ 4,522,529	\$ 4,568,321	\$ 45,792	1.01%
9	University HS	\$ 3,533,004	\$ 3,519,126	\$ (13,878)	-0.39%	20	Venado MS	\$ 3,798,615	\$ 3,817,505	\$ 18,890	0.50%
10	Sierra Vista MS	\$ 3,643,560	\$ 3,526,896	\$ (116,664)	-3.20%	21	Creekside HS	\$ 3,681,144	\$ 3,587,830	\$ (93,314)	-2.53%
11	South Lake MS	\$ 2,753,376	\$ 2,688,937	\$ (64,439)	-2.34%	TOTALS		\$ 76,105,951	\$ 76,714,493	\$ 608,542	0.80%



INITIAL & FINAL BUDGETS COMPARISON (Series 1)

Completed Projects		[A]	[B]	[C]	[D]
		Initial Budget	Post-Bid Budget	Final Budget	Post-Bid & Final Budget Variance [B-C]
1	Bonita Canyon ES - Enclosed Classrooms	\$ 400,384 ¹	\$ 912,184 ²	\$ 868,451 ⁴	\$ 43,733
2	Culverdale ES - Enclosed Classrooms	\$ 2,595,000 ¹	\$ 1,633,772 ²	\$ 1,601,117 ⁴	\$ 32,655
3	Greentree ES - Enclosed Classrooms	\$ 3,306,432 ¹	\$ 2,042,302 ²	\$ 1,913,892 ⁴	\$ 128,410
4	Northwood HS - Field Improvements	\$ 3,121,000 ¹	\$ 3,815,212 ²	\$ 3,692,908 ⁵	\$ 122,304
5	Santiago Hills ES - Enclosed Classrooms	\$ 1,523,080 ¹	\$ 1,498,668 ²	\$ 1,427,186 ⁴	\$ 71,482
6	Stone Creek ES - Enclosed Classrooms/Expansion	\$ 2,945,000 ¹	\$ 4,423,481 ³	\$ 4,295,488 ⁵	\$ 127,993
TOTALS		\$ 13,890,896	\$ 14,325,619	\$ 13,799,042	\$ 526,577

COC Report Dates

1: 1/9/2017 | 2: 7/24/2017 | 3: 10/28/2019 | 4: 4/24/2018 | 5: 10/28/2019

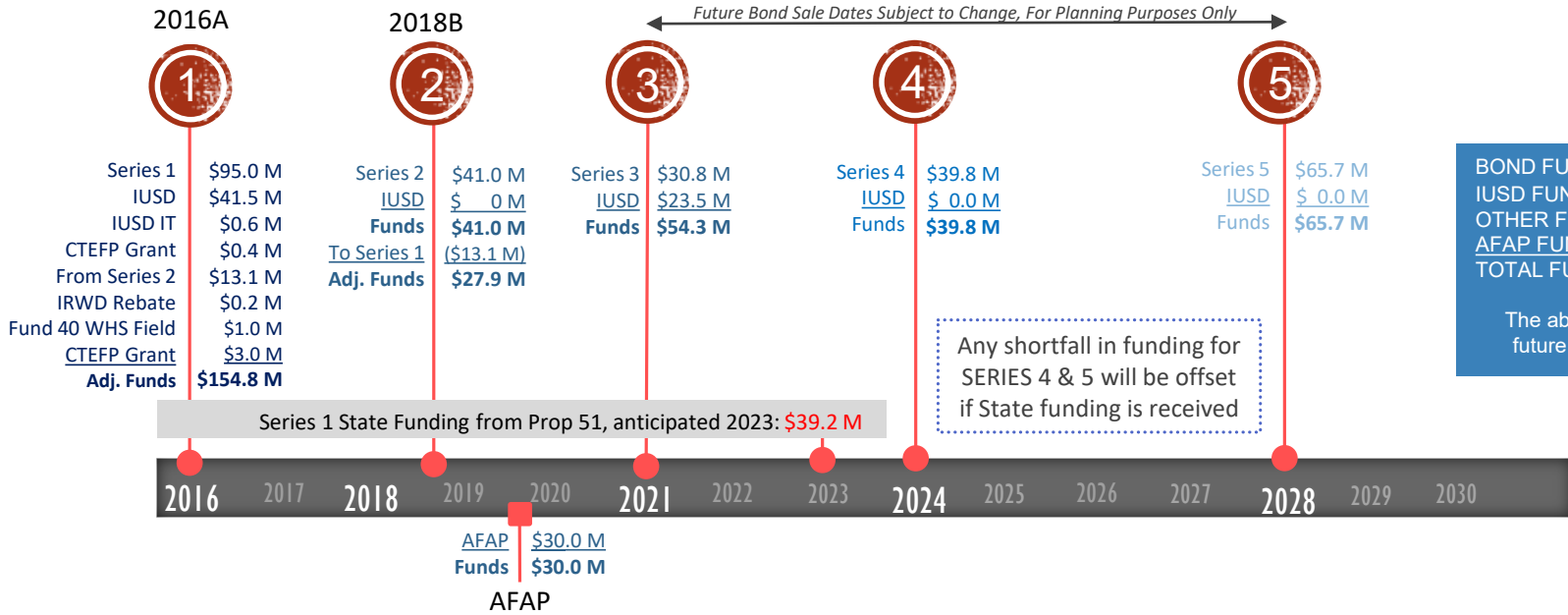


FUND SUMMARY / FORECASTED BUDGET (Series 2)

Initial Budget (01/09/2019)		Current Initial Budget (07/22/2019)	
Bond Series 2	\$ 41,000,000	Bond Series 2	\$ 41,000,000
Funds Transferred to Series 1	\$ (13,115,495)	Funds Transferred to Series 1	\$ (13,115,495)
IUSD Funds	\$ -	IUSD Funds	\$ -
FUNDS	\$ 27,884,505	FUNDS	\$ 27,884,505
CURRENT BUDGET	\$ 25,600,730	CURRENT BUDGET	\$ 29,203,295
<i>SURPLUS FUNDS</i>	<i>\$ 2,283,775</i>	<i>OVER FUNDS Available</i>	<i>\$ (1,318,790)</i>



FUNDING TIMELINE



BOND FUNDS:	\$ 272.3 M
IUSD FUNDS:	\$ 65.0 M
OTHER FUNDS:	\$ 6.2 M
AFAP FUNDS:	\$ 30.0 M
TOTAL FUNDS:	\$ 373.5 M

The above figures exclude future State Grant funds.



State Funding



STATE FUNDING – MEASURE E PROJECTS

STATE FUNDED PROJECTS (Prop. 51)	
Site Name	Amount Received
Creekside High School (CTEFP: Construction Technology)	\$439,400
Woodbridge High School (CTEFP: Performing Arts Center)	\$3,000,000
Total State Funded Applications	\$3,439,400

OPSC WORKLOAD LIST (Prop. 51)	
Site Name	Estimated Funding
Santiago Hills ES (MOD)	\$335,448
College Park ES (MOD)	\$470,630
Culverdale ES (MOD)	\$597,498
Stone Creek ES (MOD)	\$1,411,210
Stone Creek ES (NC)	\$681,602
Irvine HS (MOD)	\$3,874,257
University HS (MOD)	\$654,092
Creekside HS (NC)	\$1,579,717
Sierra Vista MS (NC)	\$1,572,100
South Lake MS (NC)	\$870,227
Eastshore ES (MOD)	\$694,305
Springbrook ES (MOD)	\$3,097,577
Westpark ES (MOD)	\$3,415,758

OPSC WORKLOAD LIST (Prop. 51) - continued	
Site Name	Estimated Funding
Eastshore ES (NC)	\$835,854
Venado MS (NC)	\$2,231,969
Rancho San Joaquin MS (MOD)	\$543,617
Rancho San Joaquin MS (NC)	\$1,108,967
Brywood ES (MOD)	\$2,870,668
Woodbridge HS (NC)	\$3,041,419
Springbrook ES (NC)	\$1,626,156
Meadow Park ES (NC)	\$1,149,109
Brywood ES (NC)	\$1,094,082
Meadow Park ES (MOD)	\$2,526,142
Total State Funding Applications	\$36,282,404

FUTURE SUBMITTALS (Future State Bond)	
Site Name	Estimated Funding
Bonita Canyon ES (Series I: MOD)	\$255,335
Greentree ES (Series I: MOD)	\$277,787
Lakeside MS (Series I: MOD)	\$271,370
Northwood ES (Series II: NC)	\$914,775
Northwood ES (Series II: MOD)	\$1,062,530
South Lake MS (Series II: MOD)	\$3,772,153
South Lake MS (Series II: NC)	\$348,327
Turtle Rock (Series II: NC)	\$914,775
University Park ES (Series II: MOD)	\$503,767
Woodbridge HS (Series II: MOD)	\$6,736,026
Total State Funding Applications	\$15,086,494

STATE FUNDING – PROPOSITION 13

The Public School, K-12, and College Health and Safety Bond Act of 2020

- Election Date: **March 3, 2020**
- **Bond Amount** **\$15.0 Billion**

 - K-12 **\$9.0 Billion**
 - California Community Colleges **\$2.0 Billion**
 - California State University **\$2.0 Billion**
 - University of California **\$2.0 Billion**
- **K-12 (breakdown)** **\$9.0 Billion**

 - New Construction **\$2.8 Billion**
 - Modernization **\$5.2 Billion**
 - Career Technical Education **\$500.0 Million**
 - Charter Schools **\$500.0 Million**

STATE FUNDING – ASSEMBLY BILL 48

- **Program Provisions**
 - **Grant Amounts**
 - **Health and Safety Projects**
 - **Lead in Water**
 - **Disaster Assistance**
 - **Financial Hardship**
 - **Preschools, Kitchens, Health Facilities**
 - **Small School Assistance**
 - **Developer Fees**
 - **Bonding Capacity**
- **Accountability and Transparency**
 - **Public hearing, audit and posting information**

Schedule



CURRENT SCHEDULE

2020

2021

2022

Woodbridge HS – Performing Arts Center

Construction

Summer 2020

SERIES 1

Springbrook ES – Modernization / Music Classroom

Construction

Summer 2020

Woodbridge HS – Field Improvement

Construction

Spring 2020

Bonita Canyon ES, Northwood ES, and Turtle Rock ES

DSA

Bid

Construction

Summer 2021

SERIES 2

University Park ES

Design / DSA

Bid

Construction

Spring 2022

South Lake ES and Woodbridge HS

DSA

Winter 2020

Canyon View ES, Deerfield ES, Oak Creek ES, and Plaza Vista School

Design / DSA

Bid

Construction

AFAP

Summer 2022



OVERVIEW (Series 1)

- **COMPLETED:** Nineteen schools
 - Bonita Canyon ES, Brywood ES, College Park ES, ES, Eastshore ES, Greentree ES, Santiago Hills ES, Meadow Park ES, Stone Creek ES, Westpark ES, Lakeside MS, Rancho San Joaquin MS, Sierra Vista MS, South Lake MS, Venado MS, Creekside HS, Irvine HS, University HS, Northwood HS

SCHEDULED TO COMPLETE SUMMER 2020: One school

- Woodbridge HS (Performing Arts Center and Field Improvements)

SCHEDULED TO COMPLETE AUGUST 2020: One school

- Springbrook ES (Modernization and New Music Classroom)



Series 1 Project Updates: Under Construction

- Woodbridge HS
- Springbrook ES



WOODBIDGE HS Performing Arts Center



Building view from school

Auditorium seating



WOODBIDGE HS Performing Arts Center



Exterior view from Alton Parkway

Interior view at back of stage (Fly Loft)



WOODBIDGE HS Field Improvements



Overview of track and field

Track and runout area



SPRINGBROOK ES Modernization



Classroom improvements (typical)



Collaboration space

SPRINGBROOK ES Modernization



Exterior view of expansion

Interior view of expansion



SPRINGBROOK ES Music Classroom Building



Music classroom building

Music classrooms



Series 2 Project Updates: In Design

- Bonita Canyon ES
- Turtle Rock ES
- Northwood ES
- University HS
- Woodbridge HS
- South Lake MS





BONITA CANYON ES New MPR

Stage and MPR

Storage

Student and Staff
Restrooms





BONITA CANYON ES Reconfigure MPR into Design Lab

New Interior Finishes

AV Upgrades

New Casework





TURTLE ROCK ES New Classroom Building

New Music / Classroom
Addition

Located Near Upper
Grade Students /
Restrooms

Meets Ed Spec Size of
Room and Acoustics

Instrument Storage

Code Upgrades: Fire
Alarm, Accessibility

All Gender Restrooms

Furniture Allocation



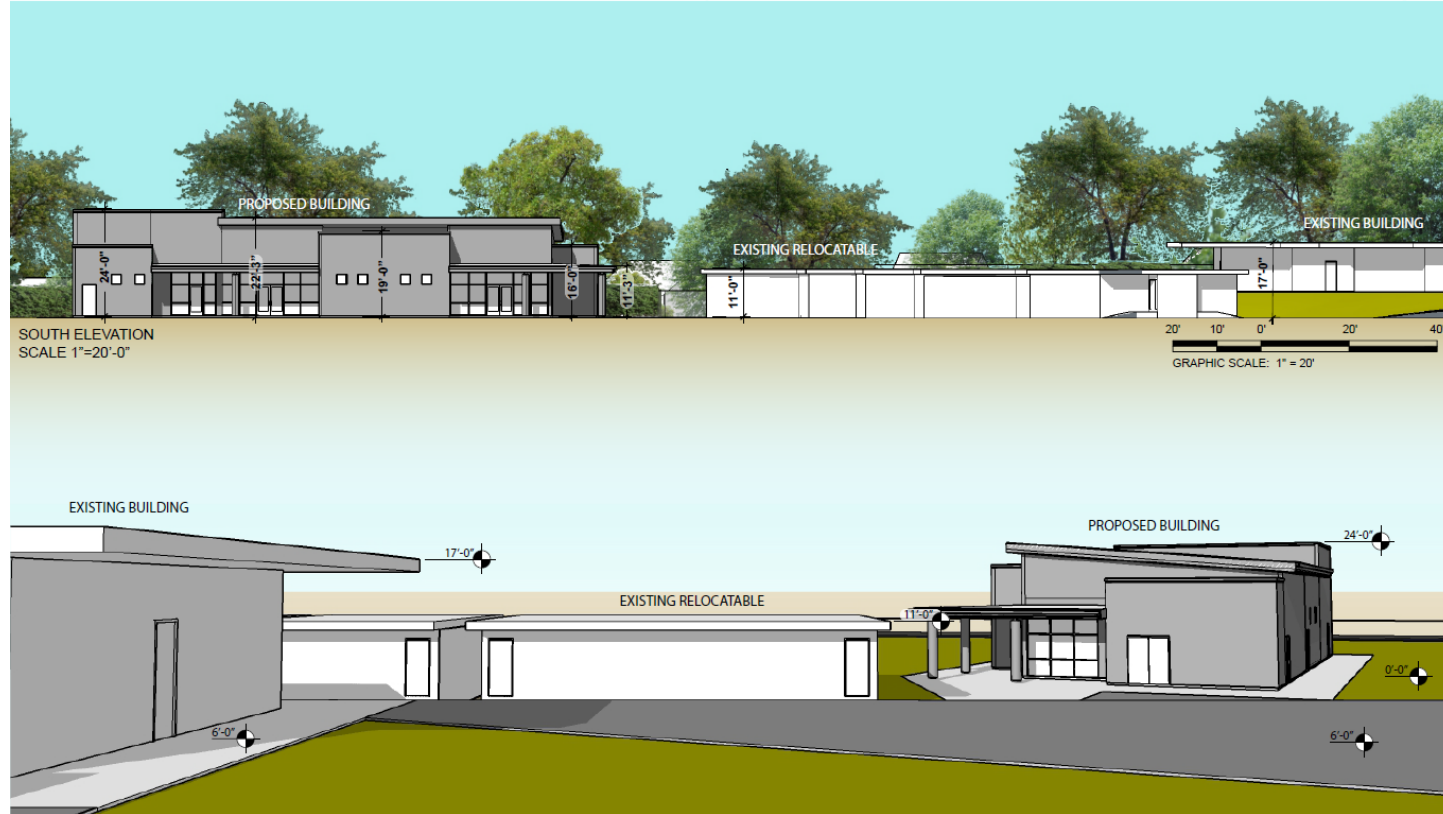


TURTLE ROCK ES New Classroom Building

Landscaping Screening
Backside of Building

Lower Level Placement
Minimizes Height
Difference

Measure E Series 5
Design/Innovation Lab,
Replaces Some Portables





NORTHWOOD ES New Classroom Building

New Music / Classroom
Addition

Located Near Upper
Grade Students

Meets Ed Spec Size of
Room and Acoustics

Instrument Storage and
All Gender Restroom

Code Upgrades: Fire
Alarm, Accessibility

Furniture Allocation





NORTHWOOD ES New Classroom Building

Replace One Aging
Relos with New Relo

Expand/Reconfigure
Food Services





UNIVERSITY PARK ES New Classroom Building, Replace Some Portables, Reconfigure Design Lab/Student Support

New "Villa" Classroom Building

Add Commons in Existing Classroom Building/Acoustic Walls

Reconfigure Design Lab/Student Support

Remove Some Portables

Furniture Allocation

New Fire Access and Upgraded Parking





WOODBIDGE HS Modernization

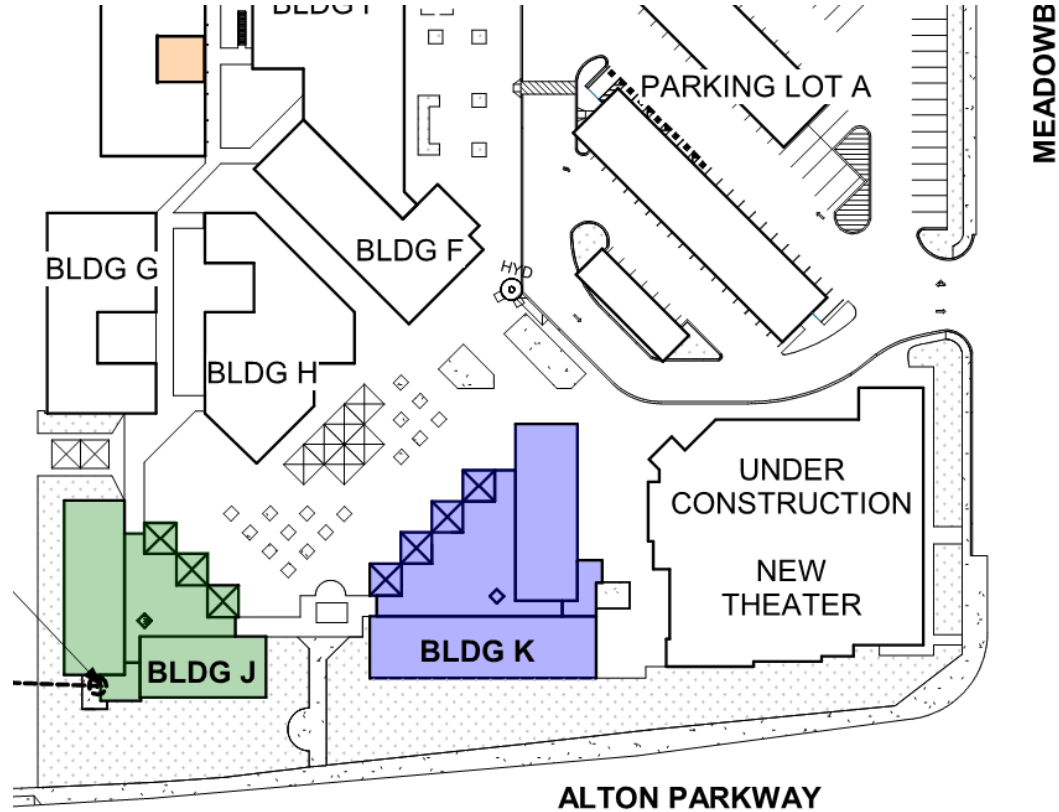
Heating and AC System
Upgrades

New Interior Finishes,
Audio Visual System

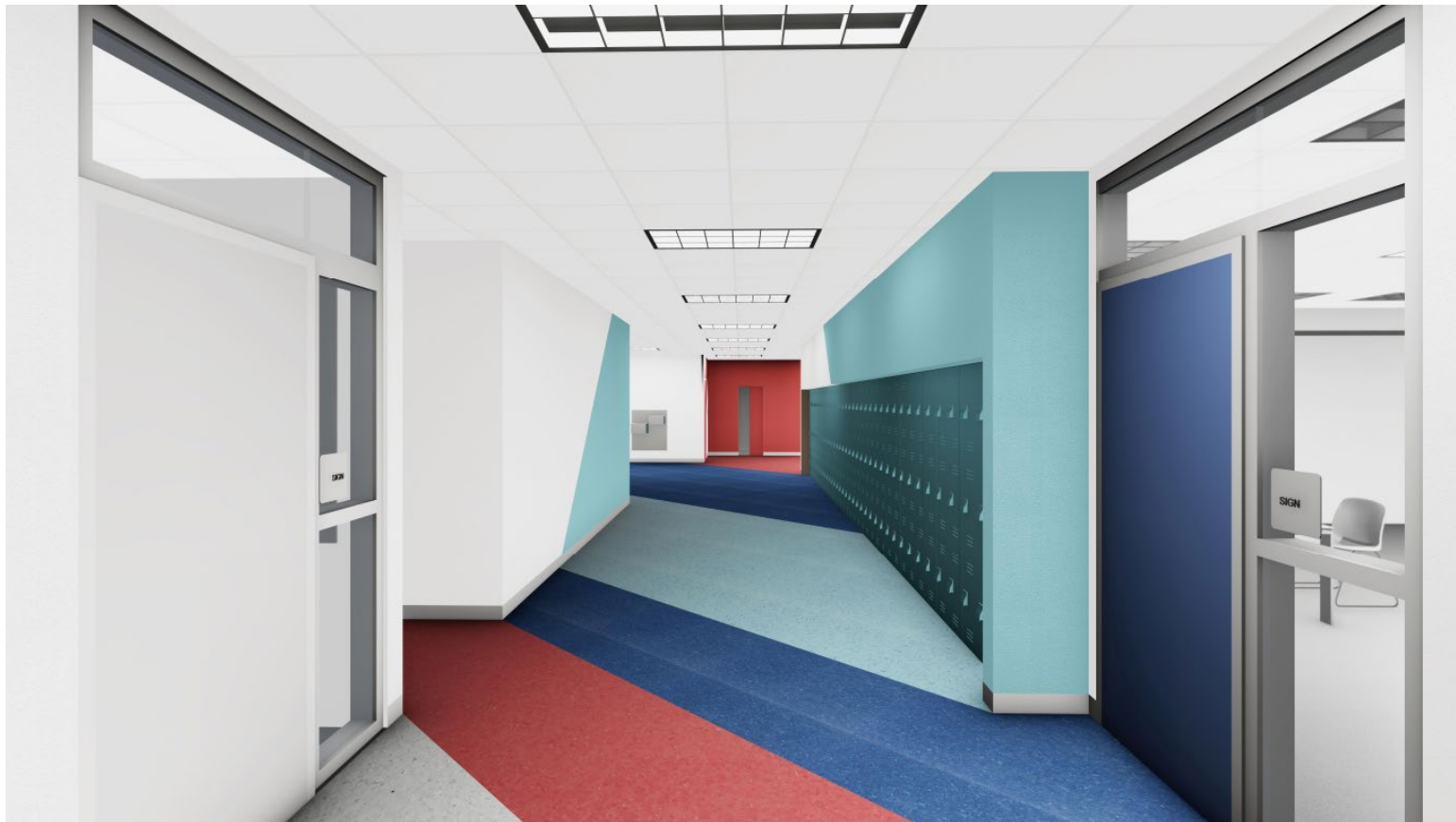
New Lighting and
Controls

Reconfigure Teacher
Walls

Furniture Allocation



WOODBRIIDGE HS Modernization





SOUTH LAKE MS Modernization

Heating and AC System Upgrades

New Interior Finishes, Audio Visual System

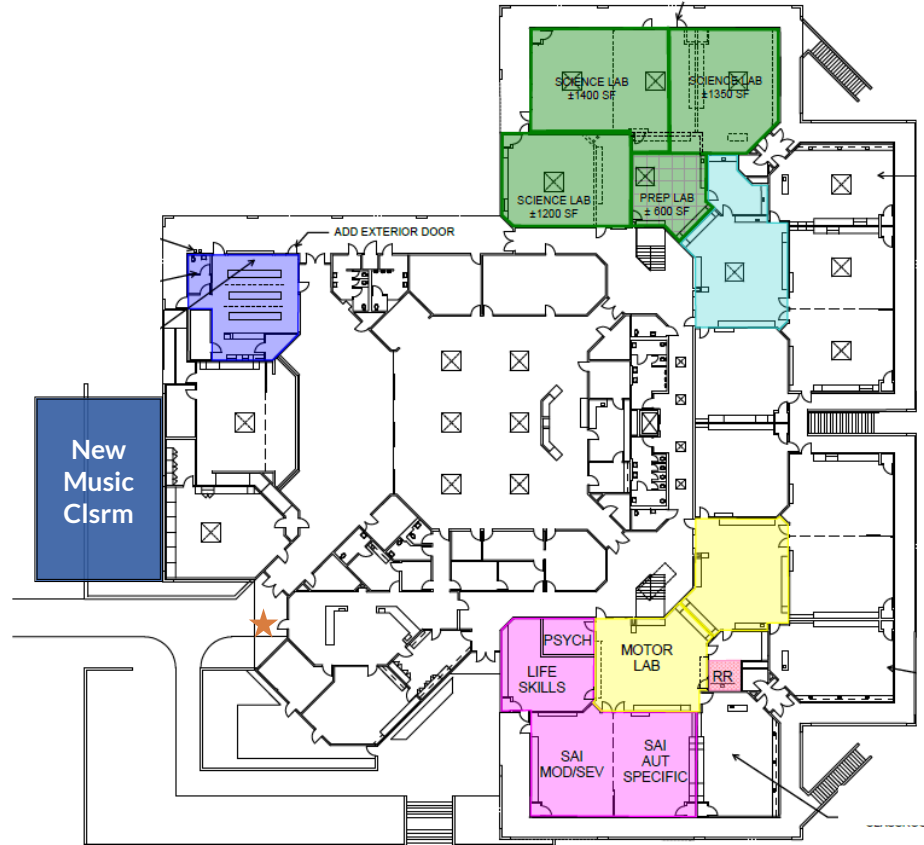
Reconfigure (4) Clrms to (3) Science Labs

Reconfigure/Upgrade Food Service

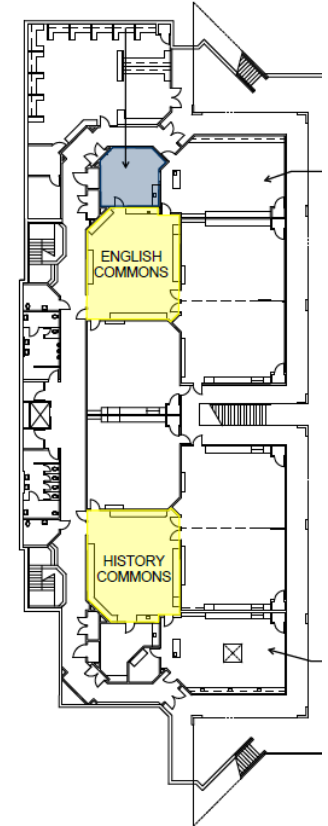
Special Education Life Skills Space

Code Upgrades: Fire Alarm, Accessibility

Furniture Allocation



First Level



Lower Level



SOUTH LAKE MS New Music Building

Music Classroom
Addition

Instrument Storage

Meets Ed Spec Size of
Room and Acoustics

Curb Appeal and
Landscaping

Furniture Allocation



Augmented Funds to Accelerate Projects (AFAP)



AUGMENTED FUNDS TO ACCELERATE PROJECTS

- The four remaining “untouched” schools include
 - Deerfield ES (Current Series 5)
 - Canyon View ES (Current Series 4)
 - Oak Creek ES (Current Series 4)
 - Plaza Vista School (Current Series 4)
- In addition, design and obtain agency approval of one school
 - Irvine HS (Current Series 3)



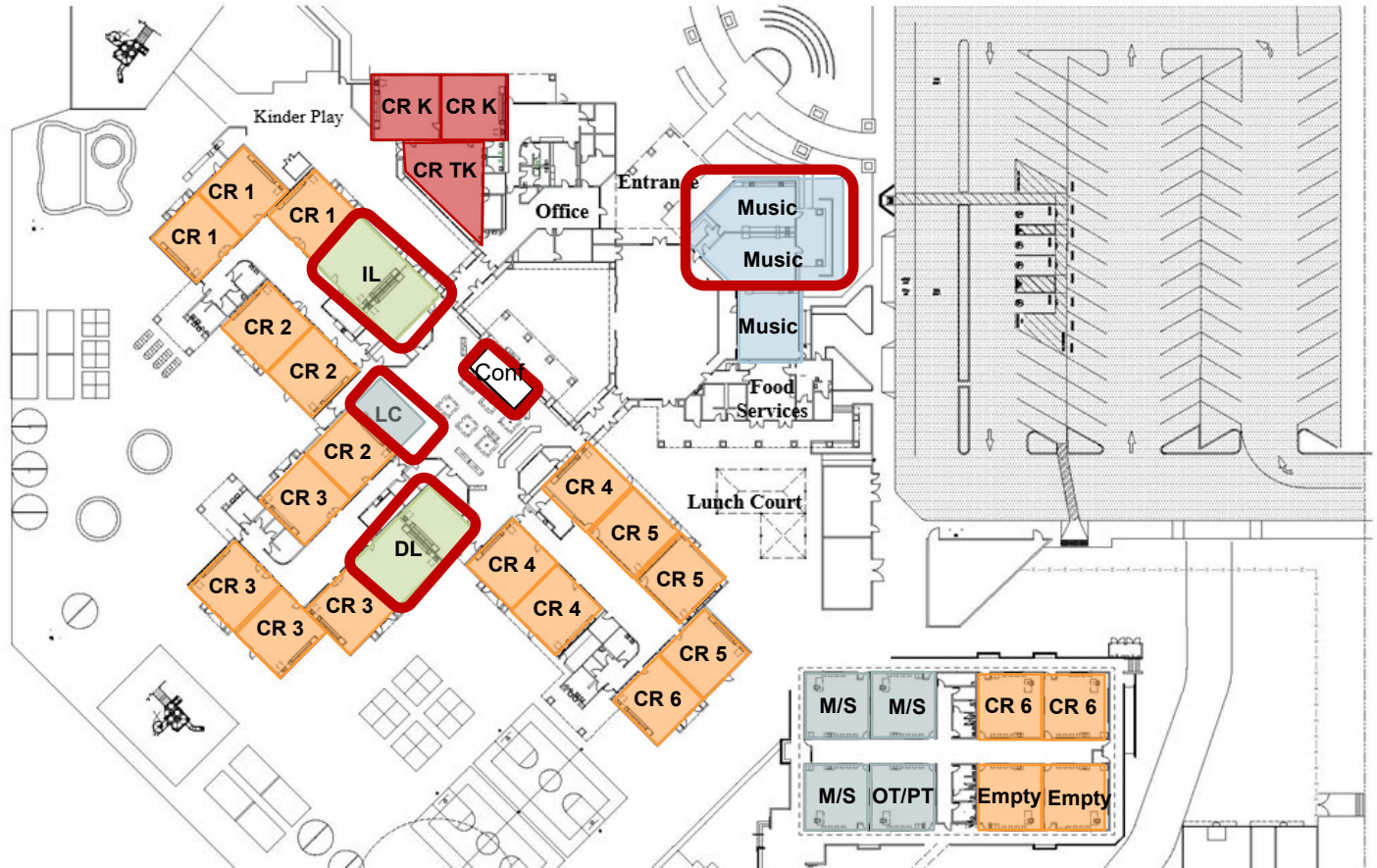
CANYON VIEW ELEMENTARY SCHOOL

AFAP PROJECT



SCOPE

- Expand existing music
- Move DL/IL adjacent to Library
- Build new Learning Center and Conference Room in Library



PLAZA VISTA SCHOOL

AFAP PROJECT



SCOPE

- Construct (2) Music Classrooms, Instrument Storage
- Reconfigure existing Lounge to Kinder AC/CR
- Add shade in existing Kinder
- Relocate Lounge to Science CR
- Relocate Science CR



DEERFIELD ELEMENTARY SCHOOL

AFAP PROJECT



SCOPE

- Construct (2) Music Classrooms, Instrument Storage
- Expand Food Services to add service lines



OAK CREEK ELEMENTARY SCHOOL

AFAP PROJECT



SCOPE

- Construct (1) Music Classroom, Instrument Storage
- Construct all weather lunch shelter

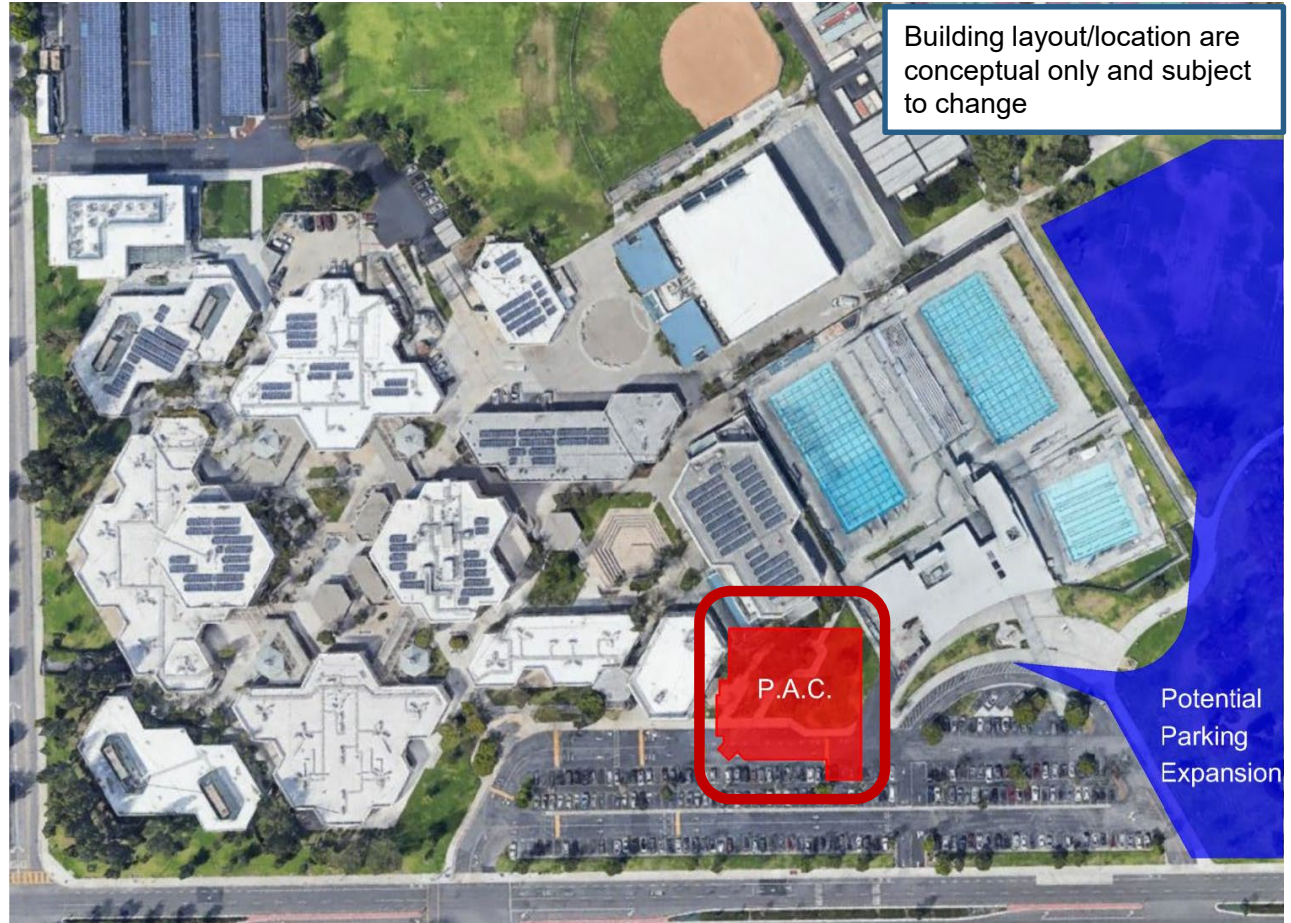


IRVINE HIGH SCHOOL

AFAP PROJECT

SCOPE

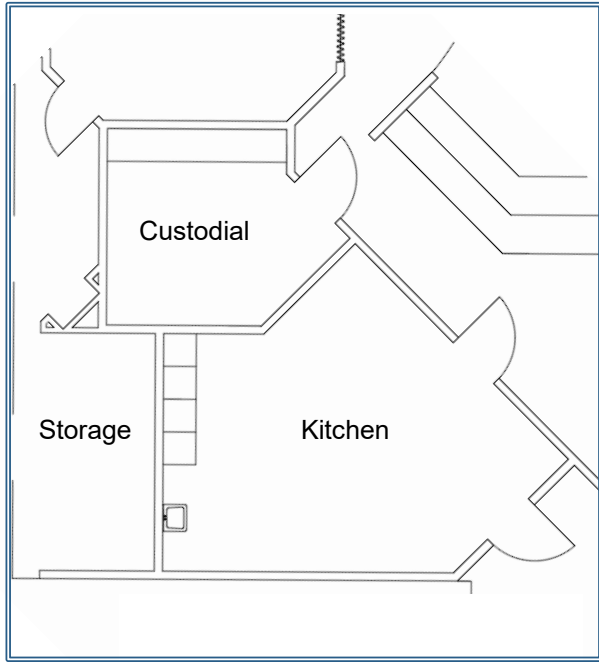
- Construct (1) Performing Arts Center



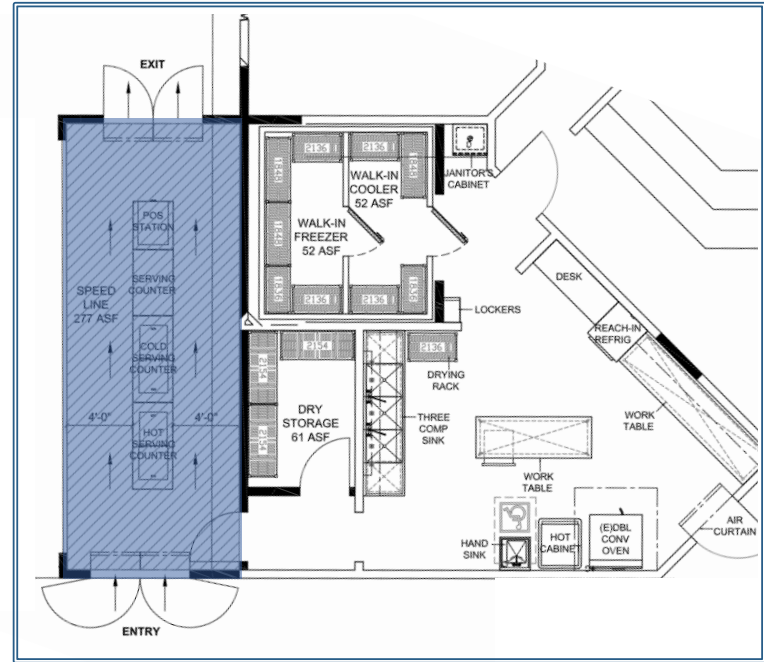
Northwood ES Tour (Kitchen Area)



NORTHWOOD ES Expand and Reconfigure Food Service



EXISTING FLOOR PLAN



PROPOSED EXPANSION/RECONFIG. FLOOR PLAN



QUESTIONS?